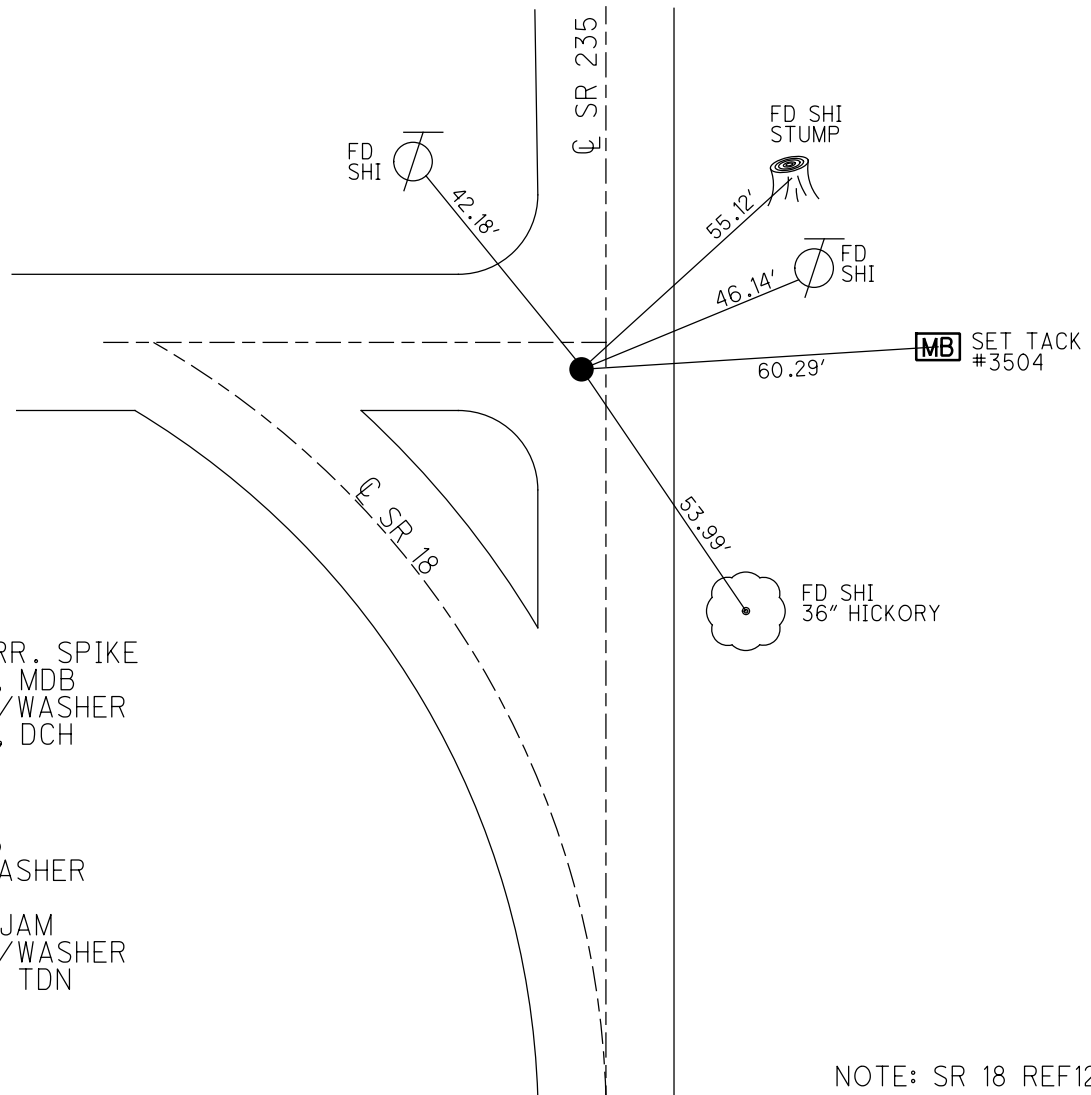
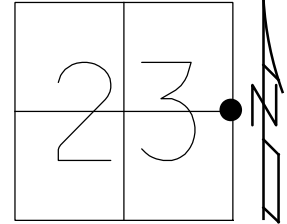


O.D.O.T. DISTRICT 2 SURVEY OFFICE (USE ONLY)

PERSONNEL \_\_\_\_\_ REFERENCE NO. 6 SHEET 3 OF 26  
 NOTES AUBLE DATE 5-23-23 ROUTE SR 235  
 H.C. NIESE WEATHER CALM COUNTY WOOD  
 R.C. AUBLE TEMP. 74°F TOWNSHIP JACKSON  
 DWG BY ASTON PID PAVETRAIN SECTION 23  
 T 3 N R 9 E

TYPE MONUMENT MAG/WASHER  
 ON SURFACE - BELOW ON  
 OFFSET  $\phi$  PAVEMENT 1.4 LT : RT  
7.9' TO LT EDGE PAVEMENT  
 STATION: 132+92.51

HORZ.DATUM: NAD83(2011) GEOID: 18  
 GRID: NORTHING: 562849.825 EASTING: 1615087.890



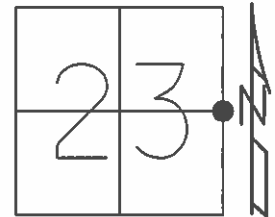
RECORD:  
 SET SM RR. SPIKE  
 6-26-86, MDB  
 SET MAG/WASHER  
 7-26-05, DCH  
 REF6  
 8-27-15  
 REF12  
 09-04-15  
 FD PK/WASHER  
 REF6  
 2/1/23, JAM  
 SET MAG/WASHER  
 8/14/23, TDN

NOTE: SR 18 REF12

O.D.O.T. DISTRICT 2 SURVEY OFFICE (USE ONLY)

PERSONNEL \_\_\_\_\_ REFERENCE NO. 6 SHEET 3 OF 26  
 NOTES RHOADES DATE 8-27-15 ROUTE SR 235  
 H.C. O'DONNELL WEATHER CLOUDY COUNTY WOOD  
 R.C. RHOADES TEMP. 70°F TOWNSHIP JACKSON  
 \_\_\_\_\_ SECTION 23  
 \_\_\_\_\_ T 3 N R 9 E

TYPE MONUMENT PK/WASHER  
 ON SURFACE - ~~BELOW~~ ON \_\_\_\_\_  
 LEFT - ☉ PAV'T - ~~RIGHT~~ 1.4'  
7.9' TO LT EDGE PAVEMENT  
 S.L.M. 132+92.51



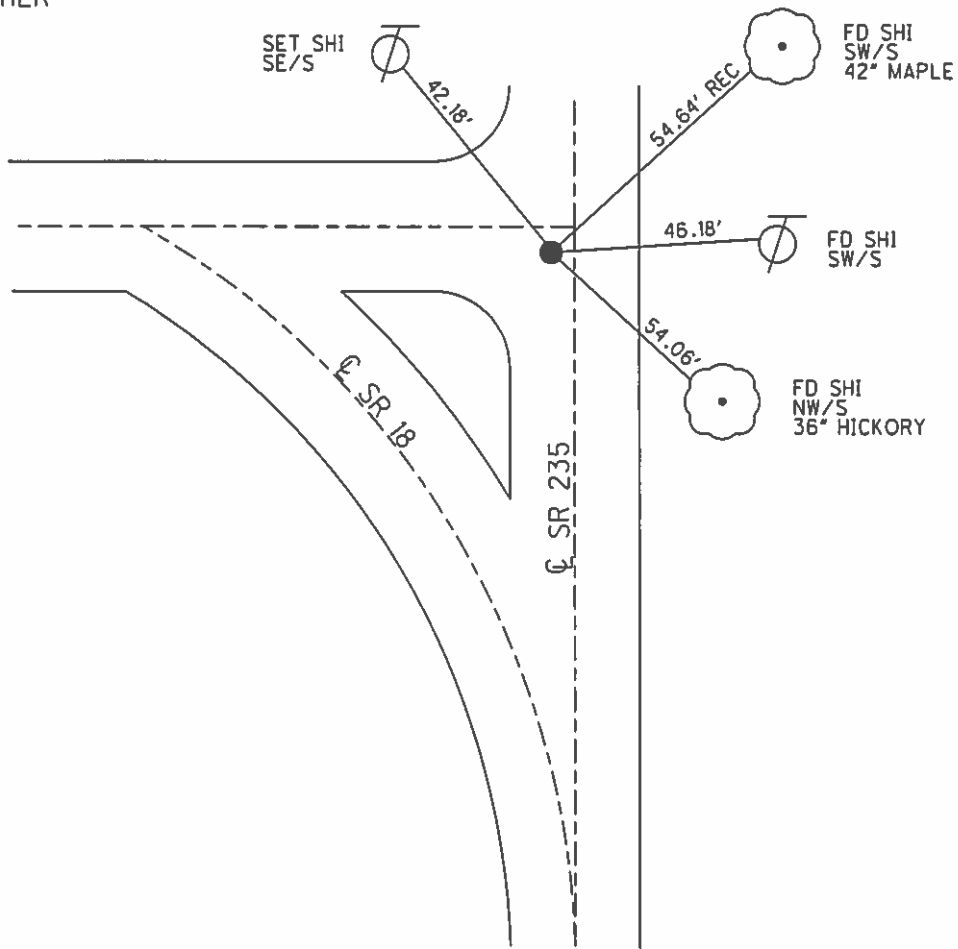
Grid: Northing: 562849.898 Easting: 1615087.839

RECORD:  
 SET SM RR. SPIKE  
 6-26-86, MDB

SET MAG/WASHER  
 7-26-05, DCH

GPS, REF6  
 8-27-15

GPS, REF12  
 09-04-15



O.D.O.T. DISTRICT 2 SURVEY OFFICE

PERSONNEL

REFERENCE NO. 6

SHEET 2 OF 23

NOTES Homan

DATE 9-24-03

ROUTE 235

H.C. Nuhfer

WEATHER Cloudy

COUNTY WOOD

R.C. Ballmer

TEMP. 50°

TOWNSHIP JACKSON

SECTION 23

T 3 N R 9 E

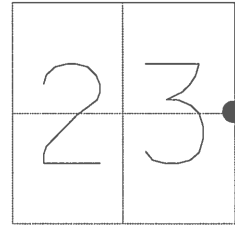
TYPE MONUMENT PK & Washer

ON SURFACE - BELOW on surface

LEFT - ~~CL PAV'T~~ - RIGHT 1.4

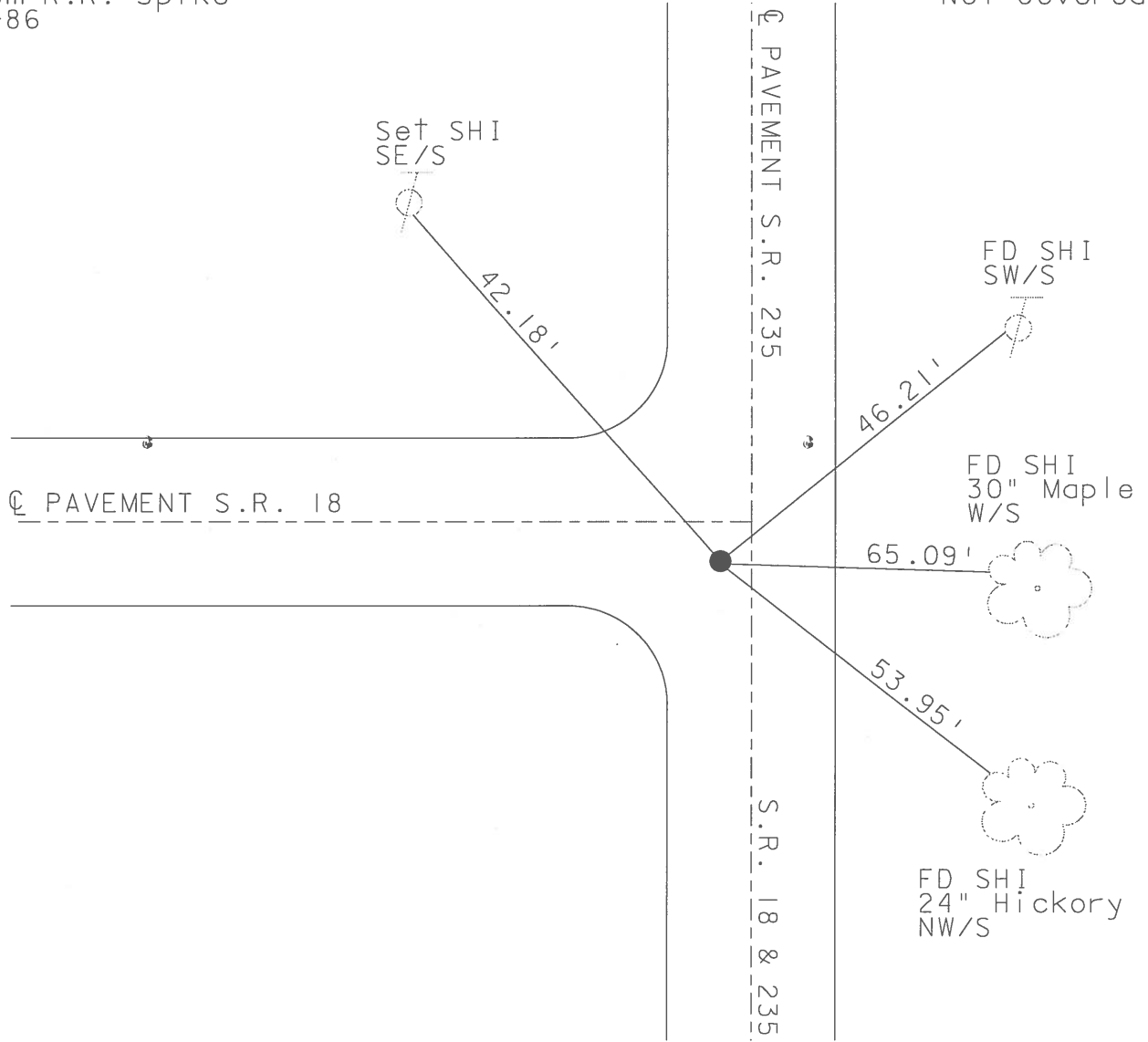
7.9 TO LT EDGE PAVEMENT

S.L.M. 131+87 0.5 S of S.R. 18



Set Sm R.R. Spike  
6-26-86  
MDB

Not Covered



# O.D.O.T. DISTRICT 2 SURVEY OFFICE

PERSONNEL \_\_\_\_\_

REFERENCE NO. 6

SHEET 1 OF 20

NOTES HUSS

H.C. MOSEK

R.C. HUSS

DATE 5-21-96

WEATHER SUNNY

TEMP. +66°F

ROUTE 235

COUNTY WOOD

TOWNSHIP JACKSON

SECTION 23

T3 N R 9 E

TYPE MONUMENT Lg. R.R. SPK

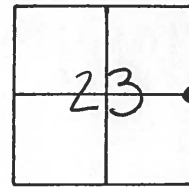
ON SURFACE - BELOW ON SURFACE

LEFT - PAVT. - RIGHT 1.4

7.9 TO LT EDGE PAVEMENT

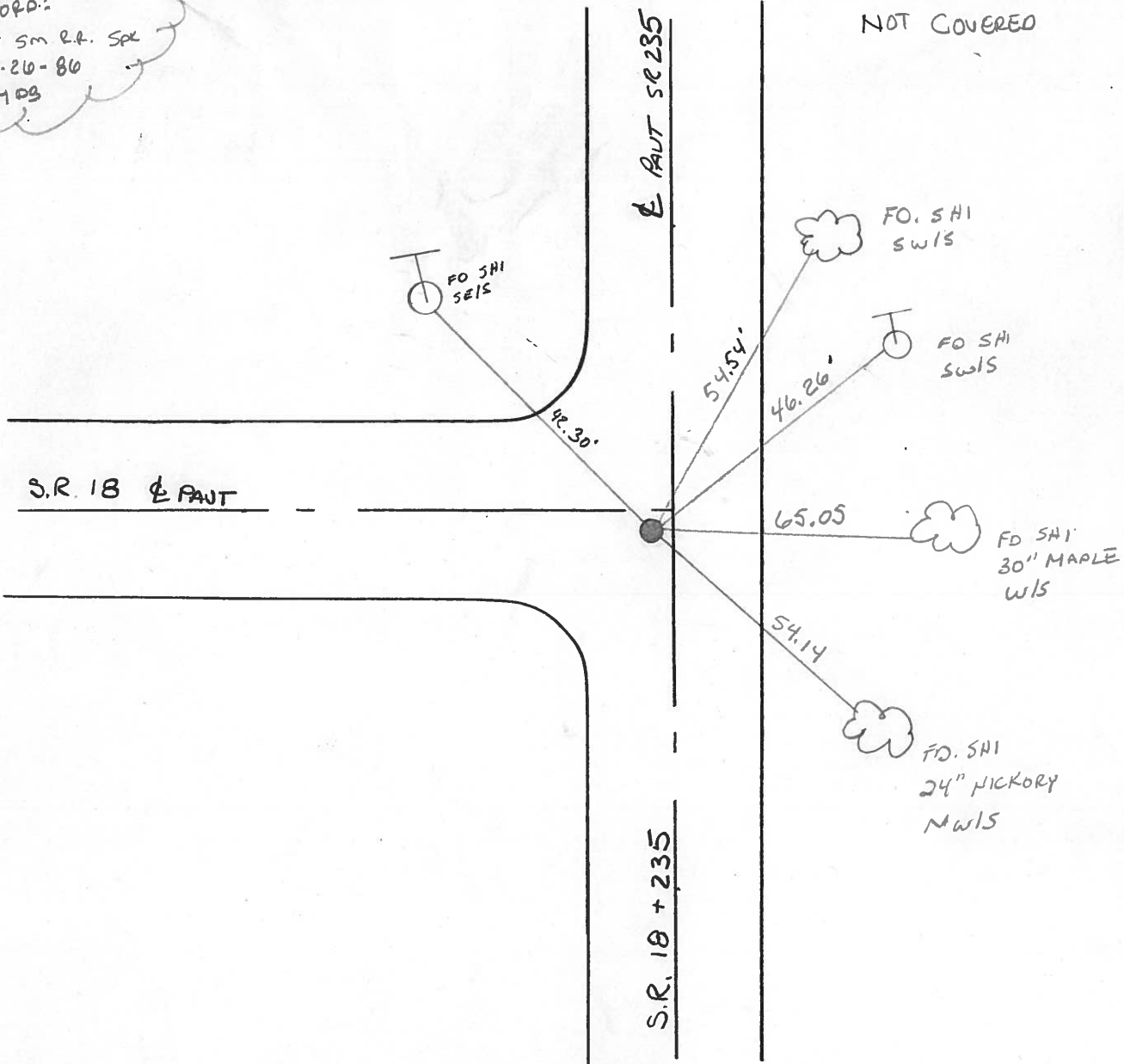
S.L.M. 131 + 87

0.5 S. OF S.R. 18 WEST



Recheck:  
Set sm R.R. Spk  
6-20-86  
MOS

NOT COVERED



Resurfaced 1996

O.D.O.T. DISTRICT 2 SURVEY OFFICE

PERSONNEL

REFERENCE NO. 6

SHEET \_\_\_\_\_ OF \_\_\_\_\_

NOTES BARNHISEL

H.C. Loehrke

R.C. HOFFMAN

DATE 6-3-86

WEATHER SUNNY

TEMP. +50°

ROUTE 235

COUNTY WOOD

TOWNSHIP JACKSON

SECTION 23

T 3 N R 9 E

TYPE MONUMENT Lg RR Spk

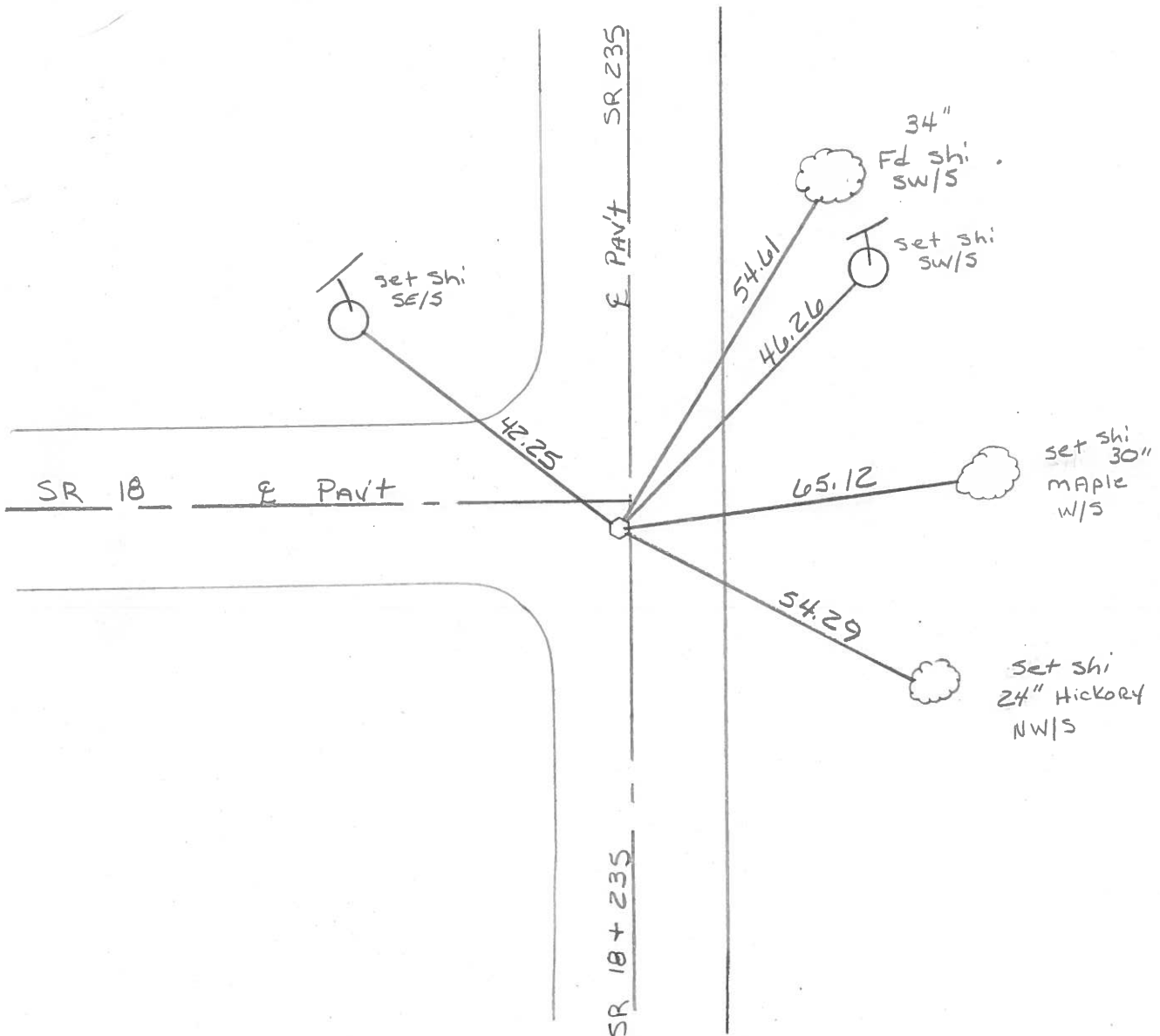
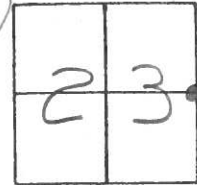
ON SURFACE - BELOW 1 1/2"

LEFT - ☉ PAV'T. - RIGHT .5

- TO - EDGE PAVEMENT

S.L.M. 131 + 87 4.5 S. of SR 18 West

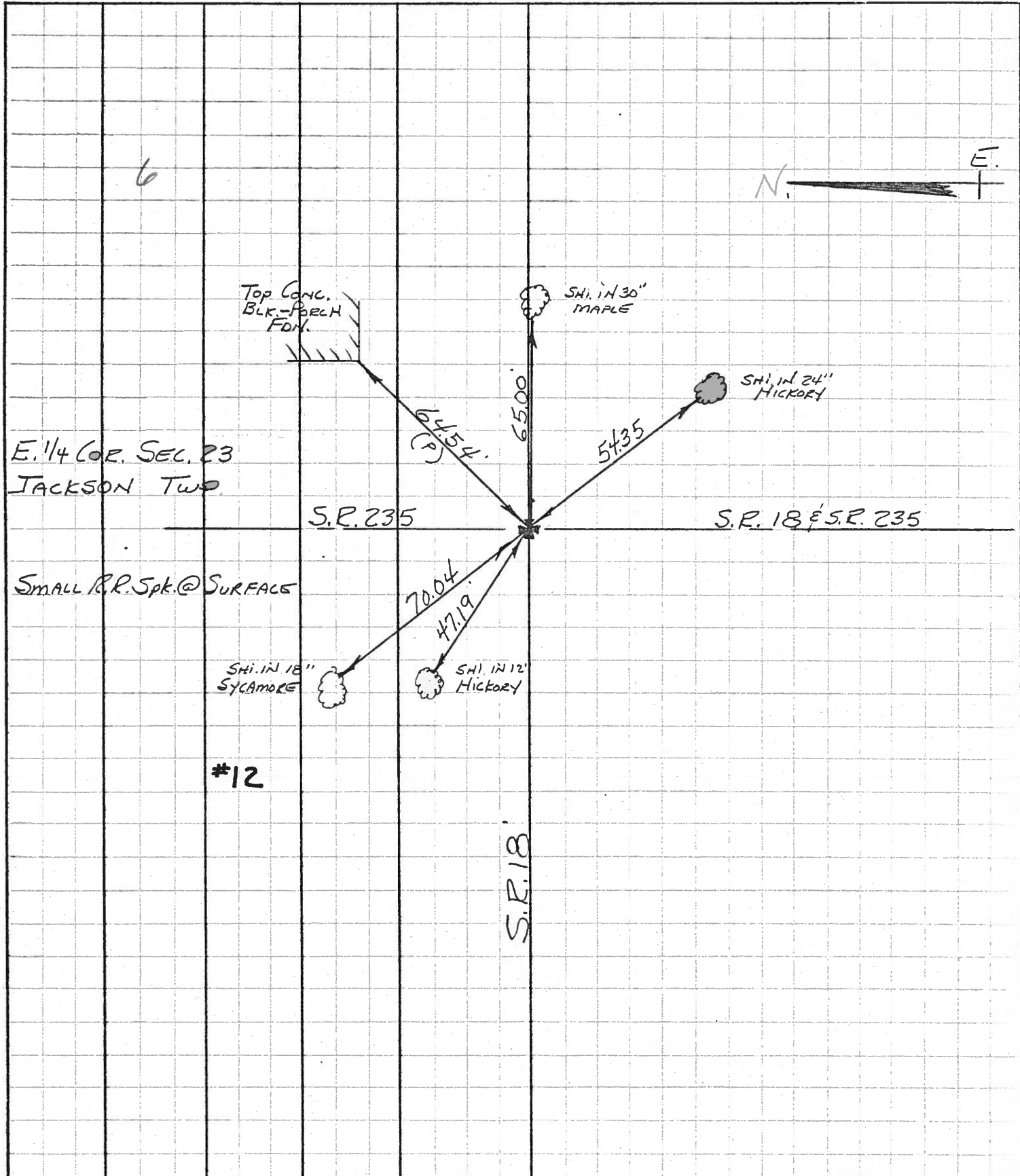
Set Sm RR Spk  
6-26-86  
MOS



PERSONNEL	TITLE	PERSONNEL	TITLE	COUNTY	DATE
BURNSIDE				WOOD	5-31-74
SMITH				S. R. 18	WEATHER Cloudy
BOWERS				SEC. E 1/4 Cor. Sec. 23	TEMP. +78°
MEAD					

DESCRIPTION SECTION CORNER CONTROL TIES JOB NO. \_\_\_\_\_

LEFT CENTER LINE RIGHT



PERSONNEL TITLE PERSONNEL TITLE  
MORRISON

COUNTY Wood.

DATE April, 23, 1969

S. R. #235 old SR#69

WEATHER Cloudy & Windy

SEC. from SR#18 North.

TEMP. +40°

DESCRIPTION Ties to Control Points

LEFT

CENTER LINE

RIGHT

JOB NO.

