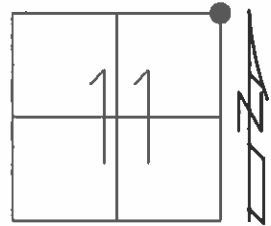


O.D.O.T. DISTRICT 2 SURVEY OFFICE (USE ONLY)

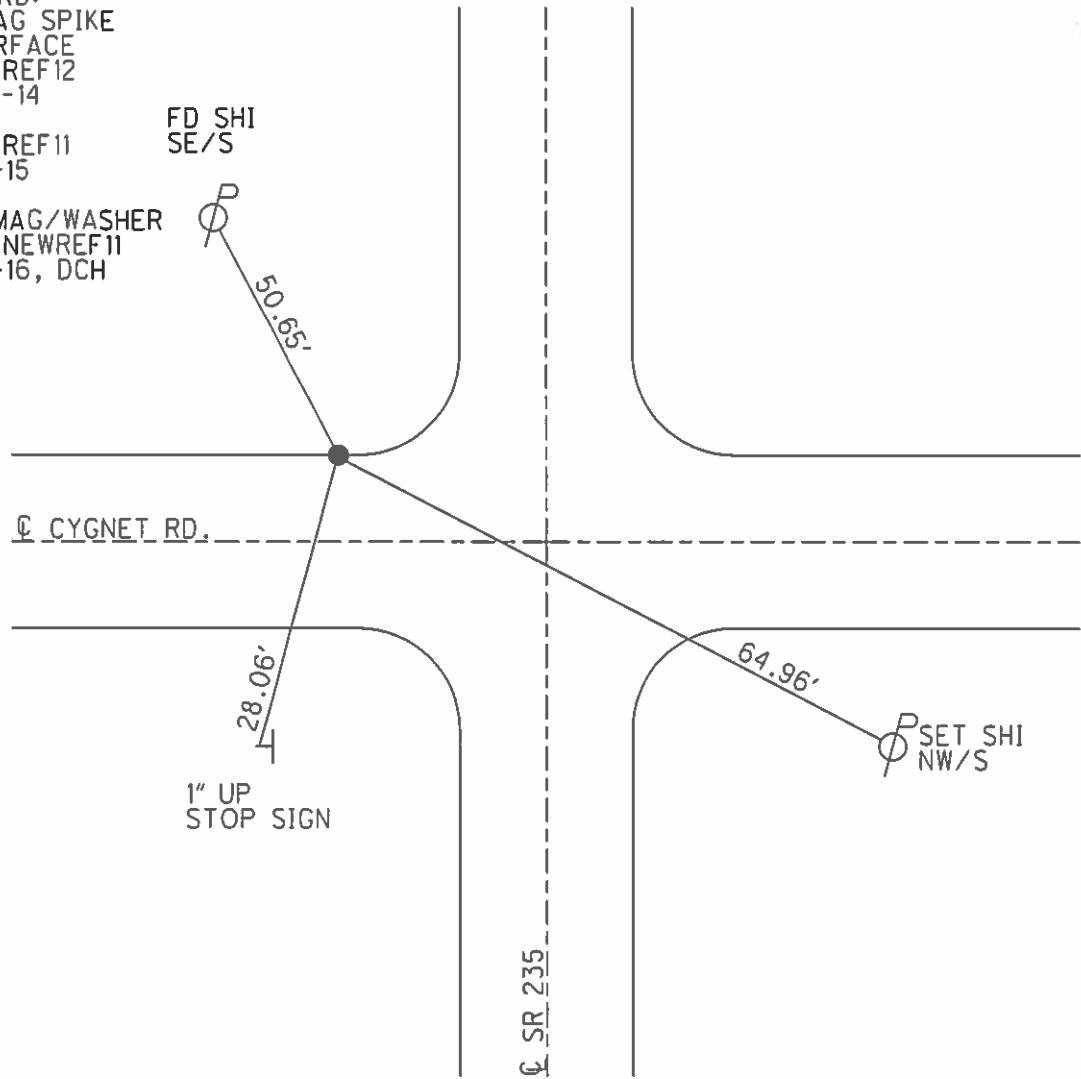
PERSONNEL _____ REFERENCE NO. 11 SHEET 9 OF 26
 NOTES RHOADES DATE 8-27-15 ROUTE SR 235
 H.C. O'DONNELL WEATHER SUNNY COUNTY WOOD
 R.C. RHOADES TEMP. 62°F TOWNSHIP JACKSON
 _____ SECTION 11
 _____ T 3 N R 9 E

TYPE MONUMENT MAG/WASHER
 ON SURFACE - ~~BELOW~~ ON _____
 LEFT - ☉ PAV'T - ~~RIGHT~~ 17.5'
 _____ TO _____ EDGE PAVEMENT
 S.L.M. 264+33.97



Grid: Northing: 575990.7971 Easting: 1615062.0183

RECORD:
 FD MAG SPIKE
 @ SURFACE
 GPS, REF12
 10-22-14
 GPS, REF11
 8-27-15
 SET MAG/WASHER
 GPS, NEWREF11
 7-28-16, DCH



O.D.O.T. DISTRICT 2 SURVEY OFFICE

PERSONNEL

REFERENCE NO. 11

SHEET 8 OF 23

NOTES Homan

DATE 9-24-03

ROUTE 235

H.C. Nuhfer

WEATHER Rain

COUNTY WOOD

R.C. Ballmer

TEMP. 55°

TOWNSHIP JACKSON

SECTION 11

T 3 N R 9 E

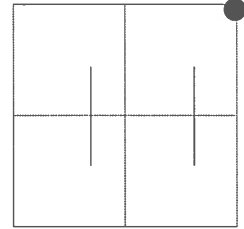
TYPE MONUMENT Sm R.R. Spike

~~ON SURFACE~~ - BELOW 3"

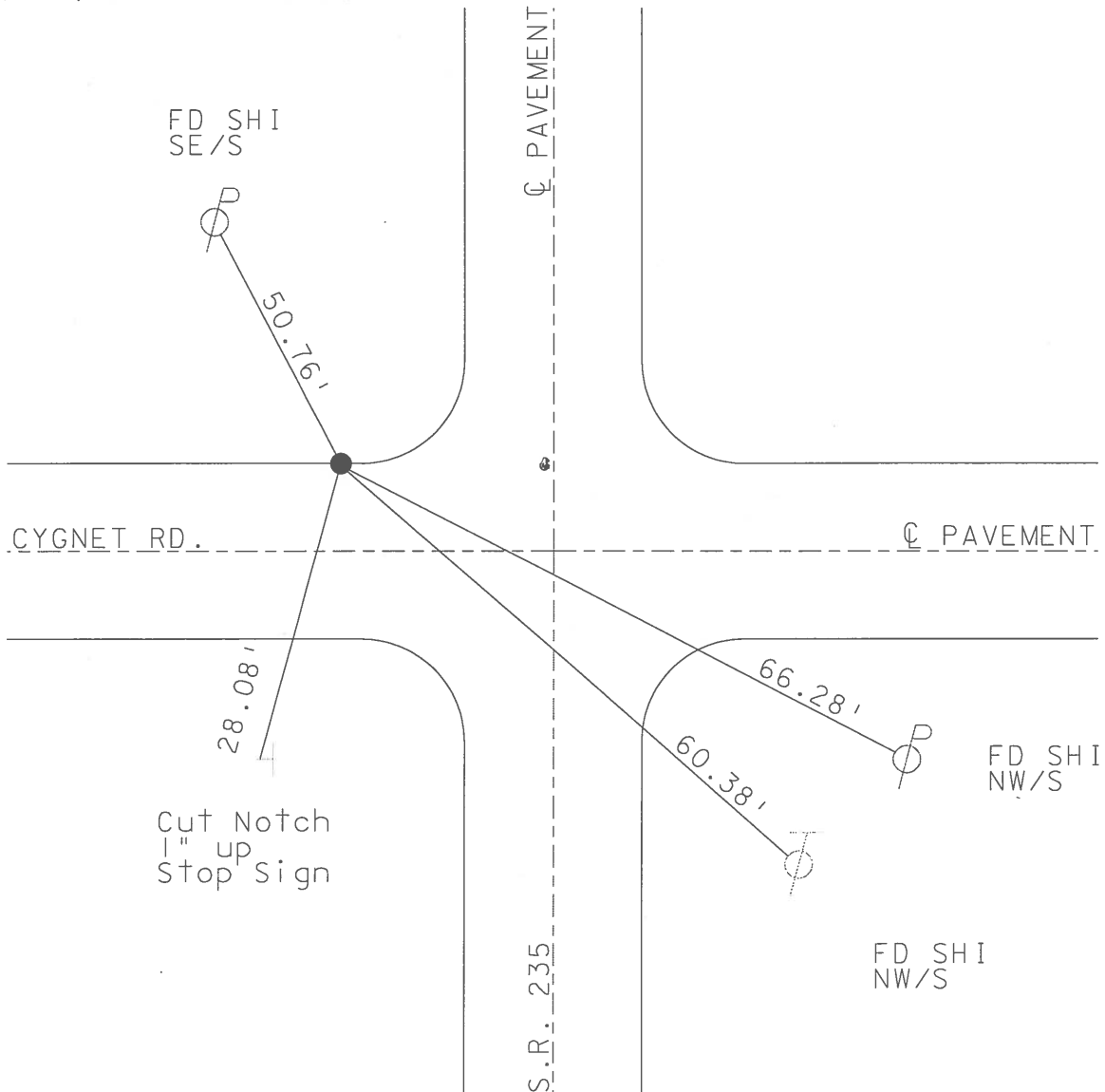
~~LEFT - C PAVT - RIGHT~~ 17.5' LT C

TO EDGE PAVEMENT

S.L.M. 263+44



POINT NOT DISTURBED 2003



O.D.O.T. DISTRICT 2 SURVEY OFFICE

PERSONNEL _____

REFERENCE NO. 11

SHEET 7 OF 28

NOTES Barnhisel

H.C. Cordes

R.C. V. Scott

DATE 07-14-95

WEATHER Sunny

TEMP. +85° F

ROUTE 235

COUNTY Wood

TOWNSHIP Jackson

SECTION 11

T 3 N R 9 E

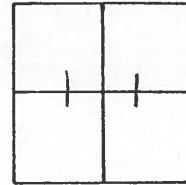
TYPE MONUMENT Sm. R.R. spk.

~~ON SURFACE~~ **(BELOW)** .5 below

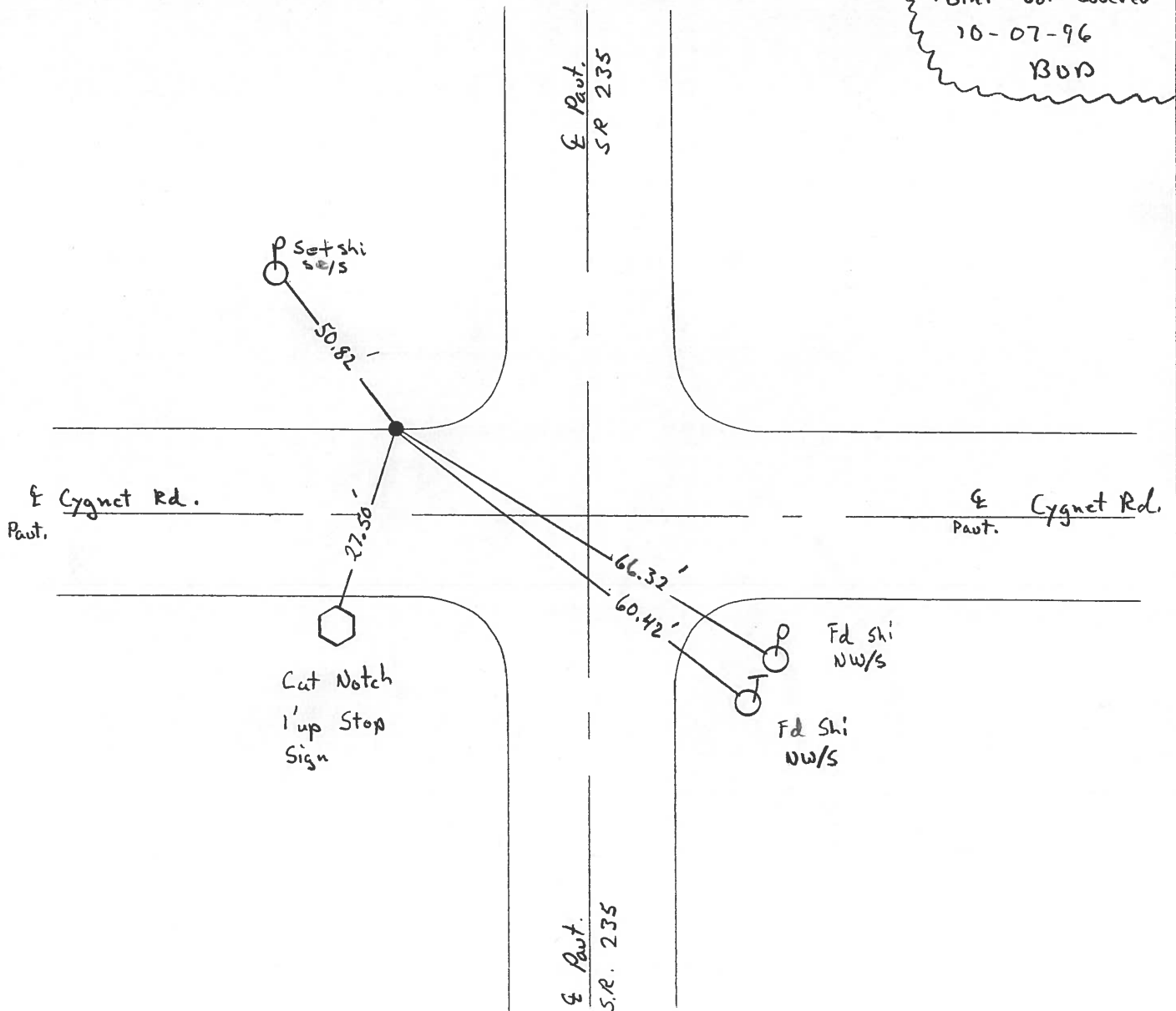
(LEFT - & PAVT.) ~~RIGHT~~ 17.5' Lt of E

TO EDGE PAVEMENT

S.L.M. 263 + 44



Point Not Covered
10-07-96
BOR



O.D.O.T. DISTRICT 2 SURVEY OFFICE

PERSONNEL _____

REFERENCE NO. 11

SHEET _____ OF _____

NOTES BARNHISEL

H.C. Loehrke

R.C. HOFFMAN

DATE 6-3-86

WEATHER SUNNY

TEMP. +55°

ROUTE 235

COUNTY WOOD

TOWNSHIP JACKSON

SECTION 11

T 3 N R 9 E

TYPE MONUMENT Sm RR Spk

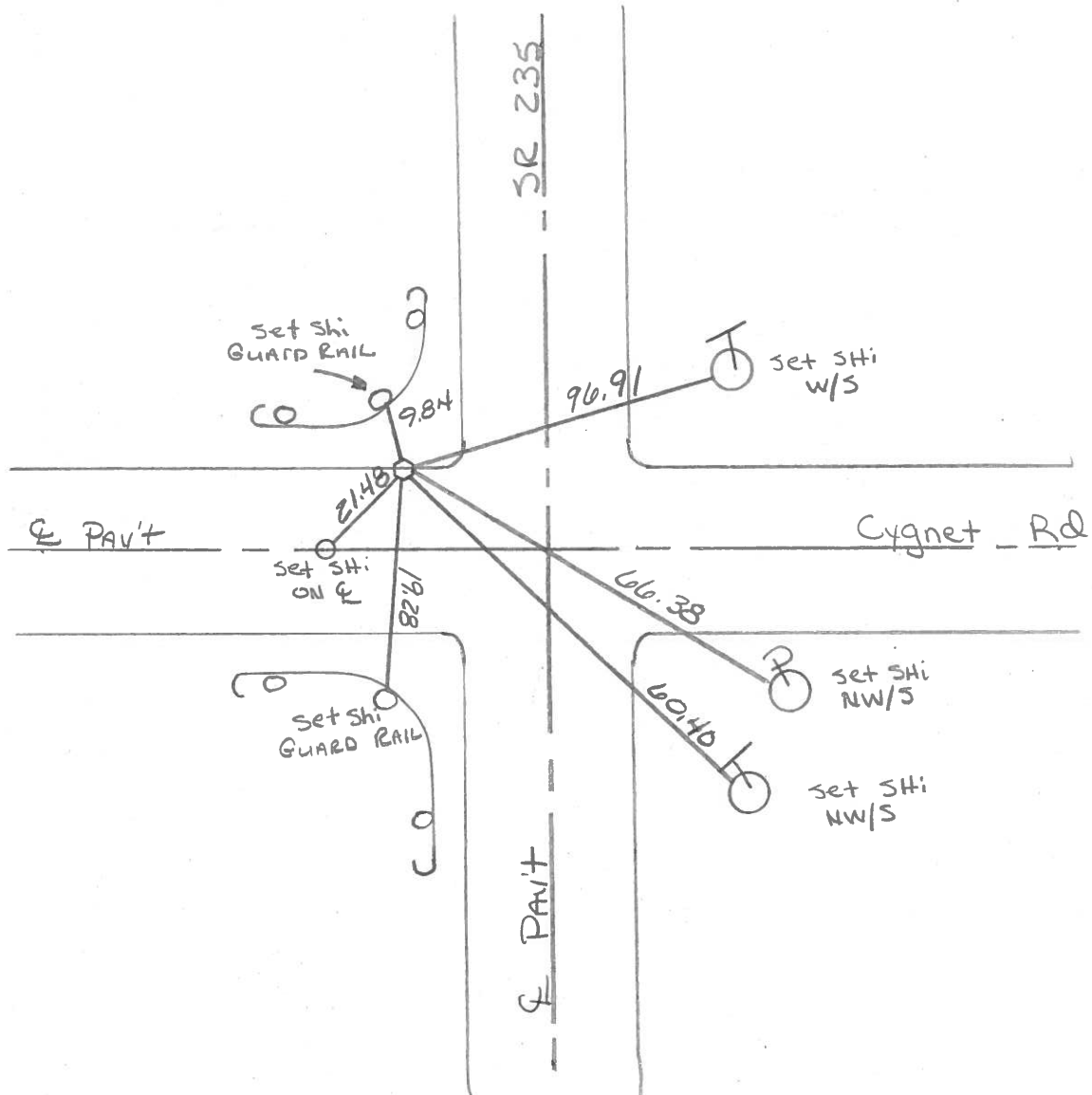
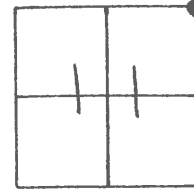
ON SURFACE - ~~BELOW~~ yes

LEFT-~~C~~ PAV'T. - RIGHT 18.5

~~TO~~ EDGE PAVEMENT 7/8 N Edge of Cygnet West

S.L.M. 263+44

Set Sm RR Spk
6-26-86
7103

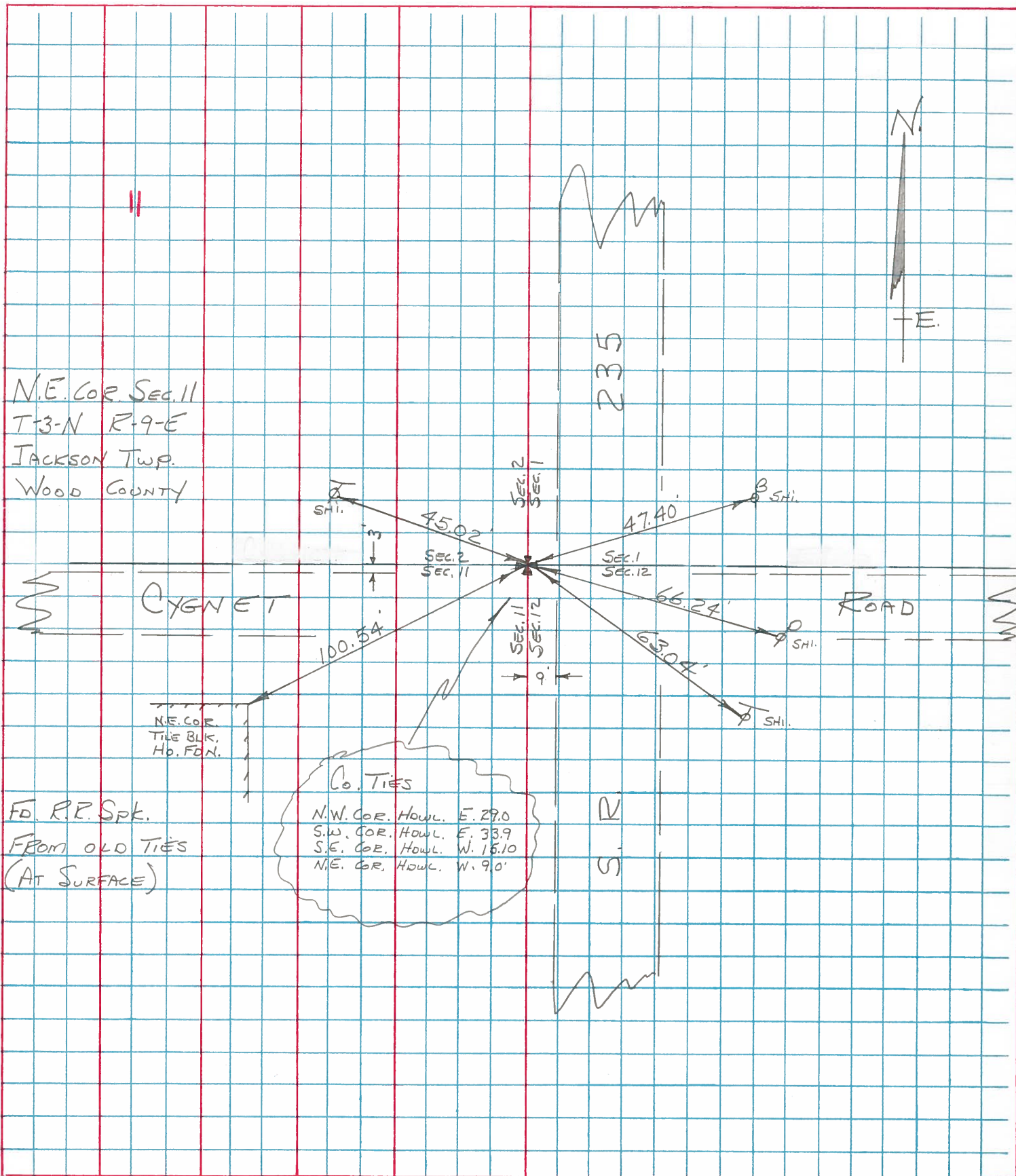


PERSONNEL TITLE PERSONNEL TITLE
 BURNSIDE _____
 SMITH _____
 BOWERS _____
 MEAD _____

COUNTY Wood DATE 12-23-75
 S. R. 235 WEATHER Cloudy
 SEC. N.E. COR. SEC. 11 TEMP. +27°

DESCRIPTION & CONTROL TIES

JOB NO. _____



PERSONNEL TITLE PERSONNEL TITLE

COUNTY Wood DATE 12-13-57

S. R. #69 WEATHER 4-14-60

SEC. TEMP.

DESCRIPTION

LEFT

CENTER LINE

RIGHT

JOB NO.

SW. cor. sec. 1 Jackson
Twp. Stone set R.R. Spk.
Cygnet Rd.
#67

11

60' SW
Shi. in Anchor Post E. 47.35
Shi. in T. Pole W.W.W. 45.04
E. Shiner in Pole 47.35
N.E. cor. N. Hdwl. N.W. 10.51
S.E. cor. S. Hdwl. S.W. 20.91
Shiner in T.P. S.E. 63.02
Shiner in 30' Etn. S.W. 51.40
W. edge of pavement E. 8.90
W.W.W. Shiner T. Pole 45.02

E 1/4 post sec. 2 Jackson
Twp. Found Hub over
Stone set pipe
#68

12

~~Cons. man gone N.W. 37.2~~
Cons. man S.W. 39.10
Shiner in 28" Apple N.E. 66.43
Shiner in T.P. S.E. 60.10
Shiner in P.P. W.S.W. 36.70

NE. cor. sec. 2 Jackson
Twp. R.R. Spk.
Jerry City Rd.
#69

13

Shi. in T. Pole W.S.W. 74.53
N.W. cor. Hdwl. S.S.W. 14.60
S.W. cor. Hdwl. E.E.E. 33.58
Shiner in P.P. S.W.S. 49.55
East to Stone #70 33.10

SW. cor. sec. 26, Milton
Twp. Found Shiner Fd. Iron Pir.
Jerry City Rd.
#70

14

Shi. in Guard Rail Post E.N.E. 27.67
N.W. cor. Hdwl. W.S.W. 43.43
Shiner in P.P. S.W. 74.75
Shiner in P.P. E.E.E. same 43.76
N.E. cor. stone Hdwl. S.S.E. 27.67
Shi. in Guard Rail Post No 23.92
Shi. in T.P. N.E. 3517
Shiner in G. Post S.S.E. 1990

E 1/4 part of the S.E. 1/4
Sec. 26 Milton Twp. Stone
Fd. R.R. Spk. 3' below surface
#71

Stone W. 30.17
Shiner in T.P. S.W. 78.77
Shiner in T.P. S.E. 48.22
Shiner in P.P. W. cor. 37.77
Iron pipe S.W. 37.77
Shi. T. Pole N.N.E. 14.75

PERSONNEL	TITLE	PERSONNEL	TITLE

COUNTY Wood DATE 12-13-57
4-14-60
 S. R. #69 WEATHER 1-18-66
 SEC. _____ TEMP _____

DESCRIPTION	LEFT	CENTER LINE	RIGHT	JOB NO.
S.W. Cor. sec. 1 Jackson Twp. Stone set R.R. Spt. ✓ Cygnet Rd. #67	11	60' E/W	✓ Shi. in Anchor Post E. 47.35 ✓ Shi. in T. Pole W.N.W. 45.04 ✓ E. Shiner Stone Pole 47.32 ✓ N.E. Cor. N. Hdwl. N.W. 10.48 ✓ S.E. Cor. S. Hdwl. S.W. 20.91 32.72 ✓ Shiner in T.P. S.E. 63.02 53.02 ✓ Shiner in 30" Elm Stk. 51.40 ✓ W. edge of pavement E. 8.80 ✓ W.N.W. Shiner T. Pole 45.04	
E 1/4 post sec. 2 Jackson Twp. Found Hub over Stone - set pipe ✓ #68	12		✓ Cons. man. N.W. 32.2 ✓ Cons. man. S.W. 34.10 ✓ Shiner in 14" Apple N.E. 66.43 ✓ Shiner in T.P. S.E. 63.10 ✓ Shiner in P.P. S.E.W. 33.71	
N.E. Cor. sec. 2 Jackson Twp. R.R. Spt. ✓ Jerry City Rd. #69	13		✓ Shi. in T. Pole W.S.W. 74.53 ✓ N.W. Cor. Hdwl. S.E.W. 14.60 ✓ S.W. Cor. Hdwl. S.E.S. 33.52 ✓ Shiner in T.P. W.S.S. 40.50 ✓ East to Stone #70 53.16	
S.W. cor sec. 36 Milton Twp. Found Shiner Fd. Iron Pin Jerry City Rd. #70	14		✓ Shi. in Guard Rail Post E.N.E. 27.6 ✓ N.W. Cor. Hdwl. W.S.W. 43.43 ✓ Shiner in P.P. S.W. 57.15 Shiner in P.P. S.E.S. gone 43.96 N.E. Cor. Stone Hdwl. S.E. 60' 24' 51' ✓ Shi. in Guard Rail Post No 23.92	
E 1/4 post of the S.E. 1/4 Sec. 35 Milton Twp. Stone. Fd. R.R. Spt. 3" Below Surface #71			Stone W. 30.17 Shiner in T.P. S.W. 72.78 ✓ Shiner in T.P. S.E. 48.22 Shiner in P.P. W. gone 33.33 Iron Stan Spt N.E. 27.15 ✓ Shi. T. Pole N.N.E. 140.75 ✓ T.RAN FENCE POST (1) 33.00	

SET R.R. SPT.
7-28-69

PERSONNEL	TITLE	PERSONNEL	TITLE	COUNTY	DATE
				Wood	12-13-57
				#69	4-14-60
					1-18-66
				SEC.	TEMP.

60' 9" W

DESCRIPTION	LEFT	CENTER LINE	RIGHT	JOB NO.
S.W. Cor. sec. 1 Jackson Twp. - Stone set R.R. spk. ✓ Cygnat Rd.	#67	11	✓ Shi. in Anchor Post E. 47.35' ✓ Shi. in T. Pole W.N.W. 45.04' ✓ E. Shiner Brace Pole 47.35' ✓ N.E. Cor. N. Hdwl. N.W. 10.48' ✓ S.E. Cor. S. Hdwl. S.W. 20.91 20.72' ✓ Shi. in T.P. S.E. 63.02 63.02' ✓ Shi. in 30' Elm S.W. 54.40' ✓ W. edge of pavement E. 8.80' ✓ W.N.W. Shiner T. Pole 45.04'	
E 1/4 post sec. 2 Jackson Twp. Found Hub over stone - set pipe ✓	#68	12	✓ Conc. mon. N.W. 32.27' ✓ Conc. mon. S.W. 39.10' ✓ Shiner in 14" Apple N.E. 66.43' ✓ Shiner in T.P. S.E. 60.10' ✓ Shiner in P.P. W.S.W. 36.77'	
N.E. Cor. sec. 2 Jackson Twp. R.R. spk. ✓ Jerry City Rd.	#69	13	✓ Shi. in T. Pole W.S.W. 74.53' ✓ N.W. Cor. Hdwl. S.S.W. 19.60' ✓ S.W. Cor. of Hdwl. E of S. 32.58' ✓ Shiner in T.P. W of S. 40.50' ✓ East to stone #70 33.18'	
S.W. Cor. sec. 36. Milton Twp. Found shiner Fd. Iron Pin ✓ Jerry city Rd.	#70	14	✓ Shi. in Guard Rail/Post E.N.E. 27.67' ✓ N.W. Cor. Hdwl. W.S.W. 43.43' ✓ Shiner in P.P. S.W. 57.15' Shiner in P.P. E of S. Gone 42.96' N.E. cor. stone Hdwl. E.S.E. ^{No} 24.61' ✓ Shi. in Guard Rail Post No 23.92'	
E 1/4 post of the S.E. 1/4 Sec. 35 Milton twp. - Stone Fd. R.R. Spk. 3' Below Surface	#71		Stone W. 30.17' Shiner in T.P. S.W. 98.78' ✓ Shiner in T.P. S.E. 48.22' Shiner in P.P. W. Gone 33.60' Iron sign stk N.E. 37.15' Shi. T. Pole N.N.E. 140.75'	

PERSONNEL	TITLE	PERSONNEL	TITLE

COUNTY Wood DATE 12-13-57
4-14-60
 S. R. #69 SR 235 WEATHER _____
 SEC. _____ TEMP. _____

60' P/W JOB NO. _____

DESCRIPTION	LEFT	CENTER LINE	RIGHT	JOB NO.
SW. Cor. sec. 1 Jackson Twp. - Stone set R.R. spt. Cygnet Rd. #67	9/10/65 Morrison	ck 11-27-59 Jensen	Shi. in Anchor Post E. 47.35 Shi. in T. Pole N.W. 45.00 E. Shiner Brace Pole 47.35 N.E. Cor. N. Hdwl. N.W. 10.48 S.E. Cor. S. Hdwl. S.W. 20.91 20.72 Shiner in T.P. S.E. 63.02 63.02 Shiner in 30' Elm S.W. 54.40 W. edge of pavement E. 10.80 W.N.W. Shiner T. Pole 45.04	
E 1/4 past sec. 2 Jackson Twp. Found Hub over stone - set pipe #68	9/10/65 Morrison		Conc. mon. N.W. 32.52 Conc. mon. S.W. 39.35 Shiner in 14" Apple N.E. 66.32 Shiner in T.P. S.E. 60.0 Shiner in P.P. W.S.W. 36.85	
N.E. Cor. sec. 2 Jackson Twp. R.R. spt. Jerry City Rd. #69	9/10/65 Morrison		Shi. in T. Pole W.S.W. 74.53 N.W. Cor. Hdwl. S.S.W. 14.5 S.W. Cor. of Hdwl. E. of S. 32.58 Shiner in T.P. W. of S. 40.50 East to stone #70 33.18	
S.W. Cor. sec. 38 Milton Twp. Found shiner Jerry City Rd. #70			Shi. in Guard Rail Post E.N.E. 27.52 N.W. Cor. Hdwl. W.S.W. 60.00 43.28 Shiner in P.P. S.W. 57.15 Shiner in P.P. E. of S. Gone 42.96 N.E. Cor. stone Hdwl. E.S.E. 60.00 24.61 Shi. in Guard Rail Post No 23.72	
E 1/4 past of the S.E. 1/4 Sec. 38 Milton Twp. - Stone #71			Stone W. 30.17 Shiner in T.P. S.W. 98.78 Shiner in T.P. S.E. 48.22 Shiner in P.P. W. Gone 33.65 Iron sign stk N.E. 37.15	