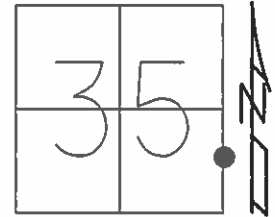


O.D.O.T. DISTRICT 2 SURVEY OFFICE (USE ONLY)

PERSONNEL _____ REFERENCE NO. 14 A SHEET 13 OF 26
 NOTES RHOADES DATE 8-27-15 ROUTE SR 235
 H.C. O'DONNELL WEATHER SUNNY COUNTY WOOD
 R.C. RHOADES TEMP. 62°F TOWNSHIP MILTON
 _____ SECTION 35
 _____ T 4 N R 9 E

TYPE MONUMENT PK/WASHER
 ON SURFACE - ~~BELOW~~ ON _____
 LEFT - ☉ PAV'T - ~~RIGHT~~ 1.3'
10.2' TO RT EDGE PAVEMENT
 S.L.M. 332+42.39



Grid: Northing: 582765.8858 Easting: 1615098.1960

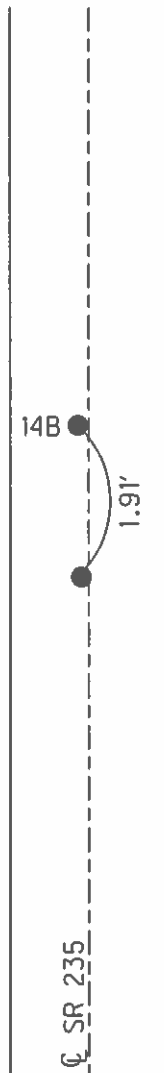
RECORD:
 NOTE: NO PERMANET
 REF TIES AVAILABLE
 POINTS HELD- RESET
 USING TEMPORAY HUBS 2003

FD MAG/WASHER
 11-3-03, DCH

FD MAG NAIL
 GPS, REF16
 10-22-14

GPS, REFA14
 8-27-15

ALL TIES DESTROYED
 SET MAG/WASHER
 W/COORDINATES
 GPS, NEWREFA14
 9-6-16, JFO



O.D.O.T. DISTRICT 2 SURVEY OFFICE

PERSONNEL

REFERENCE NO. 14-A

SHEET 11 OF 23

NOTES Homan

DATE 9-24-03

ROUTE 235

H.C. Nuhfer

WEATHER CLOUDY

COUNTY WOOD

R.C. Ballmer

TEMP. 60°

TOWNSHIP MILTON

SECTION 35

T 4 N R 9 E

TYPE MONUMENT PK & Washer

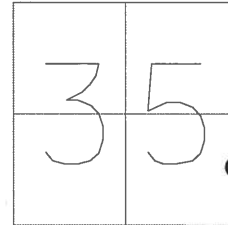
ON SURFACE - BELOW on surface

LEFT - Q PAV'T - RIGHT A; 1.3' - B: 0.5'

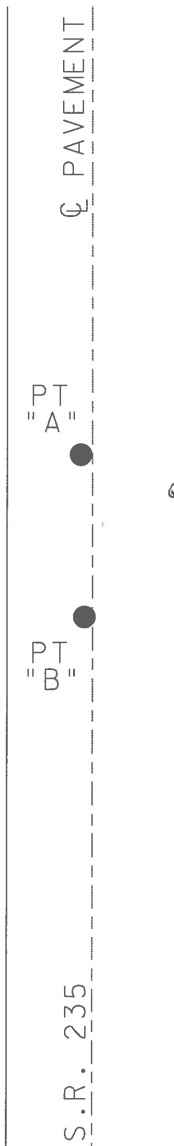
A 10.2' RT

B 9.4' TO RT EDGE PAVEMENT

S.L.M. 331+31 PT "B"



PT "A"
Mag. & Washer
PT "B"
PK & Washer
11-3-03
DCH



Note:
No permanent Ref. TIES
Available.
Points held - reset - using
Temporary Hubs. 2003

O.D.O.T. DISTRICT 2 SURVEY OFFICE

PERSONNEL

REFERENCE NO. 14-A

SHEET 10 OF 28

NOTES BDB VANDUSEN

H.C. KEVIN MOSER

DATE 7-30-96

ROUTE S.R. 235

R.C. BRAD STIFFLER

WEATHER CLOUDY

COUNTY WOOD

TEMP. +70°F

TOWNSHIP MILTON

SECTION 35

T 4 N R 9 E

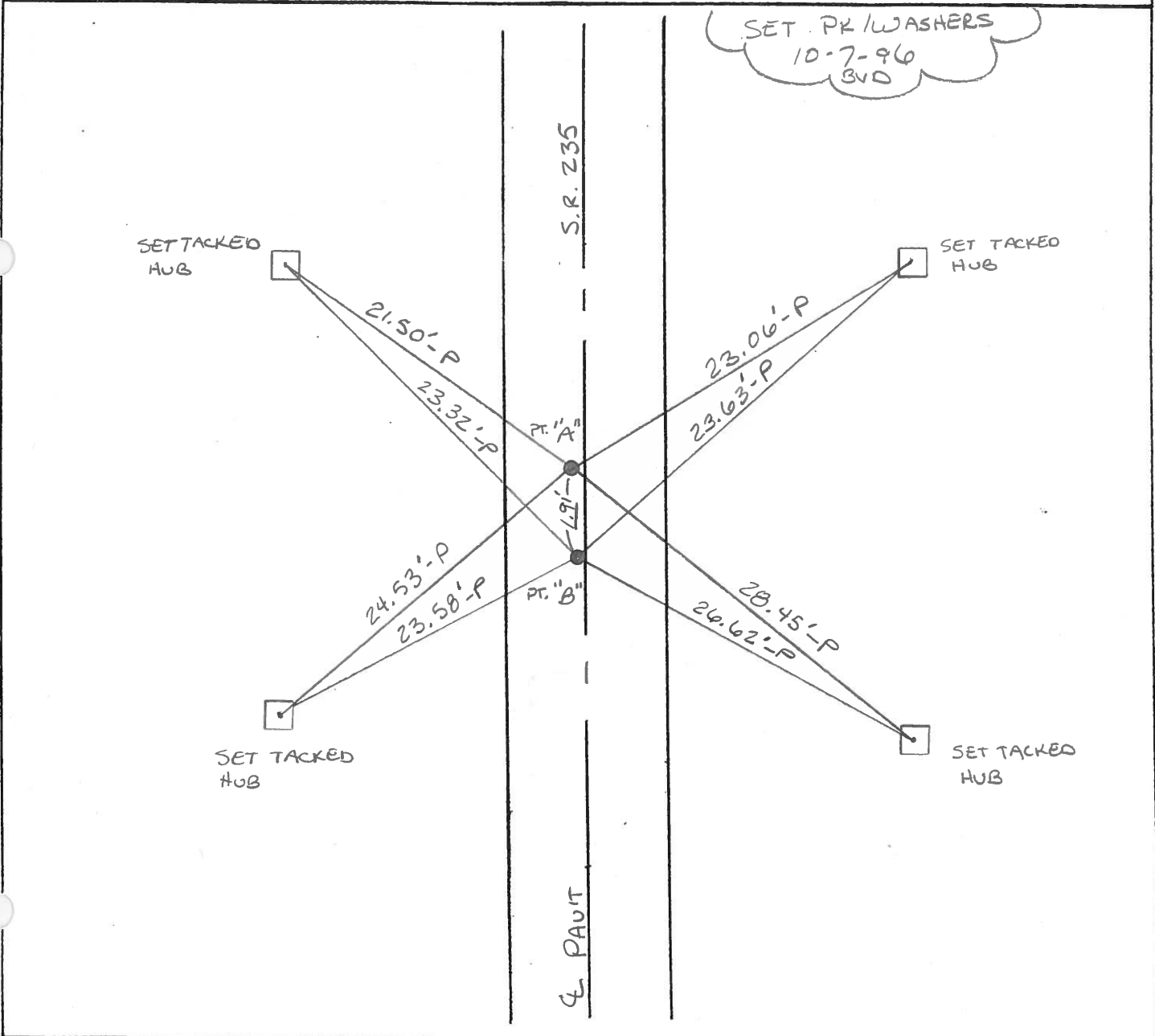
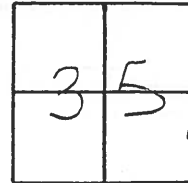
TYPE MONUMENT PT "A" LG RR SPIKE PT "B" Sm. RR SPIKE

ON SURFACE - ~~BELOW~~ SURFACE

LEFT - ~~C~~ PART - RIGHT "A" - 1.3 "B" - 0.5'

^{A - 10.2}
^{B - 9.4} TO ^{RT} ^{RT} EDGE PAVEMENT

S.L.M. 331 + 31 PT "B"



O.D.O.T. DISTRICT 2 SURVEY OFFICE

PERSONNEL

REFERENCE NO. 14-A

SHEET OF

NOTES BARNHISEL

H.C. Loehrke

R.C. HOFFMAN

DATE 6-3-86

WEATHER SUNNY

TEMP. +65°

ROUTE 235

COUNTY WOOD

TOWNSHIP MILTON

SECTION 35

T44R9E

TYPE MONUMENT Pt "A" Lg RR Spk Pt "B" Sm RR Spk

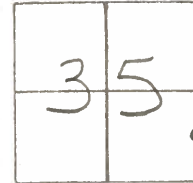
ON SURFACE - BELOW yes

LEFT - PAV'T. - RIGHT Pt "A" 1.5' Pt "B" .7'

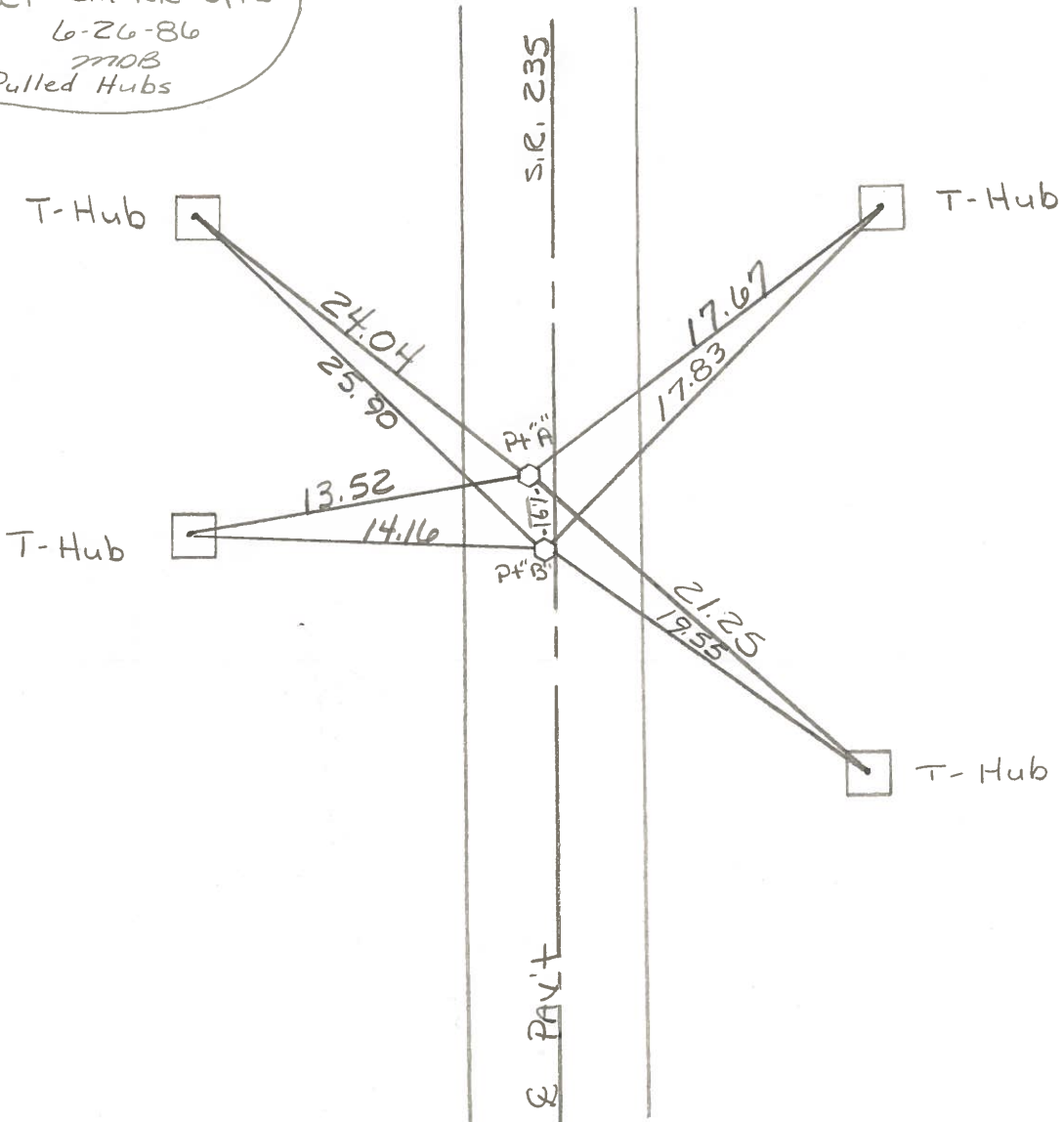
Pt "A" 7.70 Lt EDGE PAV'T Pt "B" 8.5 to Lt Ed pav't

S.L.M. 331 + 32

1.91 Between Pts.



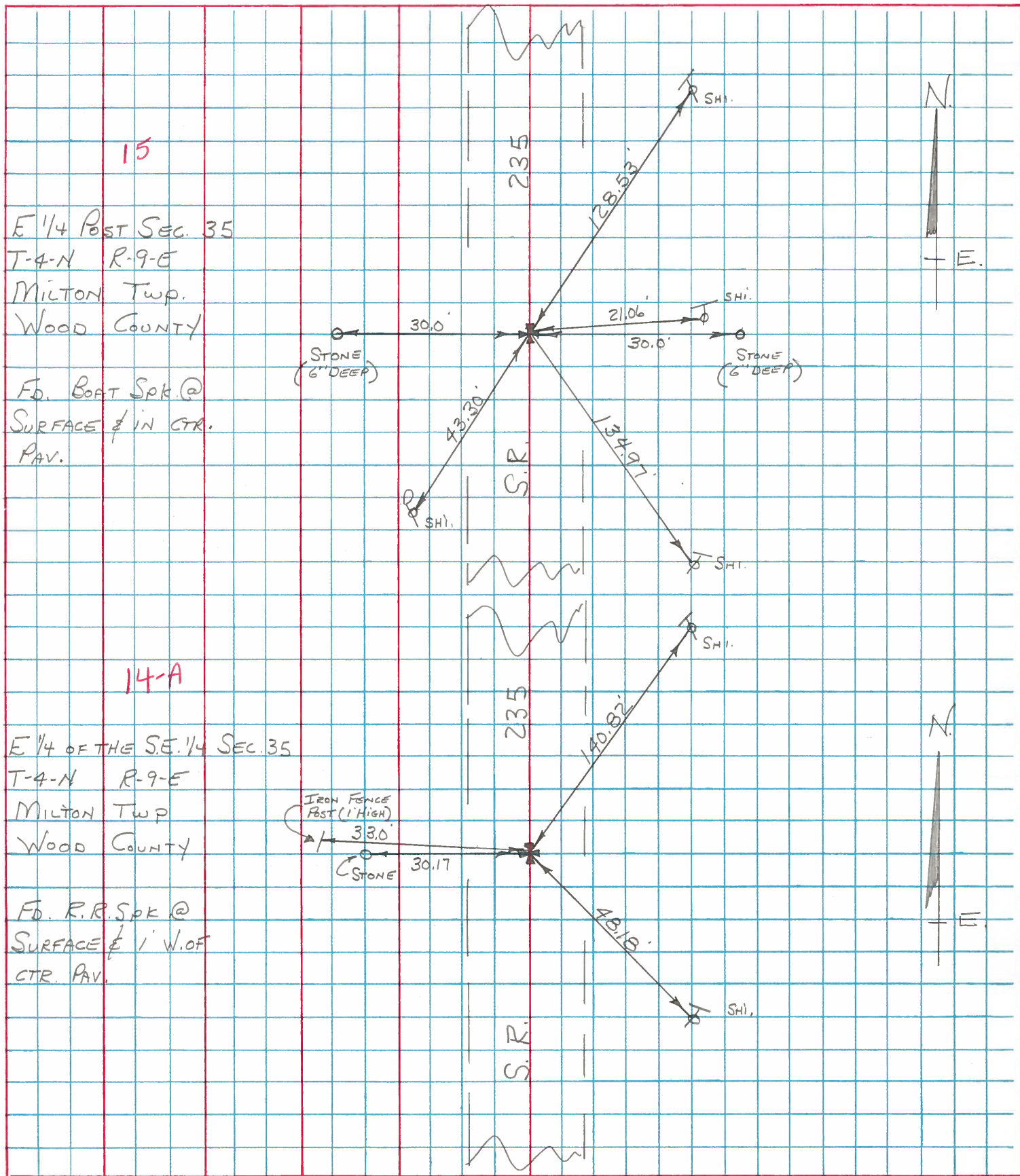
Set Sm RR Spks
6-26-86
MOB
Pulled Hubs



PERSONNEL TITLE PERSONNEL TITLE
 BURNSIDE _____
 SMITH _____
 BOWERS _____
 MEAD _____

COUNTY WOOD DATE 12-24-75
 S. R. 235 WEATHER CLEAR
 SEC. 35 TEMP. +18°

DESCRIPTION ± CONTROL TIES JOB NO. _____



PERSONNEL TITLE PERSONNEL TITLE
SILVESTER _____

COUNTY Wood DATE 7-69

S. R. # 235 WEATHER _____

SEC. _____ TEMP. _____

DESCRIPTION LEFT CENTER LINE RIGHT JOB NO.

DESCRIPTION	LEFT	CENTER LINE	RIGHT	JOB NO.
#68 E 1/4 Post Sec 2 Jackson Twp Found Stone Set Pipe over Stone	#12		Conc. Mt. SW. 39.10 Shiner in 28" Apple N.E. 66.43 ✓ " " T. Pole SE. 60.10 " " P. " W.S.W. 36.77	
#69 N.E. Cor. Sec. 2 Jackson Twp, R.R. Spk.	#13		Shiner in T. Pole W.S.W. 74.53 N.W. Cor. Hd. wall S.S.W. 14.60 Sw. " " " E. of S. 32.58 Shiner in P. Pole SW. 49.56 E. to Stone #70 33.18	
#70 Sw. Cor. Sec. 36 Milton Twp Ad Iron Pile Jerry City Rd.	#13A	(14)	N.W. Cor. Hd. wall W.S.W. 43.43 Shiner in P. Pole SW. 74.76 " " T. Pole N.E. 35.17 " " S. Rail Post S.S.E. 19.90 W. to Stone or R.R. Spk. 33.18	
#71 E 1/4 post of the SE. 1/4 Sec 35 Milton Twp. Stone. Ad R.R. Spk on Top 3' below surface	#14	(14A)	Stone W. 30.17 Shiner in T. Pole SE. 48.22 Iron fence post W. 33.00 Shiner in T. Pole N.N.E. 140.75	
#72 W. 1/4 Post Sec. 36 Milton Twp. Stone Rd.	#15		Shiner in T. Pole E. 21.02 Stone E. 30.0 " W. 30.0 Shiner in P. Pole S.W. 43.30 " " W. Cherry E. 54.70	