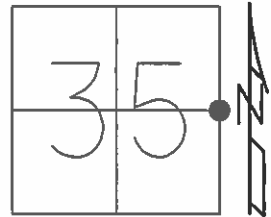


O.D.O.T. DISTRICT 2 SURVEY OFFICE (USE ONLY)

PERSONNEL _____ REFERENCE NO. 15 SHEET 15 OF 26
 NOTES RHOADES DATE 8-27-15 ROUTE SR 235
 H.C. O'DONNELL WEATHER SUNNY COUNTY WOOD
 R.C. RHOADES TEMP. 62°F TOWNSHIP MILTON
 _____ SECTION 35
 _____ T 4 N R 9 E

TYPE MONUMENT PK/WASHER
 ON SURFACE - ~~BELOW~~ ON
 LEFT - ☉ PAV'T - RIGHT ON
8.8 TO RT EDGE PAVEMENT
 S.L.M. 345+69.12

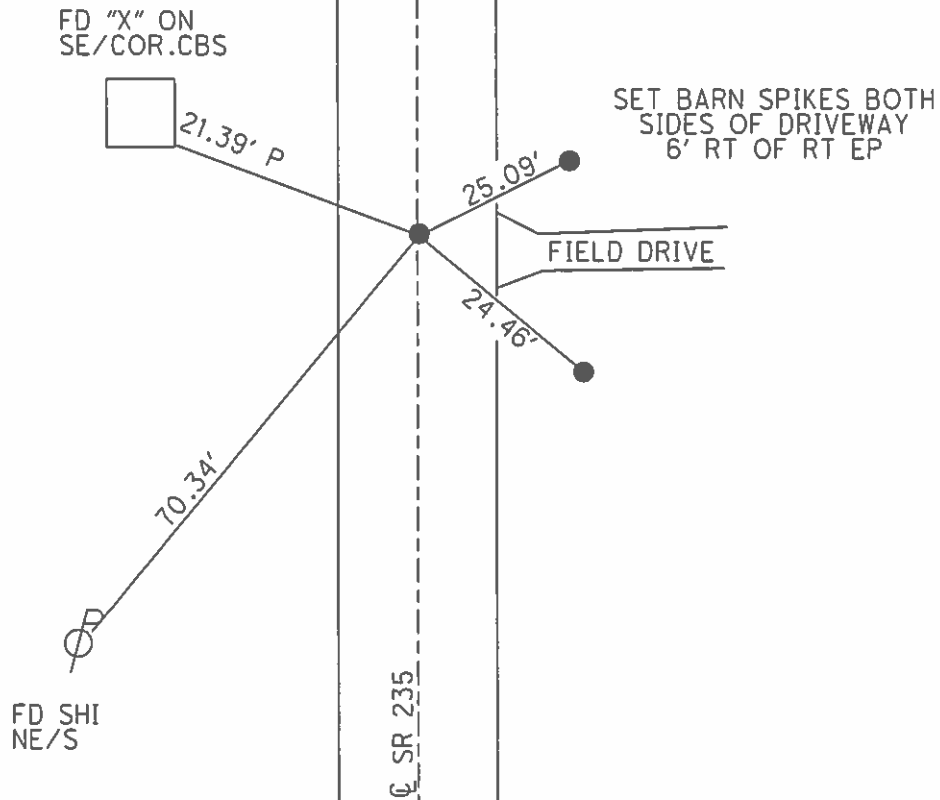


Grid: Northing: 584092.4603 Easting: 1615098.1076

RECORD:
 SET MAG & WASHER
 11-3-03, DCH

GPS, REF15
 8-27-15.

SET MAG/WASHER
 GPS, NEWREF15
 7-28-16, DCH



O.D.O.T. DISTRICT 2 SURVEY OFFICE

PERSONNEL

REFERENCE NO. 15

SHEET 12 OF 23

NOTES Homan

DATE 9-25-03

ROUTE 235

H.C. Nuhfer

WEATHER Sunny

COUNTY WOOD

R.C. Ballmer

TEMP. 50°

TOWNSHIP MILTON

SECTION 35

T 4 N R 9 E

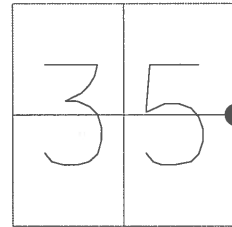
TYPE MONUMENT PK & Washer

ON SURFACE - ~~BELOW~~ on surface

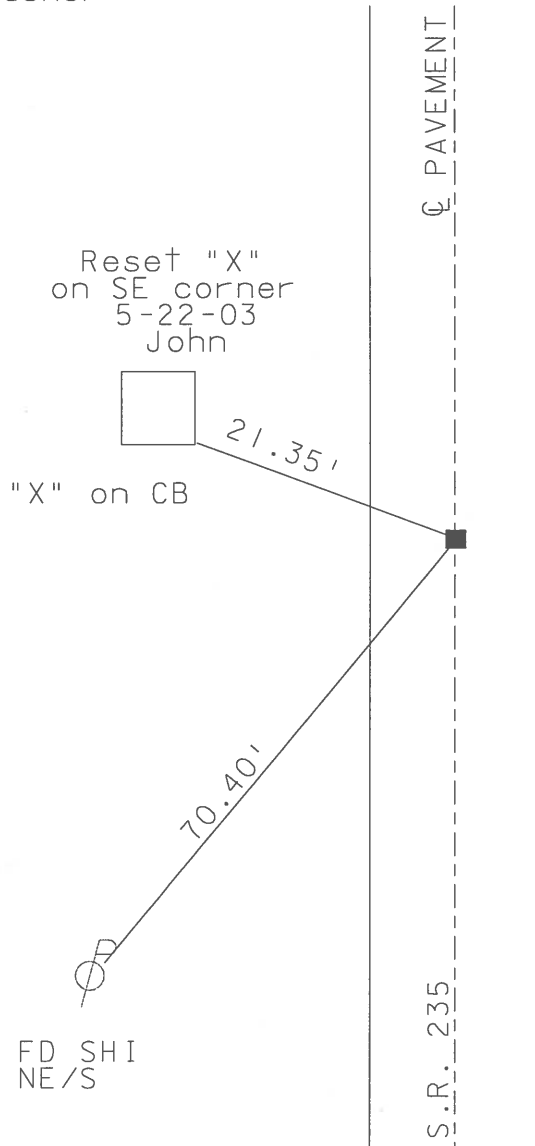
~~LEFT - C PAV'T - RIGHT~~ C

8.8 TO RT EDGE PAVEMENT

S.L.M. 344+58



Set Mag & Washer
11-3-03
DCH



O.D.O.T. DISTRICT 2 SURVEY OFFICE

PERSONNEL

REFERENCE NO. 15

SHEET 11 OF 28

NOTES BOB VAN DUSEN

H.C. KEVIN MOSER

DATE 7-17-95

ROUTE 235

R.C. BRAO STIFFLER

WEATHER SUNNY

COUNTY WOOD

TEMP. +80°F

TOWNSHIP MILTON

SECTION 35

T 4 N R 9 E

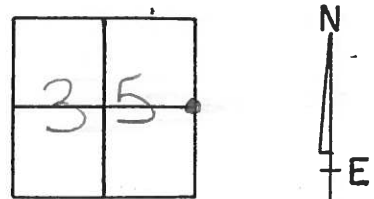
TYPE MONUMENT SM. R.R. SPIKE

ON SURFACE - ~~BELOW~~ SURFACE

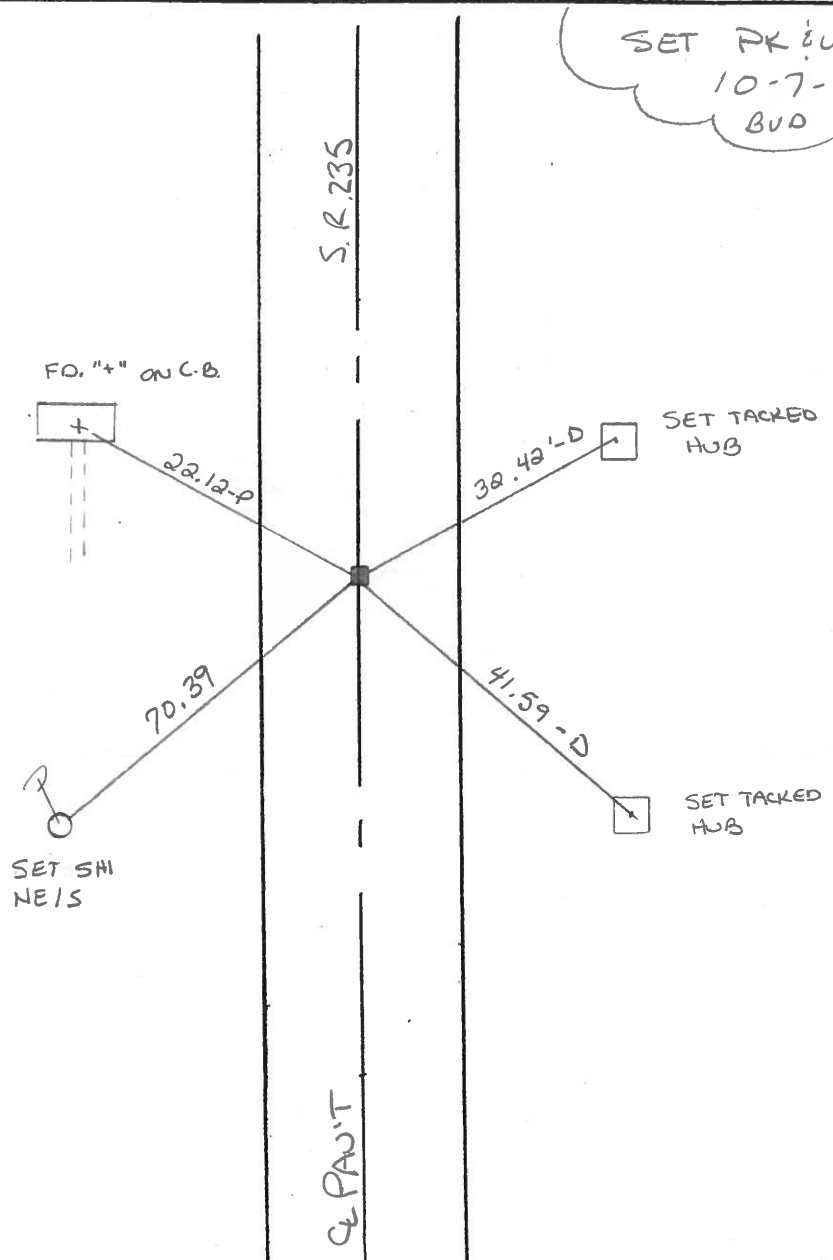
~~LEFT~~ & PAV'T. - RIGHT CL

8.8 TO RT EDGE PAVEMENT

S.L.M. 344+58



SET PK & WASHER
10-7-96
BVD



O.D.O.T. DISTRICT 2 SURVEY OFFICE

PERSONNEL

REFERENCE NO. 15

SHEET OF

NOTES BARNHISEL

H.C. Loehrke

R.C. Hoffman

DATE 6-3-86

WEATHER SUNNY

TEMP. +65°

ROUTE 235

COUNTY WOOD

TOWNSHIP MILTON

SECTION 35

T 4 N R 9 E

TYPE MONUMENT 3m RR Spk

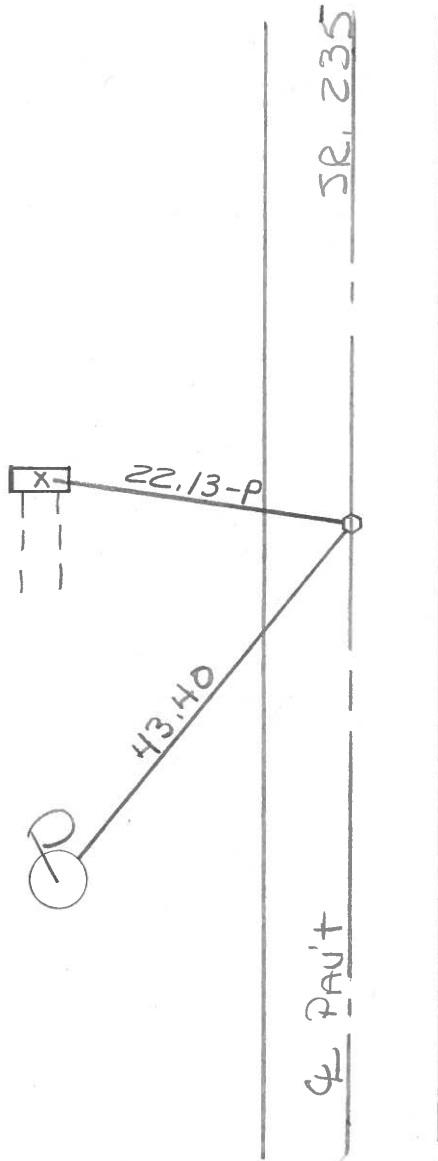
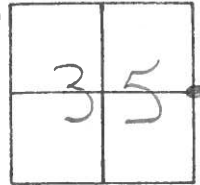
ON SURFACE - ~~BELOW~~ yes

LEFT - PAV'T. - RIGHT yes

8.4 TO LT EDGE PAVEMENT

S.L.M. 344+60

Set 3m RR Spk
6-26-86
MAB



PERSONNEL TITLE PERSONNEL TITLE

COUNTY WOOD

DATE 12-24-75

BURNSIDE

SMITH

S. R. 235

WEATHER CLEAR

BOWERS

MEAD

SEC. 35

TEMP. +18°

DESCRIPTION

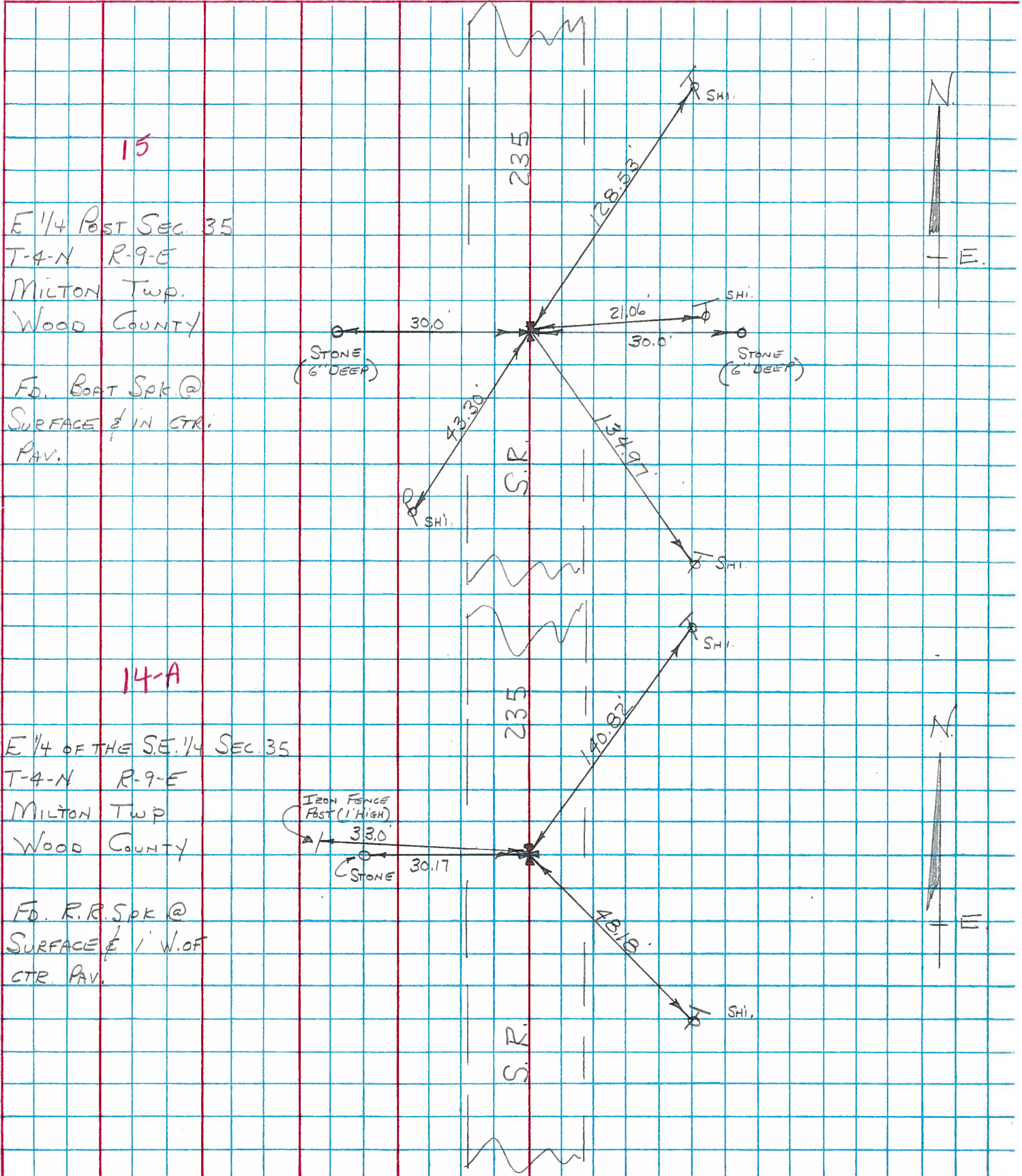
± CONTROL TIES

JOB NO.

LEFT

CENTER LINE

RIGHT



PERSONNEL TITLE PERSONNEL TITLE

SILVESTER

COUNTY Wood

DATE 7-69

S. R. # 235

WEATHER

SEC.

TEMP.

DESCRIPTION

LEFT

CENTER LINE

RIGHT

JOB NO.

#68 #12
E 1/4 Post Sec 2 Jackson Twp
Found Stone Set Pipe over Stone

Cont. Mt. Sw. 39.10
Shiner in 28" Apple N.E. 66.43 ✓
" " T. Pole S.E. 60.10
" " P. " W.S.W. 36.77

#69 #13
N.E. Cor. Sec. 2 Jackson Twp R.R. Spk.
Jerry City

Shiner in T. Pole W.S.W. 74.53
N.W. Cor. Hd. wall S.S.W. 14.69
Sw. " " " E. of S. 32.58
Shiner in P. Pole S.W. 49.56
E. to Stone #70 33.18

#70 #13A (14)
S.W. Cor. Sec 36 Milton Twp Rd Iron Pin
Jerry City Rd.

N.W. Cor Hd. wall W.S.W. 43.43
Shiner in P. Pole S.W. 74.76
" " T. Pole N.E. 35.17
" " S. Rail Post S.S.E. 19.90
W. to Stone or R.R. Spk. 33.18

#71 #14 (14A)
E 1/4 Post of the SE 1/4 Sec 35 Milton Twp.
Stone. Rd R.R. Spk on Top 3' below surface

Stone W. 30.17
Shiner in T. Pole S.E. 48.22
Iron fence post W. 33.00
Shiner in T. Pole N.N.E. 140.75

#72 #15
W. 1/4 Post Sec. 36 Milton Twp. Iron Rd.

Shiner in T. Pole E. 21.02
Stone E. 30.0
" W. 30.0
Shiner in P. Pole S.W. 43.30
" " W. Cherry E. 54.70

PERSONNEL	TITLE	PERSONNEL	TITLE

COUNTY Wood DATE 04-12-19-57
 S. R. #69 WEATHER 4-14-60
 SEC. _____ TEMP. _____

DESCRIPTION _____ LEFT _____ CENTER LINE _____ RIGHT _____ JOB NO. _____

W. 1/4 post sec. 36 Milton Twp. Stone Did not find ✓ #72	15	SET SMALL SPK. 7-28-69	SHI. T. POLE E 21.02 Stone E. 30.0 Stone W. 30.0 SHI. P. POLE S.W. 43.30 SHI. WILD CHERRY E 54.70 ✓ Shi. in T. Pole S.E. 46.37 ✓ Ditch marker leaning S.E. 42.75 ✓ S.E. cor. E. about, S.E. 40.50 ✓ W. cor. W. about, S.W. 28.35 ✓ Shiner in P.P. N.W. 34.80 Iron eye stake N.E. Gone ✓ Shi. P.P. N.N.W. 78.5 SHI. P. POLE N.N.E. 103.92
N.W. cor. sec. 36 Milton Twp. Stone 10' below surface of pavement. Set R.R. spike Boys Rd. #73	16	Set R.R. Spk. 7-28-69	Fence Post E. 20.05 Anchor post E. 20.25 Bushier post W. S.W. Gone ✓ T. Pole S.W. 46.20 ✓ Conc. mon. N.E. 23.63 ✓ Conc. mon. Spt E. 13.66 ✓ Shi. P. Pole S.S.E. 109.30
W. 1/4 post sec. 25. E.R. optional line N.W. 1/4 S.W. cor. posts 10' W. of E. edge of post. Fd. Iron pipe on E. edge of post. Fd. R.R. Spk. 5" below surface 1' W. of E. edge of post. #74	17	Set R.R. Spk. 7-28-69	
S.E. cor. sec. 23 Milton Twp. Stone. S.R. #281 ✓ R.R. Spk. #75	18	Ties OK 7-28-69	✓ N.E. to shiner in P.P. 44.65 ✓ W.N.W. to shiner in P.P. 121.54 ✓ S.W. to shiner in T.P. 59.10 ✓ S.S.W. to shiner in T.P. 64.41 ✓ S.E. to shiner in T.P. 67.75
W. 1/4 of S.W. 1/4 sec. 24 Fd. stone in W. bank of Deb. Fd. Stone ✓ #75-A	18-A	High Point	✓ Shiner in P.P. E. 33.80 ✓ Shiner in T.P. W. 55.25

PERSONNEL	TITLE	PERSONNEL	TITLE

COUNTY Wood DATE Oct 12-19-57
 S. R. #69 WEATHER 4-14-60
 SEC. _____ TEMP. _____

DESCRIPTION	LEFT	CENTER LINE	RIGHT	JOB NO.
W. 1/4 post sec. 36 Milton Twp. Stone			Shiner T Pole E 21.02	
Did not find ✓ Found	#72	15	✓ Stone E. 30.0	
			✓ Stone W. 30.0	
N.W. Cor. sec. 36 Milton Twp. Stone 1.0' below surface of pavement. Set R.R. spike Boys Rd.	#73	16	Shiner P Pole S.W. 43.30	
			Shiner w chem E. 54.70	
			✓ Shi. in T. Pole S.E. 46.37	
			✓ Ditch marker leaning S.E. 42.75 42.75	
			✓ S.E. cor. E about, S.E. 40.60 40.45	
			✓ W. Cor. W about, S.W. 20.40 27.20	
			✓ Shiner in P.P. N.W. 34.50 26.40	
			Iron sign stake N.E. 60.00 22.20	
			✓ Shi. P.P. N.N.W. 78.5	
			" " N.N.E. 103.32	
W. 1/4 post sec. 25. E.R. opt. on a line N.W. & S.W. Cor. posts 10' W. of E. edge of post. Fd. Iron pipe on E. edge of post. Fd. R.R. Spk. 5" Below Surface 1' W. of E. Edge post.	#74	17	Corner Post E. 20.05	
			Anchor post E. 30.55	
			Busher post W. Sect. Gone 46.78	
			✓ T. Pole S.W. 46.20	
			✓ Conc. man. N.E. 23.63 23.73	
			✓ Conc. man. Spt E. 15.66 18.73	
			✓ Shi. P. Pole S.S.E. 109.30	
S.E. Cor. sec. 23 Milton Twp. Stone. ✓ R. E. Spk.	S.E. #281	18	✓ N.E. to shiner in P.P. 44.65	
	#75		✓ W.N.W. to shiner in P.P. 121.54	
			✓ S.W. to shiner in T.P. 59.70 59.65	
			✓ S.S.W. to shiner in T.P. 64.41	
			✓ S.E. to shiner in T.P. 67.75	
W. 1/4 of S.W. 1/4 sec. 24 Fd. Stone in W. bank of Dch. Fd. Stone ✓	#75-A	18-A	Shiner in P.P. E. 33.80' 34.0'	
			Shiner in T.P. W. 35.85' 36.0'	

PERSONNEL _____ TITLE _____ PERSONNEL _____ TITLE _____
 COUNTY Wood DATE OK 12-13-57
 _____ _____ _____ _____
 S. R. #69 WEATHER 4-14-60
 _____ _____ _____ _____
 SEC. _____ TEMP. _____

DESCRIPTION _____ LEFT _____ CENTER LINE _____ RIGHT _____ JOB NO. _____

DESCRIPTION	LEFT	CENTER LINE	RIGHT	JOB NO.
W. 1/4 post sec. 36 Milton Twp. Stone			Stone E. 30.0'	
Did not find ✓			Stone W. 30.0'	
	#72	15		
N.W. Cor. sec. 36 Milton Twp. Stone 1.0' below surface of pavement.			✓ Shi. in T. Pole S.E. 46.37	
Set R.R. spike Bays Rd.			✓ Ditch marker leaning S.E. 42.75' 42.95'	
	#73	16	✓ S.E. cor. E. abut. S.E. 40.50 40.45'	
			✓ W. cor. W. abut. S.W. 28.35 29.30'	
			✓ Shiner in P.P. N.W. 34.80' 36.16'	
			Iron sign stake N.E. Gone 32.80'	
			✓ Shi. P.P. N.N.W. 78.59'	
W. 1/4 post sec. 25. E.R. spk. on a line N.W. & S.W. Cor. posts 10' W. of E. edge of part. Fd. iron pipe on E. edge of part.			Fence Post E. 20.05'	
Fd. R.R. Spk. 5" Below Surface 1' W. of E. edge of part.			Anchor post E. 20.05'	
	#74	17	Anchor post W.S.W. Gone 36.78'	
			✓ T. Pole S.W. 46.20'	
			✓ Conc. man. N.E. 23.63 23.73'	
			✓ Conc. man. Spt E. 18.66 18.78'	
			✓ Shi. P. Pole S.S.E. 109.30'	
S.E. Cor. sec. 23 Milton Twp. Stone. S.R. #281			✓ N.E. to shiner in P.P. 44.65'	
✓ R.R. spk.			✓ W.N.W. to shiner in P.P. 121.54'	
	#75	18	✓ S.W. to shiner in T.P. 59.65'	
			✓ S.S.W. to shiner in T.P. 64.41'	
			✓ S.E. to shiner in T.P. 67.75'	
W. 1/4 of S.W. 1/4 sec. 24			High Point	
Fd. stone in W. bank of Dch.			✓ Shiner in P.P. E. 33.80' 34.0'	
Fd. Stone ✓			✓ Shiner in T.P. W. 35.85' 36.0'	
	#75-A	18-A		