

O.D.O.T. DISTRICT 2 SURVEY OFFICE (USE ONLY)

PERSONNEL

REFERENCE NO. 16

SHEET 16 OF 26

NOTES RHOADES

DATE 8-27-15

ROUTE SR 235

H.C. O'DONNELL

WEATHER SUNNY

COUNTY WOOD

R.C. RHOADES

TEMP. 52°F

TOWNSHIP MILTON

SECTION 35

DWG BY WHITAKER PID R/W STAKE

T 4 N R 9 E

TYPE MONUMENT P.K./WASHER

ON SURFACE - ~~BELOW~~ ON

OFFSET 0.5' LT : RT

8.1' TO RT EDGE PAVEMENT

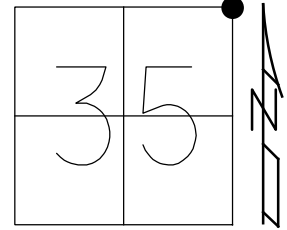
STATION: 372+43.52

HORIZ.DATUM: NAD83 2011

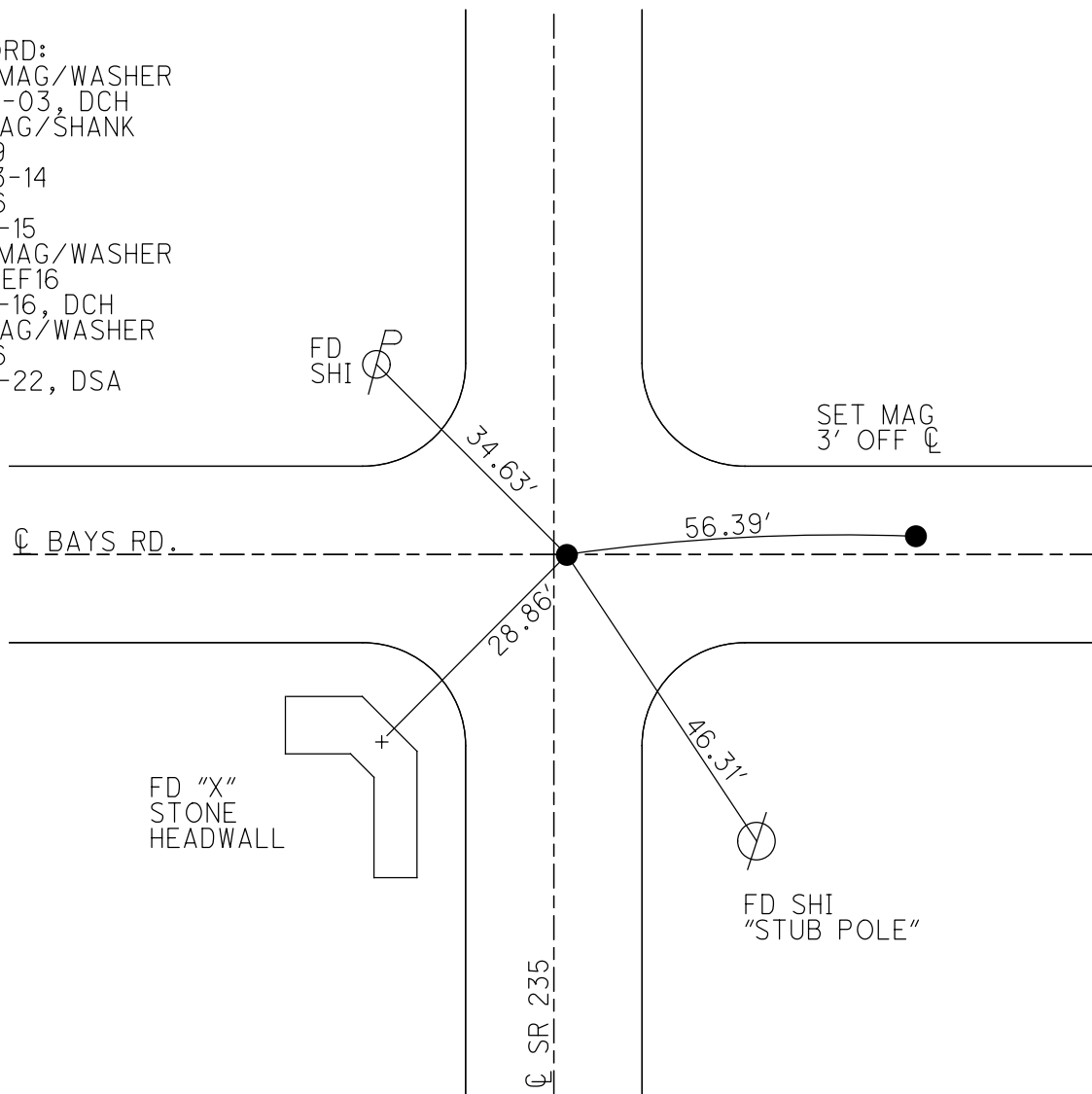
GEOID: NAVD88 2018

GRID: NORTHING: 586766.851

EASTING: 1615086.323



RECORD:  
 SET MAG/WASHER  
 10-10-03, DCH  
 FD MAG/SHANK  
 REF19  
 10-23-14  
 REF16  
 8-26-15  
 SET MAG/WASHER  
 NEWREF16  
 7-28-16, DCH  
 FD MAG/WASHER  
 REF16  
 4-29-22, DSA



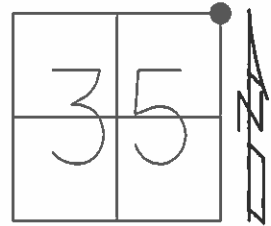
FD "X"  
 STONE  
 HEADWALL

FD SHI  
 "STUB POLE"

O.D.O.T. DISTRICT 2 SURVEY OFFICE (USE ONLY)

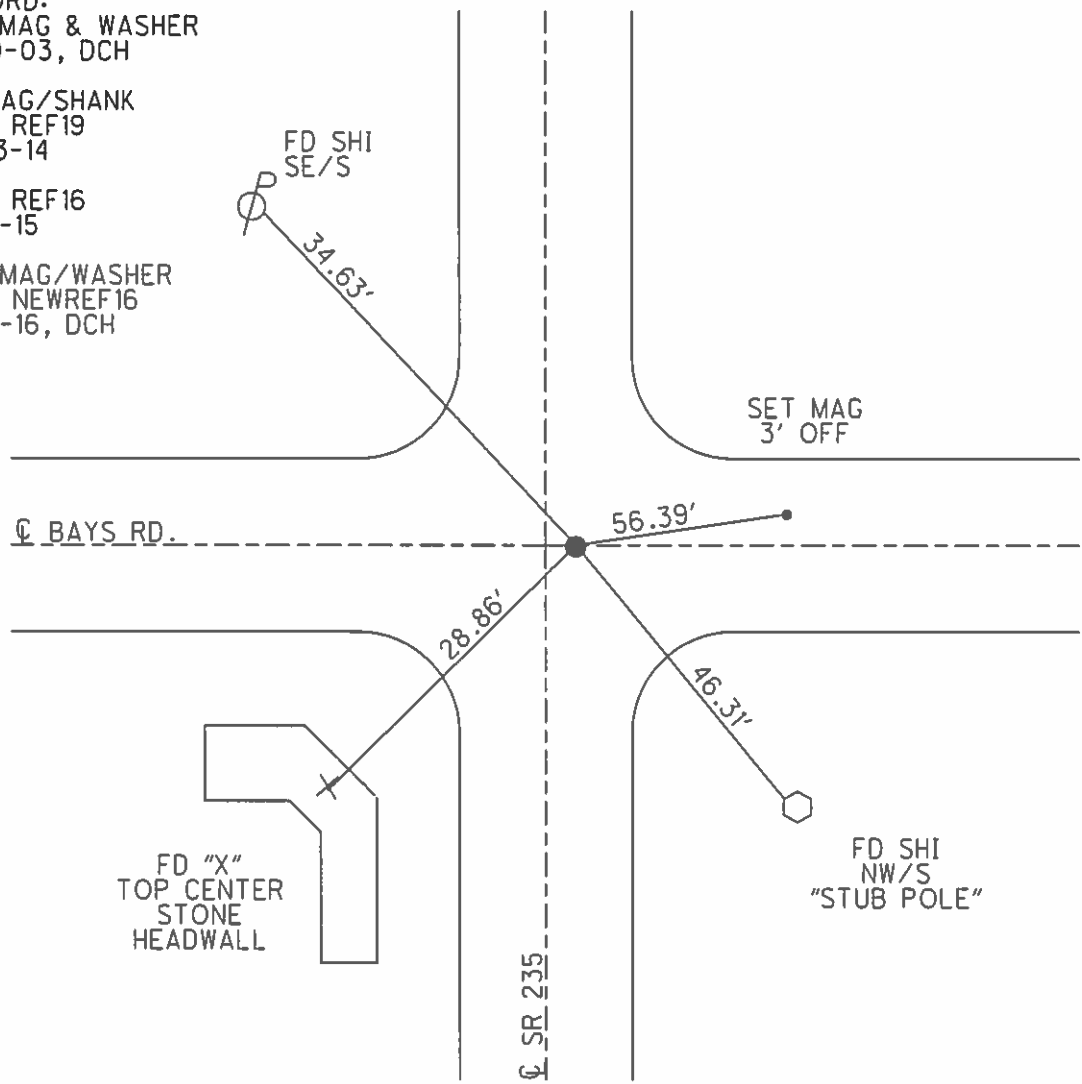
PERSONNEL \_\_\_\_\_ REFERENCE NO. 16 SHEET 16 OF 26  
 NOTES RHOADES DATE 8-27-15 ROUTE SR 235  
 H.C. O'DONNELL WEATHER SUNNY COUNTY WOOD  
 R.C. RHOADES TEMP. 62°F TOWNSHIP MILTON  
 SECTION 35  
 T 4 N R 9 E

TYPE MONUMENT PK/WASHER  
 ON SURFACE - ~~BELOW~~ ON \_\_\_\_\_  
~~LEFT~~ - Q PAV'T - RIGHT 0.5'  
8.1' TO RT EDGE PAVEMENT  
 S.L.M. 372+43.52



Grid: Northing: 586766.7989 Easting: 1615086.3623

- RECORD:
- SET MAG & WASHER  
10-10-03, DCH
- FD MAG/SHANK  
GPS, REF19  
10-23-14
- GPS, REF16  
8-26-15
- SET MAG/WASHER  
GPS, NEWREF16  
7-28-16, DCH



FD "X"  
TOP CENTER  
STONE  
HEADWALL

FD SHI  
NW/S  
"STUB POLE"

O.D.O.T. DISTRICT 2 SURVEY OFFICE

PERSONNEL

REFERENCE NO. 16

SHEET 13 OF 23

NOTES Homan

DATE 9-24-03

ROUTE 235

H.C. Nuhfer

WEATHER SUNNY

COUNTY WOOD

R.C. Ballmer

TEMP. 60°

TOWNSHIP MILTON

SECTION 35

T 4 N R 9 E

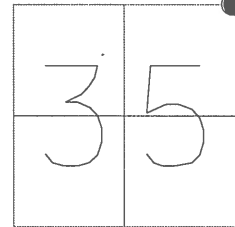
TYPE MONUMENT PK & Washer

ON SURFACE - BELOW on surface

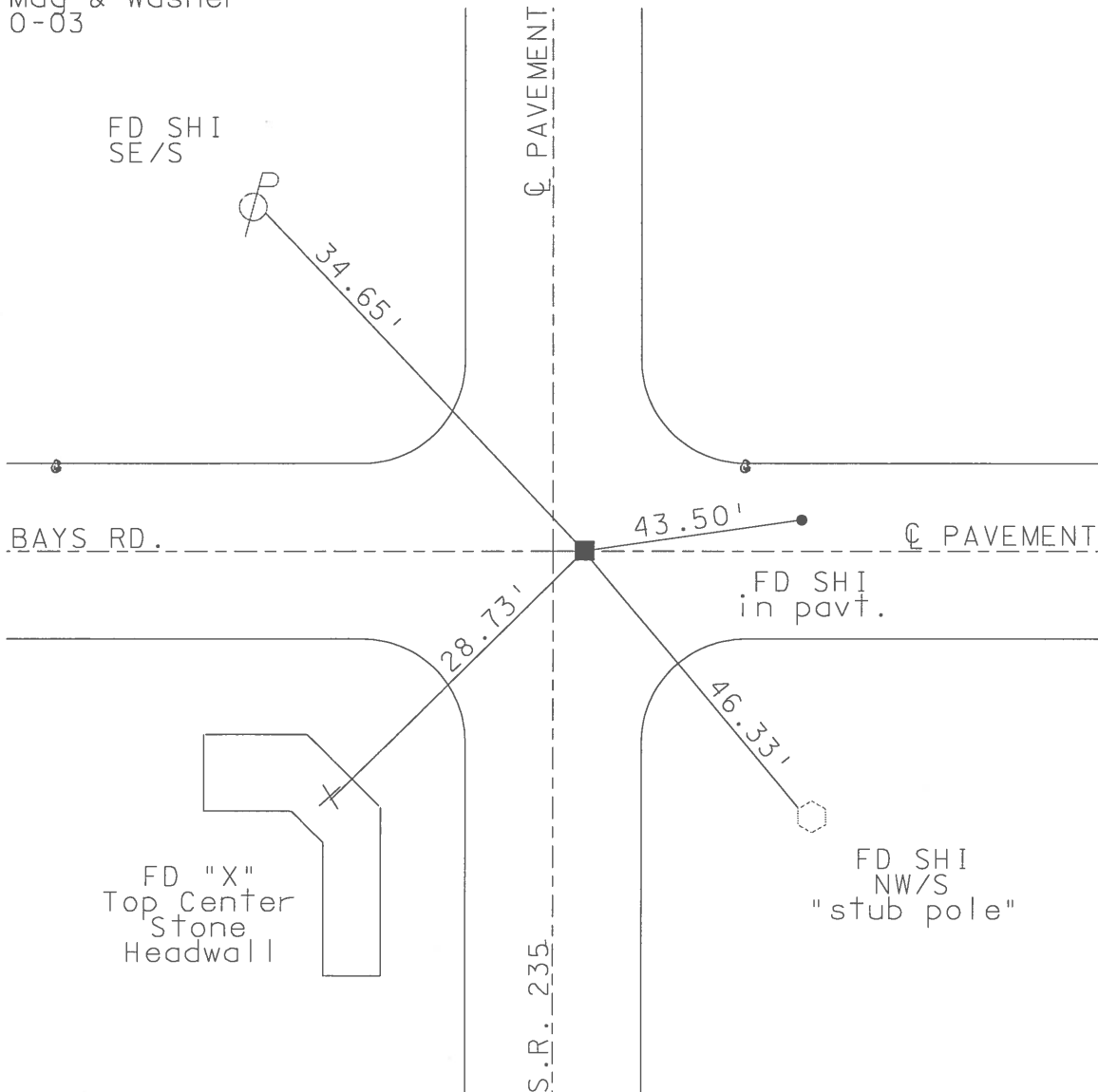
~~LEFT - C PAVT~~ - RIGHT 0,5'

8.1 TO RT EDGE PAVEMENT

S.L.M. 371+35 on C Bays Rd



Set Mag & Washer  
10-10-03  
DCH



# O.D.O.T. DISTRICT 2 SURVEY OFFICE

PERSONNEL

REFERENCE NO. 10

SHEET 12 OF 28

NOTES STEVE HUSS

H.C. KEVIN MOSER

R.C. STEVE HUSS

DATE 5-21-96

WEATHER Sunny

TEMP. +76°F

ROUTE S.R. 235

COUNTY WOOD

TOWNSHIP MILTON

SECTION 35

T4 N R 9 E

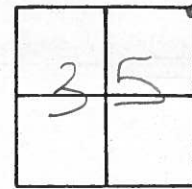
TYPE MONUMENT Sm. R.R. Spike

ON SURFACE - BELOW SURFACE

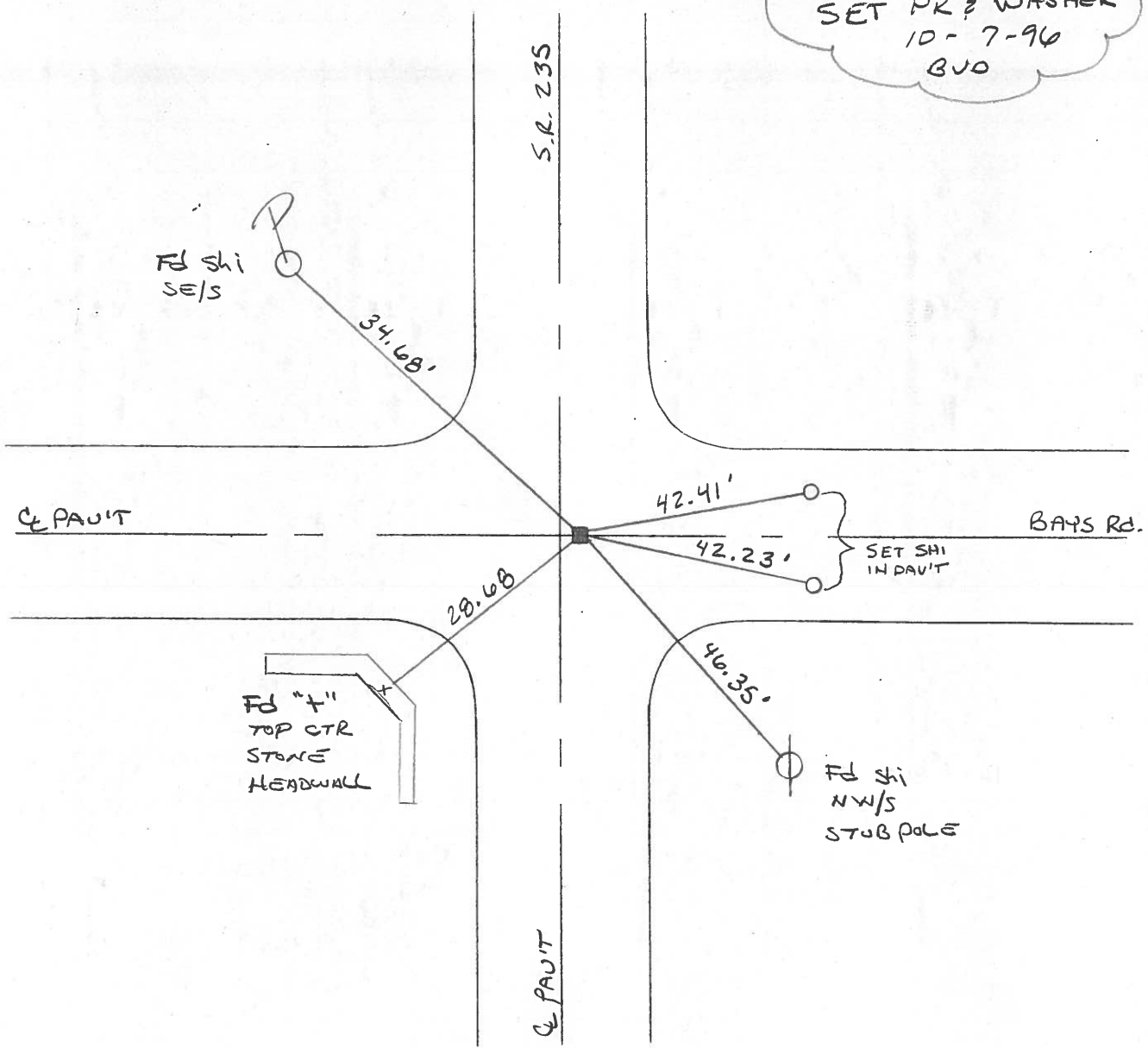
~~LEFT~~ PAV'T. - RIGHT 1'

B.I TO RT EDGE PAVEMENT

S.L.M. 371+35 ON 4 BAYS Rd.



SET PK & WASHER  
10-7-96  
BVO



# O.D.O.T. DISTRICT 2 SURVEY OFFICE

PERSONNEL \_\_\_\_\_

REFERENCE NO. 16

SHEET \_\_\_\_\_ OF \_\_\_\_\_

NOTES BARNHISEL

H.C. Loehrke

DATE 6-3-86

ROUTE 235

R.C. HOFFMAN

WEATHER SUNNY

COUNTY WOOD

TEMP. +65°

TOWNSHIP MILTON

SECTION 35

T4 N R 9 E

TYPE MONUMENT Sm RR Spk

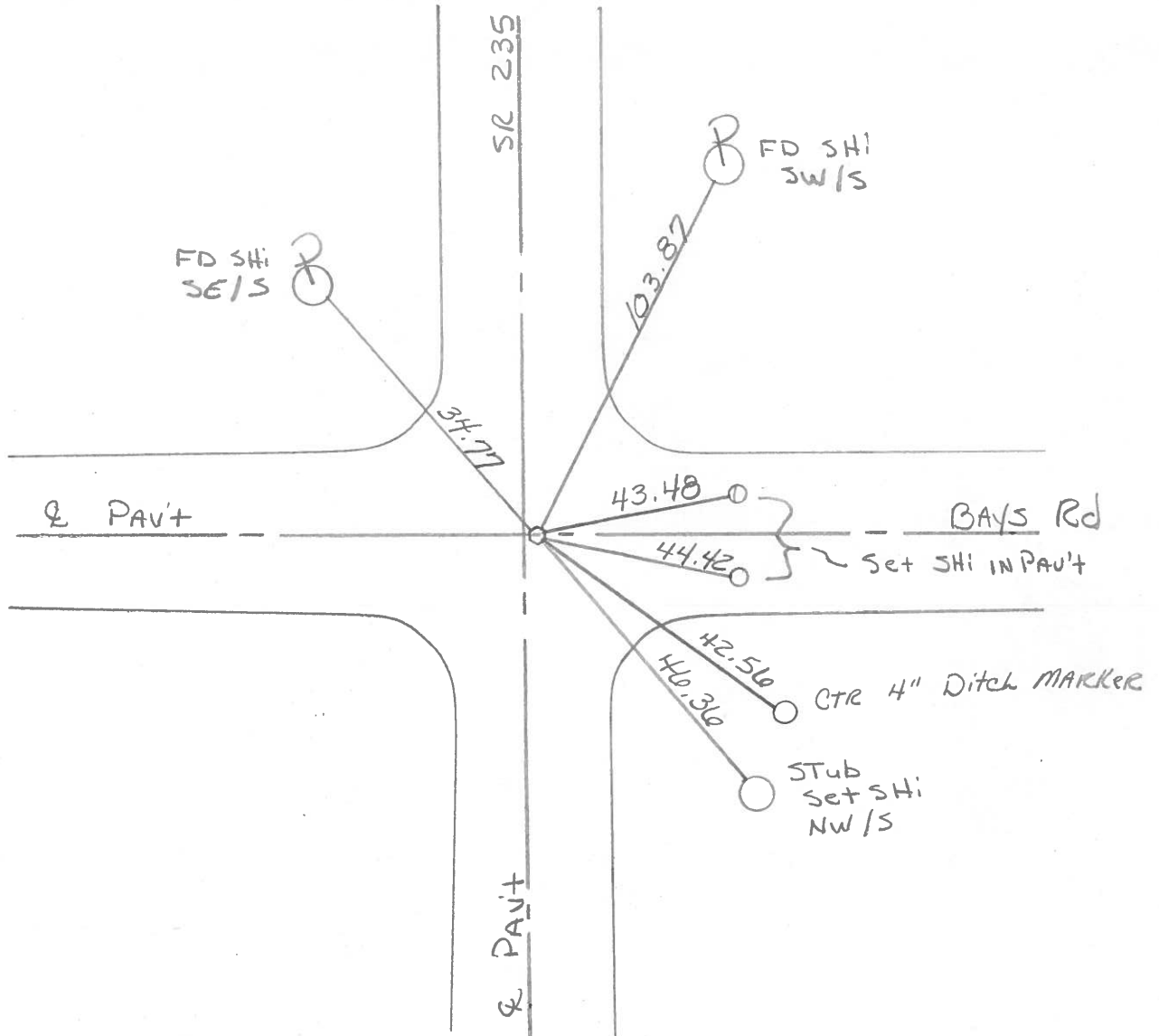
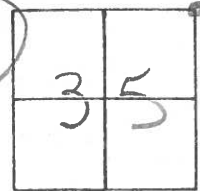
ON SURFACE - BELOW yes

LEFT - & PAV'T. - RIGHT .5'

- TO - EDGE PAVEMENT

S.L.M. 371 + 39 on & BAYS Rd

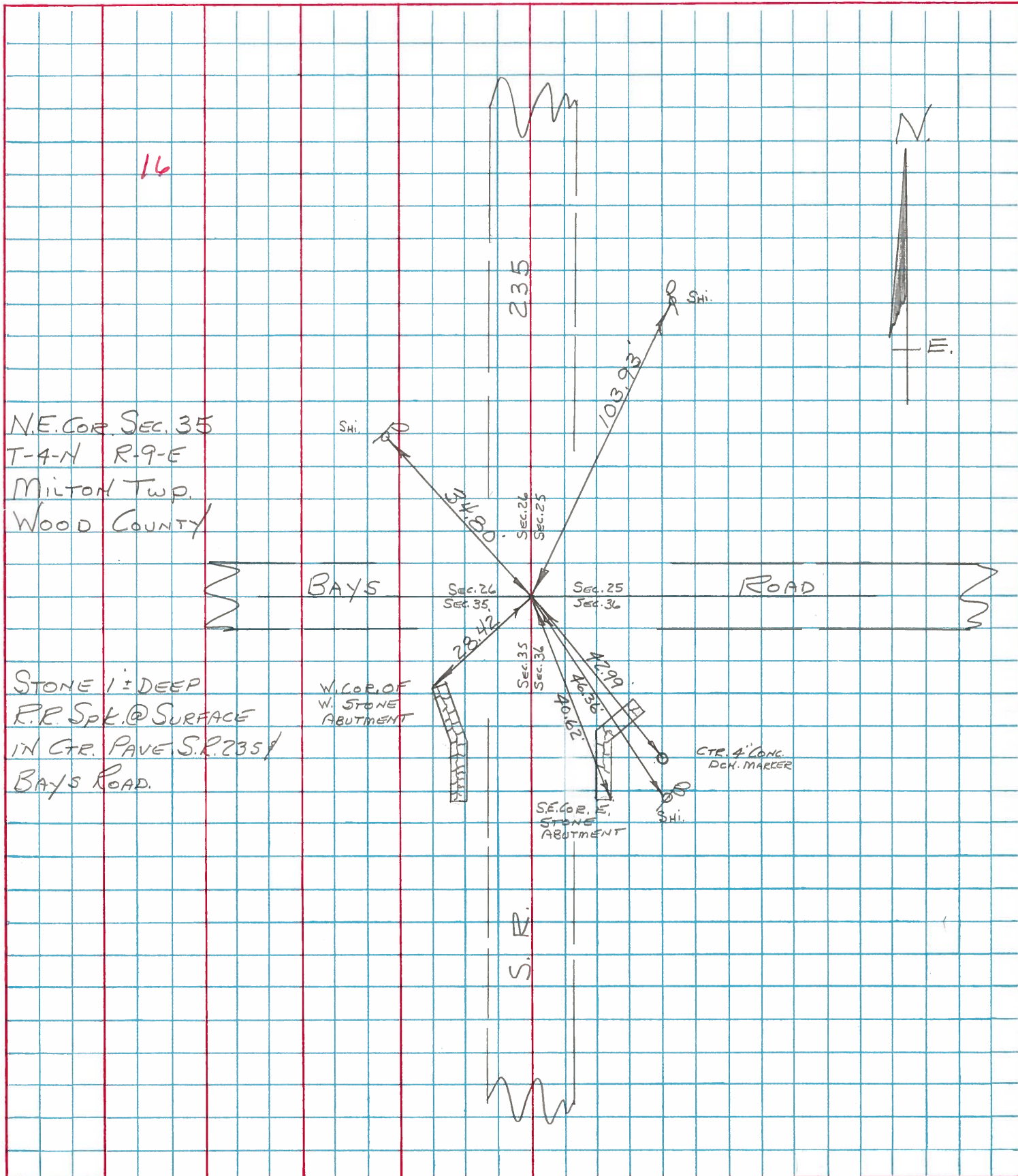
Set Sm RR Spk  
6-26-86  
MAB



PERSONNEL	TITLE	PERSONNEL	TITLE
BURNSIDE			
SMITH			
BOWERS			
MEAD			

COUNTY Wood DATE 1-5-76  
 S. R. 235 WEATHER CLEAR  
 SEC. N.E. COR. SEC. 35 BAYS RD. TEMP. +16°

DESCRIPTION CONTROL TIES JOB NO. \_\_\_\_\_  
 LEFT CENTER LINE RIGHT



PERSONNEL TITLE PERSONNEL TITLE COUNTY Wood DATE 7-69  
SILVESTER  
 S. R. #235 WEATHER \_\_\_\_\_  
 SEC. \_\_\_\_\_ TEMP. \_\_\_\_\_

DESCRIPTION LEFT CENTER LINE RIGHT JOB NO.

DESCRIPTION	LEFT	CENTER LINE	RIGHT	JOB NO.
# 73 N.W. Cor. Sec 36 Milton Twp Set R.R. Spk. Days Rd.	#16	Stone 1' below Surface	Shiner in T. Pole SE, 46.37	
			Ditch Marked (leaning) S.E. 42.75	
			SE. Cor. E. Abut. SE. 40.60	
# 74 W. 1/4 Post Sec 25 Milton Twp. RR. Spk on a line N.W. & S.W. Cor. Posts 10' W. of E. edge of Pavmt. Found Iron Pipe on E. Edge of Pavmt. F/R.R. Spk. 5" below Surface 1' W. of E. Edge Pavmt.	#17		W. Cor. W " S.W. 28.40	
			Shiner in P. Pole N.W. 34.80	
			" " " " N.N.W. 78.59	
# 75 S.E. Cor Sec. 23 Milton Twp. Stone R.R. Spk. S.R. 281.	#18		" " " " N.N.E. 103.92	
			T. Pole S.W. 46.20	
			Conc. Mon N.E. 23.63	
			" " S. of E. 18.66	
			Shiner in P. Pole S.S.E. 109.30	
			N.E. to Shiner in P. Pole 44.65	
			S.W. " " " T. " 59.70	
			S.S.W. " " " " " 64.41	
			S.E. " " " " " 67.75	

PERSONNEL TITLE PERSONNEL TITLE

COUNTY Wood.

DATE March, 26, 1968

S. R. #69

WEATHER Cloudy, Showers

SEC. \_\_\_\_\_

TEMP. + 40°

DESCRIPTION Ties to Control Points.

JOB NO. \_\_\_\_\_

LEFT

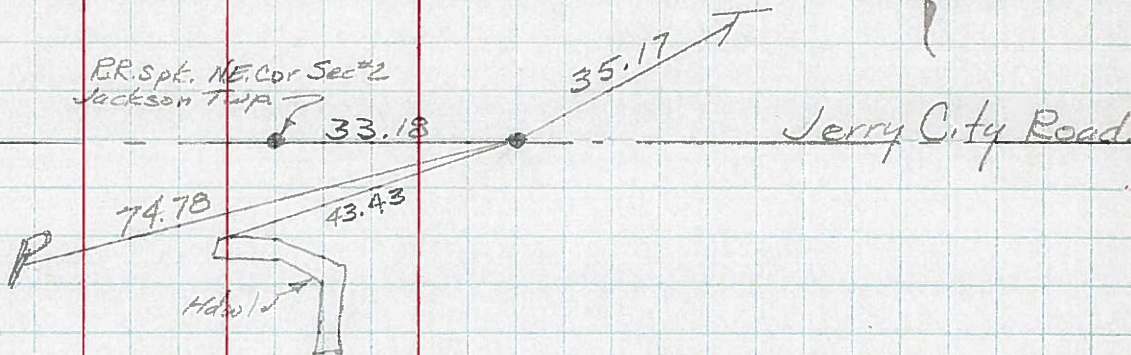
CENTER LINE

RIGHT

Iron pin  
SW. cor., Sec. #36  
Milton Twp.  
T.4N - R.9E.

14

P.R. spt. NE. Cor Sec #2  
Jackson Twp



E/4 of S.E. 1/4  
80 Rods N. of Spt. 1/4  
Sec. #36 Milton Twp.  
T.4N - R.9E

Iron Pin  
Post

33.08

48.22

Shiner



W 1/4 of Sec. #36  
Milton Twp.  
T.4N - R.9E.

Stone 30' West

43.30

21.02

Shiner

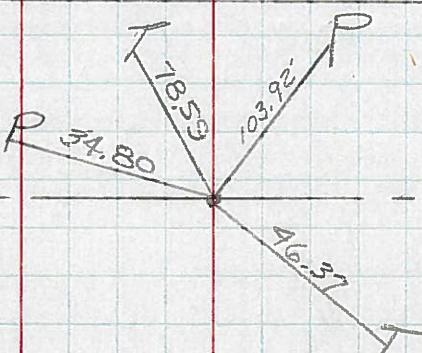
stone 30' East

54.70

18" Wild Cherry



N.W. Cor Sec. #36  
Milton Twp.  
T.4N - R.9E.



Bays Road



16



PERSONNEL	TITLE	PERSONNEL	TITLE

COUNTY Wood DATE Oct 12-13-57  
 S. R. #69 WEATHER 4-14-60  
 SEC. \_\_\_\_\_ TEMP \_\_\_\_\_

DESCRIPTION \_\_\_\_\_ LEFT \_\_\_\_\_ CENTER LINE \_\_\_\_\_ RIGHT \_\_\_\_\_ JOB NO. \_\_\_\_\_

W. 1/4 part sec. 36 Milton  
 Twp. Stone *Set Small Spk. 7-28-69*  
 Did not find ✓  
 #72 15

Shi. T. Pole E 21.02  
 Stone E 30.0  
 Stone W 30.0  
 Shi. P. Pole SW 43.30  
 Shi. Wild Cherry E 54.70

N.W. Cor. sec. 36 Milton  
 Twp. Stone 10' below  
 surface of pavement.  
 Set R.R. spike Baye Rd.

*Set P.P. Spk. 7-28-69*  
 Shi. in T. Pole S.E. 46.37  
 Ditch marker leaning S.E. 42.75  
 S.E. Cor. E. about S.E. 40.50  
 W. Cor. W. about S.W. 28.35  
 Shiner in P.P. N.W. 34.80  
 Iron sign stake N.E. Gone 33.78

#73 16

Shi. P.P. N.N.W. 78.5  
 Shi. P. Pole N.N.E. 103.92

W. 1/4 part sec. 25.  
 E. P. P. line N.W. 1/4  
 S.W. Cor. parts 10' W. of E.  
 edge of part. Fd. from pipe  
 on E. edge of part.

*Set R.R. Spk. 7-28-69*  
~~Fence post E 20.00~~  
~~Anchor post E 20.25~~  
~~Marker post (Set) Gone 31.75~~  
 T. Pole S.W. 46.20  
 Conc. mon. N.E. 23.43 23.75  
 Conc. mon. Sp E 15.26 13.78  
 Shi. P. Pole S.S.E. 109.30

#74 *Edg = parts* 17

S.E. Cor. sec. 23 Milton  
 Twp. Stone S.R. #281  
 R.R. spk.

*Ties ok 7-28-69*  
 N.E. to shiner in P.P. 44.60  
 W.N.W. to shiner in P.P. 121.54  
 S.W. to shiner in T.P. 59.10  
 S.S.W. to shiner in T.P. 64.41  
 S.E. to shiner in T.P. 67.70

#75 18

W. 1/4 of S.W. 1/4 sec. 24  
 Fd. stone in W. bank of Dch.  
 Fd. Stone ✓

*High Point*  
 Shiner in P.P. E. 33.20' 34.00  
 Shiner in T.P. W. 55.25' 36.00

#75-A 18-A

PERSONNEL	TITLE	PERSONNEL	TITLE

COUNTY Wood DATE 12-12-57  
 S. R. #69 WEATHER 4-14-60  
 SEC. \_\_\_\_\_ TEMP. \_\_\_\_\_

DESCRIPTION LEFT CENTER LINE RIGHT JOB NO.

W. 1/4 post sec. 36 Milton Twp. Stone Did not find ✓ Found #72 <b>15</b>	Shiner T Pole E 21.02 ✓ Stone E. 30.0 ✓ Stone W. 30.0 Shiner P Pole S.W. 43.30 Shiner w chert E. 54.70 ✓ Shi. in T. Pole S.E. 46.37 ✓ Ditch marker leaning S.E. 42.75 42.75 ✓ S.E. cor. E. cut, S.E. 40.60 40.45 ✓ W. Cor. W. cut, S.W. 20.40 20.20 ✓ Shiner in P.P. N.W. 34.50 36.76 Iron sign stake N.E. 60.00 32.00 ✓ Shi. P.P. N.N.W. 78.5 " " N.N.E. 103.32		
N.W. Cor. sec. 36 Milton Twp. Stone 10' below surface of pavement. Set R.R. spike Bays Rd. #73 <b>16</b>	<del>Post East E. 20.55</del> <del>marker post E. 30.55</del> <del>Busher post (W. cut, gone) 46.72</del> ✓ T. Pole S.W. 46.20 ✓ Conc. man. N.E. 23.63 23.73 ✓ Conc. man. Spt E, 19.66 18.73 ✓ Shi. P. Pole S.S.E. 109.30		
W. 1/4 post sec. 25. E. R. optional line N.W. & S.W. Cor. posts 10' W. of E. edge of post. Fd. iron pipe on E. edge of post. Fd. R.R. Spt. 5" Below Surface 1' W. of E. Edge post #74 <b>17</b>	✓ N.E. to shiner in P.P. 44.62 ✓ W.N.W. to shiner in P.P. 121.54 ✓ S.W. to shiner in T.P. 59.70 59.65 ✓ S.S.W. to shiner in T.P. 64.41 ✓ S.E. to shiner in T.P. 67.74		
S.E. Cor. sec. 23 Milton Twp. Stone. <u>S.E. #281</u> ✓ R.R. spk. #75 <b>18</b>			
W. 1/4 of S.W. 1/4 sec. 24 Fd. Stone in W. bank of Del. Fd. Stone ✓ #75-A <b>18-A</b>	✓ Shiner in P.P. E, 33.80' 34.0' ✓ Shiner in T.P. W. 35.85' 36.0'		

PERSONNEL TITLE PERSONNEL TITLE

COUNTY Wood DATE 01-12-13-57

S. R. #69 WEATHER 4-14-60

SEC. \_\_\_\_\_ TEMP. \_\_\_\_\_

DESCRIPTION LEFT CENTER LINE RIGHT JOB NO.

W. 1/4 post sec. 36 Milton  
Twp. Stone  
Did not find ✓

Stone E. 30.0  
Stone W. 30.0

#72 15

N.W. Cor. sec. 36 Milton  
Twp. Stone 1.0' below  
surface of pavement.  
Set R.R. spike Bays Rd.

✓ Shi. in T. Pole S.E. 46.37  
✓ Ditch marker leaning S.E. 42.75' 42.95  
✓ S.E. Cor. E. abut. S.E. 40.50 40.45  
✓ W. Cor. W. abut. S.W. 28.35 29.30  
✓ Shiner in P.P. N.W. 34.80 36.16  
~~Iron sign stake N.E. Gone 32.80~~  
✓ Shi. P.P. N.N.W. 78.5'

#73 16

W. 1/4 post sec. 25.  
E.P. spk. on a line N.W. &  
S.W. Cor. posts 10' W. of E.  
edge of pavt. Fd. iron pipe  
on E. edge of pavt.  
Fd. R.R. Spk. 5" Below Surface 1' W. of E.  
Edge = part.

~~Fence Post E. 20.05~~  
~~Anchor post E. 20.05~~  
~~Anchor post W. S.W. Gone 36.78~~  
✓ T. Pole S.W. 46.20'  
✓ Conc. mon. N.E. 23.63 23.73  
✓ Conc. mon. Spt E. 18.66 18.78'  
✓ Shi. P. Pole S.S.E. 109.30'

#74 17

S.E. Cor. Sec. 23 Milton  
Twp. Stone. S.R. #281  
✓ R.R. spk.

✓ N.E. to shiner in P.P. 44.65  
✓ W.N.W. to shiner in P.P. 121.54  
✓ S.W. to shiner in T.P. 59.65'  
✓ S.S.W. to shiner in T.P. 64.41'  
✓ S.E. to shiner in T.P. 67.75

#75 18

W. 1/4 of S.W. 1/4 sec. 24  
Fd. stone in W. bank of Del.  
Fd. Stone ✓

✓ Shiner in P.P. E. <sup>High Point</sup> 33.80' 34.0'  
✓ Shiner in T.P. W. 35.85' 36.0'

#75-A 18-A