

O.D.O.T. DISTRICT 2 SURVEY OFFICE (USE ONLY)

PERSONNEL _____ REFERENCE NO. 20 SHEET 23 OF 26

NOTES RHOADES DATE 8-26-15 ROUTE SR 235
 H.C. O'DONNELL WEATHER CLOUDY COUNTY WOOD
 R.C. RHOADES TEMP. 65°F TOWNSHIP MILTON
 _____ SECTION 23
 _____ T 4 N R 9 E

TYPE MONUMENT P.K./WASHER

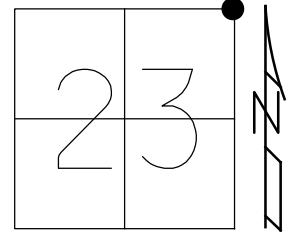
ON SURFACE - ~~BELOW~~ ON

~~LEFT -~~ Q PAV'T - RIGHT 11.9'

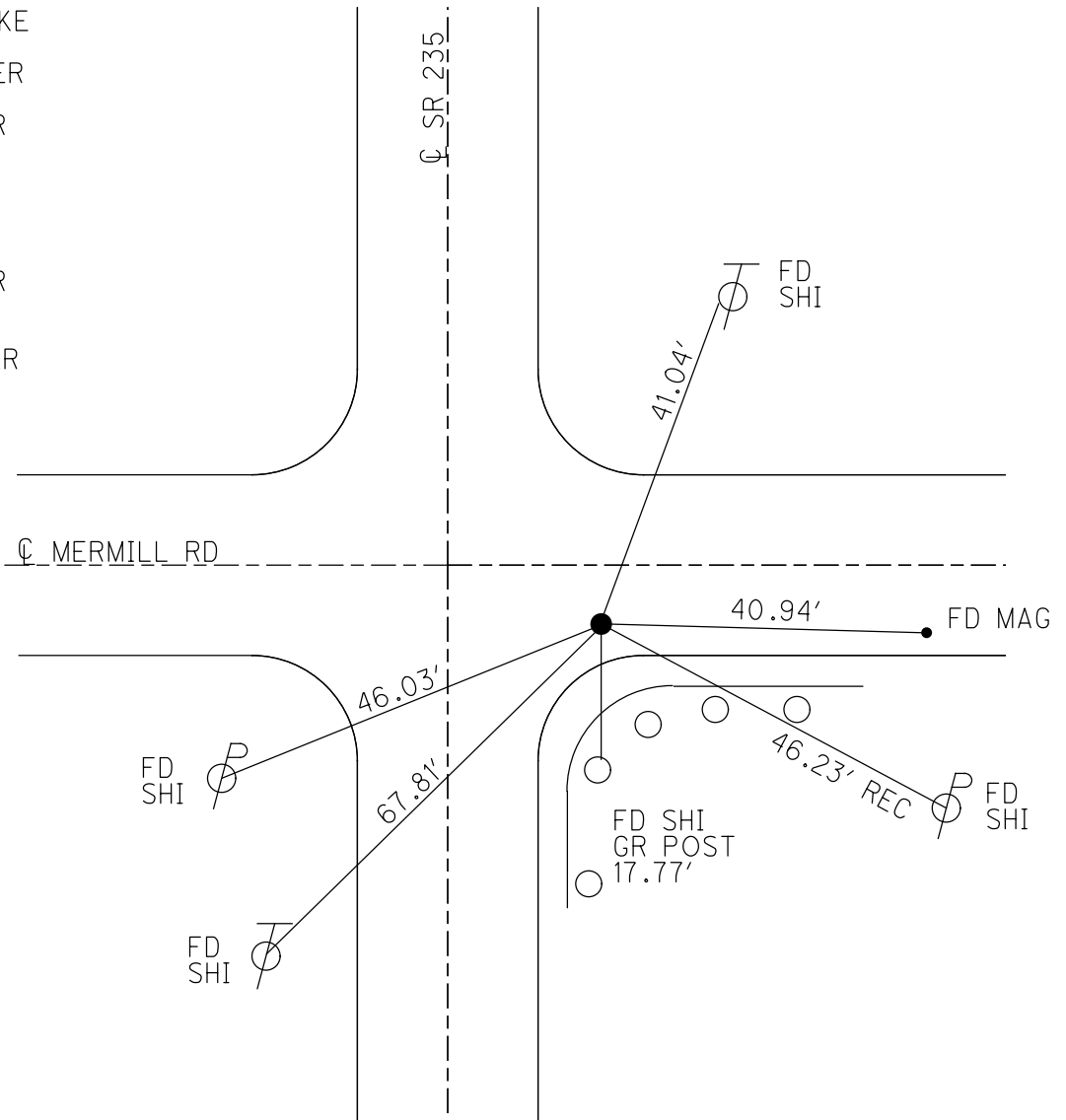
3.0' TO RT EDGE PAVEMENT

S.L.M. 478+63.62

Grid: Northing: 597385.990 Easting: 1615179.270



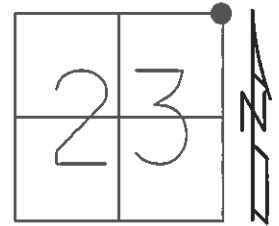
RECORD:
 SET SM.R.R.SPIKE
 6-27-86, MDB
 SET P.K./WASHER
 10-7-96, BVD
 FD P.K./WASHER
 2003
 FD R.R.SPIKE
 1" DOWN
 REF24
 10-23-14, EBW
 FD P.K./WASHER
 REF20
 8-26-15, JFO
 SET MAG/WASHER
 NEWREF20
 7-28-16, DCH
 REF20
 9/21/17, JFO
 5/11/18, JFO



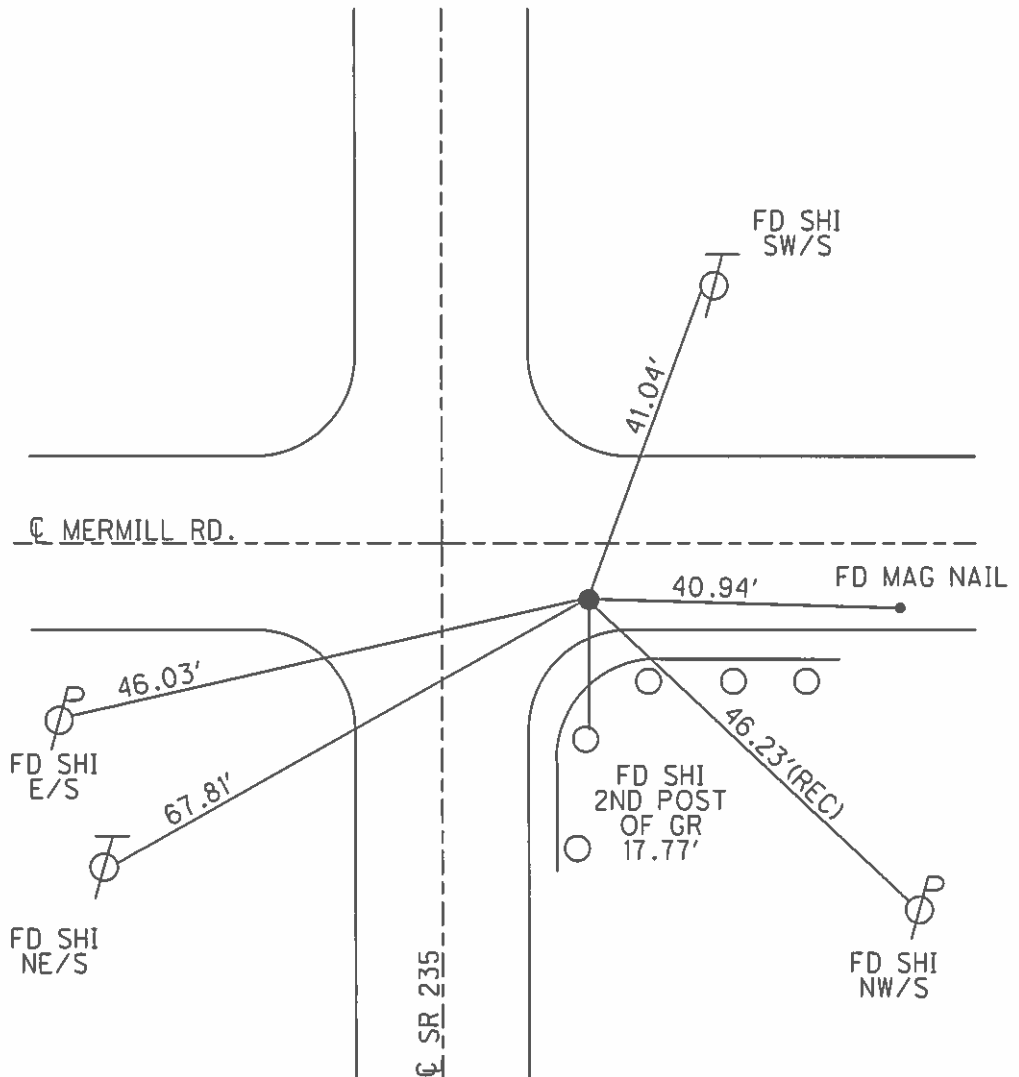
O.D.O.T. DISTRICT 2 SURVEY OFFICE (USE ONLY)

PERSONNEL _____ REFERENCE NO. 20 SHEET 23 OF 26
 NOTES RHOADES DATE 8-26-15 ROUTE SR 235
 H.C. O'DONNELL WEATHER CLOUDY COUNTY WOOD
 R.C. RHOADES TEMP. 65°F TOWNSHIP MILTON
 SECTION 23
 T 4 N R 9 E

TYPE MONUMENT PK/WASHER
 ON SURFACE - ~~BELOW~~ ON
~~LEFT~~ - CL PAV'T - RIGHT 11.9'
3.0' TO RT EDGE PAVEMENT
 S.L.M. 478+63.62
 Grid: Northing: 597386.0377 Easting: 1615179.3157



RECORD:
 SET SM RR SPK
 6-27-86, MDB
 SET PK/WASHER
 10-7-96, BVD
 POINT NOT
 DISTURBED 2003
 FD RSPK
 1" DOWN
 GPS, REF24
 10-23-14
 GPS, REF20
 8-26-15
 SET MAG/WASHER
 GPS, NEWREF20
 7-28-16, DCH



O.D.O.T. DISTRICT 2 SURVEY OFFICE

PERSONNEL

REFERENCE NO. 20

SHEET 20 OF 23

NOTES Homan
 H.C. Nuhfer
 R.C. Ballmer

DATE 9-25-03
 WEATHER Sunny
 TEMP. 60°

ROUTE 235
 COUNTY WOOD
 TOWNSHIP MILTON
 SECTION 23
T 4 N R 9 E

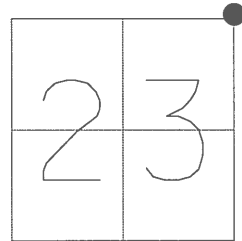
TYPE MONUMENT PK & Washer

ON SURFACE - BELOW on surface

~~LEFT~~ - ☉ PAV'T - RIGHT 11.9'

3.0 TO RT EDGE PAVEMENT

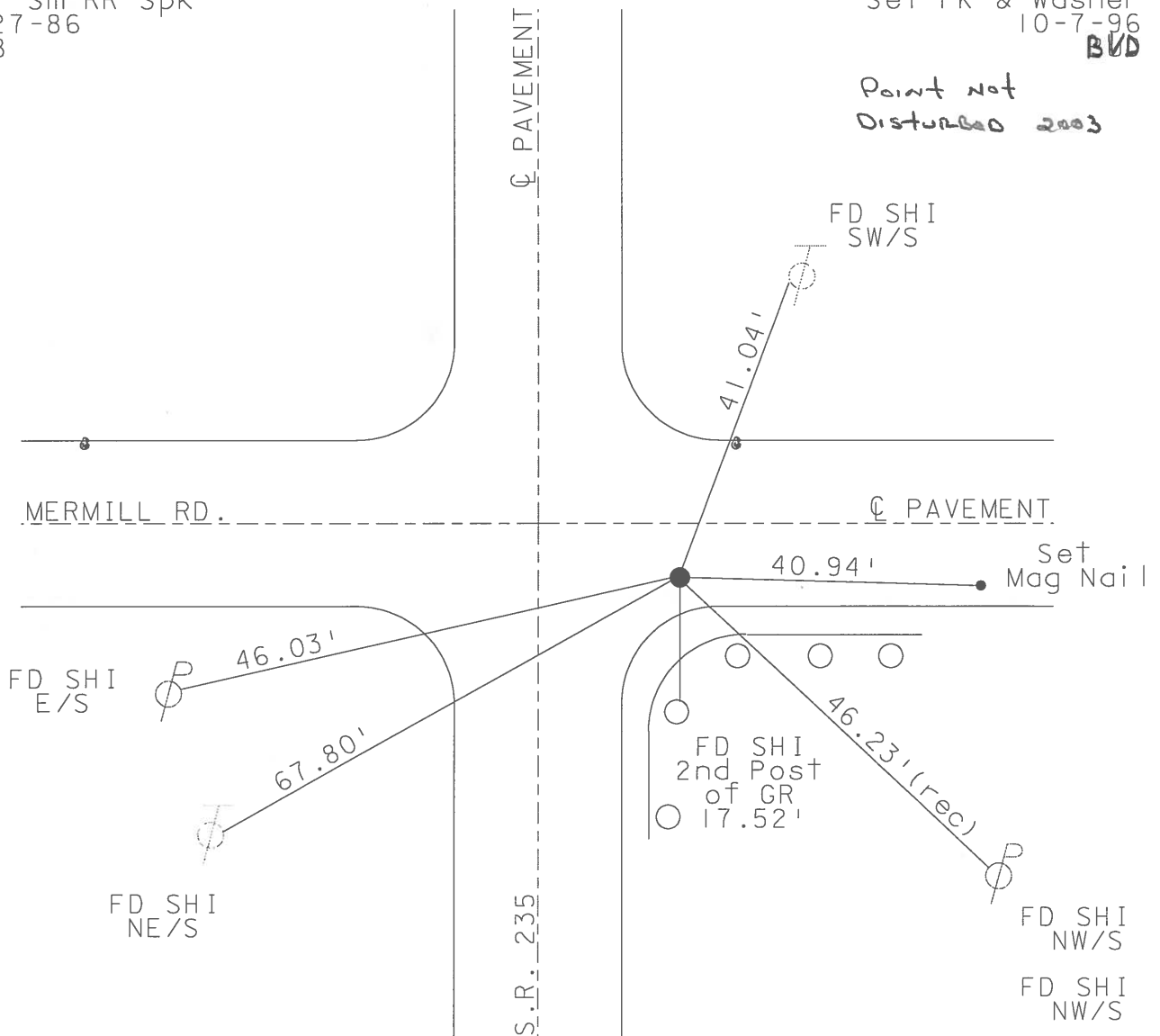
S.L.M. 477+69 (6.0" S of ☉ Mermill Rd)



Set Sm RR Spk
 6-27-86
 MDB

Set PK & Washer
 10-7-96
BVD

Point not
 Disturbed 2003



O.D.O.T. DISTRICT 2 SURVEY OFFICE

PERSONNEL

REFERENCE NO. 20

SHEET 19 OF 28

NOTES Van Dusen

H.C. Moser

R.C. Stiffler

DATE 7-30-96

WEATHER Cloudy

TEMP. +70°F

ROUTE 235

COUNTY Wood

TOWNSHIP Milton

SECTION 23

T 4 N R 9 E

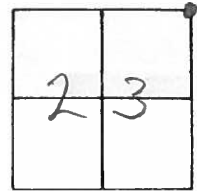
TYPE MONUMENT Sm. RR Spk

ON SURFACE - ~~BELOW~~ on surface

~~11.9'~~ - 11.9'

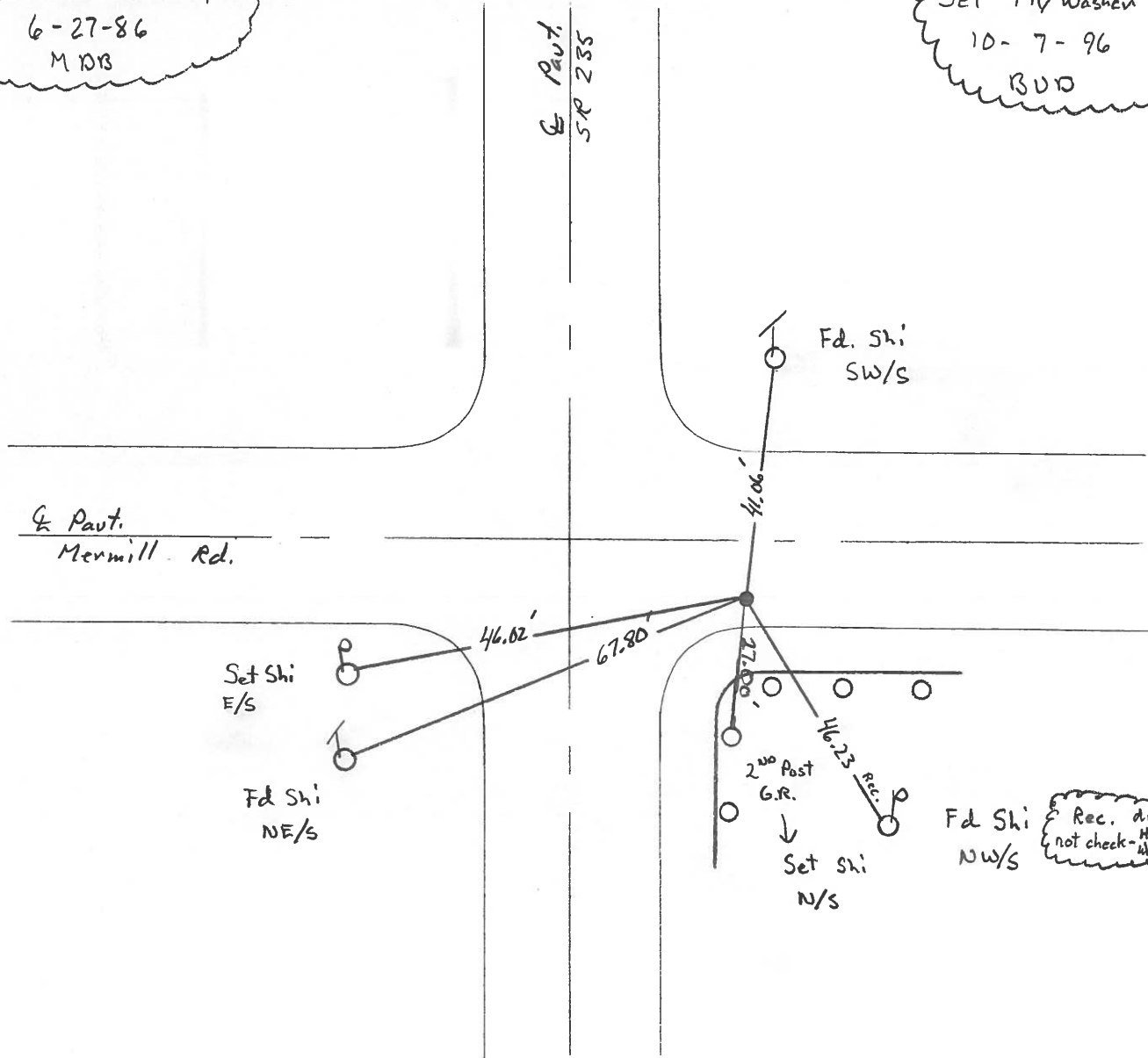
3.0 TO Rt. EDGE PAVEMENT

S.L.M. 2177 + 69 (6.0' S of E Mermill Rd.)



Set Sm. RR, Spk
6-27-86
M.D.B.

Set PK/Washer
10-7-96
B.D.D.



O.D.O.T. DISTRICT 2 SURVEY OFFICE

PERSONNEL _____

REFERENCE NO. 20

SHEET _____ OF _____

NOTES BARNHSEW

H.C. Loehrke

R.C. HOFFMAN

DATE 6-9-86

WEATHER SUNNY

TEMP. + 65°

ROUTE 235

COUNTY WOOD

TOWNSHIP MILTON

SECTION 23

T 4 N R 9 E

TYPE MONUMENT Sm RR Spk

ON SURFACE - BELOW yes

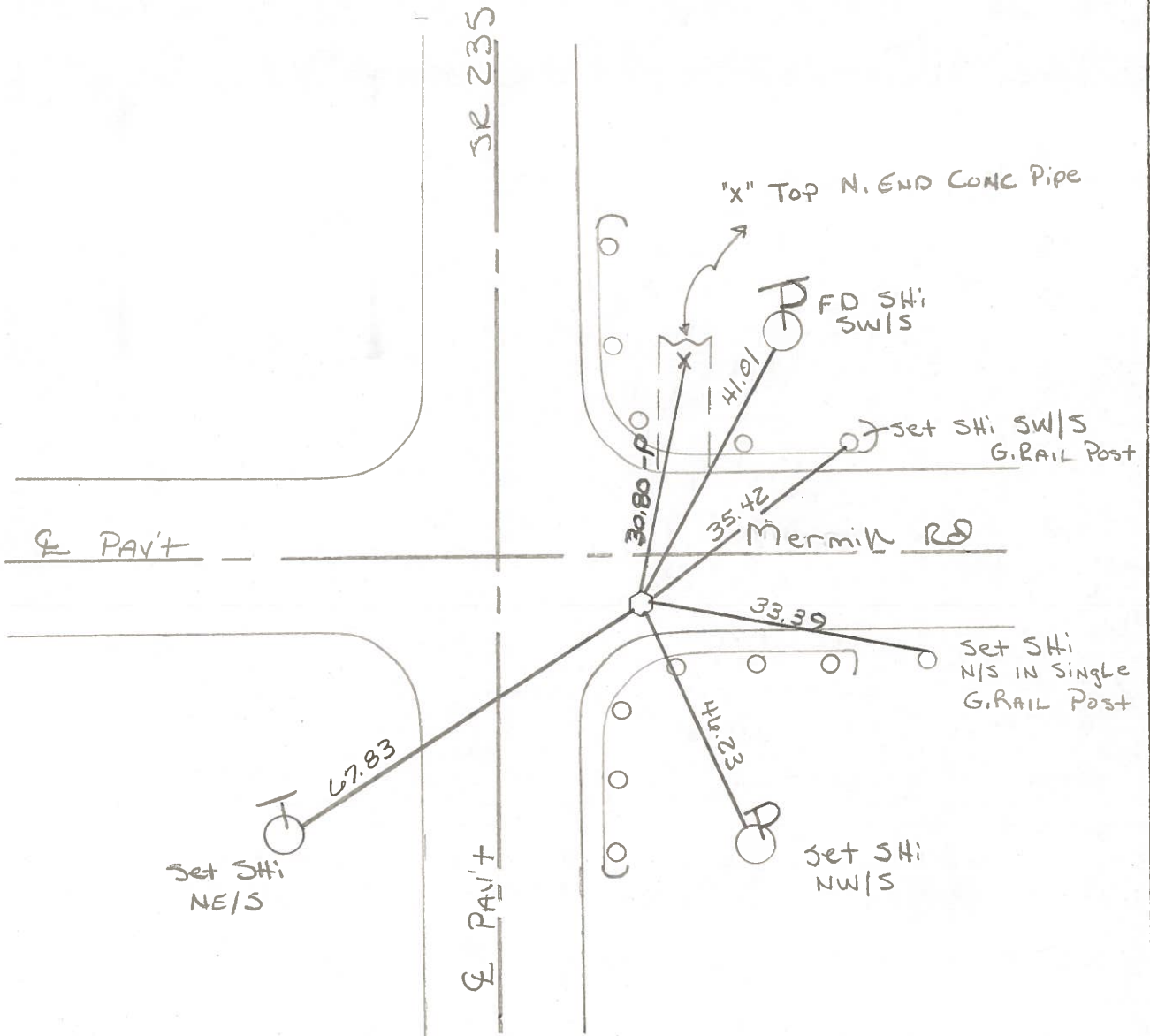
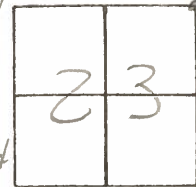
LEFT - Q PAV'T. - RIGHT 11.8

3.0 RT RT EDGE PAVEMENT

S.L.M. 477+75

6.0' S of E. Mermill Rd

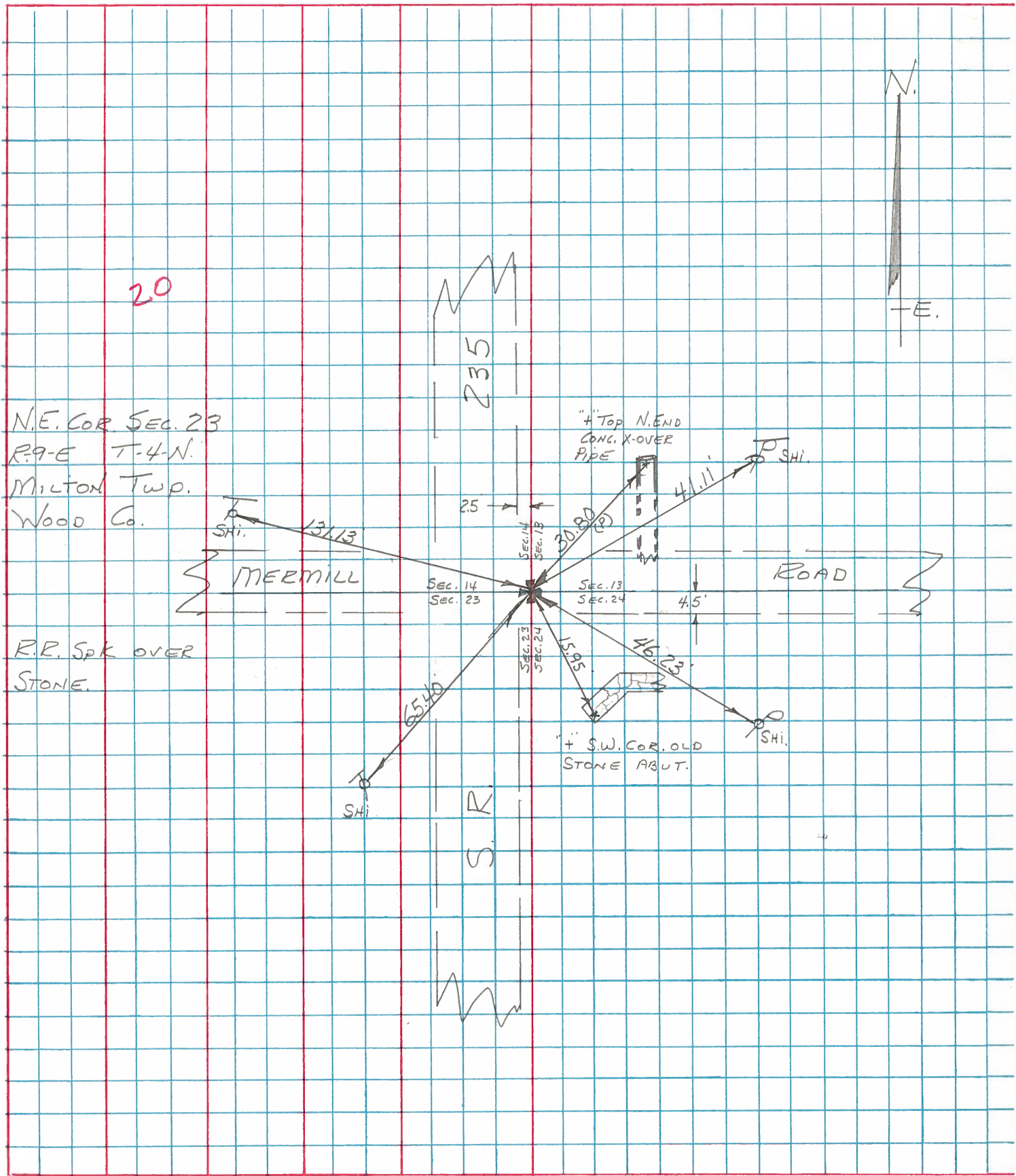
Set Sm RR Spk
6-27-86
MOB



PERSONNEL TITLE PERSONNEL TITLE
 BURNSIDE _____
 SMITH _____
 BOWERS _____
 MEAD _____

COUNTY Wood DATE 4-20-76
 S. R. 235 WEATHER Pt. Cloudy
 SEC. MERMILL ROAD TEMP. +60°

DESCRIPTION REF. TO SECTION CORNERS LEFT CENTER LINE RIGHT JOB NO.



RE-COPIED
7-29-71

PERSONNEL TITLE PERSONNEL TITLE

COUNTY WOOD DATE _____

S. R. 235 (OLD S.R. 69) WEATHER _____

SEC. _____ TEMP. _____

DESCRIPTION LEFT CENTER LINE RIGHT JOB NO. _____

DESCRIPTION	LEFT	CENTER LINE	RIGHT	JOB NO.
✓ N.W. 1/4 SEC. 24. STONE 10.9' E OF EDGE PAVE. & W. BANK DCH.	#76	#19	SHINER IN END POST OF FENCE 37.13'	
	#76-A		IRON PIPE W. 30.30'	T.P. N. of W. 69.35'
✓ N.W. COR. SEC. 24 MILTON Twp. MERMILL ROAD	#77	#20	SHINER IN 24" MAPLE N.W. 57.00'	
	#78		SHINER IN T. POLE S.W. 51.25'	
	#79		SHINER IN T. POLE N.E. 35.80'	
	#80		X' IN S.W. COR. S. ABUT. SE. (OLD) 15.93'	
E. 1/4 Post SEC. 14 MILTON Twp. STONE 8" BELOW SURFACE & 6' W. & E. EDGE PAVE.	#81	#21	IRON ROD W. 30.25'	
	#82		SHINER IN T. POLE N.N.E. 40.09'	
	#83		SHINER IN T. POLE S.E. 35.66'	
N.E. COR. SEC. 14 MILTON Twp. STONE 0.6' DEEP R.R. SPK. MAPLEWOOD ROAD	#84	#22	N. COR. N. Wing of W. ABUT. S of W. 13.90'	
	#85		N. COR. N. Wing of E. ABUT. S of E. 14.13'	
	#86		SHINER IN P. POLE S.W. 35.03'	
	#87		SHINER IN T. POLE S.E. 34.17'	
	#88		SHINER IN T. POLE E. 61.34'	

PERSONNEL	TITLE	PERSONNEL	TITLE

COUNTY Wood DATE OK 12-13-57
 S. R. #69 WEATHER 4-15-60
 SEC. _____ TEMP. 1-20-66

DESCRIPTION _____ LEFT _____ CENTER LINE _____ RIGHT _____ JOB NO. _____

DESCRIPTION	LEFT	CENTER LINE	RIGHT	JOB NO.
	#76		✓ Shiner in End Post of fence 37.13 ✓ Iron pipe W. 30.30 ✓ T.P. N of W. 69.35' 67.66	
N.W. 1/4 Sec. 24 Stone 10.9' E of edge part. 4' W. bank dch. ✓				
	#76-A		✓ Shiner in 24" maple NW. 57.00 ✓ Shiner in T.P. SW. 51.25 ✓ Shiner in T.P. NE. 35.70 35.75 ✓ X in SW. cor of old S. about SE. 15.95	
N.W. Cor. Sec. 24 Milton Twp. Merrill Rd. R.R. Spk. ✓				
	#77	20		
	#78			
	#79		✓ Shiner in T. Pole N.N.E. 113.25 ✓ Shiner in P.P. N.W. 40.57 40.52 Shiner in Cor. post S. 27.93 27.44 Stone on E. bank of dch. E. gone 25.00 ✓ Shiner in T.P. S.E. 35.66' 35.22 67'	
E 1/4 part Sec. 14 Milton Twp. Stone 8" below surface of part. 6' W. of E. Edge part. of pavement. R.R. Spk. ✓				
	#80	21		
	#81		✓ No. cor. N. wing of W. about Spk W. 13.95 ✓ No. Cor. N. wing of E. about Spk E. 14.16 Shiner in P.P. NW. Gone 45.55 ✓ Shiner in P.P. SW. 35.06' 33.40 ✓ Shiner in T.P. S.E. Plumb 34.17 34.27 ✓ Shiner in T. Pole East 61.34	
N.E. cor. Sec. 14 Milton Twp. Stone 0.6' deep R.R. Spk. Maple wood 2.5' ✓				
	#81	22		

PERSONNEL	TITLE	PERSONNEL	TITLE

COUNTY Wood DATE OK 12-13-60
 S. R. #69 WEATHER 4-15-60
 SEC. _____ TEMP. _____

DESCRIPTION _____ LEFT _____ CENTER LINE _____ RIGHT _____ JOB NO. _____

DESCRIPTION	LEFT	CENTER LINE	RIGHT	JOB NO.
#76 N.W. 1/4 Sec. 24 Stone 10.9'E of edge part. 4 W. bank etc.			Shiner in End Post of fence 57.13 Iron pipe W. 33.30 T.P. NW. 69.35' 47.50	
#76-A N.W. Cor. Sec. 24 Milton Twp. Merrimill Rd. R.R. Spk. ✓			Shiner in 24" maple NW. 57.00 Shiner in T.P. SW. 51.25 Shiner int. P. NE 35.80 35.75 X-in SW. cor of old S. about. SE. 15.95	
#77 E 1/4 part sec. 14 Milton Twp. Stone 8' below surface of part. 6' W. of E. Edge part. of pavement. R.R. Spk. ✓		40.09	Iron Rod W. 30.25 Shiner in T. Pole NNE. 113.05 Shiner in P.P. NW. 20.74 42.12 Shiner in Cor. part. W. 21.93 27.14 Shiner on E. bank of ditch. E. 25.05 Shiner in T.P. S.E. 35.66' 35.72	
#78				
#79 N.E. cor. Sec. 14 Milton Twp. 13.90 Stone 0.6 deep R.R. Spk. 14.13 Maplewood Rd. ✓			No. cor. N. wing of W. abut. Spk. 13.25 No. cor. N. wing of E. abut. Spk. 14.13 Shiner in P.P. NW. 35.63 Shiner in P.P. SW. 35.66' 37.40 Shiner in T.P. S.E. 34.17 Shiner in T. Pole East 61.34	
#80				
#81				

PERSONNEL	TITLE	PERSONNEL	TITLE

COUNTY Wood DATE OK 12-13-57
 S. R. #69 WEATHER 4-15-60
 SEC. _____ TEMP. _____

DESCRIPTION _____ LEFT _____ CENTER LINE _____ RIGHT _____ JOB NO. _____

#76

N.W. 1/4 sec. 24. Stone 10.9' E. of edge part. & W. bank dch. ✓

✓ Shiner in End Post of fence 37.13'
 ✓ Iron pipe W. 30.30'
 ✓ T.P. N. of W. 69.35' 69.50'

#76-A

N.W. Cor. sec. 24 Milton Twp. Merrill Rd. R.R. Spk. ✓

57.00
 ✓ Shiner in 24" maple N.W. 57.15
 ✓ Shiner in T.P. S.W. 51.25
 ✓ Shiner in T.P. N.E. 35.80 35.75
 ✓ X in S.W. cor of old S. abut. S.E. 15.93

#77

20

#78

#79

E 1/4 past sec. 14 Milton Twp. Stone 8" below surface of part. 6' W. of E. Edge part. of pavement. R.R. Spk. ✓

✓ Shiner in T. Pole N.W.E. 113.05
 ✓ Shiner in P.P. N.W. 40.07 40.02
~~Shiner in Cor. post W. 27.93 27.84~~
~~Stone on E. bank of dch. E. gone 25.53~~
 ✓ Shiner in T.P. S.E. 35.66' 35.82

#80

21

N.E. cor. Sec. 14 Milton Twp. Stone 0.6' deep R.R. Spk. Maplewood Ed. ✓

13.95'
 ✓ N.E. cor. N. wing of W. abut Spt W. 15.0'
 ✓ N.E. cor. N. wing of E. abut S of E. 14.16' 15.1'
~~Shiner in P.P. N.W. Gone 42.55~~
 ✓ Shiner in P.P. S.W. 35.06' 32.40
 ✓ Shiner in T.P. S.E. Plumb 34.17 34.35
 ✓ Shiner in T. Pole East 61.34'

22

#81