

O.D.O.T. DISTRICT 2 SURVEY OFFICE (USE ONLY)

PERSONNEL

REFERENCE NO. 26 AB

SHEET 3 OF 23

NOTES RHOADES

DATE 8-14-23

ROUTE SR 235

H.C. AUBLE

WEATHER CLOUDY

COUNTY WOOD

R.C. NIESE

TEMP. 72°

TOWNSHIP WESTON

DWG BY RHOADES

PID PAVETRAIN

SECTION 35

T 5 N R 9 E

TYPE MONUMENT MAG/WASHER

ON SURFACE - ~~BELOW~~ ON

OFFSET Q PAVEMENT 22' LT : ~~RT~~

12.9' LT TO LT EDGE PAVEMENT

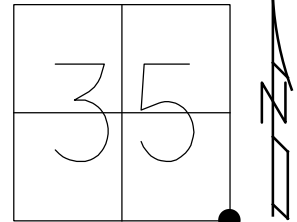
STATION: 637+88

HORIZ.DATUM: NAD83 2011

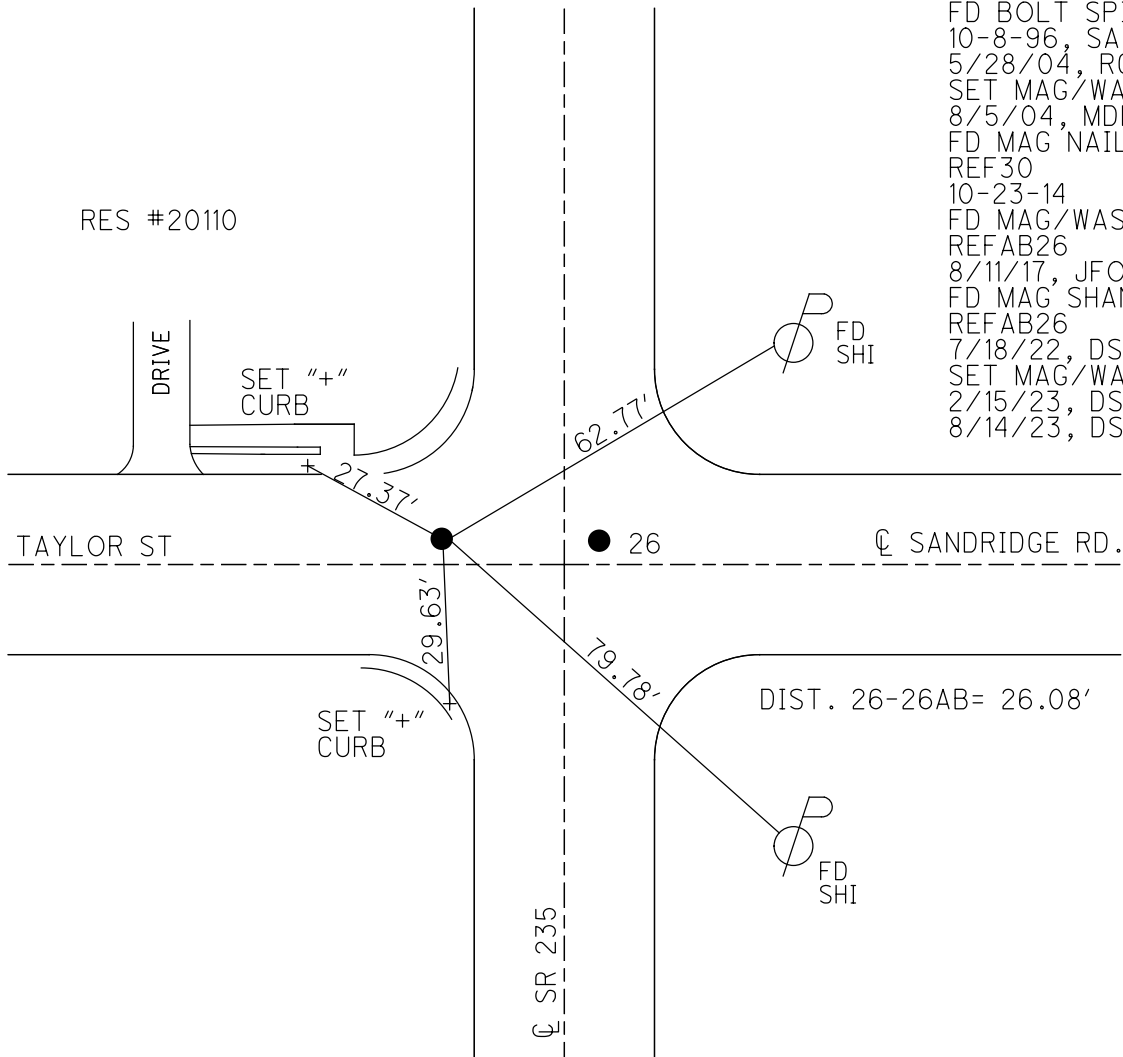
GEOID: NAVD88 2018

GRID: NORTHING: 613350.623

EASTING: 1615346.564



- RECORD:
 FD BOLT SPIKE
 10-8-96, SAH
 5/28/04, RGN
 SET MAG/WASHER
 8/5/04, MDB
 FD MAG NAIL
 REF30
 10-23-14
 FD MAG/WASHER
 REFAB26
 8/11/17, JFO
 FD MAG SHANK
 REFAB26
 7/18/22, DSA
 SET MAG/WASHER
 2/15/23, DSA
 8/14/23, DSA



O.D.O.T. DISTRICT 2 SURVEY OFFICE (USE ONLY)

PERSONNEL

REFERENCE NO. 26 AB

SHEET 3 OF 23

NOTES MILLER

DATE 2/15/23

ROUTE SR 235

H.C. AUBLE

WEATHER WINDY

COUNTY WOOD

R.C. NIESE

TEMP. 50°

TOWNSHIP WESTON

DWG BY RHOADES

PID PAVETRAIN

SECTION 35

T 5 N R 9 E

TYPE MONUMENT MAG/WASHER

~~ON SURFACE~~ - BELOW 1"

OFFSET Q PAVEMENT 22' LT : ~~RT~~

12.9' LT TO LT EDGE PAVEMENT

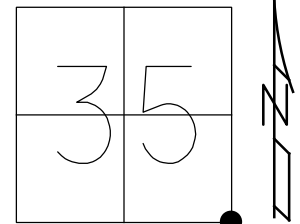
STATION: 637+88

HORIZ.DATUM: NAD83 2011

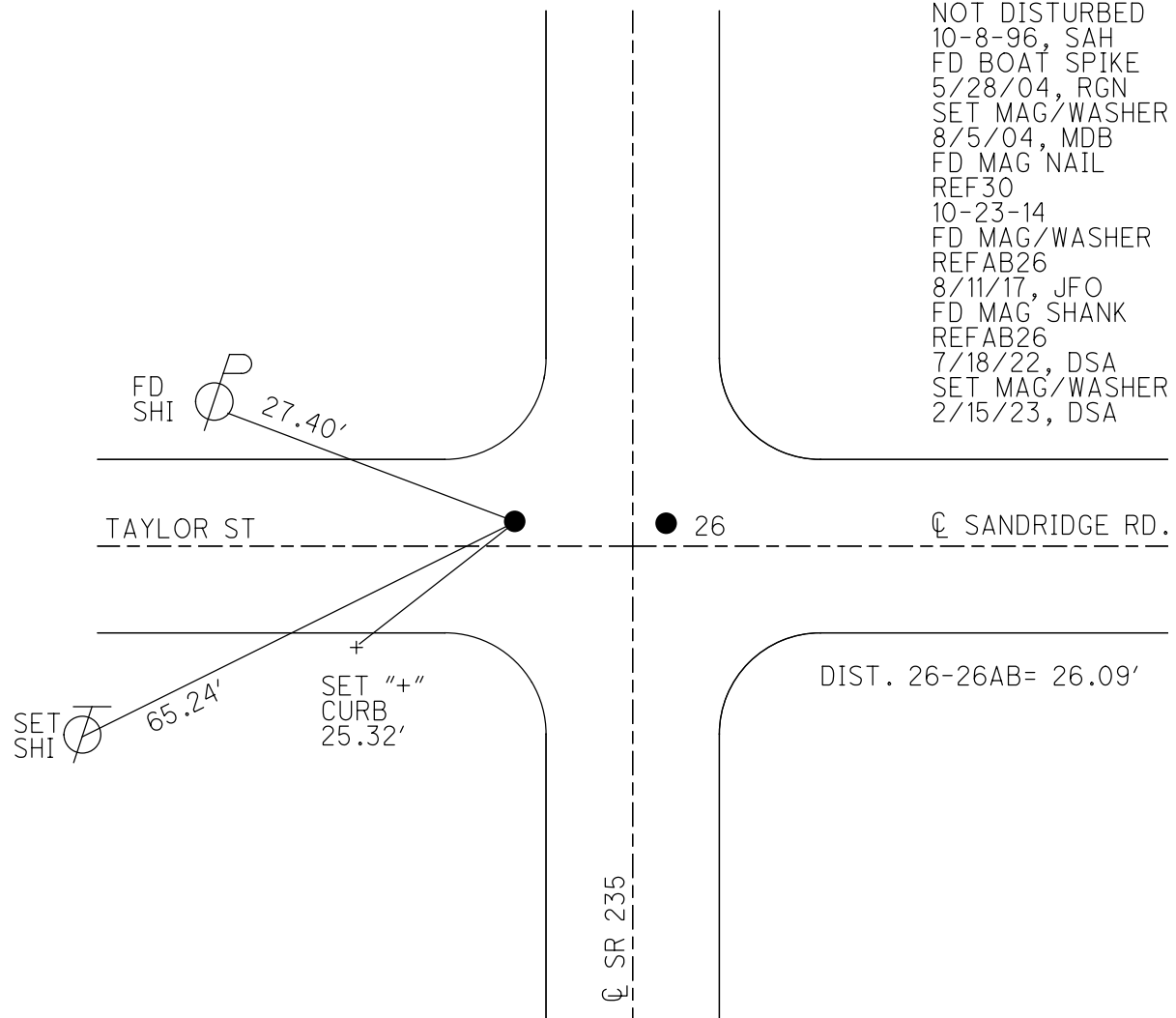
GEOID: NAVD88 2018

GRID: NORTHING: 613350.623

EASTING: 1615346.564



RECORD:
 NOT DISTURBED
 10-8-96, SAH
 FD BOAT SPIKE
 5/28/04, RGN
 SET MAG/WASHER
 8/5/04, MDB
 FD MAG NAIL
 REF30
 10-23-14
 FD MAG/WASHER
 REFAB26
 8/11/17, JFO
 FD MAG SHANK
 REFAB26
 7/18/22, DSA
 SET MAG/WASHER
 2/15/23, DSA

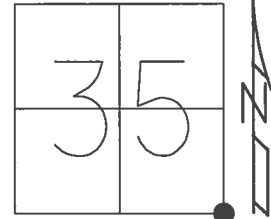


O.D.O.T. DISTRICT 2 SURVEY OFFICE (USE ONLY)

PERSONNEL _____ REFERENCE NO. 26 AB SHEET 3 OF 7

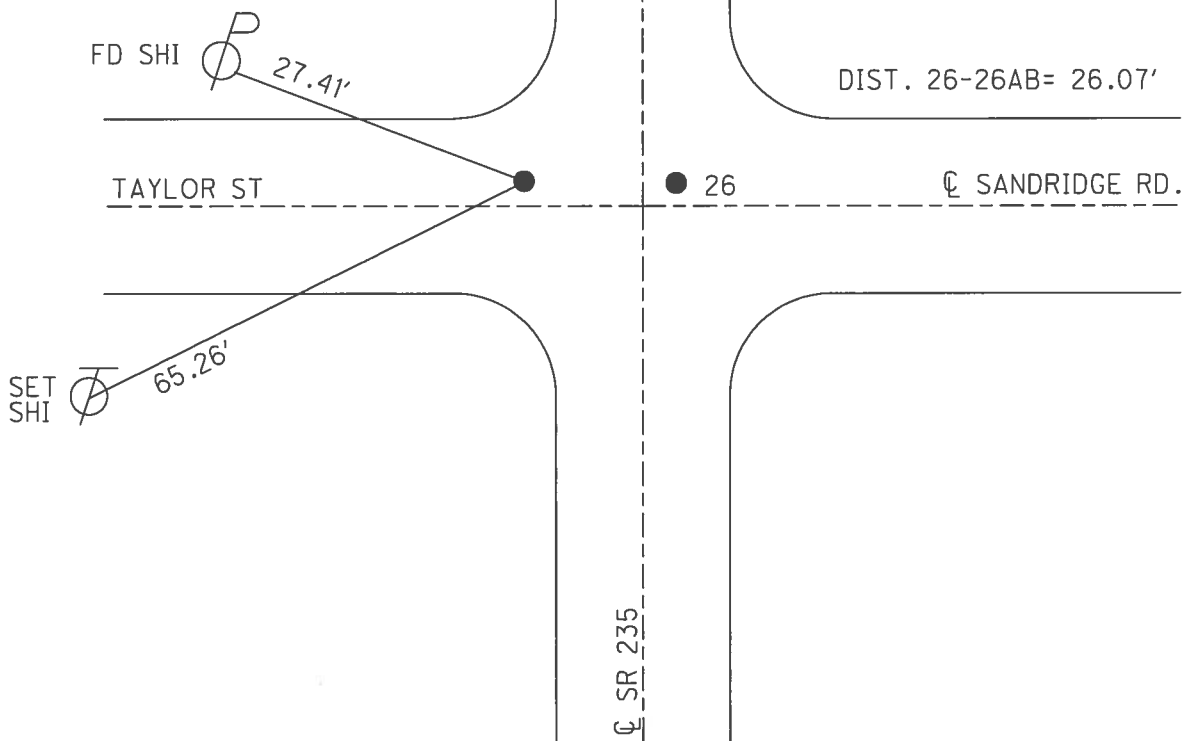
NOTES RHOADES DATE 8/11/17 ROUTE SR 235
 H.C. O'DONNELL WEATHER CLOUDY COUNTY WOOD
 R.C. RHOADES TEMP. 71° TOWNSHIP WESTON
 _____ SECTION 35
 _____ T 5 N R 9 E

TYPE MONUMENT MAG/WASHER
 ON SURFACE - ~~BELOW~~ ON _____
 LEFT - ☉ PAV'T - ~~RIGHT~~ 22'
12.9' LT TO LT EDGE PAVEMENT
 S.L.M. 637+88



Grid: Northing: 613350.629 Easting: 1615346.553

RECORD:
 NOT DISTURBED
 10-8-96, SAH
 FD BOAT SPIKE
 5/28/04, RGN
 SET MAG/WASHER
 08-05-04, MDB
 FD MAG NAIL
 REF30
 10-23-14
 FD MAG/WASHER
 REFAB26
 8/11/17, JFO

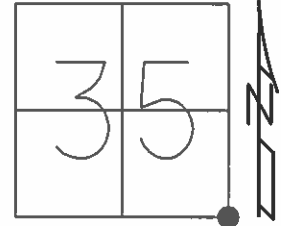


O.D.O.T. DISTRICT 2 SURVEY OFFICE (USE ONLY)

PERSONNEL _____ REFERENCE NO. 26 AB SHEET 3 OF 7

NOTES NUHFER DATE 5-28-04 ROUTE SR 235
 H.C. NUHFER WEATHER RAIN COUNTY WOOD
 R.C. HOFFMAN TEMP. 62°F TOWNSHIP WESTON
 _____ SECTION 35
 _____ T 5 N R 9 E

TYPE MONUMENT BOLT SPIKE
 ON SURFACE - ~~BELOW~~ ON
 LEFT - Q PAV'T - ~~RIGHT~~ 22'
12.9' LT TO LT EDGE PAVEMENT
 S.L.M. 637+88



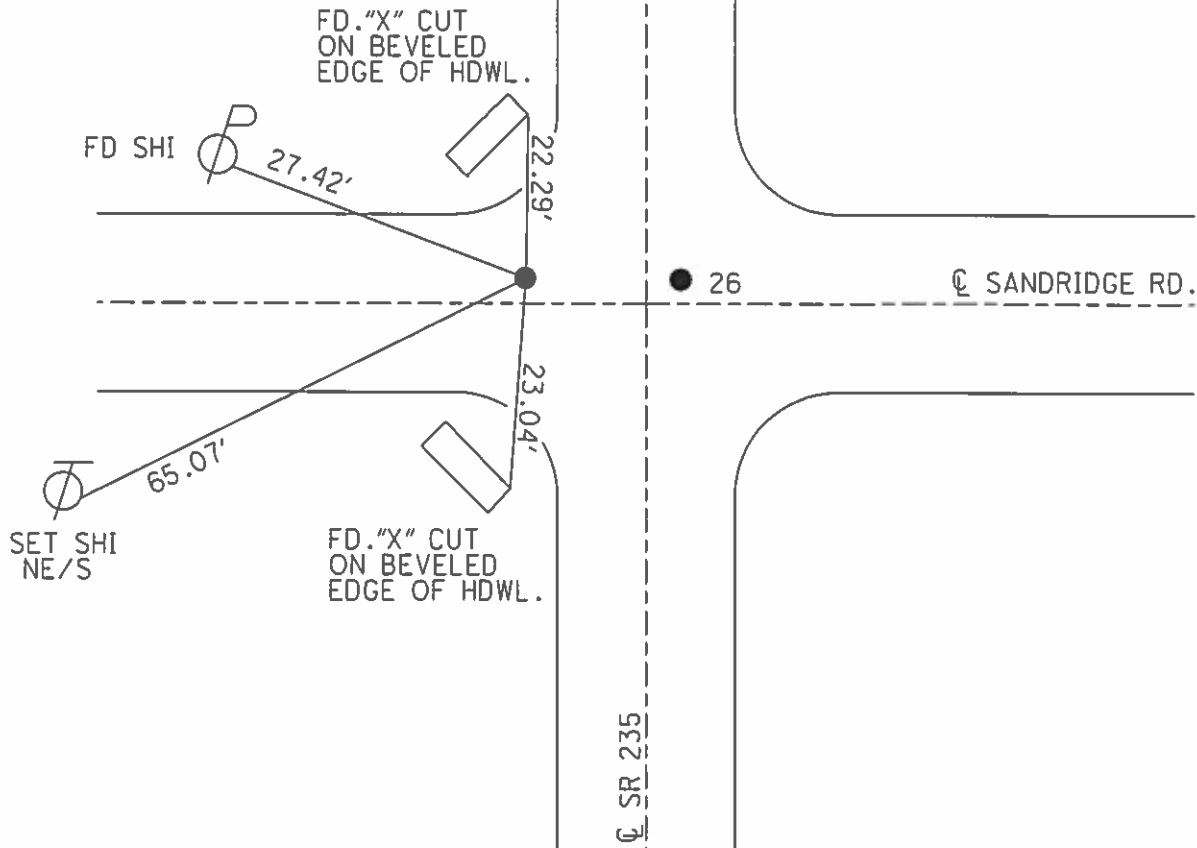
Grid: Northing: 613350.660 Easting: 1615346.569

RECORD:
 NOT DISTURBED
 10-8-96, SAH

DIST. 26-26AB= 26.05'

SET MAGS/WASHERS
 08-05-04, MDB

FD MAG
 GPS, REF30
 10-23-14



O.D.O.T. DISTRICT 2 SURVEY OFFICE

PERSONNEL

REFERENCE NO. 26

SHEET 24 OF 28

NOTES Van Nusen

H.C. Muser

R.C. Huss

DATE 7-31-96

WEATHER Clear

TEMP. +70° F

ROUTE 235

COUNTY Wood

TOWNSHIP Weston

SECTION 35

T 5 N R 9 E

Pt. A

Pt. B

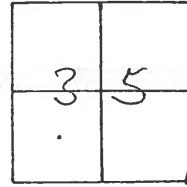
TYPE MONUMENT Sm. RR Spk. Both Spk.

ON SURFACE - BELOW on surface

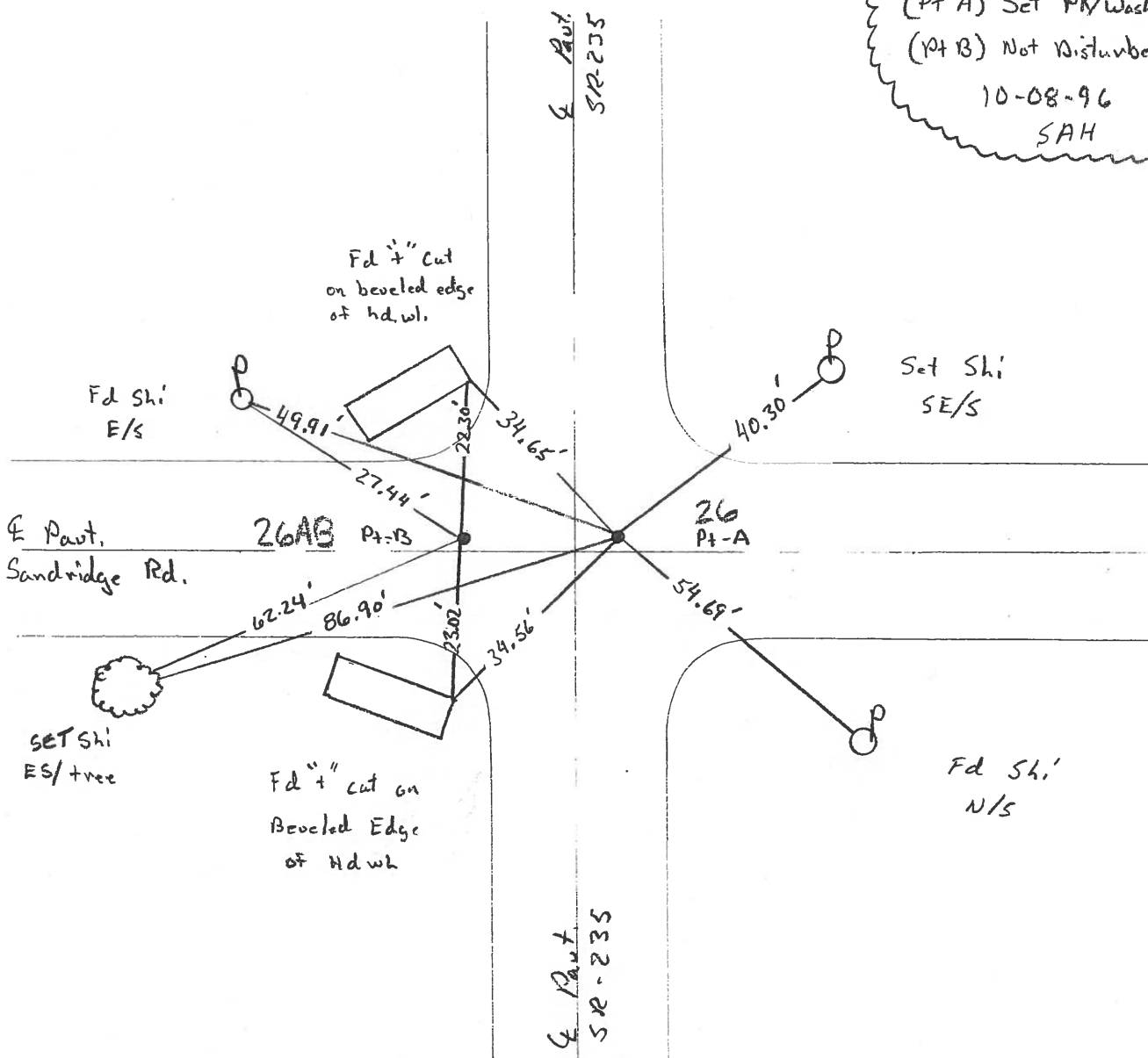
LEFT - PAV'T. - RIGHT (Pt A - 4.0 Rt. ♀) (Pt B - 22' Lt ♀)

(Pt A) 5.2 TO RT EDGE PAVEMENT (Pt B 12.9 to Lt Edge)

S.L.M. 637 + 62



(Pt A) Set PK/Washer
 (Pt B) Not Disturbed
 10-08-96
 SAH



O.D.O.T. DISTRICT 2 SURVEY OFFICE

PERSONNEL

REFERENCE NO. 26

SHEET _____ OF _____

NOTES BARNHISEL

H.C. Loehrke

DATE 6-9-86

ROUTE 235

R.C. HOFFMAN

WEATHER SUNNY

COUNTY WOOD

TEMP. +70°

TOWNSHIP Weston

SECTION 35

T. 5 N. R. 9 E.

TYPE MONUMENT Sm RR Spk Pt "A" Bolt Spk Pt "B"

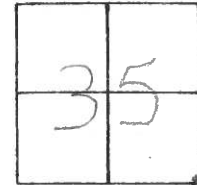
ON SURFACE - BEEOW yes

LEFT- & PAV'T. - RIGHT Pt "A" 4.7 Rt Pt "B" 21.4 Lt &

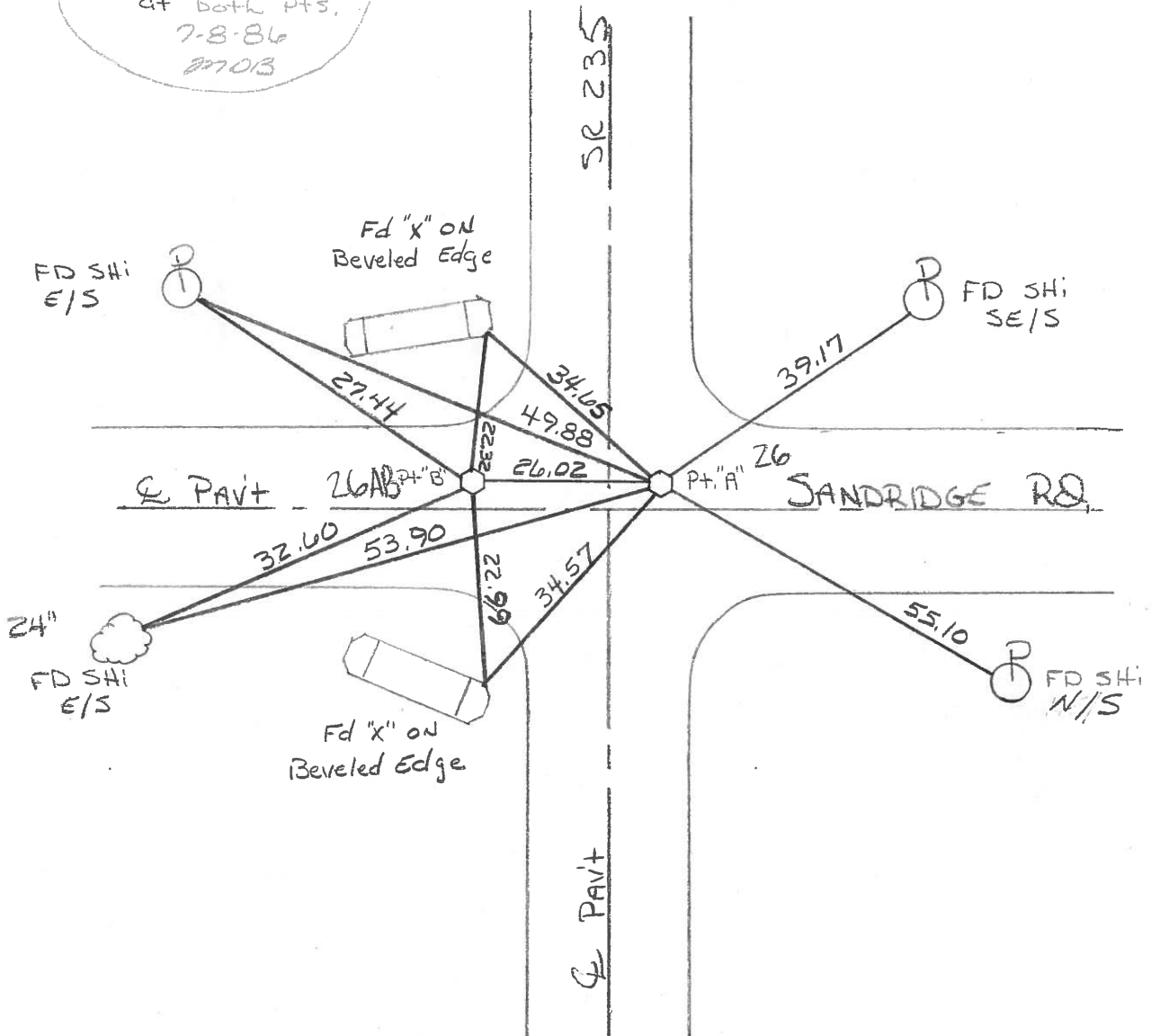
- TO - EDGE PAVEMENT

S.L.M. 637 +76

Both Pts ARE 1.5' N of SAND. Rd W.



Set Sm RR spks
at both Pts.
7-8-86
270B



PERSONNEL	TITLE	PERSONNEL	TITLE
Smith			
Bowers			
Mead			

COUNTY Wood DATE 2-23-1976

S. R. 235 WEATHER Clear

SEC. TEMP. 28°

DESCRIPTION $\frac{1}{4}$ Control Ties

JOB NO.

