

O.D.O.T. DISTRICT 2 SURVEY OFFICE (USE ONLY)

PERSONNEL

REFERENCE NO. 26 A

SHEET 4 OF 23

NOTES RHOADES DATE 8/11/17

H.C. O'DONNELL WEATHER CLOUDY

R.C. RHOADES TEMP. 71°

ROUTE SR 235

COUNTY WOOD

TOWNSHIP WESTON

SECTION 35

DWG BY RHOADES PID PAVETRAIN

T 5 N R 9 E

TYPE MONUMENT MAG/WASHER

ON SURFACE - ~~BELOW~~ ON

OFFSET Q PAVEMENT 19.2' LT : ~~RT~~

10' LT TO LT EDGE PAVEMENT

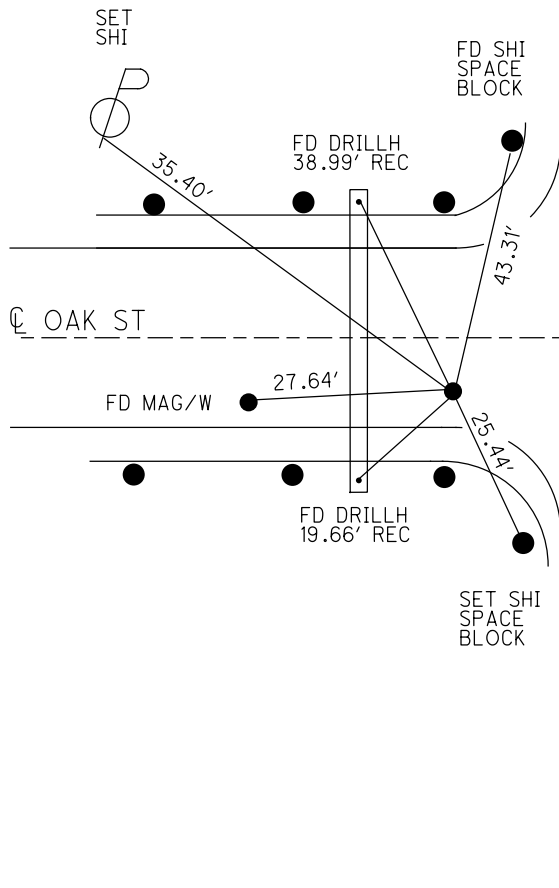
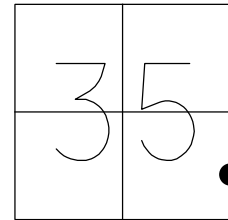
STATION: 651+59.52

HORIZ.DATUM: NAD83 2011

GEOID: NAVD88 2018

GRID: NORTHING: 614680.547

EASTING: 1615363.135

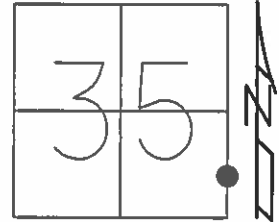


- RECORD:
- SET SM.R.R.SPIKE
  - 7-8-86, MDB
  - SET PK/WASHER
  - 10-8-96, SAH
  - FD P.K./WASHER
  - 5/28/04, RGN
  - SET MAG/WASHER
  - 08-05-04, MDB
  - FD MAG/WASHER
  - REF31
  - 10-23-14
  - FD MAG/WASHER
  - REFA26
  - 8/11/17, JFO
  - FD MAG SHANK
  - REFA26
  - 7/18/22, DSA
  - SET MAG/WASHER
  - 2/15/23, DSA

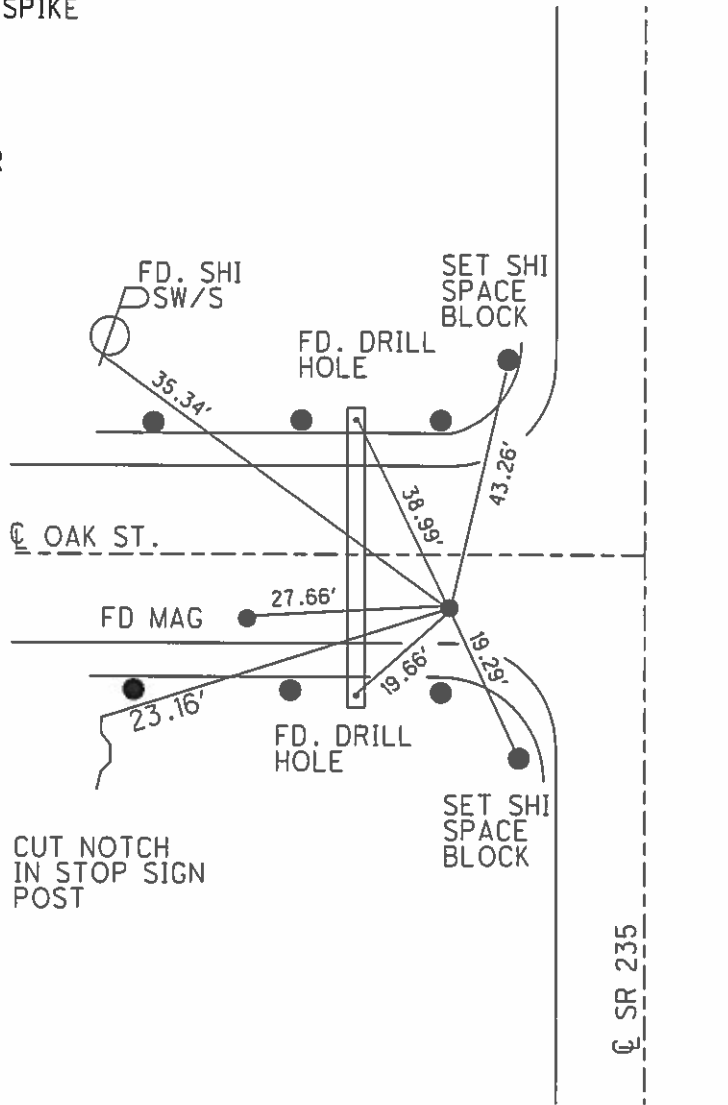
**O.D.O.T. DISTRICT 2 SURVEY OFFICE (USE ONLY)**

PERSONNEL \_\_\_\_\_ REFERENCE NO. 26 A SHEET 4 OF 7  
 NOTES NUHFER DATE 5-28-04 ROUTE SR 235  
 H.C. NUHFER WEATHER CLOUDY COUNTY WOOD  
 R.C. HOFFMAN TEMP. 62°F TOWNSHIP WESTON  
 \_\_\_\_\_ SECTION 35  
 \_\_\_\_\_ T 5 N R 9 E

TYPE MONUMENT PK/WASHER  
 ON SURFACE - ~~BELOW~~ ON  
 LEFT - ☉ PAV'T - ~~RIGHT~~ 19.2'  
10' TO LT EDGE PAVEMENT  
 S.L.M. 651+59.52  
 Grid: Northing: 614680.597 Easting: 1615363.128



- RECORD:  
 SET SMALL R.R. SPIKE  
 7-8-86, MDB  
 SET PK/WASHER  
 10-8-96, SAH  
 SET MAG/WASHER  
 08-05-04, MDB  
 FD MAG/WASHER  
 GPS, REF31  
 10-23-14



# O.D.O.T. DISTRICT 2 SURVEY OFFICE

PERSONNEL \_\_\_\_\_

REFERENCE NO. 26-A

SHEET 25 OF 28

NOTES Van Dusen

H.C. Moser

R.C. Huss

DATE 7-31-96

WEATHER Clean

TEMP. +70° F

ROUTE 235

COUNTY Wood

TOWNSHIP Weston

SECTION 35

T 5 N R 9 E

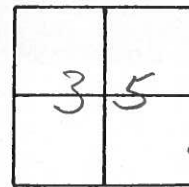
TYPE MONUMENT lg RR Spk

ON SURFACE - ~~BELOW~~ surface

LEFT- & PAVT. - ~~RIGHT~~ 19.2'

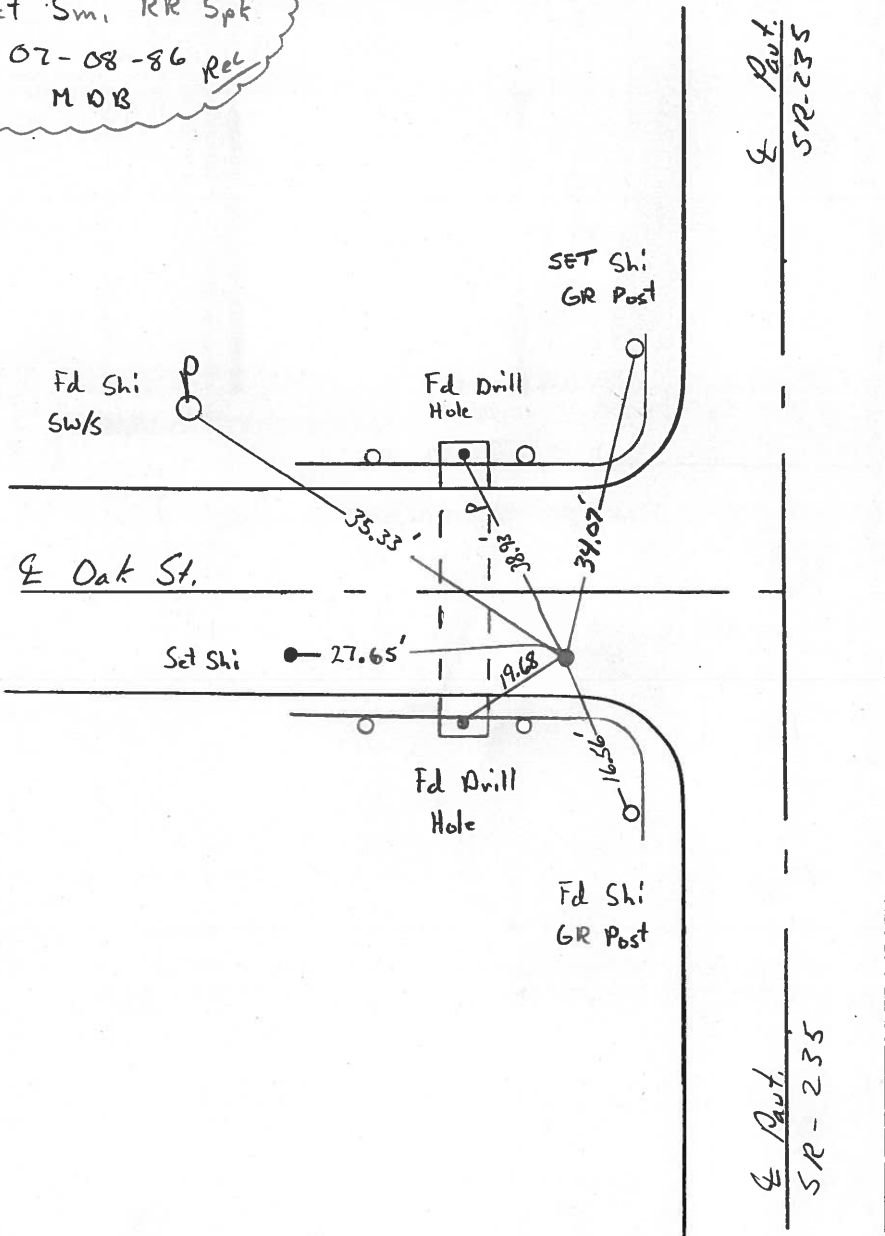
10.0' TO Lt. EDGE PAVEMENT

S.L.M. 650 + 95 (7.5' S of & Oak St.)



Set Sm. RR Spk  
07-08-86 Rec  
M O B

Set PK/Washer  
10-08-96  
S.A.H.



E Paut.  
SR-235

E Paut.  
SR-235

# O.D.O.T. DISTRICT 2 SURVEY OFFICE

PERSONNEL \_\_\_\_\_

REFERENCE NO. 26-A

SHEET \_\_\_\_\_ OF \_\_\_\_\_

NOTES BARNHISEL

H.C. Loehrke

DATE 6-9-86

ROUTE 235

R.C. HOFFMAN

WEATHER SUNNY

COUNTY WOOD

TEMP. +70°

TOWNSHIP Weston

SECTION 35

T5 N R 9 E

TYPE MONUMENT Lg RR Spk

Set Sm RR Spk  
7-8-86  
MOB

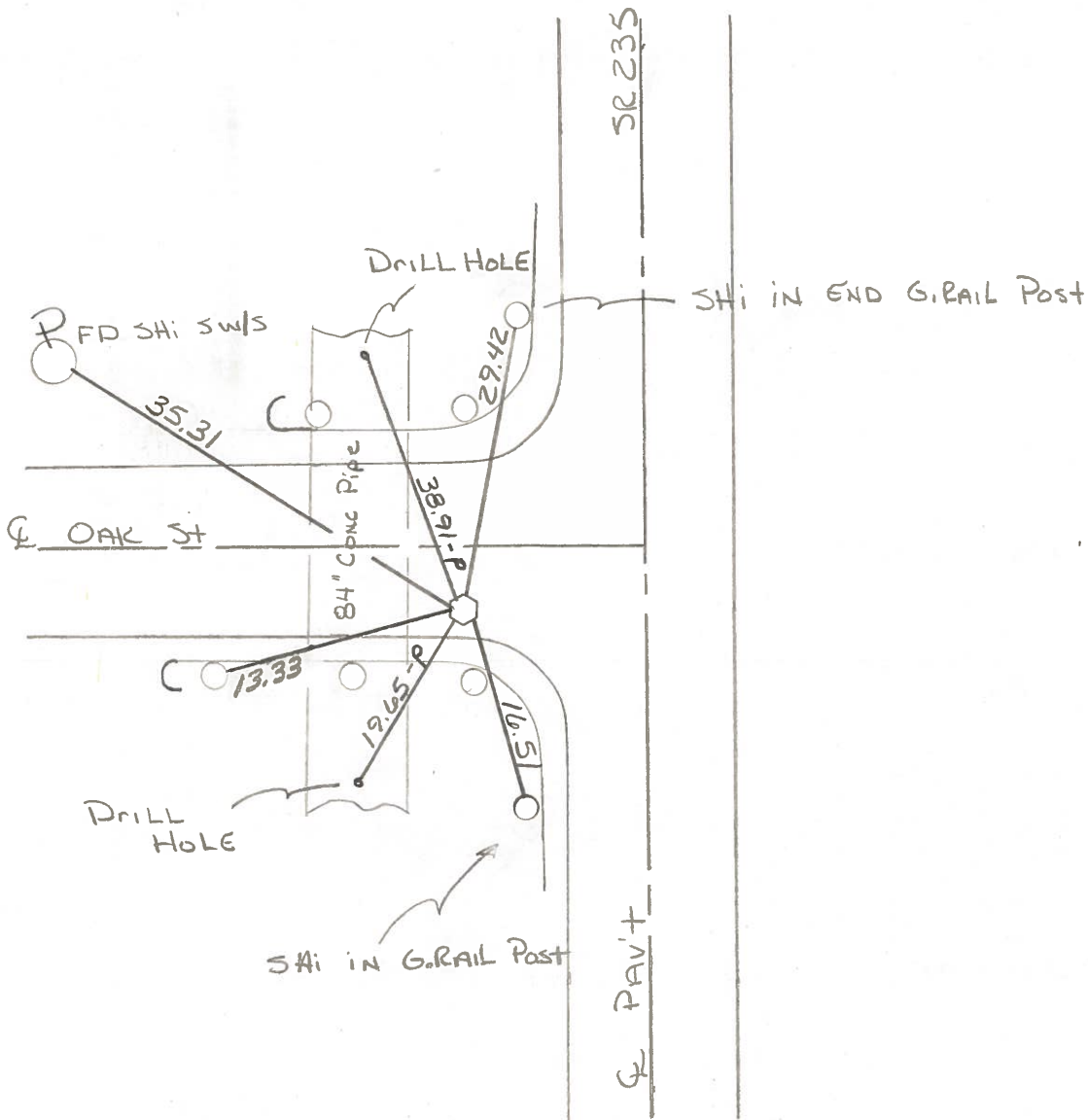
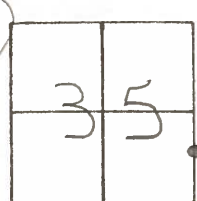
ON SURFACE - ~~BELOW~~ yes

LEFT- & PAV'T. - ~~RIGHT~~ 17.8

- TO - EDGE PAVEMENT

S.L.M. 651+07

7.5 S. of E OAK ST



PERSONNEL	TITLE	PERSONNEL	TITLE
Smith			
Bowers			
Mead			

COUNTY Wood DATE 2-23-1976

S. R. 235 WEATHER Clear

SEC. TEMP. 28°

DESCRIPTION  $\frac{1}{4}$  Control Ties

JOB NO.

