

O.D.O.T. DISTRICT 2 SURVEY OFFICE (USE ONLY)

PERSONNEL \_\_\_\_\_ REFERENCE NO. 29 SHEET 7 OF 7

NOTES RHOADES DATE 8-26-15 ROUTE SR 235  
H.C. O'DONNELL WEATHER CLOUDY COUNTY WOOD  
R.C. RHOADES TEMP. 65°F TOWNSHIP WESTON  
SECTION 26  
T 5 N R 9 E

TYPE MONUMENT PK/WASHER

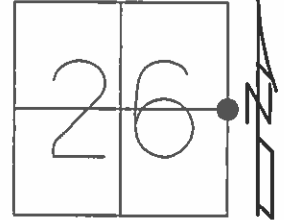
ON SURFACE - ~~BELOW~~ ON \_\_\_\_\_

~~LEFT~~ - CL PAV'T - RIGHT 0.4'

8.5' TO RT EDGE PAVEMENT

S.L.M. 717+88.49

Grid: Northing: 621309.439 Easting: 1615407.523



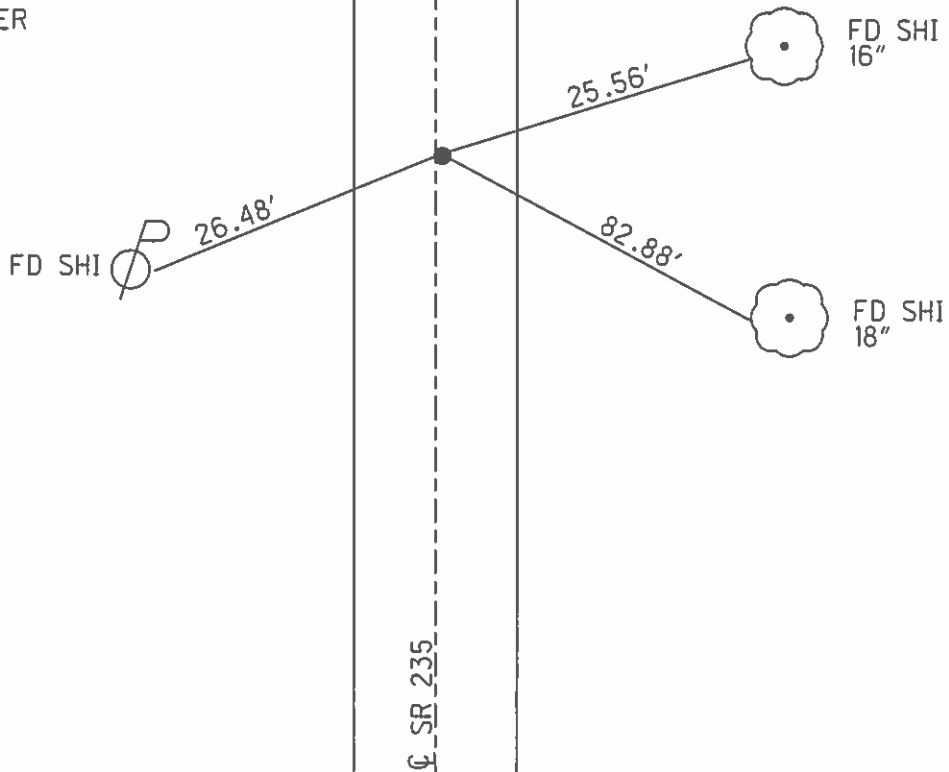
RECORD:  
SET SM. RR SPIKE  
7-8-86, MDB

SET PK/WASHER  
10-8-96, SAH

CHIPPED OUT  
08-05-04, MDB

FD PK/WASHER  
GPS, REF34  
10-23-14

SET MAG/WASHER  
GPS, NEWREF29  
9-8-16, JFO



O.D.O.T. DISTRICT 2 SURVEY OFFICE

PERSONNEL

REFERENCE NO. 29

SHEET 8 OF 8

NOTES NUHFER

DATE 05-28-04

ROUTE S.R. 235

H.C. NUHFER

WEATHER CLDY

COUNTY WOOD

R.C. HOFFMAN

TEMP. +62°

TOWNSHIP WESTON

SECTION 26

T 5 N R 9 E

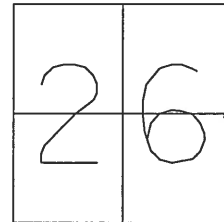
TYPE MONUMENT PK WASHER

ON SURFACE SURFACE

LEFT - Q PAV'T 0.4 'RT

8.5 TO RT EDGE PAVEMENT

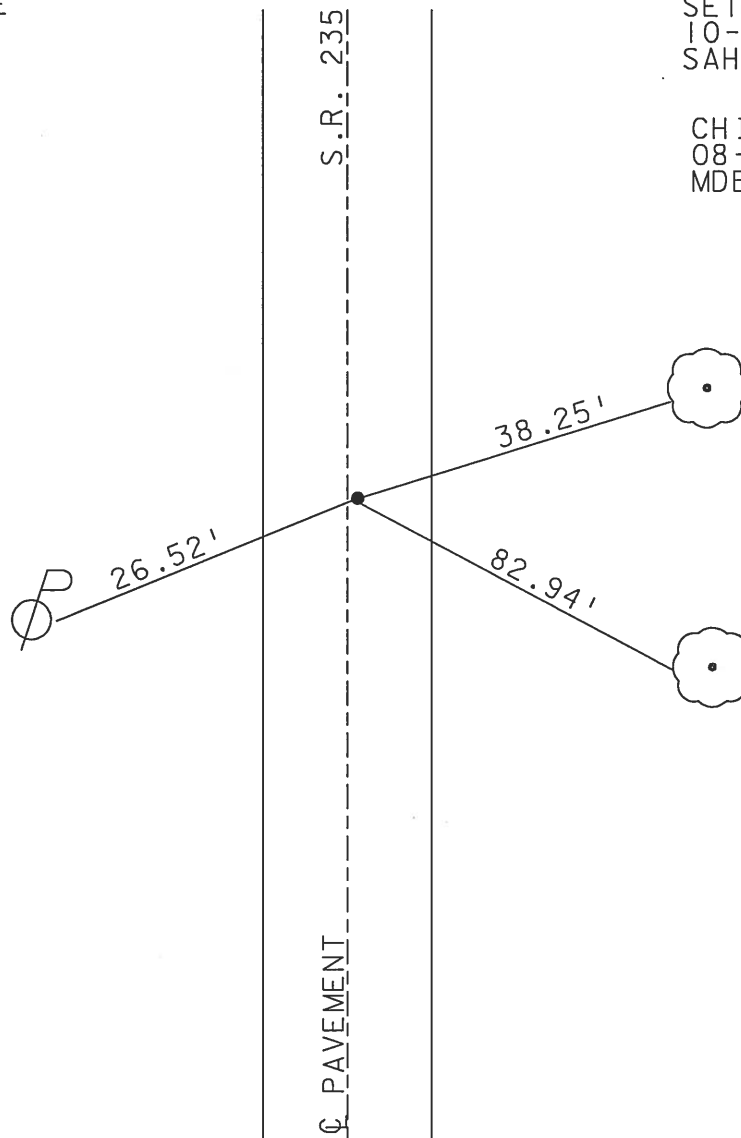
S.L.M. 717+38



SET SM. RR SPIKE  
7-8-86  
MDB

SET PK/WASHER  
10-8-96  
SAH

CHIPPED OUT  
08-05-04  
MDB



# O.D.O.T. DISTRICT 2 SURVEY OFFICE

PERSONNEL \_\_\_\_\_

REFERENCE NO. 29

SHEET 28 OF 28

NOTES Van Dusen

H.C. Moser

R.C. Huss

DATE 7-31-96

WEATHER Clear

TEMP. +70°F

ROUTE 235

COUNTY Wood

TOWNSHIP Western

SECTION 26

T 5 N R 9 E

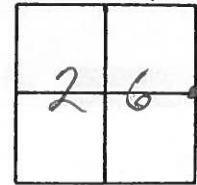
TYPE MONUMENT lg RR Spk.

~~ON SURFACE~~ - BELOW 4"

~~LEFT - C. PAV T. - RIGHT~~ 0.4

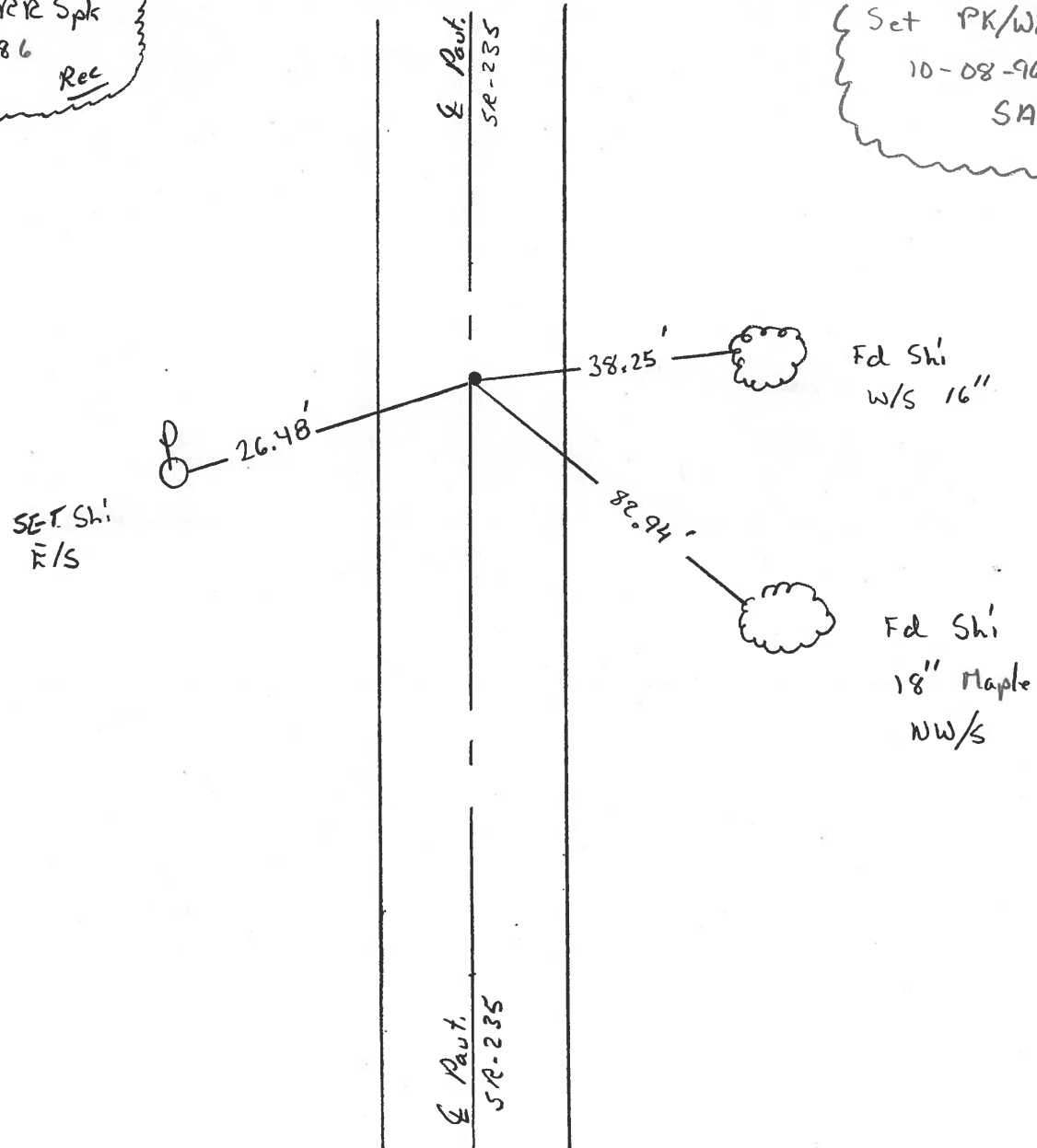
8.5' TO RT. EDGE PAVEMENT

S.L.M. 717 + 38



Set Sm. RR Spk  
07-08-86  
M DB Rec

Set PK/Washer  
10-08-96  
SAH



# O.D.O.T. DISTRICT 2 SURVEY OFFICE

PERSONNEL \_\_\_\_\_

REFERENCE NO. 29

SHEET \_\_\_\_\_ OF \_\_\_\_\_

NOTES BARNHISEL

H.C. Loehrke

R.C. Hoffman

DATE 6-9-86

WEATHER SUNNY

TEMP. +70°

ROUTE 235

COUNTY Wood

TOWNSHIP Weston

SECTION 26

T.5 N.R. 9 E

TYPE MONUMENT Lg RR Spk

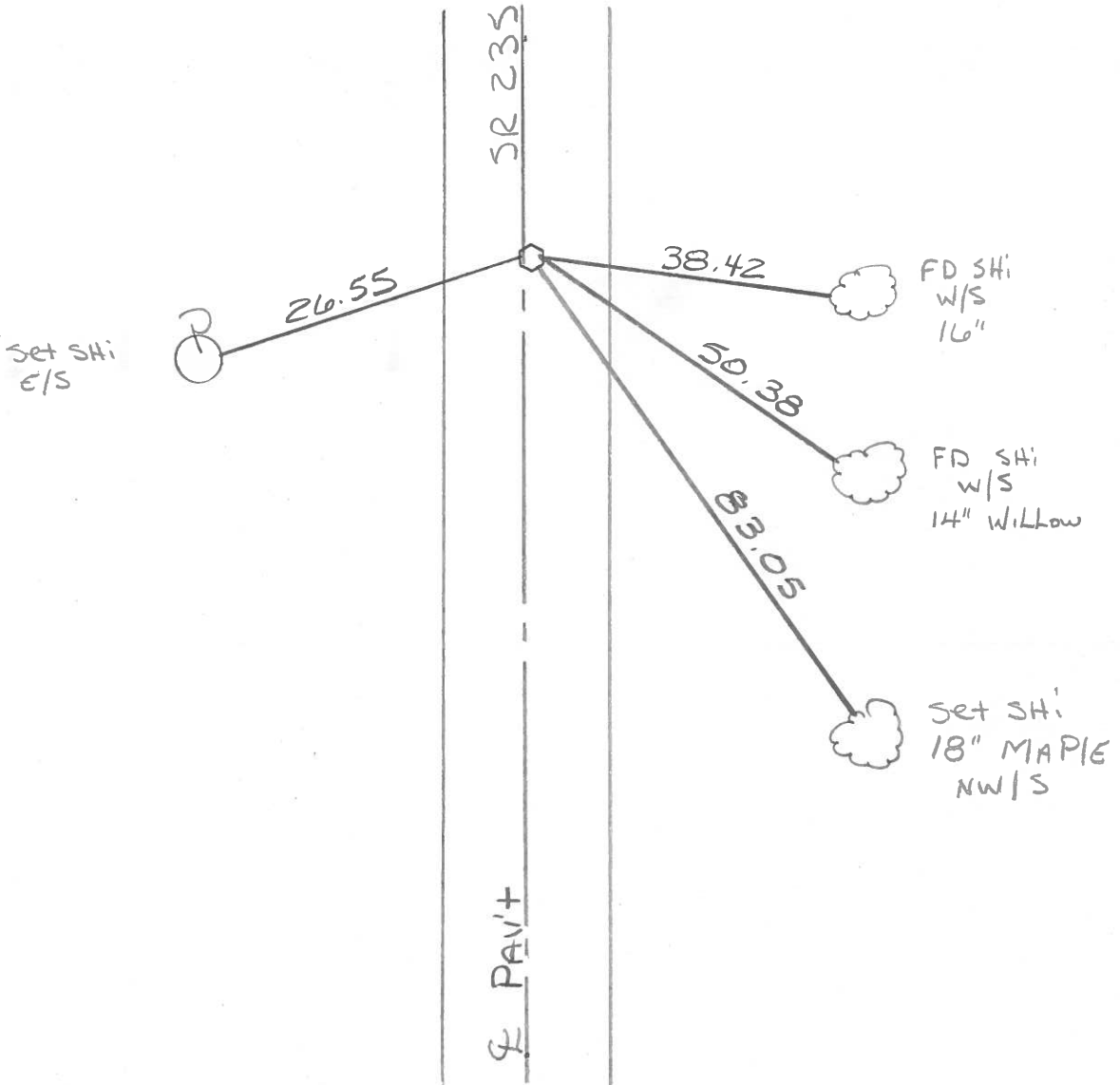
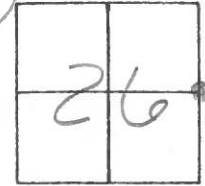
ON SURFACE - BELOW 4"

LEFT - Q PAV'T. - RIGHT .5

8.4 TO Rt EDGE PAVEMENT

S.L.M. 717+45

Set Sm RR Spk  
7-8-86  
M.D.B.



PERSONNEL	TITLE	PERSONNEL	TITLE	COUNTY	DATE
HOFFMAN	PERSONNEL			WOOD	9-14-83
LOHRKE				S. R.	235
HOUSEHOLDER				SEC.	E 1/4 Post Sec. 26
BARNHISEL				TEMP.	+50°

DESCRIPTION WESTON TWP. JOB NO.

