

O.D.O.T. DISTRICT 2 SURVEY OFFICE (USE ONLY)

PERSONNEL

REFERENCE NO. 30

SHEET 1 OF 16

NOTES LEU

DATE 7-13-2016

ROUTE SR 235

H.C. HOMAN

WEATHER SUNNY

COUNTY WOOD

R.C. KEFFER

TEMP. 76°

TOWNSHIP WESTON

DWG BY AUBLE PID 85271

SECTION 25

T 5 N R 9 E

TYPE MONUMENT PK/WASHER

ON SURFACE - ~~BELOW~~ ON

OFFSET  $\varnothing$  PAVEMENT 0.5' ~~LT~~ : RT

- TO - EDGE PAVEMENT

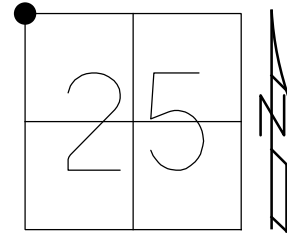
STATION: 744+41.03

HORZ.DATUM: NAD83(2011)

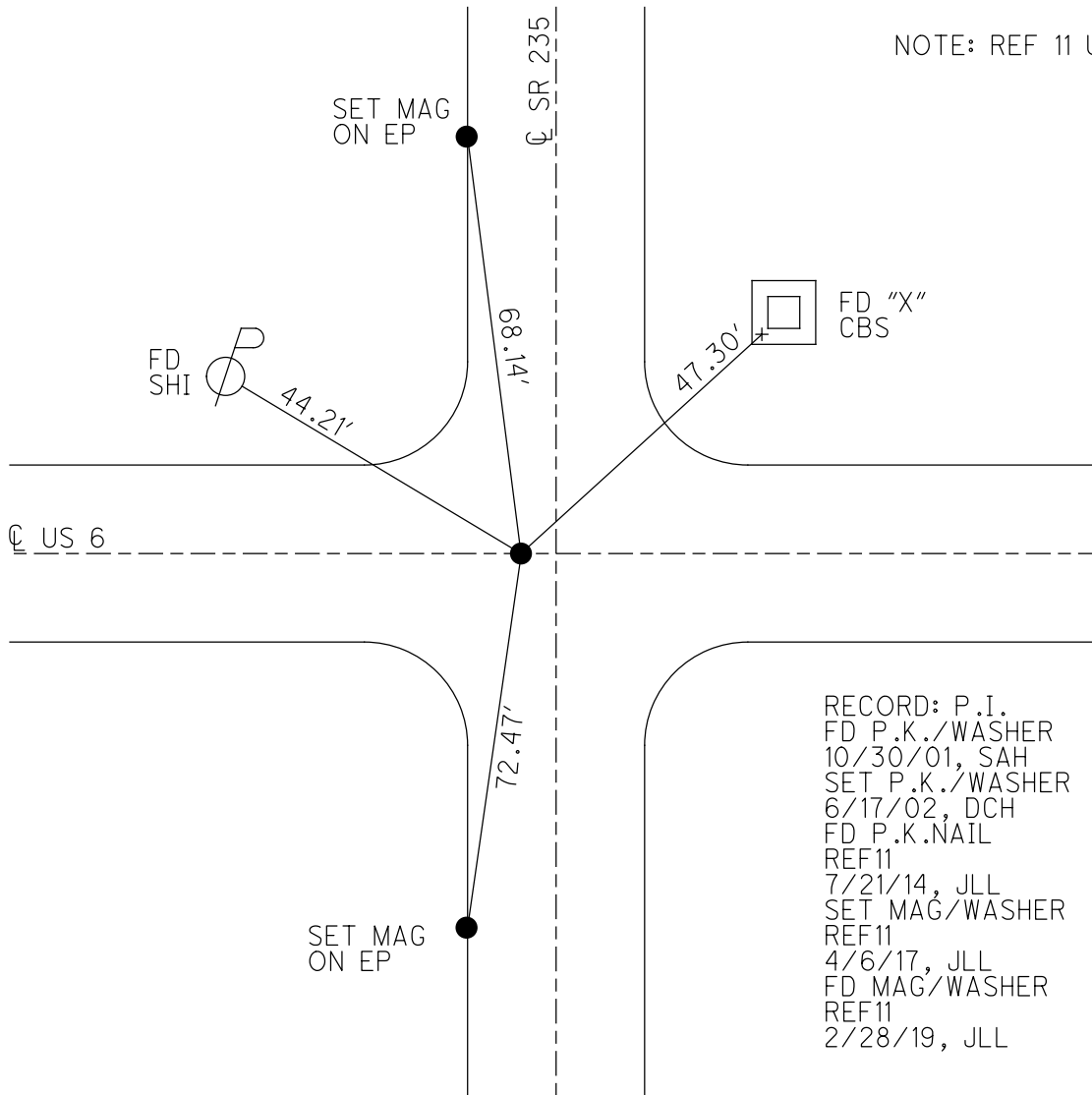
GEOID: NAVD88 2012A

GRID: NORTHING: 623961.810

EASTING: 1615438.604



NOTE: REF 11 US 6

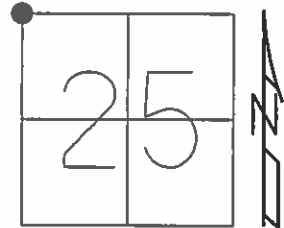


RECORD: P.I.  
 FD P.K./WASHER  
 10/30/01, SAH  
 SET P.K./WASHER  
 6/17/02, DCH  
 FD P.K.NAIL  
 REF11  
 7/21/14, JLL  
 SET MAG/WASHER  
 REF11  
 4/6/17, JLL  
 FD MAG/WASHER  
 REF11  
 2/28/19, JLL

O.D.O.T. DISTRICT 2 SURVEY OFFICE (USE ONLY)

PERSONNEL \_\_\_\_\_ REFERENCE NO. 30 SHEET 1 OF 16  
 NOTES HOFFMAN DATE 7-24-90 ROUTE SR 235  
 H.C. BARNHISEL WEATHER CLEAR COUNTY WOOD  
 R.C. LOEHKE TEMP. 30°F TOWNSHIP WESTON  
 \_\_\_\_\_ SECTION 25  
 \_\_\_\_\_ T 5 N R 9 E

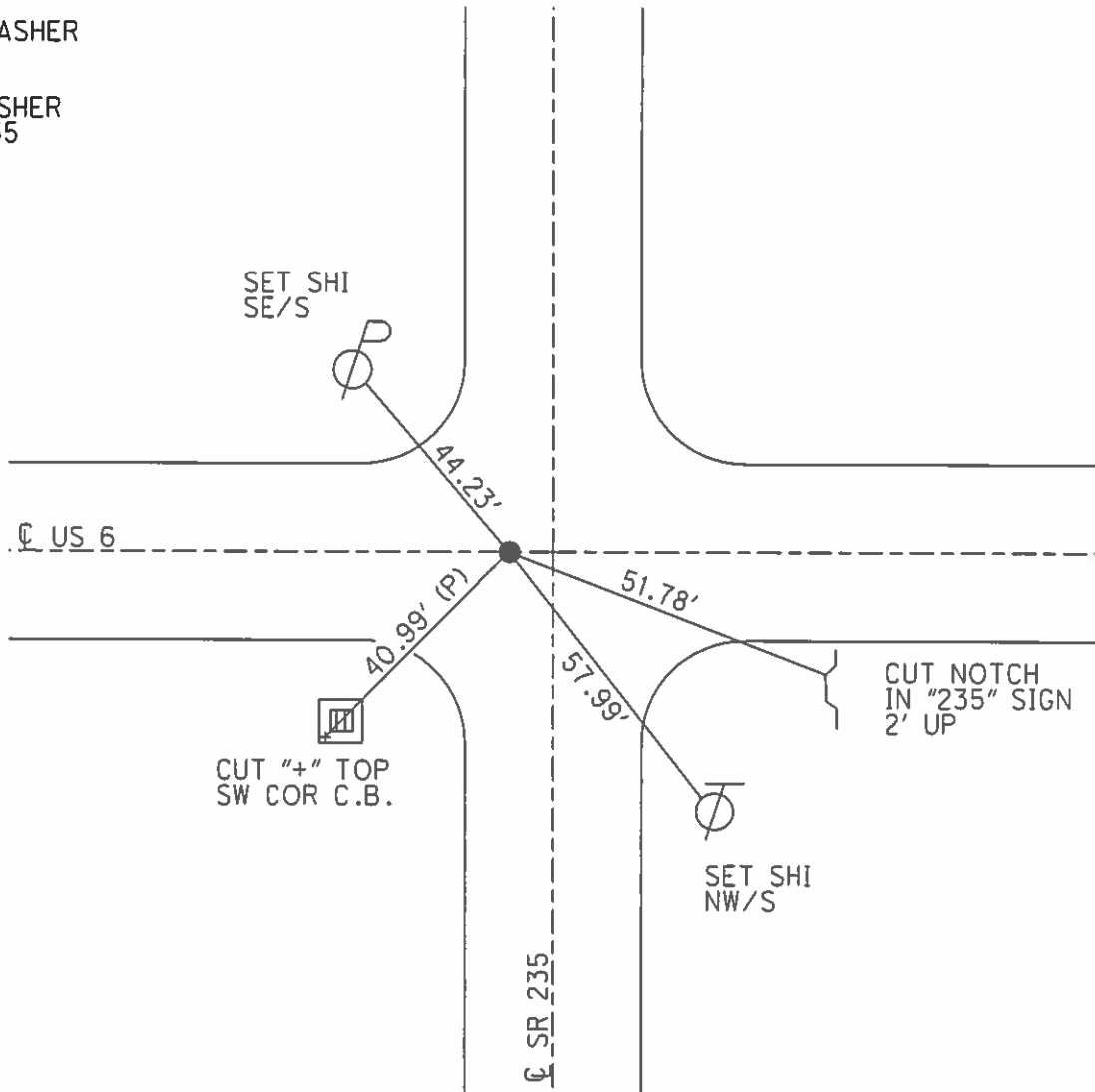
TYPE MONUMENT PK/WASHER  
 ON SURFACE - ~~BELOW~~ ON  
 LEFT - ☉ PAV'T - RIGHT ON  
 \_\_\_\_\_ TO \_\_\_\_\_ EDGE PAVEMENT  
 S.L.M. 744+41.03



Grid: Northing: 623961.767 Easting: 1615438.618

RECORD:  
 SET PK/WASHER  
 8-10-90

FD PK/WASHER  
 GPS, REF35



# O.D.O.T. DISTRICT 2 SURVEY OFFICE

PERSONNEL

REFERENCE NO. 11 SHEET      OF       
30 on SR 235

NOTES HOFFMAN

H.C. BARNHISEL

DATE 7-24-90

ROUTE U.S. 6

R.C. LOENKE

WEATHER CLEAR

COUNTY WOOD

TEMP. 80°

TOWNSHIP WESTON

SECTION 25

T5 N R 9 E

TYPE MONUMENT P.K. / WASHER

Set

ON SURFACE - ~~BELOW~~ YES

P.K. / washer

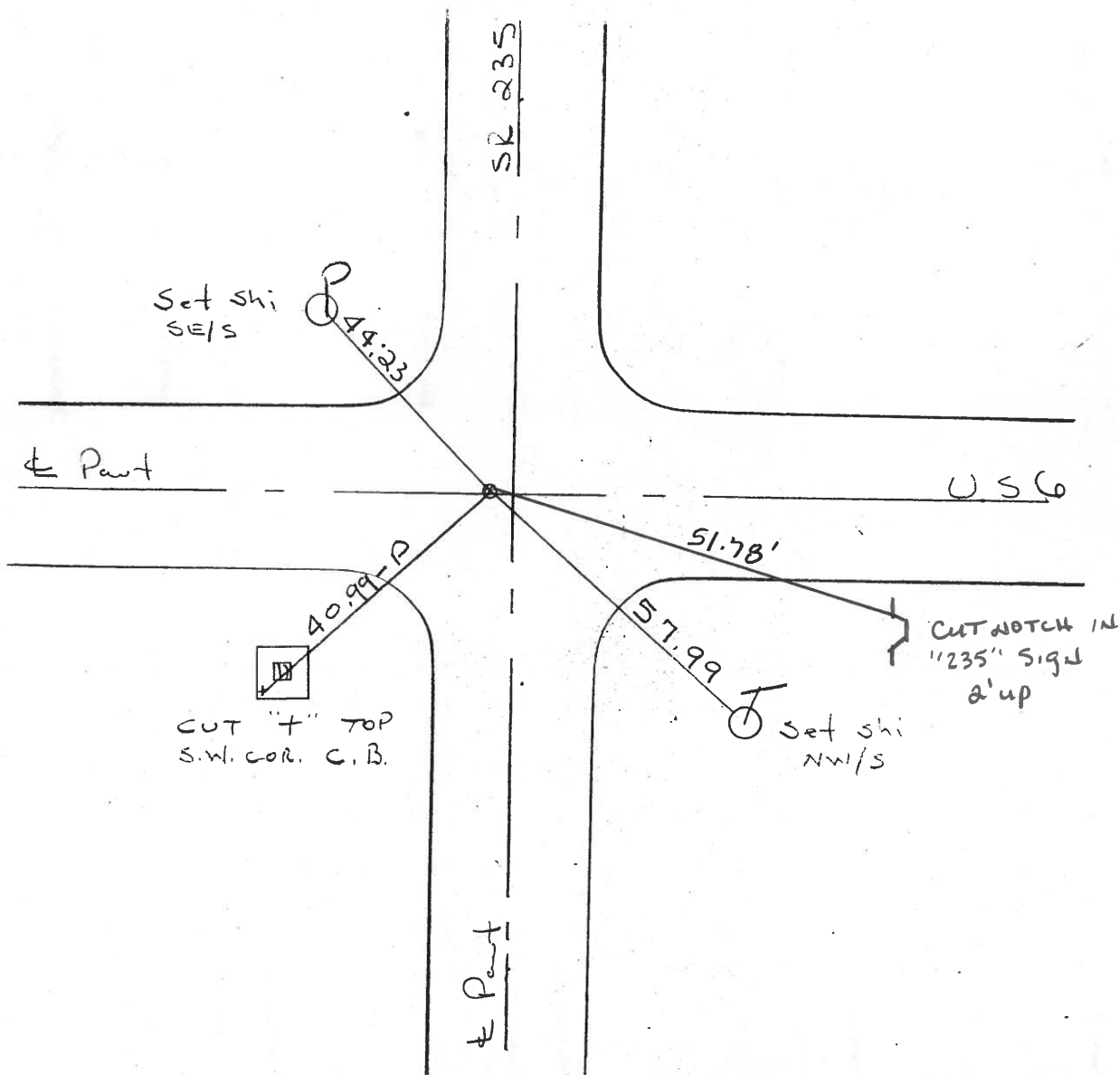
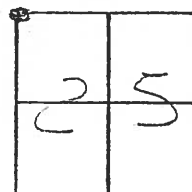
~~LEFT - & PAV'T.~~ ~~RIGHT~~ YES

8-10-90

     TO      EDGE PAVEMENT 2.0' W. & Part S.

SR 235

S.L.M. 266 + 21



PERSONNEL	TITLE	PERSONNEL	TITLE
BURNSIDE			
SMITH			
MEAD			

COUNTY WOOD DATE 5-7-76

S. R. 235 & U.S. 6 WEATHER Pt. Cloudy

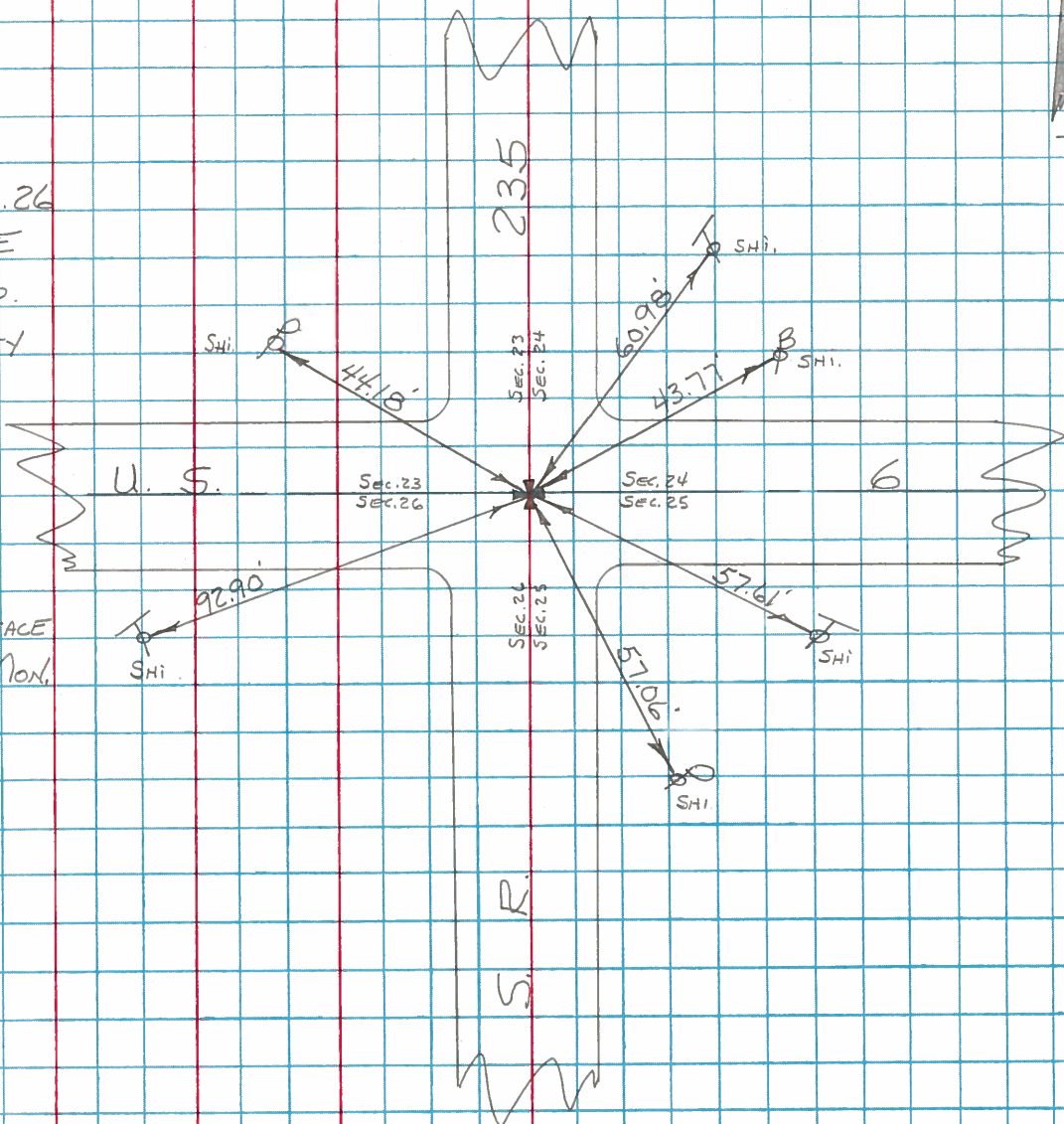
SEC. \_\_\_\_\_ TEMP. 152°

DESCRIPTION	REF. TO SECTION CORNER	JOB NO.
	LEFT CENTER LINE RIGHT	

30



NE. COR. SEC. 26  
 T-5-N R-9-E  
 WESTON TWP.  
 WOOD COUNTY



P.K. NAIL @ SURFACE  
 OVER BRASS MON.