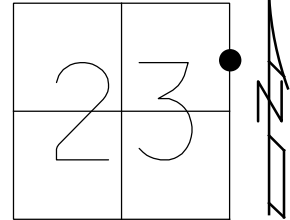


O.D.O.T. DISTRICT 2 SURVEY OFFICE (USE ONLY)

PERSONNEL _____ REFERENCE NO. 31 A SHEET 3 OF 16
 NOTES RHOADES DATE 8/26/15 ROUTE SR 235
 H.C. O'DONNELL WEATHER CLOUDY COUNTY WOOD
 R.C. RHOADES TEMP. 60° TOWNSHIP WESTON
 _____ SECTION 23
 DWG BY RHOADES PID PVTRAIN T 5 N R 9 E

TYPE MONUMENT P.K./WASHER
 ON SURFACE - ~~BELOW~~ ON
 OFFSET CL PAVEMENT 1.2' LT : ~~RT~~
8.5' TO LT EDGE PAVEMENT
 STATION: 784+22.30



HORZ.DATUM: NAD83 2011 GEOID: NAVD88 2012A
 GRID: NORTHING: 627942.837 EASTING: 1615496.265

RECORD:
 FD P.K./WASHER
 8-27-92, CL
 4-14-00
 FD PK NAIL
 REF37
 8-25-15, JFO
 SET MAG/WASHER
 NEWREFA31
 7-18-16, JLL
 FD MAG/WASHER
 REFA31
 7/8/22, DSA

SET SHI
 46" WILLOW



74.38'

FD
 PK/W



40.60'

48.91'



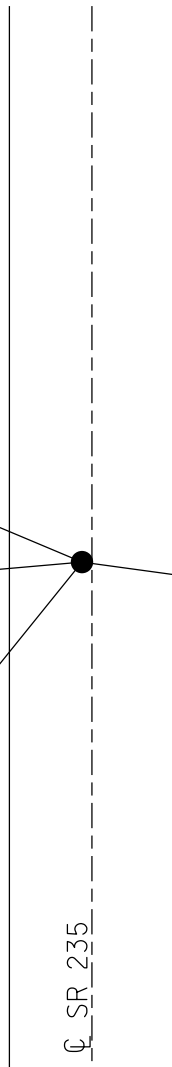
SET TACK
 IN 2X4" POST
 2' UP

32.64'



PK SHI
 SW/S

CL SR 235

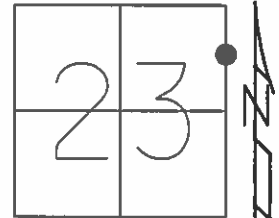


O.D.O.T. DISTRICT 2 SURVEY OFFICE (USE ONLY)

PERSONNEL _____ REFERENCE NO. 31 A SHEET 3 OF 16

NOTES RHOADES DATE 8-26-15 ROUTE SR 235
 H.C. O'DONNELL WEATHER CLOUDY COUNTY WOOD
 R.C. RHOADES TEMP. 60°F TOWNSHIP WESTON
 _____ SECTION 23
 _____ T 5 N R 9 E

TYPE MONUMENT PK/WASHER
 ON SURFACE - ~~BELOW~~ ON _____
 LEFT - ☉ PAV'T - ~~RIGHT~~ 1.2'
8.5' TO LT EDGE PAVEMENT
 S.L.M. 784+22.30



Grid: Northing: 627942.8528 Easting: 1615496.2489

RECORD:
 FD PK/WASHER
 8-27-92, CL

PREVENTIVE MAINTENANCE
 CHIP&SEAL
 EXISTING POINT UNCOVERED
 DATE 4-14-2000

FD PK NAIL
 GPS, REF37

FD PK NAIL
 GPS, REF37
 8-25-15, JFO

SET MAG/WASHER
 GPS, NEWREFA31
 7-18-16, JLL

SET SHI
 46" WILLOW



74.38'

FD
 PK/W

40.60'

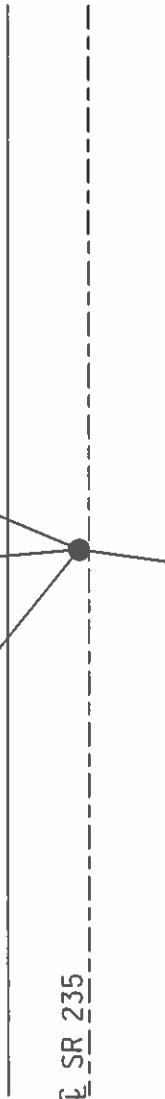
48.91'



SET TACK
 IN 2X4" POST
 2' UP

32.64' PK SHI
 SW/S

☉ SR 235



O.D.O.T. DISTRICT 2 SURVEY OFFICE

PERSONNEL

REFERENCE NO. 31-A

SHEET 2 OF 12

NOTES LOEHRKE

H.C. CURTIS

DATE 6-24-92

ROUTE 235

R.C. ROMETO

WEATHER CLOUDY

COUNTY WOOD

FALKOWSKI

TEMP. 66

TOWNSHIP WESTON

SECTION 23

T. 5 N. R. 9 E.

TYPE MONUMENT P.K./WASHER

Set P.K. WASHER

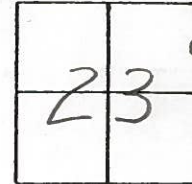
ON SURFACE - BELOW Yes

8-27-92

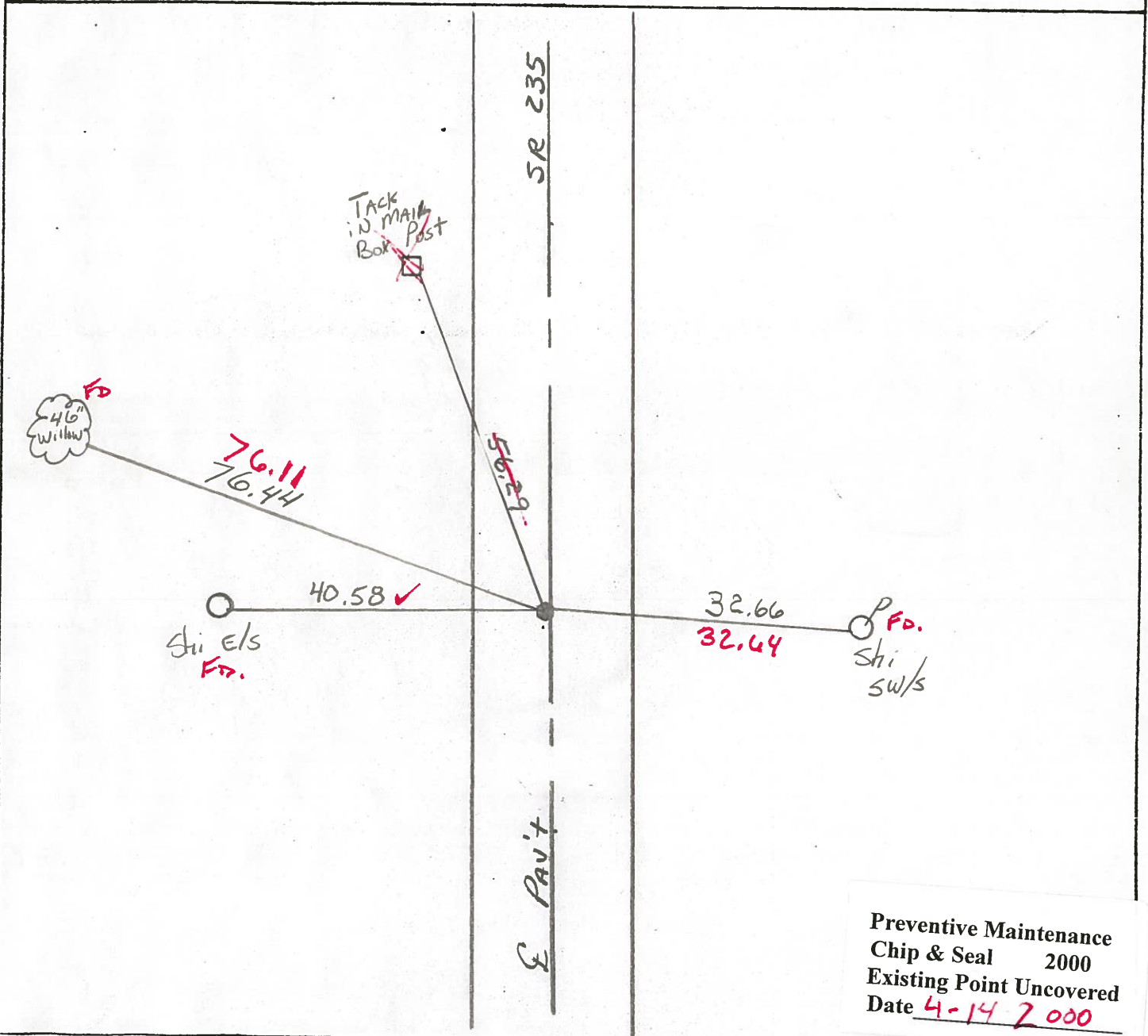
LEFT - CL PAV'T. - RIGHT 0.6'

C.L.

8.5 TO L EDGE PAVEMENT



S.L.M. 784+28



Preventive Maintenance
 Chip & Seal 2000
 Existing Point Uncovered
 Date 4-14-2000

O.D.O.T. DISTRICT 2 SURVEY OFFICE

PERSONNEL

REFERENCE NO. 31A

SHEET _____ OF _____

NOTES Barkisel

H.C. Loehrke

DATE March 18, 1985

ROUTE 235

R.C. Hoffman

WEATHER clear

COUNTY WOOD

TEMP. + 35°

TOWNSHIP Weston

SECTION N 1/4 of N 1/4 sec 24

T. 5 R. 9

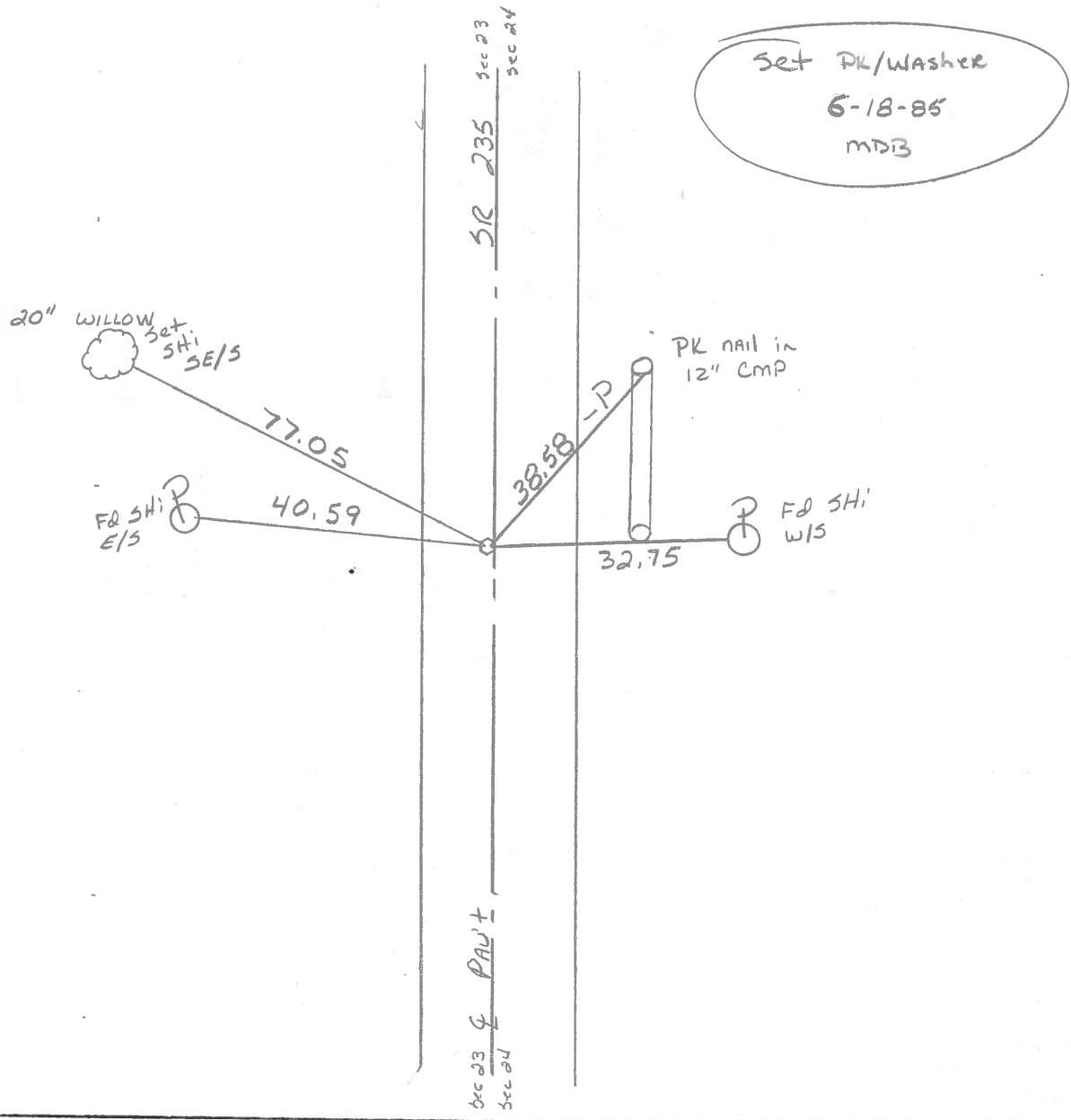
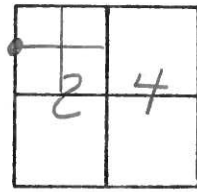
TYPE MONUMENT 5m RR/spk

ON SURFACE - ~~WOOD~~ ✓

LEFT- & PAV'T. - ~~RIGHT~~ 1.0

8.4 TO Lt EDGE PAVEMENT

S.L.M. 784+31



County Wood S.R. 235

Date 5-14-1979

Township Weston

Weather Partly Cloudy

Section N $\frac{1}{4}$ of NW $\frac{1}{4}$ Sec. 24

Temp. 70 $^{\circ}$

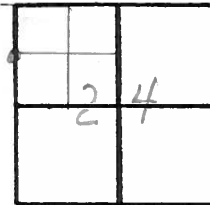
T5N, R9E

Personnel Smith

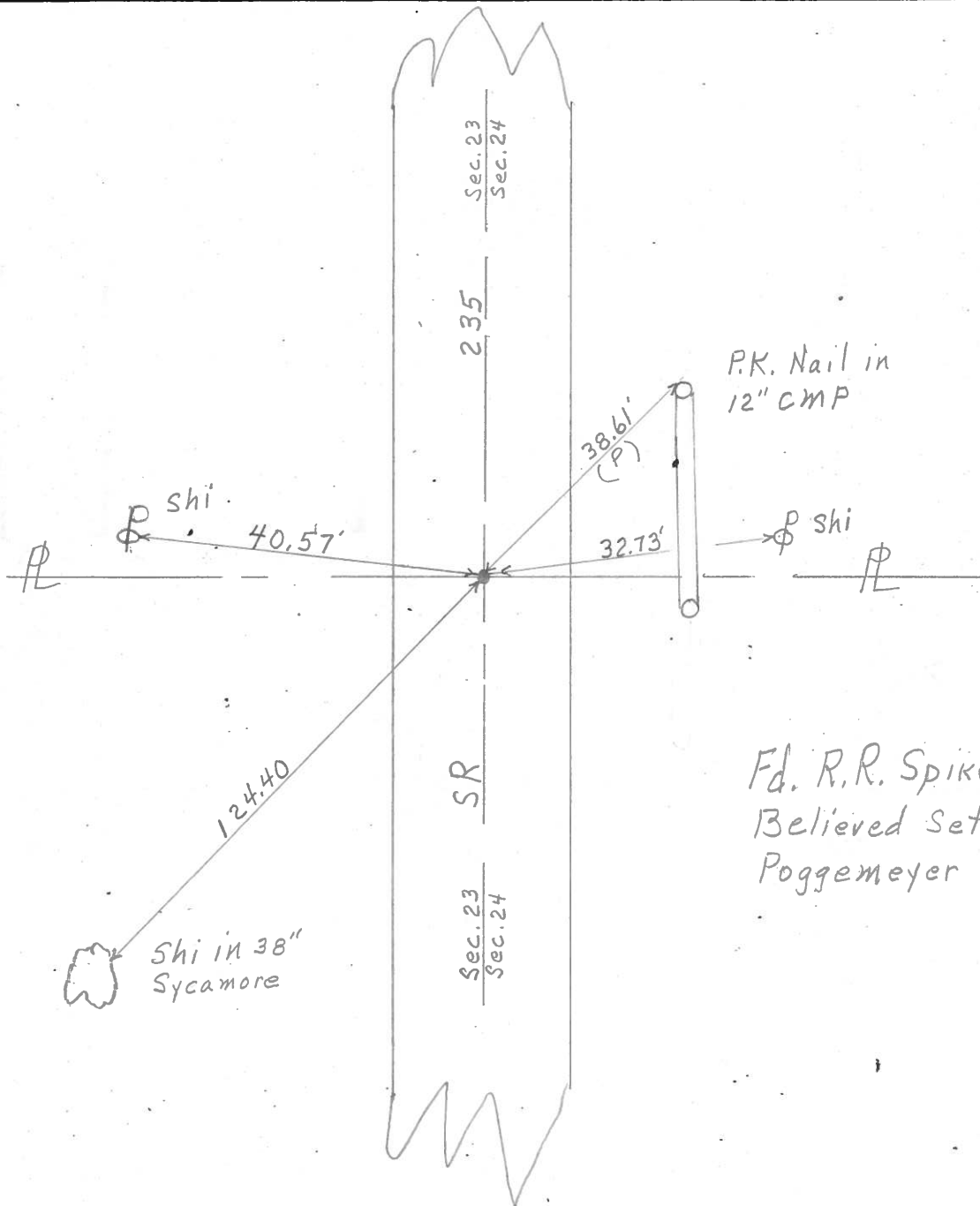
Knape

Bowers

Mead



31A



Fd. R.R. Spike @ Surface
Believed Set by
Poggemeyer B.G.O.

PERSONNEL TITLE PERSONNEL TITLE COUNTY Wood DATE 5-10-76
 BURNSIDE _____ SMITH _____ S. R. 235 WEATHER CLEAR
 MEAD _____ SEC. 23 TEMP. +63°

DESCRIPTION REF. TO SECTION CORNERS LEFT CENTER LINE RIGHT JOB NO.

