

O.D.O.T. DISTRICT 2 SURVEY OFFICE (USE ONLY)

PERSONNEL _____ REFERENCE NO. 39 A SHEET 13 OF 16

NOTES RHOADES DATE 8-26-15 ROUTE SR 235
 H.C. O'DONNELL WEATHER CLOUDY COUNTY WOOD
 R.C. RHOADES TEMP. 60°F TOWNSHIP WASHINGTON
 _____ SECTION 35
 _____ T 6 N R 9 E

TYPE MONUMENT PK/WASHER

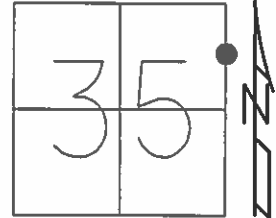
ON SURFACE - ~~BELOW~~ ON _____

~~LEFT~~ - Q PAV'T - RIGHT 2.0'

7.3' TO RT EDGE PAVEMENT

S.L.M. 992+66.24

Grid: Northing: 648784.313 Easting: 1615780.534



RECORD:
 FD PK/WASHER
 8-27-92, CL

PREVENTIVE MAINTENANCE
 CHIP&SEAL
 EXISTING POINT UNCOVERED
 DATE 4-14-2000

FD PK/WASHER
 GPS, REF47
 10-24-14

FD PK/WASHER
 GPS, REF47
 8-25-15, JFO

SET MAG/WASHER
 GPS, NEWREFA39
 7-18-16, JLL

FD SHI
 STUB POLE
 SE/S

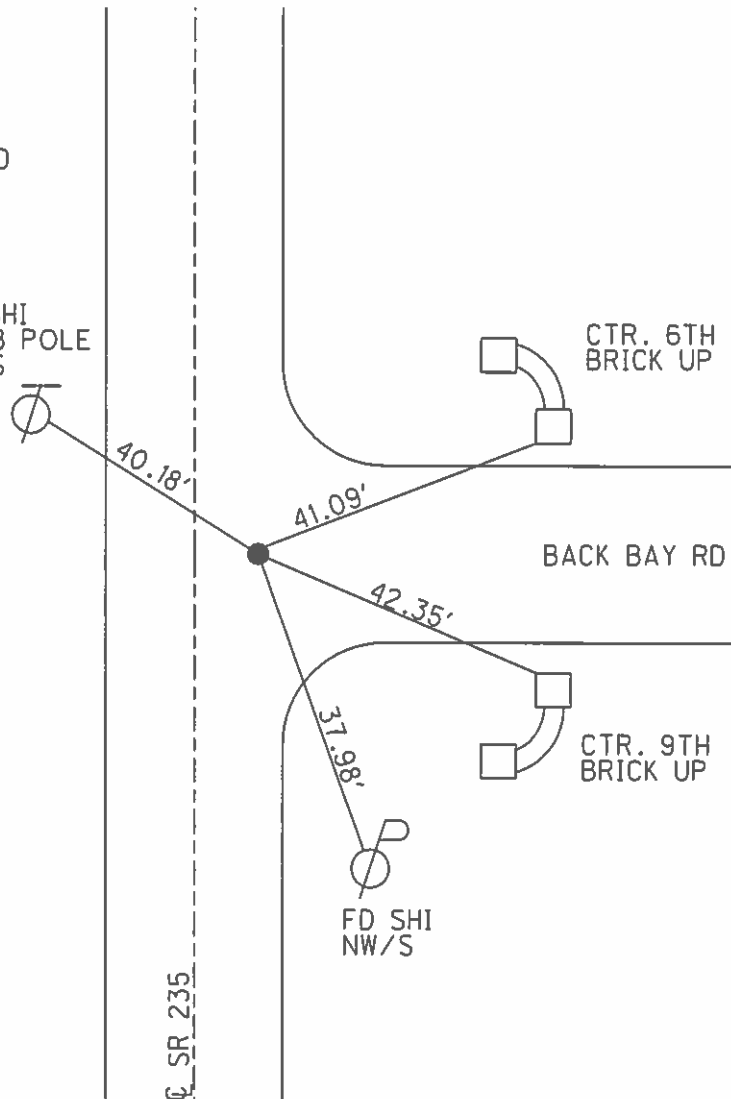
CTR. 6TH
 BRICK UP

BACK BAY RD.

CTR. 9TH
 BRICK UP

FD SHI
 NW/S

Q SR 235



O.D.O.T. DISTRICT 2 SURVEY OFFICE

PERSONNEL

REFERENCE NO. 39-A

SHEET 11 OF 12

NOTES Loehrke

H.C. Curtis

R.C. Romero

Falkowski

DATE 6-22-92

WEATHER pt Cloudy

TEMP. +70

ROUTE 235

COUNTY WOOD

TOWNSHIP WASHINGTON

SECTION 35

T 6 N R 9 E

TYPE MONUMENT P.K./WASHER

ON SURFACE - ~~BELOW~~ yes

~~LEFT~~ - RIGHT - 2.0

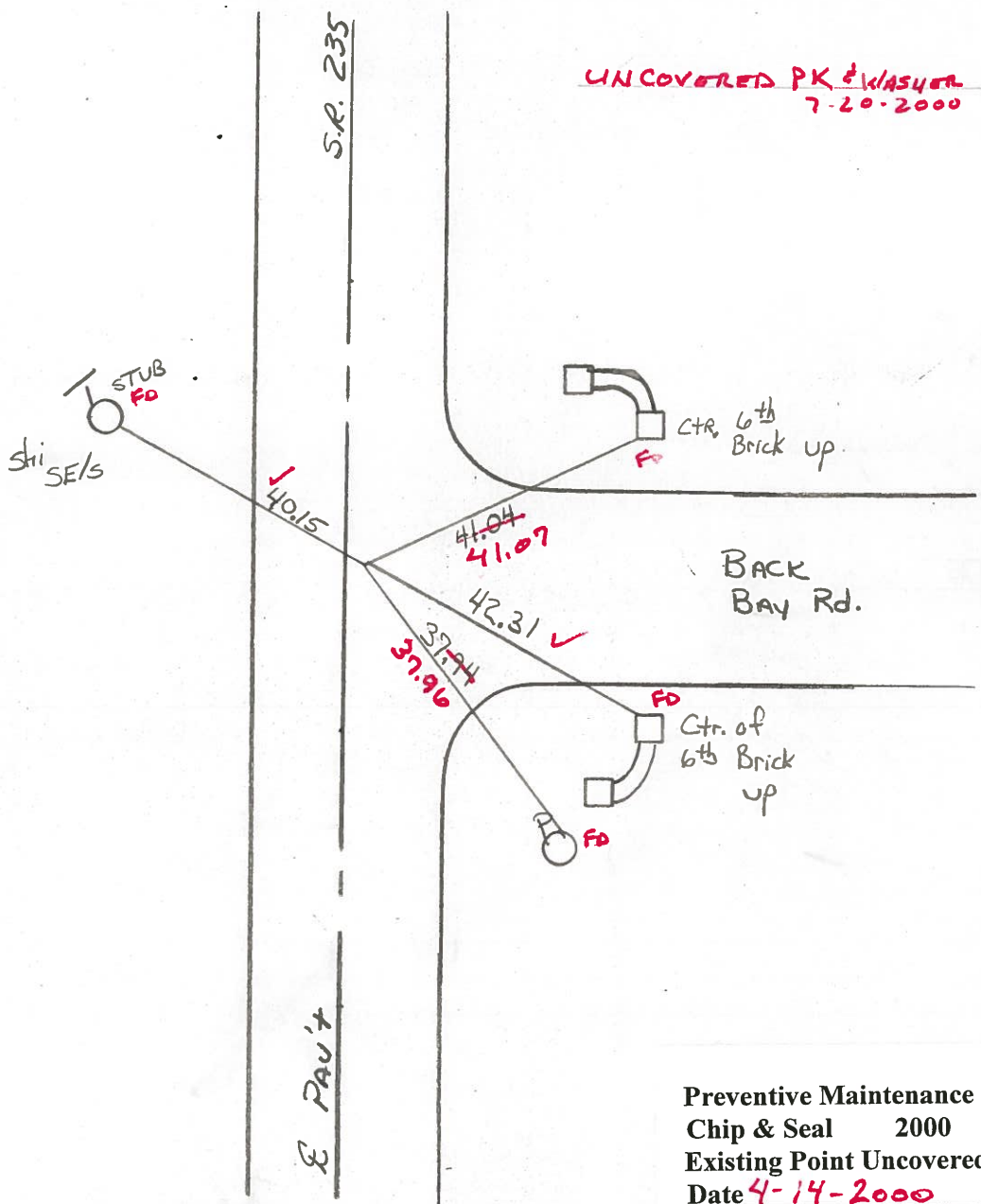
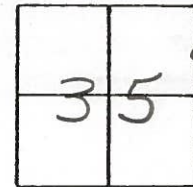
73 TO RT EDGE PAVEMENT

S.L.M. 993+68

Set P.K. & WASHER

8-27-92

C.L.



Preventive Maintenance
 Chip & Seal 2000
 Existing Point Uncovered
 Date 4-14-2000

O.D.O.T. DISTRICT 2 SURVEY OFFICE

PERSONNEL

NOTES Barnhiser
 H.C. Loehcke
 R.C. Hoffman

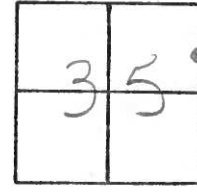
REFERENCE NO. 39A

DATE March 18, 1985
 WEATHER clear - cold
 TEMP. +35°

SHEET _____ OF _____

ROUTE 235
 COUNTY WOOD
 TOWNSHIP Washington
 SECTION 35
 T. 5 R. 9

TYPE MONUMENT P/R NAIL
 ON SURFACE - ~~BELOW~~ ✓
~~PAV'T.~~ - PAV'T. - RIGHT 2.0
10.9 TO LEFT EDGE PAVEMENT
 S.L.M. 992+80



Set PK/Washer
6-18-85
MDB

