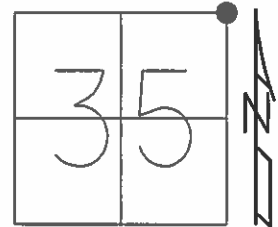


O.D.O.T. DISTRICT 2 SURVEY OFFICE (USE ONLY)

PERSONNEL _____ REFERENCE NO. 39 B SHEET 14 OF 16
 NOTES RHOADES DATE 4-20-15 ROUTE SR 235
 H.C. WESTFALL WEATHER WINDY COUNTY WOOD
 R.C. O'DONNELL TEMP. 58°F TOWNSHIP WASHINGTON
 _____ SECTION 35
 _____ T 6 N R 9 E

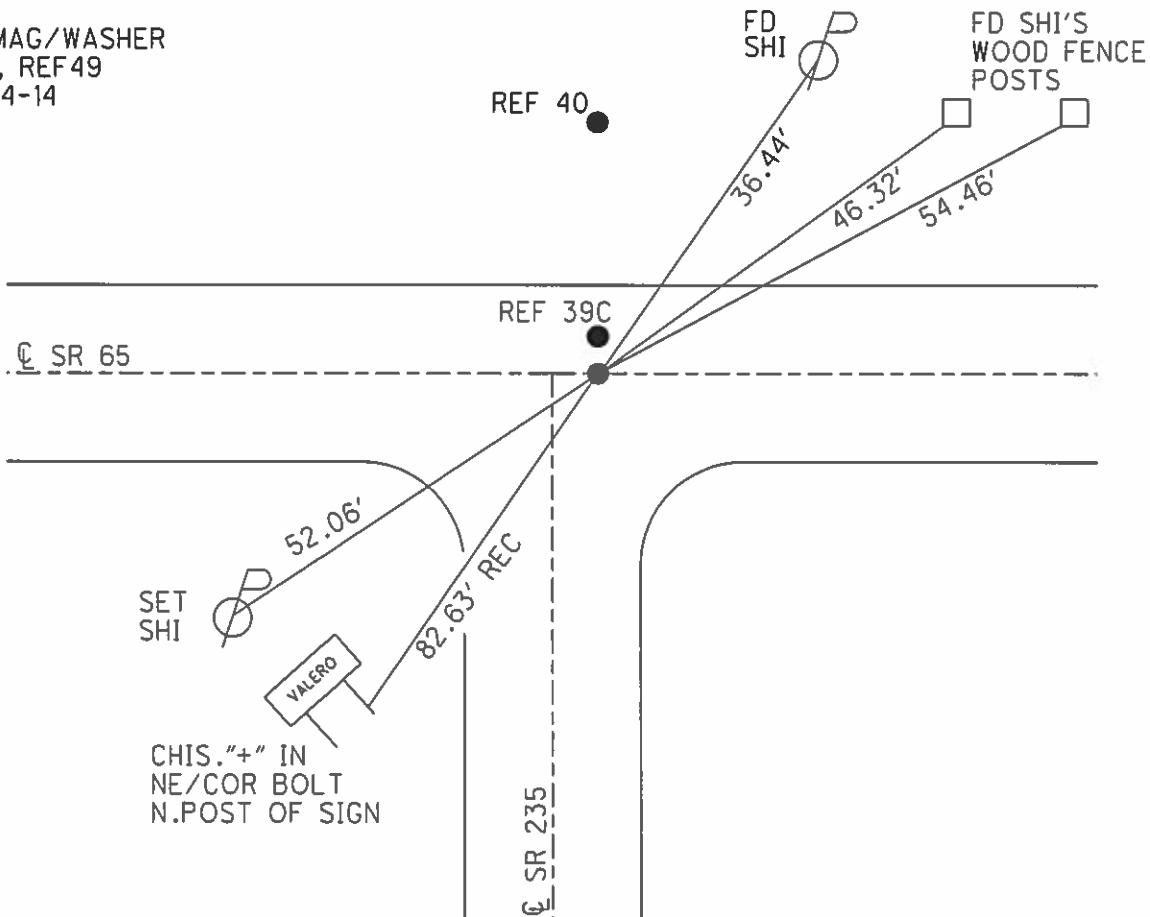
TYPE MONUMENT PK/WASHER
 ON SURFACE - ~~BELOW~~ ON
~~LEFT~~ - Q PAV'T - RIGHT ON
 _____ TO _____ EDGE PAVEMENT
 S.L.M. 1008+81.21
 Grid: Northing: 650399.191 Easting: 1615800.485



RECORD:
 UNKNOWN
 ORIGIN
 4-17-92

DIST.
 39B-39C= 2.15'
 39B-40= 24.94'

FD MAG/WASHER
 GPS, REF49
 10-24-14



NOTE: REF 12 I ON SR 65

O.D.O.T. DISTRICT 2 SURVEY OFFICE

PERSONNEL

REFERENCE NO. 40

SHEET 12 OF 12

NOTES BAARNHISEL

H.C. CURTIS

DATE 4-17-92

ROUTE 235

R.C. VAN DUSEN

WEATHER RAIN

COUNTY WOOD

Lochree

TEMP. +50°

TOWNSHIP WASHINGTON

Romero

SECTION 35

T. 6 N. R. 9 E

TYPE MONUMENT PT "B" PK (SHANK)

PT "C"

ON SURFACE - BELOW YES

yes

LEFT- & PAV'T. - RIGHT 2.2

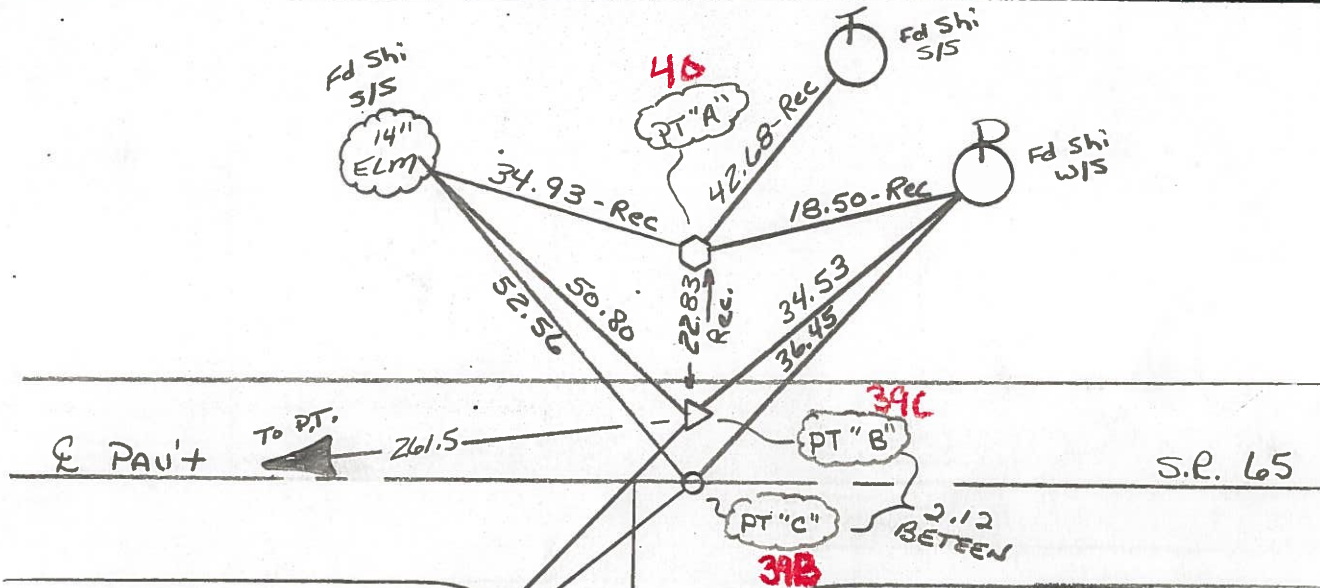
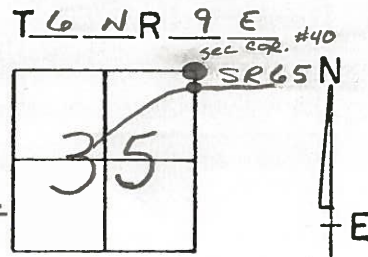
ON &

2.5 TO LT EDGE PAVEMENT

9.8 TO LT Edge

S.L.M.

5.5 EAST OF & SOUTH



RECORD:

POINT "B"

P.I. 210+24.6

FROM CONST. PLAN

1923-1924

$\Delta = 6^{\circ} - 05' RT$

$D = 4^{\circ} - 0'$

$R = 1432.69$

$T = 76.12$

$E = 2.02 (FIG.)$

NOTE: POINT "A"

NE COR. SEC 35

WASHINGTON TWP.

T-6-N A-9-E

HAS BEEN DESTROYED

BY CONSTRUCTION IN

THIS AREA / HAS NOT

BEEN RESET AS OF

4-17-92

PT. "C" - ORIGIN UNKNOWN

PERSONNEL	TITLE	PERSONNEL	TITLE

COUNTY	Wood	DATE	OK 12-16-57
S. R.	#69	WEATHER	OK 1-25-58
SEC.		TEMP.	

DESCRIPTION LEFT CENTER LINE RIGHT JOB NO.

#96
 Stone 40.02' E. of stone #98 or S.E. cor. sec. 35 Washington Twp. Scott Ed. (Did not find 12-16-57)
 7-31-69
 x N.E. cor. of N. masonry Hdwl. NW 22.8
 x S.E. cor. of S. masonry Hdwl. SW 22.5
 SW. " " " " " " 32.17
 Cor. Stone iron pipe on top 40.02

#97 38A
 Stone S.E. cor. sec. 35 Washington Twp. Scott Ed. Fe. Pipe 1-25-58
 Dug an Fe. stone below surface set iron pipe on top 7-31-69
 x N. End Conc. Hdwall NE 2298 25.33
 x N.E. cor. of masonry Hdwl. NE 25.18
 S.E. cor. S. masonry Hdwl. SE No. 23.2
 Fe. Stone E. of cor. 40.02
 Fe. pipe N.E. of cor. Stone 31.65
 Fe. Pipe 6" W. of Fe. pipe jct.
 Fe. Pipe } + N.E. cor. N. masonry Hdwl. N.E. 25.33 24.51
 Scott Ed. } + S.W. cor. S. masonry Hdwl. S.E. 15.30 18.08
 " + ctr. conc. Hdwl. S.W. - Plum bet 30.82
 30.18

#99
 P.R. spike Intersection S.R. #69 & S.R. #65 Set Copper Weld Marker 9/24/59 #100 See Sheet #1-7 S.R. #65
 39B
 Shiner in T.P. S.W. 48.38
 Shiner in 14" Box Elder N.N.E. 47.45
 Shiner in 24" Hackberry stump S.E. 74.55
 Shiner in 6" tree NW 51.12
 Shiner P. Pole N.E. 32.95
 Shiner 12" Elm N.N.W. 51.12
 Shiner 12" Chi. Elm N.W. 63.90

PERSONNEL	TITLE	PERSONNEL	TITLE

COUNTY Wood DATE OK 12-16-57
OK 1-25-66
 S. R. #69 WEATHER _____
 SEC. _____ TEMP. _____

DESCRIPTION LEFT CENTER LINE RIGHT JOB NO.

DESCRIPTION	LEFT	CENTER LINE	RIGHT	JOB NO.
	#96			
Stone - 40.02' E. of Stone #98 or S.E. cor. sec. 35 Washington Twp. Scott Ed? (Did not find 12-16-57)			N.E. cor. of N. masonry Hdwl. N.W. 22.8 S.E. cor. of S. masonry Hdwl. S.W. 22.5	
	#97	38A		
Stone - S.E. cor. sec. 35 Washington Twp. Scott Ed? Fd. I. Pipe 1-25-66			N.E. cor. N. masonry Hdwl. N.E. 25.18 S.E. cor. S. masonry Hdwl. S.E. 23.20 Fd. stone E. of cor. 40.02 I. pipe N.E. of cor. Stone 0.65 Fd. I. pipe 6' W. of E. edge put.	
	#98	38		
			Fd. I. pipe } + N.E. cor. N. masonry Hdwl. N.E. 24.51' Scott Ed. } + S.W. cor. S. masonry Hdwl. S.E. 15.08' } + Ctr. cone. Hdwl. S.W. - Plumb - 30.82'	
	#99			
R.R. spike - Intersection S.R. #69 & S.E. #65 Set Copper Weld Marker 4/24/59 See Sheet #1-7 S.E. #65			Shiner in T.P. S.W. 48.38' Shiner in 14" Box Elder N.E. 47.45' Shiner in 24" Hackberry stump S.E. 74.55' Shiner in 6" tree N.W. 51.12' Shiner P. Pole N.E. 32.98' Shiner 12" Elm N.N.W. 51.12' Shiner 12" Chi. Elm. N.W. 63.90'	
	#100	39B		