

W00-281-14.08

PROPOSED STRUCTURE
 Type: Continuous Reinforced Concrete Slab on Capped Pile Abutments & Piers
 Spans: 20'-0", 25'-0", 20'-0" 96 bearings
 Roadway: 36'-0" F/Guard Rail & % Slab
 Load Frequency: CF 130 (57)
 Skew: 12°-00' Left Forward
 Wearing Surface: 1" Monolithic Concrete
 Approach Slabs: AS-154 (25'-0" Long)
 Alignment: Tangent

TYPICAL SECTION OF ADJOINING PAVEMENT

601-Dumped Rock Channel Protection
 Sta. 749+15 to 749+26 Lt. ~ 4.0 Cu. Yd.
 Sta. 749+51 to 749+62 Lt. ~ 4.0 Cu. Yd.

CHARLES A. POTTER
 ③ Cont. 0.44 Ac.±
 P.R.O. 0.69 Ac.±
 ③-T Cont. 0.11 Ac.±

EXISTING STRUCTURE DATA
 Type: Steel beam with timber deck on concrete gravity abutments
 Span: 21'-3" Clear
 Roadway: 20'-5"
 Skew: None
 Condition: Critical, emergency repairs Apr. 1965
 Drainage Area: 17.19± Sq. Mi.
 Loading: H-34 (20% load reduction)
 Date Built: Superstructure rebuilt on existing abutments, 1935

See Calculations on Sheet 3 for inter-section quantities
 Sta. 748+27, Lt. Type 2 Driveway; L=40', W=12'
 G~304 ~ 16.3 Cu. Yd.
 42"~12" Conduit, Type D
 26"~6" Pipe Removed

Sta. 745+48, Rt. Type 1 Driveway; L=30', W=12'
 G~304 ~ 11.6 Cu. Yd.
 46"~30" Conduit, Type D
 26"~30" Pipe Removed
 (Removal of Headwalls included for payment in Item 202, Pipe Removed, Over-15")

Sta. 750+37, Rt. Type 2 Driveway; L=50', W=12'
 G~304 ~ 18.5 Cu. Yd.
 54"~24" Conduit, Type D
 40"~12" Pipe Removed

CHARLES N. BLASIUS
 ARVILLA BLASIUS
 ④ Cont. 0.68 Ac.±
 P.R.O. 0.68 Ac.±
 ④-T Cont. 0.09 Ac.±

End Project
 End Typ. Sec. Sta. 755+00
 S.L.M. = 14.29

End Work
 Sta. 755+25

PORTAGE TWP., WOOD CO.
 T4N R11E

B.M. # 10
 100' of steel sign post
 274 Lt. Sta. 754+01
 Elev. 681.66

DALE TYSON
 GENEVIEVE A. TYSON

DALE TYSON
 GENEVIEVE A. TYSON
 Cont. 0.07 Ac.±
 P.R.O. 0.13 Ac.±

Begin Project
 Begin Typ. Sec. Sta. 743+75
 S.L.M. = 14.08

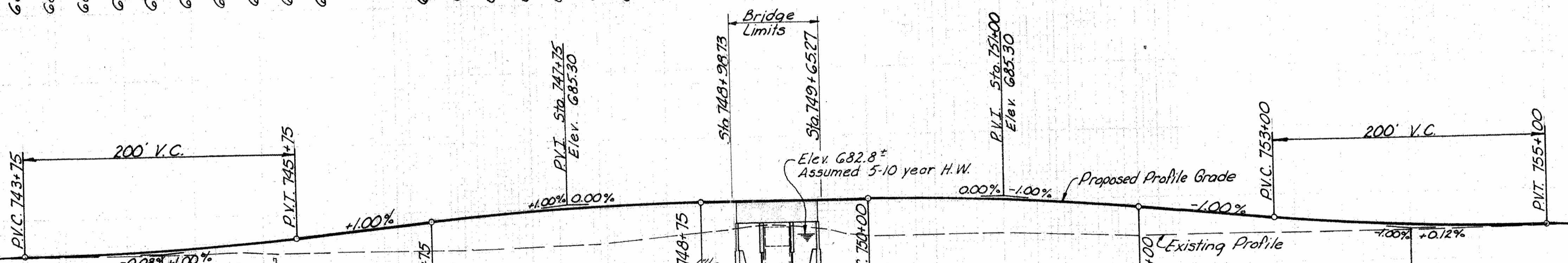
Begin Work
 Sta. 743+50

- 682.38
- 682.37
- 682.41
- 682.47
- 682.57
- 682.70
- 682.87
- 683.07
- 683.30
- 683.55

- 684.30
- 684.53
- 684.74
- 684.91
- 685.05
- 685.16
- 685.24
- 685.28
- 685.30
- 685.30

- 685.30
- 685.28
- 685.24
- 685.16
- 685.05
- 684.91
- 684.74
- 684.53
- 684.30

- 683.30
- 683.07
- 682.87
- 682.70
- 682.58
- 682.48
- 682.43
- 682.40
- 682.42



NOTE: Alignment and Grade remain constant for several miles East & West of structure.

SUMMARY OF ADDITIONAL R/W REQUIRED

Parcel No.	Owner	Deed Record		Deed Area (Acres)	To Be Acquired (Residue/Acres)	
		Book	Page		Land	Bldgs. Left Right
2	Dale & Genevieve A. Tyson	323	275	80	0.07	79.9
3	Charles A. Potter	195	581	240	0.44	238.9
3-T	" " "				0.11	
4	Charles N. & Arvilla Blasius	323	277	98.67	0.68	97.3
4-T	" " "				0.09	

BEGIN SHEET STA 742+00

END SHEET STA 757+00

R8281 484

682.6 742
 682.5 743
 682.2 744
 682.24 745
 682.15 746
 682.12 747
 682.13 748
 682.16 749
 682.20 750
 682.18 751
 682.16 752
 682.12 753
 682.20 754
 682.23 755
 682.23 756
 682.25 757
 Sta. 742+00 to Sta. 757+00