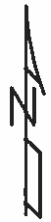
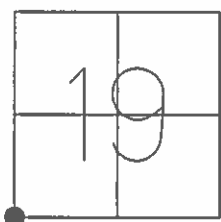


O.D.O.T. DISTRICT 2 SURVEY OFFICE (USE ONLY)

PERSONNEL _____ REFERENCE NO. 2 SHEET 2 OF 15

NOTES HOMAN DATE 7/2/12 ROUTE SR 281
 H.C. ROUSOS WEATHER SUNNY COUNTY WOOD
 R.C. HOMAN TEMP. 75° TOWNSHIP MILTON
 SECTION 19
T 4 N R 9 E

TYPE MONUMENT LG.R.R.SPIKE
 ON SURFACE - ~~BELOW~~ ON
 LEFT - ☉ PAV'T - ~~RIGHT~~ 42.6'
TO EDGE PAVEMENT (ON E/EP NORTH)
 S.L.M. 0+00

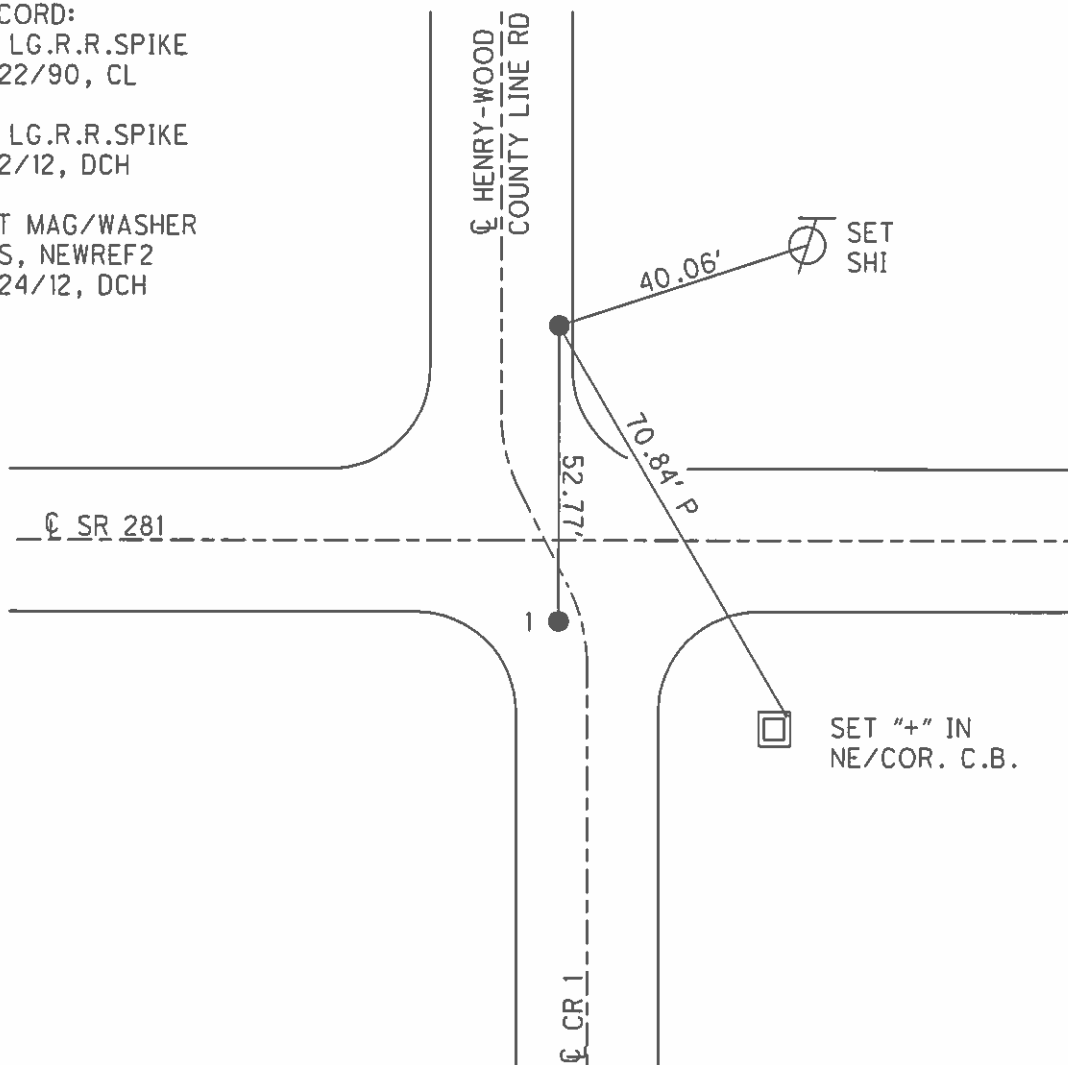


GRID: NORTHING: 592365.027 EASTING: 1588509.995

RECORD:
 FD LG.R.R.SPIKE
 5/22/90, CL

FD LG.R.R.SPIKE
 7/2/12, DCH

SET MAG/WASHER
 GPS, NEWREF2
 9/24/12, DCH



O.D.O.T. DISTRICT 2 SURVEY OFFICE

PERSONNEL

REFERENCE NO. 112

SHEET OF

NOTES BARNHISEL

H.C. Loehke

DATE 5-22-90

ROUTE 281

R.C. HOFFMAN

WEATHER WINDY

COUNTY Wood

TEMP. +62°

TOWNSHIP MILTON

SECTION 19

T 4 N R 9 E

TYPE MONUMENT PT "A" Sm RR Spk PT "B" Lg RR Spk

ON SURFACE - ~~BELOW~~ yes yes

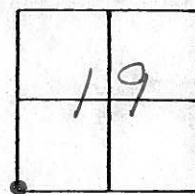
LEFT - C PAV'T. - RIGHT 10.3 RT 42.6 LT &

- TO - EDGE PAVEMENT

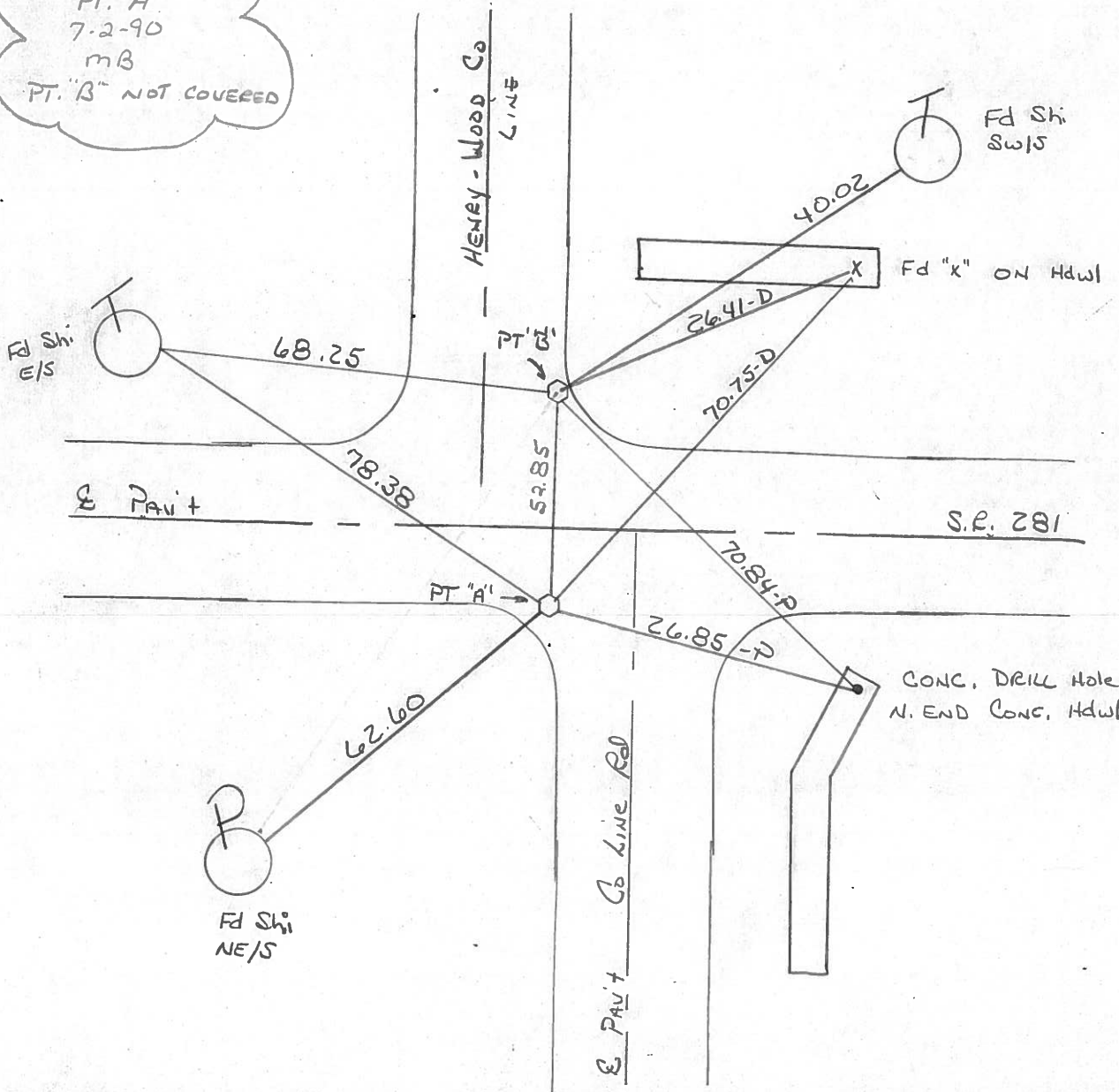
S.L.M. 0+00

PT "A" ON W. Edge Pav't South

PT "B" ON E. Edge Pav't North



Set Sm RR Spk
PT. "A"
7-2-90
mB
PT. "B" NOT COVERED



O.D.O.T. DISTRICT 2 SURVEY OFFICE

SHEET OF

County Wood S.R. 281

Date 5-19-81 8-24-81

Township MILTON

Weather cloudy - windy

Section 19

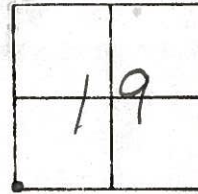
Temp. 55° 75°

T4N, R9E

Personnel S. Hoffmann

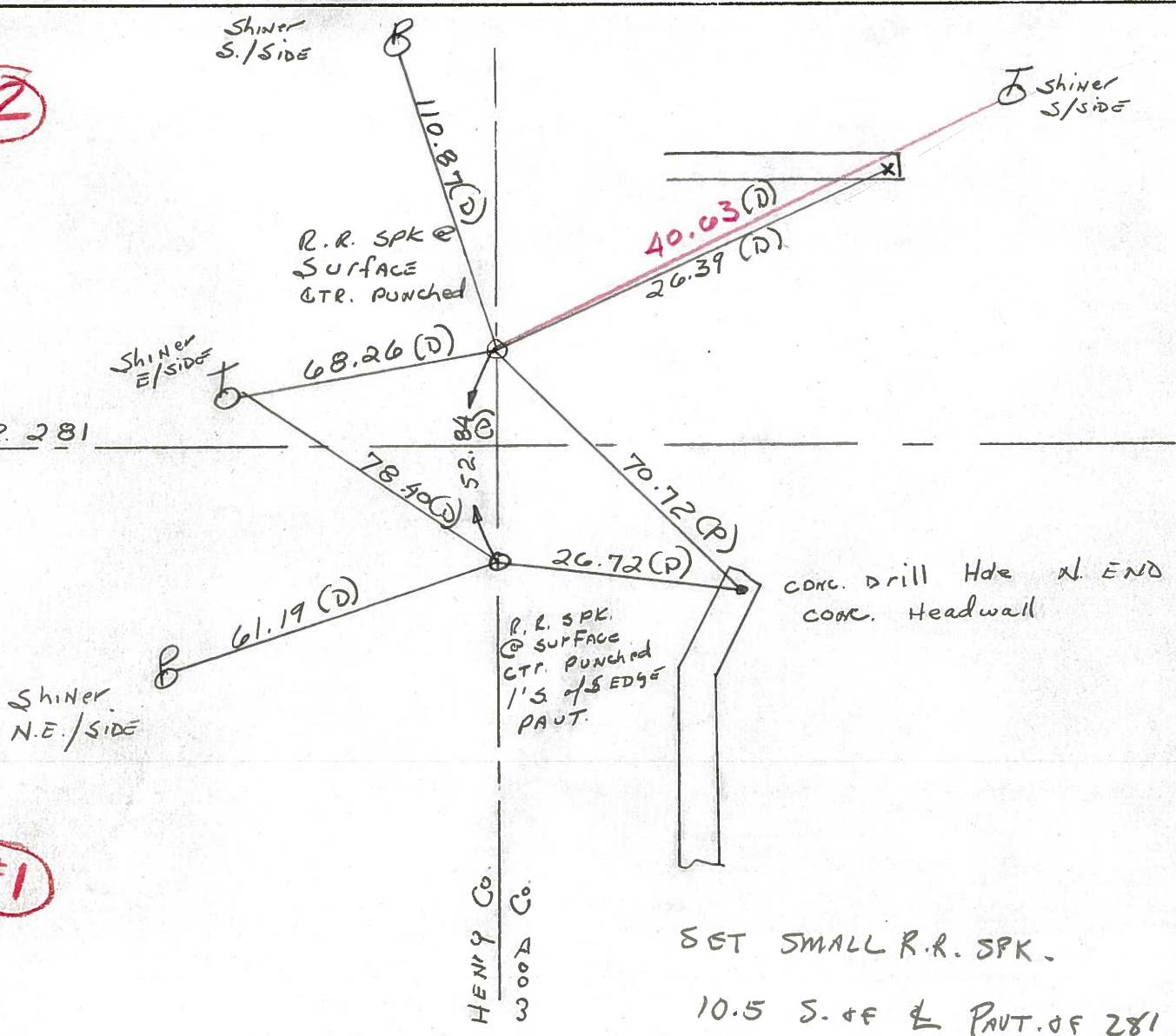
G. Loehrke

J. Householder



#2

S.R. 281



#1

NOTE:
RE-COPIED
1-19-70

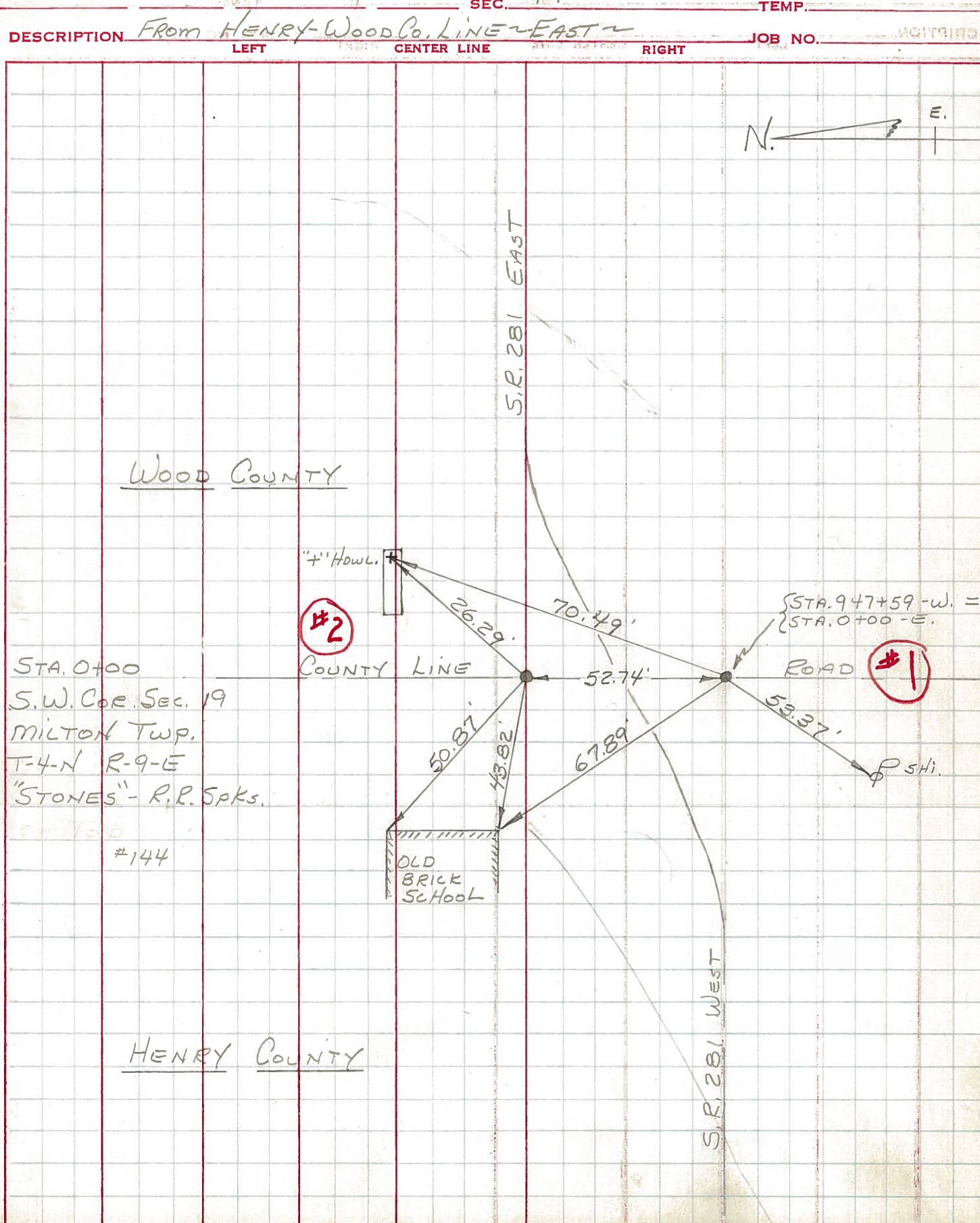
PERSONNEL TITLE PERSONNEL TITLE COUNTY WOOD DATE OK-11-18-7

CK. BY BURNSIDE S. R. # 281 WEATHER

HOFFMAN SEC. 19 TEMP.

DESCRIPTION From Henry-Wood Co. Line ~ East ~ JOB NO.

LEFT CENTER LINE RIGHT



PERSONNEL TITLE PERSONNEL TITLE

COUNTY Wood

DATE OK 12-2-57

S. R. # 281

WEATHER 11-3-60 Knaps

SEC. D, E, F & G.

TEMP. 2-28-64

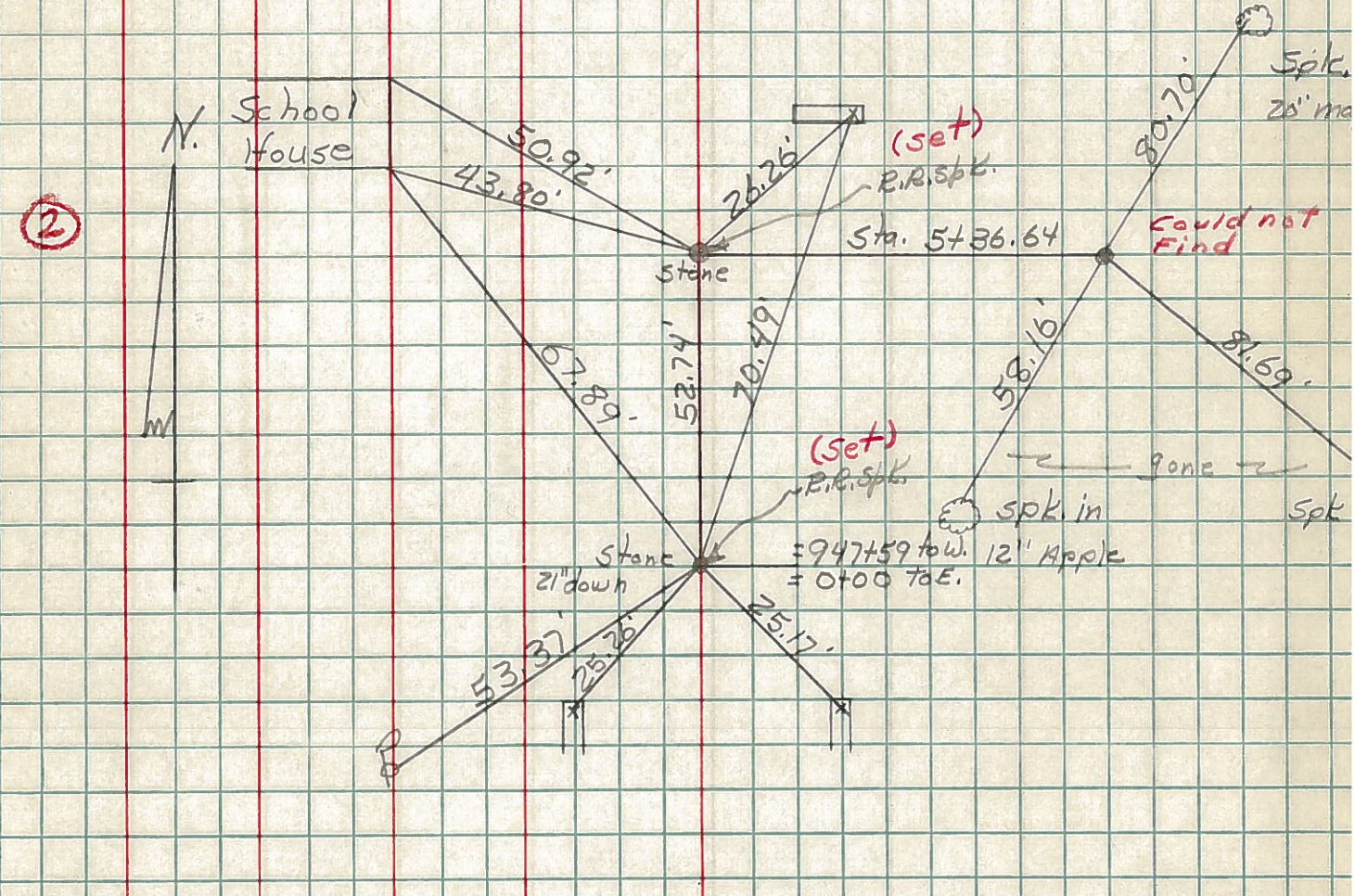
DESCRIPTION From Henry-Wood Co. line East.

JOB NO.

LEFT CENTER LINE RIGHT

Sta. 0+00	X on N. end W. Hdwl.	S.W.	76.
S.W. cor. sec. 19 Milton	S. bolt of pump	N.W.	61.9
Twp. Wood & Henry Co.	Bottom brick N.E. Cor	brick	50.0
Lines. Stone		W.	50.0
	Bottom brick S.E. Cor.	brick	50.0
		W.	43.0

① #144



Sta. 26+00.8 (old)	Shiner in T.P.	28.0
Did not find (12-2-57)	Spike in L.P.	92.0
	Shiner in Cor. P.	28.6

③ #145

Set Shiner on A 26+00.8 from West
 " " " " " " East

Note - overlap of 7.35'