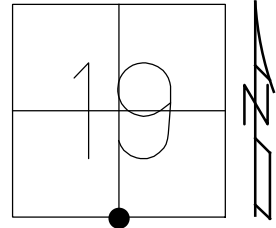


O.D.O.T. DISTRICT 2 SURVEY OFFICE (USE ONLY)

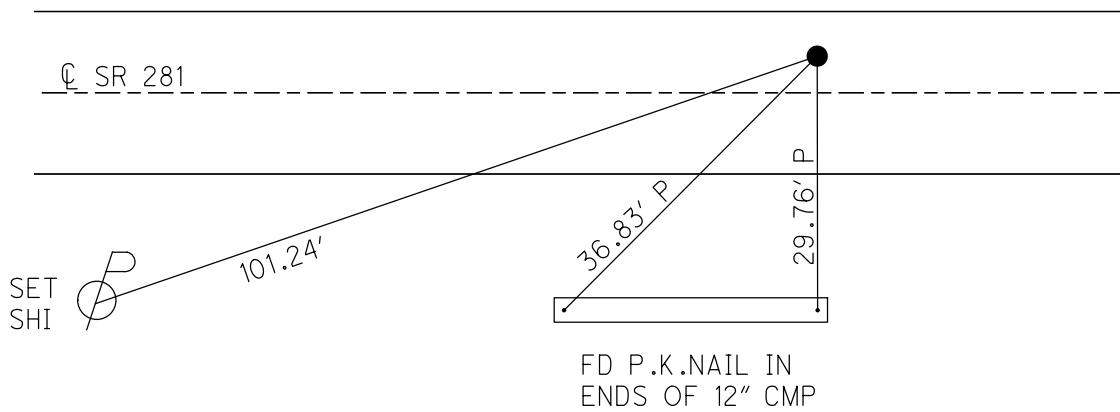
PERSONNEL _____ REFERENCE NO. 3 SHEET 3 OF 15
 NOTES NIESE DATE 2/10/23 ROUTE SR 281
 H.C. AUBLE WEATHER CLOUDY COUNTY WOOD
 R.C. MILLER TEMP. 39° TOWNSHIP MILTON
 _____ SECTION 19
 DWG BY RHOADES PID CHIP SEAL T 4 N R 9 E

TYPE MONUMENT MAG SHANK
 ON SURFACE - ~~BELOW~~ ON _____
 OFFSET \odot PAVEMENT 4.5' LT : ~~RT~~
5.2' TO LT EDGE PAVEMENT
 STATION: 26+03



HORZ. DATUM: NAD83 2011 GEOID: NAVD88 2018
 GRID: NORTHING: 592419.531 EASTING: 1591108.961

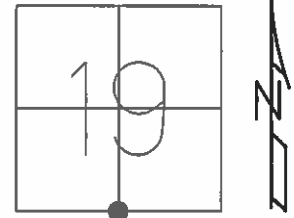
RECORD:
 FD SM.R.R.SPIKE
 5/22/90, CL
 SET SM.R.R.SPIKE
 7/2/90, MB
 FD SM.R.R.SPIKE
 7/2/12, DCH
 SET MAG/WASHER
 NEWREF3
 9/25/12, DCH
 FD MAG SHANK
 REF3
 7/15/22, DSA
 2/10/23, TDN



O.D.O.T. DISTRICT 2 SURVEY OFFICE (USE ONLY)

PERSONNEL _____ REFERENCE NO. 3 SHEET 3 OF 15
 NOTES HOMAN DATE 7/2/12 ROUTE SR 281
 H.C. ROUSOS WEATHER SUNNY COUNTY WOOD
 R.C. HOMAN TEMP. 75° TOWNSHIP MILTON
 _____ SECTION 19
 _____ T 4 N R 9 E

TYPE MONUMENT SM.R.R.SPIKE
 ON SURFACE - ~~BELOW~~ ON
 LEFT - CL PAV'T - ~~RIGHT~~ 4.5'
5.2' TO LT EDGE PAVEMENT
 S.L.M. 26+03



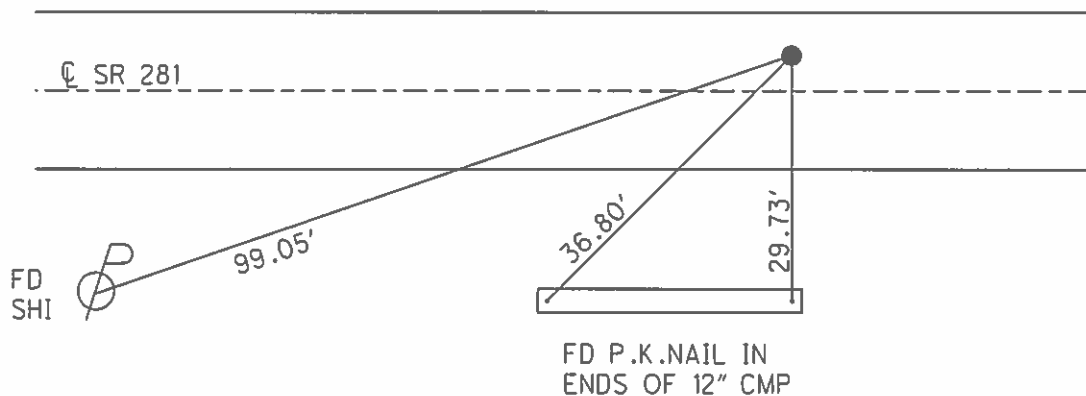
GRID: NORTHING: 592419.604 EASTING: 1591108.879

RECORD:
 FD SM.R.R.SPIKE
 5/22/90, CL

SET SM.R.R.SPIKE
 7/2/90, MB

FD SM.R.R.SPIKE
 7/2/12, DCH

SET MAG/WASHER
 GPS, NEWREF3
 9/25/12, DCH



O.D.O.T. DISTRICT 2 SURVEY OFFICE

PERSONNEL _____

REFERENCE NO. 3

SHEET _____ OF _____

NOTES BARNHISEL

H.C. Loehake

DATE 5-22-90

ROUTE 281

R.C. HOFFMAN

WEATHER WINDY

COUNTY WOOD

TEMP. +62°

TOWNSHIP MILTON

SECTION 19

T 4 N R 9 E

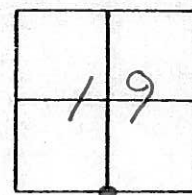
TYPE MONUMENT Sm RR Spk

ON SURFACE - ~~BELOW~~ yes

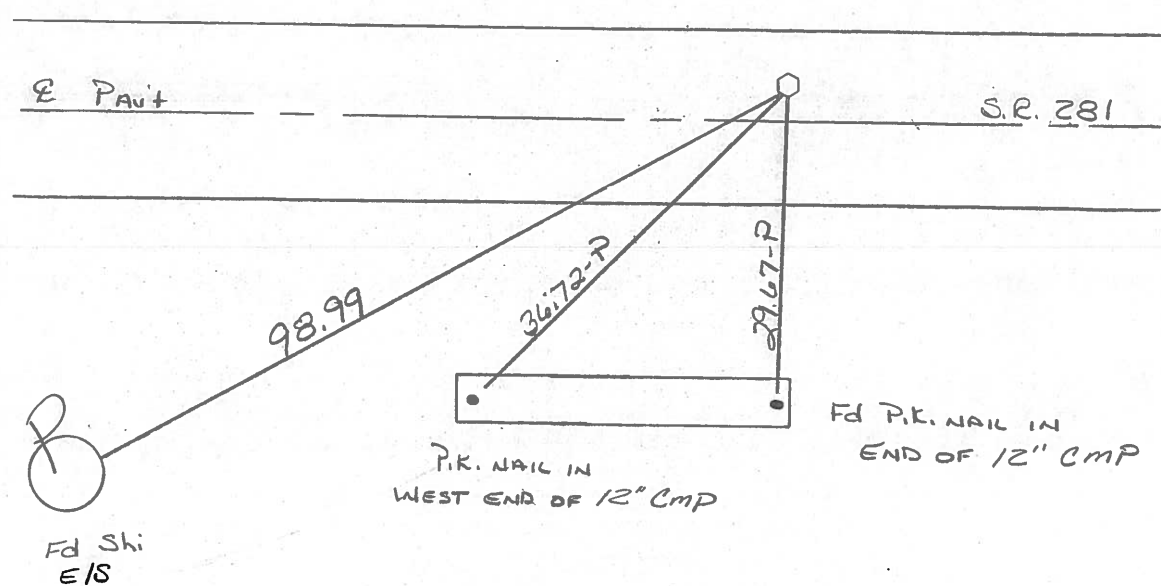
LEFT - ℄ PAV'T. - ~~RIGHT~~ 4.5

5.2 TO LT EDGE PAVEMENT

S.L.M. 26+03



Set Sm RR Spk
7-2-90
MB



ODOT. DISTRICT 2 SURVEY OFFICE

Sht. ___ of ___

County Wood S.R. 281

Date 7-14-81 8-20-81

Township Milton

Weather clear ✓

Section 19

Temp. +68° +80°

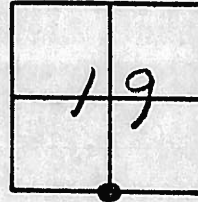
T4N, R9E

Personnel Hoffman

Householder

Loehrke

#3



Fd. Small Nail 2" Below Surface

PROJECT STA ± 26+00.8

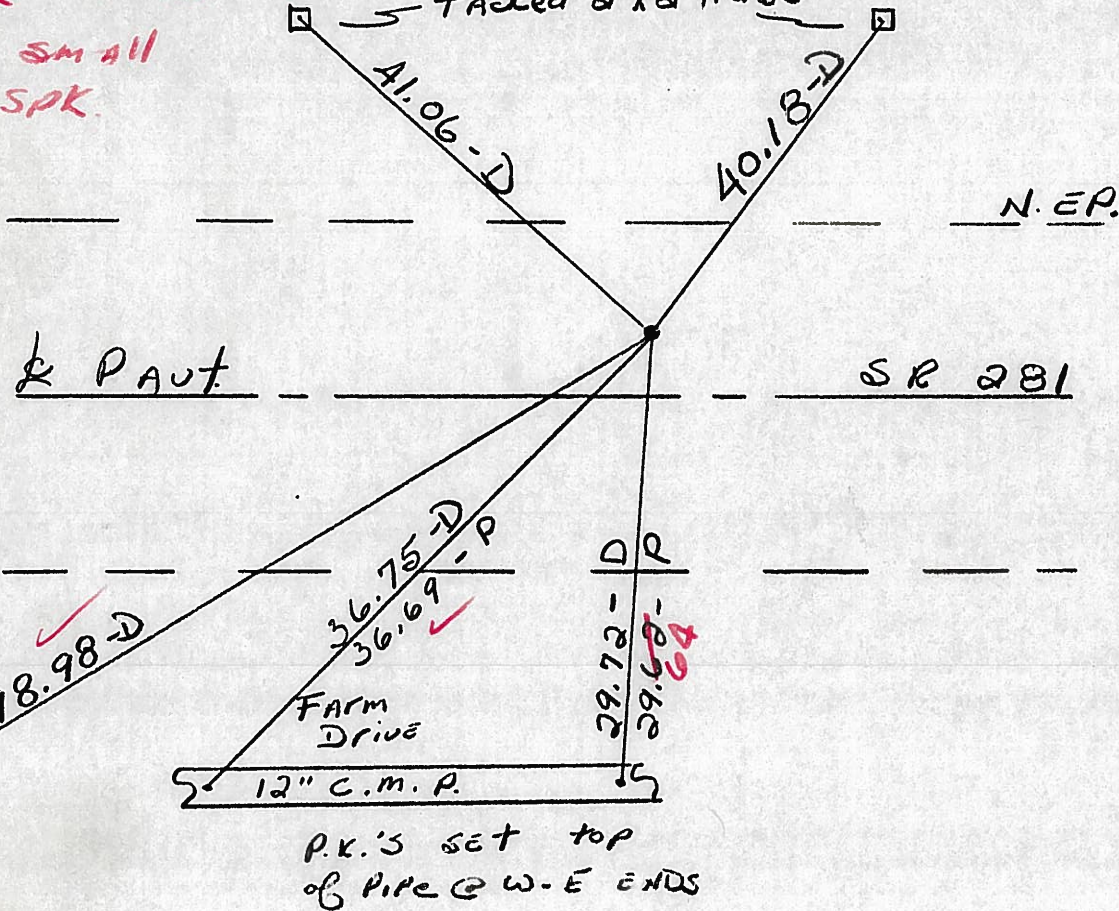
5.2' to N.E. Part. of 281

4.0' N of E

16.2' to S.E. Part

Temporary Tacked 2 x 2 HUBS

set small K.R. SPK.



P.K.'S SET TOP OF PIPE @ W-E ENDS

(Note: Point was set on MEAN. Dist & ANGLE. DID NOT DIS FOR STAKE - REC.)

Q.D.O.T. DISTRICT 2 SURVEY OFFICE

Sht. ___ of ___

County Wood S.R. 281

Date 7-14-81 8-20-81

Township Miltad

Weather clear

Section 19

Temp. +68°

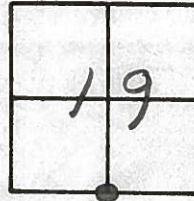
T4N, R9E

Personnel Hoffman

Householder

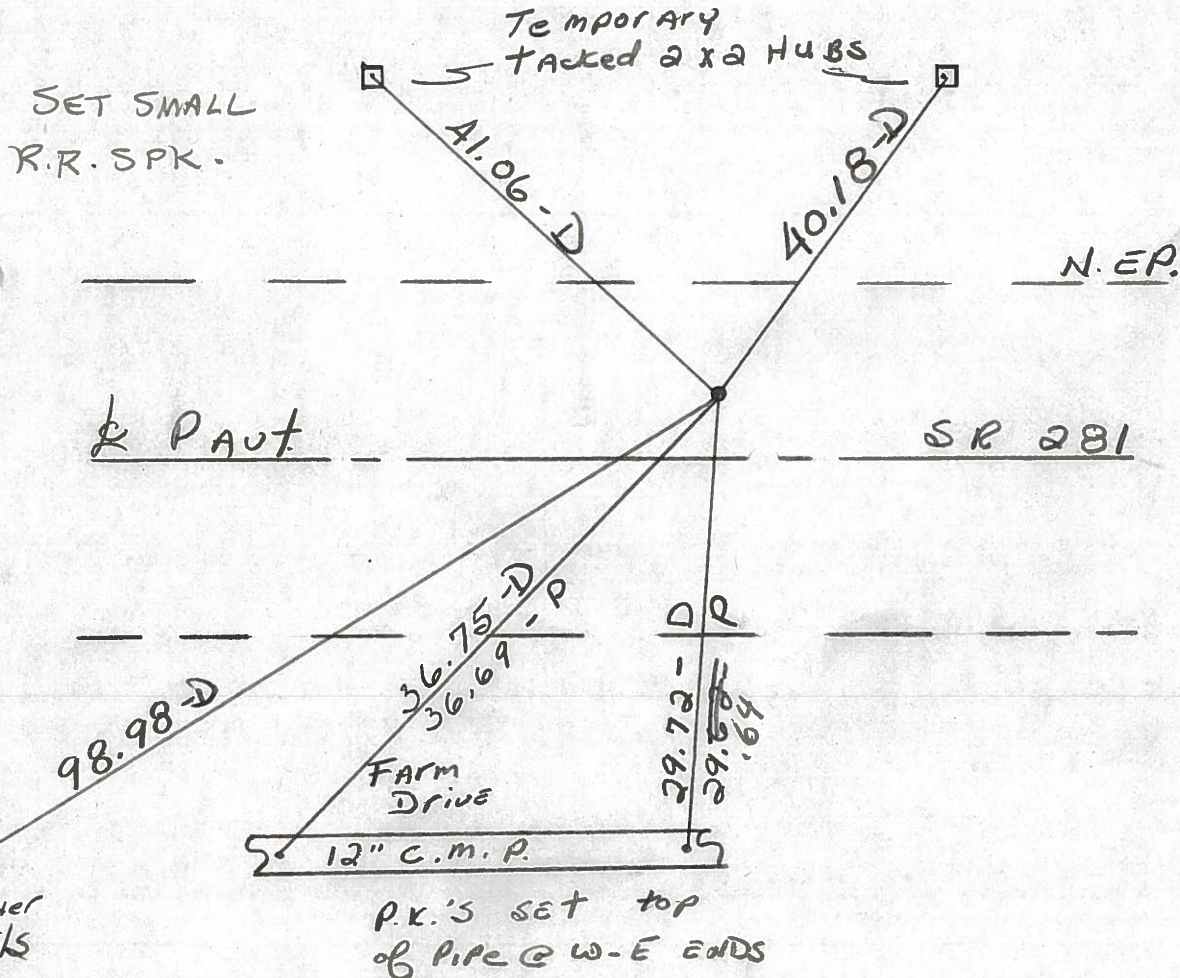
Loehrke

#3



Fd. Small Nail 2" Below Surface
5.2' to N.E. Part. of 281

PROJECT STA ± 26+00.8



Shiner
N.E.S

P.K.'S SET TOP
OF PIPE @ W-E ENDS

(Note: Point WAS SET ON MEAS. DIST & ANGLE. DID NOT DIG FOR STONE - REC.)

O.D.O.T. DISTRICT 2 SURVEY OFFICE

SHEET

OF

County Wood S.R. 281

Township Milton

Section 19

T4N, R9E

Personnel S. Hoffman

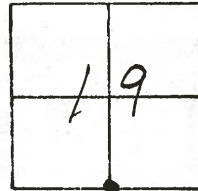
C. Loehrke

J. Householder

Date 5-19-81

Weather cloudy - WINDY

Temp. 55°



NOTE: POINT WAS SET ON MEAN. DIST. & ANGLE. DID NOT DIG FOR STONE

STA 26+00.8 ±

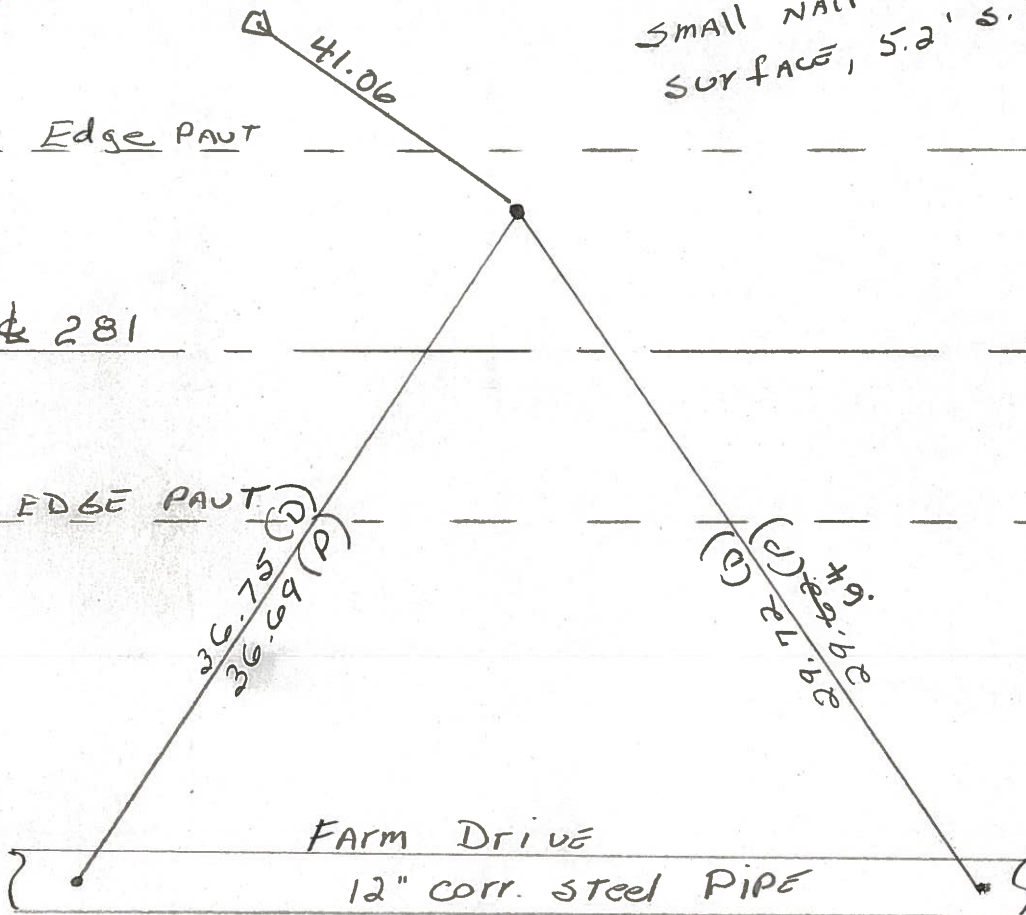
#3 SET SMALL

SMALL NAIL FOUND 2" Below SURFACE, 5.2' S. of N. EDGE PUT.

N. Edge PAUT

281

S. EDGE PAUT



P.K. NAIL SET TOP of PIPE ± 0.5' FROM W. END

P.K. NAIL SET TOP of PIPE ± 0.6' FROM EAST END

PERSONNEL TITLE PERSONNEL TITLE

COUNTY Wood

DATE OK 12-2-57

281

WEATHER 11-3-60 Knappe

SEC. D, E, F & G.

TEMP. 2-28-64

DESCRIPTION From Henry-Wood Co. line East.

JOB NO.

LEFT CENTER LINE RIGHT

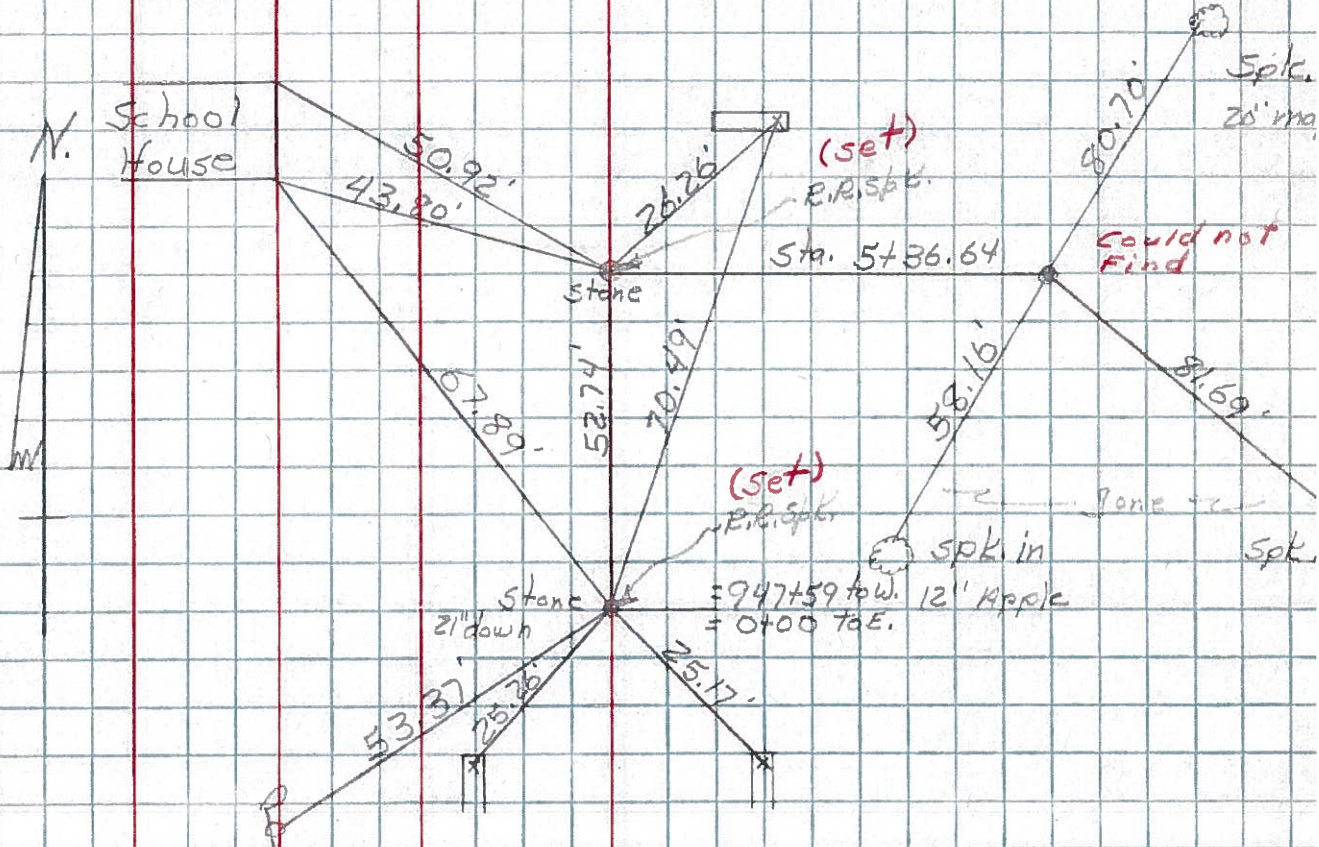
Sta. 0+00

S.W. cor. sec. 19 Milton
Twp. Wood & Henry Co.
Lines. Stone

X on N. end W. Hdwl. S.W. 76.
S. belt of pump N.W. 61.4
Bottom brick N.E. Cor. brick 5ch
W. 50.2
Bottom brick S.E. Cor. brick 5ch
W. 43.

①

#144



②

Sta. 26+00.8 (old)
Did not find (12-2-57)

Shiner in T.P. 28.1
Spike in L.P. 92.4
Shiner in Cor. P. 28.6

③

#145

set shiner on A 26+00.8 from West
" " " " " " East

Note - overlap of 7.35'