

O.D.O.T. DISTRICT 2 SURVEY OFFICE (USE ONLY)

PERSONNEL

REFERENCE NO. 4

SHEET 4 OF 15

NOTES HOMAN

DATE 7/1/14

ROUTE SR 281

H.C. LEU

WEATHER CLOUDY

COUNTY WOOD

R.C. MEYER

TEMP. 75°

TOWNSHIP MILTON

SECTION 19

DWG BY RHOADES PID CHIP SEAL

T 4 N R 9 E

TYPE MONUMENT MAG/WASHER

ON SURFACE - ~~BELOW~~ ON

OFFSET ☉ PAVEMENT ON LT : RT

9.9' TO LT EDGE PAVEMENT 20.7' LT OF ☉ N.

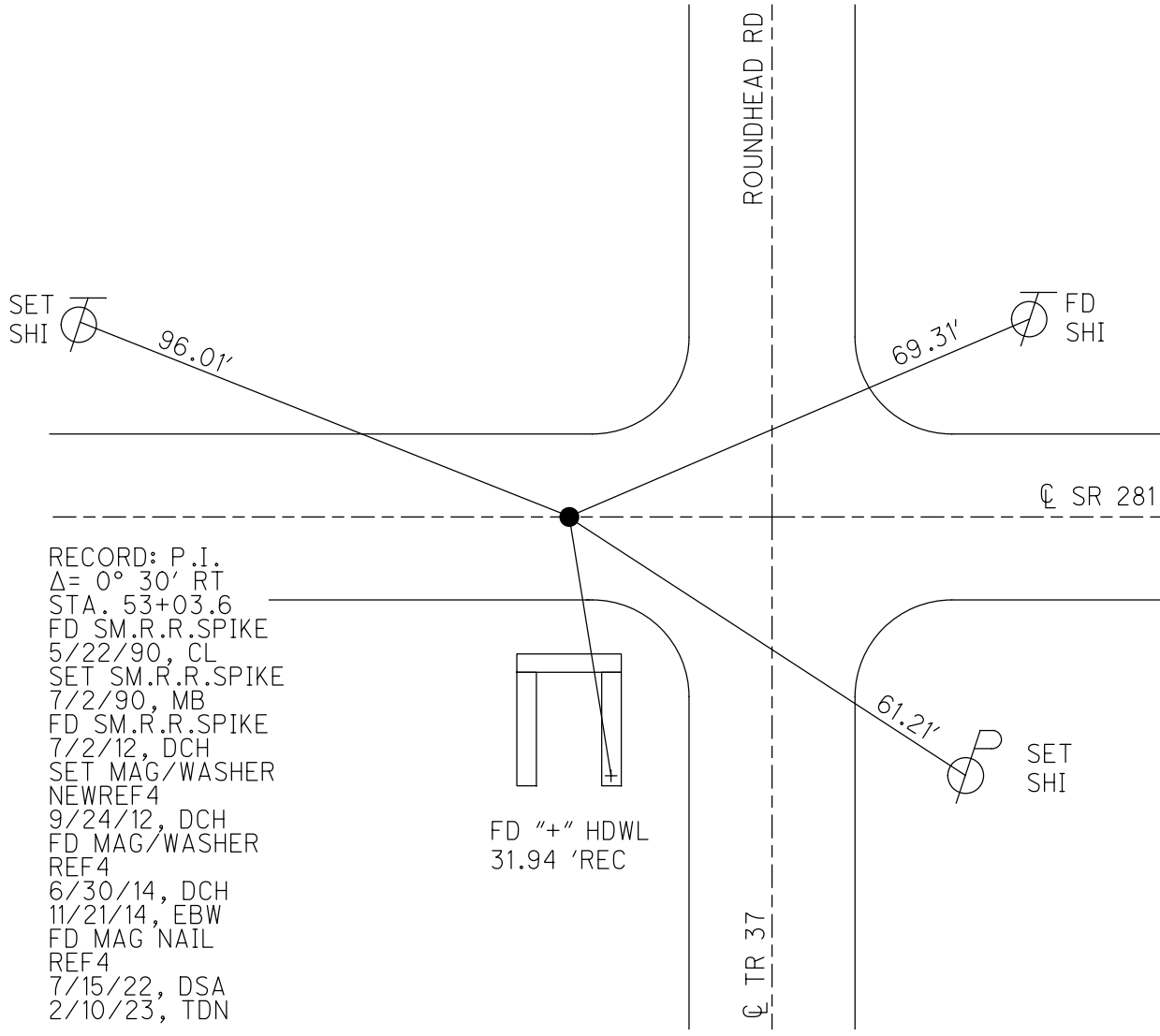
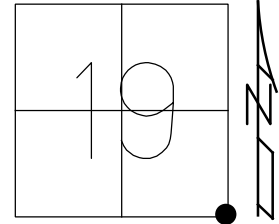
STATION: 52+95

HORZ.DATUM: NAD83 2011

GEOID: NAVD88 2018

GRID: NORTHING: 592392.804

EASTING: 1593800.730



RECORD: P.I.
 $\Delta = 0^\circ 30' RT$
 STA. 53+03.6
 FD SM.R.R.SPIKE
 5/22/90, CL
 SET SM.R.R.SPIKE
 7/2/90, MB
 FD SM.R.R.SPIKE
 7/2/12, DCH
 SET MAG/WASHER
 NEWREF4
 9/24/12, DCH
 FD MAG/WASHER
 REF4
 6/30/14, DCH
 11/21/14, EBW
 FD MAG NAIL
 REF4
 7/15/22, DSA
 2/10/23, TDN

FD \"+\" HDWL
 31.94 'REC

ROUNDHEAD RD

☉ TR 37

☉ SR 281

SET SHI \odot 96.01'

69.31' \odot FD SHI

61.21' \odot SET SHI

O.D.O.T. DISTRICT 2 SURVEY OFFICE (USE ONLY)

PERSONNEL

REFERENCE NO. 4

SHEET 4 OF 15

NOTES HOMAN

DATE 7/1/14

ROUTE SR 281

H.C. LEU

WEATHER CLOUDY

COUNTY WOOD

R.C. MEYER

TEMP. 75°

TOWNSHIP MILTON

DWG BY ROHOADES

PID 92214

SECTION 19

T 4 N R 9 E

TYPE MONUMENT MAG/WASHER

ON SURFACE - ~~BELOW~~ ON

OFFSET $\text{\textcircled{C}}$ PAVEMENT ON LT : RT

9.9' TO LT EDGE PAVEMENT (20.7' LT OF $\text{\textcircled{C}}$ N.)

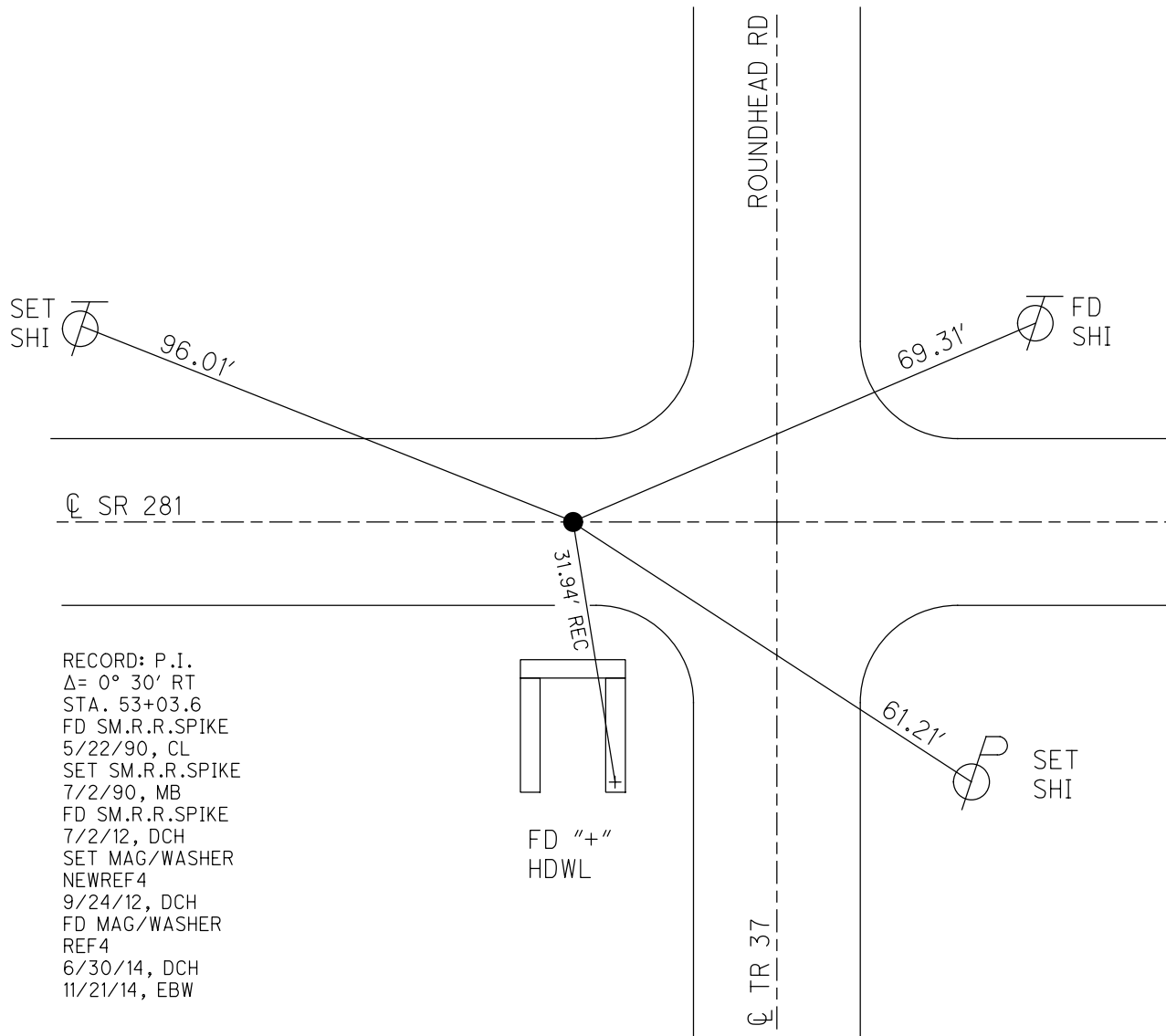
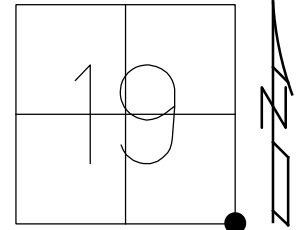
STATION: 52+95

HORIZ.DATUM: NAD83 2011

GEOID: NAVD88 2012A

GRID: NORTHING: 592393.022

EASTING: 1593800.705

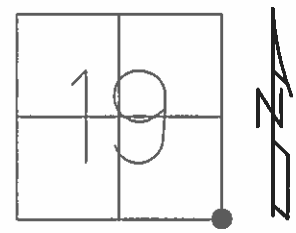


RECORD: P.I.
 $\Delta = 0^\circ 30' \text{ RT}$
 STA. 53+03.6
 FD SM.R.R.SPIKE
 5/22/90, CL
 SET SM.R.R.SPIKE
 7/2/90, MB
 FD SM.R.R.SPIKE
 7/2/12, DCH
 SET MAG/WASHER
 NEWREF4
 9/24/12, DCH
 FD MAG/WASHER
 REF4
 6/30/14, DCH
 11/21/14, EBW

O.D.O.T. DISTRICT 2 SURVEY OFFICE (USE ONLY)

PERSONNEL _____ REFERENCE NO. 4 SHEET 4 OF 15
 NOTES HOMAN DATE 7/2/12 ROUTE SR 281
 H.C. ROUSOS WEATHER SUNNY COUNTY WOOD
 R.C. HOMAN TEMP. 75° TOWNSHIP MILTON
 SECTION 19
 T 4 N 9 E

TYPE MONUMENT SM.R.R.SPIKE
 ON SURFACE - ~~BELOW~~ ON
 LEFT - ☉ PAV'T - RIGHT ON
9.9' TO LT EDGE PAVEMENT (20.7' LT OF ☉ N.)
 S.L.M. 52+95
 GRID: NORTHING: 592393.022 EASTING: 1593800.705



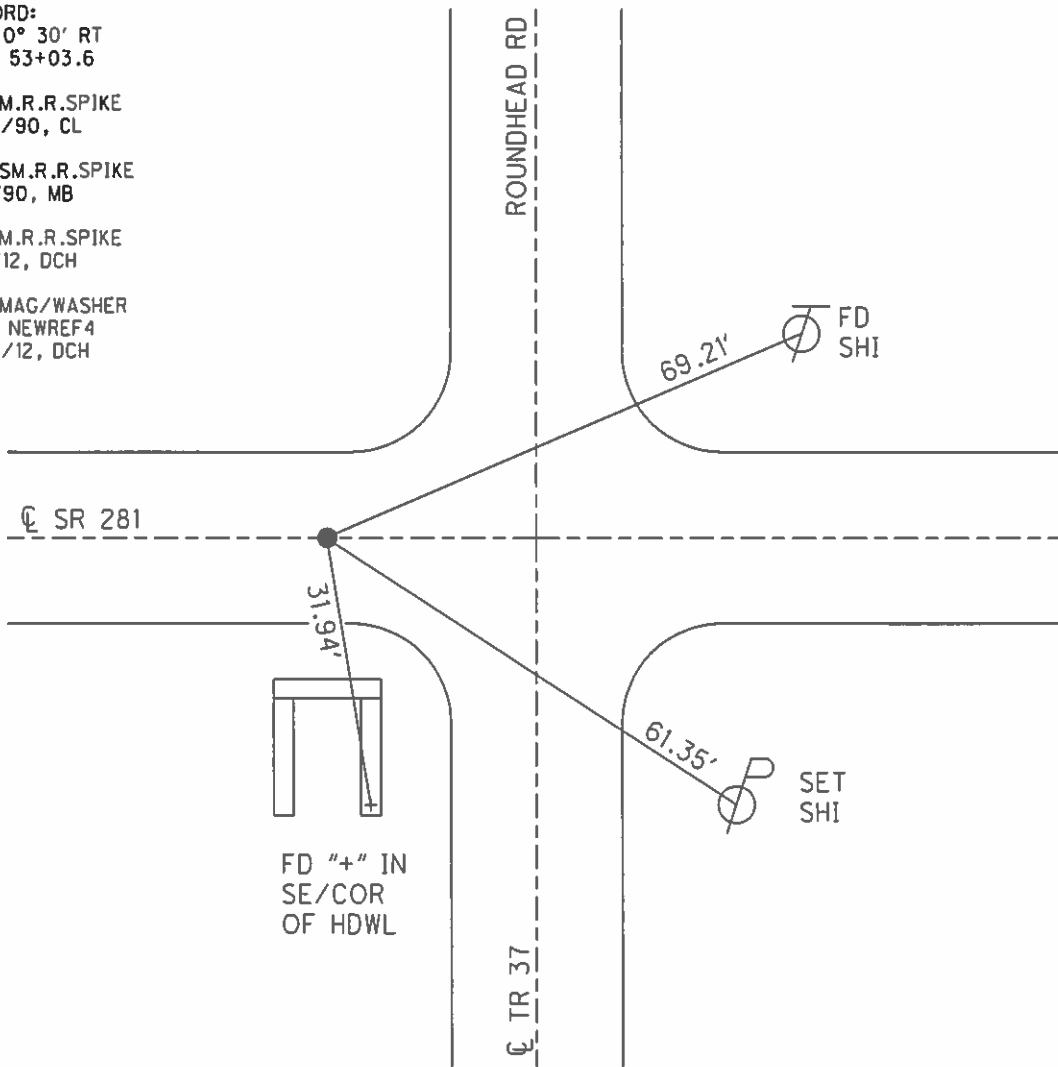
RECORD:
 $\Delta = 0^\circ 30' RT$
 STA. 53+03.6

FD SM.R.R.SPIKE
 5/22/90, CL

SET SM.R.R.SPIKE
 7/2/90, MB

FD SM.R.R.SPIKE
 7/2/12, DCH

SET MAG/WASHER
 GPS, NEWREF4
 9/24/12, DCH



O.D.O.T. DISTRICT 2 SURVEY OFFICE

PERSONNEL _____

REFERENCE NO. 4

SHEET _____ OF _____

NOTES BARNHISEL

H.C. Loehreke

DATE 5-22-90

ROUTE 281

R.C. HOFFMAN

WEATHER WINDY

COUNTY Wood

TEMP. +62°

TOWNSHIP Milton

SECTION 19

T 4 N R 9 E

TYPE MONUMENT Sm RR Spk

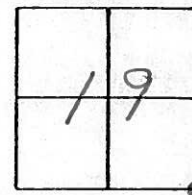
ON SURFACE - BELOW yes

LEFT - E PAV'T. - RIGHT yes

9.9 TO LT EDGE PAVEMENT

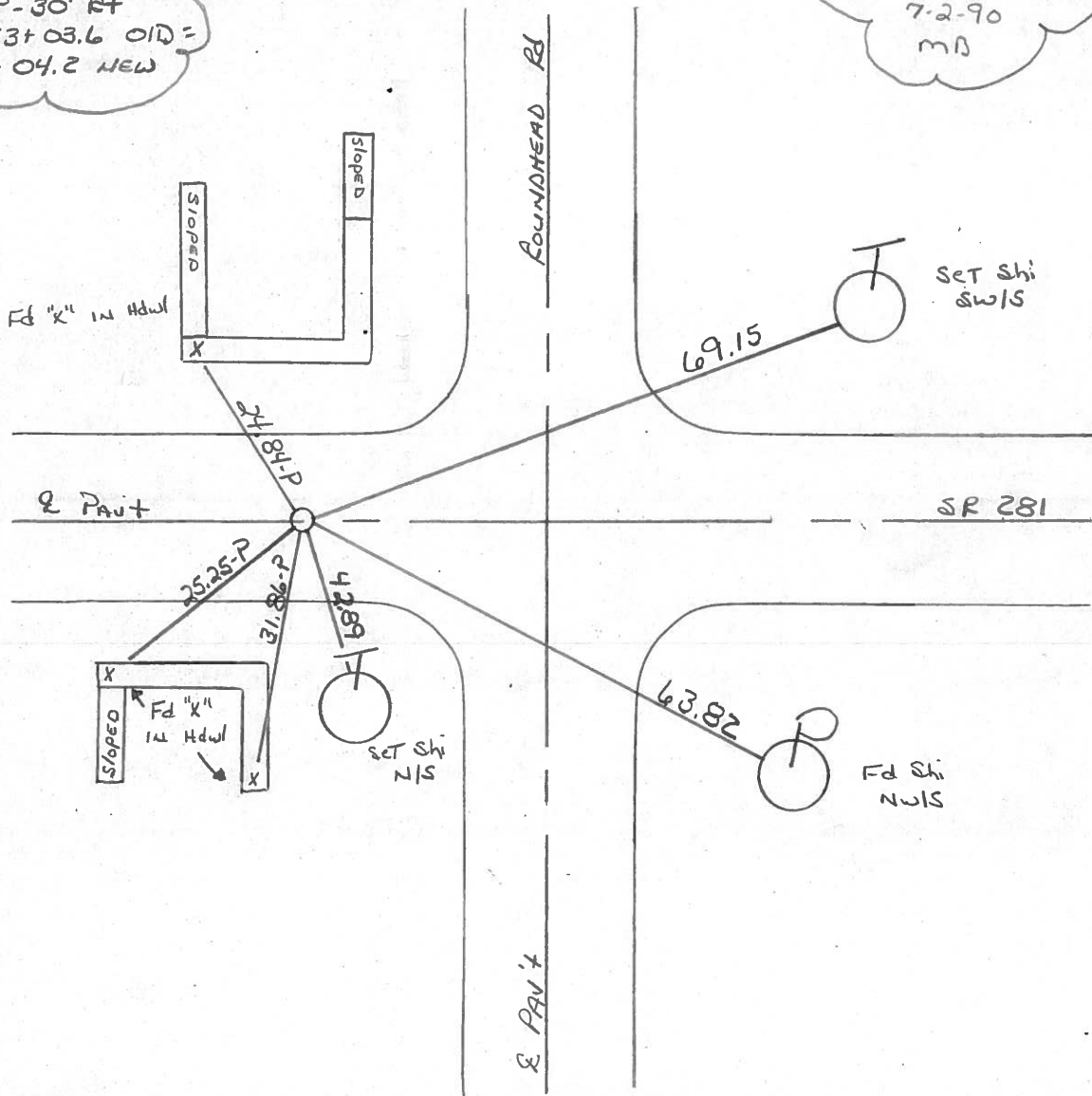
S.L.M. 52+95

20.7 LT OF E NORTH



RECORD:
 $\Delta = 0^\circ - 30'$ Rt
 STA: 53+03.6 OLD =
 53+04.2 NEW

Set Sm RR Spk
 7-2-90
 MB



O.D.O.T. DISTRICT 2 SURVEY OFFICE

SHEET

OF

County Wood S.R. 281

Township Milton

Section 19

T4N, R9E

Personnel S. Hoffman

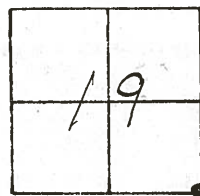
C. Loehrke

L. Householder

Date 5-19-81 8-24-81

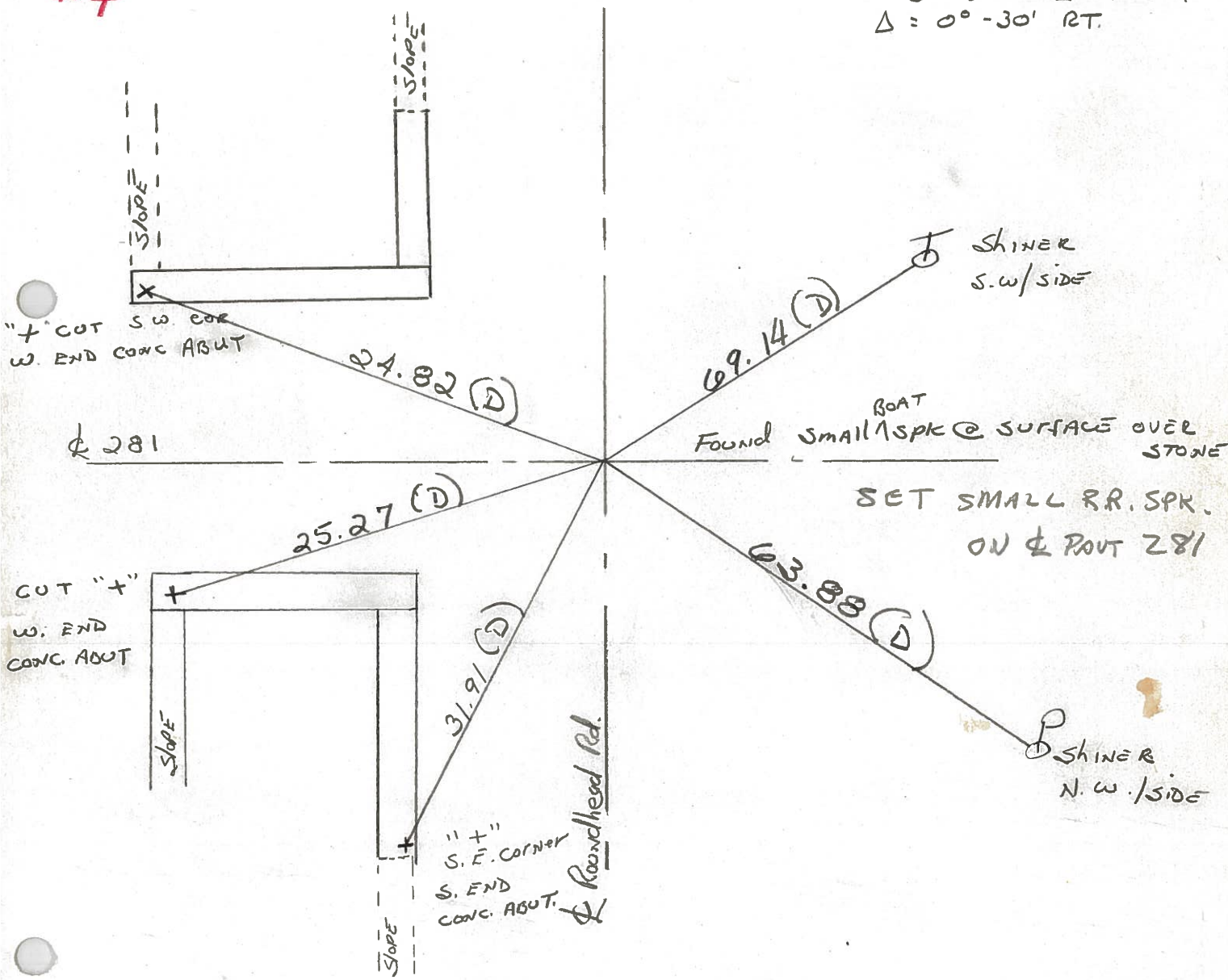
Weather PART. Cloudy - Windy

Temp. 58°



#4

STA. 53+03.6 OLD =
53+04.2 NEW.
Δ = 0°-30' RT.



PERSONNEL TITLE PERSONNEL TITLE
 CK. BY TAG COUNTY WOOD DATE OK-11-18-70
 SILVESTER S. R. #281 WEATHER
 BURNSIDE SEC. 20 TEMP.
 SMITH

CONTROL TIES

DESCRIPTION LEFT CENTER LINE RIGHT JOB NO.

<p>STA. 79+87.4 1/4 POST SEC 20 MILTON TWP. T-4-N R-9-E $\Delta = 0^\circ - 8' - 30''$ RT. "STONE" SET BOAT SPK. (WENTZ ROAD)</p>	<p>#5</p>		<p>"X" N.W. COR. WINGWALL N.E. 35.4 "X" S.W. COR. WINGWALL S.E. 35.0 N.E. COR. HOUSE 2' ABOVE GND S.W. 77.4 SHINER T. POLE N.W. 43. SHINER 12" PINE S.W. 63.</p>
<p>#147</p> <p>STA. 53+03.6 (OLD) = 53+04.2 S.W. COR. SEC. 20 MILTON TWP T-4-N R-9-E $\Delta = 0^\circ - 30'$ RT. "STONE" SET BOAT SPK. (ROUND HEAD ROAD)</p>	<p>#4</p>		<p>"X" ON S. CULVERT ABUT. S. 31.92 SHINER P. POLE S.E. 62.65 "X" N.W. COR. S. CULVERT ABUT. 25.2 "X" S.W. COR. N. CULVERT ABUT. 24.8</p>
<p>STA. 26+00.8</p> <p>(DID NOT FIND) (12-2-57 & 4-27-70) #145</p>			

PERSONNEL TITLE PERSONNEL TITLE

COUNTY Wood

DATE OK 12-3-57

S. R. #281

Sworden 3-22-60
Knebe 11-3-60

WEATHER 2-28-64

SEC. TEMP.

DESCRIPTION LEFT CENTER LINE RIGHT JOB NO.

Sta. 53+0.36 (old) = 53+04.2
S.W. Cor. sec. 20 Milton
Twp. Stone. - Iron rod (Fd)
 $\Delta = 0^\circ - 30' \text{ Rt.}$ (Roundhead Rd.)

set
P.K. Nail

S. to X on S. culvert about 31.1
S.E. to shiner in P.P. 62.65' 62.
X in N.W. cor. of S. culvert about 25.2 25.
X in S.W. cor. of N. culvert about 24.

④ #146

Sta. 79+87.4
S 1/4 post sec. 20 Milton
Twp. Stone. - Iron pin (Fd)
 $\Delta = 0^\circ - 8 \frac{1}{2}' \text{ Rt.}$ (Wentz Rd.)

X on N.W. Cor W. wall N.E. 35.40' 35.
X on S.W. Cor. W. wall S.E. 35.02' 34.
N.E. Cor. of house 2' above gnd. S.W. 47.
Shiner in Tele. Pole N.W. 43.5

⑤ #147

Sta. 93+33.6
S.E. 1/8 post sec. 20 W. Corp.
line Custer (Fd I. Rod)
No Angle

set
P.K. Nail

Face leaning
Steel sign post N. 33.54 33.4
Steel sign post S.W. 42.38 42.
N. Steel Sign Post S.E. corp. sign 22.4

⑤-A #147-A

Sta. 106+83.16
R.R. Spike in center of
S.R. #281 & Custer Rd. (Fd)

Shiner in P. Pole N.E. 51.1
Well pump casing S.W. 41.03' 40.8
N. pt. Gas pump island S.E. 69.3
N.E. to stone fld. store 46.20' 46.1

⑥ #148

Shiner P. Pole S.W. 39.49
Shiner P. Pole N.E. 50.6
Shiner 12" Walnut N.W. 67.83
.70