

O.D.O.T. DISTRICT 2 SURVEY OFFICE (USE ONLY)

PERSONNEL

REFERENCE NO. 5

SHEET 5 OF 15

NOTES HOMAN

DATE 7/1/14

ROUTE SR 281

H.C. LEU

WEATHER CLOUDY

COUNTY WOOD

R.C. MEYER

TEMP. 75°

TOWNSHIP MILTON

SECTION 20

DWG BY RHOADES

PID CHIP SEAL

T 4 N R 9 E

TYPE MONUMENT MAG/WASHER

ON SURFACE - ~~BELOW~~ ON

OFFSET  $\text{C}$  PAVEMENT ON LT : RT

- TO LT EDGE PAVEMENT

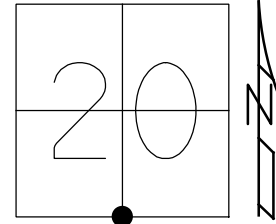
STATION: 79+91

HORZ. DATUM: NAD83 2011

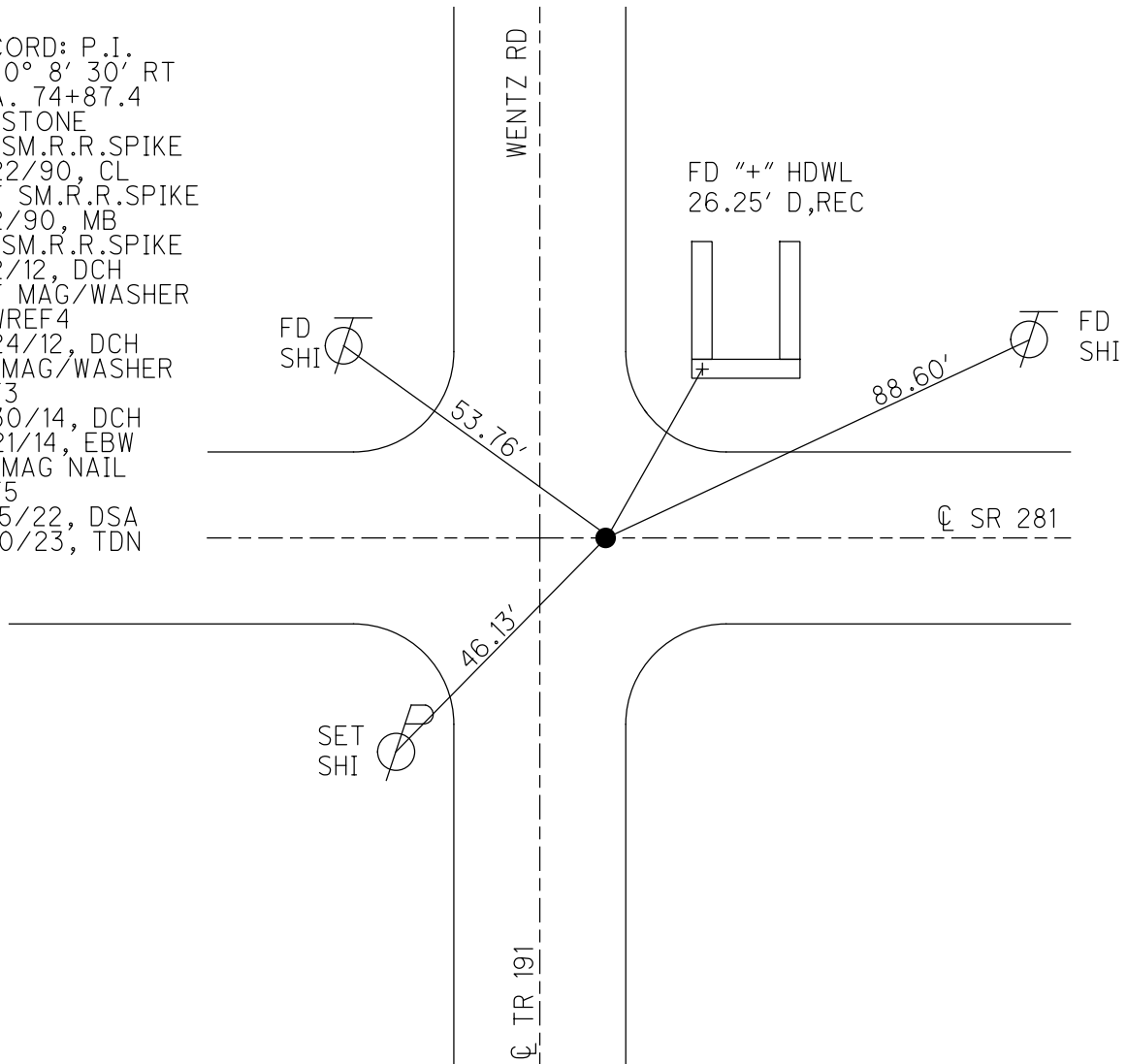
GEOID: NAVD88 2018

GRID: NORTHING: 592343.193

EASTING: 1596494.809



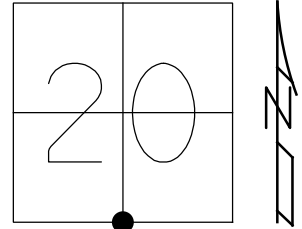
RECORD: P.I.  
 $\Delta = 0^\circ 8' 30''$  RT  
 STA. 74+87.4  
 FD STONE  
 FD SM.R.R.SPIKE  
 5/22/90, CL  
 SET SM.R.R.SPIKE  
 7/2/90, MB  
 FD SM.R.R.SPIKE  
 7/2/12, DCH  
 SET MAG/WASHER  
 NEWREF4  
 9/24/12, DCH  
 FD MAG/WASHER  
 REF3  
 6/30/14, DCH  
 11/21/14, EBW  
 FD MAG NAIL  
 REF5  
 7/15/22, DSA  
 2/10/23, TDN



O.D.O.T. DISTRICT 2 SURVEY OFFICE (USE ONLY)

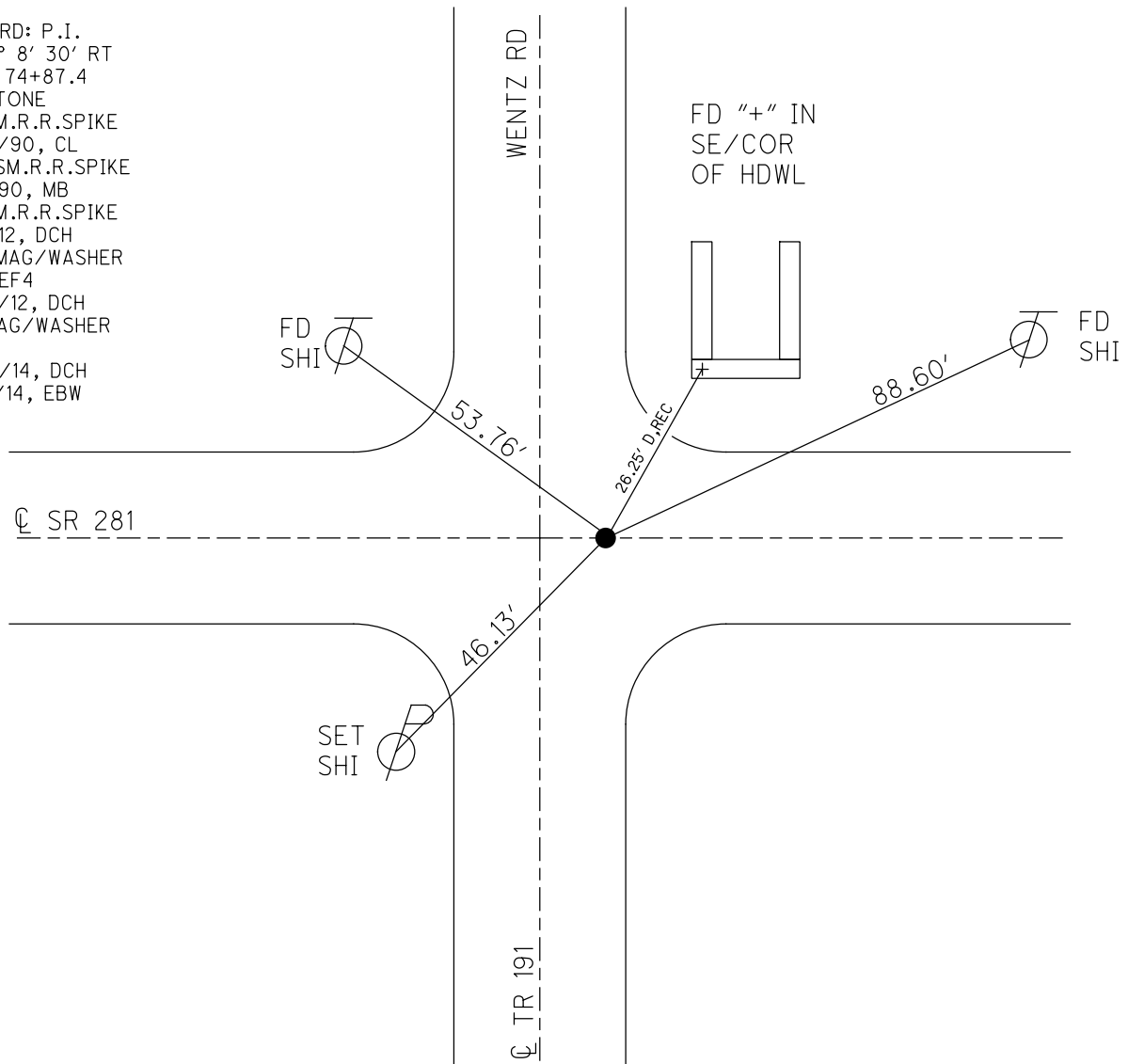
PERSONNEL \_\_\_\_\_ REFERENCE NO. 5 SHEET 5 OF 15  
 NOTES HOMAN DATE 7/1/14 ROUTE SR 281  
 H.C. LEU WEATHER CLOUDY COUNTY WOOD  
 R.C. MEYER TEMP. 75° TOWNSHIP MILTON  
 DWG BY ROHOADES PID 92214 SECTION 20  
 T 4 N R 9 E

TYPE MONUMENT MAG/WASHER  
 ON SURFACE - ~~BELOW~~ ON  
 OFFSET Q PAVEMENT ON LT : RT  
- TO - EDGE PAVEMENT  
 STATION: 79+91



HORZ. DATUM: NAD83 2011 GEOID: NAVD88 2012A  
 GRID: NORTHING: 592343.256 EASTING: 1596494.706

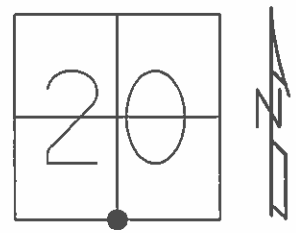
RECORD: P.I.  
 $\Delta = 0^\circ 8' 30''$  RT  
 STA. 74+87.4  
 FD STONE  
 FD SM.R.R.SPIKE  
 5/22/90, CL  
 SET SM.R.R.SPIKE  
 7/2/90, MB  
 FD SM.R.R.SPIKE  
 7/2/12, DCH  
 SET MAG/WASHER  
 NEWREF4  
 9/24/12, DCH  
 FD MAG/WASHER  
 REF3  
 6/30/14, DCH  
 11/21/14, EBW



O.D.O.T. DISTRICT 2 SURVEY OFFICE (USE ONLY)

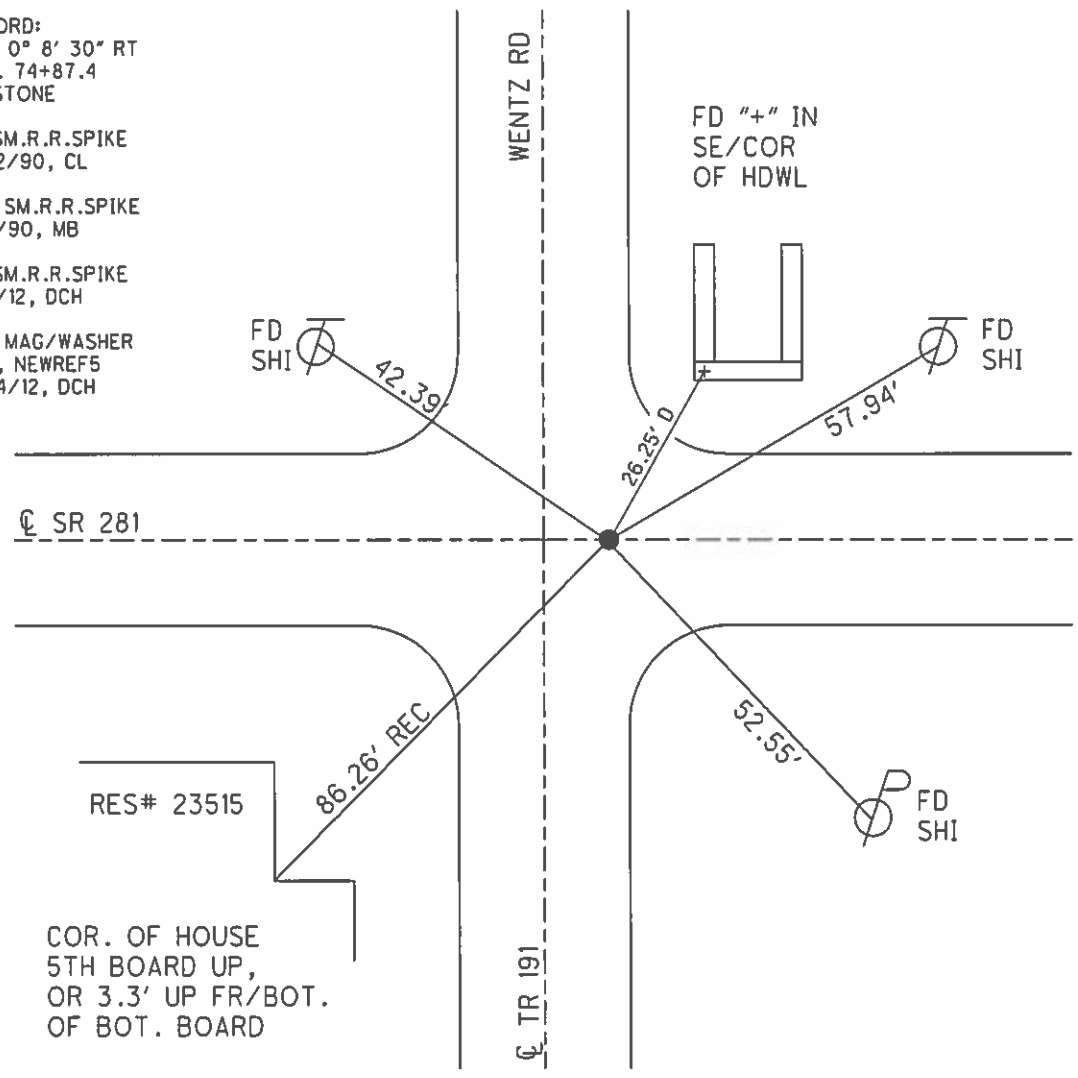
PERSONNEL \_\_\_\_\_ REFERENCE NO. 5 SHEET 5 OF 15  
 NOTES HOMAN DATE 7/2/12 ROUTE SR 281  
 H.C. ROUSOS WEATHER SUNNY COUNTY WOOD  
 R.C. HOMAN TEMP. 75° TOWNSHIP MILTON  
 \_\_\_\_\_ SECTION 20  
 \_\_\_\_\_ T 4 N R 9 E

TYPE MONUMENT SM.R.R.SPIKE  
 ON SURFACE - ~~BELOW~~ ON  
 LEFT - ☉ PAV'T - RIGHT ON  
 \_\_\_\_\_ TO \_\_\_\_\_ EDGE PAVEMENT  
 S.L.M. 79+91



GRID: NORTHING: 592343.256 EASTING: 1596494.706

RECORD:  
 $\Delta = 0^\circ 8' 30''$  RT  
 STA. 74+87.4  
 FD STONE  
 FD SM.R.R.SPIKE  
 5/22/90, CL  
 SET SM.R.R.SPIKE  
 7/2/90, MB  
 FD SM.R.R.SPIKE  
 7/2/12, DCH  
 SET MAG/WASHER  
 GPS, NEWREF5  
 9/24/12, DCH



RES# 23515  
 COR. OF HOUSE  
 5TH BOARD UP,  
 OR 3.3' UP FR/BOT.  
 OF BOT. BOARD

# O.D.O.T. DISTRICT 2 SURVEY OFFICE

PERSONNEL \_\_\_\_\_

REFERENCE NO. 5

SHEET \_\_\_\_\_ OF \_\_\_\_\_

NOTES BARNHISEL

H.C. Loehake

DATE 5-22-90

ROUTE 281

R.C. HOFFMAN

WEATHER WINDY

COUNTY WOOD

TEMP. +62°

TOWNSHIP MILTON

SECTION 20

T4 N R 9 E

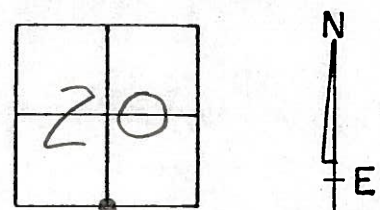
TYPE MONUMENT Sm RR Spk

ON SURFACE - BELOW yes

LEFT - PAV'T. - RIGHT yes

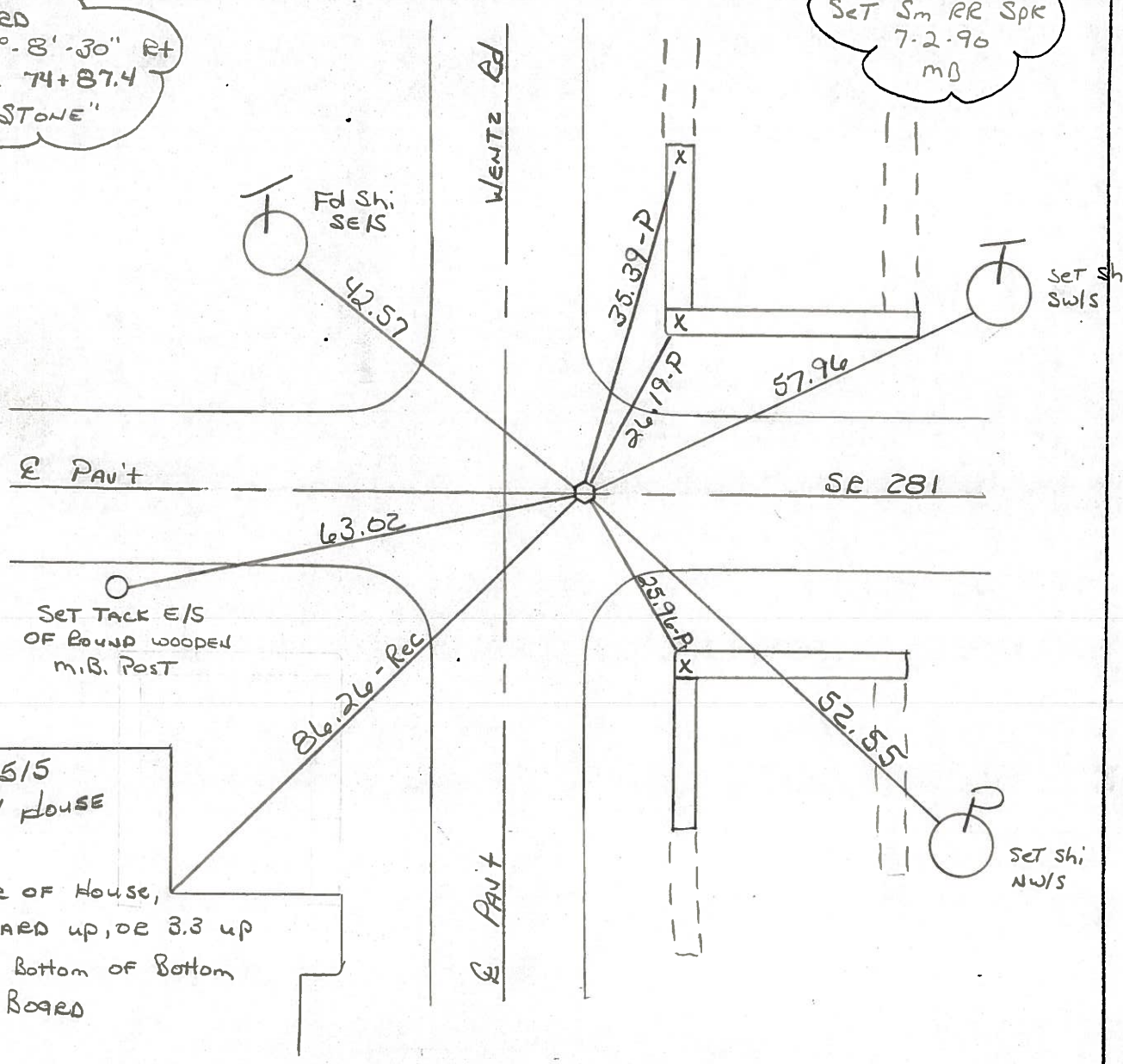
- TO - EDGE PAVEMENT

S.L.M. 79+91 6.0 RT OF E NORTH



RECORD  
 $\Delta = 0^\circ - 8' - 30''$  RT  
 STA: 74+87.4  
 "STONE"

SET Sm RR Spk  
 7-2-90  
 MB



ODOT. DISTRICT 2 SURVEY OFFICE

SHEET OF

County Wood S.R. 281

Township MILTON

Section 20

T4N, R9E

Personnel S. Hoffmann

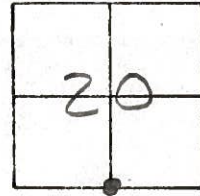
C. Loehrke

L. Householder

Date 5-19-81 - 8-24-81

Weather SUNNY - WINDY

Temp. 60°



STA. 79+87.4  
 $\Delta = 0^\circ - 8' - 30''$  RT.  
 "STONE"

#5

SET SMALL  
 R.P. SPK.

0.40' NO OF  $\phi$  281

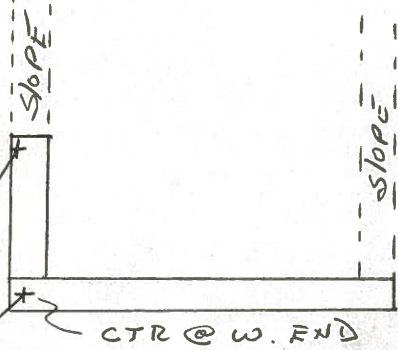
$\phi$  281

SHINER  
 S.E. SIDE

42.55-D

N.W. COR  
 @ N. END

35.40-D  
 26.21-D



FOUND BOAT SPK 1" BELOW SURFACE

#23515

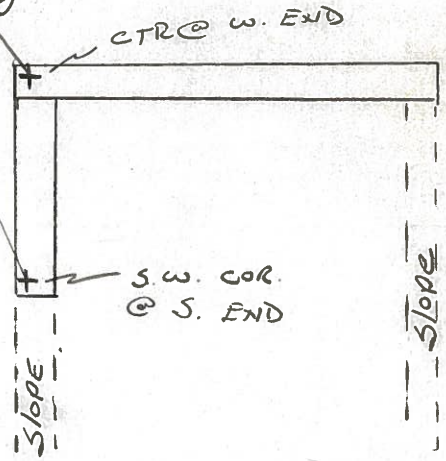
CORNER OF  
 HOUSE, 5" BOARD UP  
 OR 3.3' UP FROM  
 BOTTOM OF BOTTOM  
 BOARD.

86.26-D

26.01-D  
 35.01-D

CTR @ W. END

LEWENTZ ROAD





PERSONNEL	TITLE	PERSONNEL	TITLE	COUNTY	DATE
CK. BY				WOOD	OK-11-18-7
SILVESTER				S. R. #281	WEATHER
BURNSIDE				SEC. 20	TEMP.
SMITH					

DESCRIPTION CONTROL TIES JOB NO. \_\_\_\_\_

LEFT	CENTER LINE	RIGHT
<p>STA. 79+87.4                      1/4 POST SEC 20                      MILTON TWP.                      T-4-N R-9-E  <math>\Delta = 0^\circ - 8' - 30''</math> RT.                      "STONE" SET BOAT SPK.                      (WENTZ ROAD)                      #147</p>	<p>#5</p>	<p>"X" N.W. COR. WINGWALL N.E. 35.4                      "X" S.W. COR. WINGWALL S.E. 35.0                      N.E. COR. HOUSE 2' ABOVE GND. S.W. 77.4                      SHINER T. POLE N.W. 43.                      SHINER 12" PINE S.W. 63.</p>
<p>STA. 53+03.6 (OLD) = 53+04.2                      S.W. COR. SEC. 20                      MILTON TWP.                      T-4-N R-9-E  <math>\Delta = 0^\circ - 30'</math> RT.                      "STONE" SET BOAT SPK.                      (ROUND HEAD ROAD)                      #146</p>	<p>#4</p>	<p>"X" ON S. CULVERT ABUT. S. 31.92                      SHINER P. POLE S.E. 62.65                      "X" N.W. COR. S. CULVERT ABUT. 25.2                      "X" S.W. COR. N. CULVERT ABUT. 24.8</p>
<p>STA. 26+00.8                      (DID NOT FIND)                      (12-2-57, 4-27-70)                      #145</p>		



PERSONNEL	TITLE	PERSONNEL	TITLE

COUNTY Wood DATE OK 12-3-57  
 S. R. #281 WEATHER Sworden 3-22-64  
Knebe 11-3-64  
 SEC. \_\_\_\_\_ TEMP. 2-28-64

DESCRIPTION	LEFT	CENTER LINE	RIGHT	JOB NO.
Sta. 53+0.36 (old) = 53+0.42 S.W. Cor. sec. 20 Milton Twp. Stone. - Iron rod (Fd) Δ = 0°-30' Pt. (Roundhead Rd.)	(4) #146	set P.K. Nail	S. to X on S. culvert about 31.5 S.E. to shiner in P.P. 62.65' 62. X in N.W. cor. of S. culvert about 25.26' 25. X in S.W. cor. of N. culvert about 24.	
Sta. 79+87.4 S 1/4 post sec. 20 Milton Twp. Stone. - Iron pin (Fd) Δ = 0°-8 1/2' Pt. (Wentz Rd.)	(5) #147		X on N.W. Cor. W. wall N.E. 35.40' 35. X on S.W. Cor. W. wall S.E. 35.02' 34. N.E. Cor. of house 2' above gnd. S.W. 47.5 Shiner in Tele. Pole N.W. 43.5	
Sta. 93+33.6 S.E. 1/8 post sec. 20 U. Corp. line Custer (Fd I. Rod) No Angle	(5-A) #147-A	set P.K. Nail	Face leaning Steel sign post N. 33.54' 33.5 Steel sign post S.W. 42.38' 42. N. Steel Sign Post S.E. sign 22.4	
Sta. 106+83.16 R.R. Spike in center of S.R. #281 & Custer Rd.	(6) #148	(Fd)	Shiner in P. Pole N.E. 51.1 Well pump casing 1" above cap S.W. 41.03' 40.8 N. pt. Gas pump Island S.E. 69.3 N.E. to stone Adn. store 46.20' 46.1 Shiner P. Pole S.W. 39.44 Shiner P. Pole N.E. 50.6 Shiner 12" Walnut N.W. 67.83 .70	