

O.D.O.T. DISTRICT 2 SURVEY OFFICE (USE ONLY)

PERSONNEL

REFERENCE NO. 6

SHEET 7 OF 15

NOTES HOMAN
 H.C. ROUSOS
 R.C. HOMAN

DATE 7/2/12
 WEATHER SUNNY
 TEMP. 75°

ROUTE SR 281
 COUNTY WOOD
 TOWNSHIP MILTON
 SECTION 20
T 4 N R 9 E

DWG BY RHOADES PID CHIP SEAL

TYPE MONUMENT P.K./WASHER

ON SURFACE - ~~BELOW~~ ON

OFFSET Q PAVEMENT ON LT : RT

- TO - EDGE PAVEMENT

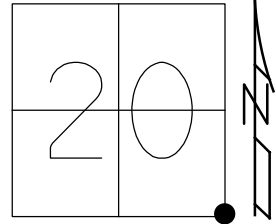
STATION: 106+87

HORZ.DATUM: NAD83 2011

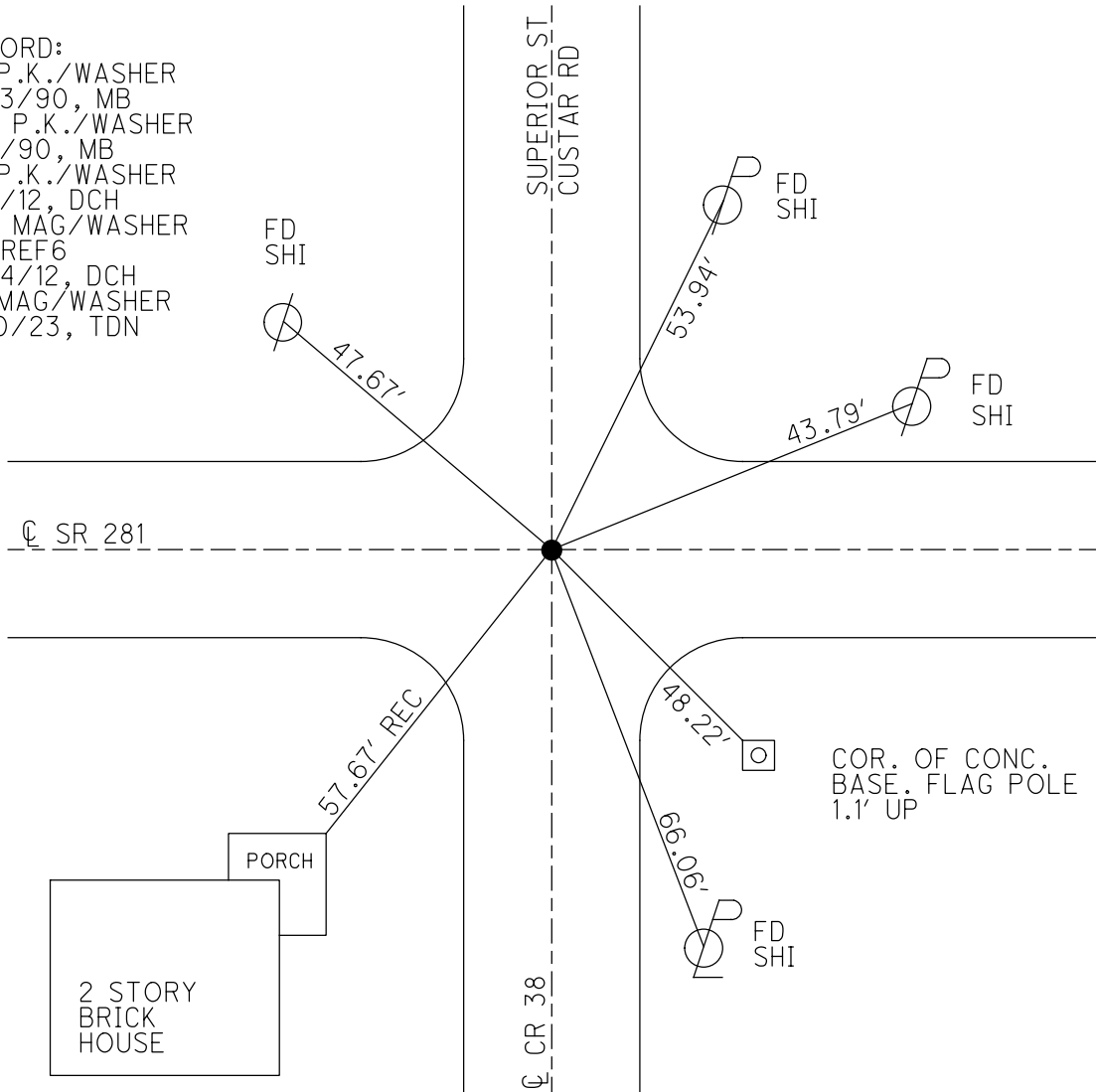
GEOID: NAVD88 2012A

GRID: NORTHING: 592287.223

EASTING: 1599189.500



RECORD:
 FD P.K./WASHER
 5/23/90, MB
 SET P.K./WASHER
 7/2/90, MB
 FD P.K./WASHER
 7/2/12, DCH
 SET MAG/WASHER
 NEWREF6
 9/24/12, DCH
 FD MAG/WASHER
 2/10/23, TDN

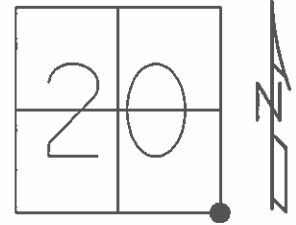


COR. OF CONC.
 BASE. FLAG POLE
 1.1' UP

O.D.O.T. DISTRICT 2 SURVEY OFFICE (USE ONLY)

PERSONNEL _____ REFERENCE NO. 6 SHEET 7 OF 15
 NOTES HOMAN DATE 7/2/12 ROUTE SR 281
 H.C. ROUSOS WEATHER SUNNY COUNTY WOOD
 R.C. HOMAN TEMP. 75° TOWNSHIP MILTON
 _____ SECTION 20
 _____ T 4 N R 9 E

TYPE MONUMENT P.K./WASHER
 ON SURFACE - ~~BELOW~~ ON
 LEFT - Q PAV'T - RIGHT ON
 _____ TO _____ EDGE PAVEMENT
 S.L.M. 106+87



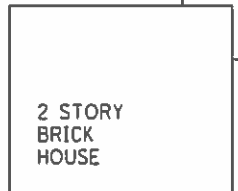
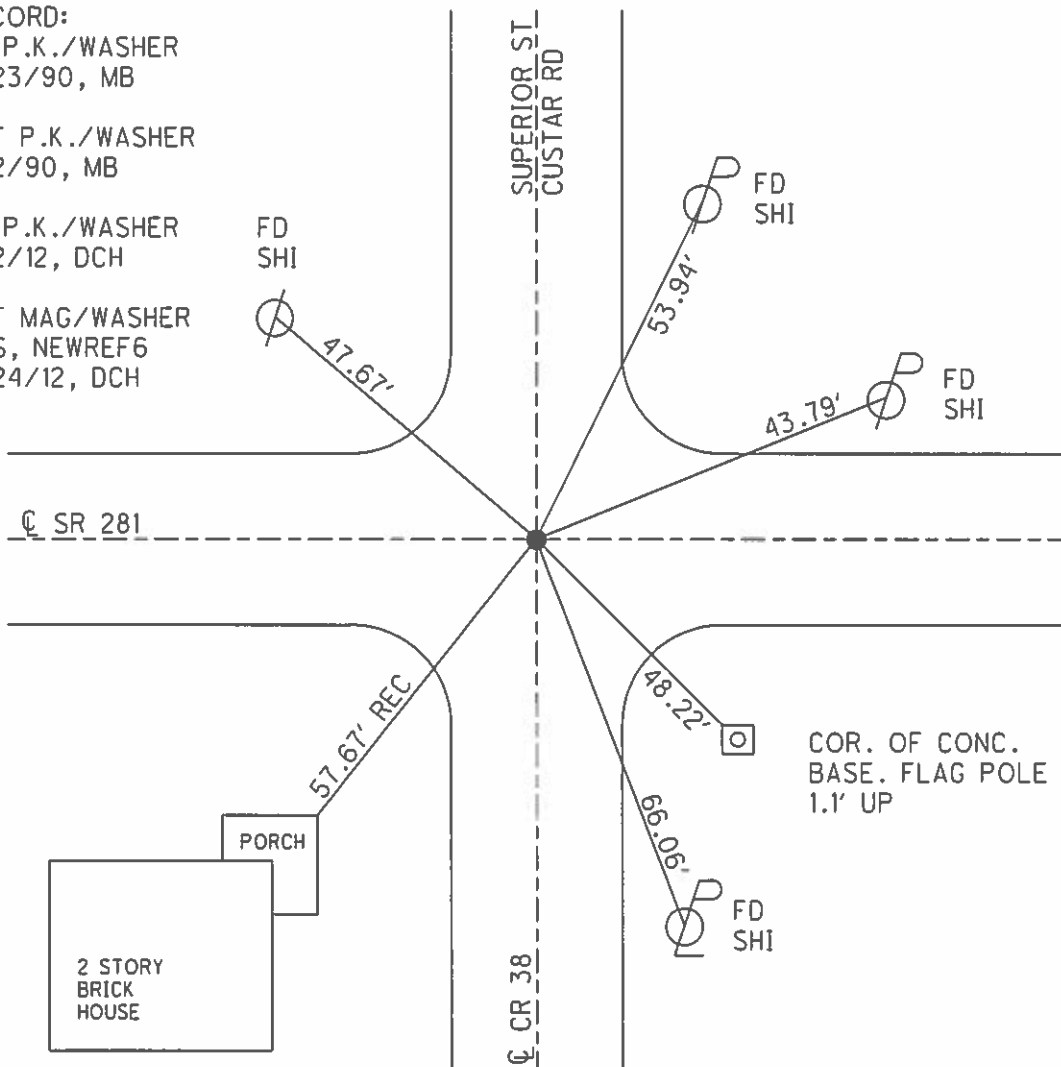
GRID: NORTHING: 592287.223 EASTING: 1599189.500

RECORD:
 FD P.K./WASHER
 5/23/90, MB

SET P.K./WASHER
 7/2/90, MB

FD P.K./WASHER
 7/2/12, DCH

SET MAG/WASHER
 GPS, NEWREF6
 9/24/12, DCH



COR. OF CONC.
 BASE. FLAG POLE
 1.1' UP

O.D.O.T. DISTRICT 2 SURVEY OFFICE

PERSONNEL _____

REFERENCE NO. 6

SHEET _____ OF _____

NOTES BARNHISEL

H.C. " "

R.C. HOFFMAN

DATE 5-23-90

WEATHER Sunny

TEMP. +65°

ROUTE 281

COUNTY Wood

TOWNSHIP Milton

SECTION 20

T 4 N R 9 E

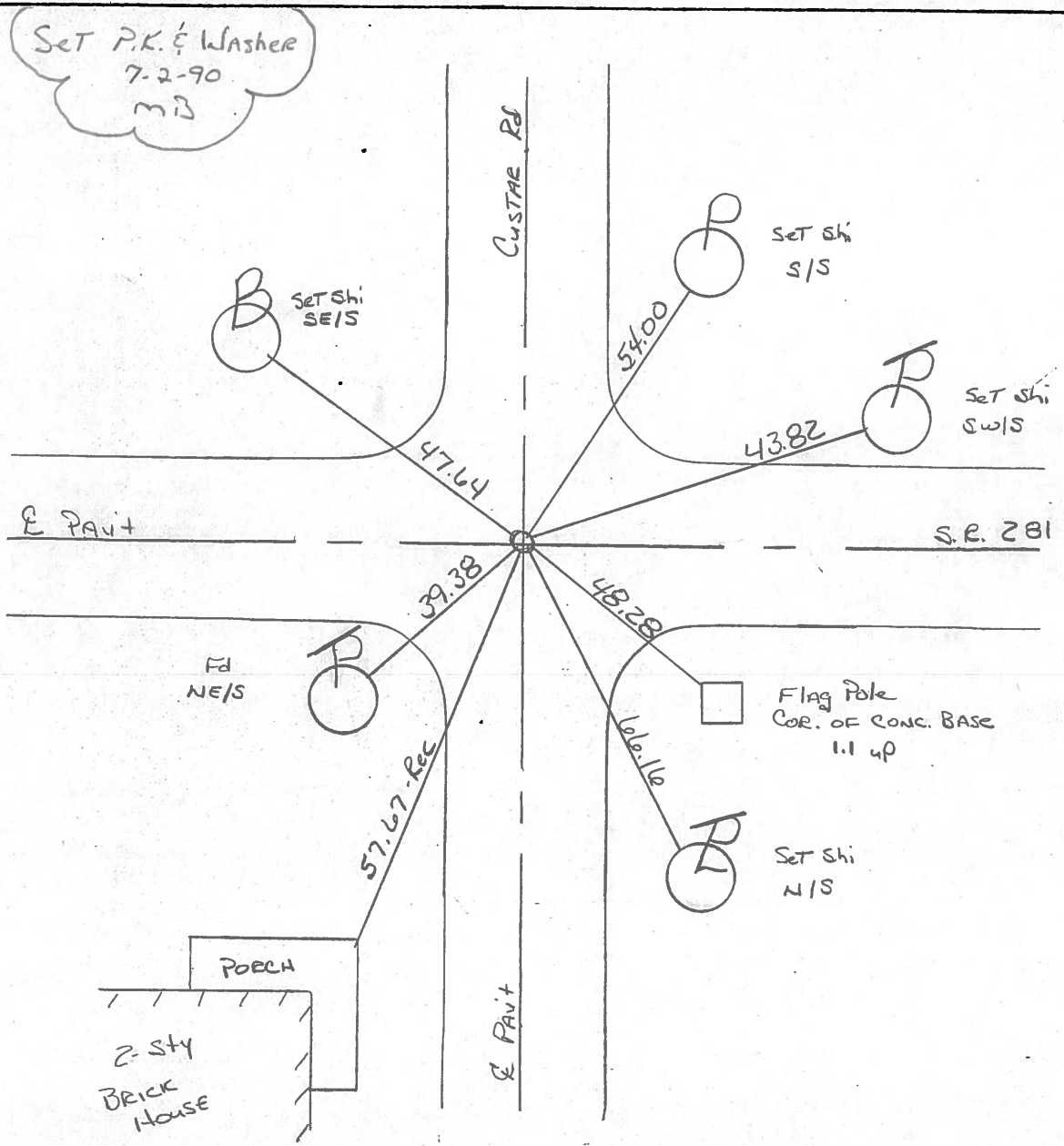
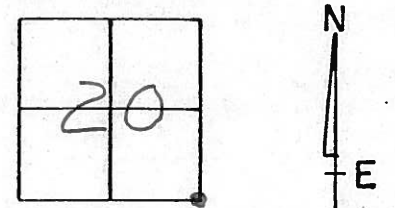
TYPE MONUMENT P.K. & Washer

ON SURFACE - BELOW yes

LEFT - PAV'T. - RIGHT yes

- TO - EDGE PAVEMENT

S.L.M. 106+87



ODOT. DISTRICT 2 SURVEY OFFICE

SHEET OF

OK-7-27-82 S.W.H.

County Wood S.R. 281

Date 5-19-81

Township MILTOX

Weather clear - 63° 73°

Section 20

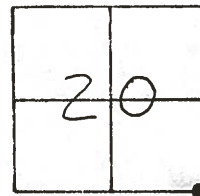
Temp. _____

T4N, R9E

Personnel S. Hoffmann

C. Lochrke

J. Householder



#6

SET P.K. & WASHER
8-12-82 S.W.H.

STA. 106 + 83.16

FOUND BOAT SPK @ SURFACE

"+" CUT IN
M. H. Rim, S. SIDE

SHINER
S.W. SIDE

STONE FOUND
STONE

36.72 - D

51.22
51.19 - D

46.23
46.20 - D

50.64
50.63 - D

SHINER
S.W. SIDE

R 281

SPK

39.38
39.37 - D

48.30
48.28 - D

57.67
57.65 - D

62.51

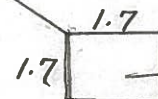
SHINER
N.E. SIDE

N.E. CORNER OF
5th BRICK FROM
BOTTOM

Porch

Brick
BIDG

COSTAR ROAD



1.1 High

CONC.
BASE FOR
STEEL SIGN
POST

FO. SHI.
NW/S

PERSONNEL TITLE PERSONNEL TITLE COUNTY Wood DATE OK-11-18-70
 CK. BY _____ S. R. #281 WEATHER _____
SILVESTER _____ SEC. 20 TEMP. _____
BURNSIDE _____
SMITH _____

DESCRIPTION CONTROL TIES ~ CUSTAR ~ JOB NO. _____
 LEFT CENTER LINE RIGHT

<p>STA. 106+83.16 R.R. SPIKE (INTERSECTION S.R. #281 & CUSTAR ROAD S.E. COR. SEC. 20 #148 MILTON TWP. T-4-N R-9-E #6</p> <p>#148</p>			<p>N.W. COR. CONC. SIGN BASE S.E. 48.1 SHINER P. POLE N.E. 51.1 STONE FDN. STORE N.E. 46.2 SHINER P. POLE S.W. 39.3 SHINER P. POLE N.E. 50.6 SHINER 12" WALNUT N.W. 67.7 WELL PUMP CASING 1" ABOVE CAP. S.W. 40.86</p>
<p>STA. 93+33.6 S.E. 1/8 Post SEC. 20 MILTON TWP. T-4-N R-9-E #5-A No ANGLE R.R. SPK. (WEST CORPORATION) (LINE CUSTAR)</p> <p>#147-A</p>			<p>STEEL SIGN POST N. 33.35 NORTH STEEL SIGN POST CORP SIGN S.E. 22. 3/4" IRON ROD { FLUSH WITH } N.W. 38 3/4" IRON ROD { GROUND } N.E. 38.</p>

PERSONNEL TITLE PERSONNEL TITLE

COUNTY Wood

DATE Oct 12-3-57

S. R. #281

WEATHER Swaden 3-22-61
Knebe 11-3-61

SEC.

TEMP. 2-28-64

DESCRIPTION

LEFT

CENTER LINE

RIGHT

JOB NO.

<p>Sta. 53+0.36 (old) = 53+04.2 S.W. Cor. sec. 20 Milton Twp. Stone. - Iron rod (Fd) $\Delta = 0^\circ - 30' E.$ (Roundhead Rd.)</p> <p>(4) #146</p>	<p>set P.K. Nail</p>	<p>S. to X on S. culvert about. 31. 31. S.E. to shiner in P.P. 62.65' 62. X in N.W. Cor. of S. culvert about. 25.26' 25. X in S.W. Cor. of N. culvert about. 24.</p>
<p>Sta. 79+87.4 S 1/4 post sec. 20 Milton Twp. Stone. - Iron pin (Fd) $\Delta = 0^\circ - 8 1/2' E.$ (Wentz Rd.)</p> <p>(5) #147</p>		<p>X on N.W. Cor. W. wall N.E. 35.40' 35. X on S.W. Cor. W. wall S.E. 35.02' 34. N.E. Cor. of house 2' above gnd. S.W. 47. Shiner in tele. Pole N.W. 43.</p>
<p>Sta. 93+33.6 S.E. 1/8 post sec. 20 U. Corp. line Custer (Fd I. Rod) No Angle</p> <p>(5-A) #147-A</p>	<p>set P.K. Nail</p>	<p>Face leaning Steel sign post N. 33.54' 33. Steel sign post S.W. 42.38' 42. N. steel sign post corp. sign S.E. 22.</p>
<p>Sta. 106+83.16 R.R. Spike in center of S.R. #281 & Custer Rd.</p> <p>(6) #148</p>	<p>(Fd)</p>	<p>Shiner in P. Pole N.E. 51. Well pump casing S.W. 41.03' 40.5 N. pt. Gas pump Island S.E. 69.5 N.E. to stone fld. store 46.20' 46.1 Shiner P. Pole S.W. 39.45 Shiner P. Pole N.E. 50.6 Shiner 12" Walnut N.W. 67.82 .70</p>