

O.D.O.T. DISTRICT 2 SURVEY OFFICE (USE ONLY)

PERSONNEL

REFERENCE NO. 6 A

SHEET 8 OF 15

NOTES HOMAN

DATE 7/3/12

ROUTE SR 281

H.C. ROUSOS

WEATHER CLOUDY

COUNTY WOOD

R.C. HOMAN

TEMP. 70°

TOWNSHIP MILTON

HARBAUGH

SECTION 21

DWG BY RHOADES

PID CHIP SEAL

T 4 N R 9 E

TYPE MONUMENT SM.R.R.SPIKE

ON SURFACE - ~~BELOW~~ ON

OFFSET \odot PAVEMENT 4.6' \pm : RT

4' TO RT EDGE PAVEMENT

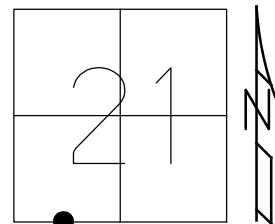
STATION: 120+15

HORZ.DATUM: NAD83 2011

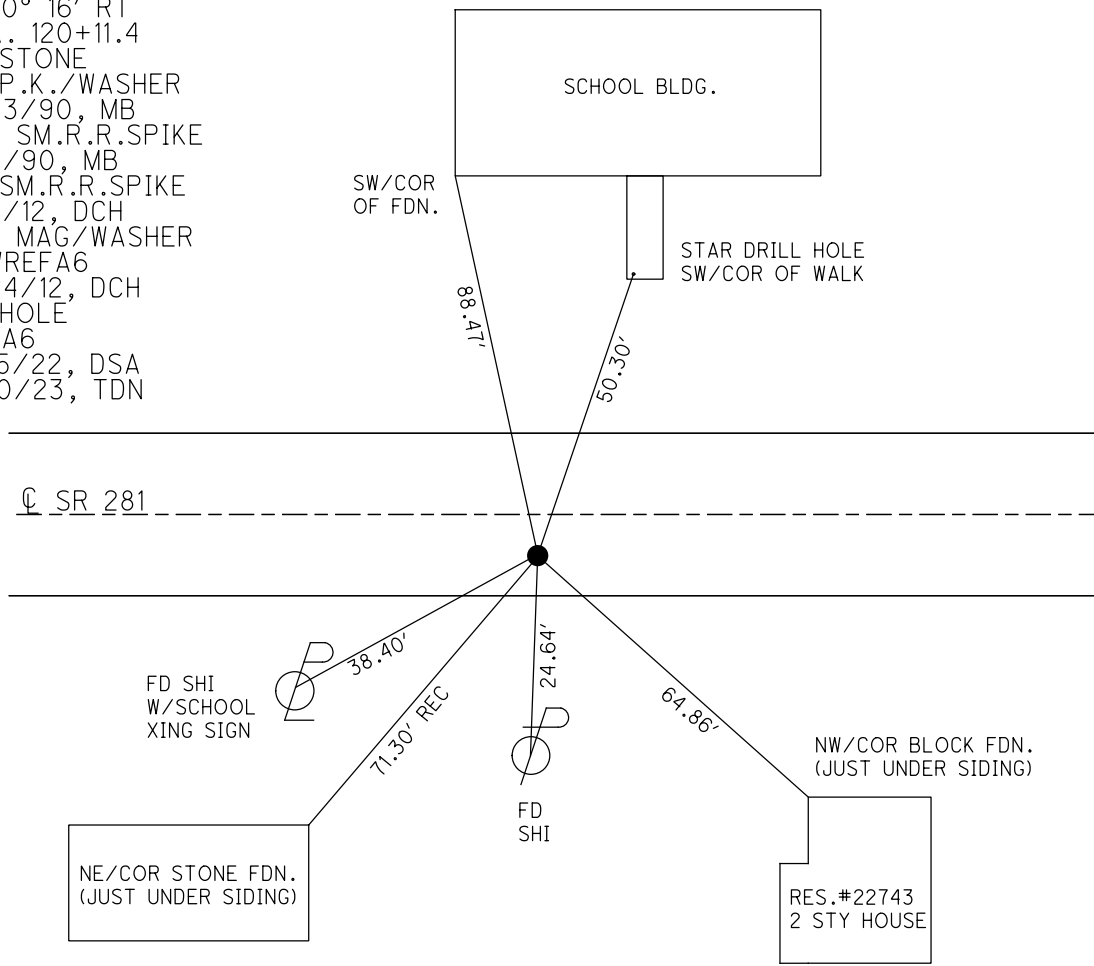
GEOID: NAVD88 2018

GRID: NORTHING: 592276.509

EASTING: 1600517.186



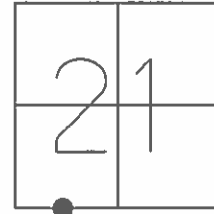
RECORD:
 $\Delta = 0^\circ 16'$ RT
 STA. 120+11.4
 FD STONE
 FD P.K./WASHER
 5/23/90, MB
 SET SM.R.R.SPIKE
 7/2/90, MB
 FD SM.R.R.SPIKE
 7/2/12, DCH
 SET MAG/WASHER
 NEWREFA6
 9/24/12, DCH
 FD HOLE
 REFA6
 7/15/22, DSA
 2/10/23, TDN



O.D.O.T. DISTRICT 2 SURVEY OFFICE (USE ONLY)

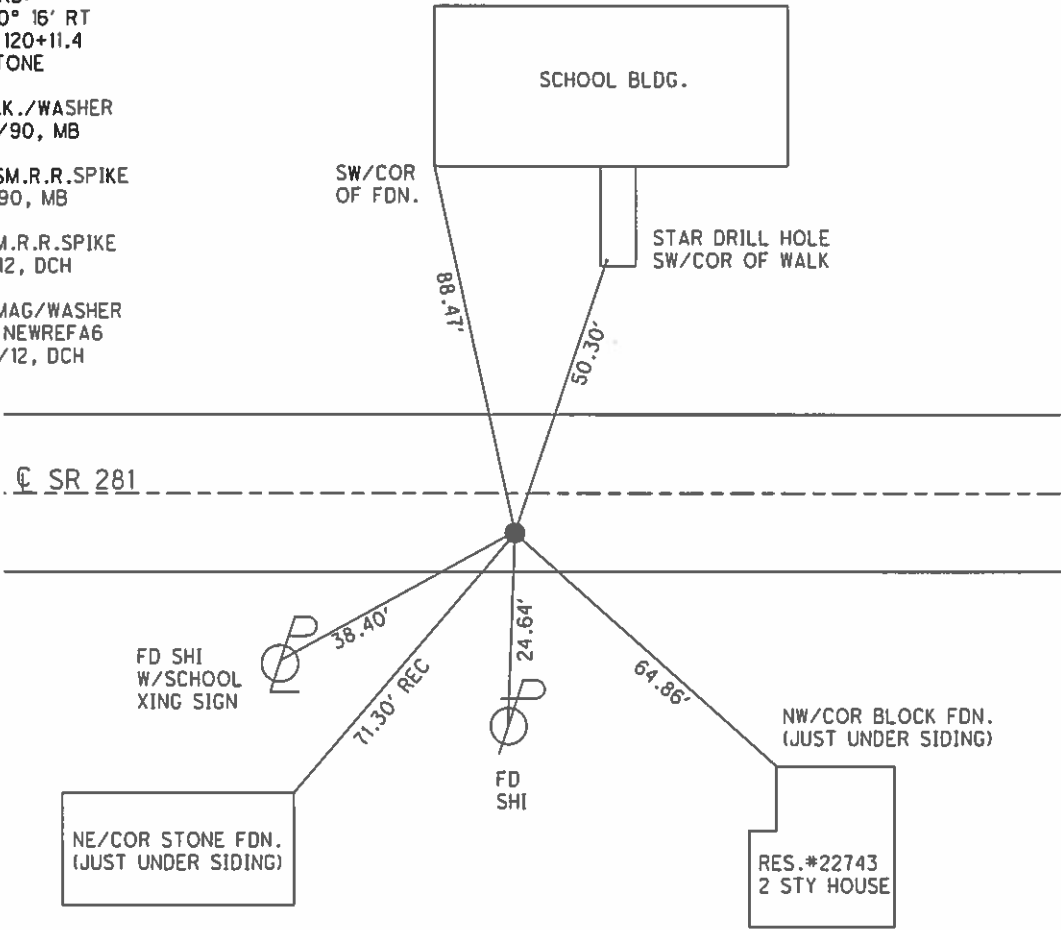
PERSONNEL _____ REFERENCE NO. 6 A SHEET 8 OF 15
 NOTES HOMAN DATE 7/3/12 ROUTE SR 281
 H.C. ROUSOS WEATHER CLOUDY COUNTY WOOD
 R.C. HOMAN TEMP. 70° TOWNSHIP MILTON
HARBAUGH SECTION 21
 T 4 N R 9 E

TYPE MONUMENT SM.R.R.SPIKE
 ON SURFACE - ~~BELOW~~ ON _____
~~LEFT~~ - Q PAV'T - RIGHT 4.6'
4.0' TO RT EDGE PAVEMENT
 S.L.M. 120+15



GRID: NORTHING: 592276.519 EASTING: 1600517.163

- RECORD:
 Δ = 0° 16' RT
 STA. 120+11.4
 FD STONE
- FD P.K./WASHER
 5/23/90, MB
- SET SM.R.R.SPIKE
 7/2/90, MB
- FD SM.R.R.SPIKE
 7/2/12, DCH
- SET MAG/WASHER
 GPS, NEWREFA6
 9/24/12, DCH



O.D.O.T. DISTRICT 2 SURVEY OFFICE

PERSONNEL _____ REFERENCE NO. 6A SHEET _____ OF _____

NOTES BARNHISEL

H.C. " " DATE 5-23-90 ROUTE 281

R.C. HOFFMAN WEATHER SUNNY COUNTY Wood

_____ TEMP. +65° TOWNSHIP Milton

_____ SECTION 21

_____ T 4 N R 9 E

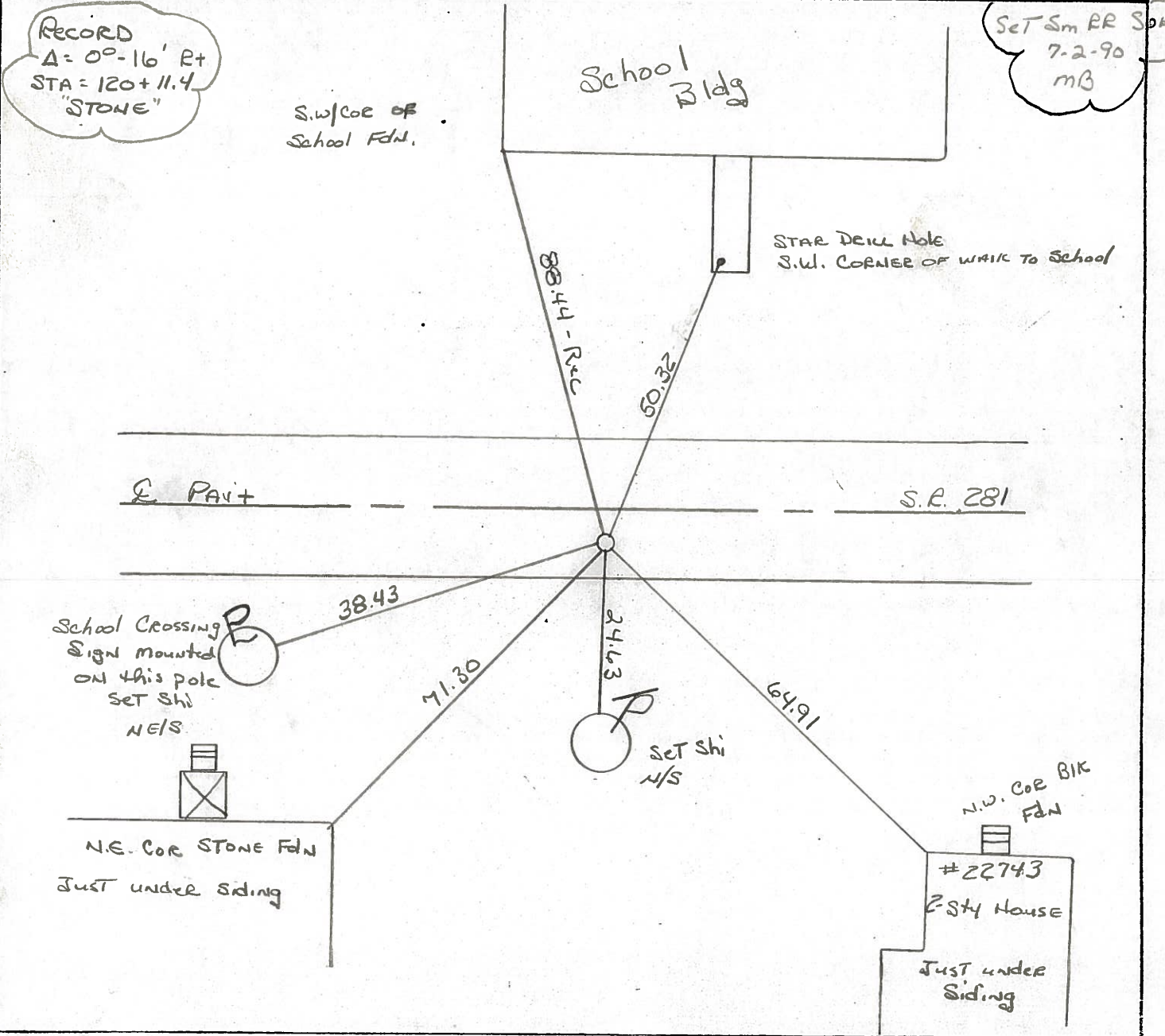
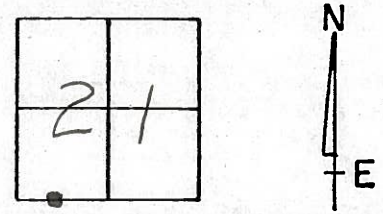
TYPE MONUMENT P.K. & Washers

ON SURFACE - ~~BELOW~~ yes

LEFT - 0 PAV'T. - RIGHT 4.6

4.0 TO RT EDGE PAVEMENT

S.L.M. 120+15



O.D.O.T. DISTRICT 2 SURVEY OFFICE

SHEET

OF

County Wood S.R. 281

Date 5-20-81

Township MILTON

Weather Clear

Section 21

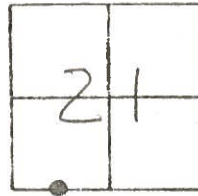
Temp. 45°

T4N, R9E

Personnel S. Hoffmann

C. Loehrke

J. Householder



7-27-82
+73° SW



SLM 120+29.5

STA 120+11.4

$\Delta = 0^\circ - 16'$ RT

"STONE" Fd. BOAT Spk
@ SURFACE 6'
N. of S. EDGE
PWT.

#6-A

School BLDG

SW COR School
FDN.

4.7' RT of
PWT.

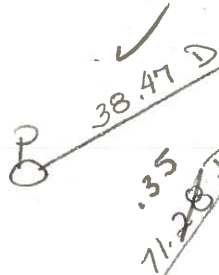
STAR DRILL HOLE
S.W. CORNER of WALK
TO SCHOOL

281

Set P.K./washer
8-12-82 SWK

Light pole
of school
CROSSING SIGN

SHINER
NE/S



N.E. COR.
STONE FDN.

SHINER
N/S

22743

N.W. COR. BIK
FDN.

O.D.O.T. DISTRICT 2 SURVEY OFFICE

SHEET OF

OK-7-27-82 -75° S.W.H.

County Wood S.R. 281

Date 5-20-81

Township MILTON

Weather Clear

Section 21

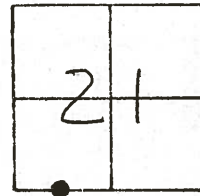
Temp. 45°

T4N, R9E

Personnel S. Hoffmann

C. Loehrke

L. Householder



#6-A

SET P.K. & WASHER
8-12-82 S.W.H.

STA. 120+11.4

$\Delta = 0^\circ - 16'$ RT.

"STONE" Fd. BOAT Spk
@ SURFACE 6'
N. of S. EDGE
Pavt.

School Bldg

SW COR School
FDN.

STAR DRILL HOLE
S.W. CORNER of WALK
TO SCHOOL

281

Light pole
of school
CROSSING SIGN

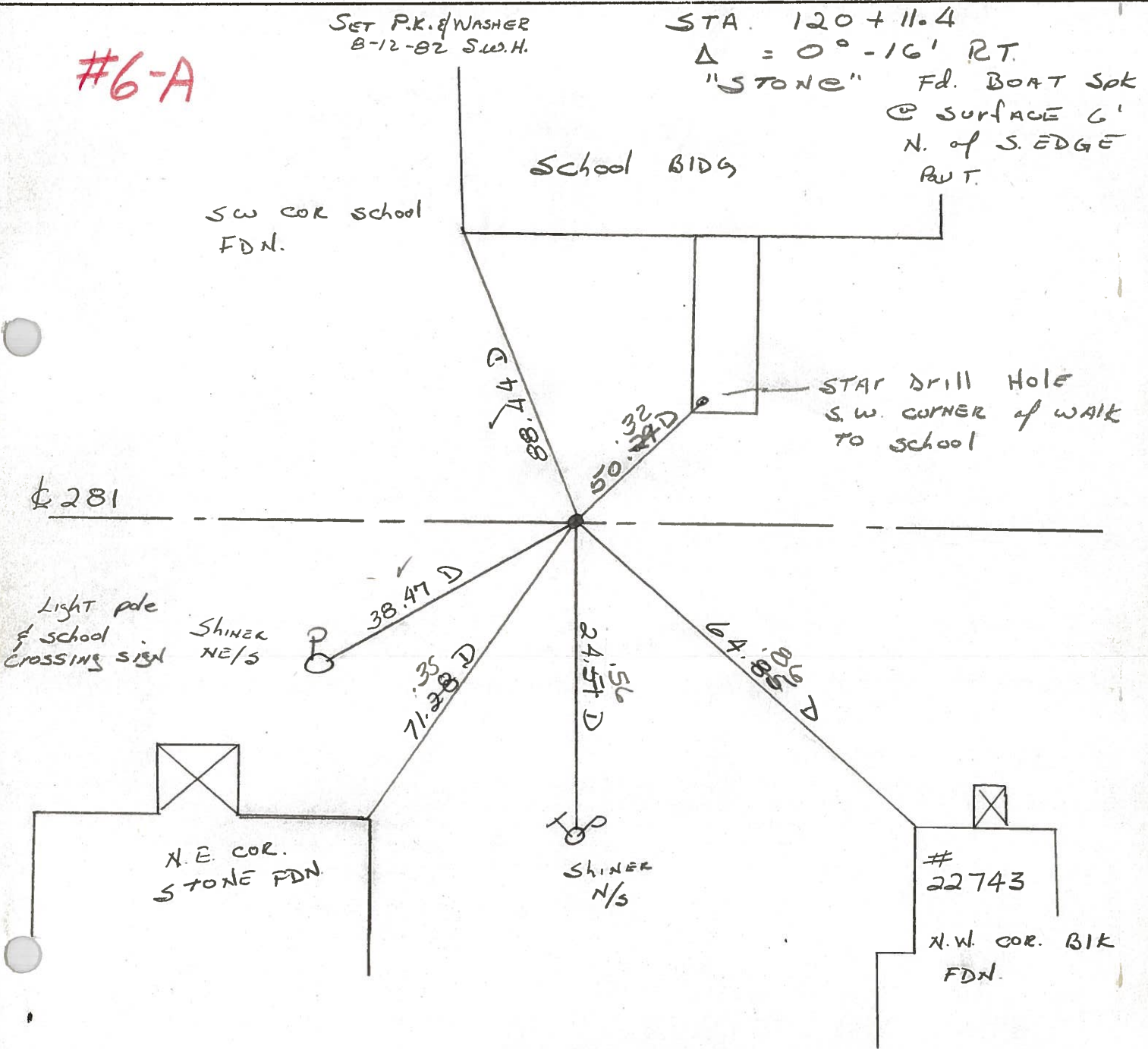
SHINER
N/S

N.E. COR.
STONE FDN.

SHINER
N/S

22743

N.W. COR. BIK
FDN.



PERSONNEL TITLE PERSONNEL TITLE
 CK. BY _____ COUNTY WOOD DATE OK-11-18-70
 SILVESTER _____ S. R. #281 WEATHER _____
 BURNSIDE _____ SEC. 21 & 22 TEMP _____
 SMITH _____

DESCRIPTION CONTROL TIES JOB NO. _____
 LEFT CENTER LINE RIGHT

<p>STA. 158+62.0 S.W. COR. SEC. 22 MILTON TWP. $\Delta = 2^\circ 21' 30''$ RT. IRON PIN - SET BOAT SPK. (MILTON ROAD) #150</p>		<p>#8</p>							<p>SHINER P. POLE N.W. 40.2 SHINER BRACE POLE S.W. 39.56 SHINER T. POLE S.E. 40.4 CONC. MON (LEANING) S.W. 49.1</p>
<p>5/4 Post SEC. 21 MILTON TWP. $\Delta = 1^\circ 51'$ RT. #149</p>		<p>#7</p>							<p>POINT GONE NEW BRIDGE</p>
<p>STA. 120+11.4 S.W. 1/8 Post SEC. 21 MILTON TWP. $\Delta = 0^\circ - 16'$ RT. "STONE" - SET BOAT SPK. #148-A</p>		<p>#6-A</p>							<p>S.W. COR. SCHOOL FON. N.W. 85 "X" S.E. COR. WALK TO SCHOOL 53 N.W. COR. BLK. FON. Ho. S.E. 64. N.E. COR. STONE FON. Ho. S.W. 71. SHINER T. POLE S. 24.</p>

PERSONNEL TITLE PERSONNEL TITLE

COUNTY Wood

DATE OK 12-4-51

S. R. #281

Swoopen 3-22-6
Silvester 2-28-6

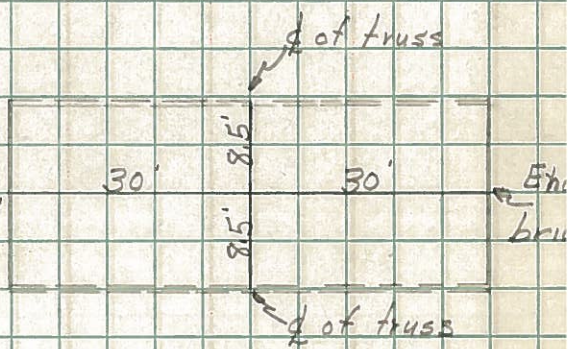
SEC. TEMP.

DESCRIPTION LEFT CENTER LINE RIGHT JOB NO.

				S.W. Cor. school Fdn. N.W.W.	88.0
Sta. 120+11.4				X on S.E. cor. walk to school	53.0
S.W. 1/8 post sec. 21. Milton Twp.				S.W. cor. 1 st step walk bet. Ch. & sch.	85.0
Stone Iron pin		(Fd. small		N.W. cor. block fdn. house S.E.	64.0
$\Delta = 0^{\circ} 16' E$		R.R. spk)		N.E. cor. stone fdn. house S.W.	71.0
				Shiner in T.P. S.	28.0

6-A #148-A

S. 1/4 post sec. 21 Milton Twp.				End of bridge	30'	30'	End of bridge
Shi. in $\$$ of bridge		No					
$\Delta = 1^{\circ} 51' E$							
(Gone! new bridge) (Beaver creek)							



7 #149

Sta. 158+62.0				Shiner in P.P. N.W.	40.28	40.28
S.W. Cor. sec. 22 Milton Twp.		(Fd. P.K.)		Shiner in br. pole S.W.		39.0
Iron pin				Shiner in T.P. S.E.	40.47'	40.47'
$\Delta = 2^{\circ} - 21\frac{1}{2}' E$		(Milton Rd.)		Conc. mon. S.W. (leaning)	49.12'	49.12'

8 #150

Sta. 185+28.39				N. To 2 on Top steel Sign Post	51.15	51.15
S 1/4 post Sec. 22 Milton Twp.		(Fd.)		S. " " " " " " " "		15.0
Set. R.R. spk.				S.S.E. "X" Cut in 60" Conc. Pipe		26.0
$\Delta = 0^{\circ} - 18' E$		P.I.		E.S.E. Shiner in East Guard Rail Post		31.0

9 #151

31.02	Shiner in Guard Rail Post S.E.			Shiner Guard Rail Post S.W. 18.22)		32.0
32.30	" " " " " " N.E.			N.N.E. "X" Cut in North end 60" Conc. Pipe		27.8
				Plumbed		33.60'
				S.E. "X" Near Top Retaining Wall (Plumbed)		