

O.D.O.T. DISTRICT 2 SURVEY OFFICE (USE ONLY)

PERSONNEL

REFERENCE NO. 8

SHEET 10 OF 15

NOTES NIESE DATE 2/10/23
 H.C. AUBLE WEATHER MISTY
 R.C. MILLER TEMP. 39°

ROUTE SR 281
 COUNTY WOOD
 TOWNSHIP MILTON
 SECTION 22

DWG BY RHOADES PID CHIP SEAL

T 4 N R 9 E

TYPE MONUMENT MAG SHANK

~~ON SURFACE~~ - BELOW 1/2"

OFFSET \varnothing PAVEMENT 7.6' ~~±~~ : RT

- TO - EDGE PAVEMENT

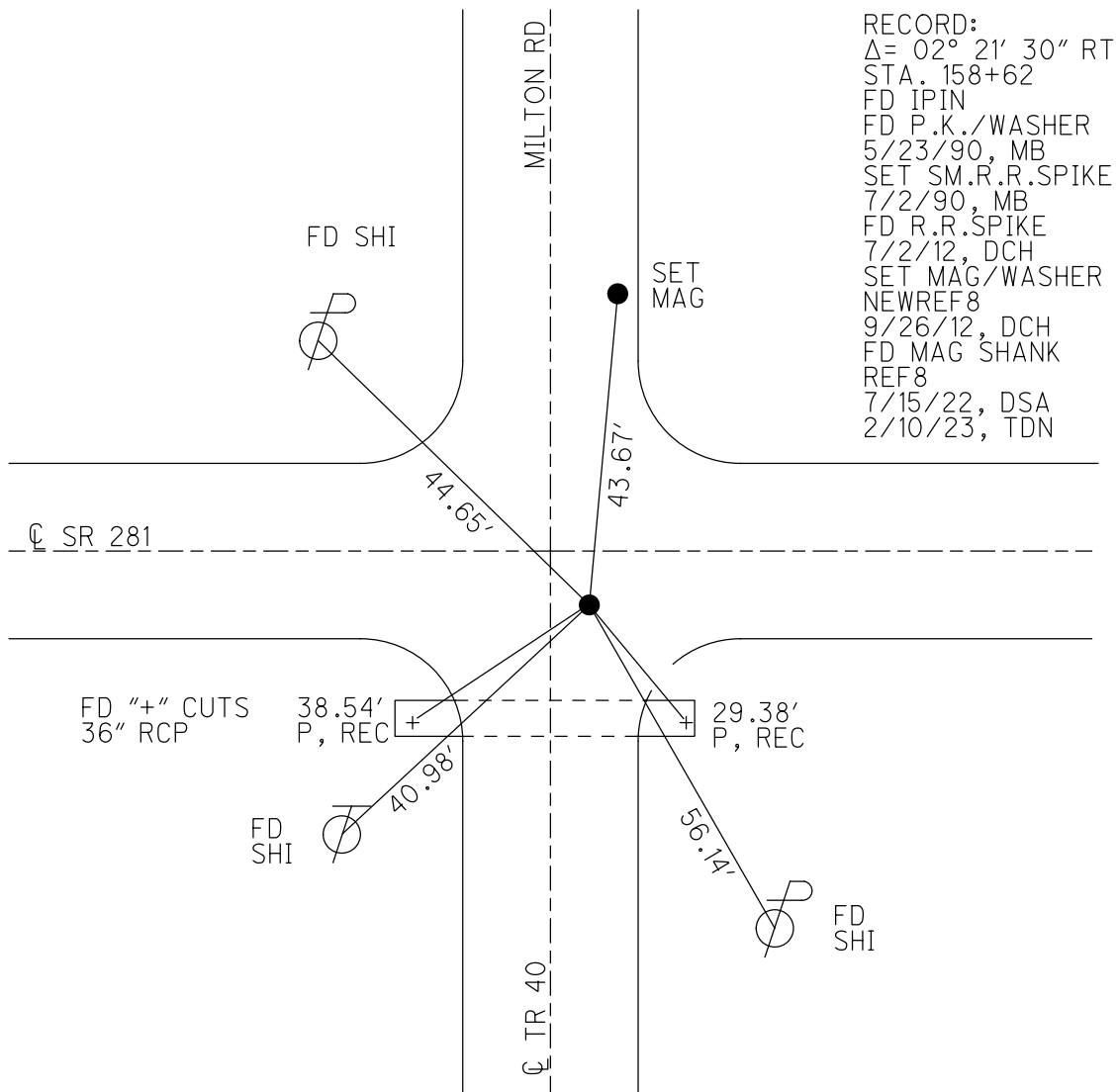
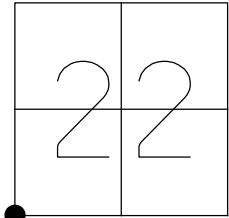
STATION: 159+65

HORZ. DATUM: NAD83 2011

GEOID: NAVD88 2018

GRID: NORTHING: 592144.555

EASTING: 1604464.085



O.D.O.T. DISTRICT 2 SURVEY OFFICE (USE ONLY)

PERSONNEL _____ REFERENCE NO. 8 SHEET 10 OF 15
 NOTES HOMAN DATE 7/3/12 ROUTE SR 281
 H.C. ROUSOS WEATHER CLOUDY COUNTY WOOD
 R.C. COUTCHER TEMP. 70° TOWNSHIP MILTON
HARBAUGH SECTION 22
T 4 N R 9 E

TYPE MONUMENT R.R.SPIKE

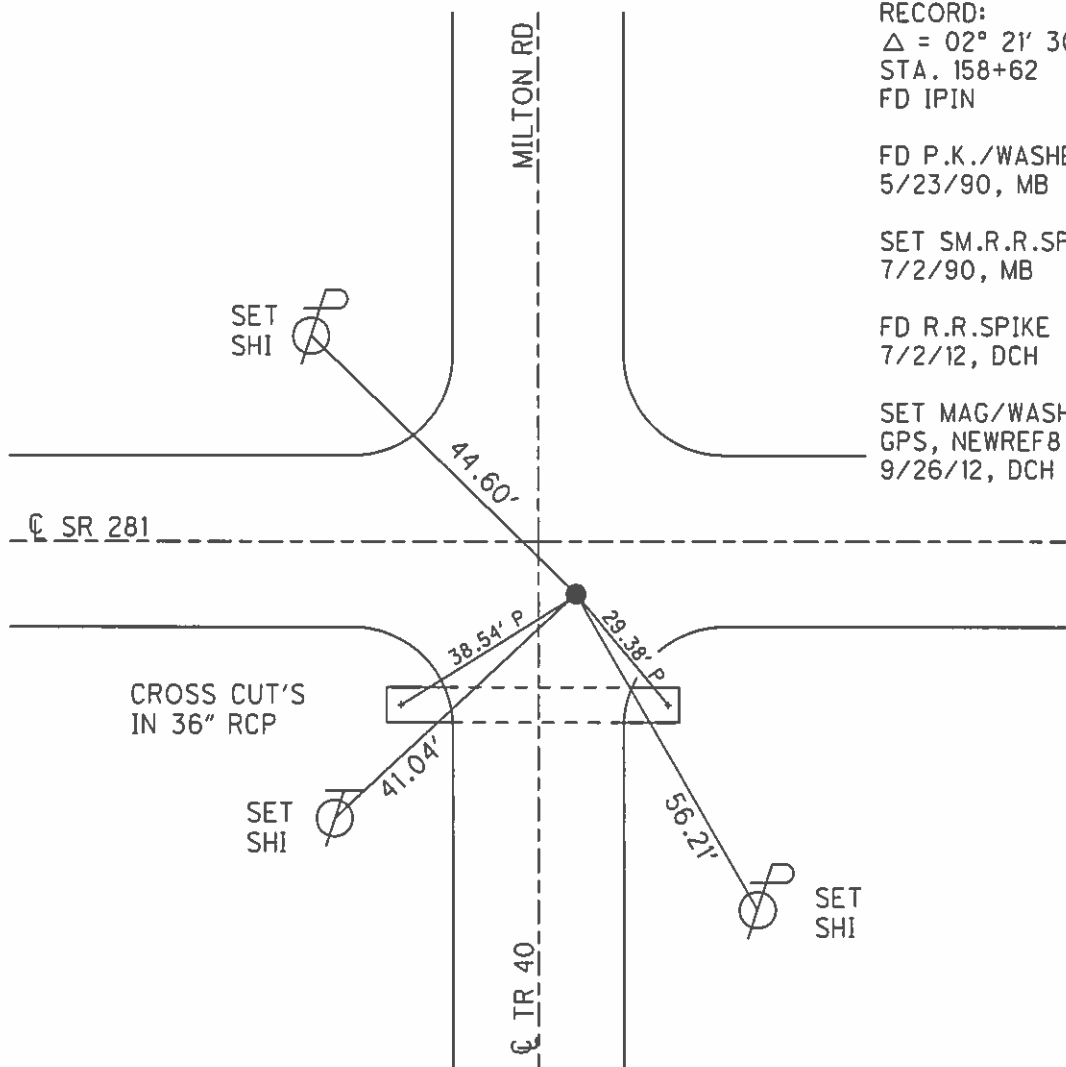
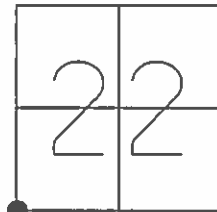
ON SURFACE - ~~BELOW~~ ON

~~LEFT~~ - C PAV'T - RIGHT 7.6', 3.8' LT OF C SOUTH

- TO - EDGE PAVEMENT

S.L.M. 159+65

GRID: NORTHING: 592144.576 EASTING: 1604464.038



RECORD:
 $\Delta = 02^\circ 21' 30''$ RT
 STA. 158+62
 FD IPIN
 FD P.K./WASHER
 5/23/90, MB
 SET SM.R.R.SPIKE
 7/2/90, MB
 FD R.R.SPIKE
 7/2/12, DCH
 SET MAG/WASHER
 GPS, NEWREF8
 9/26/12, DCH

CROSS CUT'S
 IN 36" RCP

SET
 SHI

SET
 SHI

SET
 SHI

O.D.O.T. DISTRICT 2 SURVEY OFFICE

PERSONNEL _____

REFERENCE NO. 8

SHEET _____ OF _____

NOTES BARNHISEL

H.C. _____

DATE 5-23-90

ROUTE 281

R.C. HOFFMAN

WEATHER SUNNY

COUNTY Wood

TEMP. +65°

TOWNSHIP Milton

SECTION _____

T 4 N R 9 E

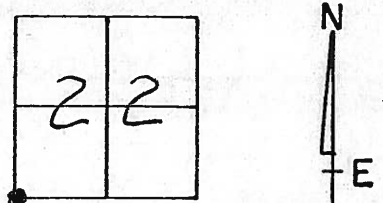
TYPE MONUMENT P.K. & Washer

ON SURFACE - BELOW yes

LEFT - & PAV'T. - RIGHT 7.6

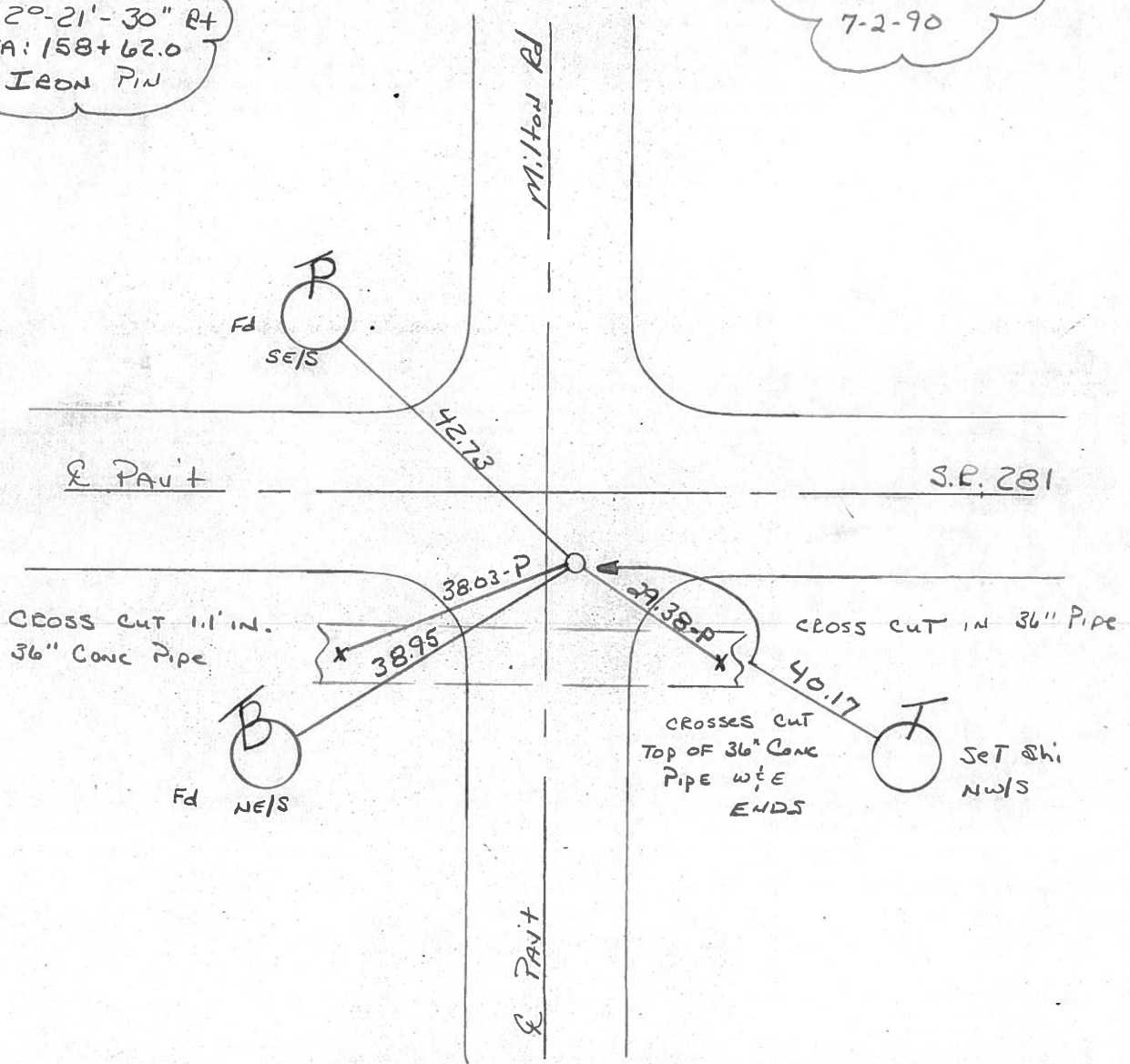
- TO - EDGE PAVEMENT

S.L.M. 159+65 38 LT OF & South



RECORD:
 $\Delta = 20-21-30$ RT
 STA: 158+62.0
 IRON PIN

Set Sm RR Spk
 7-2-90



Q.D.O.T. DISTRICT 2 SURVEY OFFICE

Sht. of

County WOOD S.R. 281

Township MILTON

Section 22

T4N, R9E

Personnel S. Hoffmann

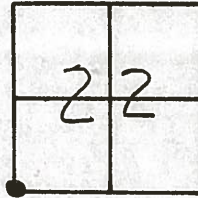
C. Loehrke

L. Householder

Date 5-20-81 OK 7-27-82 -75°-S.W.H.

Weather clear

Temp. 60°



#8

STA. 158 + 62.0

$\Delta = 2^\circ - 21' - 30''$ RT.

IRON PIN -

Fd. BOAT SPK @ surface

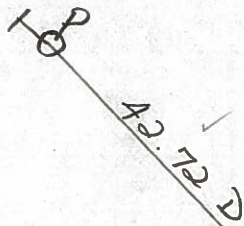
3.8' E. of E PAU. MILTON

8.1' S. of E PAU. 281

SET P.K. & WASHER

8-12-82 - S.W.H.

SHINER
S.E/S



281

38.47
37.92-P

CROSS CUT
TOP of 36" CONG.
PIPE @ W. & E.
EXIDS.



38.95
38.92 D

TO
E BRACE Pole

MILTON ROAD

40.37 D

SHINER
N.W/S

SHINER
N.E/S

PERSONNEL	TITLE	PERSONNEL	TITLE	COUNTY	DATE
CK. BY				WOOD	OK-11-18-70
SILVESTER				S. R. #281	WEATHER
BURNSIDE				SEC. 21 & 22.	TEMP.
SMITH					

DESCRIPTION CONTROL TIES JOB NO. _____

LEFT	CENTER LINE	RIGHT
<p>STA. 158+62.0 S.W. COR. SEC. 22 MILTON TWP. $\Delta = 2^\circ 21' 30''$ RT. IRON PIN - SET BOAT SPK. (MILTON ROAD) #150</p>	<p>#8</p>	<p>SHINER P. POLE N.W. 40.2 SHINER BRACE POLE S.W. 39.5 SHINER T. POLE S.E. 40.4 CONC. MON (LEANING) S.W. 49.1</p>
<p>5/4 POST SEC. 21 MILTON TWP. $\Delta = 1^\circ 51'$ RT. #149</p>	<p>#7</p>	<p>POINT GONE NEW BRIDGE</p>
<p>STA. 120+11.4 S.W. 1/8 POST SEC. 21 MILTON TWP. $\Delta = 0^\circ - 16'$ RT. "STONE" - SET BOAT SPK. #148-A</p>	<p>#6-A</p>	<p>S.W. COR. SCHOOL FDN. N.N.W. 8E "X" S.E. COR. WALK TO SCHOOL 53 N.W. COR. BLK. FDN. Ho. S.E. 64 N.E. COR. STONE FDN. Ho. S.W. 71 SHINER T. POLE S. 24</p>

PERSONNEL TITLE PERSONNEL TITLE

COUNTY Wood

DATE OK 12-4-5

S. R. #281

Swoobon 3-22-6
Silvester 2-28-6
WEATHER

SEC.

TEMP.

DESCRIPTION

LEFT

CENTER LINE

RIGHT

JOB NO.

Sta. 120+11.4

S.W. 1/4 post sec. 21 Milton

Twp. Stone Iron pin

$\Delta = 0^{\circ} 16' E$

(Fd. small
R.R. spk)

S.W. Cor school Fdn. N.W.W.

88.1

X on S.E. cor. walk to school

53.

S.W. cor. 1st step walk bet. Ch. & sch.

85.

N.W. cor. block fdn. house S.E.

64.

N.E. cor. stone fdn. house S.W.

71.

Shiner in T.P. S.

28.

6-A

#148-A

S. 1/4 post sec. 21 Milton

Twp. Sh. in Δ of bridge

$\Delta = 1^{\circ} 51' E$

(Gone! new bridge) (Beaver creek)

No

End of
bridge

30'

85'

30'

End
br

Δ of truss

7

#149

Sta. 158+62.0

S.W. Cor. sec. 22 Milton (Fd. P.K.)

Twp. Iron pin

$\Delta = 2^{\circ} - 21\frac{1}{2}' E$ (Milton Rd.)

Shiner in P.P. N.W. 40.28 40.1

Shiner in br. pole S.W. 39.1

Shiner in T.P. S.E. 40.47' 40.1

Conc. mon. S.W. (leaning) 49.12' 49.1

8

#150

Sta. 185+28.39

S. 1/4 post. Sec. 22 Milton (Fd.)

Twp. Set. R.R. spk.

$\Delta = 0^{\circ} - 18' E$ P.I.

N. Top on Top Steel Sign Post 5TK. 15'

S. " " " " " " " " 15'

S.S.E. "X" Cut in S end 60" Conc. Pipe. 26'

E.S.E. Shiner in East Guard Rail Post (Plum be

(Shiner Guard Rail Post N. 1787) 31.

E.N.E. Shiner in East Guard Rail Post

Shiner Guard Rail Post S.W. 18.22) 32.

N.N.E. "X" Cut in North end 60" Conc. Py

plumbed 27.8

S.E. "V" Near Top Retaining Wall (Plum be

9

#151

31.02 Shiner in Guard Rail Post S.E.

32.30 " " " " " N.E.