

O.D.O.T. DISTRICT 2 SURVEY OFFICE (USE ONLY)

PERSONNEL

REFERENCE NO. 9

SHEET 11 OF 15

NOTES NIESE

DATE 2/15/23

ROUTE SR 281

H.C. AUBLE

WEATHER WINDY

COUNTY WOOD

R.C. MILLER

TEMP. 61°

TOWNSHIP MILTON

SECTION 22

DWG BY RHOADES

PID CHIP SEAL

T 4 N R 9 E

TYPE MONUMENT MAG/WASHER

ON SURFACE - ~~BELOW~~ ON

OFFSET 0.6' ~~±~~ : RT

9' TO RT EDGE PAVEMENT

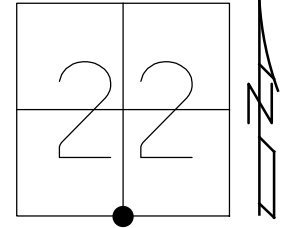
STATION: 186+33

HORZ.DATUM: NAD83 2011

GEOID: NAVD88 2018

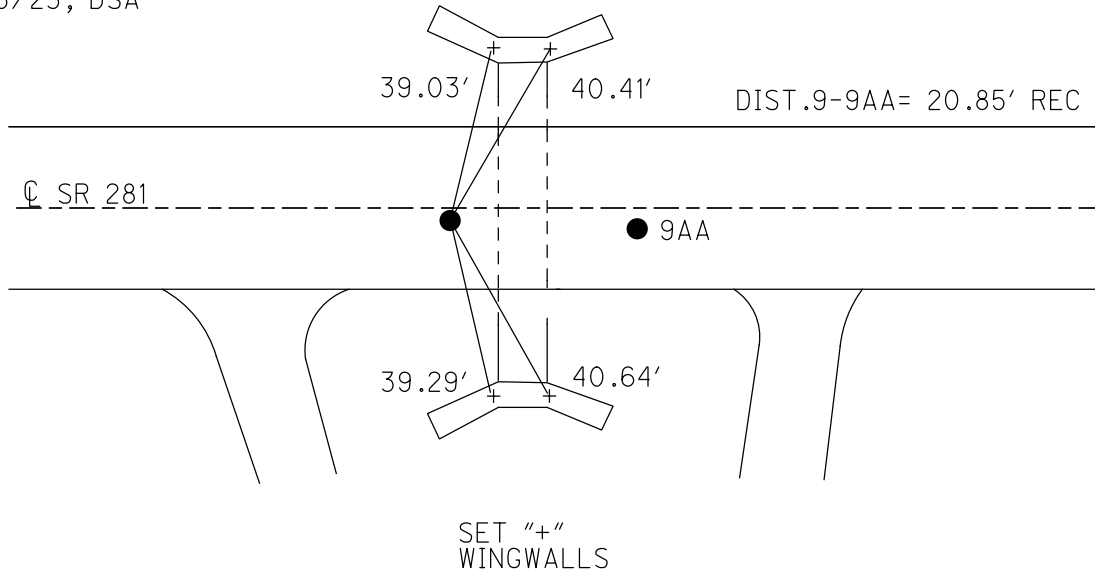
GRID: NORTHING: 592138.660

EASTING: 1607130.411



RECORD:

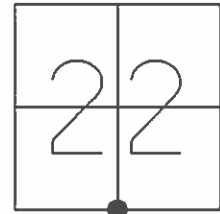
Δ = 0° 18' RT
 STA. 185+28.39
 FD P.K./WASHER
 5/23/90, MB
 SET SM.R.R.SPIKE
 6/19/90, MB
 FD P.K./WASHER
 7/2/12, DCH
 SET MAG/WASHER
 NEWREF9
 9/26/12, DCH
 FD MAG NAIL
 REF9
 7/15/22,
 2/15/23, DSA



O.D.O.T. DISTRICT 2 SURVEY OFFICE (USE ONLY)

PERSONNEL _____ REFERENCE NO. 9 SHEET 11 OF 15
 NOTES HOMAN DATE 7/3/12 ROUTE SR 281
 H.C. ROUSOS WEATHER CLOUDY COUNTY WOOD
 R.C. COUTCHER TEMP. 75° TOWNSHIP MILTON
HARBAUGH SECTION 22
 T 4 N R 9 E

TYPE MONUMENT P.K./WASHER
 ON SURFACE - ~~BELOW~~ ON
~~LEFT~~ - Q PAV'T - RIGHT 0.6'
9.0' TO RT EDGE PAVEMENT
 S.L.M. 186+33



GRID: NORTHING: 592138.638 EASTING: 1607130.420

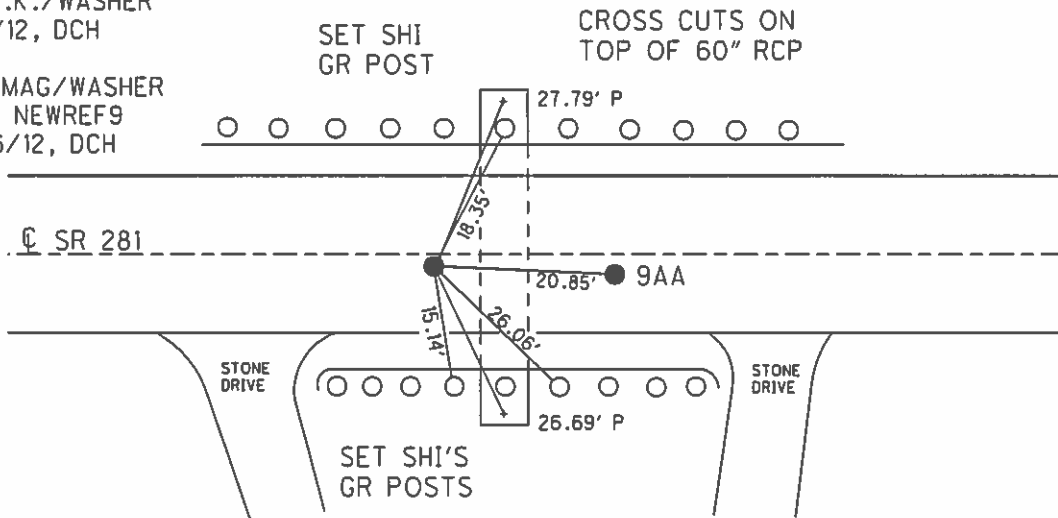
RECORD:
 $\Delta = 0^\circ 18' RT$
 STA. 185+28.39

FD P.K./WASHER
 5/23/90, MB

SET SM.R.R.SPIKE
 6/19/90, MB

FD P.K./WASHER
 7/2/12, DCH

SET MAG/WASHER
 GPS, NEWREF9
 9/26/12, DCH



O.D.O.T. DISTRICT 2 SURVEY OFFICE

PERSONNEL _____

REFERENCE NO. 9

SHEET _____ OF _____

NOTES BARNHISEL

H.C. _____

DATE 5-23-90

ROUTE 281

R.C. HOFFMAN

WEATHER SUNNY

COUNTY Wood

TEMP. +65°

TOWNSHIP Milton

SECTION 22

T 4 N R 9 E

TYPE MONUMENT P.K. & Washer / NAIL

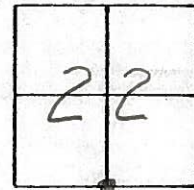
ON SURFACE - BELOW yes / yes

LEFT - CL PAV'T. - RIGHT 0.6 / 1.9

9.0 TO RT EDGE PAVEMENT

S.L.M. 186+33 TO P.K.

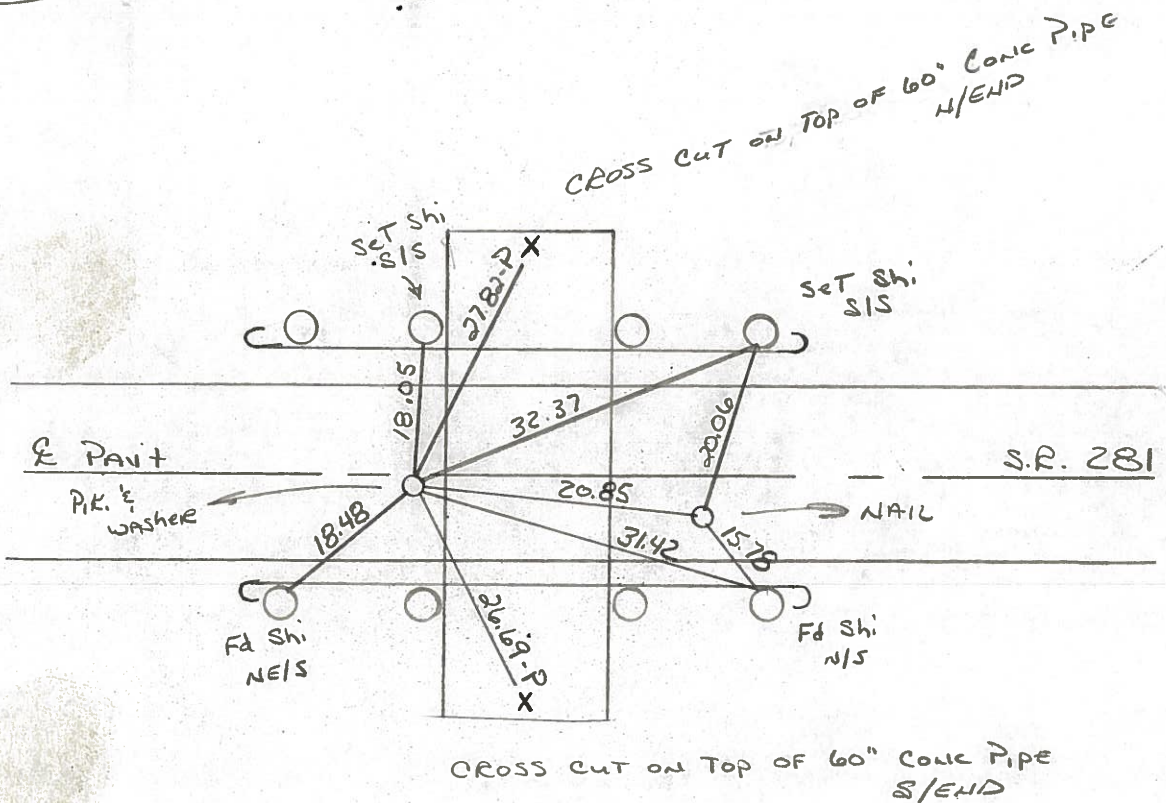
9
9-AA



RECORD
 $\Delta = 0^\circ - 18'$ RT
 STA: 185+28.37

SET SM RE SPK
 6-19-90
 MB

SET P.K. NAIL
 6-19-90
 MB



Q.D.O.T. DISTRICT 2 SURVEY OFFICE

Sht. ___ of ___

County Wood S.R. 281

Date 5-20-81

Township MILTON

Weather Clear

Section 22

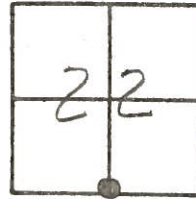
Temp. 60°

T4N, R9E

Personnel S. Hoffman

C. Doehrke

L. Householder



7-27-82
SW 1/4
+73°

#9

SKM 186+58

STA. 185+28.39

$\Delta = 0^\circ - 18' RT.$

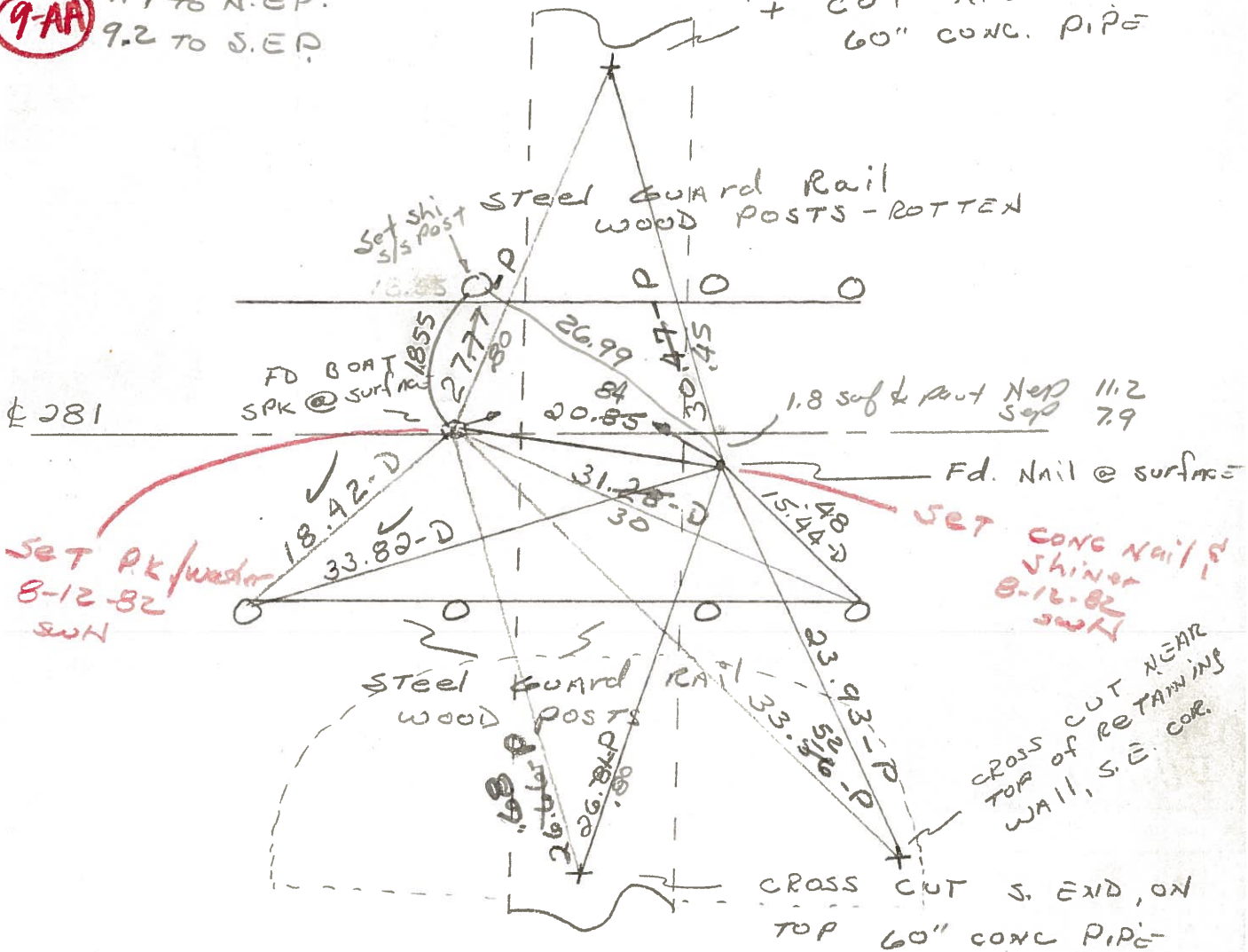
9-AA

out & put

9.7 TO N.E.P.

9.2 TO S.E.P.

"+" CUT N. END, ON TOP
60" CONC. PIPE



Q.D.O.T. DISTRICT 2 SURVEY OFFICE

Sht. ___ of ___

OK-7-27-82 - 75°-S.W.H.

County Wood S.R. 281

Date 5-20-81

Township MILTON

Weather Clear

Section 22

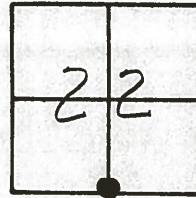
Temp. 60°

T4N, R9E

Personnel S. Hoffman

C. Loehrke

L. Householder



#9

9AA

STA. 185+28.39

$\Delta = 0^\circ - 18' RT.$

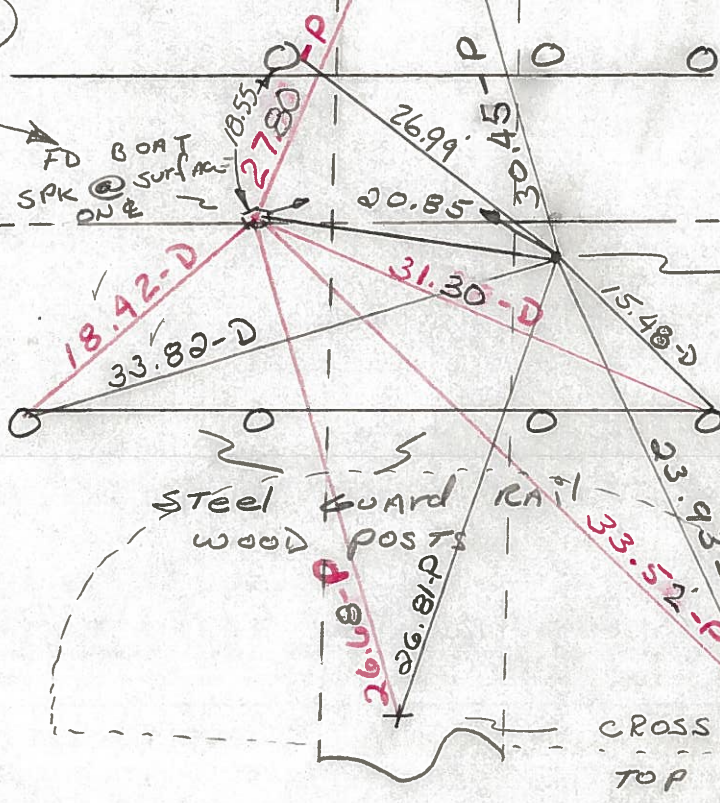
"+" CUT N. END, ON TOP
60" CONC. PIPE

SET P.K. & WASHER
8-12-82
S.W.H.

281

FD BOAT
SPK @ SURFACE
ONE

Steel Guard Rail
WOOD POSTS - ROTTEN



Fd. Nail @ surface
1.8' S. of PAUT
Re-Set Nail & SHI.
8-12-82
S.W.H.

CROSS CUT NEAR
TOP of RETAINING
WALL, S.E. COR.

CROSS CUT S. END, ON
TOP 60" CONC PIPE

PERSONNEL TITLE PERSONNEL TITLE COUNTY WOOD DATE OK-11-18-70
CK. BY _____
SILVESTER _____
BURNSIDE _____
SMITH _____
 S. R. #281 WEATHER _____
 SEC. 22 TEMP. _____

DESCRIPTION CONTROL TIES LEFT CENTER LINE RIGHT JOB NO. _____

DESCRIPTION	LEFT	CENTER LINE	RIGHT	JOB NO.
STA. 198+62.6 S.E. 1/4 Post SEC. 22 MILTON TWP. NO ANGLE 1959 DUG & FD. STONE SET BOAT SPIKE	#151-A	#9-A	CONC. MON. N.N.E. 26.62 SHINER P. POLE N.W. 63.41 CONC. MON. S.E. 47.32 NEAR EDGE METAL SIGN POST S. 26.54	
STA. 135+28.39 S 1/4 Post SEC. 22 MILTON TWP. $\Delta = 0^\circ - 18' RT.$ BOAT SPIKE	#151	#9	"X" S. END 60" CONC. PIPE S.S.E. 26.7 SHINER GUARD RAIL POST S.E. 31.0 SHINER GUARD RAIL POST N.E. 32.3 SHINER GUARD RAIL POST N. 17.9 "X" N. END 60" CONC. PIPE N.N.E. 27.8 "X" NEAR TOP RETAINING WALL S.E. 33.0 SHINER GUARD RAIL POST S.W. 18.3	

PERSONNEL	TITLE	PERSONNEL	TITLE

COUNTY Wood DATE OK 12-4-5
 S. R. #281 Sweeney 3-22-6
Silvester 2-28-6
 WEATHER
 SEC. _____ TEMP. _____

DESCRIPTION LEFT CENTER LINE RIGHT JOB NO.

Sta. 120+11.4			S.W. Cor. school Fdn. N.W.W.	88.4
S.W. 1/8 post sec. 21 Milton			X on S.E. cor. walk to school	53.
Twp. Stone Iron pin			S.W. cor. 1 st step walk bet. Ch. & sch.	86.
$\Delta = 0^{\circ} 16' \text{ Rt.}$		(Fd. small	N.W. cor. block fdn. house S.E.	64.
		R.R. spk)	N.E. cor. Stone fdn. house S.W.	71.
			Shiner in T.P. S.	23.

6-A #148-A

S. 1/4 post sec. 21 Milton			End of	30'	30'	End of
Twp. Shi. in Δ of bridge		No	bridge			br
$\Delta = 1^{\circ} 51' \text{ Rt.}$						
(Gone! new bridge) (Beaver creek)						

7 #149

Sta. 158+62.0			Shiner in P.P. N.W.	40.28	40.28
S.W. Cor. sec. 22 Milton		(Fd. P.K.)	Shiner in br. pole S.W.		39.2
Twp. Iron pin			Shiner in T.P. S.E.	40.47'	40.47'
$\Delta = 2^{\circ} 21/2' \text{ Rt.}$		(Milton Rd.)	Conc. mon. S.W. (leaning)	49.12'	49.12'

8 #150

Sta. 185+28.39			N. To c on Top steel Sign Post	51K. 150	150
S. 1/4 post Sec. 22 Milton		(Fd.)	S. " " " " " " " "		150
Twp. Set. R.R. spk.			S.S.E. "X" Cut in S end 60" Conc. Pipe.		26.
$\Delta = 0^{\circ} 18' \text{ Rt.}$		P.I.	E.S.E. Shiner in East Guard Rail Post		(Plum be

9 #151

31.02	Shiner in Guard Rail Post S.E.		Shiner Guard Rail Post S.W. (B. 22)		32.
32.30	" " " " " N.E.		N.N.E. "X" Cut in North end 60" Conc. Pipe		27.8
			Plumbed		
			S.E. "V" Near Top Retaining Wall (Plumbe		