

O.D.O.T. DISTRICT 2 SURVEY OFFICE (USE ONLY)

PERSONNEL

REFERENCE NO. 10

SHEET 14 OF 15

NOTES HOMAN
 H.C. ROUSOS
 R.C. COUTCHER
HARBAUGH

DATE 7/3/12
 WEATHER CLOUDY
 TEMP. 75°

ROUTE SR 281
 COUNTY WOOD
 TOWNSHIP MILTON
 SECTION 23

DWG BY RHOADES PID CHIP SEAL

T 4 N R 9 E

TYPE MONUMENT SM.R.R.SPIKE

ON SURFACE - ~~BELOW~~ ON

OFFSET \varnothing PAVEMENT 4.5' ~~±~~ : RT

~~TO~~ ~~EDGE PAVEMENT~~

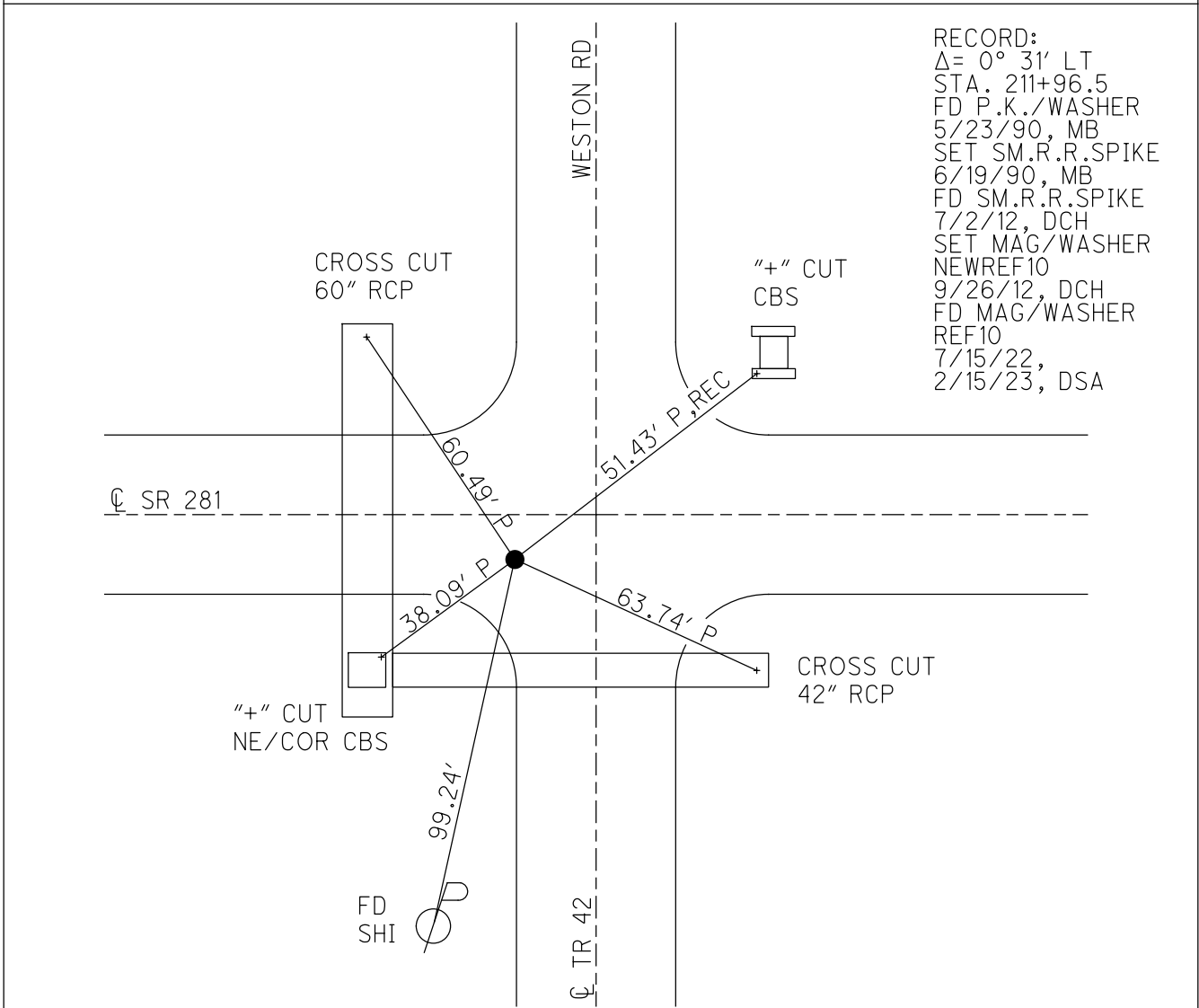
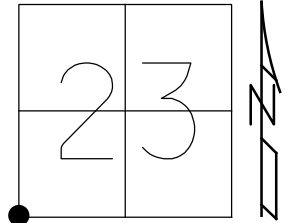
STATION: 213+01

HORZ.DATUM: NAD83 2011

GEOID: NAVD88 2018

GRID: NORTHING: 592118.850

EASTING: 1609798.099

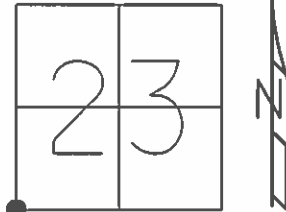


RECORD:
 $\Delta = 0^\circ 31' \text{ LT}$
 STA. 211+96.5
 FD P.K./WASHER
 5/23/90, MB
 SET SM.R.R.SPIKE
 6/19/90, MB
 FD SM.R.R.SPIKE
 7/2/12, DCH
 SET MAG/WASHER
 NEWREF10
 9/26/12, DCH
 FD MAG/WASHER
 REF10
 7/15/22,
 2/15/23, DSA

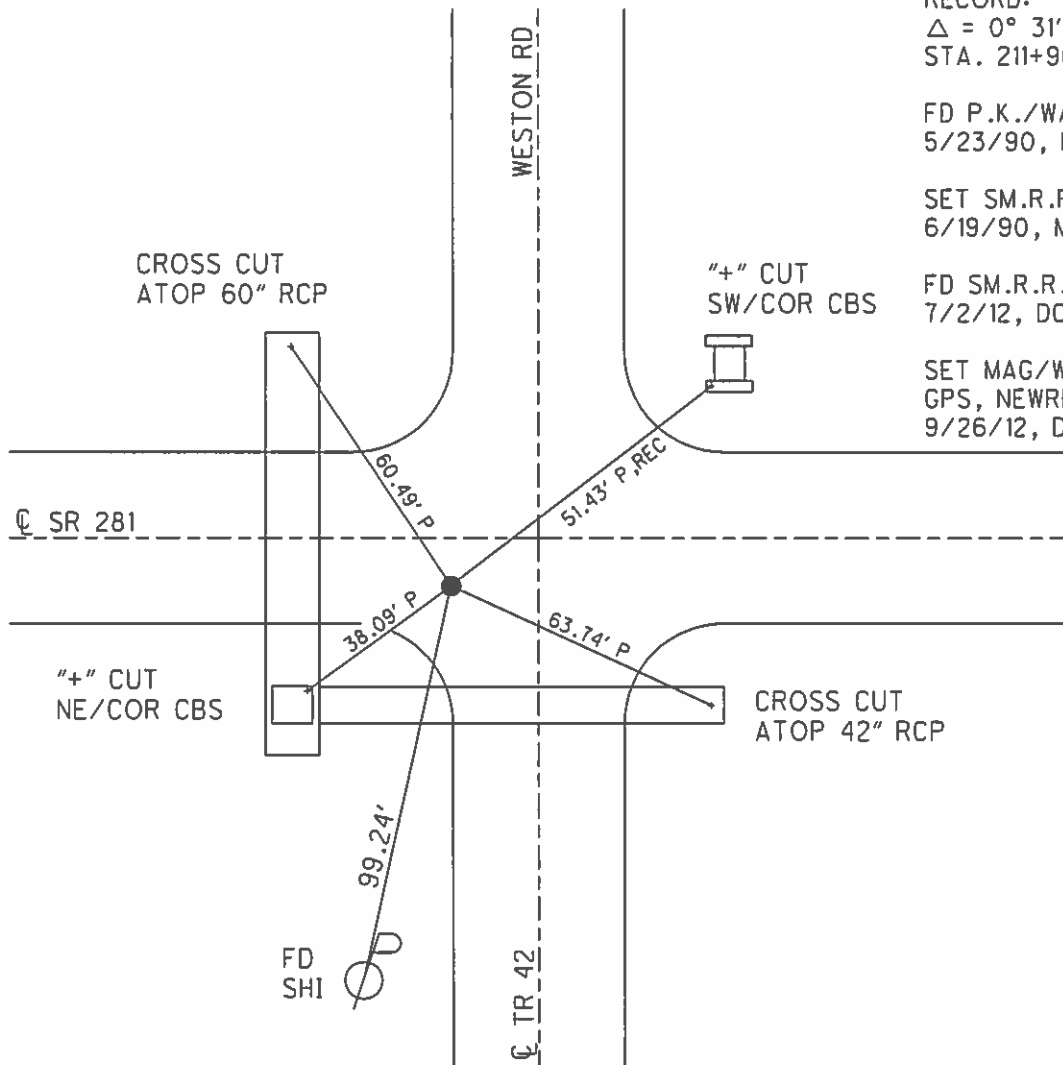
O.D.O.T. DISTRICT 2 SURVEY OFFICE (USE ONLY)

PERSONNEL _____ REFERENCE NO. 10 SHEET 14 OF 15
 NOTES HOMAN DATE 7/3/12 ROUTE SR 281
 H.C. ROUSOS WEATHER CLOUDY COUNTY WOOD
 R.C. COUTCHER TEMP. 75° TOWNSHIP MILTON
HARBAUGH SECTION 23
 T 4 N 9 E

TYPE MONUMENT SM.R.R.SPIKE
 ON SURFACE - ~~BELOW~~ ON
~~LEFT~~ - ☉ PAV'T - RIGHT 4.5'
- TO - EDGE PAVEMENT
 S.L.M. 213+01



GRID: NORTHING: 592118.891 EASTING: 1609798.054



RECORD:
 $\Delta = 0^\circ 31' \text{ LT}$
 STA. 211+96.5
 FD P.K./WASHER
 5/23/90, MB
 SET SM.R.R.SPIKE
 6/19/90, MB
 FD SM.R.R.SPIKE
 7/2/12, DCH
 SET MAG/WASHER
 GPS, NEWREF10
 9/26/12, DCH

O.D.O.T. DISTRICT 2 SURVEY OFFICE

PERSONNEL _____

REFERENCE NO. 10

SHEET _____ OF _____

NOTES BARNHISEL

H.C. " "

R.C. Hoffman

DATE 5-23-90

WEATHER SUNNY

TEMP. +65°

ROUTE 281

COUNTY WOOD

TOWNSHIP MILTON

SECTION 23

T4 N R 9 E

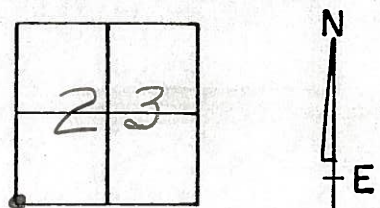
TYPE MONUMENT P.K. & Washer

ON SURFACE - ~~BELOW~~ YES

~~LEFT - & PAV'T.~~ - RIGHT 4.5

~~TO~~ - EDGE PAVEMENT

S.L.M. 213+01 ON W. Edge of Pav't NORTH



Set Sm RR S PK
6-19-90
MB

Recoed
 $\Delta = 0^{\circ}-31' \text{ Lt}$
STA: 211+96.5

CROSS CUT ON TOP
OF 60" CONC PIPE
N/END

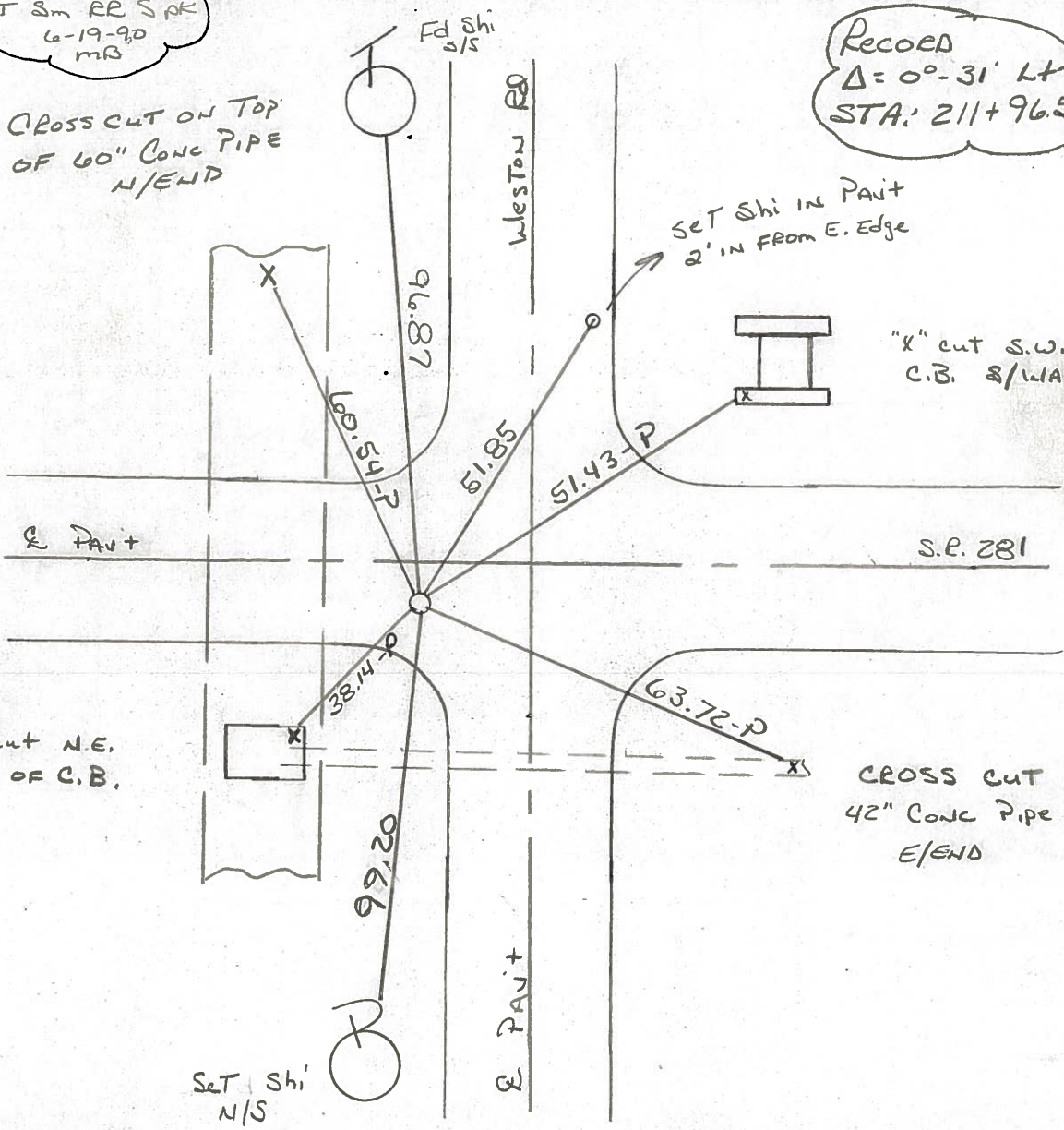
Set Shi IN PAV't
2' IN FROM E. Edge

"X" cut S.W. Cor
C.B. S/WALL

"X" Cut N.E.
Cor. of C.B.

CROSS CUT ON
42" CONC PIPE
E/END

Set Shi
N/S



Q.D.O.T. DISTRICT 2 SURVEY OFFICE

Sht. ___ of ___

County Wood S.R. 281

Date 5-20-81

Township MILTON

Weather clear

Section 23

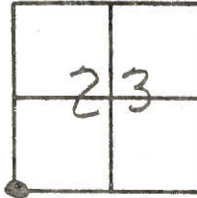
Temp. 65°

T4N, R9E

Personnel S. Hoffman

C. Loehrke

L. Householder



7-27-82
+75°
SWN



#10

"+" TOP of
PIPE @ N. END.

STA. 211 + 96.5

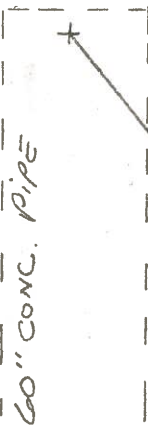
$\Delta = 0^\circ - 31'$ LT.

Fd. BOAT SPK. @ SURFACE

SLM 213 + 31

4.5' sof & Pav + 281

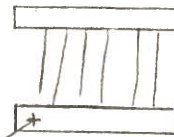
0.3' w of & Pav + WESTON Rd.



60" CONC. PIPE

SHINER
S/S

60.81-
53.1-
96.82-D



"+" S.W. COR
C.B. STRUCTURE

50.65 T.HUB
51.38-P
42

SCT P.K/WASHER

8-12-82
SWN

± 281

"+" N.E. COR
C.B. TOP



38.15-P

63.72
63.68-P

"+" TOP of 42" CONC. PIPE
@ E. END

Notch cut
1' up stop sign post
45.88'

WESTON ROAD

98.27-D

SHINER
N/S

OD.O.T. DISTRICT 2 SURVEY OFFICE

Sht. ___ of ___

OK-7-27-82-75°-S.W.H.

County WOOD S.R. 281

Date 5-20-81

Township MILTON

Weather clear

Section 23

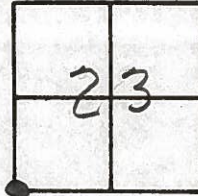
Temp. 65°

T4N, R9E

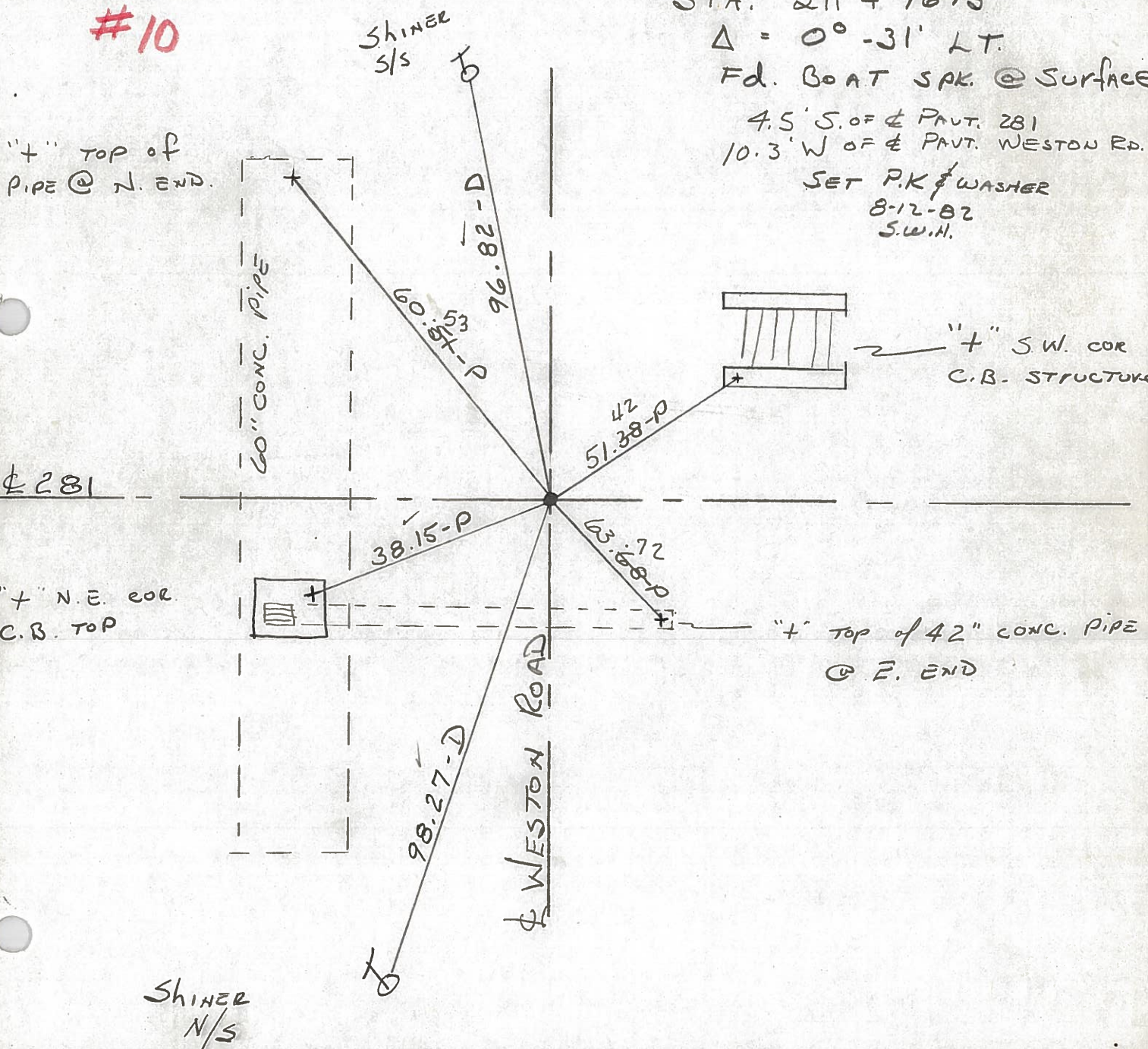
Personnel S. Hoffman

C. Lochrke

J. Householder



#10



STA. $211 + 96.5$
 $\Delta = 0^\circ - 31' LT.$
 Fd. BOAT SPK. @ SURFACE
 4.5' S. OF ϕ PAVT. 281
 10.3' W OF ϕ PAVT. WESTON RD.
 SET P.K. & WASHER
 8-12-82
 S.W.H.

"+" TOP OF PIPE @ N. END.

60" CONC. PIPE

ϕ 281

"+" N.E. COR. C.B. TOP

"+" S.W. COR. C.B. STRUCTURE

"+" TOP OF 42" CONC. PIPE @ E. END

WESTON ROAD

SHINER N/S

PERSONNEL TITLE PERSONNEL TITLE
 CK. BY _____ COUNTY WOOD DATE OK-11-18-70
SILVESTER _____ S. R. #281 WEATHER _____
BURNSIDE _____ SEC. 23 TEMP. _____
SMITH _____

DESCRIPTION CONTROL TIES JOB NO. _____
 LEFT CENTER LINE RIGHT

<p>STA. 238+39.4 S. 1/4 Post SEC. 23 MILTON TWP. $\Delta = 1^{\circ} 14' RT.$ 13' S. OF N. EDGE PAVE. SET BOAT SPIKE #153</p>		<p>#11</p>							<p>SHINER P. POLE N. 30.40 SHINER T. POLE S. 29.29 FACE IRON SIGN POST S.W. 37.79</p>
<p>STA. 211+96.5 S.W. COR. SEC. 23 MILTON TWP. T-4N R-9-E $\Delta = 0^{\circ} 31' LT.$ SET BOAT SPIKE (WESTON ROAD) #152</p>		<p>#10</p>							<p>"X"-E. END 42' PIPE S.E. 63.6 "X"-N. END 60' PIPE N.W. 60.5 "X"-N.E. COR. C.B. TOP S.W. 38.1 "WESTON ROAD" SIGN Post S.E. 38.9</p>

PERSONNEL	TITLE	PERSONNEL	TITLE	COUNTY	DATE	WEATHER
				Wood	12-4-57	
				#281	6-27-58	
					7-24-59	
					Sworden 3-22-60	
					Silvester 2-28-64	

DESCRIPTION	LEFT	CENTER LINE	RIGHT	JOB NO.
Sta. 198+62.6 S.E. 1/8 post sec. 22 Milton Twp. No Angle P.I. 1959 Dug & Fd. Stone #151-A		(Fd P.K.)	Set conc. Post N.N.E. Shiner in cor. post N. Shiner in P.P. N.W. Set conc. Post S.E.	26.6 26.1 63.41 47.3
Sta. 211+96.5 S.W. cor. sec. 23 Milton Twp. Set P.P. S.P.K. Weston Ed. $\Delta = 0^\circ - 31' Lt.$			N. To Tacked Hub S. To Shiner S.E. "X" cut in East end 42" Pipe (Plumbed) N.W. "X" cut in N. end 60" Pipe (Plumbed) S.W. "X" cut in N.E. Cor. C.B. Top (Plumbed)	300' 300' 63.6 60.5 38.15
Sta. 238+39.4 S. 1/4 post sec. 23 Milton Twp. (Fd 1/2" Iron Rod) P.I. $\Delta = 1^\circ - 14' Rt.$ 13' S. of N. edge of pav't.		(Fd. P.K.)	Shiner in P.P. N. Shiner in T.P. S. Face iron sign post S.S.W.	30. 29.29' 45.
<p>Note: For S.E. cor. sec. 23 Milton twp. see point #75 S.H. 899, sec. A.</p>				