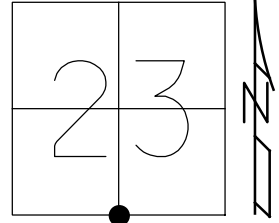


O.D.O.T. DISTRICT 2 SURVEY OFFICE (USE ONLY)

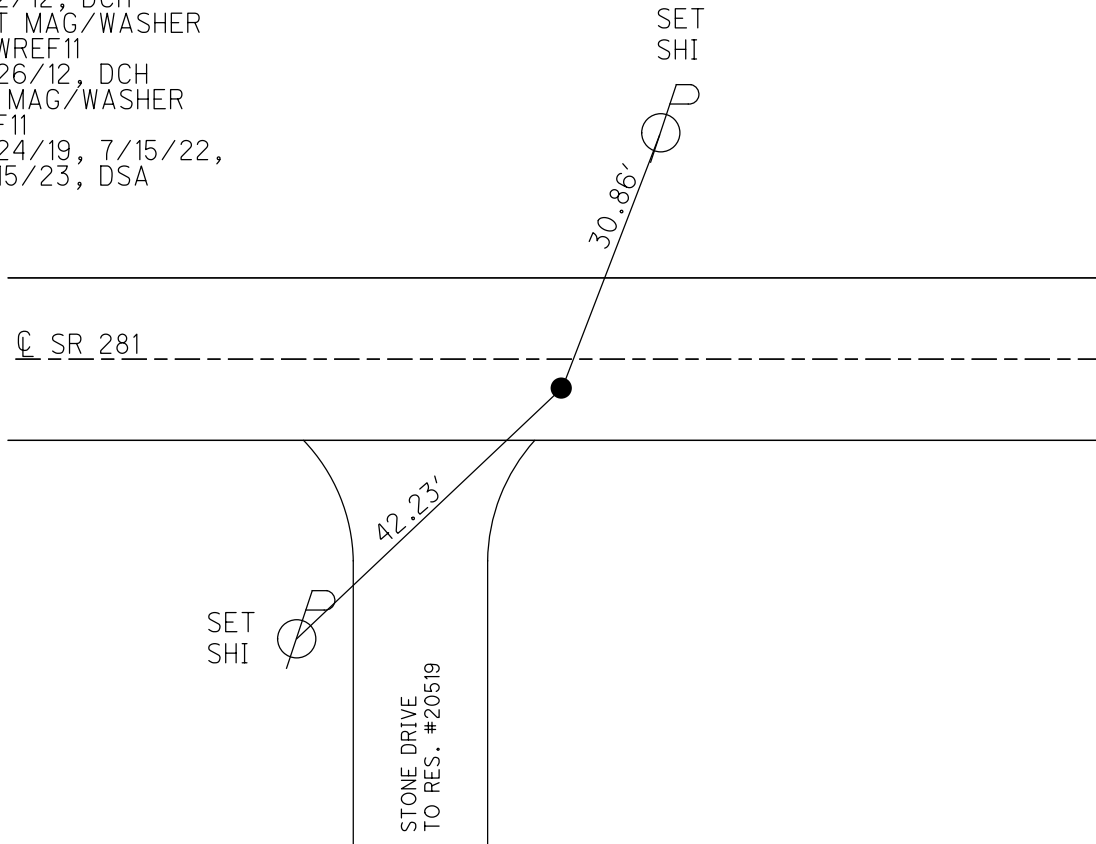
PERSONNEL \_\_\_\_\_ REFERENCE NO. 11 SHEET 15 OF 15  
 NOTES NIESE DATE 2/15/23 ROUTE SR 281  
 H.C. AUBLE WEATHER WINDY COUNTY WOOD  
 R.C. MILLER TEMP. 61° TOWNSHIP MILTON  
 DWG BY RHOADES PID CHIP SEAL SECTION 23  
 T 4 N R 9 E

TYPE MONUMENT MAG/WASHER  
 ON SURFACE - ~~BELOW~~ ON \_\_\_\_\_  
 OFFSET  $\odot$  PAVEMENT 3.5' ~~LF~~ : RT  
6.4' TO RT EDGE PAVEMENT  
 STATION: 239+17.60



HORZ. DATUM: NAD83 2011 GEOID: NAVD88 2018  
 GRID: NORTHING: 592123.200 EASTING: 1612440.713

RECORD:  
 $\Delta = 10^\circ 14' RT$   
 STA. 238+39.4  
 FD P.K./WASHER  
 5/23/90, MB  
 SET SM.R.R.SPIKE  
 6/19/90, MB  
 FD SM.R.R.SPIKE  
 7/2/12, DCH  
 SET MAG/WASHER  
 NEWREF11  
 9/26/12, DCH  
 FD MAG/WASHER  
 REF11  
 6/24/19, 7/15/22,  
 2/15/23, DSA



O.D.O.T. DISTRICT 2 SURVEY OFFICE (USE ONLY)

PERSONNEL

REFERENCE NO. 11

SHEET 15 OF 15

NOTES HOMAN

DATE 7/3/12

ROUTE SR 281

H.C. ROUSOS

WEATHER CLOUDY

COUNTY WOOD

R.C. COUTCHER  
HARBAUGH

TEMP. 75°

TOWNSHIP MILTON

DWG BY RHOADES PID 94340

SECTION 23

T 4 N R 9 E

TYPE MONUMENT SM.R.R.SPIKE

ON SURFACE - ~~BELOW~~ ON

OFFSET  $\odot$  PAVEMENT 3.5' ~~LT~~ : RT

6.4' TO RT EDGE PAVEMENT

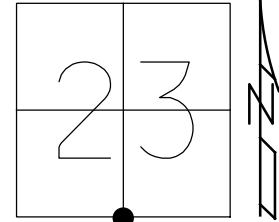
STATION: 239+17.60

HORZ.DATUM: NAD83 2011

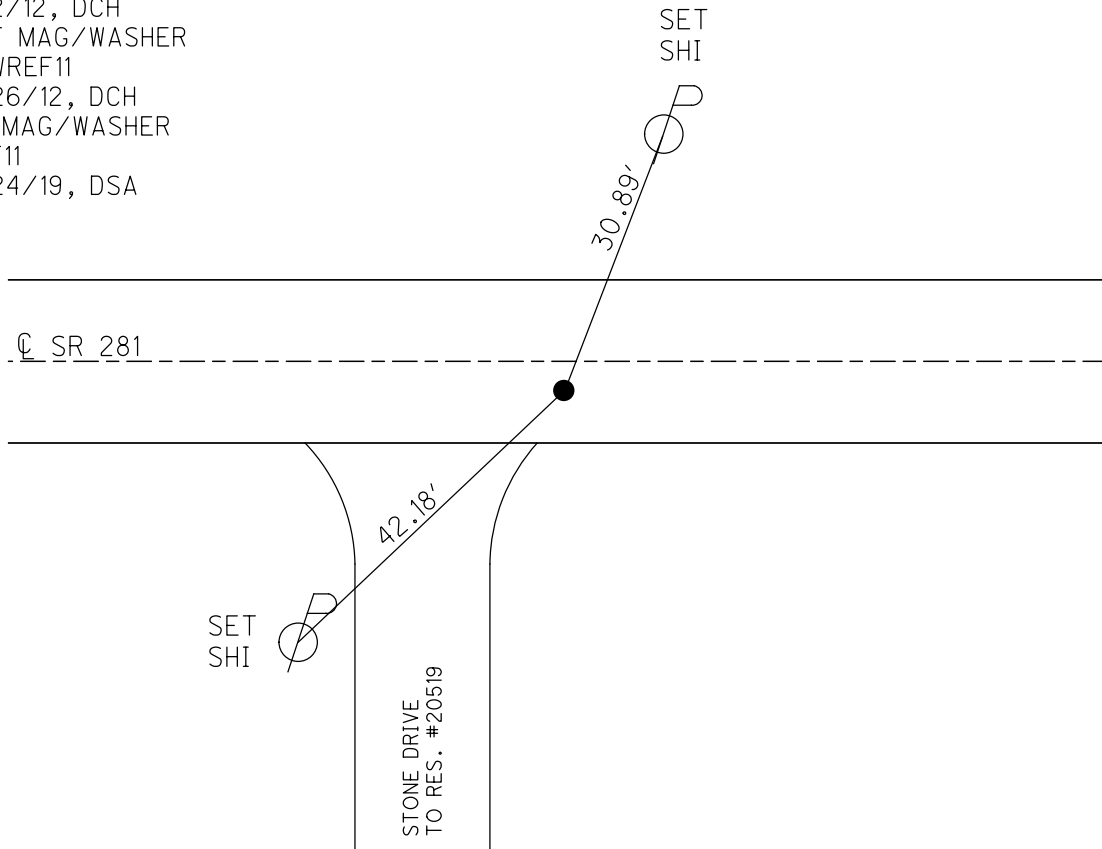
GEOID: NAVD88 2018

GRID: NORTHING: 592123.215

EASTING: 1612440.697



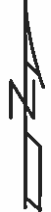
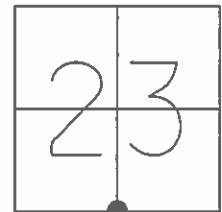
RECORD:  
 $\Delta = 10^\circ 14' RT$   
 STA. 238+39.4  
 FD P.K./WASHER  
 5/23/90, MB  
 SET SM.R.R.SPIKE  
 6/19/90, MB  
 FD SM.R.R.SPIKE  
 7/2/12, DCH  
 SET MAG/WASHER  
 NEWREF11  
 9/26/12, DCH  
 FD MAG/WASHER  
 REF11  
 6/24/19, DSA



O.D.O.T. DISTRICT 2 SURVEY OFFICE (USE ONLY)

PERSONNEL \_\_\_\_\_ REFERENCE NO. 11 SHEET 15 OF 15  
 NOTES HOMAN DATE 7/3/12 ROUTE SR 281  
 H.C. ROUSOS WEATHER CLOUDY COUNTY WOOD  
 R.C. COUTCHER TEMP. 75° TOWNSHIP MILTON  
HARBAUGH SECTION 23  
T 4 N R 9 E

TYPE MONUMENT SM.R.R.SPIKE  
 ON SURFACE - ~~BELOW~~ ON  
~~LEFT~~ - ☉ PAV'T - RIGHT 3.5'  
6.4' TO RT EDGE PAVEMENT  
 S.L.M. 239+44



GRID: NORTHING: 592123.172 EASTING: 1612440.623

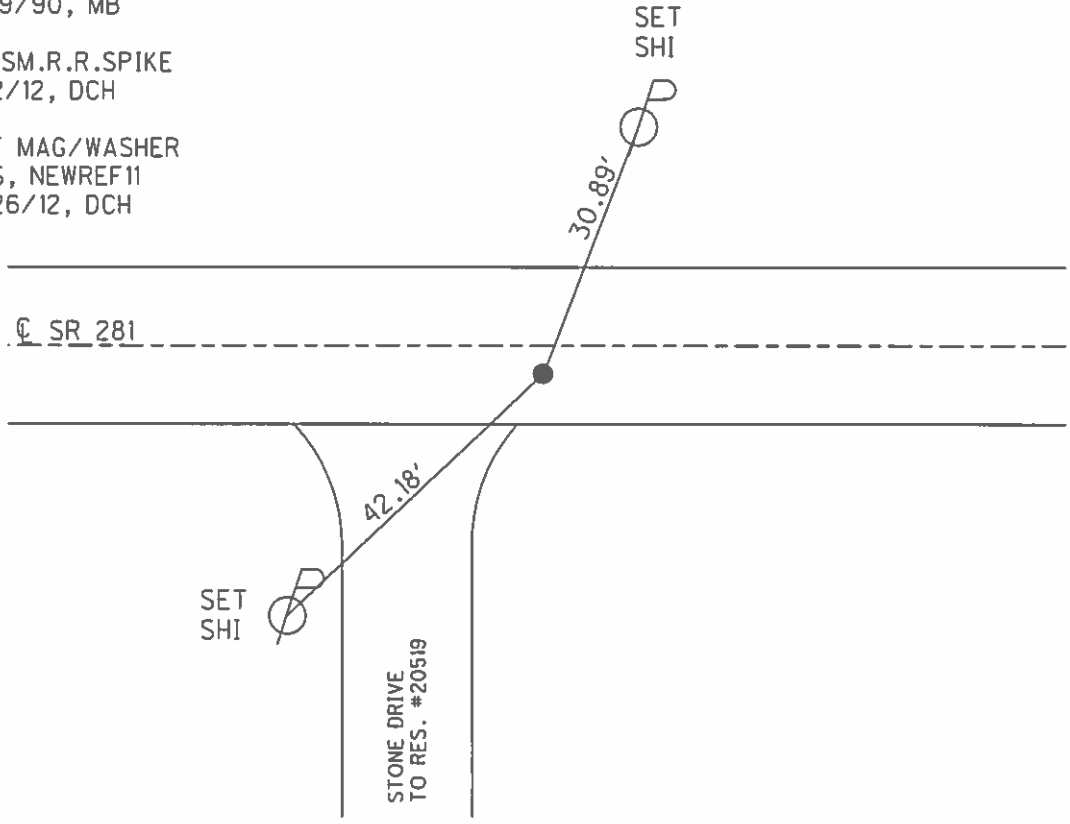
RECORD:  
 $\Delta = 10^\circ 14' RT$   
 STA. 238+39.4

FD P.K./WASHER  
 5/23/90, MB

SET SM.R.R.SPIKE  
 6/19/90, MB

FD SM.R.R.SPIKE  
 7/2/12, DCH

SET MAG/WASHER  
 GPS, NEWREF11  
 9/26/12, DCH



O.D.O.T. DISTRICT 2 SURVEY OFFICE

PERSONNEL \_\_\_\_\_

REFERENCE NO. 11

SHEET \_\_\_\_\_ OF \_\_\_\_\_

NOTES BARNHISEL

H.C. \_\_\_\_\_

DATE 5-23-90

ROUTE 281

R.C. HOFFMAN

WEATHER SUNNY

COUNTY Wood

TEMP. +65°

TOWNSHIP Milton

SECTION 23

T 4 R 9 E

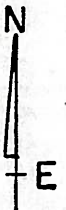
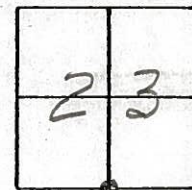
TYPE MONUMENT P.K. Washer

ON SURFACE - ~~BELOW~~ yes

~~LEFT - & PAV'T.~~ - RIGHT 35

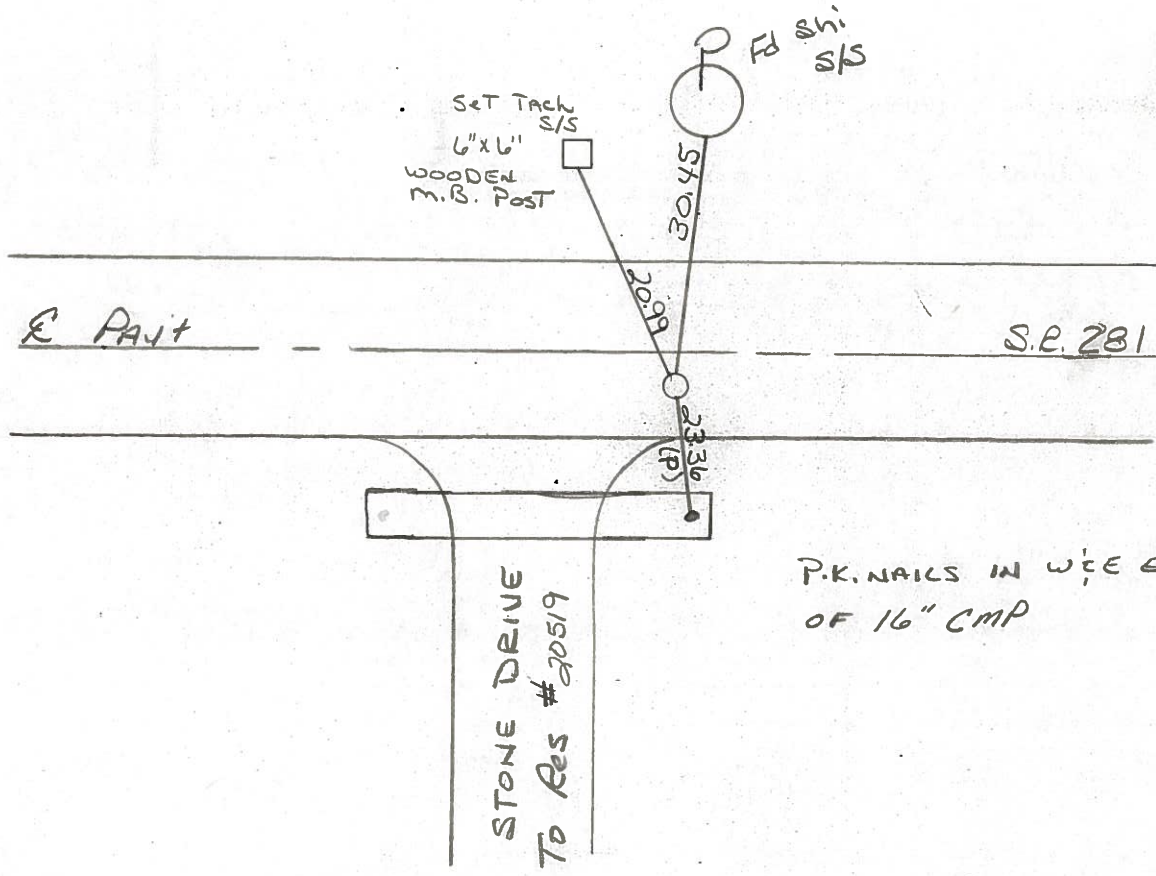
6.4 TO RT EDGE PAVEMENT

S.L.M. 239+44



RECORD  
 $\Delta = 10^{\circ} - 14' R +$   
 STA: 238+39.4

Set Sm RR Spk  
 6-19-90  
 MB



P.K. NAILS IN W & E ENDS  
 OF 16" CMP

ODOT DISTRICT 2 SURVEY OFFICE

SHEET

OF

County Wood S.R. 281

Township Milton

Section 23

T4N, R9E

Personnel S. Hoffmann

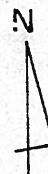
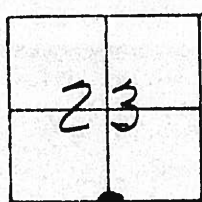
C. Loehrke

J. Householder

Date OK-7-27-82 - 750-S.W.H.  
5-20-81

Weather Clear

Temp. 65°



STA. 238+39.4

$\Delta = 10-14'$  RT.

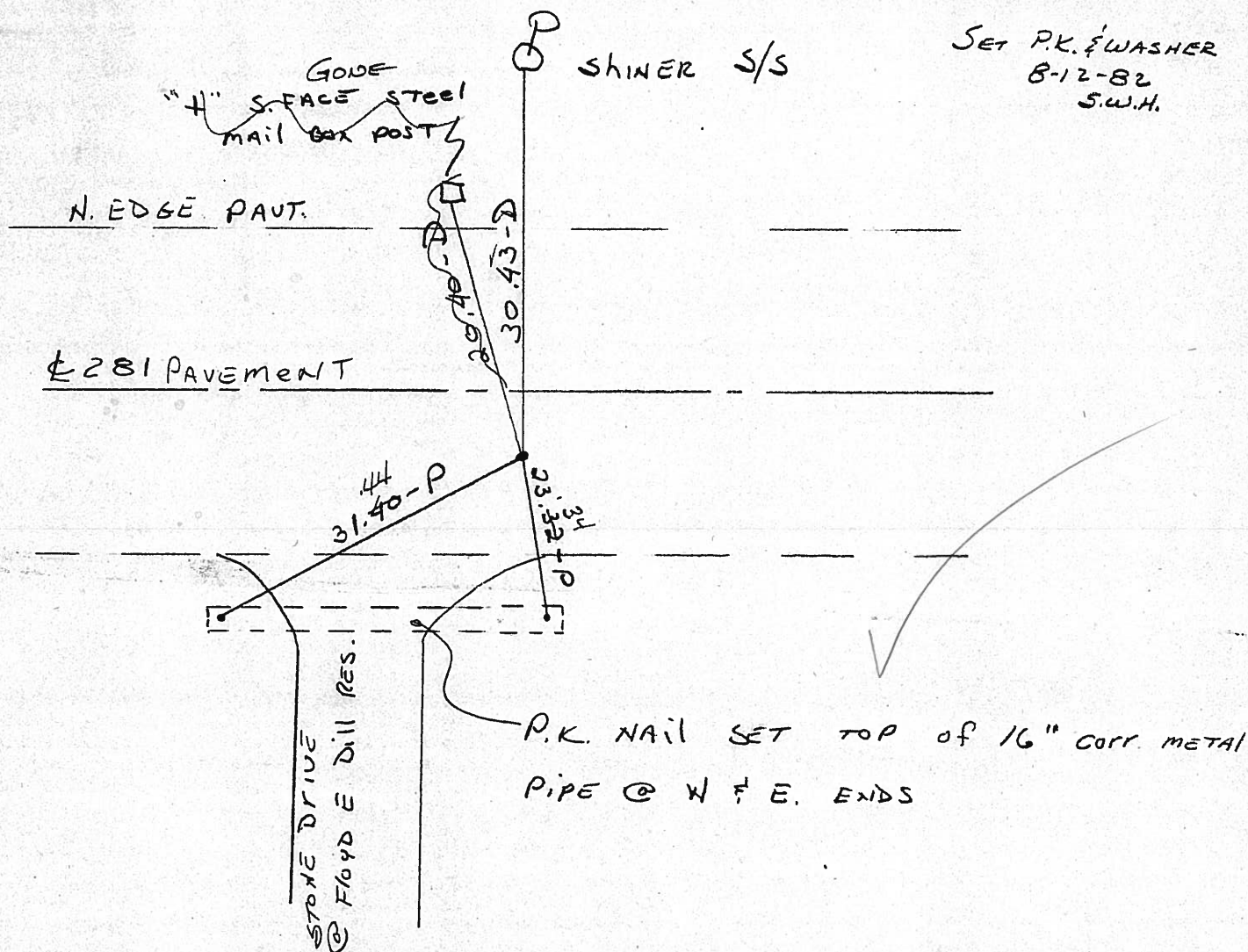
13' S. of N. EDGE PAVE.

Fd. R.R. SPK  $1\frac{1}{2}$ " Below Surface

3.2' S. OF  $\Phi$  PAVT 281

#11

SET P.K. & WASHER  
8-12-82  
S.W.H.





O.D.O.T. DISTRICT 2 SURVEY OFFICE

SHEET OF

County Wood S.R. 281

Township Milton

Section 23

T4N, R9E

Personnel S. Hoffman

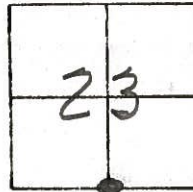
C. Loehrke

J. Householder

OK-7-27-82-750-S.W.M.  
Date 5-20-81

Weather clear

Temp. 65°



#11

STA. 238+39.4

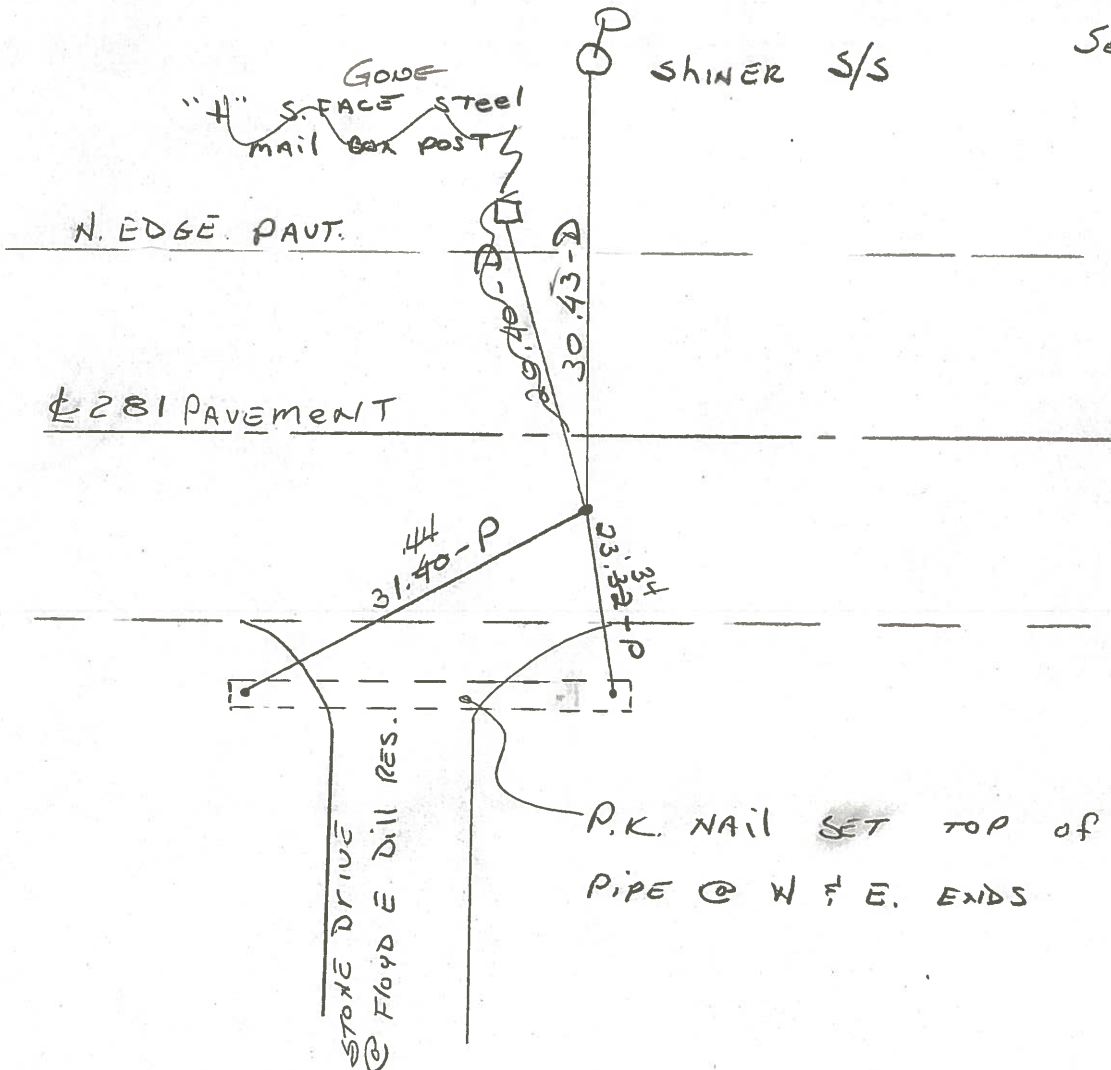
$\Delta = 10-14'$  RT.

13' S. of N. EDGE PAVE.

Fd. R.R. SPK  $1\frac{1}{2}$ " Below Surface

3.2' S. OF  $\phi$  PAVT. 281

SET P.K. & WASHER  
8-12-82  
S.W.M.



P.K. NAIL SET TOP of 16" CORR. METAL  
PIPE @ W & E. ENDS

PERSONNEL TITLE PERSONNEL TITLE

CK. BY

COUNTY WOOD

DATE OK-11-18-70

SILVESTER

S. R. 281

WEATHER

BURNSIDE

SEC. 23

TEMP.

SMITH

DESCRIPTION

CONTROL TIES

JOB NO.

LEFT

CENTER LINE

RIGHT

STA. 238+39.4  
 S. 1/4 Post SEC. 23  
 MILTON TWP.  
 $\Delta = 1^{\circ} 14' RT.$   
 13' S. OF N. EDGE PAVE.  
 SET BOAT SPIKE  
 #153

#11

SHINER P. POLE N. 30.40  
 SHINER T. POLE S. 29.29  
 FACE IRON SIGN Post S.S.W. 37.79

STA. 211+96.5  
 S.W. COR. SEC. 23  
 MILTON TWP.  
 T-4N R-9-E  
 $\Delta = 0^{\circ} 31' LT.$   
 SET BOAT SPIKE  
 (WESTON ROAD)  
 #152

#10

"X"-E. END 42" PIPE S.E. 63.6 (P)  
 "X"-N. END 60" PIPE N.W. 60.5 (P)  
 "X"-N.E. COR. C.B. TOP S.W. 38.1 (P)  
 "WESTON ROAD" SIGN Post S.E. 38.9



PERSONNEL	TITLE	PERSONNEL	TITLE

COUNTY Wood  
 DATE 12-4-57  
 S. R. #281  
 WEATHER 6-27-58  
7-24-59  
Sworden 3-22-60  
 SEC. Sylvester 2-28-64  
 TEMP

DESCRIPTION LEFT CENTER LINE RIGHT JOB NO.

Sta. 198+62.6			Set conc. Post N.N.E.	26.6
S.E. 1/4 post sec. 22	1966		Shiner in cor. post N.	26.1
Milton Twp.	(Fd P.K.)		Shiner in P.P. N.W.	63.41 63.1
No Angle Pl.			Set conc. Post S.E.	47.3
1959 Dug & Fd. Stone	#151-A			
<b>9-A</b>				
Sta. 211+96.5			N. To Tacked Hub	300'
S.W. cor. sec. 23 Milton			S. To Shiner	300'
Twp. Set R.R. Spk.			S.E. "X" cut in East end 42" Pipe	
Weston Rd.			(Plumbed) 63.6	
$\Delta = 0^\circ - 31' Lt.$			N.W. "X" cut in N. end 60" Pipe	
<b>10</b>	#152		(Plumbed) 60.5	
			S.W. "X" cut in N.E. Cor. C.B. Top	
			(Plumbed) 38.15	
Sta. 238+39.4			Shiner in P.P. N.	30.1
S. 1/4 post sec. 23 Milton			Shiner in T.P. S.	29.29' 29.1
Twp. (Fd 1/2" Iron Rod)	(Fd. P.K.)		Face iron sign post S.S.W.	45.1
P.L. $\Delta = 1^\circ - 14' Rt.$				
13' S. of N. edge of pav't.				
<b>11</b>	#153			

Note: For S.E. cor. sec. 23  
 Milton twp. see point  
 #75 S.H. 899, sec. A.