

O.D.O.T. DISTRICT 2 SURVEY OFFICE (USE ONLY)

PERSONNEL \_\_\_\_\_

REFERENCE NO. 12

SHEET 1 OF 36

NOTES NIESE

DATE 10/4/21

ROUTE SR 281

H.C. AUBLE

WEATHER OVERCAST

COUNTY WOOD

R.C. NIESE

TEMP. 63°

TOWNSHIP MILTON

SECTION 23

DWG BY RHOADES PID 94340

T 4 N R 9 E

TYPE MONUMENT MAG/WASHER

ON SURFACE - ~~BELOW~~ ON

OFFSET  $\odot$  PAVEMENT 8' ~~LT~~ : RT

2.2' TO RT EDGE PAVEMENT

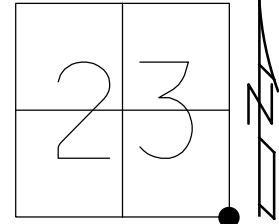
STATION: 265+58.40

HORZ. DATUM: NAD83 2011

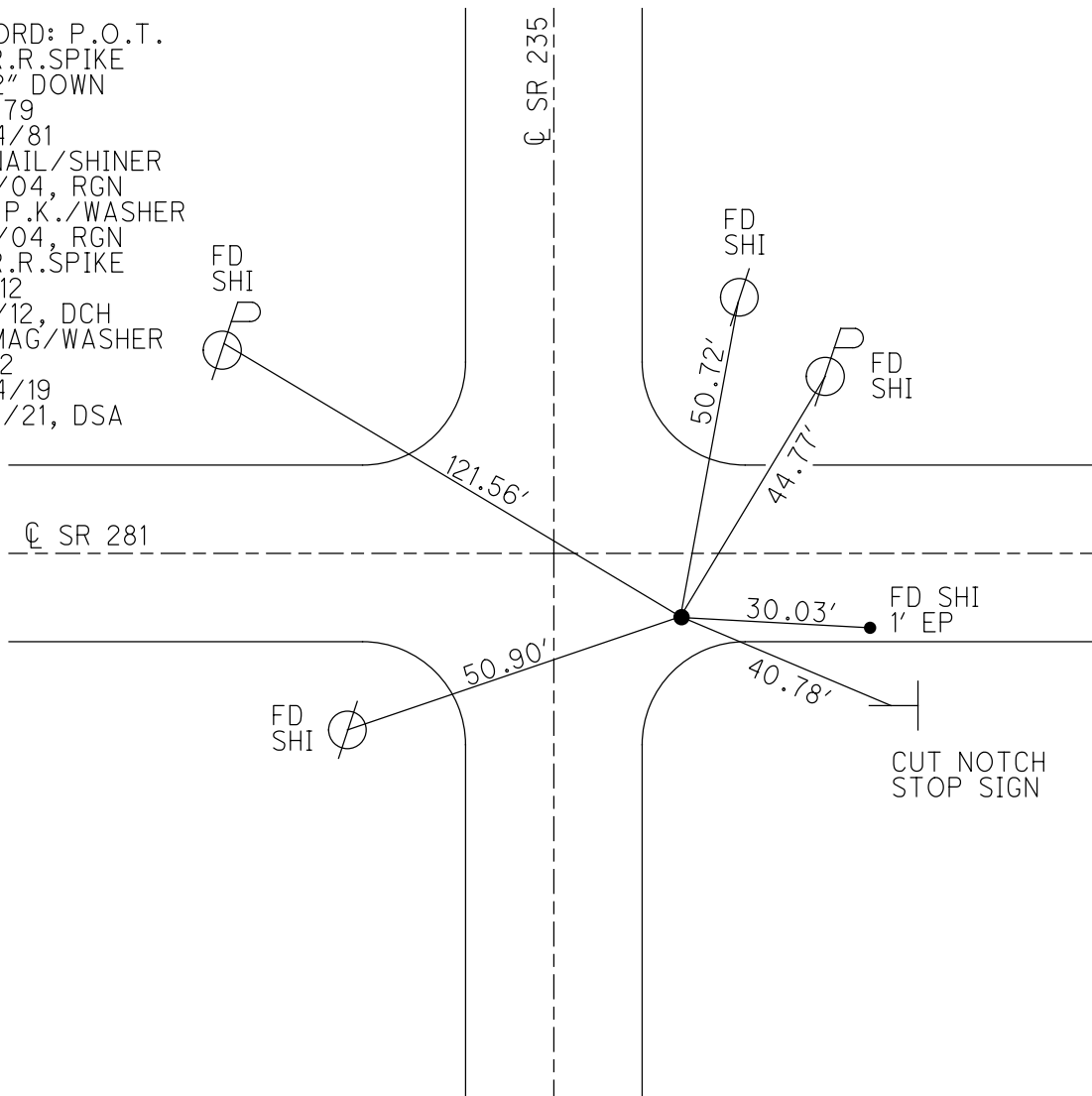
GEOID: NAVD88 2018

GRID: NORTHING: 592070.931

EASTING: 1615080.977



RECORD: P.O.T.  
 FD R.R.SPIKE  
 1 1/2" DOWN  
 5/1/79  
 8/24/81  
 FD NAIL/SHINER  
 5/6/04, RGN  
 SET P.K./WASHER  
 5/6/04, RGN  
 FD R.R.SPIKE  
 REF112  
 7/2/12, DCH  
 FD MAG/WASHER  
 REF12  
 6/24/19  
 10/4/21, DSA



O.D.O.T. DISTRICT 2 SURVEY OFFICE (USE ONLY)

PERSONNEL

REFERENCE NO. 12

SHEET 1 OF 28

NOTES NUHFER

DATE 5/6/04

ROUTE SR 281

H.C. CANTERBURY

WEATHER SUNNY

COUNTY WOOD

R.C. ARMS

TEMP. 78°

TOWNSHIP MILTON

SECTION 23

DWG BY RHOADES PID \_\_\_\_\_

T 4 N R 9 E

TYPE MONUMENT NAIL/SHINER

ON SURFACE - ~~BELOW~~ ON \_\_\_\_\_

OFFSET  $\odot$  PAVEMENT 8' ~~±~~ : RT

2.2' TO RT EDGE PAVEMENT

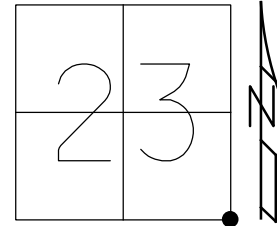
STATION: 265+78.09

HORZ. DATUM: \_\_\_\_\_

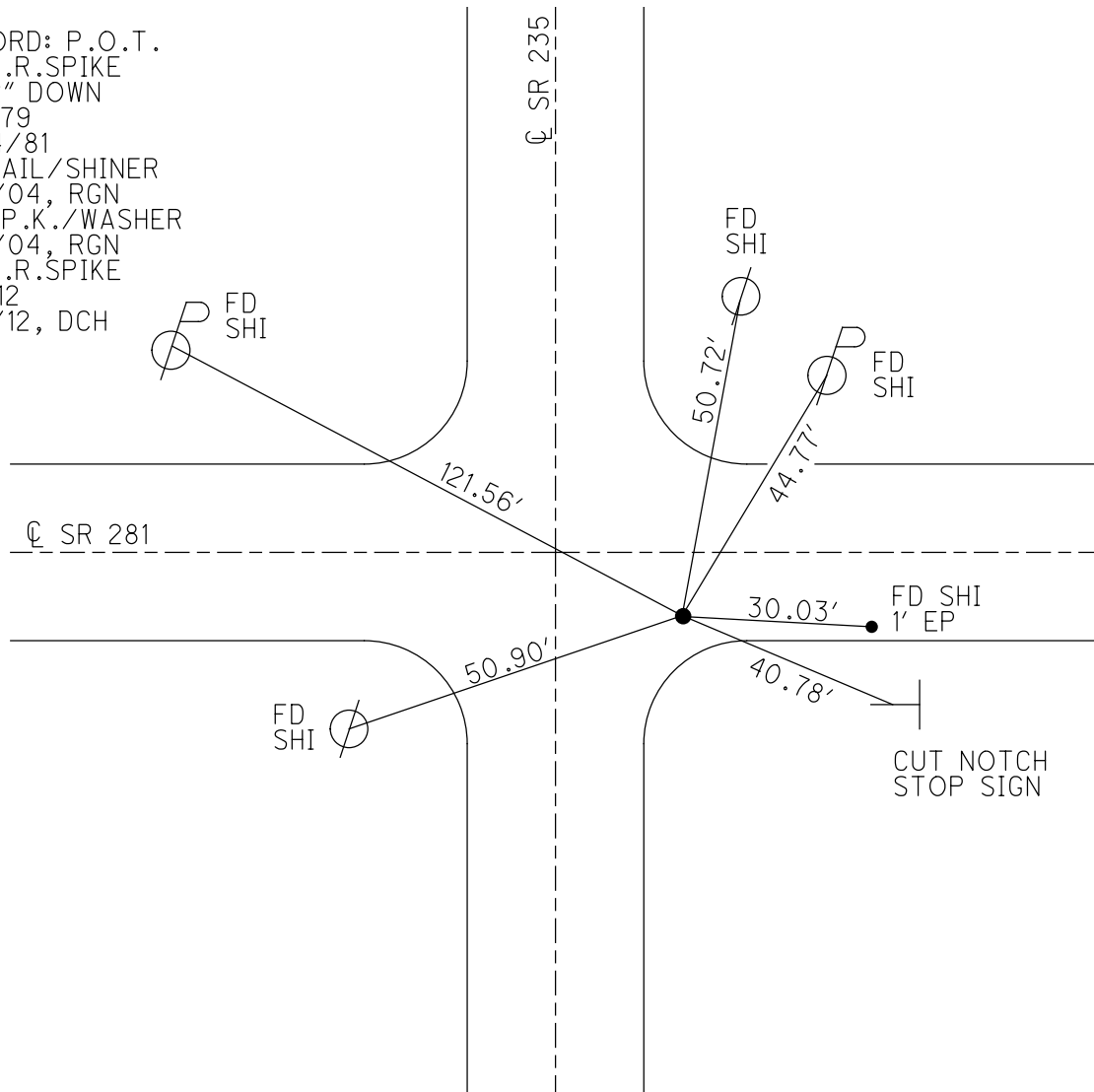
GEOID: \_\_\_\_\_

GRID: NORTHING: 592071.043

EASTING: 1615080.891



RECORD: P.O.T.  
 FD R.R.SPIKE  
 1 1/2" DOWN  
 5/1/79  
 8/24/81  
 FD NAIL/SHINER  
 5/6/04, RGN  
 SET P.K./WASHER  
 5/6/04, RGN  
 FD R.R.SPIKE  
 REF112  
 7/2/12, DCH



O.D.O.T. DISTRICT 2 SURVEY OFFICE

PERSONNEL

REFERENCE NO. 18

SHEET 1 OF 25

NOTES NUHFER

DATE 5-6-04

ROUTE S.R. 235

H.C. CANTERBURY

WEATHER SUNNY

COUNTY WOOD

R.C. ARMS

TEMP. +78°

TOWNSHIP MILTON

SECTION 26

T 4 N R 9 E

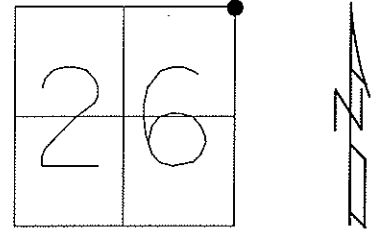
TYPE MONUMENT NAIL / SHI

ON SURFACE - BELOW YES

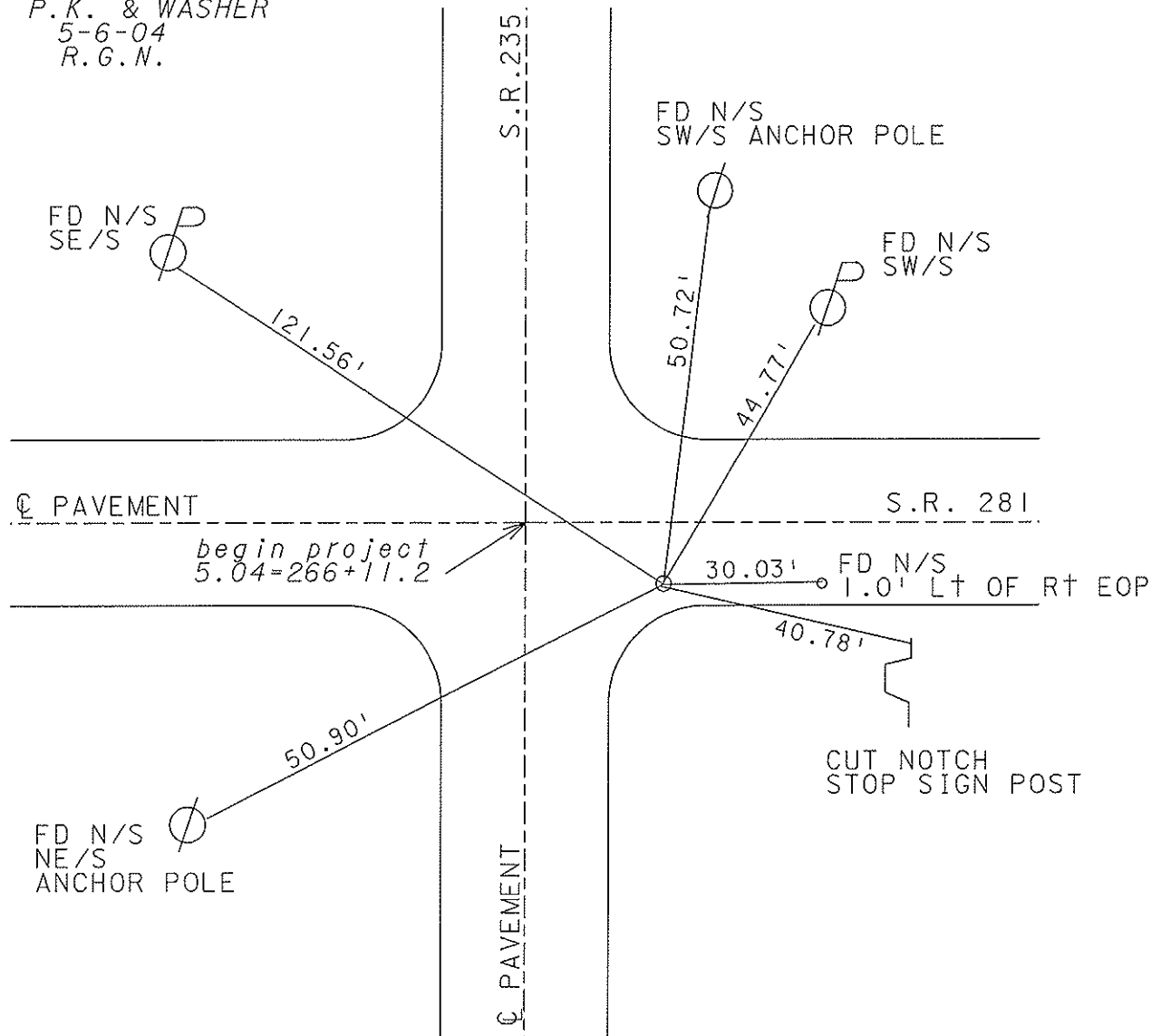
☉ PAV'T - RIGHT 11.4'

2.2 TO RT. EDGE PAVEMENT

S.L.M. S.R. 235 = 424+47 (8' RT OF SR 281 ☉)



FD. P.K. & WASHER  
5-6-04  
R.G.N.



OD.O.T. DISTRICT 2 SURVEY OFFICE

Sht. 1 of

County Wood S.R. 281

Date <sup>OK</sup> 5-1-79 8-24-81

Township MILTON

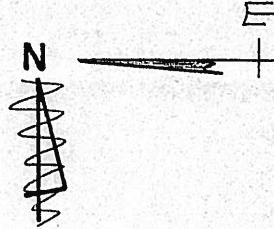
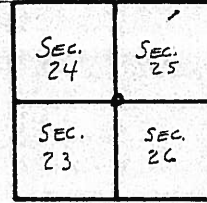
Weather CLEAR

Section 23, 24, 25, 26

Temp. + 45°

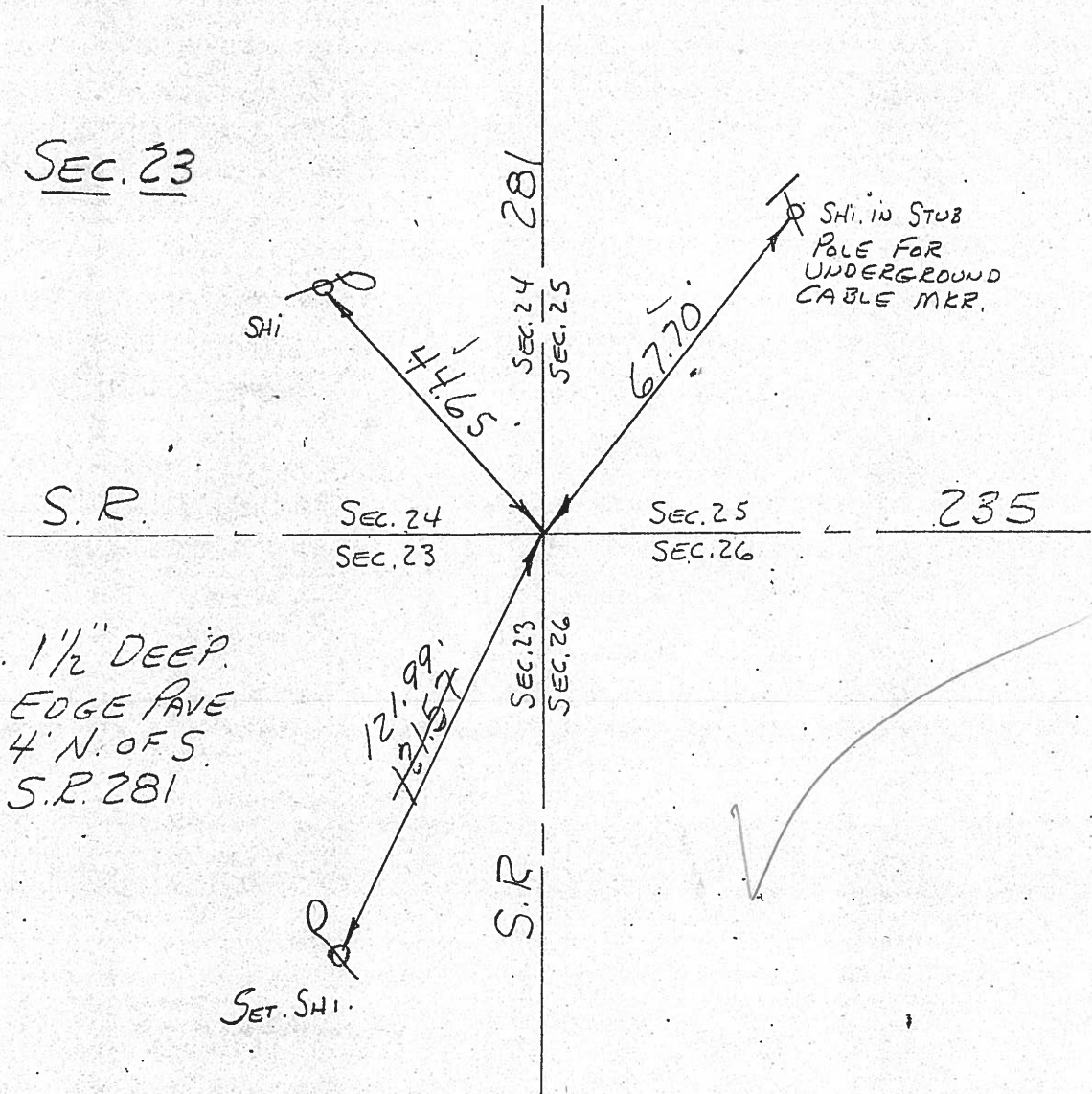
T4N, R9E

Personnel BURNSIDE  
SMITH  
BOWERS  
KNADE  
MEAD



Ref #12

S.E. COR SEC. 23



FD. R.R. SPK. 1 1/2" DEEP.  
2' E. OF E. EDGE PAVE  
S.R. 235 & 4' N. OF S.  
EDGE PAVE. S.R. 281

PERSONNEL TITLE PERSONNEL TITLE COUNTY WOOD DATE OK-11-18-70  
 CK. BY \_\_\_\_\_ S. R. #281 WEATHER \_\_\_\_\_  
SILVESTER \_\_\_\_\_ SEC. 23 & 24 TEMP. \_\_\_\_\_  
BURNSIDE \_\_\_\_\_  
SMITH \_\_\_\_\_

DESCRIPTION OR BOL. CONTROL TIES JOB NO. \_\_\_\_\_  
 LEFT CENTER LINE RIGHT

<p>STA. 291+45.5                  5/4 Post SEC. 24                  MILTON Twp.  <math>\Delta = 0^{\circ} - 03' \text{ LT.}</math>                  5' SOUTH OF SOUTH EDGE                  PAVEMENT                  IRON PIN OVER STONE</p> <p>#154</p>		<p>#13</p>							
<p>S.E. COR. SEC. 23                  MILTON Twp.                  T-4-N R-9-E                  (INTERSECTION S.R. #281 &amp;                  S.R. #235)</p> <p>#153-A or #75 ON SR 235</p>		<p>#12</p>							