

O.D.O.T. DISTRICT 2 SURVEY OFFICE (USE ONLY)

PERSONNEL

REFERENCE NO. 15

SHEET 4 OF 36

NOTES NUHFER

DATE 5/6/04

ROUTE SR 281

H.C. CANTERBURY

WEATHER SUNNY

COUNTY WOOD

R.C. ARMS

TEMP. 78°

TOWNSHIP LIBERTY

DWG BY RHOADES

PID 94340

SECTION 19

T 4 N R 10 E

TYPE MONUMENT 3/4" IPIN

ON SURFACE - ~~BELOW~~ 12"

OFFSET Q PAVEMENT 23.5' ~~LT~~ : RT

12.5' TO RT EDGE PAVEMENT

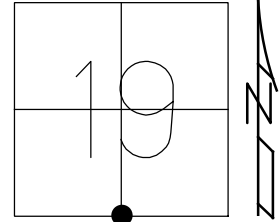
STATION: 346+16.97

HORZ. DATUM: NAD83 2011

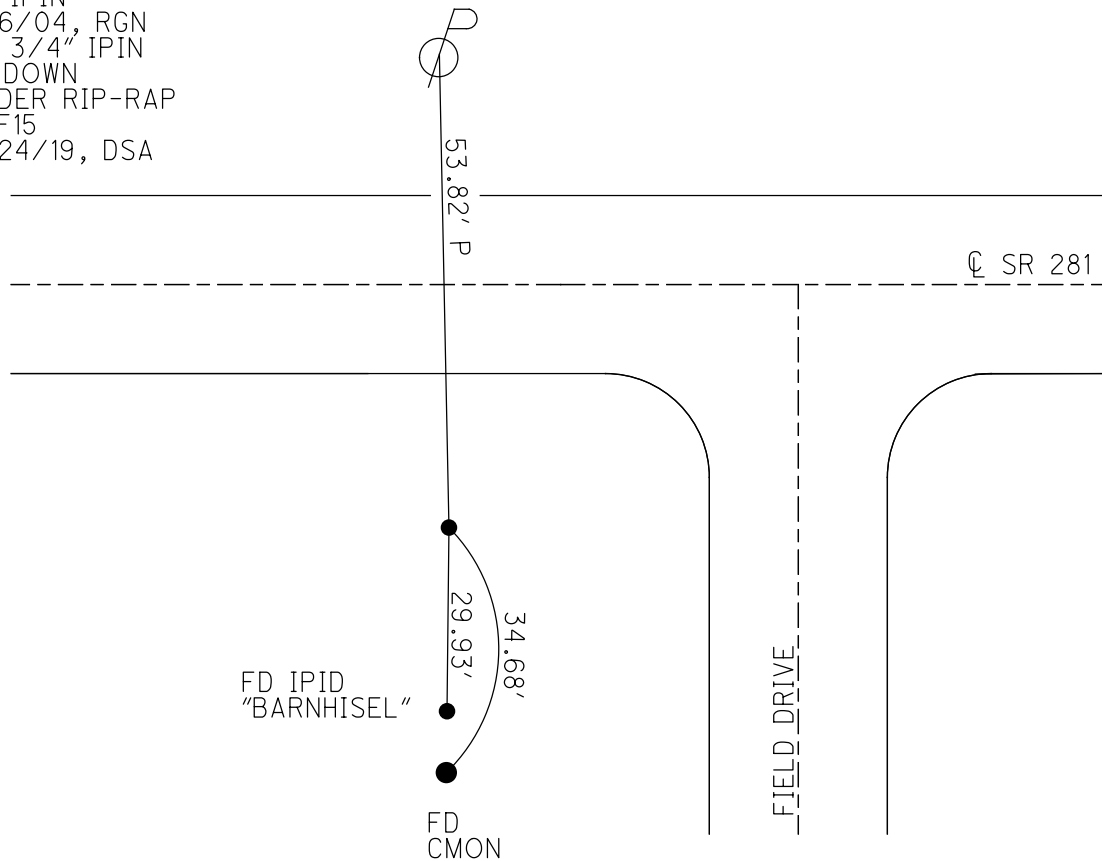
GEOID: NAVD88 2018

GRID: NORTHING: 591919.612

EASTING: 1623136.615



RECORD:
 FD 3/4" IPIN
 OVER STONE
 STONE IS 1 1/2
 DEEP ON N BANK
 OF DITCH
 5/1/79, BURNSIDE
 FD IPIN
 5/6/04, RGN
 FD 3/4" IPIN
 2" DOWN
 UNDER RIP-RAP
 REF15
 6/24/19, DSA



O.D.O.T. DISTRICT 2 SURVEY OFFICE (USE ONLY)

PERSONNEL

REFERENCE NO. 15

SHEET 4 OF 25

NOTES NUHFER

DATE 5-6-04

ROUTE S.R. 281

H.C. CANTERBURY

WEATHER SUNNY

COUNTY WOOD

R.C. ARMS

TEMP. +78°

TOWNSHIP LIBERTY

SECTION 19

T 4 N R 10 E

TYPE MONUMENT 3/4" IRON ROD

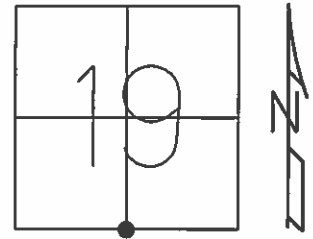
~~ON SURFACE~~ - BELOW 12"

~~|||||~~ - \odot PAV'T - RIGHT 23.5'

12.5' TO RT. EDGE PAVEMENT

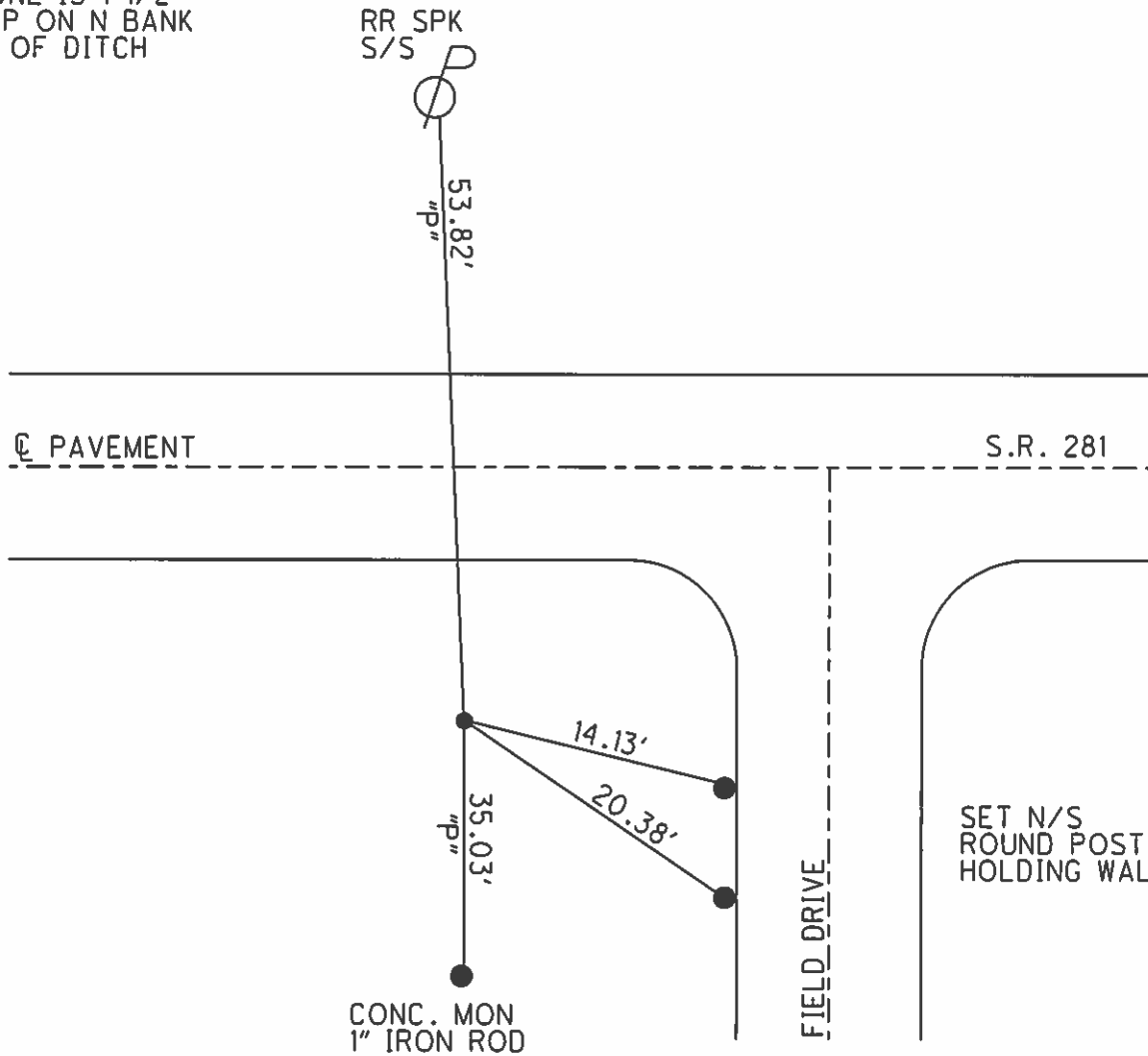
S.L.M. 346+75

Grid: Northing: _____ Easting: _____



RECORD
 $\frac{3}{4}$ " IRON ROD
 AT SURFACE SET
 OVER STONE
 STONE IS 1 1/2
 DEEP ON N BANK
 OF DITCH

FD. IRON ROD
 5-6-04
 R.G.N.



O.D.O.T. DISTRICT 2 SURVEY OFFICE

PERSONNEL

REFERENCE NO. 15

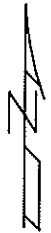
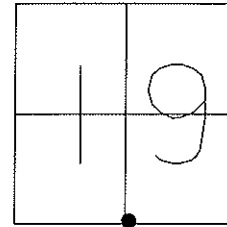
SHEET 4 OF 25

NOTES NUHFER
 H.C. CANTERBURY
 R.C. ARMS

DATE 5-6-04
 WEATHER SUNNY
 TEMP. +78°

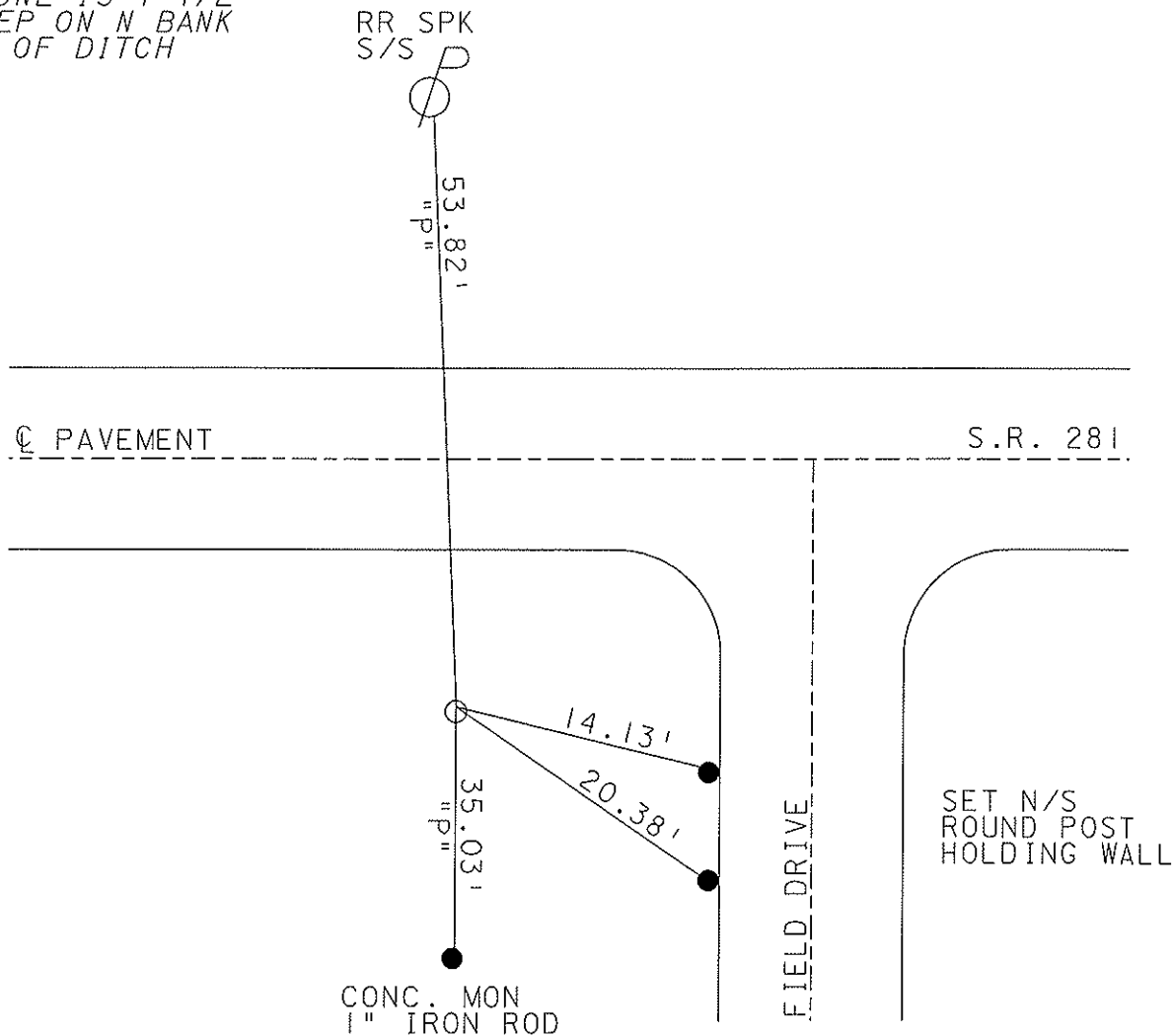
ROUTE S.R. 281
 COUNTY WOOD
 TOWNSHIP LIBERTY
 SECTION 19
T 4 N R 10 E

TYPE MONUMENT 3/4" IRON ROD
 ON SURFACE-BELOW 12" DOWN
 @ PAV'T - RIGHT 23.5'
12.5' RT OF EDGE PAVEMENT
 S.L.M. 346+75



RECORD
 3/4" IRON ROD
 AT SURFACE SET
 OVER STONE
 STONE IS 1 1/2
 DEEP ON N BANK
 OF DITCH

FD. IRON ROD
 5-6-04
 R.G.N.



O.D.O.T. DISTRICT 2 SURVEY OFFICE

PERSONNEL _____

REFERENCE NO. 15

SHEET _____ OF _____

NOTES BAENHISEL

H.C. Coehrke

R.C. Reed

Hoffman

DATE 8-24-88

WEATHER Sunny

TEMP. +72°

ROUTE S.E. 281

COUNTY Wood

TOWNSHIP Liberty

SECTION 19

T 4 N R 10 E

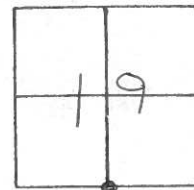
TYPE MONUMENT 3/4" Iron Rod

ON SURFACE - ~~BELOW~~ yes

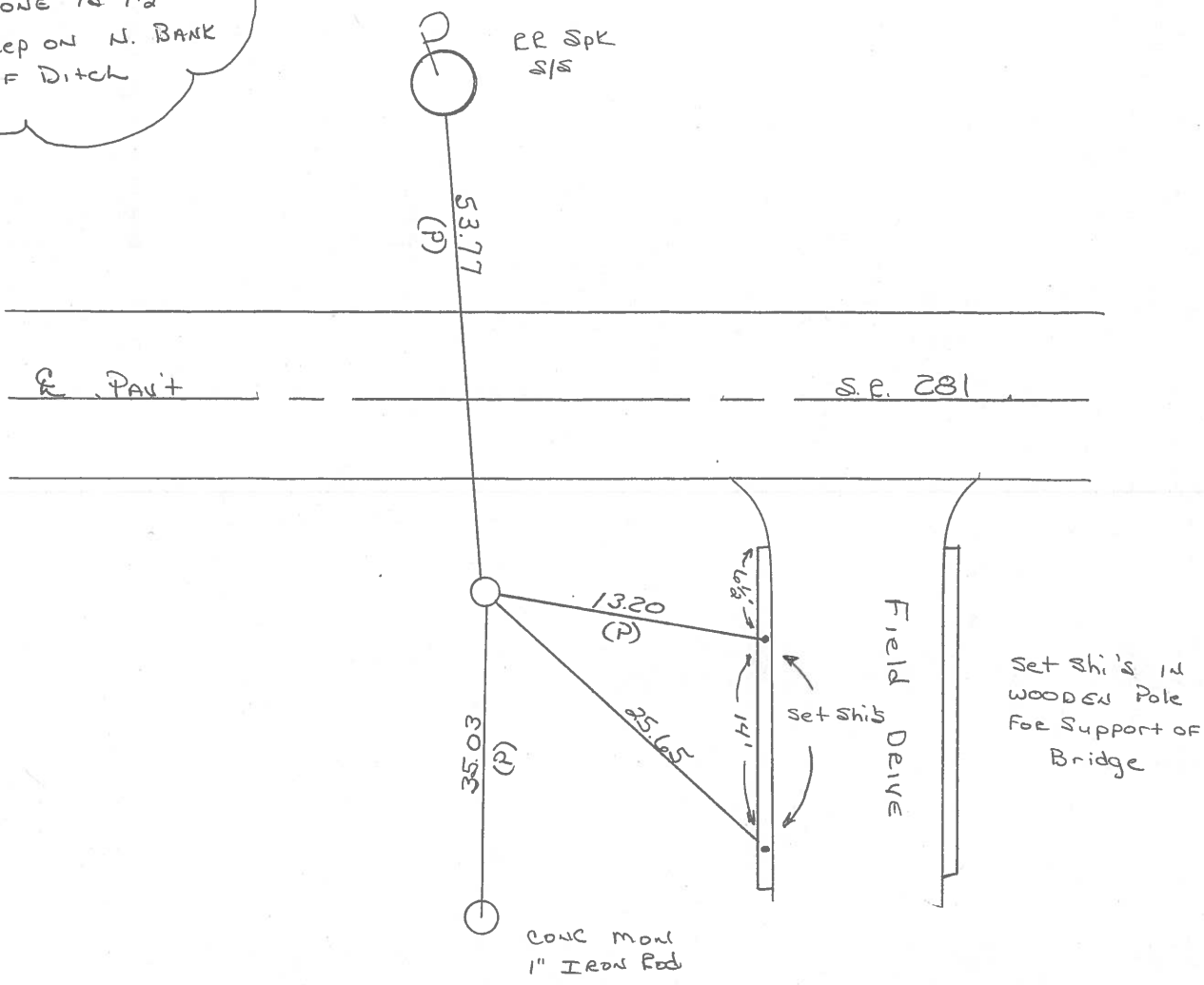
LEFT - C. PAV'T. - RIGHT 23.5

13.6 ~~TO~~ RT OF EDGE PAVEMENT

S.L.M. 346 +75



RECORD
 3/4" Iron Rod
 at surface set
 over stone
 Stone is 1 1/2'
 Deep on N. BANK
 of Ditch



OD.O.T. DISTRICT 2 SURVEY OFFICE

Sht. 4 of

County WOOD S.R. 281

Date 5-1-79

Township LIBERTY

Weather CLEAR

Section S. 1/4 POST SEC. 19

Temp. +48°

T4N, R10E

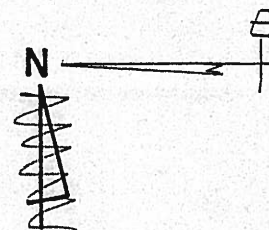
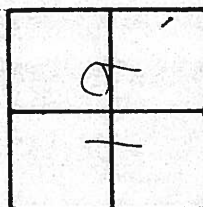
Personnel BURNSIDE

SMITH

BOWERS

KNAPE

MEAD

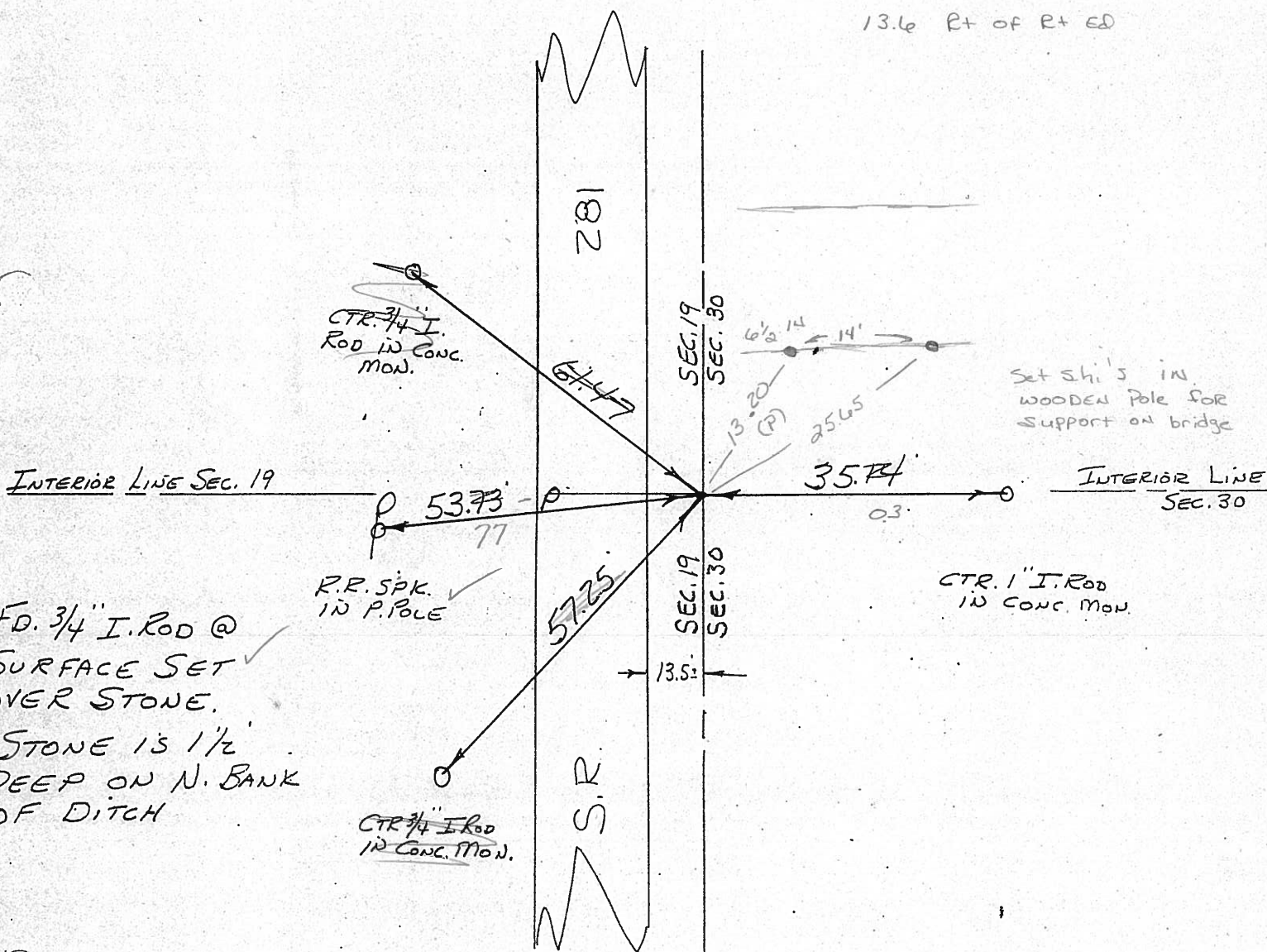


#15

346 + 74

23.5 R+ OF Q

13.6 R+ OF R+ ED



FD. 3/4" I. ROD @ SURFACE SET OVER STONE. STONE IS 1 1/2" DEEP ON N. BANK OF DITCH

Set Shi's in WOODEN Pole for support on bridge

R.R. SPK. IN P. POLE

CTR. 1" I. ROD IN CONC. MON.

CTR. 3/4" I. ROD IN CONC. MON.

CTR. 3/4" I. ROD IN CONC. MON.

PERSONNEL	TITLE	PERSONNEL	TITLE	COUNTY	DATE
ck. BY				WOOD	OK-8-5-66
SILVESTER				S. R. #281	WEATHER
BURNSIDE				SEC. 24 & 19	TEMP.
SMITH					

DESCRIPTION CONTROL TIES JOB NO. _____

LEFT	CENTER LINE	RIGHT
<p>STA. 26+55.2 S 1/4 P3ST SEC. 19 LIBERTY TWP. T-4-N R-10-E Δ = 0°-02' RT. STONE 15 30" N. OF N. EDGE OF DCH. BANK & 13.9' S. OF S. EDGE OF PAVEMENT</p> <p>#156</p>	<p>#15</p>	<p>R.R. Spk. P. POLE N. 53.76 SHINER T. POLE S.S.E. 31.73 "X"-N. END W. WALL E.S.E. 13.7 "X"-N. END E. WALL E.S.E. 26.6 "X"-TOP & OPENING CONC. BR. S.W. 20.66</p>
<p>STA. 317+85.3 S.E. COR. SEC. 24 MILTON TWP. Δ = 2°-20' RT. FO. 1" I. PIPE 10' S. OF S. EDGE PAVEMENT (RANGE LINE ROAD)</p> <p>#155</p>	<p>#14</p>	<p>SHINER P. POLE N.E. 56.8 SHINER P. POLE N.W. 58.9 SHINER T. POLE S.E. 44.8 "X"-WEST END STONE ABUT. W.S.W. 33.27 (P)</p>

PERSONNEL TITLE PERSONNEL TITLE

COUNTY Wood

DATE 12-4-57

S. R. #281

7-20-59

WEATHER 11-3-60 ✓

SEC.

Silvester-2-28-64

TEMP.

DESCRIPTION

LEFT

CENTER LINE

RIGHT

JOB NO.

Sta. 291+45.5
 5/4 post sec. 24 Milton,
 Twp. ~~Looked hub~~ over Stone
 $\Delta = 0^{\circ}03' Lt.$
 5' S. of S. edge part.

Shiner in T.P. S.W. 82.5
 X on W. end conc. dr. tile S.W. 20.6
 X on E. end conc. dr. tile S.E. 27.5

Placed I. Pin over Stone

(13) #154

Fd. 1" I. Pipe 10' S. of S. edge Part.
 Sta. 317+85.3 P.I.
 S.E. cor. sec. 24 Milton
 Twp. Stone
 $\Delta = 2^{\circ}20' Rt.$
 Range Line Rd.

Conc. Man. S.W. 40.1
~~X on N. end of E. Hdwt. S.S.E. 25.1~~
~~X on S. end W. Hdwt. S.S.W. 34.6~~
 Shiner in P.P. N.E. 56.1
 Shiner in P.P. N.W. 58.5
~~X on N. end W. Hdwt. S.W. 13.1~~
 Shiner in T.P. S.E. 44.90' 44.
 "X" in West end stone about N.S.W. 33.

(14) #155

F. Hub over stone. Stone 0.70' below surface. Replaced with New Hub.
 Sta. 26+55.2
 5/4 post sec. 19 Liberty
 Twp. Stone is 30" N. of
 N. edge of dch. bank of
 13.9' S. of S. edge of pum't
 $\Delta = 0^{\circ}2' Rt.$

Conc. monument SE 39.1
 E.R. spike head in P.P. N. 53
 Shiner in T.P. S.S.E. 31.73 31.1
 About 13.9' S. of Part.

(15) #156

New W. t. → E.S.E. "X" N. End W. Wall 13.71'
 E.S.E. "X" N. End E. Wall 26.65'
 S.W. "X" Top of opening Conc. Be. 20.66