

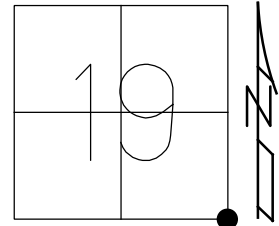
O.D.O.T. DISTRICT 2 SURVEY OFFICE (USE ONLY)

PERSONNEL \_\_\_\_\_ REFERENCE NO. 16 SHEET 5 OF 36

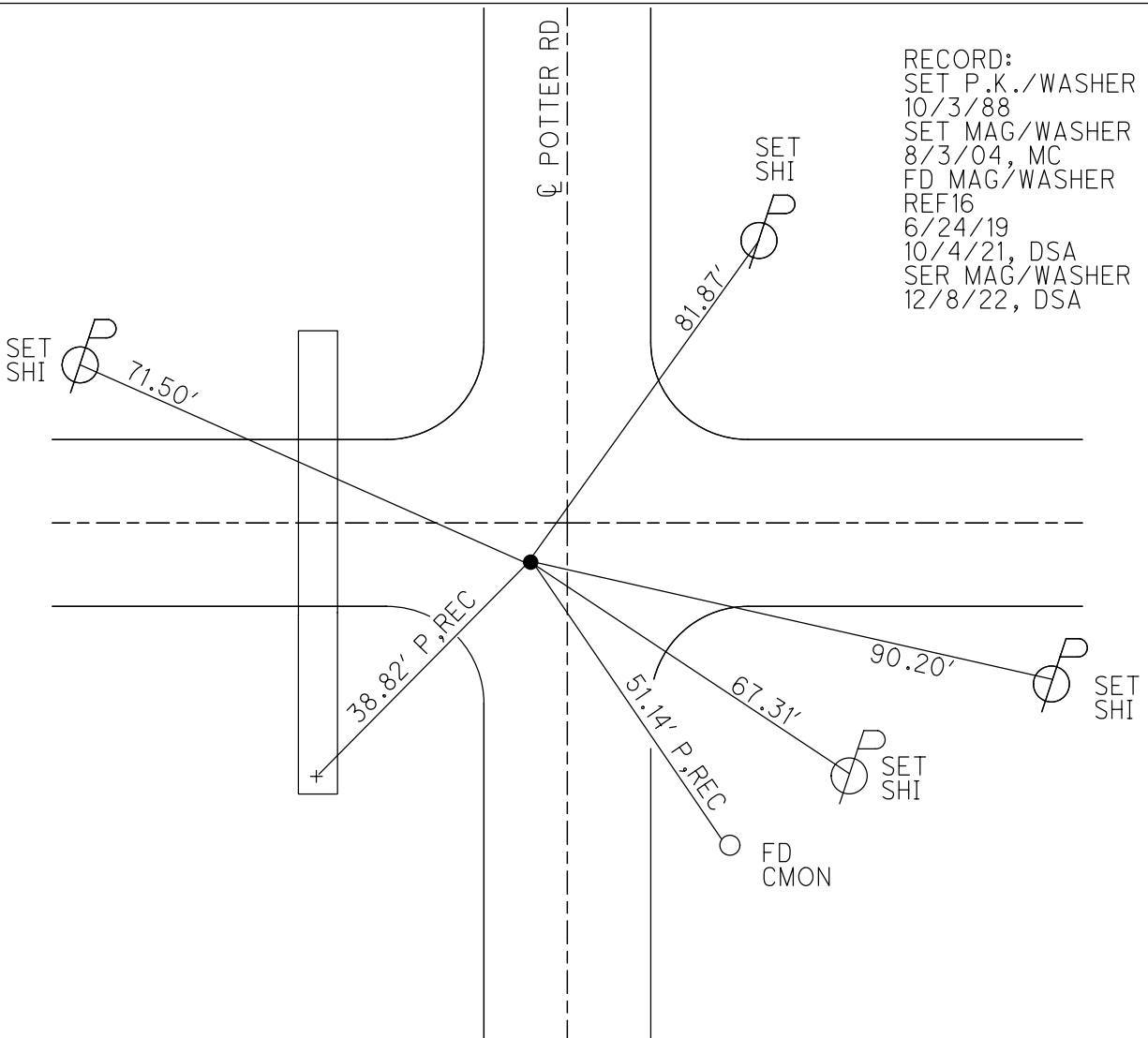
NOTES NIESE DATE 10/4/21 ROUTE SR 281  
 H.C. AUBLE WEATHER OVERCAST COUNTY WOOD  
 R.C. NIESE TEMP. 64° TOWNSHIP LIBERTY  
 SECTION 19

DWG BY RHOADES PID 94340 T 4 N R 10 E

TYPE MONUMENT MAG/WASHER  
 ON SURFACE - ~~BELOW~~ ON \_\_\_\_\_  
 OFFSET CL PAVEMENT 1.3' ~~LT~~ : RT  
 - TO - EDGE PAVEMENT  
 STATION: 372+61.09



HORIZ.DATUM: NAD83 2011 GEOID: NAVD88 2018  
 GRID: NORTHING: 591801.725 EASTING: 1625778.103



O.D.O.T. DISTRICT 2 SURVEY OFFICE (USE ONLY)

PERSONNEL

REFERENCE NO. 16

SHEET 5 OF 25

NOTES NUHFER

DATE 5-7-04

ROUTE S.R. 281

H.C. ARMS

WEATHER PT. CLOUDY

COUNTY WOOD

R.C. HOOKE

TEMP. +55°

TOWNSHIP LIBERTY

SECTION 19

T 4 N R 10 E

TYPE MONUMENT P.K./WASHER

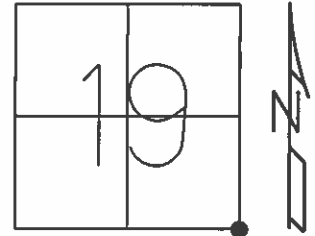
ON SURFACE - ~~BELOW~~ YES

~~BELOW~~ - ☉ PAV'T - RIGHT 1.3'

- TO - EDGE PAVEMENT

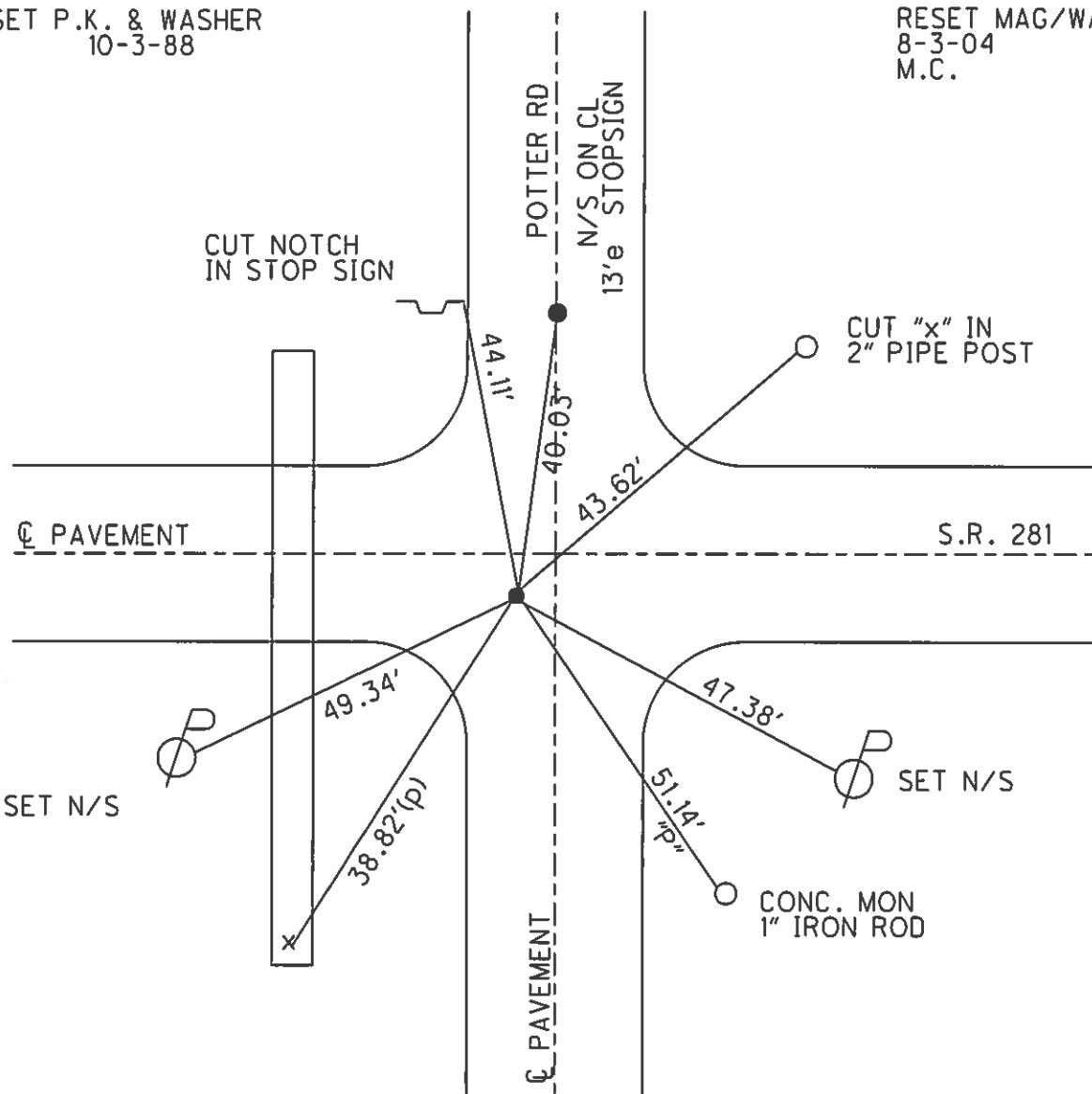
S.L.M. 373+19 (7.0' WEST \* POTTER RD.)

Grid: Northing: \_\_\_\_\_ Easting: \_\_\_\_\_



SET P.K. & WASHER  
10-3-88

RESET MAG/WASHER  
8-3-04  
M.C.



O.D.O.T. DISTRICT 2 SURVEY OFFICE

PERSONNEL

REFERENCE NO. 16

SHEET 5 OF 25

NOTES NUHFER

DATE 5-7-04

ROUTE S.R. 281

H.C. ARMS

WEATHER PT. CLDY

COUNTY WOOD

R.C. HOOKER

TEMP. +55°

TOWNSHIP LIBERTY

SECTION 19

T 4 N R 10 E

TYPE MONUMENT P.K./WASHER

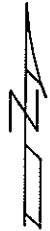
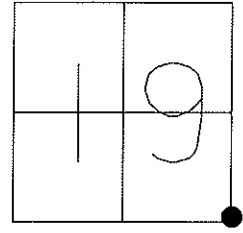
ON SURFACE YES

☉ PAV'T - RIGHT 1.3

RT EDGE PAVEMENT

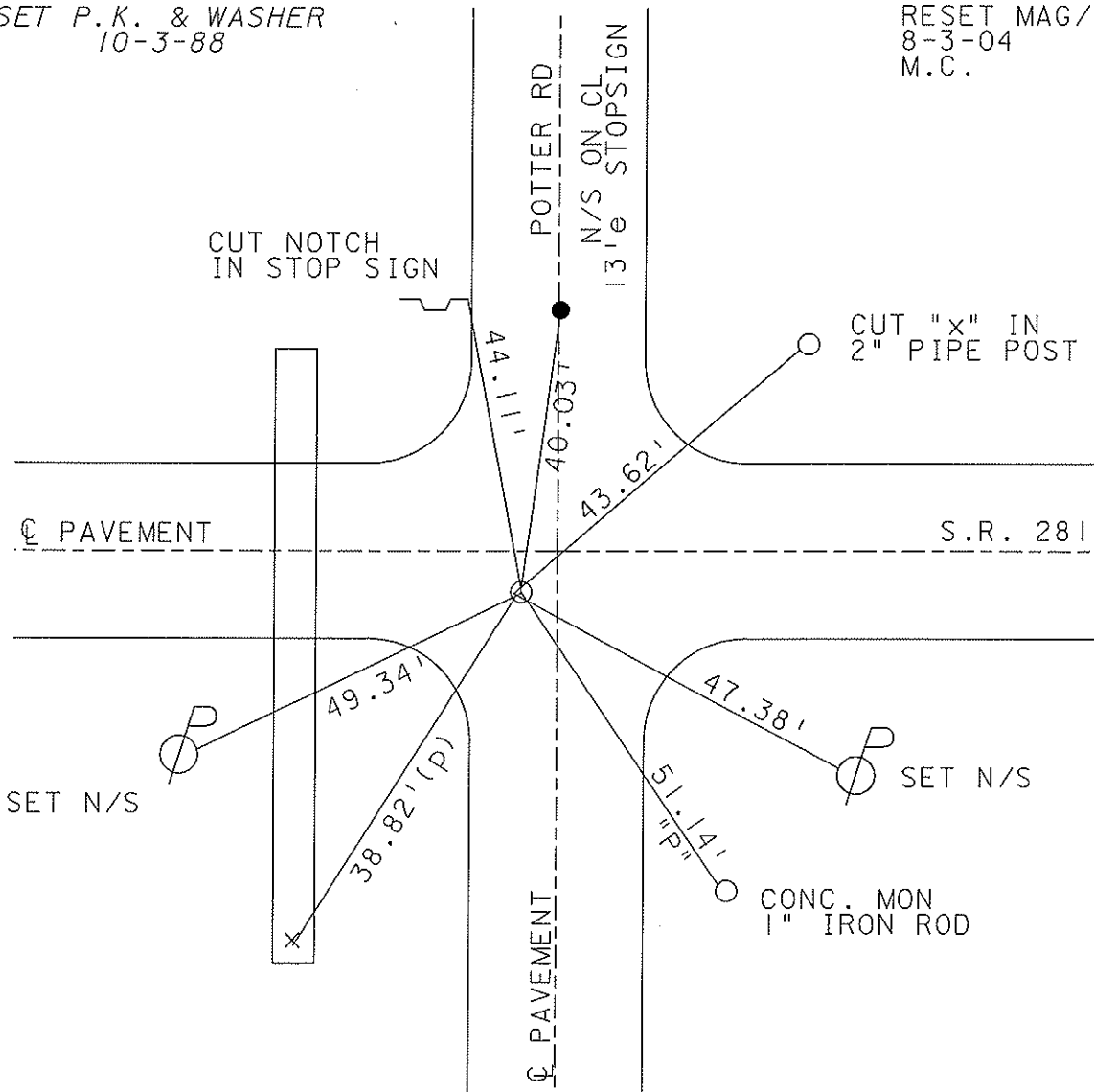
S.L.M. 373+19

(7.0' WEST ☉ POTTER RD)



SET P.K. & WASHER  
10-3-88

RESET MAG/WASHER  
8-3-04  
M.C.



# O.D.O.T. DISTRICT 2 SURVEY OFFICE

PERSONNEL

REFERENCE NO. 16

SHEET      OF     

NOTES BAENHISEL

H.C. Coehrke

DATE 8-24-88

ROUTE S.E. 281

R.C. Reed

WEATHER Sunny

COUNTY Wood

HOFFMAN

TEMP. +720

TOWNSHIP Liberty

SECTION 19

T 4 N R 10 E

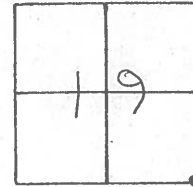
TYPE MONUMENT Sm RR Spk

ON SURFACE - ~~BELOW~~ yes

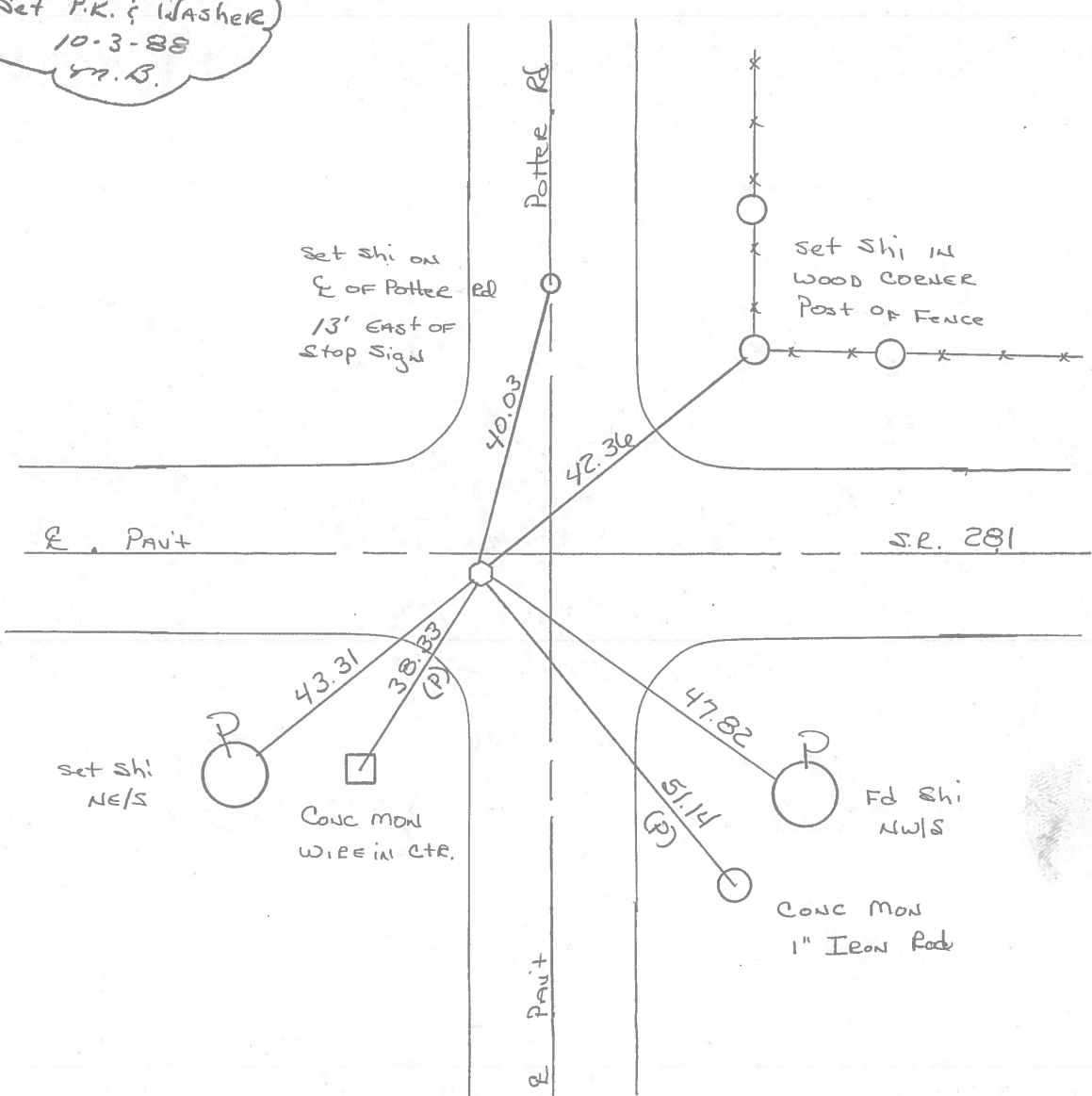
LEFT - ~~C~~ PAV'T. - RIGHT 1.3

TO - EDGE PAVEMENT 7.0 west of E Potter Rd

S.L.M. 373 + 19



Set P.K. & Washer  
10-3-88  
Y.B.



County WOOD S.R. 281

Date 5-1-79

Township LIBERTY

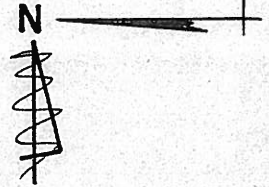
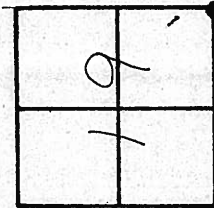
Weather CLEAR

Section S.E. COR SEC. 19

Temp. +52°

4N, R10E

Personnel BURNSIDE  
SMITH  
BOWERS  
KNAPPE  
MEAD



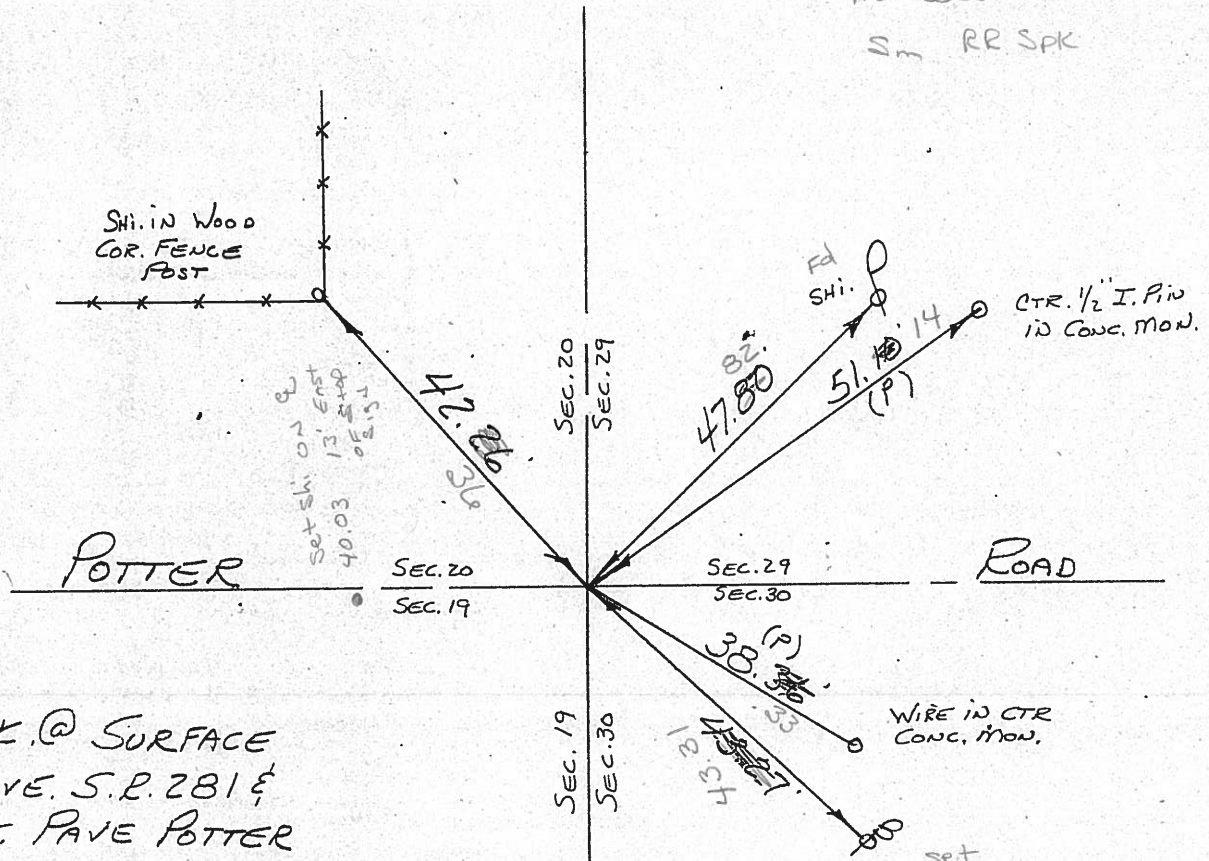
#16

373 + 19

1.3 RT OF E

7.0 west of E Potter

Sm RR SPK



FD. R.R. SPK. @ SURFACE  
IN CTR. PAVE. S.R. 281 &  
ON W. EDGE PAVE POTTER  
ROAD

RE-COPIED  
1-26-71

PERSONNEL	TITLE	PERSONNEL	TITLE	COUNTY	DATE	WEATHER	TEMP.
CK. BY				WOOD	OK-8-6-69		
BURNSIDE				S. R. #281			
SMITH				SEC. 19 & 20			
HOFFMAN							

DESCRIPTION: CONTROL TIES  
LEFT CENTER LINE RIGHT JOB NO.

LEFT	CENTER LINE	RIGHT
<p>STA. 79+64.9 S. 1/4 Post SEC. 20 LIBERTY TWP. Δ = 0°-01' RT. "BOAT SPIKE"</p> <p>#158</p>	<p>#17</p>	<p>SHINER IN Cor. Post. N.N.E. 31.72 SHINER BRACE POST N. 30.46 CONC. MON. N.W. 39.90 SHINER IN Cor. Post S. 41.40 SHINER 18" OAK. N.E. 87.35 SHINER P. POLE S. 41.40 SHINER 18" OAK. N. 37.30</p>
<p>STA. 53+17 S.E. COR. SEC 19 LIBERTY TWP. Δ = 1°-07' LT. "STONE" IRON PIN POTTER ROAD</p> <p>#157</p>	<p>#16</p>	<p>S.W. COR. N. HDWL. N.W. 33.63 E. COR. N. HDWL. N.N.W. 27.52 SHINER IN P. POLE S.E. 47.82 S.W. COR. STONE HDWL. S.E. 42.94 S.E. COR. STONE HDWL. S.S.W. 35.68 SHINER IN T. POLE S.W. 73.87 SHINER IN T. POLE N.W. 69.85 SHINER BRACE POLE S.W. 43.33<sup>(P)</sup></p>

PERSONNEL	TITLE	PERSONNEL	TITLE	COUNTY	DATE
				Wood	OK 12-4-57
				S. R. #281	7-22-59 M.J.
					WEATHER 11-3-60 W.F.
					Silvester 2-28-64
				SEC.	TEMP.

DESCRIPTION	LEFT	CENTER LINE	RIGHT	JOB NO.
Sta. 53+1.7			Shiner in cor. post N.E.	41.45
S.E. cor. sec. 19 Liberty			Shiner in P.P. S.E.	47.85
Twp. - stone - iron pin			S.W. cor. Stone Hdwl.	30.70
$\Delta = 1^{\circ} - 07' Lt.$			N.W. cor. Stone Hdwl.	33.21' 33.15
Potter Rd.		P.K. & shiner	S.W. Cor. Stone Hdwl. S.E.	42.95
			S.E. Cor. Stone Hdwl. S.S.W.	35.68
			S.W. shiner in T. Pole	73.90
				.72
Sta. 79+64.9			Shiner in cor. post N.N.E.	31.33
S. 1/4 post sec. 20 Liberty			Shiner in Br. post N. 30.44	30.58
Twp.			Shiner in Cor. post S. 41.25	41.30
$\Delta = 0^{\circ} - 1' Rt.$			Conc. mon. N.W. 40.00	39.90
R.R. spk.		P.K. & shiner	Conc. mon. - broke off S.W. 43.74	44.02
			f/leans over	To ctr.
			Shiner in 18" oak N.E.	87.62
				49.82
Fd. 3/4" Iron Rod				
Sta. 106+32.75			R.R. spk. in brace pole S.E.	49.86
S.E. cor. sec. 20 Liberty			Shiner in P.P. S.W. 43.57	43.55
Twp. Gaspipe stk. on top			N.W. cor. Stone Hdwl. S.W.	31.05
$\Delta = 1^{\circ} - 04' Rt.$		P.K. & shiner	Cor. Stone Hdwl. N.W. 25.05	24.87
Wingston Rd.			Shiner in brace pole N.W.	49.31
				49.14
				.20
				45.60
Fd. 3/4" Iron Rod			New	
Sta. 132+91.8			Shiner in 18" Ash S.	46.03
S. 1/4 post sec. 21 Liberty			Shiner in P&T pole S.W.	49.10'
Twp. Stone		P.K. & shiner gone	Shiner in 30" oak S.E.	86.10'
$\Delta = 0^{\circ} - 01' Lt.$			Shiner in 18" ash S. 73.51	73.56
			Conc. mon. S.W. 41.77	41.87
			N.W. COR. Conc. blk Fnd. S.S.E. 6" above Gr.	84.50
			N.E. COR. S.W. Hdwl.	24.38'
			N.W. coe. S.E. "	30.90'