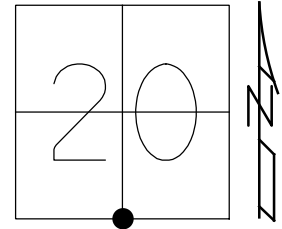


O.D.O.T. DISTRICT 2 SURVEY OFFICE (USE ONLY)

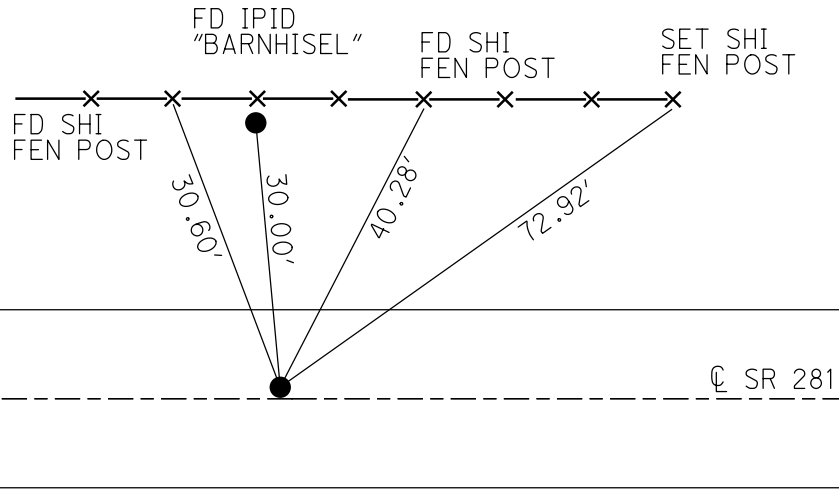
PERSONNEL \_\_\_\_\_ REFERENCE NO. 17 SHEET 6 OF 36  
 NOTES NIESE DATE 10/4/21 ROUTE SR 281  
 H.C. AUBLE WEATHER OVERCAST COUNTY WOOD  
 R.C. NIESE TEMP. 65° TOWNSHIP LIBERTY  
 DWG BY RHOADES PID 94340 SECTION 20  
 T 4 N R 10 E

TYPE MONUMENT MAG/WASHER  
 ON SURFACE - ~~BELOW~~ ON \_\_\_\_\_  
 OFFSET  $\phi$  PAVEMENT 0.4' LT : ~~RT~~  
9.9' TO LT EDGE PAVEMENT  
 STATION: 399+21.66



HORZ.DATUM: NAD83 2011 GEOID: NAVD88 2018  
 GRID: NORTHING: 591732.509 EASTING: 1628437.773

RECORD:  
 SET SM.R.R.SPIKE  
 10/3/88  
 FD SM.R.R.SPIKE  
 5/7/04, RGN  
 SET MAG/WASHER  
 8/3/04, MC  
 FD MAG/WASHER  
 REF17  
 10/4/21, DSA  
 SET MAG/WASHER  
 12/8/22, DSA



O.D.O.T. DISTRICT 2 SURVEY OFFICE (USE ONLY)

PERSONNEL

REFERENCE NO. 17

SHEET 6 OF 25

NOTES NUHFER

DATE 5-7-04

ROUTE S.R. 281

H.C. ARMS

WEATHER PT. CLOUDY

COUNTY WOOD

R.C. HOOKE

TEMP. +55°

TOWNSHIP LIBERTY

SECTION 20

T 4 N R 10 E

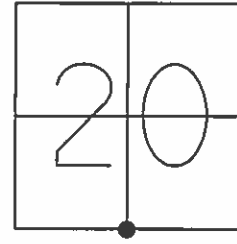
TYPE MONUMENT SM. R.R. SPIKE

ON SURFACE - ~~LOW~~ YES

LEFT - Q PAV'T ~~RIGHT~~ 0.8'

9.9' TO LT. EDGE PAVEMENT

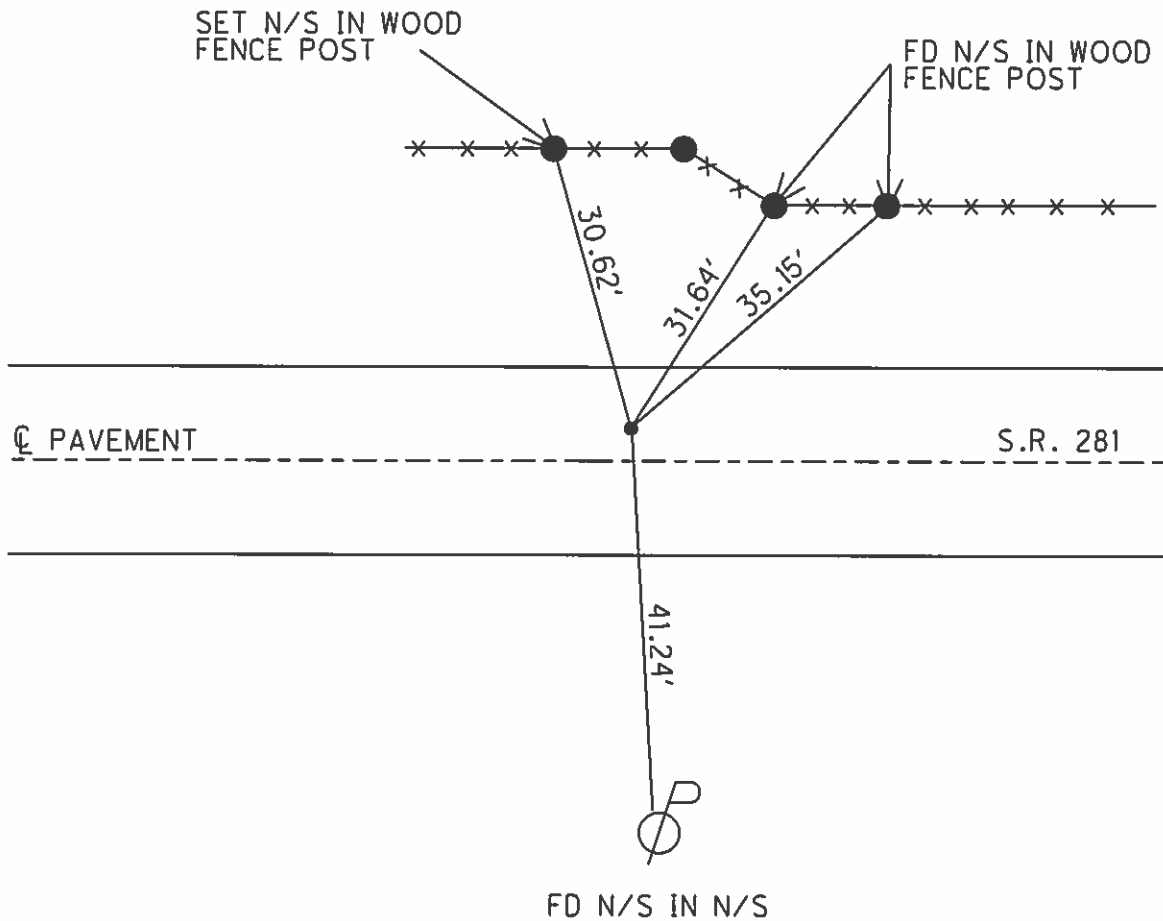
S.L.M. 399+80



Grid: Northing: \_\_\_\_\_ Easting: \_\_\_\_\_

RESET MAG/WASHER  
8-3-04  
M.C.

SET SM. R.R. SPIKE  
10-3-88



O.D.O.T. DISTRICT 2 SURVEY OFFICE

PERSONNEL

REFERENCE NO. 17

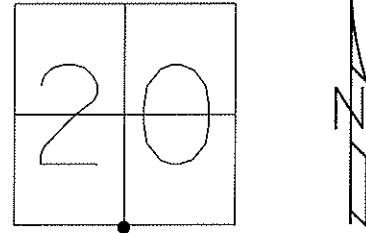
SHEET 6 OF 25

NOTES NUHFER  
 H.C. ARMS  
 R.C. HOOKER

DATE 5-7-04  
 WEATHER PT. CLOUDY  
 TEMP. +55°

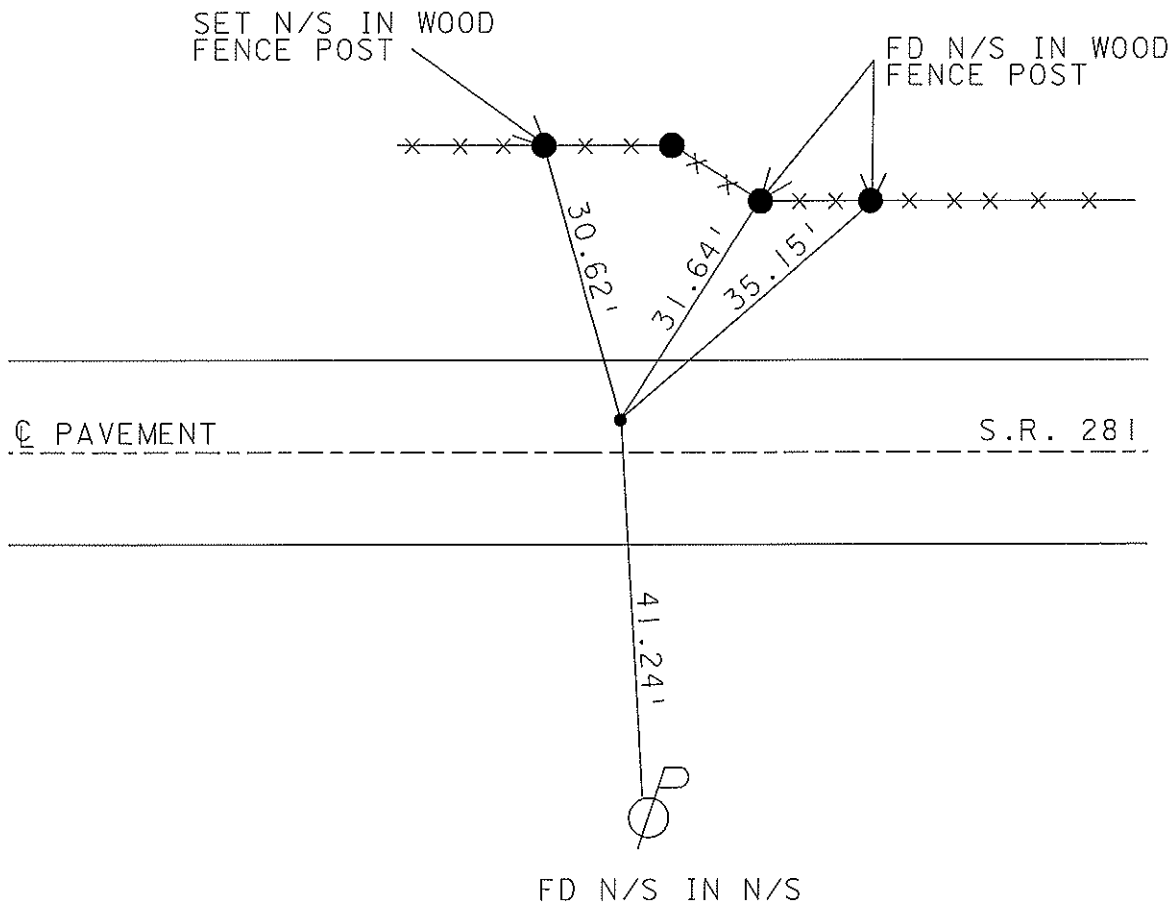
ROUTE S.R. 281  
 COUNTY WOOD  
 TOWNSHIP LIBERTY  
 SECTION 20  
T 4 N R 10 E

TYPE MONUMENT SM. R.R. SPIKE  
 ON SURFACE YES  
 LEFT - Q PAV'T 0.8  
9.9 TO LT. EDGE PAVEMENT  
 S.L.M. 399+80



RESET MAG/WASHER  
 8-3-04  
 M.C.

SET SM. R.R. SPIKE  
 10-3-88



# O.D.O.T. DISTRICT 2 SURVEY OFFICE

PERSONNEL

REFERENCE NO. 17

SHEET      OF     

NOTES BARNHISEL

H.C. Loehrke

R.C. Reed

Hoffman

DATE 8-24-88

WEATHER SUNNY

TEMP. +72°

ROUTE S.P. 281

COUNTY Wood

TOWNSHIP Liberty

SECTION 20

T 4 N R 10 E

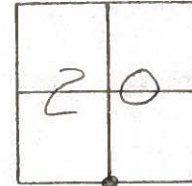
TYPE MONUMENT Sm RE Spk

ON SURFACE - BELOW yes

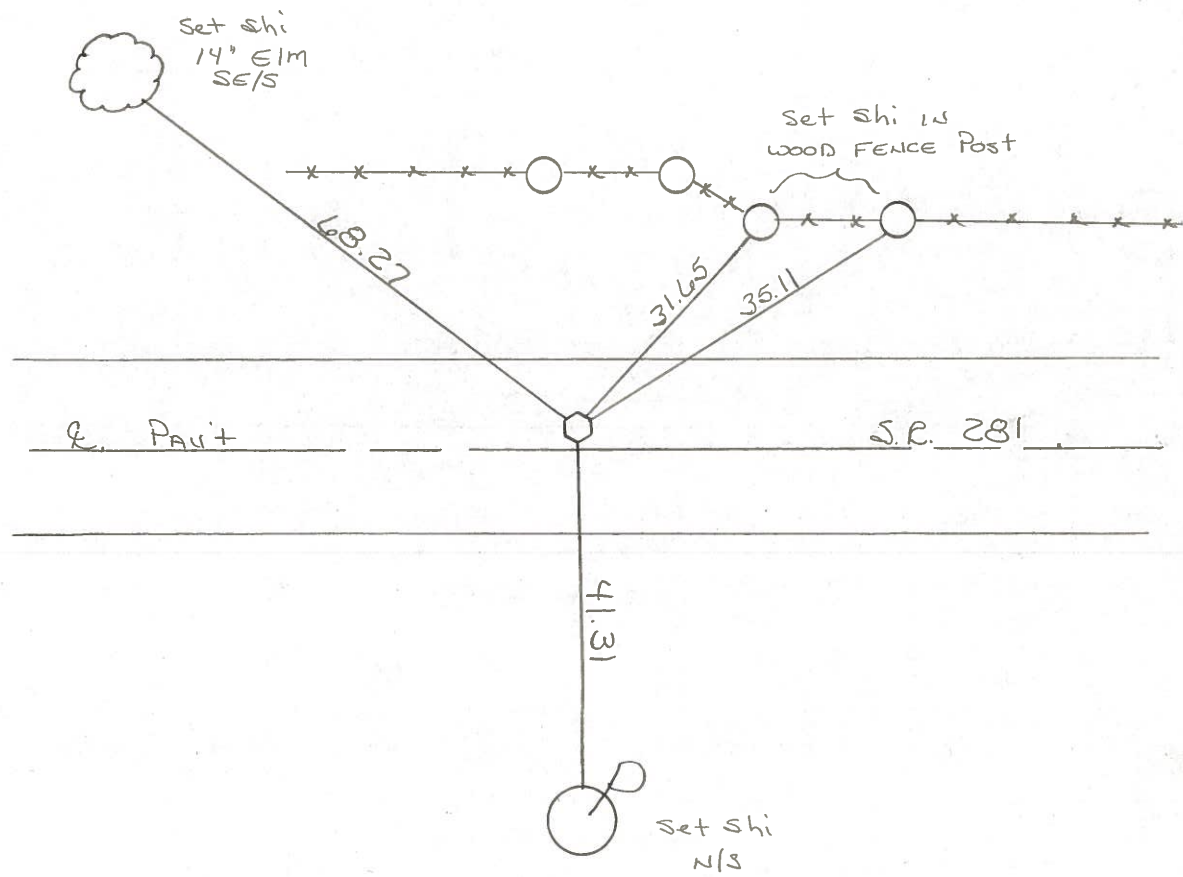
LEFT - C PAV'T. - RIGHT 0.8

9.9 TO L EDGE PAVEMENT

S.L.M. 399+80



Set Sm RE Spk  
10-3-88  
M.B.



County WOOD S.R. 281

Date 5-1-79

Township LIBERTY

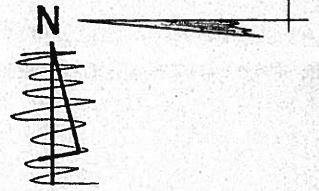
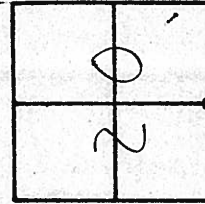
Weather CLEAR

Section S 1/4 Post SEC. 20

Temp. +55°

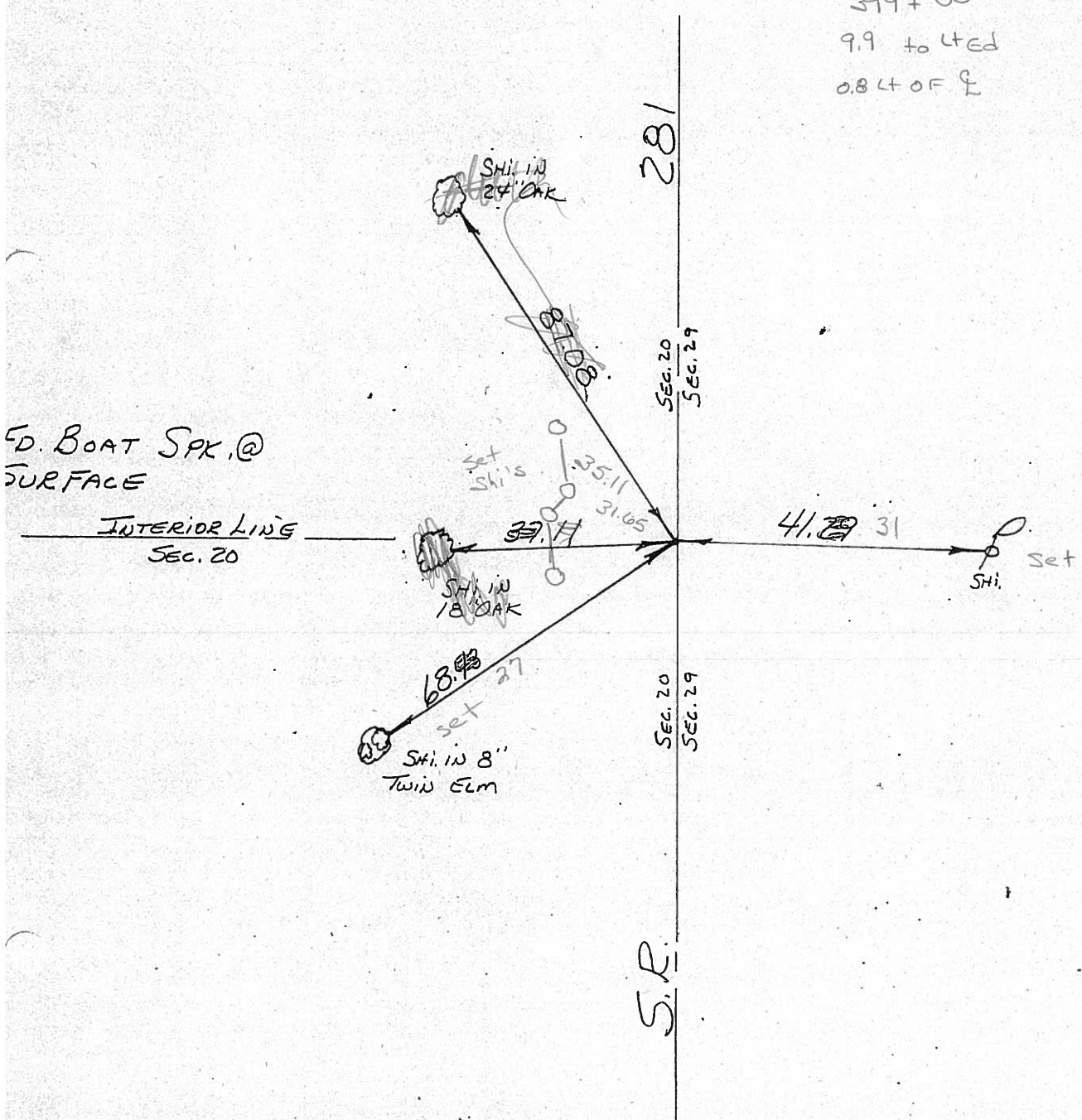
T4N, R10E

Personnel BURNSIDE  
SMITH  
BOWERS  
KNAPPE  
MEAD



# 17

Sm RR Spk  
399 + 80  
9.9 to 4th  
0.84 of E



1-26-71

PERSONNEL	TITLE	PERSONNEL	TITLE	COUNTY	DATE
CK. BY				WOOD	OK-8-6-69
BURNSIDE				S. R. #281	WEATHER
SMITH				SEC. 19 & 20	TEMP.
HOFFMAN					

DESCRIPTION CONTROL TIES JOB NO.

LEFT	CENTER LINE	RIGHT
<p>STA. 79+64.9 S. 1/4 Post SEC. 20 LIBERTY TWP. Δ = 0° 01' ET. "BOAT SPIKE"</p> <p>#158</p>	<p>#17</p>	<p>SHINER IN COR. POST. N.N.E. 31.7 SHINER BRACE POST N. 30.46 CONC. MON. N.W. 39.96 SHINER IN COR. POST S. 41.46 SHINER 18" OAK. N.E. 87.35 SHINER P. POLE S. 41.46 SHINER 18" OAK. N. 37.30</p>
<p>STA. 53+17 S.E. COR. SEC 19 LIBERTY TWP. Δ = 1° 07' LT. "STONE" IRON PIN POTTER ROAD</p> <p>#157</p>	<p>#16</p>	<p>S.W. COR. N. HOWL. N.W. 33.6 E. COR. N. HOWL. N.N.W. 27.5 SHINER IN P. POLE S.E. 47.8 S.W. COR. STONE HOWL. S.E. 42.9 S.E. COR. STONE HOWL. S.S.W. 35.6 SHINER IN T. POLE S.W. 73.8 SHINER IN T. POLE N.W. 69.8 SHINER BRACE POLE S.W. 43.3</p>



PERSONNEL	TITLE	PERSONNEL	TITLE	COUNTY	DATE
				Wood	OK 12-4-57
				S. R. #281	7-22-59 M
					WEATHER 11-3-60 W.
					Silvester 2-28-64
				SEC.	TEMP.

DESCRIPTION	LEFT	CENTER LINE	RIGHT	JOB NO.
Sta. 53+1.7			Shiner in cor. post N.E.	41.4
S.E. cor. sec. 19 Liberty			Shiner in P.P. S.E.	47.8
Twp. - Stone - Iron pin			S.W. cor. Stone Hdwl.	30.7
$\Delta = 19^{\circ}-07' Lt.$			N.W. cor. Stone Hdwl.	33.21' 33.1
Potter Rd.		P.K. & Shiner	S.W. Cor. Stone Hdwl. S.E.	42.9
			S.E. cor. Stone Hdwl. S.S.W.	35.6
			s.w. shiner in T. Pole	73.9
Sta. 77+64.9			Shiner in cor. post N.N.E.	31.3
S. 1/4 post sec. 20 Liberty			Shiner in Br. post N. 30.44	30.5
Twp.			Shiner in Cor. post S. 41.25	41.3
$\Delta = 0^{\circ}-1' Rt.$			Conc. mon. N.W. 40.00	39.5
R.R. spk.		P.K. & Shiner	Conc. mon. - broke off S.W. 43.74	44.0
			flans over	To ct.
			Shiner in 18" oak N.E.	87.62
Fd. 3/4" Red				49.6
Sta. 106+32.7			R.R. spk. in brace pole S.E.	49.1
S.E. cor. sec. 20 Liberty			Shiner in P.P. S.	43.57 43.1
Twp. Gusspe st. on top			N.W. cor. Stone hdw. S.W.	31.0
$\Delta = 1^{\circ}-04' Lt.$		P.K. & Shiner	S. cor. Stone Hdwl. N.W. 25.05	24.8
Wingston Rd.			Shiner in brace pole N.W.	49.3
				49.14
				1.21
Fd. 3/4" Iron Rod.			New	45.6
Sta. 132+91.8			Shiner in 18" Ash S.	46.0
S. 1/4 post sec. 21 Liberty			Shiner in P&T pole S.W.	49.16
Twp. Stone		P.K. & Shiner	<del>Shiner in 30" oak S.E.</del>	<del>86.10</del>
$\Delta = 0^{\circ}-01' Lt.$		gone	Shiner in 18" ash S. 7.51	73.5
			Conc. mon. S.W. 41.7	41.8
			N.W. COR. CONC. blk Fnd. S.S.E. 6" above	84.5
			N.E. Cor. S.W. Hdwl.	24.38'
			N.W. cor. S.E. "	30.90'