

O.D.O.T. DISTRICT 2 SURVEY OFFICE (USE ONLY)

PERSONNEL

REFERENCE NO. 18

SHEET 7 OF 36

NOTES NIESE DATE 10/4/21
 H.C. AUBLE WEATHER OVERCAST
 R.C. NIESE TEMP. 65°

ROUTE SR 281
 COUNTY WOOD
 TOWNSHIP LIBERTY
 SECTION 20
 T 4 N R 10 E

DWG BY RHOADES PID 94340

TYPE MONUMENT MAG/WASHER

ON SURFACE - ~~BELOW~~ ON

OFFSET C PAVEMENT 0.3' LT : ~~RT~~

9.9' TO LT EDGE PAVEMENT

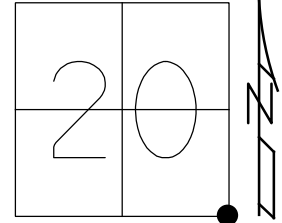
STATION: 425+88.44

HORZ.DATUM: NAD83 2011

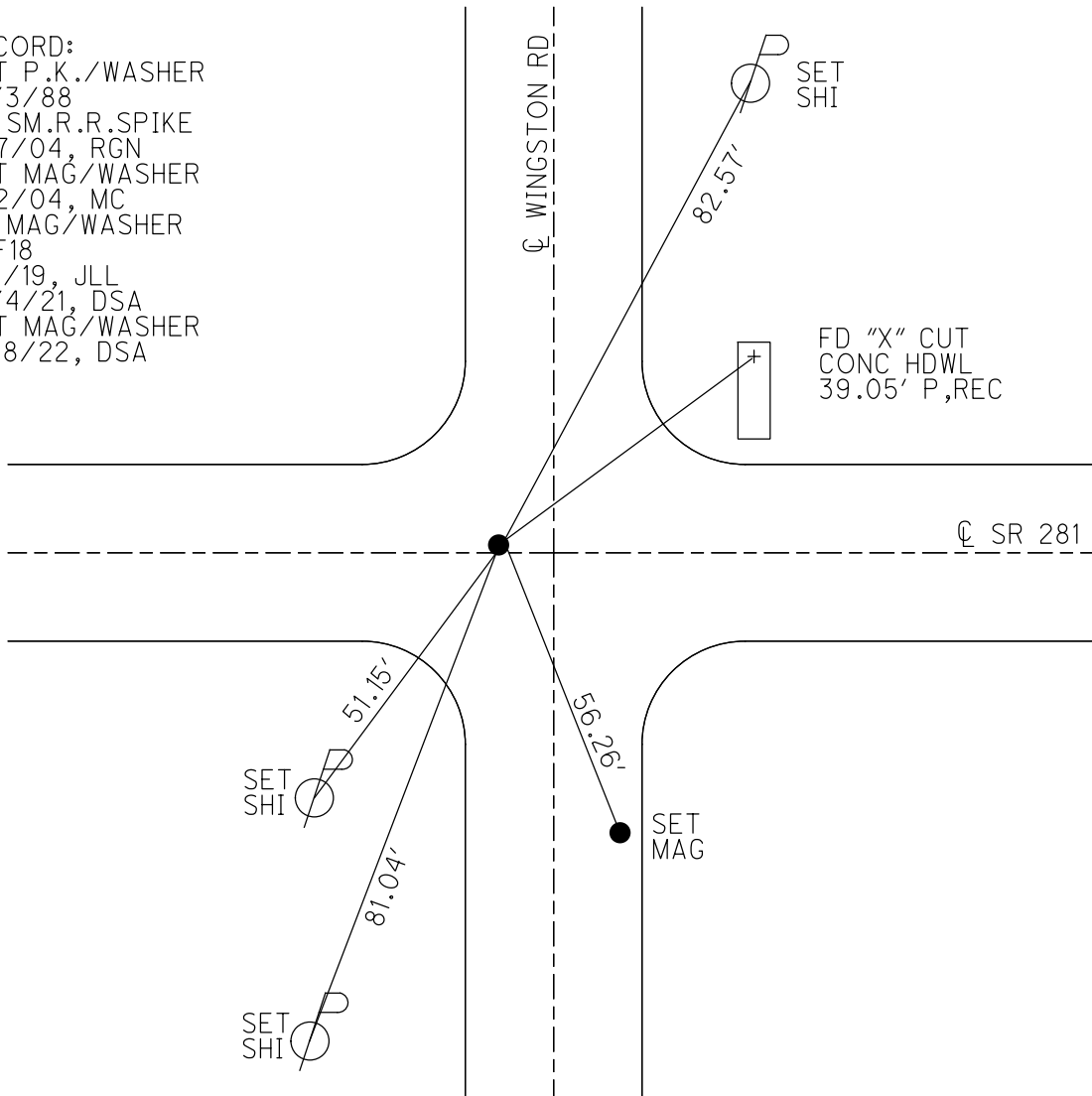
GEOID: NAVD88 2018

GRID: NORTHING: 591663.377

EASTING: 1631103.661



RECORD:
 SET P.K./WASHER
 10/3/88
 FD SM.R.R.SPIKE
 5/7/04, RGN
 SET MAG/WASHER
 8/2/04, MC
 FD MAG/WASHER
 REF18
 7/1/19, JLL
 10/4/21, DSA
 SET MAG/WASHER
 12/8/22, DSA



O.D.O.T. DISTRICT 2 SURVEY OFFICE (USE ONLY)

PERSONNEL

REFERENCE NO. 18

SHEET 7 OF 25

NOTES NUHFER

DATE 5-7-04

ROUTE S.R. 281

H.C. ARMS

WEATHER PT. CLOUDY

COUNTY WOOD

R.C. HOOKE

TEMP. +55°

TOWNSHIP LIBERTY

SECTION 20

T 4 N R 10 E

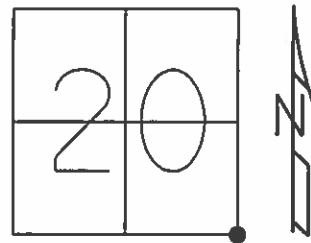
TYPE MONUMENT SM. R.R. SPIKE

ON SURFACE - ~~BELOW~~ YES

LEFT - Q PAV'T ~~RIGHT~~ 0.3'

9.9' TO LT. EDGE PAVEMENT

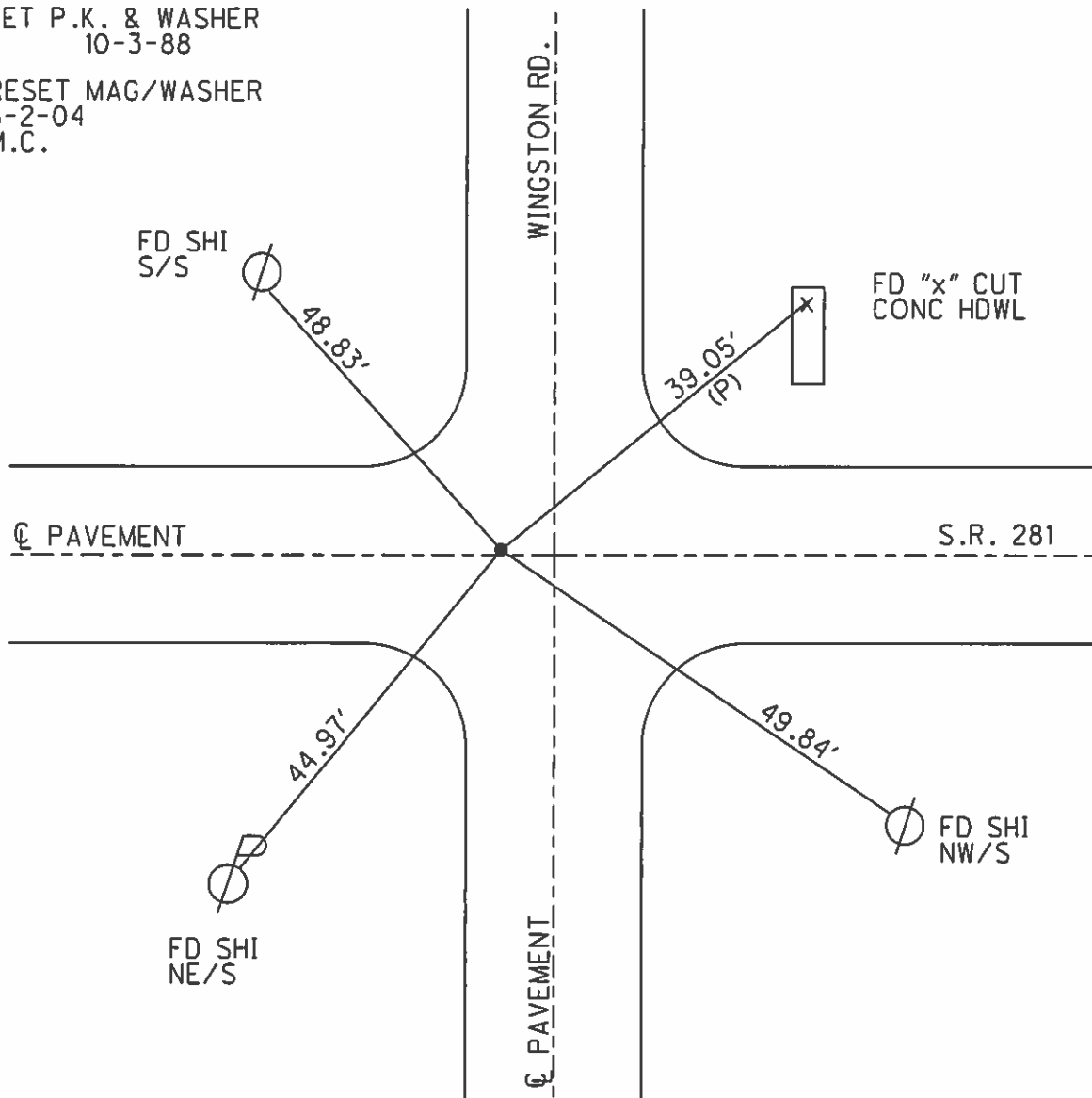
S.L.M. 426+48



Grid: Northing: _____ Easting: _____

SET P.K. & WASHER
10-3-88

RESET MAG/WASHER
8-2-04
M.C.



O.D.O.T. DISTRICT 2 SURVEY OFFICE

PERSONNEL

REFERENCE NO. 18

SHEET OF

NOTES BAENTHSEL

H.C. Loehrke

R.C. Reed

Hoffman

DATE 8-24-88

WEATHER Sunny

TEMP. +72°

ROUTE S.R. 281

COUNTY Wood

TOWNSHIP Liberty

SECTION 20

T 4 N R 10 E

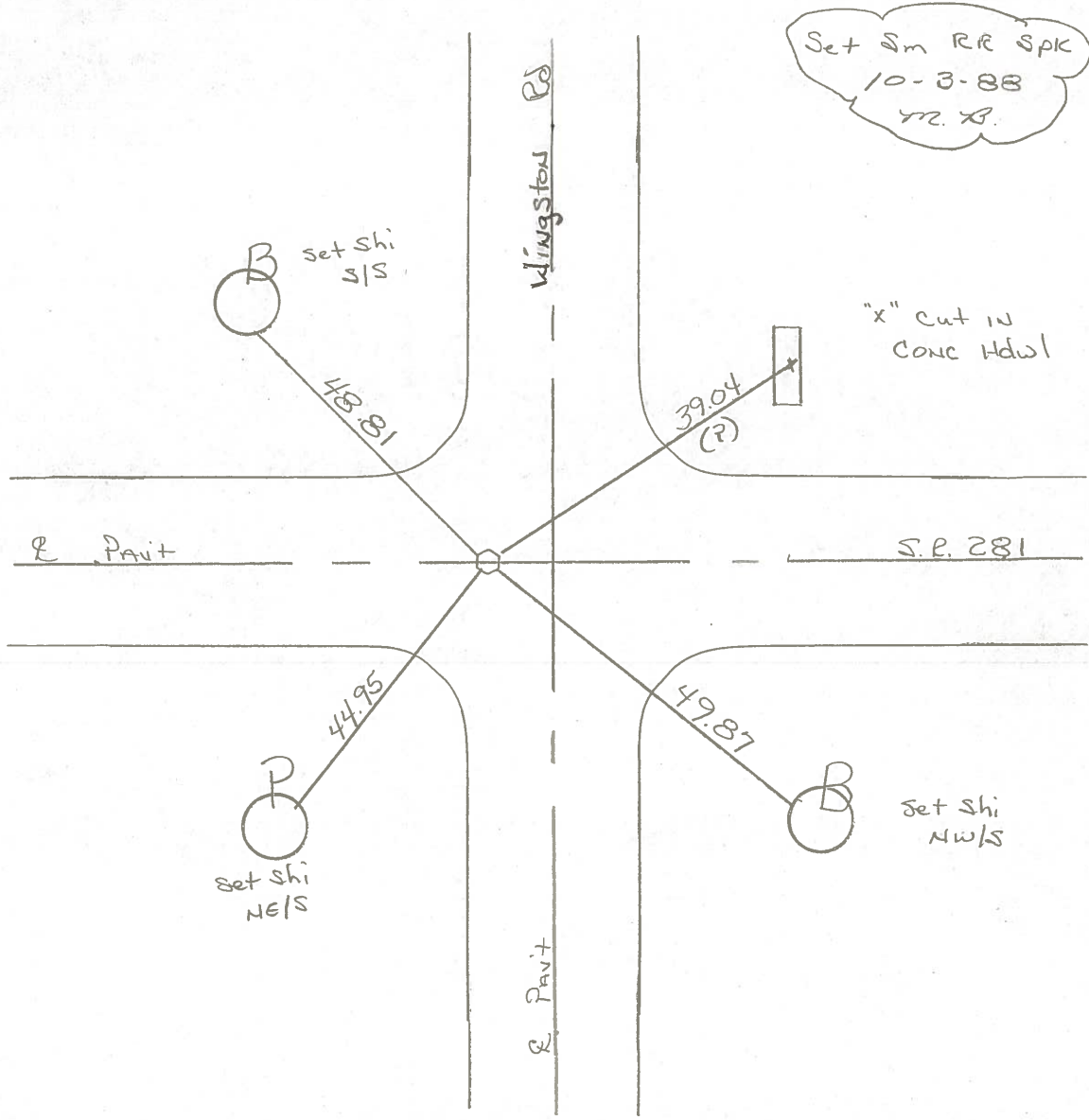
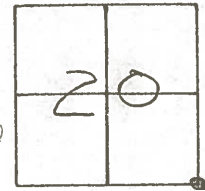
TYPE MONUMENT Sm RR Spk

ON SURFACE - ~~BELOW~~ yes

~~LEFT - & PAV'T. - RIGHT~~ yes

- TO - EDGE PAVEMENT 5.5 west of E Wingston Rd

S.L.M. 426 + 48



QD.O.T. DISTRICT 2 SURVEY OFFICE

Sht. 7 of

County WOOD S.R. 281

Date 5-1-79

Township LIBERTY

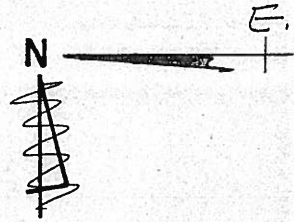
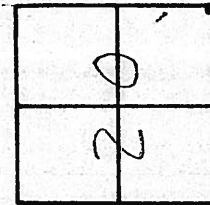
Weather CLEAR

Section S.E. COR. SEC. 20

Temp. +55°

T4N, R10E

Personnel BURNSIDE
SMITH
BOWERS
KNAPE
MEAD

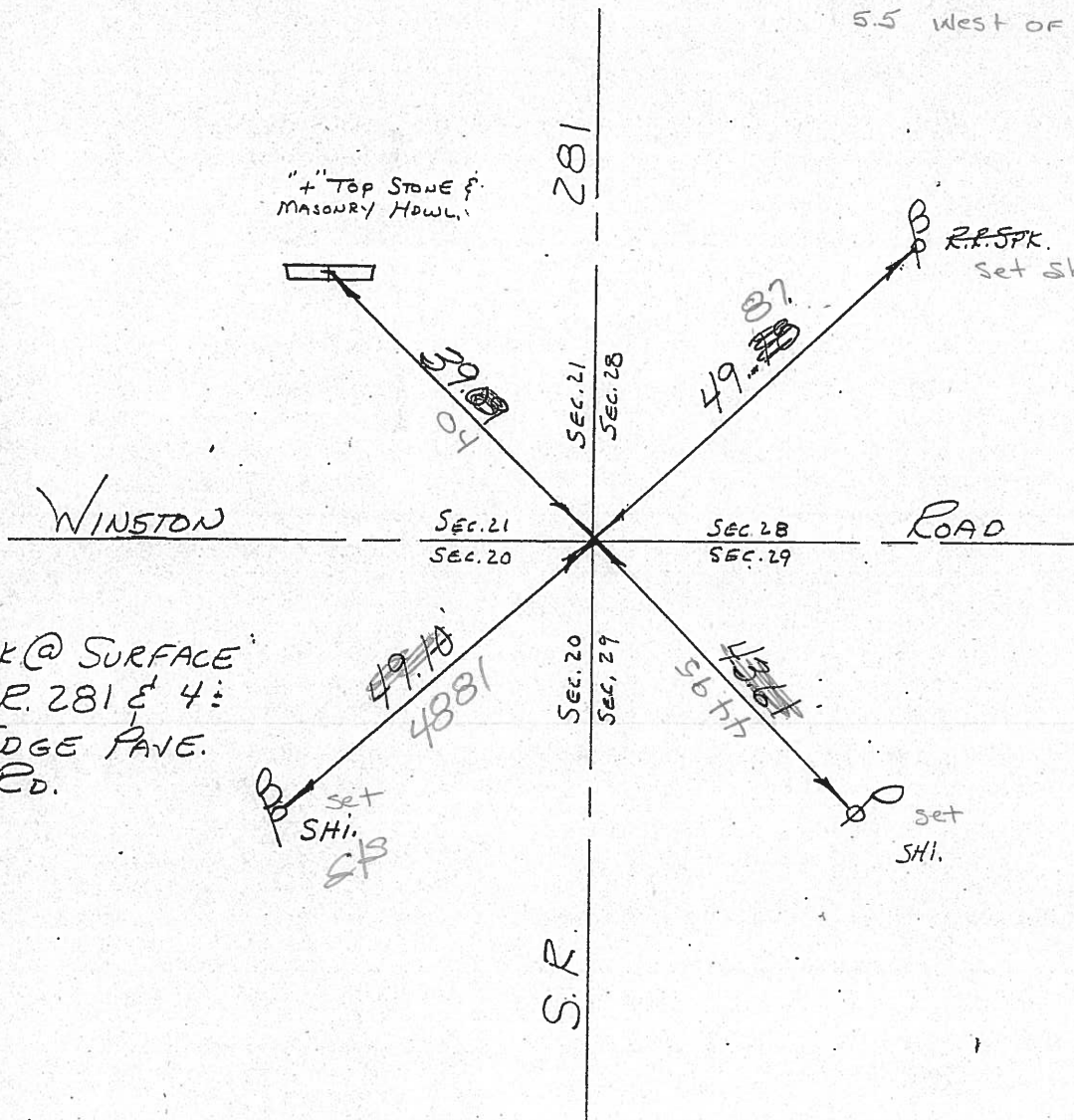


18

426 + 48

ON E

5.5 West of E WINSTON



FD. BOAT SPK @ SURFACE
ON CTR. S.R. 281 E 4:
E. OF W. EDGE PAVE.
WINSTON RD.

PERSONNEL	TITLE	PERSONNEL	TITLE	COUNTY	DATE
				Wood	OK-8-6-69
				S. R. #281	WEATHER
				SEC. 20 & 21	TEMP.

DESCRIPTION	LEFT	CENTER LINE	RIGHT	JOB NO.
-------------	------	-------------	-------	---------

STA. 132+91.8 5/4 Post SEC. 21 LIBERTY TWP. $\Delta = 0^{\circ}-01' LT.$ "STONE" SET BOAT Spk. #160	#19		SHINER IN 30' ASH S. 45.48' SHINER IN P. & T. POLE S.W. 48.98' SHINER IN 30' ASH S. 92.07' CONC. MON. S.W. 41.67' 4' MAIL BOX PIPE Post. E.S.E. 42.89' N.E. COR. S.W. HOWL. 24.38' N.W. COR. S.E. HOWL. 30.90'	
STA. 106+32.75 S.E. COR. SEC. 20 LIBERTY TWP. $\Delta = 1^{\circ}-04' RT.$ BOAT SPIKE WINGSTON ROAD #159	#18		R.R. Spk. IN BRACE POLE S.E. 49.78' SHINER IN P. POLE S.W. 43.59' N.W. COR. STONE HOWL. S.W. 31.05' S.E. COR. STONE HOWL. N.W. 25.18' SHINER BRACE POLE N.W. 49.73'	

PERSONNEL	TITLE	PERSONNEL	TITLE	COUNTY	DATE
				Wood	OK 12-4-57
				S. R. #281	7-22-59 M
					WEATHER 11-3-60 W.
					Silvester 2-29-64
				SEC.	TEMP.

DESCRIPTION	LEFT	CENTER LINE	RIGHT	JOB NO.
Sta. 53+1.7			Shiner in cor. post N.E.	41.4
S.E. cor. sec. 19 Liberty			Shiner in P.P. S.E.	47.8
Twp. - stone - iron pin			S.W. cor. stone Hdwl.	30.7
$\Delta = 1^{\circ} - 02' Lt.$			N.W. cor. stone Hdwl.	33.21' 33.7
Potter Rd.		P.K. & shiner	S.W. cor. stone Hdwl. S.E.	42.9
			S.E. cor. stone Hdwl. S.S.W.	35.6
(16)	#157		s.w. shiner in T. Pole	73.9
Sta. 77+64.9			Shiner in cor. post N.N.E.	31.3
S. 1/4 post sec. 20 Liberty			Shiner in Br. post N. 30.44	30.5
Twp.			Shiner in Cor. post S. 41.25	41.3
$\Delta = 0^{\circ} - 1' Rt.$			Conc. mon. N.W. 40.00	37.5
R.R. spk.		P.K. & shiner	Conc. mon. break off S.W. 43.74	44.0
	#158		<i>4/5 ans over</i>	To Ct.
			Shiner in 18" oak N.E.	87.62
Fd. 3/4" Iron Rod				49.6
Sta. 106+32.7			R.R. spk. in brace pole S.W.	49.7
S.E. cor. sec. 20 Liberty			Shiner in P.P. S.	43.57 43.1
Twp. Gasperey str. on top			N.W. cor. stone hdl. S.W.	31.0
$\Delta = 1^{\circ} - 04' Lt.$		P.K. & shiner	Cor. Stone Hdwl. N.W. 25.05	24.8
Wingston Rd.			Shiner in brace pole N.W.	49.5
	#159			49.14
Fd. 3/4" Iron Rod				45.6
Sta. 132+91.8			New Shiner in 18" Ash S.	46.0
S. 1/4 post sec. 21 Liberty			Shiner in PdT pole S.W.	49.16
Twp. Stone		P.K. & shiner gone	Shiner in 30" oak S.E.	86.10
$\Delta = 0^{\circ} - 01' Lt.$			Shiner in 18" ash S. 7.51	73.5
			Conc. mon. S.W. 41.7	41.8
	#160		N.W. COR. Conc. blk End. S.E.E. 6' above	84.5
			N.E. Cor. S.W. Hdwl.	24.38'
			N.W. cor. S.E. "	30.90'