

O.D.O.T. DISTRICT 2 SURVEY OFFICE (USE ONLY)

PERSONNEL

REFERENCE NO. 19

SHEET 8 OF 36

NOTES NIESE  
 H.C. AUBLE  
 R.C. NIESE

DATE 10/4/21  
 WEATHER OVERCAST  
 TEMP. 65°

ROUTE SR 281  
 COUNTY WOOD  
 TOWNSHIP LIBERTY  
 SECTION 21  
 T 4 N R 10 E

DWG BY RHOADES PID 94340

TYPE MONUMENT SM.R.R.SPIKE

~~ON SURFACE~~ - BELOW 3.5"

OFFSET  $\odot$  PAVEMENT ON LT : RT

10.8' TO RT EDGE PAVEMENT

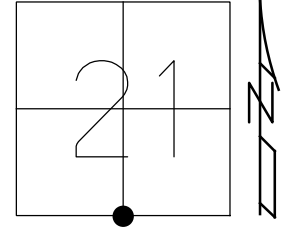
STATION: 452+45.94

HORZ.DATUM: NAD83 2011

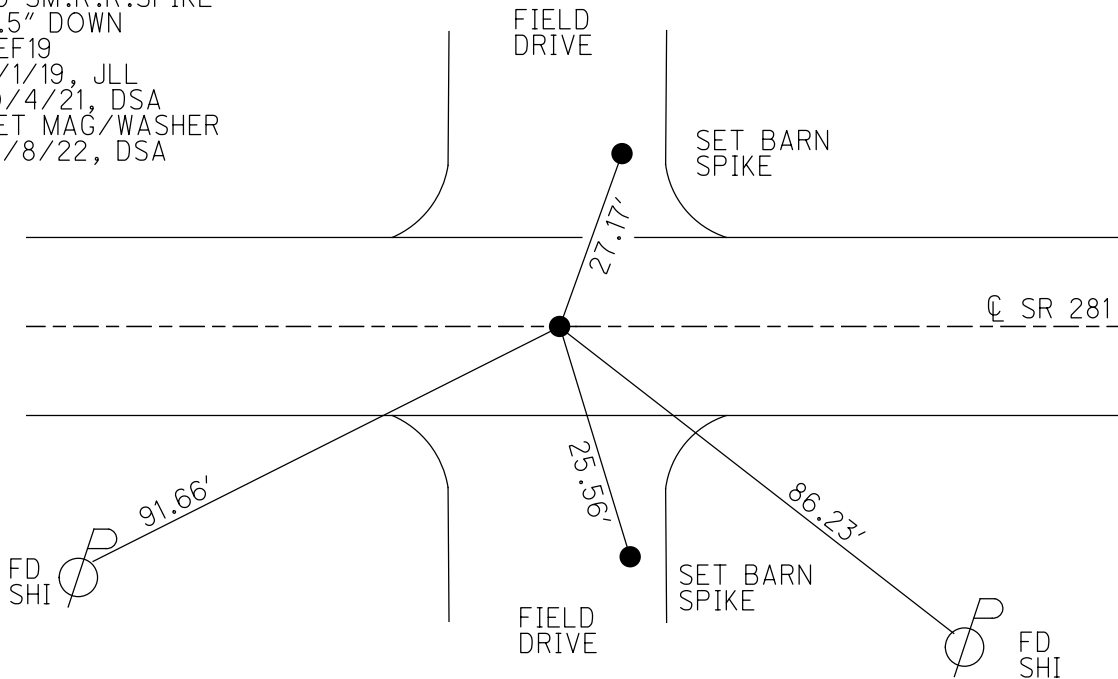
GEOID: NAVD88 2018

GRID: NORTHING: 591545.239

EASTING: 1633758.535



RECORD:  
 SET SM.R.R.SPIKE  
 10/3/88  
 FD SM.R.R.SPIKE  
 5/7/04, RGN  
 SET MAG/WASHER  
 8/2/04, MC  
 FD SM.R.R.SPIKE  
 3.5" DOWN  
 REF19  
 7/1/19, JLL  
 10/4/21, DSA  
 SET MAG/WASHER  
 12/8/22, DSA



O.D.O.T. DISTRICT 2 SURVEY OFFICE (USE ONLY)

PERSONNEL

REFERENCE NO. 19

SHEET 8 OF 25

NOTES NUHFER

DATE 5-7-04

ROUTE S.R. 281

H.C. ARMS

WEATHER PT. CLOUDY

COUNTY WOOD

R.C. HOOKE

TEMP. +55°

TOWNSHIP LIBERTY

SECTION 21

T 4 N R 10 E

TYPE MONUMENT SM. R.R. SPIKE

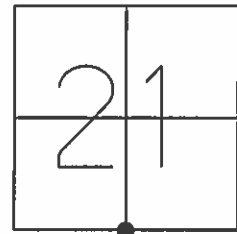
ON SURFACE - ~~BELOW~~ YES

~~RIGHT~~ - Q PAV'T ~~RIGHT~~ YES

10.8' TO RT. EDGE PAVEMENT

S.L.M. 453+06

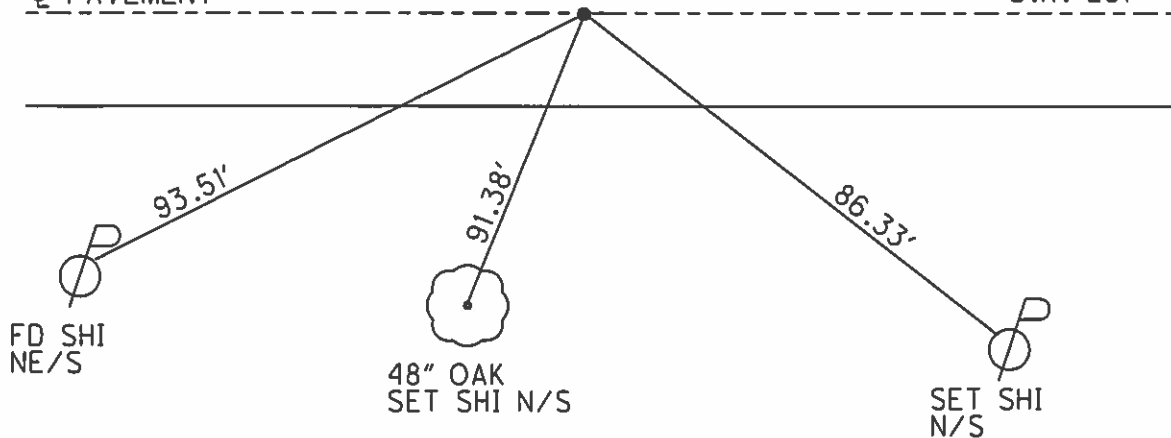
Grid: Northing: \_\_\_\_\_ Easting: \_\_\_\_\_



RESET MAG/WASHER  
8-02-04  
M.C.

SET SM. R.R. SPIKE  
10-3-88

Q PAVEMENT S.R. 281



# O.D.O.T. DISTRICT 2 SURVEY OFFICE

PERSONNEL

REFERENCE NO. 19

SHEET      OF     

NOTES BARNHISEL

H.C. Loehrke

R.C. Reed

HOFFMAN

DATE 8-24-88

WEATHER SUNNY

TEMP. +75°

ROUTE S.E. 281

COUNTY Wood

TOWNSHIP Liberty

SECTION 21

T 4 N R 10 E

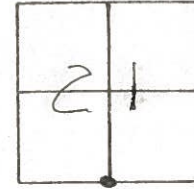
TYPE MONUMENT Sm RR Spk

ON SURFACE - ~~BELOW~~ yes

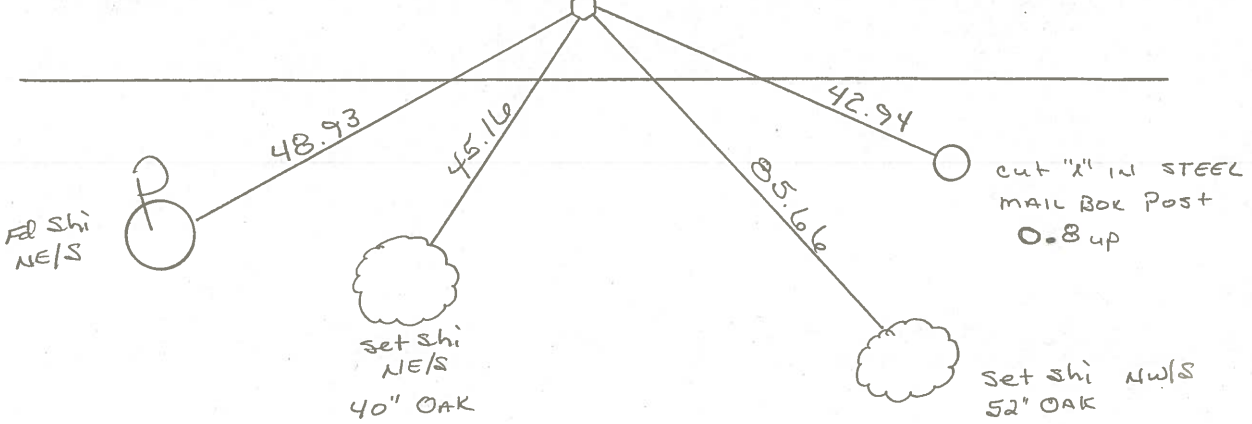
LEFT - ~~C~~ PAV'T. - RIGHT 0.5

9.8 TO R+ EDGE PAVEMENT

S.L.M. 453+06



Set Sm RR Spk  
 10-3-88  
 Y.L.S.



County WOOD S.R. 281

Date 5-1-79

Township LIBERTY

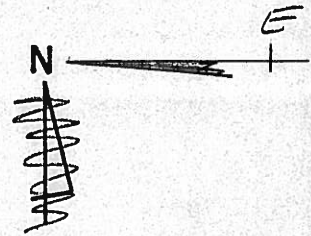
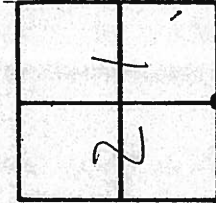
Weather CLEAR

Section 5 1/4 Post SEC. 21

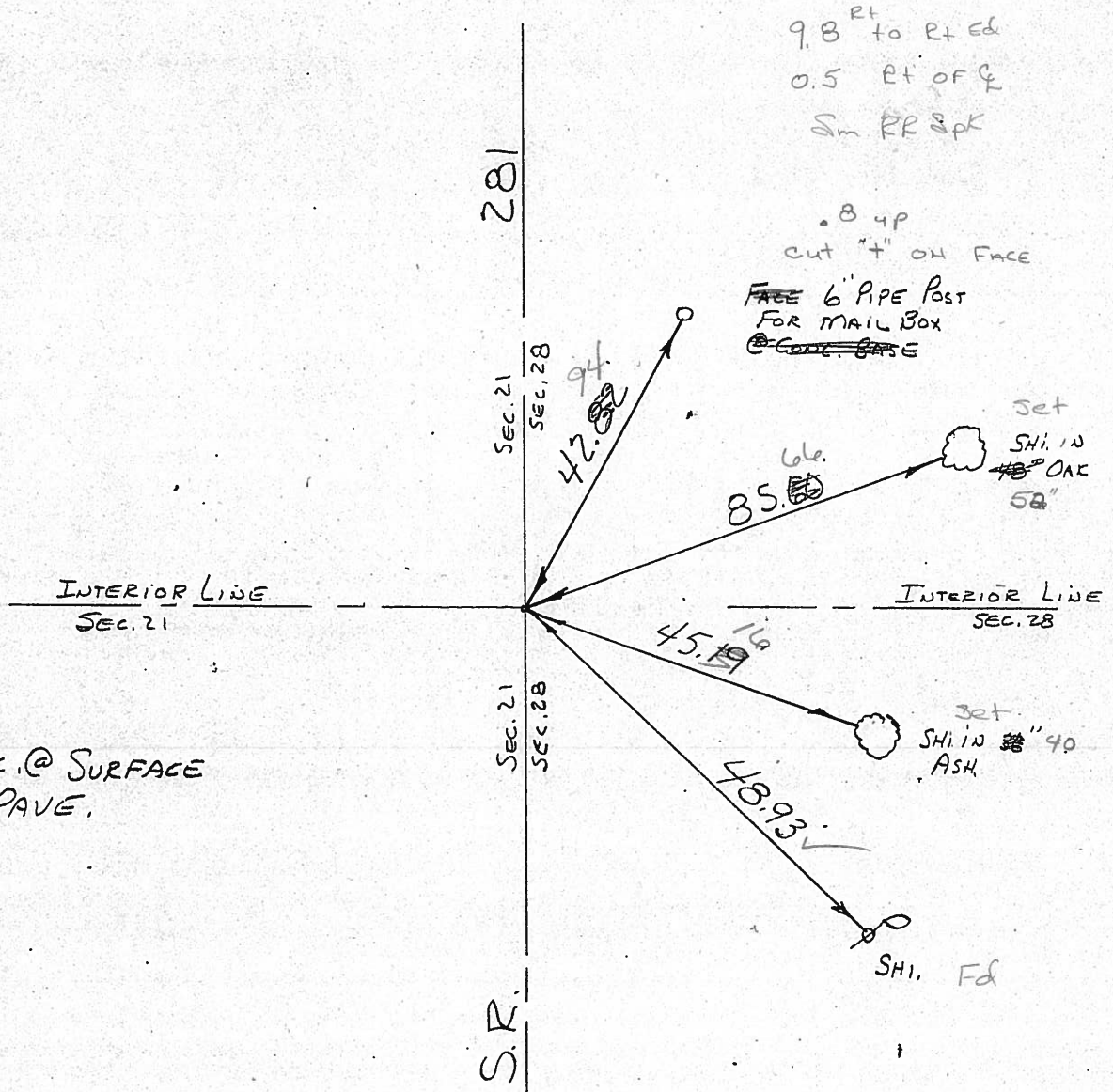
Temp. +55°

T4N, R10E

Personnel BURNSIDE  
SMITH  
BOWERS  
KNAPE  
MEAD



# 19



9.8 ft to Rt Ed  
0.5 ft of E  
Sm RR Spk

.8 4p  
cut "t" ON FACE

FACE 6" PIPE Post  
FOR MAIL BOX  
~~@ CORNER~~

Set  
SHI IN  
18" OAK  
50"

INTERIOR LINE  
SEC. 28

Set  
SHI IN 40"  
ASH

SHI. Ed

Fd. BOAT SPK. @ SURFACE  
in CTR. PAVE.

PERSONNEL	TITLE	PERSONNEL	TITLE

COUNTY Wood DATE OK-8-6-69

S. R. #281 WEATHER \_\_\_\_\_

SEC. 20 & 21 TEMP. \_\_\_\_\_

DESCRIPTION \_\_\_\_\_ LEFT \_\_\_\_\_ CENTER LINE \_\_\_\_\_ RIGHT \_\_\_\_\_ JOB NO. \_\_\_\_\_

DESCRIPTION	LEFT	CENTER LINE	RIGHT	JOB NO.
STA. 132+91.8 S. 1/4 Post SEC. 21 LIBERTY TWP. $\Delta = 0^{\circ}-01' LT.$ "STONE" SET BOAT Spk.  #160		#19	SHINER IN 30' ASH S. 45.48 SHINER IN P. & T. POLE S.W. 48.98 SHINER IN 30' ASH S. 92.07 CONC. MON. S.W. 41.67 4" MAIL BOX PIPE Post. E.S.E. 42.89 N.E. COR. S.W. HOWL. 24.38 N.W. COR. S.E. HOWL. 30.90	
STA. 106+32.75 S.E. COR. SEC. 20 LIBERTY TWP. $\Delta = 1^{\circ}-04' RT.$ BOAT SPIKE  WINGSTON ROAD  #159		#18	R.R. Spk. IN BRACE POLE S.E. 49.70 SHINER IN P. POLE S.W. 43.50 N.W. COR. STONE HOWL. S.W. 31.05 S.E. COR. STONE HOWL. N.W. 25.18 SHINER BRACE POLE N.W. 49.71	

PERSONNEL TITLE PERSONNEL TITLE

COUNTY Wood

DATE OK 12-4-57

S. R. #281

7-22-59 M  
WEATHER 11-3-60 W.  
Silvester 2-29-64

SEC.

TEMP.

DESCRIPTION

LEFT

CENTER LINE

RIGHT

JOB NO.

Sta. 53+1.7			Shiner in cor. post	N.E.	41.4
S.E. cor. sec. 19 Liberty			Shiner in P.P.	S.E.	47.8
Twp. - stone - iron pin			S.W. cor. stone Hdwl.		30.7
$\Delta = 1^{\circ} - 07' Lt.$			N.W. cor. stone Hdwl.		33.21' 33.1
Potter Rd.		P.K. & shiner	S.W. cor. stone Hdwl.	S.E.	42.4
(16) #157			S.E. cor. stone Hdwl.	S.S.W.	35.6
			s.w. shiner in T. Pole		73.9
Sta. 77+64.9			Shiner in cor. post	N.N.E.	31.3
S. 1/4 post sec. 20 Liberty			Shiner in Br. post	N. 30.46	30.5
Twp.			Shiner in Cor. post	S. 41.25	41.3
$\Delta = 0^{\circ} - 1' Rt.$			Conc. mon.	N.W. 40.00	39.5
P.R. spk.		P.K. & shiner	Conc. man. brace off	S.W. 43.74	44.0
(17) #158			f. 1/2" over		To. Ct.
			Shiner in 18" oak	N.E.	87.62
Fd. 3/4" Rod					49.6
Sta. 106+32.7			P.R. spk. in brace pole	N.W.	49.1
S.E. cor. sec. 20 Liberty			Shiner in P.P.	S.	43.59 43.1
Twp. Gasp. on top			N.W. cor. stone Hdwl.	S.W.	31.0
$\Delta = 1^{\circ} - 04' Lt.$		P.K. & shiner	S. cor. stone Hdwl.	N.W. 25.05	24.8
Wingston Rd.			Shiner in brace pole	N.W.	49.3
(18) #159					49.14
Fd. 3/4" Iron Rod			New		45.6
Sta. 132+91.8			Shiner in 18" Ash	S.	46.0
S. 1/4 post sec. 21 Liberty			Shiner in P&T pole	S.W.	49.16
Twp. Stone		P.K. & shiner	<del>Shiner in 30" oak</del>	S.E.	<del>86.10</del>
$\Delta = 0^{\circ} - 01' Lt.$			Shiner in 18" ash	S. 7.51	73.5
			Conc. mon.	S.W. 41.7	41.8
(19) #160			N.W. COR. Conc. blk Fnd.	S.E. 6" above	84.5
			N.E. COR. S.W. Hdwl.		24.38'
			N.W. cor. S.E. "		30.90'