

O.D.O.T. DISTRICT 2 SURVEY OFFICE (USE ONLY)

PERSONNEL _____

REFERENCE NO. 20

SHEET 9 OF 36

NOTES NIESE

DATE 10/4/21

ROUTE SR 281

H.C. AUBLE

WEATHER OVERCAST

COUNTY WOOD

R.C. NIESE

TEMP. 65°

TOWNSHIP LIBERTY

SECTION 21

DWG BY RHOADES

PID 94340

T 4 N R 10 E

TYPE MONUMENT MAG/WASHER

ON SURFACE - ~~BELOW~~ ON

OFFSET ☉ PAVEMENT ON LT : RT

- TO - EDGE PAVEMENT

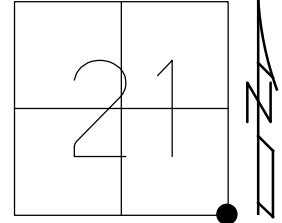
STATION: 478+87.41

HORZ.DATUM: NAD83 2011

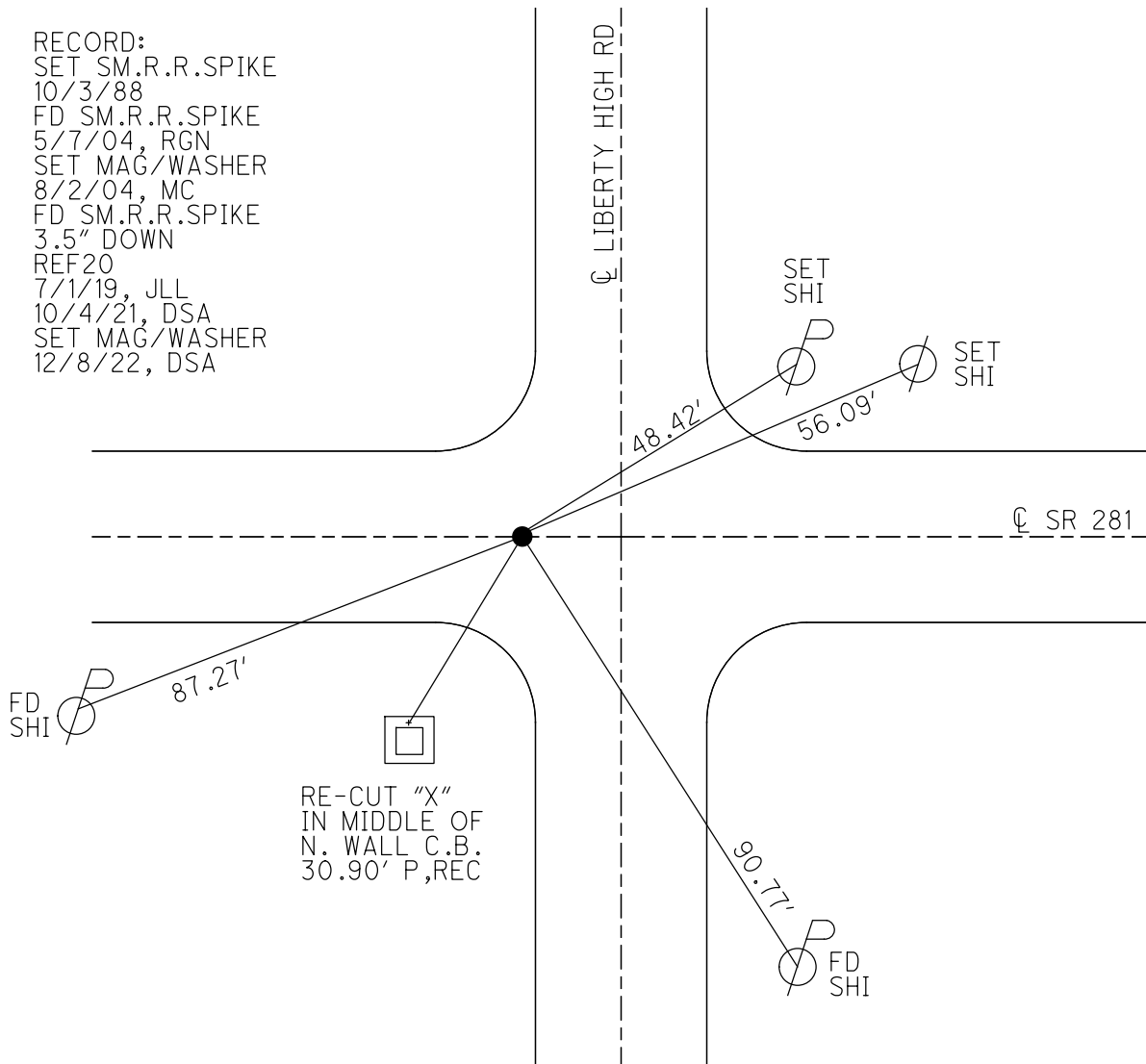
GEOID: NAVD88 2018

GRID: NORTHING: 591428.881

EASTING: 1636397.443



RECORD:
 SET SM.R.R.SPIKE
 10/3/88
 FD SM.R.R.SPIKE
 5/7/04, RGN
 SET MAG/WASHER
 8/2/04, MC
 FD SM.R.R.SPIKE
 3.5" DOWN
 REF20
 7/1/19, JLL
 10/4/21, DSA
 SET MAG/WASHER
 12/8/22, DSA



O.D.O.T. DISTRICT 2 SURVEY OFFICE (USE ONLY)

PERSONNEL

REFERENCE NO. 20

SHEET 9 OF 25

NOTES NUHFER

DATE 5-7-04

ROUTE S.R. 281

H.C. ARMS

WEATHER CLOUDY/RAIN

COUNTY WOOD

R.C. HOOKE

TEMP. +55°

TOWNSHIP LIBERTY

SECTION 21

T 4 N R 10 E

TYPE MONUMENT SM. R.R. SPIKE

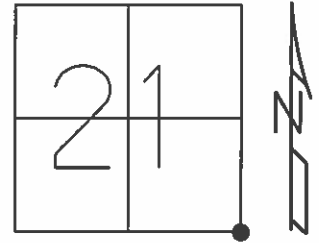
ON SURFACE - ~~BELOW~~ YES

~~TO~~ - Q PAV'T ~~RIGHT~~ YES

- TO - EDGE PAVEMENT 17' WEST OF Q LIBERTY HI RD TO THE SOUTH

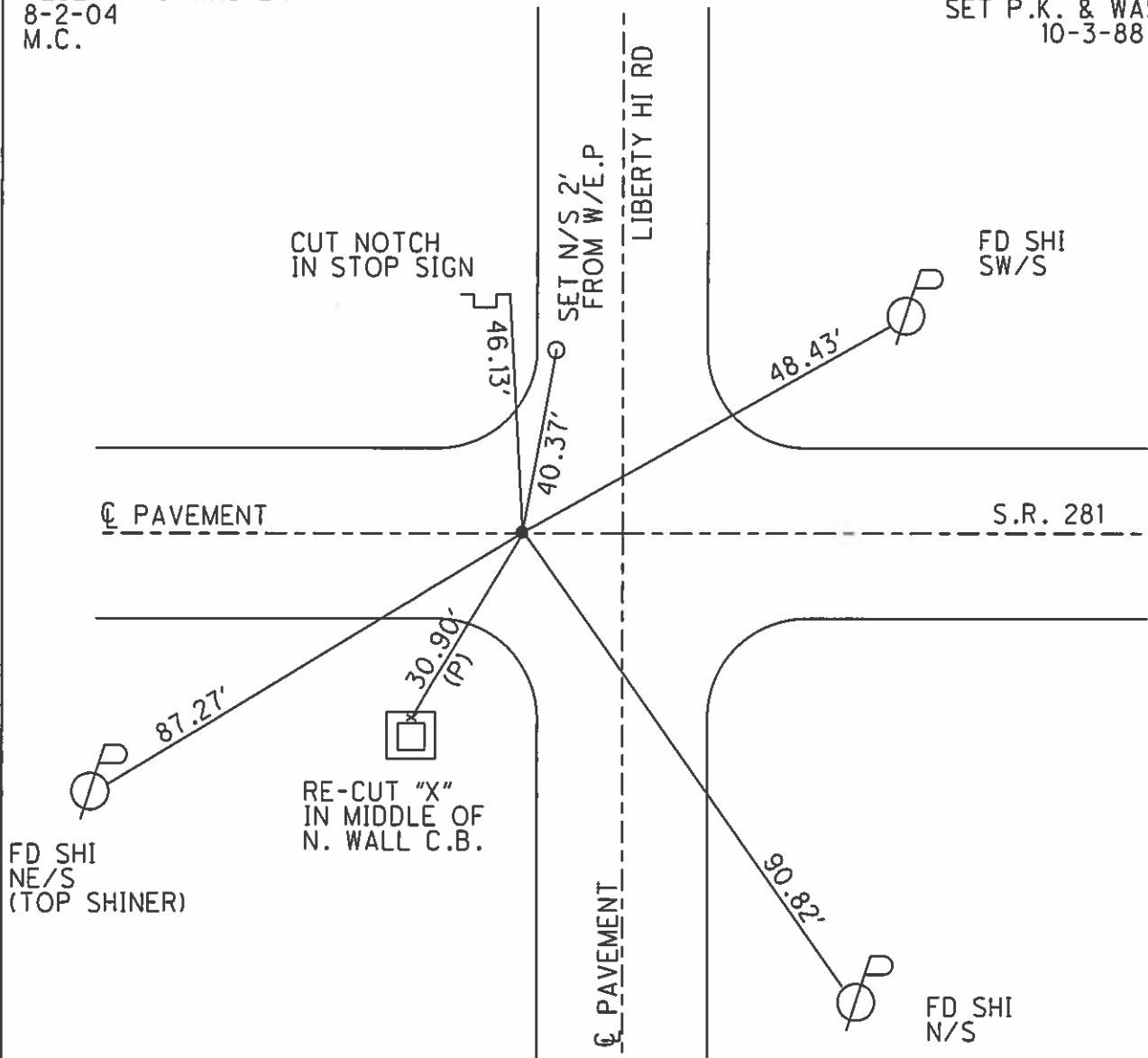
S.L.M. 479+49

Grid: Northing: _____ Easting: _____



RESET MAG/WASHER
8-2-04
M.C.

SET P.K. & WASHER
10-3-88



O.D.O.T. DISTRICT 2 SURVEY OFFICE

PERSONNEL _____

REFERENCE NO. 20

SHEET _____ OF _____

NOTES BARNHISEL

H.C. Lochete

R.C. Reed

HOFFMAN

DATE 8-24-88

WEATHER Sunny

TEMP. +80°

ROUTE S.P. 281

COUNTY Wood

TOWNSHIP Liberty

SECTION 21

T 4 N R 10 E

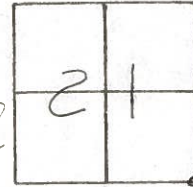
TYPE MONUMENT Sm RR Spk

ON SURFACE - BELOW yes

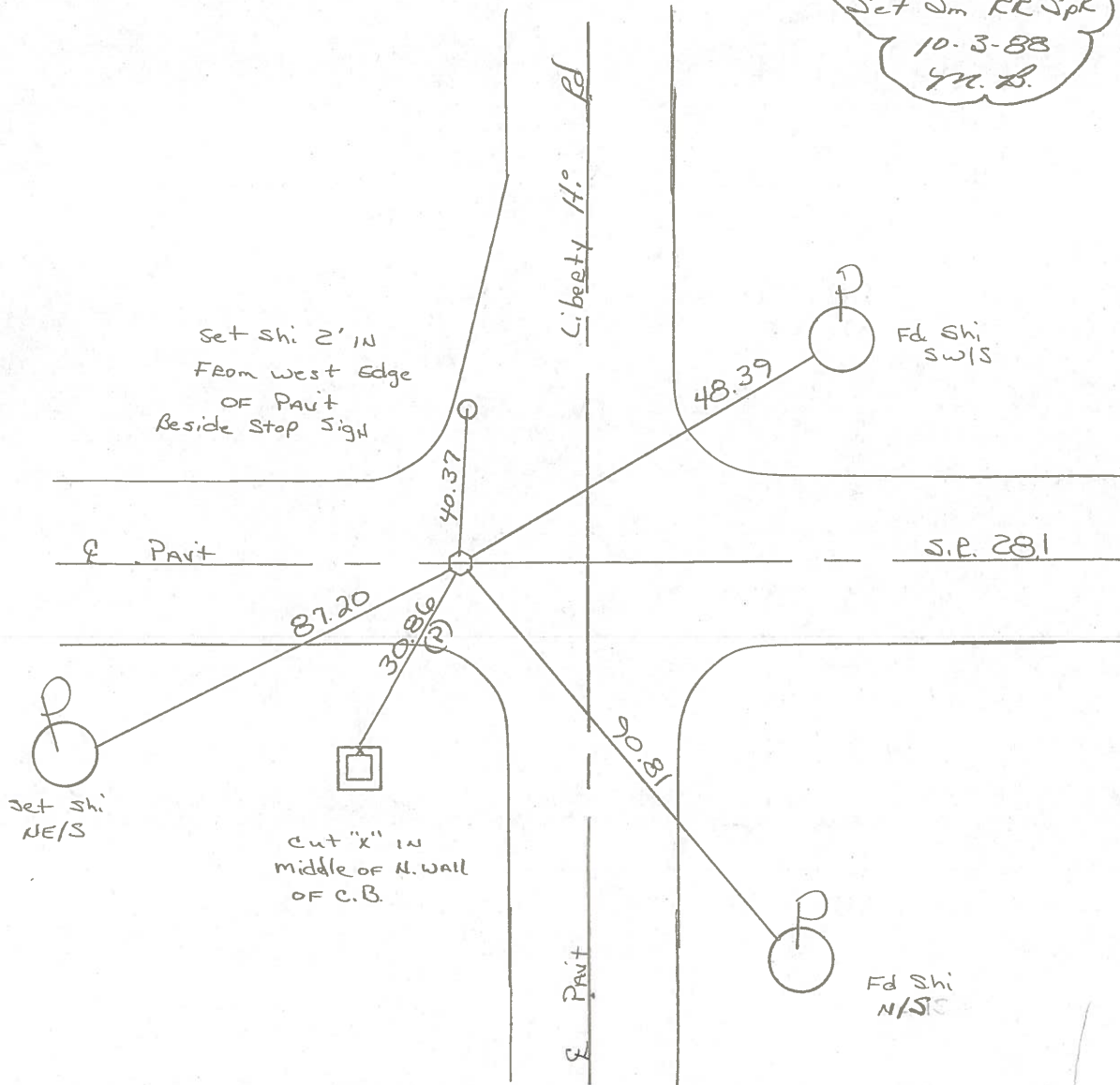
LEFT - & PAV'T. - RIGHT yes

- TO - EDGE PAVEMENT 17' west of E Liberty Hi Rd to the South

S.L.M. 479+49



Set Sm RR Spk
10-3-88
Y.N.B.



County WOOD S.R. 281

Date 5-1-79

Township LIBERTY

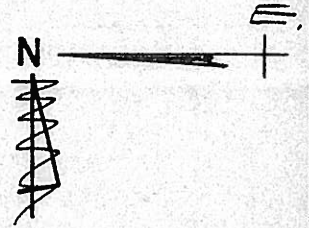
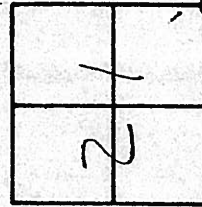
Weather CLEAR

Section S.E. COR. SEC. 21

Temp. +56°

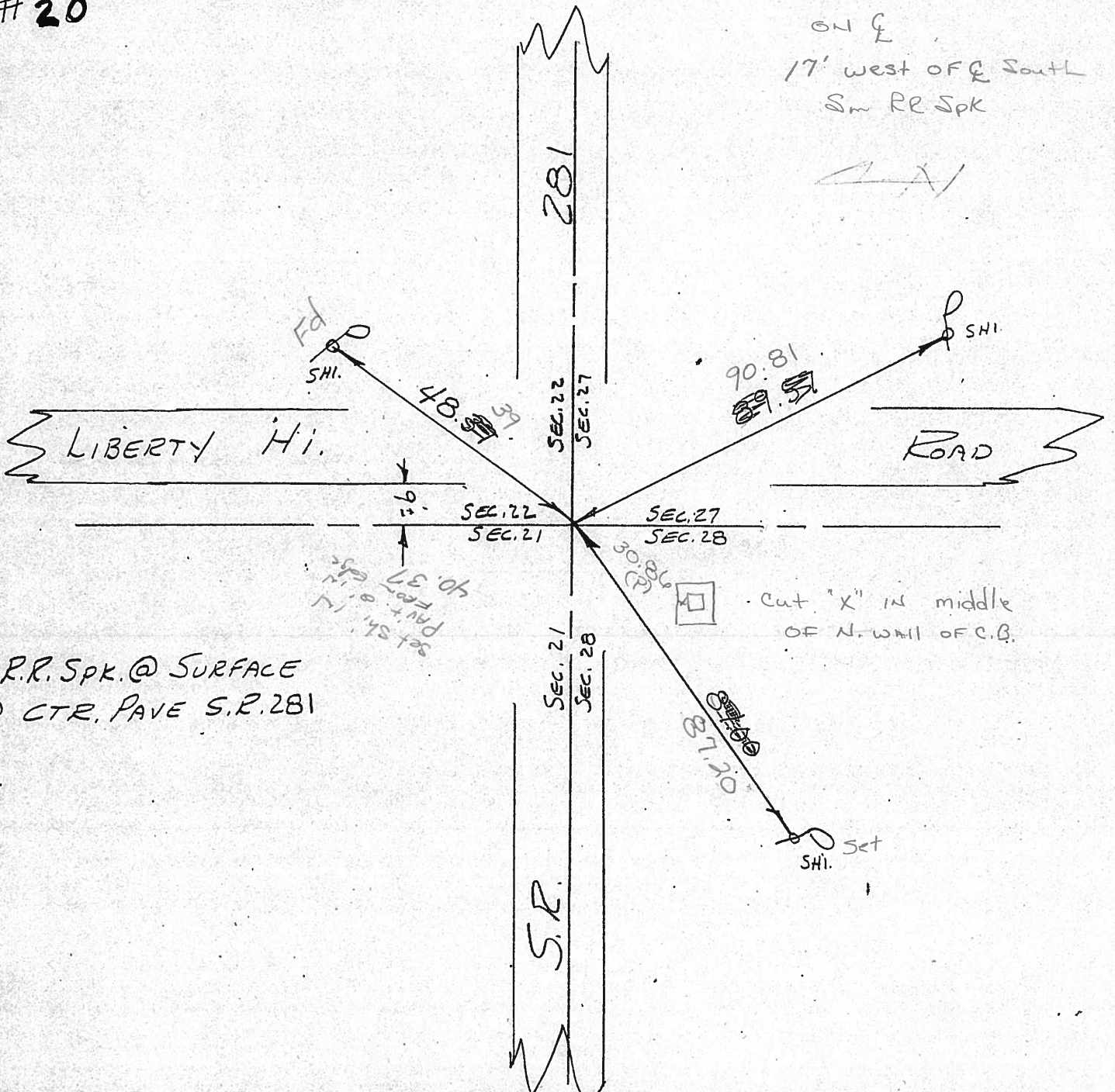
T4N, R10E

Personnel BURNSIDE
SMITH
BOWERS
ENAPE
MEAD



#20

479+49
ON E
17' west of E South
Sm RR Spk



FD. R.R. Spk. @ SURFACE
IN CTR. PAVE S.R. 281

cut "X" in middle
OF N. wall OF C.B.

RE-COPIED
1-26-71

PERSONNEL TITLE PERSONNEL TITLE COUNTY WOOD DATE OK-8-6-69
 S. R. #281 WEATHER
 SEC. 21 & 22 TEMP.

DESCRIPTION CONTROL TIES JOB NO.

LEFT	CENTER LINE	RIGHT
STA. 185+79.6 S. 1/4 Post SEC. 22 LIBERTY Twp. "STONE" - SET BOAT SPK. Δ = 0°-45' LT. #162	#21 9" ABOVE GROUND {	SHINER IN P. POLE S. 29.08' SHI. IN 18' BOX ELDER N.E. 60.61' SHI. IN 28' BOX ELDER N. 55.56' S.E. COR. STONE Post. N.N.W. 25.30 S.W. COR. STONE Post N.W. 34.64
STA. 159+34.3 S.E. COR. SEC. 21 LIBERTY Twp. Δ = 0°-07' LT. "STONE" SET BOAT SPK. LIBERTY Hi. ROAD #161	#20	SHINER IN P. POLE S.W. 83.93' SHINER IN P. POLE N.E. 48.36' SHINER IN P. POLE S.S.E. 89.58' SHINER IN T. POLE N.N.E. 58.65' SHINER IN T. POLE S.E. 45.90'

PERSONNEL	TITLE	PERSONNEL	TITLE

COUNTY Wood DATE OK 12-4-57
 S. R. #281 WEATHER 7-22-59
11-3-60
 W.F.K.
 SEC. _____ SILVESTER TEMP. 2-28-64

DESCRIPTION	LEFT	CENTER LINE	RIGHT	JOB NO.
Fd. 1" Iron Bolt			Shiner in P. Pole	S.W. 84.01'
Sta. 159+34.3			Shiner in 18" Elm	S.S.W. 80.20
S.E. cor. sec. 21 Liberty			Shiner in 24" Elm	N.N.W. 55.62'
Twp. Stone	P.K. & shiner		Shiner in P.P.	N.E. 47.08 47.02
Δ = 0°-07' Lt.			Shiner in P.P.	S.S.E. 89.67'
Liberty Hi. Road				.63
(20)	#161			
Fd. 3/4" Iron Rod			Shiner in P.P.	S. 29.15
Sta. 185+79.6			Shiner in 18" Box Elder	N.E. 60.52 60.35 59.95
S. 1/4 post sec. 22 Liberty			Shiner in 18" Box Elder	N. 55.62'
Twp. Stone	P.K. Nail		(S.E. cor. stone post N.N.W.)	25.30 25.38
Δ = 0°-45' Lt.			(S.W. cor. stone post N.W.)	34.64'
		9' above ground	P.P. spt. E. side 30" Elm	5' stump 71.47'
(21)	#162			42. 72.66'
Fd. 3/4" Head (boat spt)			Shiner in P. Pole	N.N.W. 74.91
Sta. 212+27			Shiner in T.P.	N.E. 75.22
S.W. cor. sec. 23			Shiner in P.P.	N.W. 63.79
Stone P.P. spt. on top - P.K. & shiner			X S. end top Hdwl E. side	Mitchell Rd N.E. 30.65
No Angle			X S. end top Hdwl W. side	Mitchell Rd N.W. 30.62
Mitchell Rd.				
(22)	#163			
Sta. 239+36.2			Shiner in T.P.	N.E. 55.05
S. 1/4 post sec. 23			Shiner in P.P.	N.W. 46.15
Liberty Twp. Stone Tipin			Shiner in T.P.	S.W. 39.42 39.45
Δ = 0°-11' Pt.	P.K. & shiner		N.E. cor. w. wall	N.W. 45.65
Place Rd.			N.W. cor. E. wall	N.E. 41.00'
(23)	#164			