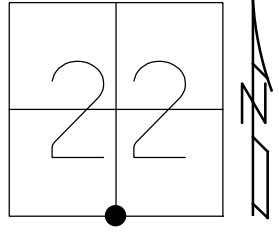


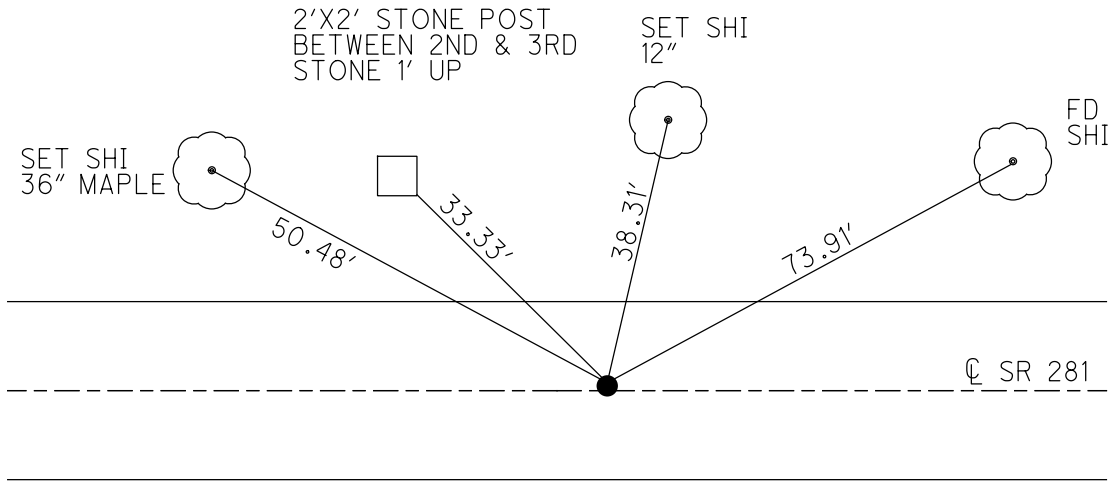
O.D.O.T. DISTRICT 2 SURVEY OFFICE (USE ONLY)

PERSONNEL _____ REFERENCE NO. 21 SHEET 10 OF 36
 NOTES NIESE DATE 10/4/21 ROUTE SR 281
 H.C. AUBLE WEATHER OVERCAST COUNTY WOOD
 R.C. NIESE TEMP. 65° TOWNSHIP LIBERTY
 DWG BY RHOADES PID 94340 SECTION 22
 T 4 N R 10 E

TYPE MONUMENT MAG/WASHER
 ON SURFACE - ~~BELOW~~ ON _____
 OFFSET \odot PAVEMENT 0.6' LT : ~~RT~~
11.4' TO RT EDGE PAVEMENT
 STATION: 505+31.62



HORIZ.DATUM: NAD83 2011 GEOID: NAVD88 2018
 GRID: NORTHING: 591318.309 EASTING: 1639039.333



RECORD:
 SET SM.R.R.SPIKE
 10/3/88
 FD SM.R.R.SPIKE
 5/25/04, RGN
 SET MAG/WASHER
 8/2/04, MC
 FD MAG/WASHER
 REF21
 7/1/19, JLL
 10/4/21, DSA
 SET MAG/WASHER
 12/8/22, DSA

O.D.O.T. DISTRICT 2 SURVEY OFFICE (USE ONLY)

PERSONNEL

REFERENCE NO. 21

SHEET 10 OF 25

NOTES NUHFER

DATE 5-25-04

ROUTE S.R. 281

H.C. ARMS

WEATHER CLOUDY/RAIN

COUNTY WOOD

R.C. HOOKE

TEMP. +65°

TOWNSHIP LIBERTY

SECTION 22

T 4 N R 10 E

TYPE MONUMENT SM. R.R. SPIKE

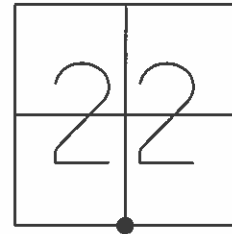
ON SURFACE - ~~BELOW~~ YES

LEFT - ☉ PAV'T ~~RIGHT~~ 0.6'

11.4' TO RT. EDGE PAVEMENT

S.L.M. 505+94

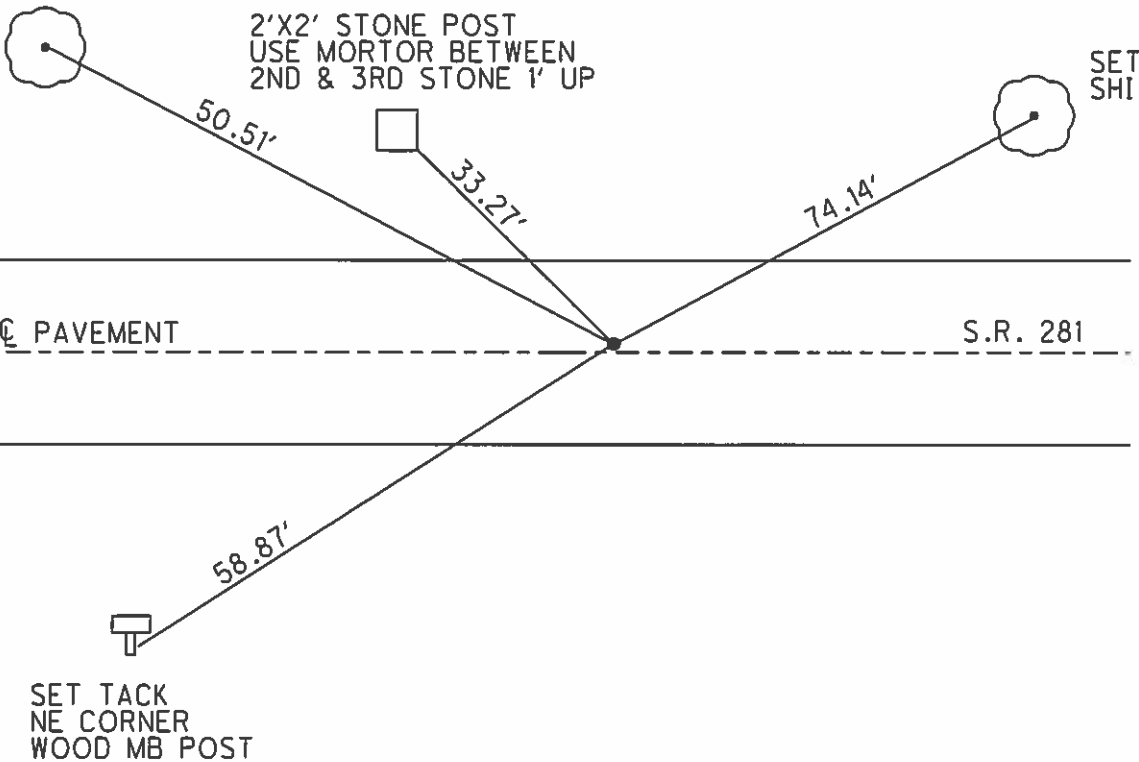
Grid: Northing: _____ Easting: _____



RESET MAG/WASHER
8-2-04
M.C.

SET SM. R.R. SPIKE
10-3-88

36" MAPLE
SET SHI SE/S



O.D.O.T. DISTRICT 2 SURVEY OFFICE

PERSONNEL

REFERENCE NO. 21

SHEET OF

NOTES BAENHISSEL

H.C. Loehake

R.C. Reed

HOFFMAN

DATE 8-24-88

WEATHER Sunny

TEMP. +80°

ROUTE S.E. 281

COUNTY Wood

TOWNSHIP Liberty

SECTION 22

T 4 N R 10 E

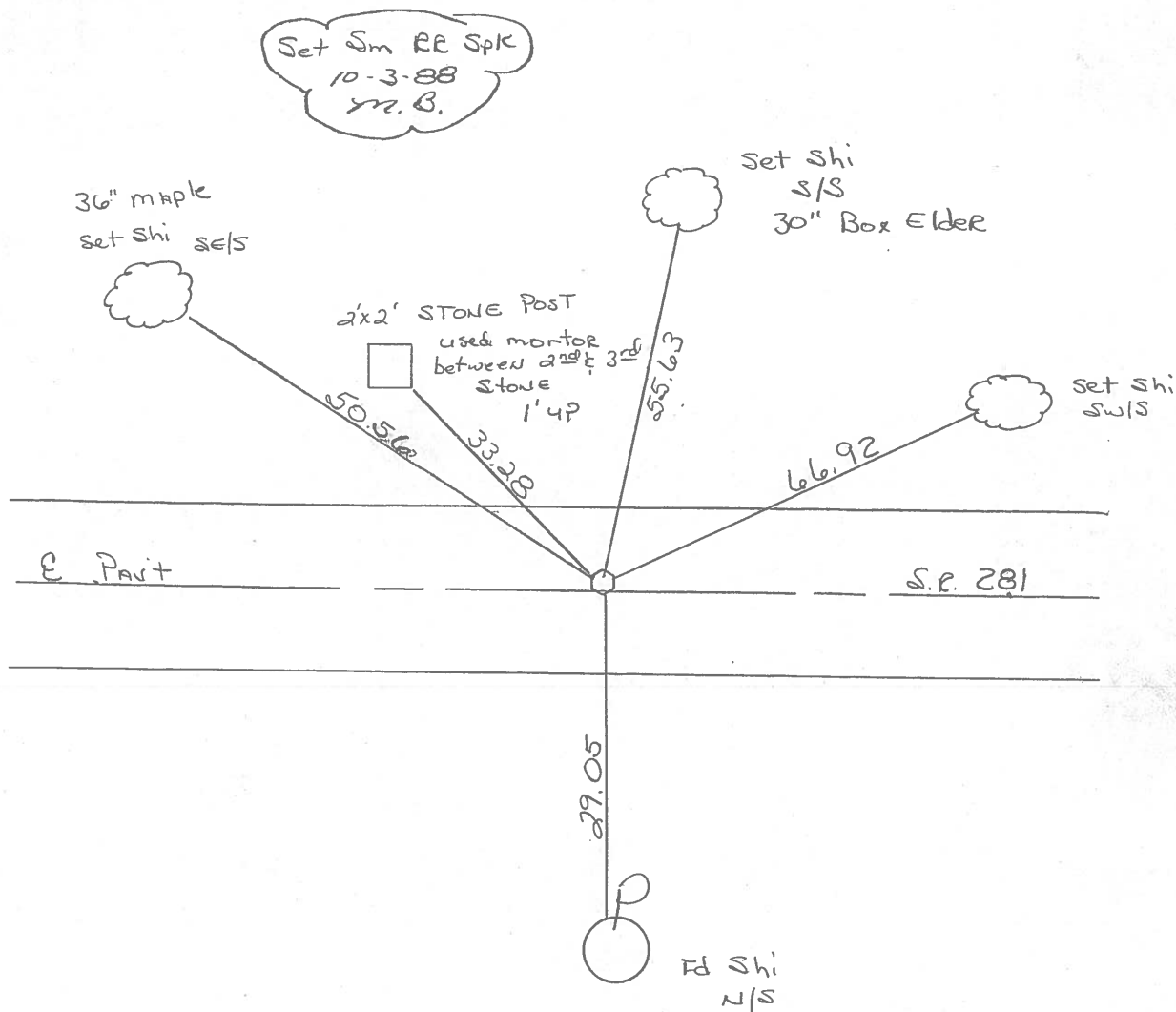
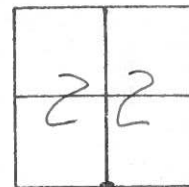
TYPE MONUMENT Sm RE Spk

ON SURFACE - BELOW yes

LEFT- & PAV'T. - RIGHT 0.6

10.1 TO Lt EDGE PAVEMENT

S.L.M. 505+94



County Wood SR 281

Date 5-2-1979

Township Liberty

Weather Clear

Section S 1/4 Post Sec. 22

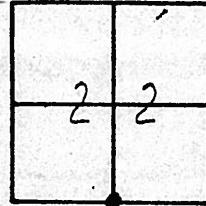
Temp. 55°

T4N, R10E

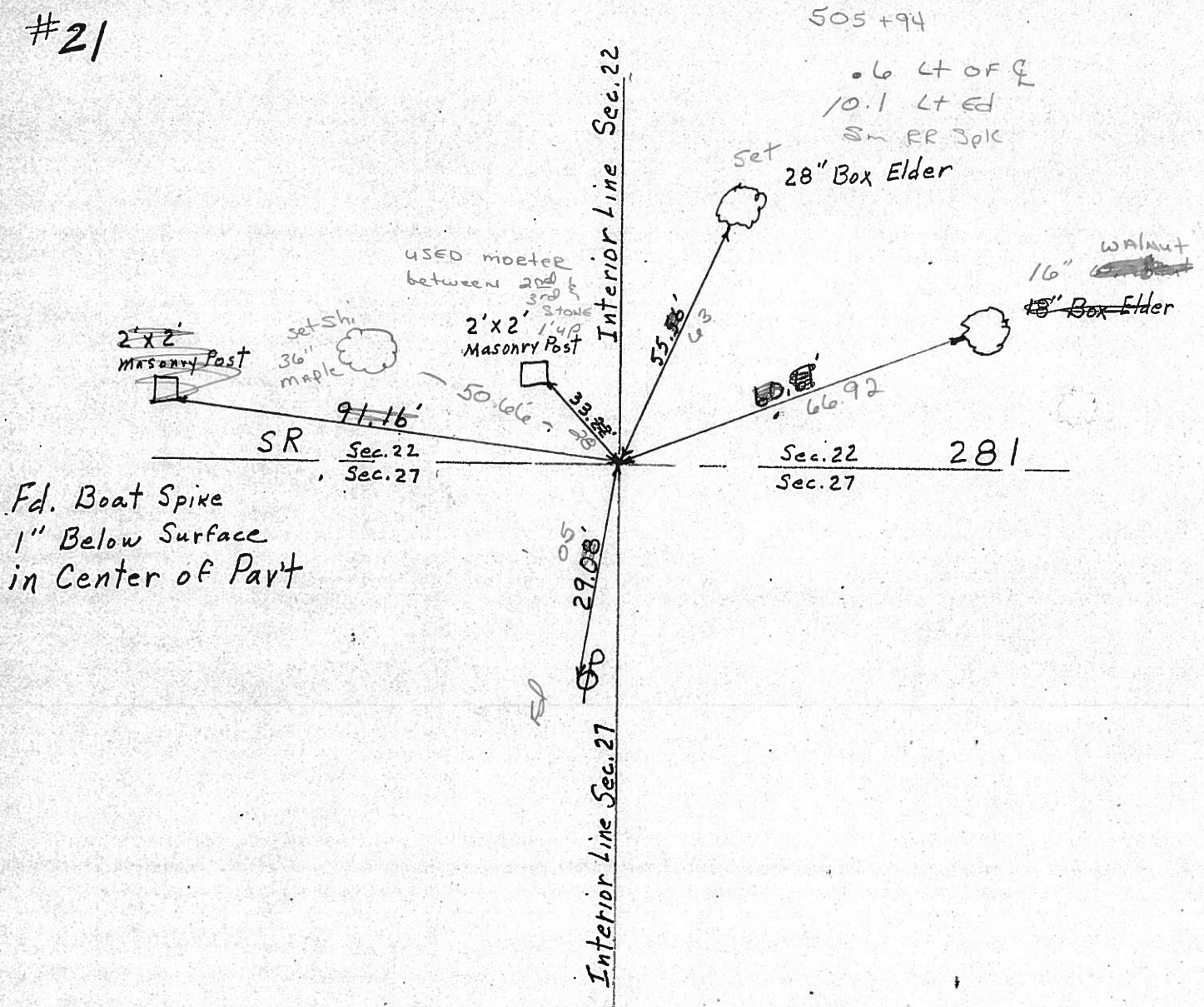
Personnel Smith

Knape

Mead



#21



REF. 1-26-71

PERSONNEL TITLE PERSONNEL TITLE

COUNTY WOOD DATE OK-8-6-69

S. R. #281 WEATHER

SEC. 21 & 22 TEMP.

DESCRIPTION CONTROL TIES JOB NO.

LEFT

CENTER LINE

RIGHT

STA. 185+79.6
S. 1/4 Post SEC. 22
LIBERTY TWP.
"STONE" - SET BOAT SPK.
Δ = 0° - 45' LT.

#21

9" ABOVE GROUND

SHINER IN P. POLE S. 29.08
SHI. IN 18" BOX ELDER N.E. 60.61
SHI. IN 28" BOX ELDER N. 55.56
S.E. COR. STONE Post. N.N.W. 25.30
S.W. COR. STONE Post N.W. 34.64

#162

STA. 159+34.3
S.E. COR. SEC. 21
LIBERTY TWP.
Δ = 0° - 07' LT.
"STONE" SET BOAT SPK.

#20

SHINER IN P. POLE S.W. 83.93
SHINER IN P. POLE N.E. 48.36
SHINER IN P. POLE S.S.E. 89.58
SHINER IN T. POLE N.N.E. 58.65
SHINER IN T. POLE S.E. 45.90

LIBERTY HI. ROAD

#161

PERSONNEL	TITLE	PERSONNEL	TITLE	COUNTY	DATE
				Wood	OK 12-4-57
				S. R. #281	7-22-59
					WEATHER 11-3-60
					W.F.K
				SEC.	Silvester 2-28-64
					TEMP.

DESCRIPTION	LEFT	CENTER LINE	RIGHT	JOB NO.
Fd. 1" Iron Bolt			Shiner in P. Pole	S.W. 84.01
Sta. 159+34.3			Shiner in 18" Elm	S.S.W. 80.2
S.E. cor. sec. 21. Liberty			Shiner in 24" Elm	N.N.W. ^{55.62} 55.70
Twp. Stone, P.K. & shiner			Shiner in P.P.	N.E. 47.00 47.0
Δ = 0°-07' Lt.			Shiner in P.P.	S.S.E. 89.6
Liberty Hi. Road				.6:
(20)	#161			
Fd. 3/4" Iron Rod			Shiner in P.P.	S. 29.15
Sta. 185+79.6			Shiner in 18" Box Elder	^{60.35} N.E. 59.95
S 1/4 post sec. 22. Liberty			^{NEW} Shiner in 18" Box Elder	N. 55.67
Twp. Stone, P.K. Nail			S.E. cor. stone post	N.N.W. ^{25.30} 25.3
Δ = 0°-45' Lt.			S.W. cor. Stone post	N.W. 84.6
		9" above ground	P.P. spk. E. side 30" Elm	^{stump} S.W. 71.4
				42
				72.60
(21)	#162			
Fd. 3/4" Head (boat spk)			Shiner in P. Pole	N.N.W. 74.91
Sta. 212+27			Shiner in T.P.	N.E. 75.2
S.W. cor. sec. 23.			Shiner in P.P.	N.W. 63.7
Stone P.P. spk. on top - P.K. & shiner			X S. end top Hdwl E. side	
No Angle			Mitchell Rd N.E.	30.6
Mitchell Rd.			X S. end top Hdwl. W. side	
			Mitchell Rd. N.W.	30.6
(22)	#163			
Sta. 239+36.2			Shiner in T.P.	N.E. 55.0
S 1/4 post sec. 23.			Shiner in P.P.	N.W. 46.1
Liberty Twp. Stone, Tipin			Shiner in T.P.	S.W. 39.42 39.4
Δ = 0°-11' Rt.			N.E. cor. w. wall	N.W. 45.6
Place Rd.		P.K. & shiner	N.W. cor. E. wall	N.E. 41.0
(23)	#164			