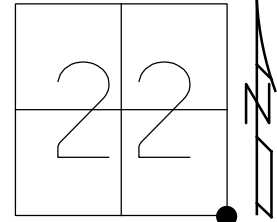


O.D.O.T. DISTRICT 2 SURVEY OFFICE (USE ONLY)

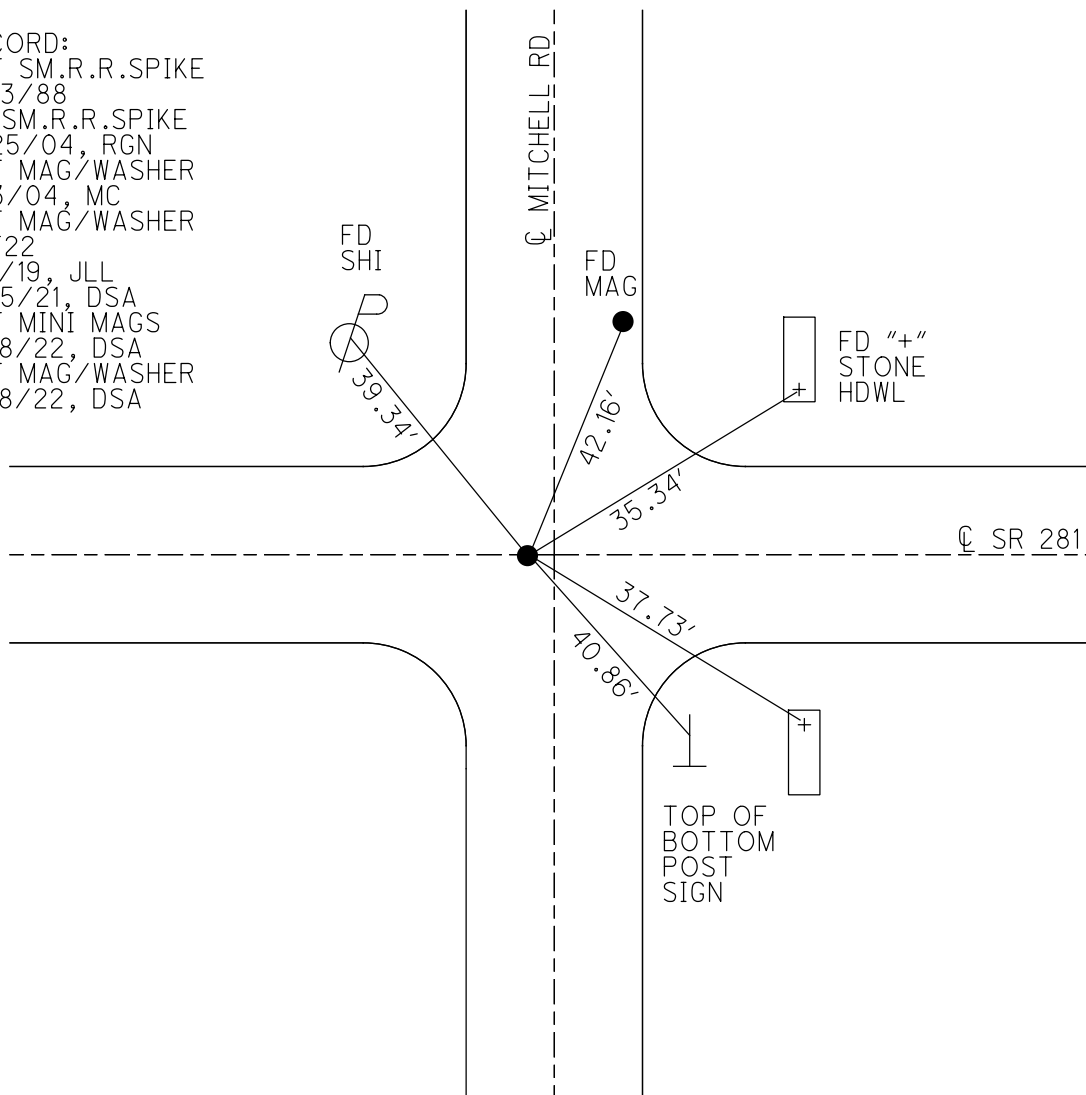
PERSONNEL _____ REFERENCE NO. 22 SHEET 11 OF 36
 NOTES NIESE DATE 10/4/21 ROUTE SR 281
 H.C. AUBLE WEATHER OVERCAST COUNTY WOOD
 R.C. NIESE TEMP. 66° TOWNSHIP LIBERTY
 DWG BY RHOADES PID 94340 SECTION 22
 T 4 N R 10 E

TYPE MONUMENT MAG/WASHER
 ON SURFACE - ~~BELOW~~ ON _____
 OFFSET ☐ PAVEMENT 0.5' LT : RT
11.5' TO RT EDGE PAVEMENT
 STATION: 531+77.77



HORZ.DATUM: NAD83 2011 GEOID: NAVD88 2018
 GRID: NORTHING: 591242.924 EASTING: 1641684.409

RECORD:
 SET SM.R.R.SPIKE
 10/3/88
 FD SM.R.R.SPIKE
 5/25/04, RGN
 SET MAG/WASHER
 8/3/04, MC
 SET MAG/WASHER
 REF22
 7/1/19, JLL
 10/5/21, DSA
 SET MINI MAGS
 8/18/22, DSA
 SET MAG/WASHER
 12/8/22, DSA



O.D.O.T. DISTRICT 2 SURVEY OFFICE (USE ONLY)

PERSONNEL

REFERENCE NO. 22

SHEET 11 OF 25

NOTES NUHFER

DATE 5-25-04

ROUTE S.R. 281

H.C. HOMAN

WEATHER RAIN

COUNTY WOOD

R.C. ADKINS

TEMP. +65°

TOWNSHIP LIBERTY

SECTION 22

T 4 N R 10 E

TYPE MONUMENT SM. R.R. SPIKE

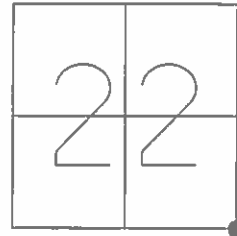
ON SURFACE - ~~BELOW~~ YES

LEFT - ☉ PAV'T ~~RIGHT~~ 0.5'

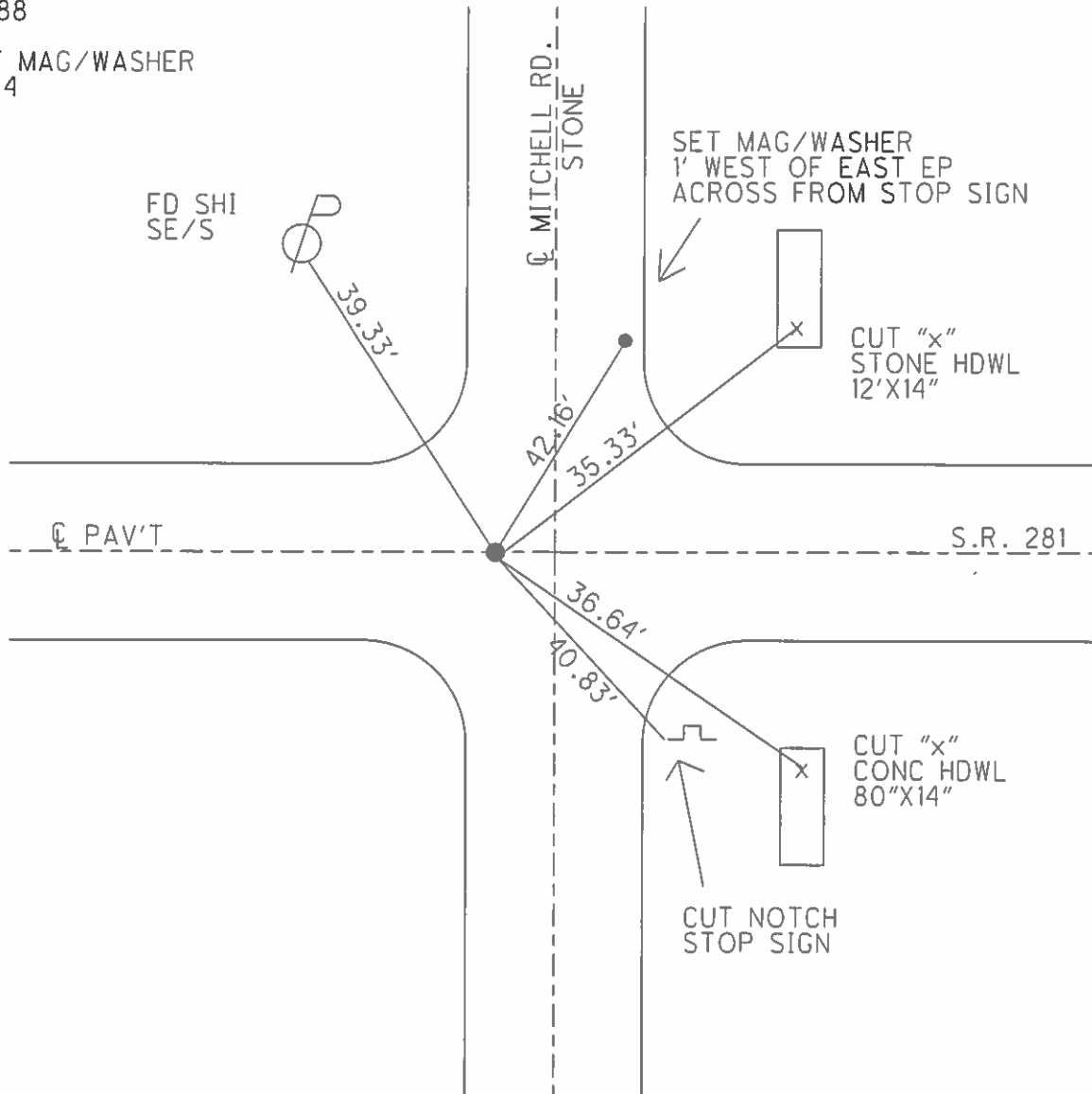
11.5' TO RT. EDGE PAVEMENT

S.L.M. 532+40

Grid: Northing: _____ Easting: _____



SET SM RR SPK
10-3-88
M.B.
RESET MAG/WASHER
8-3-04
M.C.



O.D.O.T. DISTRICT 2 SURVEY OFFICE

PERSONNEL

REFERENCE NO. 22

SHEET OF

NOTES BARNHISEL

H.C. Loehke

R.C. Reed

HOFFMAN

DATE 8-24-88

WEATHER SUNNY

TEMP. +80°

ROUTE S.R. 281

COUNTY Wood

TOWNSHIP Liberty

SECTION 22

T 4 N R 10 E

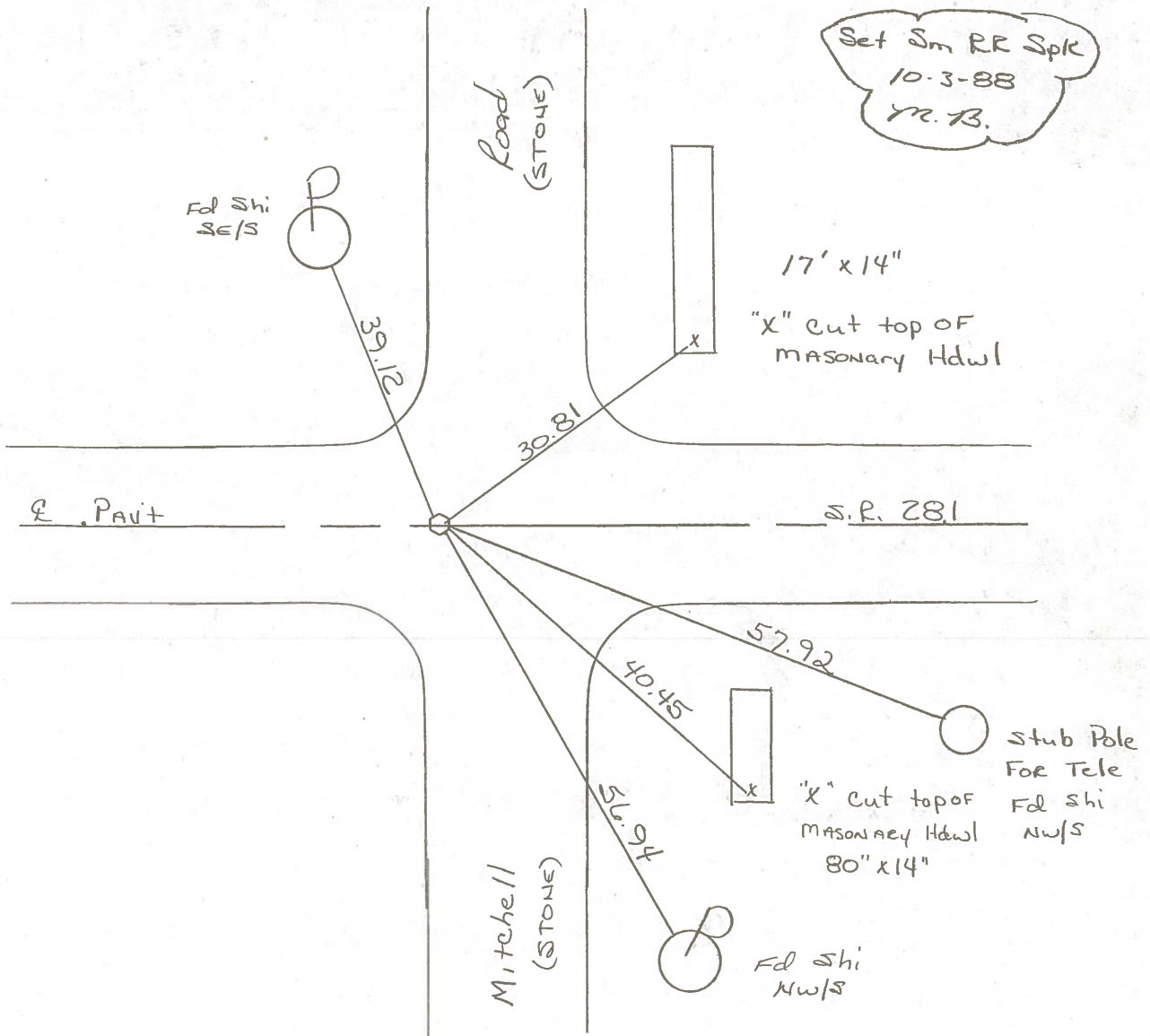
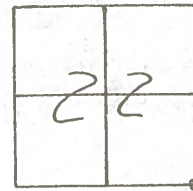
TYPE MONUMENT Sm RR Spk

ON SURFACE - BELOW yes

LEFT - ℄ PAV'T. - RIGHT yes

10.1 TO Rt EDGE PAVEMENT

S.L.M. 532740



OD.O.T. DISTRICT 2 SURVEY OFFICE

Sht. 11 of

County Wood SR 281

Date 5-2-1979

Township Liberty

Weather Clear

Section SE Corner Sec. 22

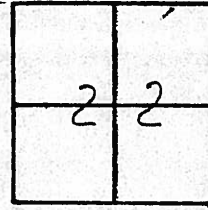
Temp. 55°

T4N, R10E

Personnel Smith

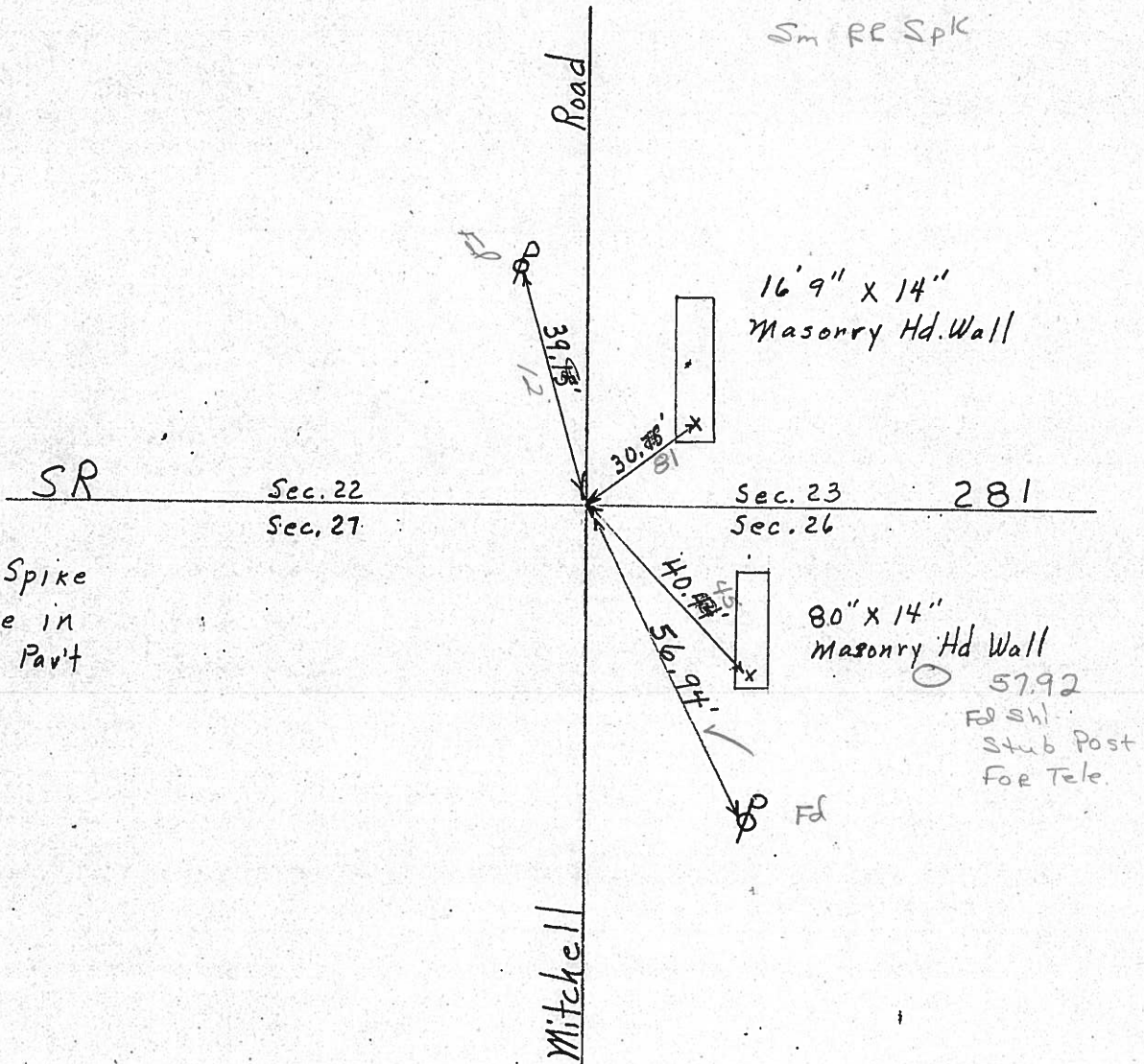
Knape

Mead



#22

532.40
ON E
10.1 Rt Ed
Sm RR Spk



Fd. Boat Spike
@ Surface in
Center of Pav't

80" x 14"
Masonry Hd Wall
57.92
Fd sh.
Stub Post
for Tele.

SHEET NO. 12

PERSONNEL TITLE PERSONNEL TITLE PERSONNEL TITLE PERSONNEL TITLE

COUNTY WOOD DATE OK-8-6-69

S. R. #281 WEATHER

SEC. 23 TEMP.

DESCRIPTION CONTROL TIES JOB NO.

LEFT	CENTER LINE	RIGHT
<p>STA. 239+36.2 S. 1/4 Post SEC. 23 LIBERTY TWP. $\Delta = 0^\circ - 11' RT.$ "STONE" - SET BOAT SPK. PLAKE ROAD #164</p>	<p>#23</p>	<p>SHINER IN T. POLE N.E. 55.02 SHINER IN P. POLE N.W. 46.15 SHINER IN T. POLE S.W. 39.48 N.E. COR. W. WALL N.W. 45.70' N.W. COR. E. WALL N.E. 41.02' SHINER IN T. POLE N.E. 51.47'</p>
<p>STA. 212+27 S.W. COR. SEC. 23 LIBERTY TWP. No ANGLE "STONE" - SET BOAT SPK. MITCHELL ROAD #163</p>	<p>#22</p>	<p>SHINER IN P. POLE N.N.W. 74.91' SHINER IN T. POLE N.E. 75.20' SHINER IN P. POLE N.W. 63.79' "X" - S. END TOP HOWL. E. SIDE MITCHELL RD. N.E. 30.67' "X" - S. END TOP HOWL. W. SIDE (LEANING) MITCHELL RD. N.W. 30.97' SHINER IN T. POLE E.S.E. 58.14'</p>

PERSONNEL	TITLE	PERSONNEL	TITLE	COUNTY	DATE
				Wood	OK 12-4-57
				S. R. #281	7-22-59
					WEATHER 11-3-60
					W.F.K
				SEC.	Silvester 2-28-64
					TEMP

DESCRIPTION	LEFT	CENTER LINE	RIGHT	JOB NO.
Fd. 1" Iron Bolt			Shiner in P. Pole	S.W. 84.01
Sta. 159+34.3			Shiner in 18" Elm	S.S.W. 80.2
S.E. cor. sec. 21. Liberty			Shiner in 24" Elm	N.N.W. 55.62
Twp. Stone. P.K. & shiner			Shiner in P.P.	N.E. 47.00 47.0
$\Delta = 0^\circ - 07' \text{lt.}$			Shiner in P.P.	S.S.E. 89.6
Liberty Hi. Road				.6
20	#161			
Fd. 3/4" Iron Rod			Shiner in P.P.	S. 29.13
Sta. 185+79.6			Shiner in 18" Box Elder	N.E. 60.35
S.W. post sec. 22. Liberty			Shiner in 18" Box Elder	N. 55.67
Twp. Stone. P.K. Nail			S.E. cor. stone post	N.N.W. 25.30
$\Delta = 0^\circ - 45' \text{lt.}$			S.W. cor. Stone post	N.W. 84.69
		9" above ground	P.P. spk. E. side 30" Elm	S.W. 71.4
21	#162			72.66
Fd. 3/4" Head (boat spk.)			Shiner in P. Pole	N.N.W. 74.91
Sta. 212+27			Shiner in T.P.	N.E. 75.2
S.W. cor. sec. 23.			Shiner in P.P.	N.W. 63.7
Stone P.P. spk. on top - P.K. & shiner			X S. end top Hdwl E. side	
No Angle			Mitchell Rd N.E.	30.6
Mitchell Rd.			X S. end top Hdwl. W. side	
			Mitchell Rd. N.W.	30.6
22	#163			
Sta. 239+36.2			Shiner in T.P.	N.E. 55.0
S.W. post sec. 23.			Shiner in P.P.	N.W. 46.1
Liberty Twp. Stone. Tip in			Shiner in T.P.	S.W. 39.42 39.4
$\Delta = 0^\circ - 11' \text{lt.}$		P.K. & shiner	N.E. cor. w. wall	N.W. 45.6
Place Rd.			N.W. cor. E. wall	N.E. 41.0
23	#164			