

O.D.O.T. DISTRICT 2 SURVEY OFFICE (USE ONLY)

PERSONNEL

REFERENCE NO. 24

SHEET 12 OF 36

NOTES NIESE

DATE 10/5/21

ROUTE SR 281

H.C. AUBLE

WEATHER OVERCAST

COUNTY WOOD

R.C. NIESE

TEMP. 66°

TOWNSHIP LIBERTY

DWG BY RHOADES PID 94340

SECTION 23

T 4 N R 10 E

TYPE MONUMENT MAG/WASHER

ON SURFACE - ~~BELOW~~ ON

OFFSET Q PAVEMENT ON LT : RT

- TO - EDGE PAVEMENT

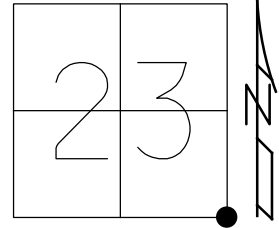
STATION: 585+71.34

HORZ. DATUM: NAD83 2011

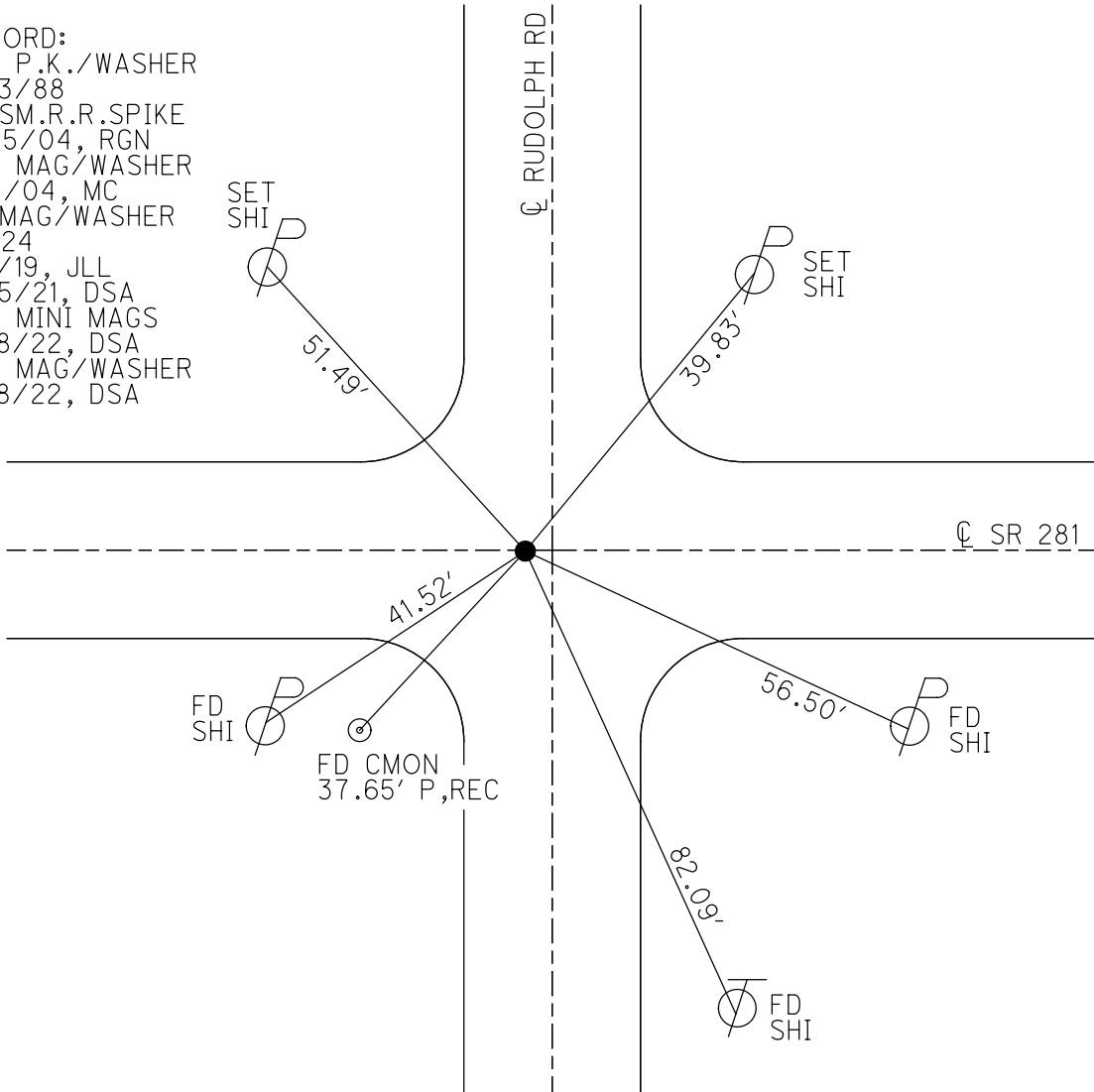
GEOID: NAVD88 2018

GRID: NORTHING: 591081.918

EASTING: 1647075.575



RECORD:
 SET P.K./WASHER
 10/3/88
 FD SM.R.R.SPIKE
 5/25/04, RGN
 SET MAG/WASHER
 8/3/04, MC
 FD MAG/WASHER
 REF24
 7/1/19, JLL
 10/5/21, DSA
 SET MINI MAGS
 8/18/22, DSA
 SET MAG/WASHER
 12/8/22, DSA



O.D.O.T. DISTRICT 2 SURVEY OFFICE (USE ONLY)

PERSONNEL

REFERENCE NO. 24

SHEET 13 OF 25

NOTES NUHFER

DATE 5-25-04

ROUTE S.R. 281

H.C. HOMAN

WEATHER RAIN

COUNTY WOOD

R.C. ADKINS

TEMP. +65°

TOWNSHIP LIBERTY

SECTION 23

T 4 N R 10 E

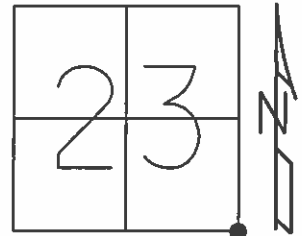
TYPE MONUMENT SM. R.R. SPIKE

ON SURFACE - ~~BELOW~~ YES

~~RIGHT~~ - Q PAV'T ~~RIGHT~~ YES

- TO - EDGE PAVEMENT 2' WEST OF
* RUDOLPH RD.

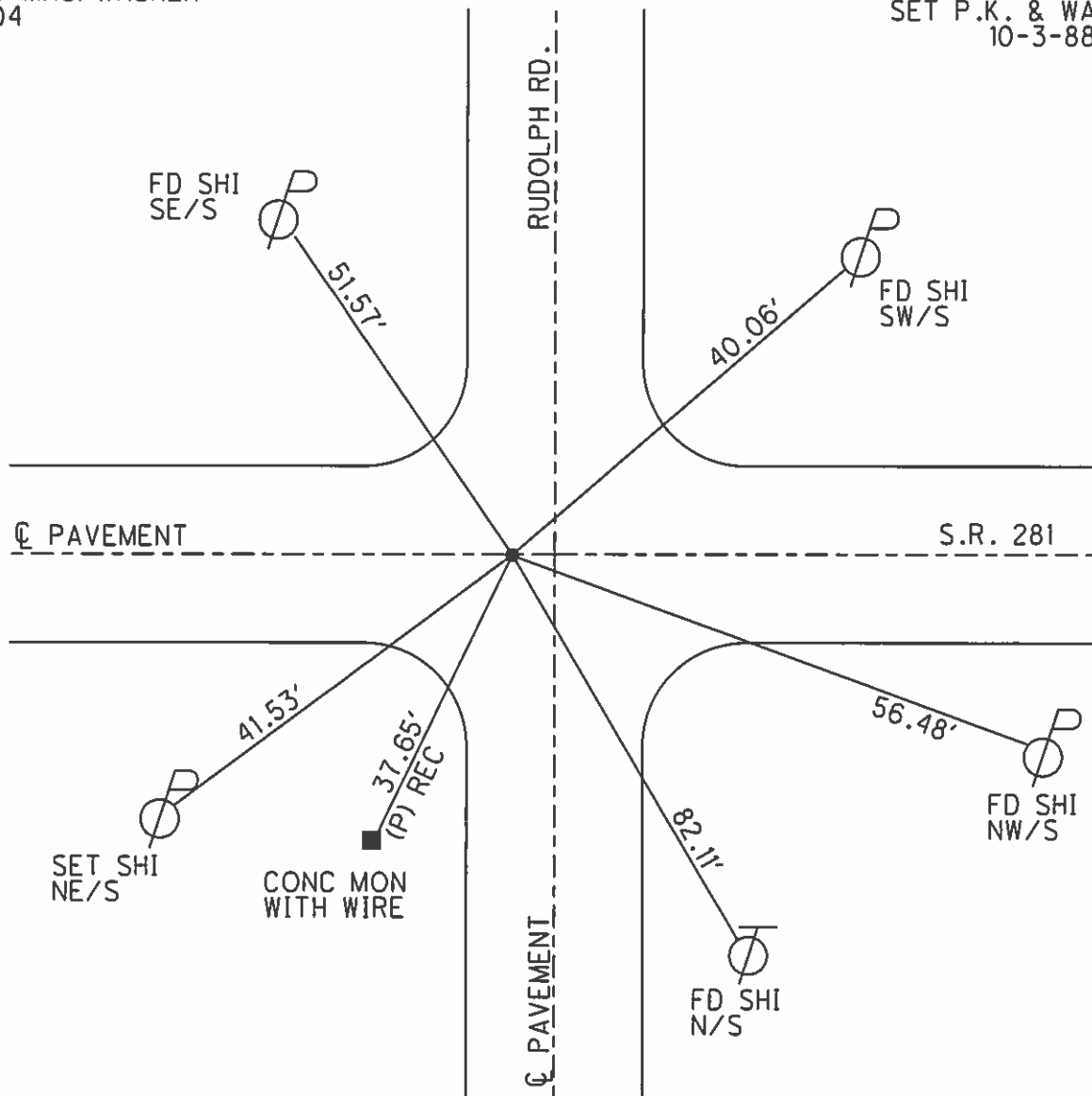
S.L.M. 586+35



Grid: Northing: _____ Easting: _____

RESET MAG/WASHER
8-3-04
M.C.

SET P.K. & WASHER
10-3-88



O.D.O.T. DISTRICT 2 SURVEY OFFICE

PERSONNEL

REFERENCE NO. 24

SHEET OF

NOTES BAENHISEL

H.C. Loehrke

R.C. Reed

HOFFMAN

DATE 8-24-88

WEATHER Sunny

TEMP. +80°

ROUTE S.E. 281

COUNTY Wood

TOWNSHIP L. beet

SECTION 23

T 4 N R 10 E

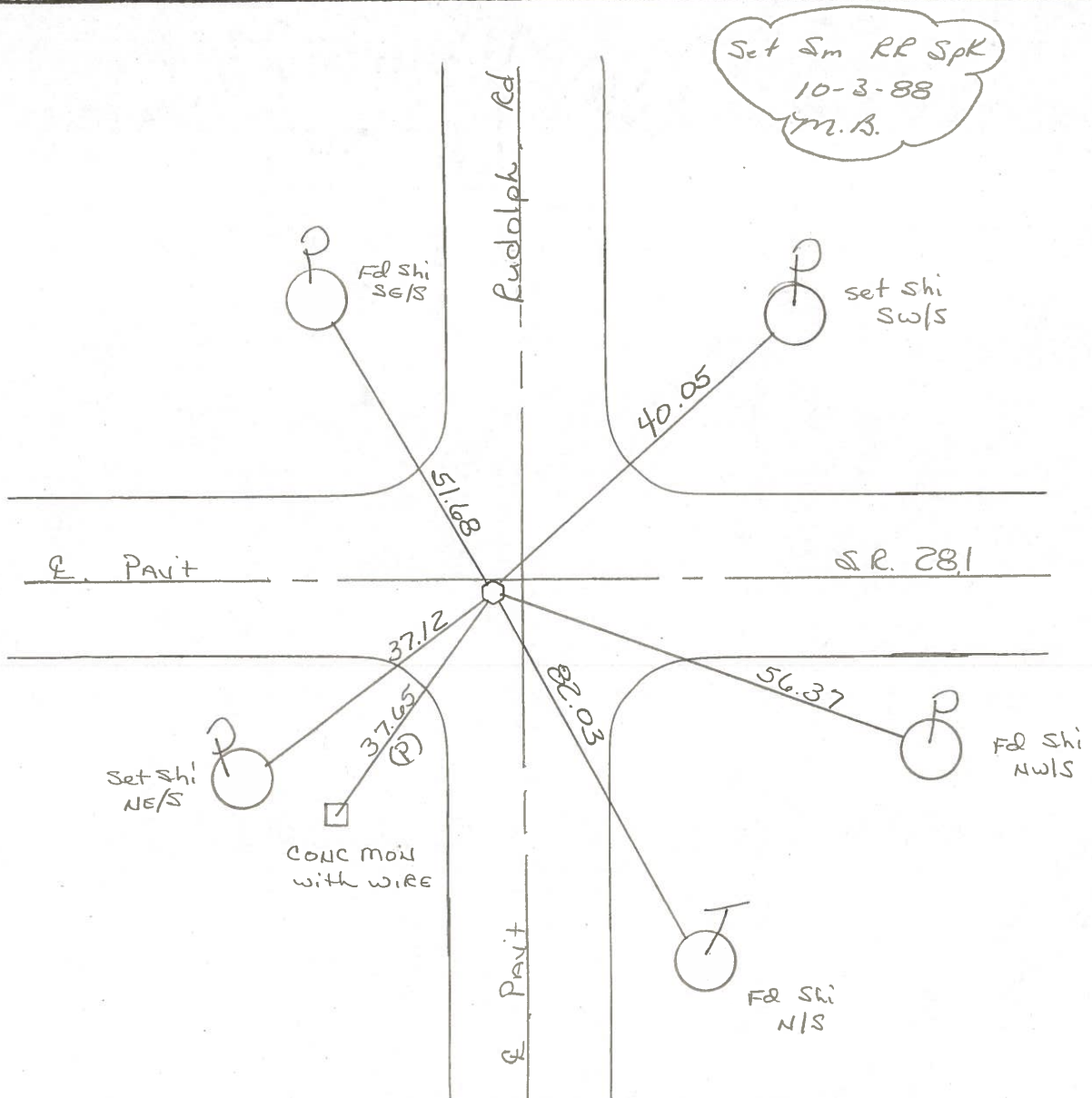
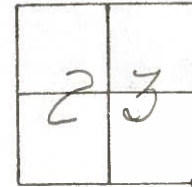
TYPE MONUMENT Sm RR Spk

ON SURFACE - BELOW yes

LEFT - 0 PAV'T. - RIGHT .8

- TO - EDGE PAVEMENT 2' west of E Rudolph Rd

S.L.M. 586 + 35



County Wood SR 281

Date 5-2-1979

Township Liberty

Weather Clear

Section SE Corner Sec. 23

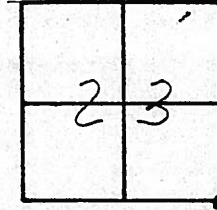
Temp. 68°

T4N, R10E

Personnel Smith

Knape

Mead

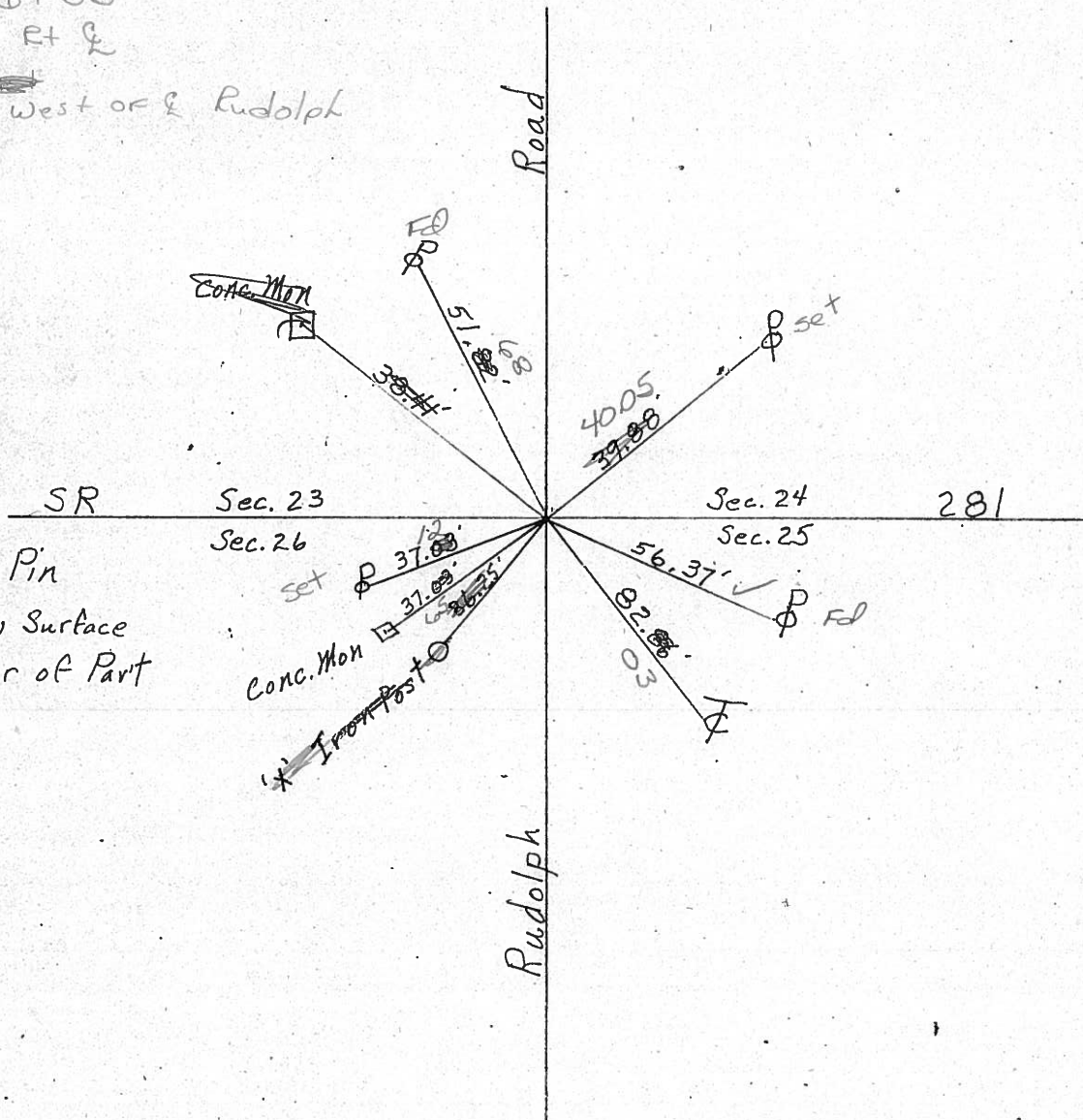


24

586+35

.8 ft &

2.0 west of & Rudolph



Fd. Iron Pin
2" below Surface
on Center of Part

RE COPIED
1-26-71

PERSONNEL TITLE PERSONNEL TITLE COUNTY Wood DATE OK-8-7-69
 PERSONNEL TITLE PERSONNEL TITLE S. R. # 281 WEATHER
 PERSONNEL TITLE PERSONNEL TITLE SEC. 24 TEMP.

DESCRIPTION CONTROL TIES JOB NO.

LEFT	CENTER LINE	RIGHT
STA. 292+80.65 S 1/4 Post. SEC. 24 LIBERTY TWP. Δ = 0°-06' RT. "STONE"-SET BOAT SPK. 1/2 MILE W. OF U.S. #25 #166	#25	SHINER IN T. POLE N.N.E. 40.38' SHINER IN P. POLE S.E. 41.18' SHINER 10' SYCAMORE S.S.W. 37.00' N.E. COR. Ho. FON. S.W. 101.55' SHINER IN 6" MAPLE S.S.W. 47.70'
STA. 266+21.9 S.W. COR. SEC. 24 LIBERTY TWP. Δ = 0°-16' LT. "STONE"-SET BOAT SPK. RUDOLPH ROAD #165	#24	SHINER IN T. POLE N.E. 38.30' SHINER IN P. POLE S.E. 56.38' SHINER IN P. POLE S.W. 37.02' CONC. MON. N.W. 38.35' CONC. MON. S.W. 36.96' "X" IN IRON COR. POST. S.W. 36.18' (CLEANING)

PERSONNEL	TITLE	PERSONNEL	TITLE

COUNTY Wood DATE OK 12-4-57
11-3-60
 S. R. #281 WEATHER W.F.K.
Silvester 2-28-64
 SEC. _____ TEMP. _____

DESCRIPTION	LEFT	CENTER LINE	RIGHT	JOB NO.
-------------	------	-------------	-------	---------

Sta. 266+21.9			Shiner in T.P. N.E.	38.32
S.W. cor. sec. 24 Liberty			Shiner in P.P. S.E.	56.34
Twp. Stone with I. Rod - P.K. & shiner			Shiner in P.P. S.W.	37.02 36.93
on top.			conc. mon. (plumbed) N.W.	38.35
$\Delta = 0^\circ - 16' Lt.$			conc. mon. S.W.	36.91 36.95
Rudolph Rd.			X in iron cor. post S.W.	35.74 35.65
				35.98

(24)

#165

Sta. 292+80.65			Shiner in T.P. N.N.E.	40.41
S. 1/4 post sec. 24			Shiner in P.P. S.E.	41.18
Liberty twp.			Shiner in 10' sycamore S.S.W.	37.09
1/2 mile W. of U.S. 25 #68			N.E. cor. House fdn. S.W.	40.55 40.50
$\Delta = 0^\circ - 06' Rt.$			Shiner in 6' maple S.S.W.	47.70
Stone with iron bolt - P.K. & shiner				
on top.				

(25)

#166

Note:

For S.E. cor. sec 24			Shiner in T.P. N.E.	47.41
Liberty twp. sec			Shiner in P.P. S.W.	49.33
#234 S. 1/4 220 Sec. E.			X on E. pt Hdwl. W.N.W.	51.22
& U.S. #25 & S.R. #281			conc. R/W. mon. S.E.	69.88

(26)