

O.D.O.T. DISTRICT 2 SURVEY OFFICE (USE ONLY)

PERSONNEL

REFERENCE NO. 25

SHEET 13 OF 36

NOTES NIESE

DATE 10/5/21

ROUTE SR 281

H.C. AUBLE

WEATHER OVERCAST

COUNTY WOOD

R.C. NIESE

TEMP. 66°

TOWNSHIP LIBERTY

DWG BY RHOADES PID 94340

SECTION 24

T 4 N R 10 E

TYPE MONUMENT MAG/WASHER

ON SURFACE - ~~BELOW~~ ON

OFFSET Q PAVEMENT ON LT : RT

11.2' TO RT EDGE PAVEMENT

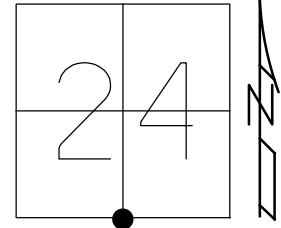
STATION: 612+29.50

HORZ. DATUM: NAD83 2011

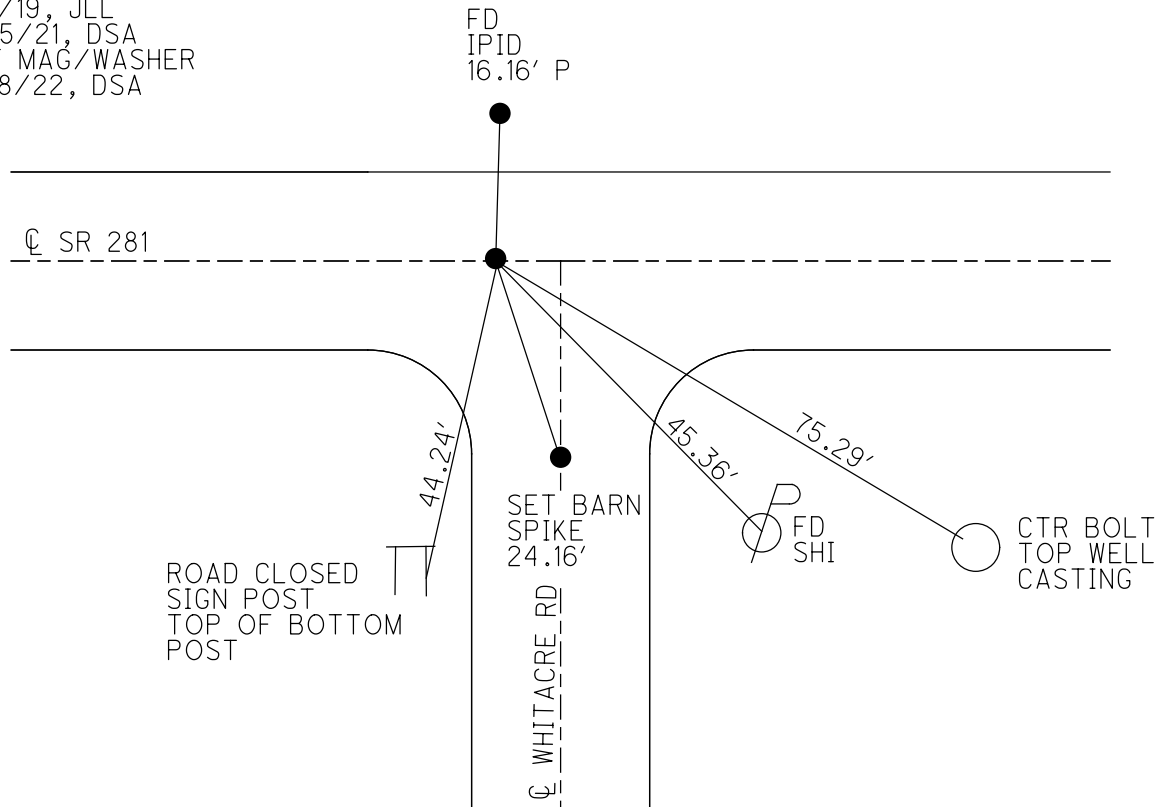
GEOID: NAVD88 2018

GRID: NORTHING: 591010.843

EASTING: 1649732.782



RECORD:  
 SET P.K./WASHER  
 10/3/88  
 FD SM.R.R.SPIKE  
 5/25/04, RGN  
 SET MAG/WASHER  
 7/8/04, RGN  
 FD MAG/WASHER  
 REF25  
 7/1/19, JLL  
 10/5/21, DSA  
 SET MAG/WASHER  
 12/8/22, DSA



O.D.O.T. DISTRICT 2 SURVEY OFFICE (USE ONLY)

PERSONNEL

REFERENCE NO. 25

SHEET 14 OF 25

NOTES NUHFER

DATE 5-25-04

ROUTE S.R. 281

H.C. HOMAN

WEATHER RAIN

COUNTY WOOD

R.C. ADKINS

TEMP. +65°

TOWNSHIP LIBERTY

SECTION 24

T 4 N R 10 E

TYPE MONUMENT SM. R.R. SPIKE

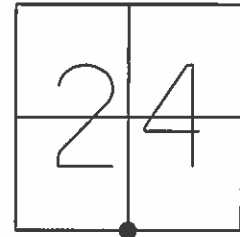
ON SURFACE - ~~LOW~~ YES

~~PAV'T~~ RIGHT YES

11.2' TO RT. EDGE PAVEMENT

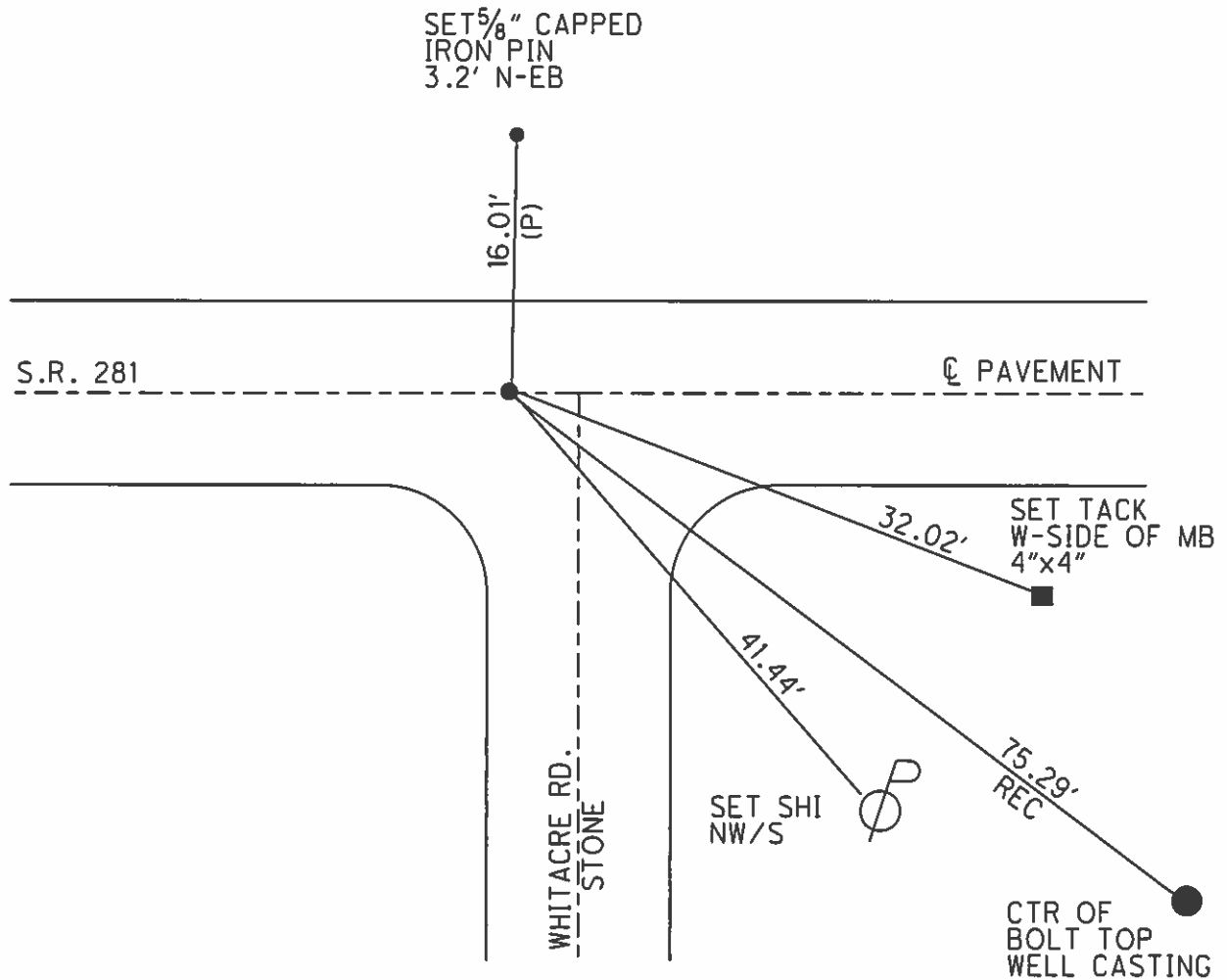
S.L.M. 612+92

Grid: Northing: \_\_\_\_\_ Easting: \_\_\_\_\_



SET MAG/WASHER  
7-8-04  
RGN

SET P.K. & WASHER  
10-3-88



# O.D.O.T. DISTRICT 2 SURVEY OFFICE

PERSONNEL

REFERENCE NO. 25

SHEET      OF     

NOTES BAENHISEL

H.C. Loehrke

R.C. Reed

HOFFMAN

DATE 8-24-88

WEATHER Sunny

TEMP. +80°

ROUTE S.E. 281

COUNTY Wood

TOWNSHIP Liberty

SECTION 24

T 4 N R 10 E

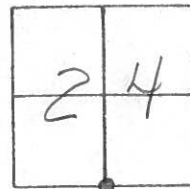
TYPE MONUMENT Sm RR Spk

ON SURFACE - BELOW yes

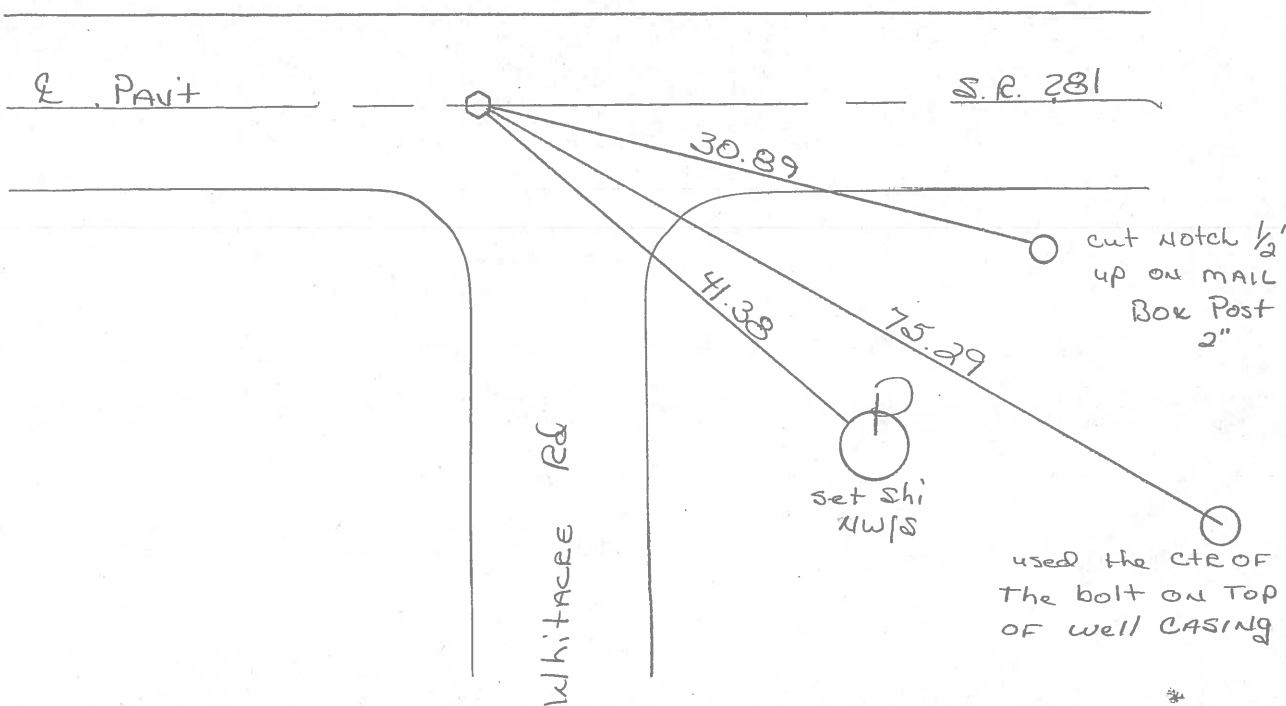
LEFT - ~~Q~~ PAV'T. - RIGHT yes

9.70 TO Lt EDGE PAVEMENT

S.L.M. 612+92



Set Sm RR Spk  
 10-3-88  
 M.B.



County Wood SR 281

Date 5-2-1979

Township Liberty

Weather Clear

Section 5/4 Post Sec. 24

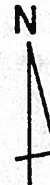
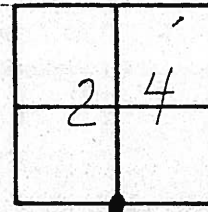
Temp. 68°

T4N, R10E

Personnel Smith

Knape

Mead



# 25

Sm RR Spk  
 612 + 92  
 on E  
 9.7 to Rt ed

SR

17" Mulberry

103.26'

47.48'

36.92'

Interior Line Sec. 24

29.16' T-Hub

3089  
 MAIL BOX  
 BOX

Notch 1/2" up  
 281

41.25'  
 38' Set

75.29'  
 Near Side  
 Well Casing  
 used CTR OF  
 TOP ON TOP  
 Bolt  
 OF WELL  
 CASING

Fd. Boat Spike  
 @ Surface in  
 Center of Road

14" Maple

12" Sycamore

T-Hub  
39.18'

Whitacre Road  
Interior Line Sec. 25

RE UNIT  
1-26-71

PERSONNEL	TITLE	PERSONNEL	TITLE	COUNTY	WOOD	DATE	OK-8-7-69
CK. BY				S. R.	#281	WEATHER	
BURNSIDE				SEC.	24	TEMP.	
SMITH				DESCRIPTION	CONTROL TIES		JOB NO.
HOFFMAN				LEFT	CENTER LINE	RIGHT	

STA. 292+80.65 S 1/4 Post, SEC. 24 LIBERTY TWP. Δ = 0°-06' RT. "STONE"-SET BOAT SPK. 1/2 MILE W. OF U.S. #25  #166	#25	SHINER IN T. POLE N.N.E. 40.3 SHINER IN P. POLE S.E. 41.18 SHINER 10' SYCAMORE S.S.W. 37.0 N.E. COR. Ho. FON. S.W. 101.55 SHINER IN 6" MAPLE S.S.W. 47.70
STA. 266+21.9 S.W. COR. SEC. 24 LIBERTY TWP. Δ = 0°-16' LT. "STONE"-SET BOAT SPK.  RUDOLPH ROAD  #165	#24	SHINER IN T. POLE N.E. 38.30 SHINER IN P. POLE S.E. 56.38 SHINER IN P. POLE S.W. 37.02 CONC. MON. N.W. 38.35 CONC. MON. S.W. 36.96 "X" IN IRON COR. POST S.W. 36.18 (CLEANING)

PERSONNEL TITLE PERSONNEL TITLE COUNTY Wood DATE OK 12-4-57  
11-3-60  
 S. R. #281 WEATHER W.F.K  
Silvester 2-28-64  
 SEC. TEMP

DESCRIPTION LEFT CENTER LINE RIGHT JOB NO.

Sta. 266 + 21.9 Shiner in T.P. N.E. 38.3  
 S.W. cor. sec. 24 Liberty Shiner in P.P. S.E. 56.3  
 Twp. Stone with I. Rod - P.K. & shiner Shiner in P.P. S.W. 37.02 36.9  
 on top. Conc. mon. (plumbed) M.W. 38.3  
 $\Delta = 0^\circ - 16' Lt$  Conc. mon. S.W. 36.91 36.94  
 Rudolph Rd. X in iron cor. post S.W. ~~35.74~~ 35.6  
 #165 35.98

(24)

Sta. 292 + 80.65 Shiner in T.P. N.N.E. 40.4  
 S.W. post sec. 24 Shiner in P.P. S.E. 41.1  
 Liberty Twp. Shiner in 10' Sycamore SSW. 37.0  
 1/2 mile W. of U.S. 25 #68 N.E. cor. House fdn. S.W. <sup>101.55</sup> 101.5  
 $\Delta = 0^\circ - 06' Pt$  Shiner in 6" maple S.S.W. 47.2  
 Stone with iron bolt - P.K. & shiner  
 on top.

(25)

#166

Notes:  
 For S.E. cor. sec. 24 Shiner in T.P. N.E. 47.4  
 Liberty Twp. Shiner in P.P. S.W. 49.3  
 #284 S. 1/4 20 sec. E. X on E. pt Hdwl. W.N.W. 51.2  
 & U.S. #25 & SE. #281 Conc. R/W. mon. S.E. 69.8

(26)