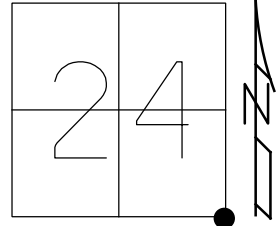


O.D.O.T. DISTRICT 2 SURVEY OFFICE (USE ONLY)

PERSONNEL _____ REFERENCE NO. 26 SHEET 14 OF 36
 NOTES NIESE DATE 12/8/22 ROUTE SR 281
 H.C. AUBLE WEATHER OVERCAST COUNTY WOOD
 R.C. MILLER TEMP. 41° TOWNSHIP LIBERTY
 RHOADES SECTION 24
 DWG BY RHOADES PID 94340 T 4 N R 10 E

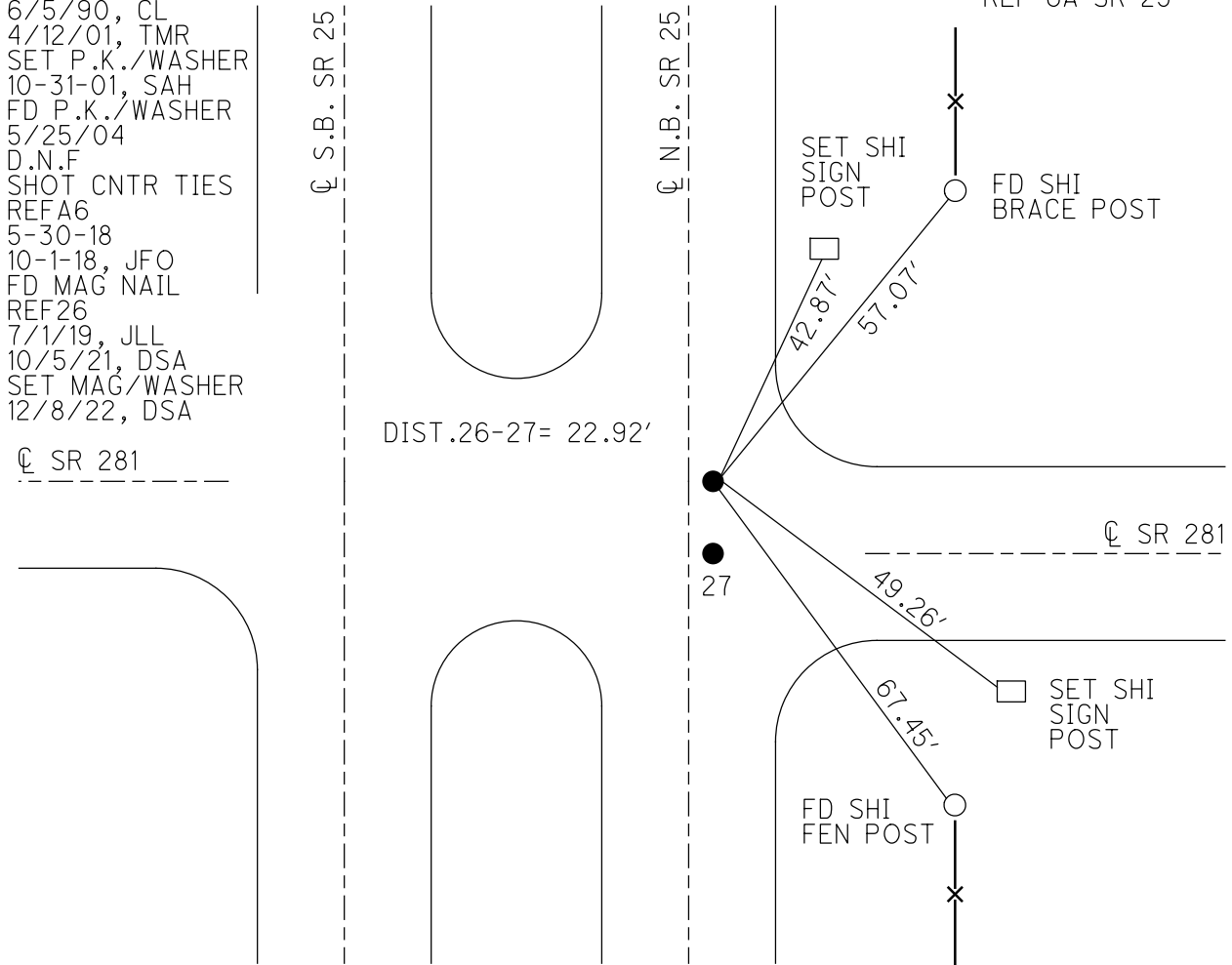
TYPE MONUMENT MAG NAIL
 ON SURFACE - ~~BELOW~~ ON _____
 OFFSET \odot PAVEMENT 2.2' ~~LT~~ : RT
 - TO - EDGE PAVEMENT
 STATION: 638+86.53



HORZ. DATUM: NAD83 2011 GEOID: NAVD88 2018
 GRID: NORTHING: 590943.615 EASTING: 1652388.965

RECORD:
 FD BRASS MON
 FD P.K./WASHER
 6/5/90, CL
 4/12/01, TMR
 SET P.K./WASHER
 10-31-01, SAH
 FD P.K./WASHER
 5/25/04
 D.N.F
 SHOT CNTR TIES
 REFA6
 5-30-18
 10-1-18, JFO
 FD MAG NAIL
 REF26
 7/1/19, JLL
 10/5/21, DSA
 SET MAG/WASHER
 12/8/22, DSA

NOTE: LIBERTY TWP
 S.E. COR SEC 24
 REF 6A SR 25



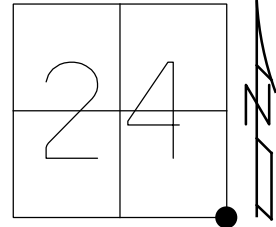
\odot SR 281

O.D.O.T. DISTRICT 2 SURVEY OFFICE (USE ONLY)

PERSONNEL _____ REFERENCE NO. 26 SHEET 15 OF 36
 NOTES RHOADES DATE 5/30/18 ROUTE SR 281
 H.C. O'DONNELL WEATHER CLOUDY COUNTY WOOD
 R.C. TRENKA TEMP. 77° TOWNSHIP LIBERTY
 SECTION 24
 DWG BY MILLER PID NO PID T 4 N R 10 E

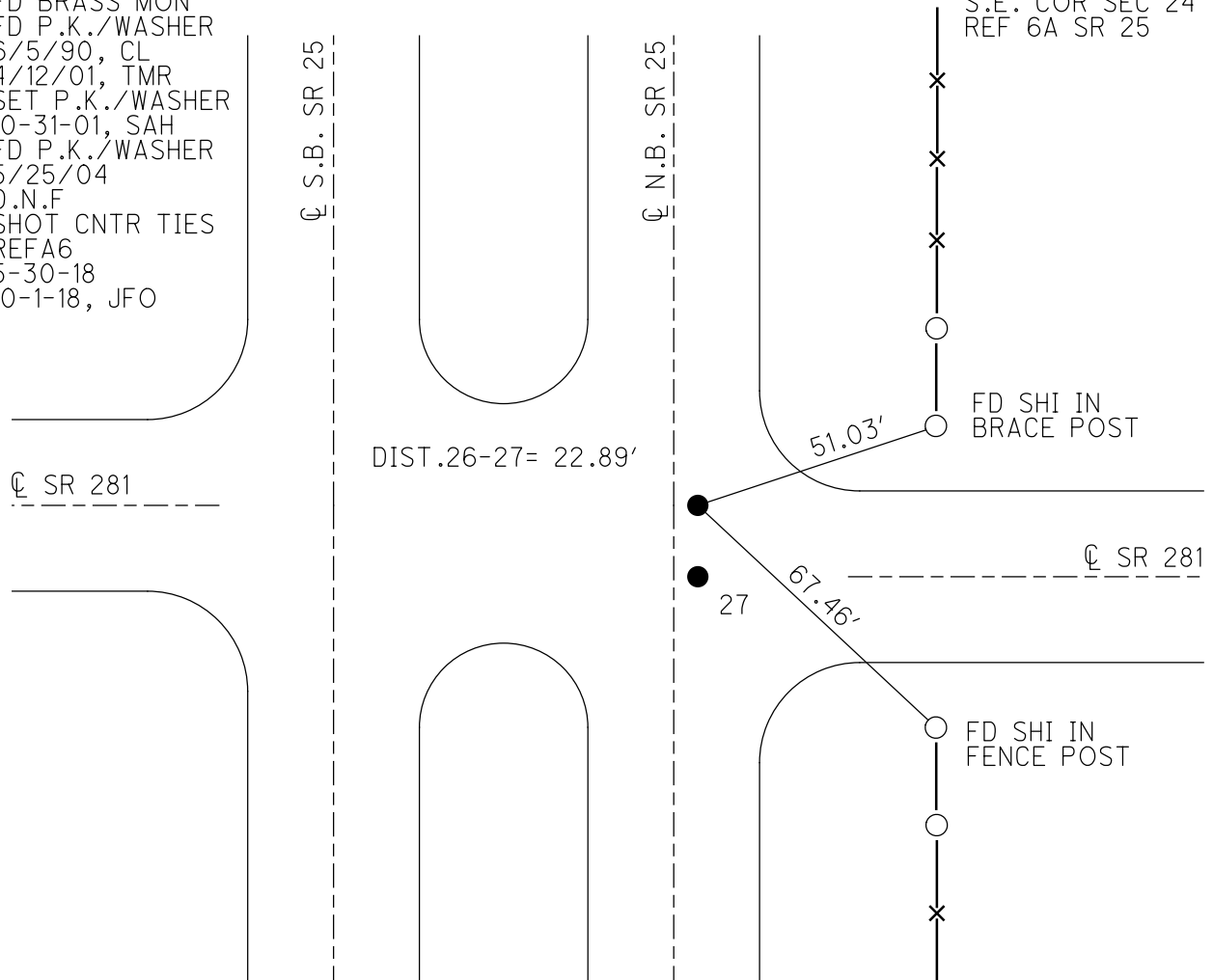
TYPE MONUMENT _____ CNPT _____
 ON SURFACE - ~~BELOW~~ ON _____
 OFFSET \varnothing PAVEMENT 2.2' ~~LT~~ : RT
 - TO - EDGE PAVEMENT
 STATION: 639+50

HORZ. DATUM: NAD83(2011) GEOID: NAVD88 2012A
 GRID: NORTHING: 590943.665 EASTING: 1652388.927



RECORD:
 FD BRASS MON
 FD P.K./WASHER
 6/5/90, CL
 4/12/01, TMR
 SET P.K./WASHER
 10-31-01, SAH
 FD P.K./WASHER
 5/25/04
 D.N.F.
 SHOT CNTR TIES
 REFA6
 5-30-18
 10-1-18, JFO

NOTE: LIBERTY TWP
 S.E. COR SEC 24
 REF 6A SR 25



O.D.O.T. DISTRICT 2 SURVEY OFFICE (USE ONLY)

PERSONNEL

REFERENCE NO. 26 & 27

SHEET 15 OF 25

NOTES HOFFMAN

DATE 6-5-90

ROUTE S.R. 25 at S.R. 281

H.C. LOEHRKE

WEATHER CLEAR

COUNTY WOOD

R.C. BARNHISEL

TEMP. +68°

TOWNSHIP LIBERTY/PORTAGE

SECTION 19, 24, 25, 30

T 4 N R 10/11 E

TYPE MONUMENT P.K.'s/WASHER

ON SURFACE - ~~BELLOW~~ YES

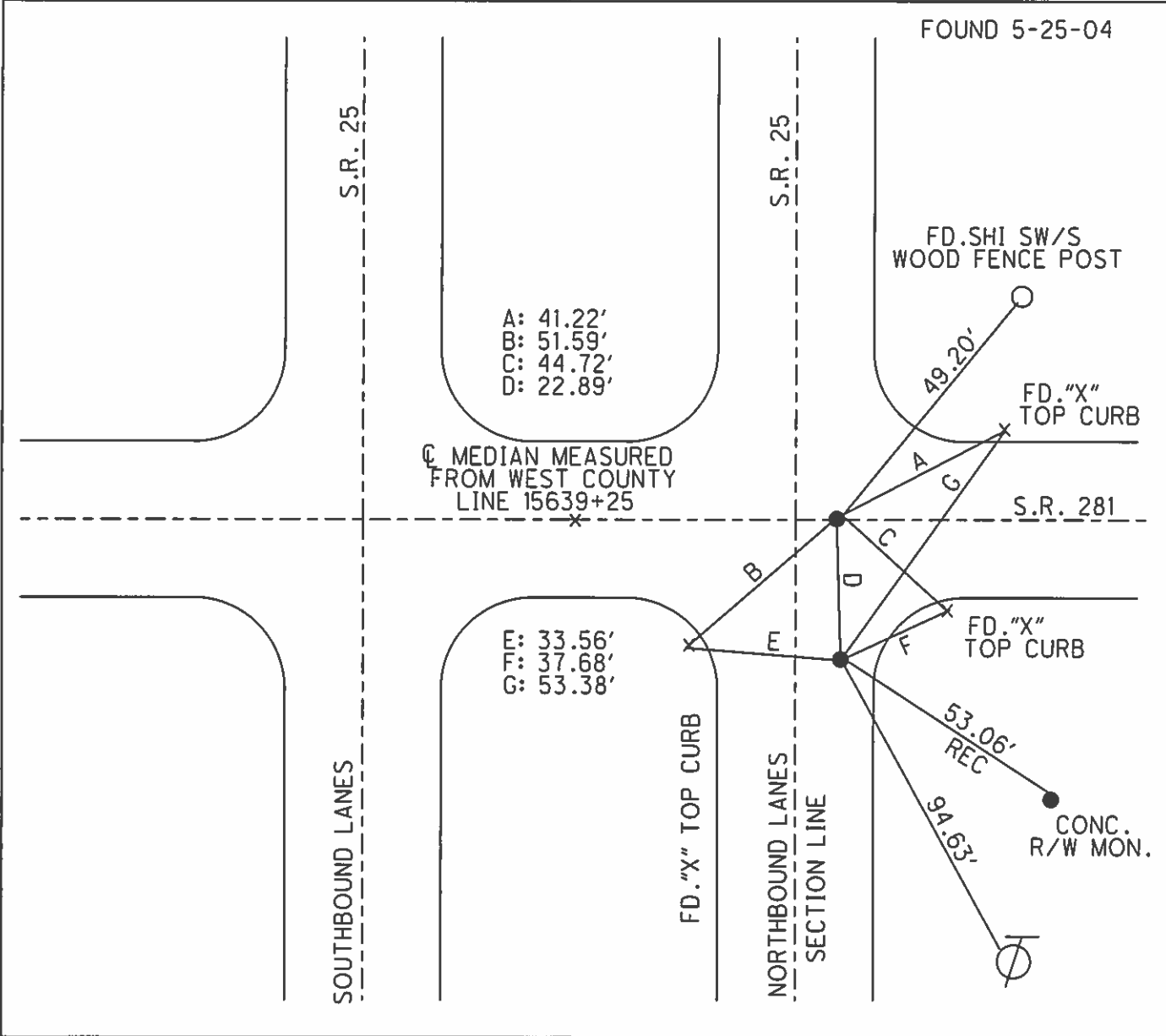
- ☉ PAV'T - RIGHT 2.2' (S.R. 25)

- TO - EDGE PAVEMENT

S.L.M. S.R. 281 = 639+50

Grid: Northing: _____ Easting: _____

24	19
LIBERTY TWP	PORTAGE TWP
25	30



O.D.O.T. DISTRICT 2 SURVEY OFFICE

PERSONNEL

REFERENCE NO. 26927

SHEET 1 OF 11

NOTES HOFFMAN

H.C. LOEHRKE

DATE 6-5-90

ROUTE SR 25 at SR 281

R.C. BARNHISEL

WEATHER CLEAR

COUNTY WOOD

TEMP. 68°

TOWNSHIP LIBERTY-PORTAGE

SECTION 24 - 19

T4 N R 10/11 E

TYPE MONUMENT P.K.'s/WASHER

ON SURFACE - BELOW YES

~~LEFT - C PAV'T.~~ - RIGHT 2.2 of SR 25

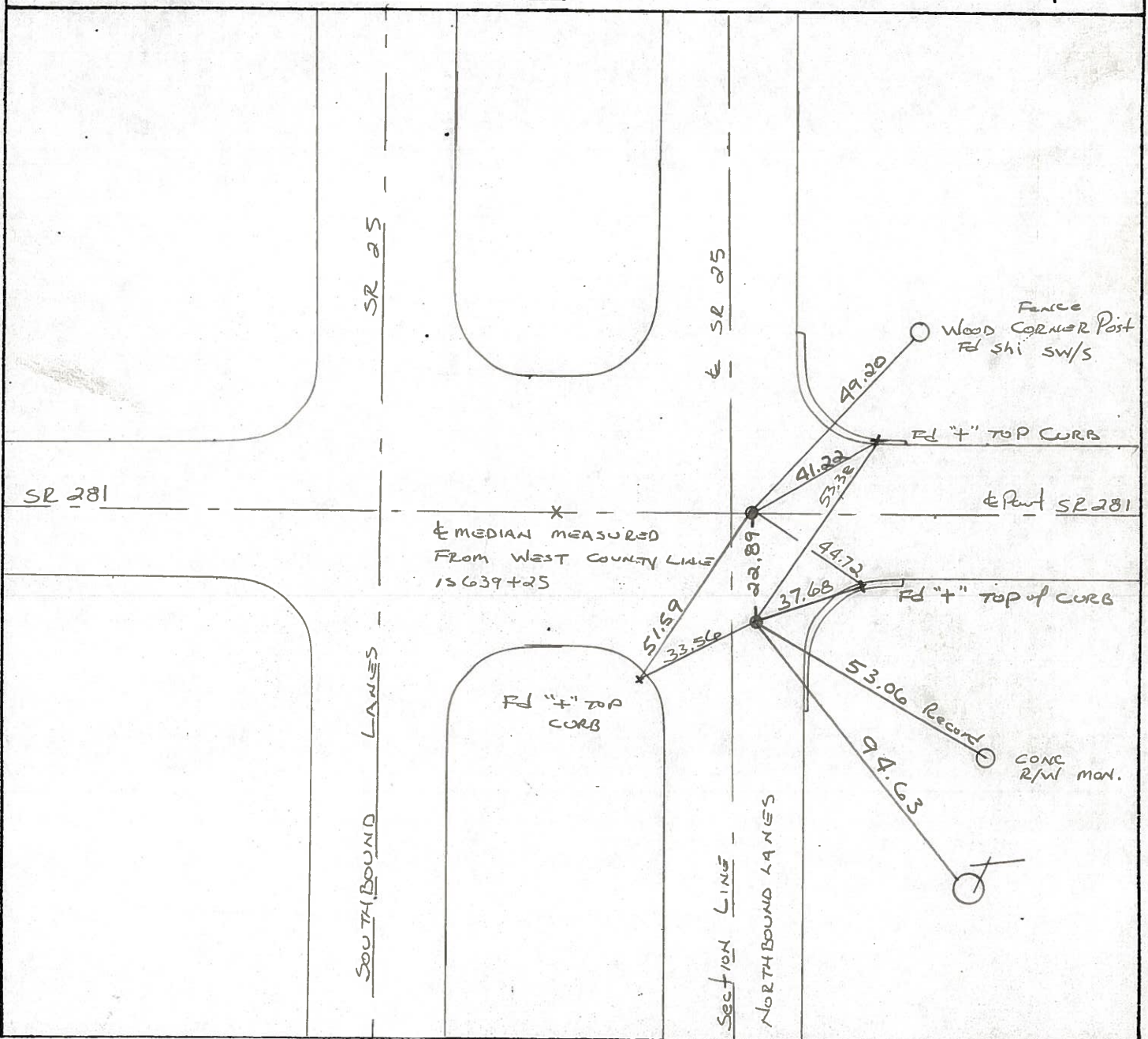
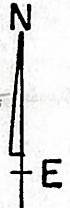
TO EDGE PAVEMENT

S.L.M. SR 281 = 639 + 50

24	19
25	30

LIBERTY
TWP

PORTAGE
TWP



County Wood SR 281

Date 5-2-1979

Township Liberty & Portage

Weather Clear

Section SE Corner Sec. 24 SW Corner Sec. 19

Temp. 68°

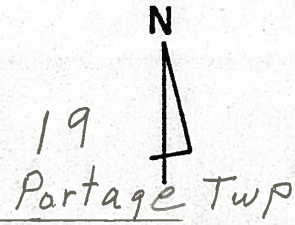
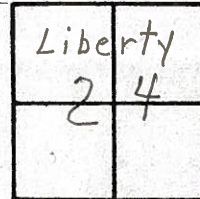
T4N, R10E

Liberty
Portage Twp.
T4N R10E

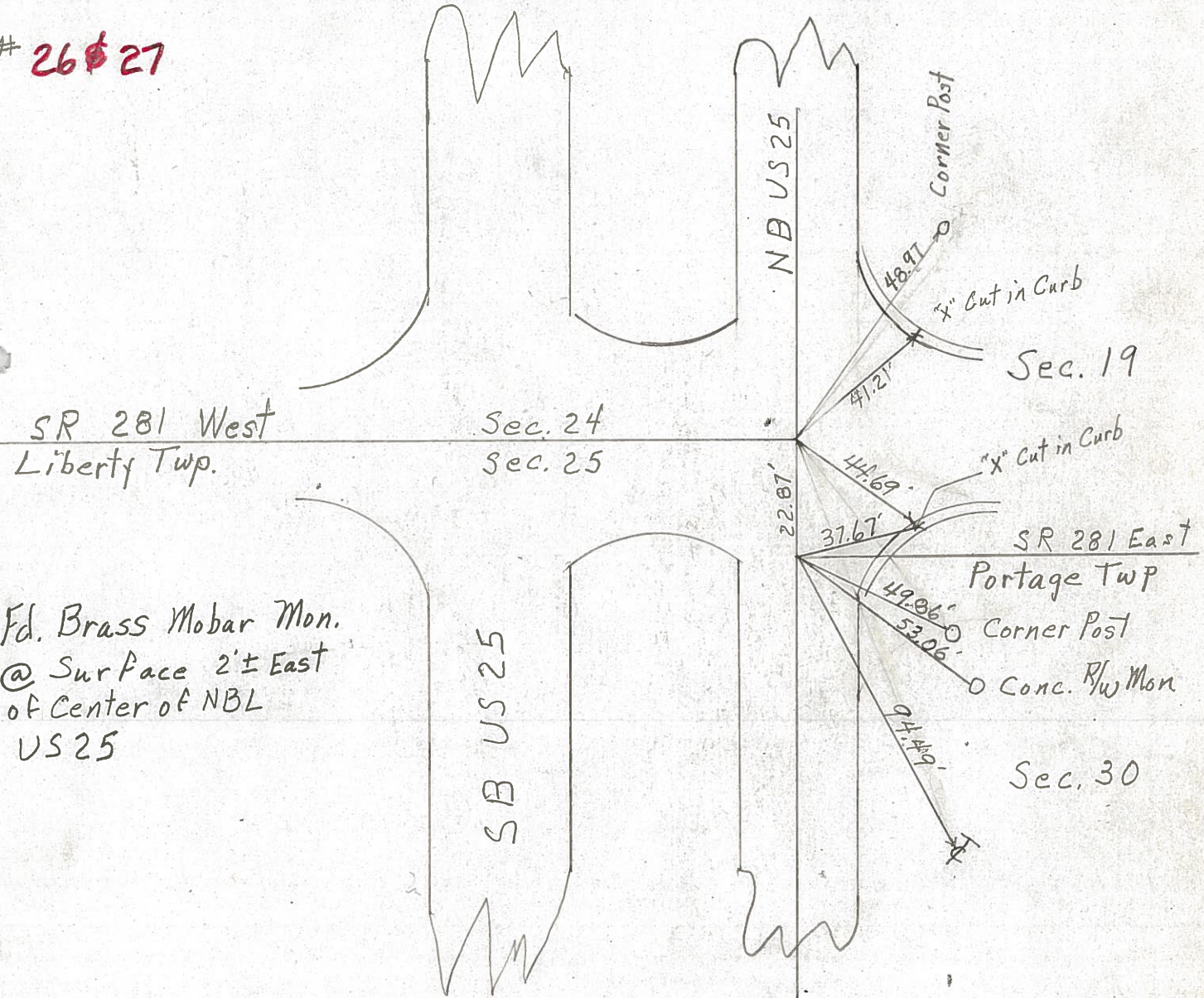
Personnel Smith

Knape

Mead



26 & 27



SR 281 West
Liberty Twp.

Sec. 24
Sec. 25

Fd. Brass Mobar Mon.
@ Surface 2'± East
of Center of NBL
US 25

Sec. 19

SR 281 East
Portage Twp

Corner Post
Conc. R/W Mon

Sec. 30

PERSONNEL	TITLE	PERSONNEL	TITLE
BURNSIDE			
SMITH			
HOLCOMBE			
BOWERS			

COUNTY WOOD DATE _____
 S. R. #281 & 25 WEATHER _____
 SEC. 24 & 30 TEMP. _____

DESCRIPTION _____ LEFT _____ CENTER LINE _____ RIGHT _____ JOB NO. _____

DESCRIPTION	LEFT	CENTER LINE	RIGHT	JOB NO.
STA. 429+61.95 = U.S. #25 S.E. COR. SEC. 24 LIBERTY TWP. BRASS MON.			* SHI. IN END FENCE POST N.E. 48.18' SHI. IN T. POLE N.E. 50.34' FACE STEEL LIGHT POLE N.E. 40.22' 4" TOP CURB RADIUS E.S.E. 44.64' SHI. IN END FENCE POST S.E. 66.26' CONC. RW MON S.E. 70.20'	
			NOTE: <u>22.84'</u> BETWEEN POINTS	
STA. 429+39.2 = U.S. #25 N.W. COR. SEC. 30 PORTAGE TWP. BRASS MON.			SHI. IN END FENCE POST N.E. 65.74' SHI. IN T. POLE N.E. 67.20' FACE STEEL LIGHT POLE N.E. 59.91' 4" TOP CURB RADIUS E. 37.63' SHI. IN END FENCE POST S.E. 49.84' CONC. RW MON S.E. 53.10'	

PERSONNEL TITLE PERSONNEL TITLE

COUNTY Wood

DATE OK 12-4-57

S. R. #281

WEATHER 11-3-60 W.F.K.

SEC.

Silvester 2-28-64

TEMP

DESCRIPTION

LEFT

CENTER LINE

RIGHT

JOB NO.

Sta. 266+21.9	Shiner in T.P. N.E.	38.3
S.W. cor. sec. 24 Liberty	Shiner in P.P. S.E.	56.3
Twp. Stone with Iron Rod - P.K. & shiner	Shiner in P.P. S.W.	37.02 36.9
on top.	Conc. mon. (plumbed) N.W.	38.3
$\Delta = 0^\circ - 16' Lt$	Conc. mon. S.W.	36.91 36.94
Rudolph Rd.	X in iron cor. post S.W.	35.74 35.6
#165		35.98

(24)

Sta. 292+80.65	Shiner in T.P. N.N.E.	40.4
S. 1/4 post sec. 24	Shiner in P.P. S.E.	41.1
Liberty Twp.	Shiner in 10' sycamore S.S.W.	37.0
1/2 mile W. of U.S. 25 #68	N.E. cor. House fdn. S.W.	^{101.55} 101.5
$\Delta = 0^\circ - 06' Rt$	Shiner in 6" maple S.S.W.	47.2
Stone with iron bolt - P.K. & shiner		
on top.		

(25)

#166

Note!

For S.E. cor. sec. 24	Shiner in T.P. N.E.	47.4
Liberty Twp. sec	Shiner in P.P. S.W.	49.3
#284 S. 1/4 20 sec. E.	X on E. pt Hdwl. W.N.W.	51.2
& U.S. #25 & SE #281	Conc. P/W. mon. S.E.	69.8

(26)