

O.D.O.T. DISTRICT 2 SURVEY OFFICE (USE ONLY)

PERSONNEL

REFERENCE NO. 27

SHEET 15 OF 36

NOTES NIESE

DATE 12/8/22

ROUTE SR 281

H.C. AUBLE

WEATHER OVERCAST

COUNTY WOOD

R.C. MILLER

TEMP. 41°

TOWNSHIP LIBERTY

RHOADES

SECTION 24

DWG BY RHOADES PID 94340

T 4 N R 10 E

TYPE MONUMENT MAG NAIL

ON SURFACE - ~~BELOW~~ ON _____

OFFSET \odot PAVEMENT 2.2' ~~LT~~ : RT

- TO - EDGE PAVEMENT

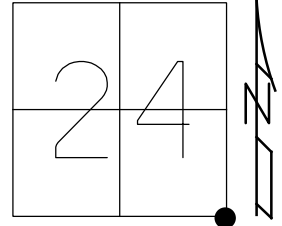
STATION: 639+09.47

HORIZ.DATUM: NAD83 2011

GEOID: NAVD88 2018

GRID: NORTHING: 590920.682

EASTING: 1652388.847



RECORD:
 FD BRASS MON
 FD P.K./WASHER
 6/5/90, CL
 4/12/01, TMR
 SET P.K./WASHER
 10-31-01, SAH
 FD P.K./WASHER
 5/25/04
 D.N.F
 SHOT CNTR TIES
 REF6
 5-30-18
 10-1-18, JFO
 FD MAG NAIL
 REF27
 7/1/19, JLL
 10/5/21, DSA
 SET MAG/WASHER
 12/8/22, DSA

NOTE: PORTAGE TWP
 N.W. COR SEC 30
 REF 6 SR 25

\odot SR 281



\odot S.B. SR 25

DIST.26-27= 22.92'

\odot N.B. SR 25

26



SET SHI
 SIGN
 POST

FD SHI
 BRACE POST

64.96'

75.79'

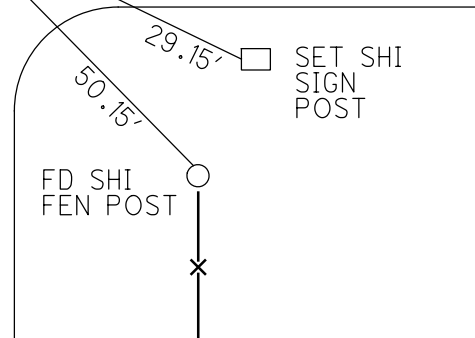
\odot SR 281

SET SHI
 SIGN
 POST

29.15'

50.15'

FD SHI
 FEN POST



O.D.O.T. DISTRICT 2 SURVEY OFFICE (USE ONLY)

PERSONNEL

REFERENCE NO. 27

SHEET 15.5 OF 36

NOTES RHOADES DATE 5/30/18
 H.C. O'DONNELL WEATHER CLOUDY
 R.C. TRENKA TEMP. 77°

ROUTE SR 281
 COUNTY WOOD
 TOWNSHIP LIBERTY
 SECTION 24

DWG BY MILLER PID NO PID

T 4 N R 10 E

TYPE MONUMENT CNPT

ON SURFACE - ~~BELOW~~ ON

OFFSET \varnothing PAVEMENT 2.2' ~~LT~~ : RT

- TO - EDGE PAVEMENT

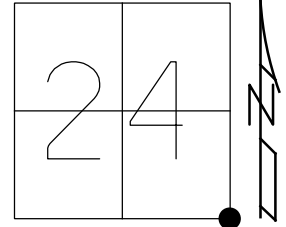
STATION: 639+72

HORZ. DATUM: NAD83(2011)

GEOID: NAVD88 2012A

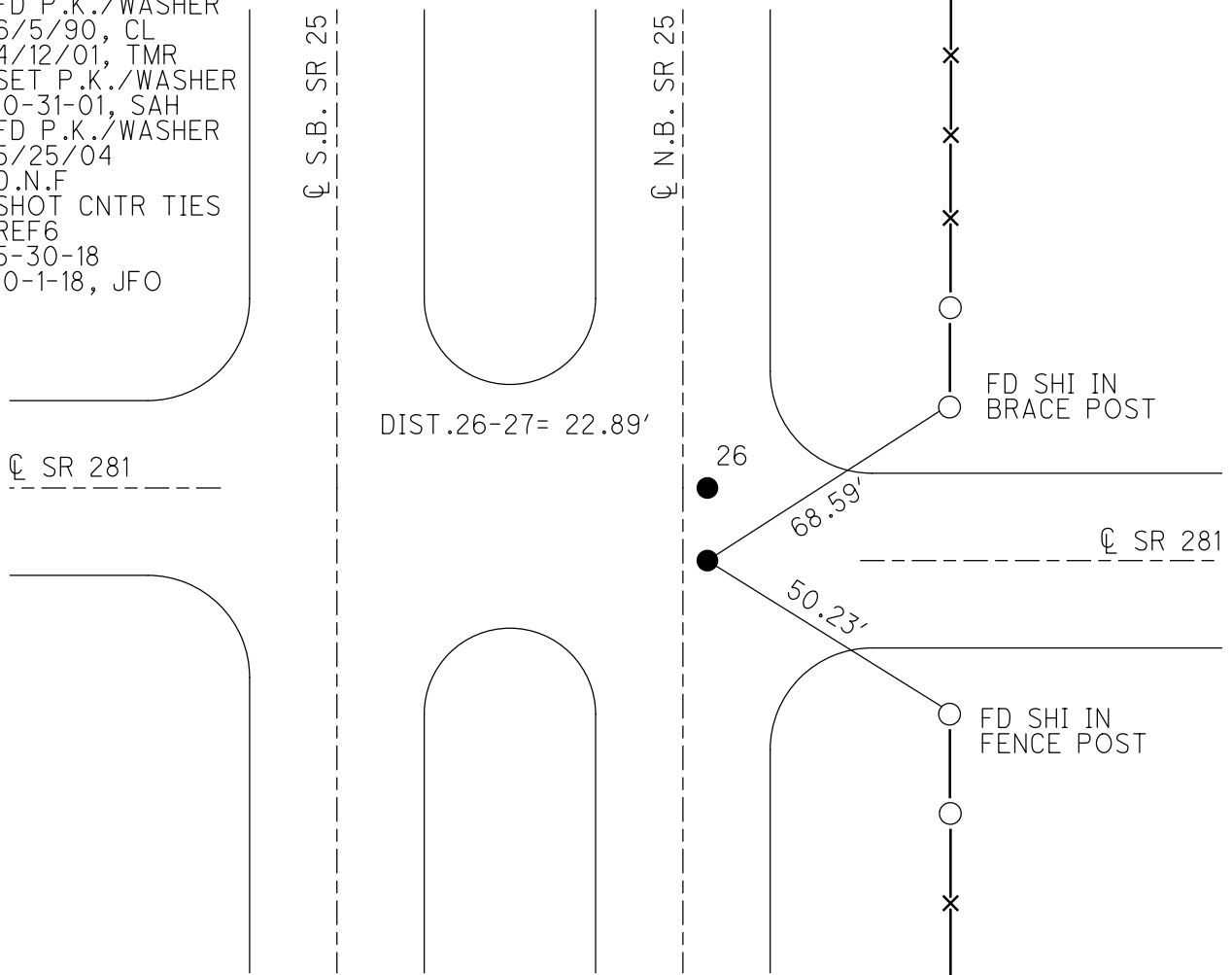
GRID: NORTHING: 590920.741

EASTING: 1652388.770



RECORD:
 FD BRASS MON
 FD P.K./WASHER
 6/5/90, CL
 4/12/01, TMR
 SET P.K./WASHER
 10-31-01, SAH
 FD P.K./WASHER
 5/25/04
 D.N.F
 SHOT CNTR TIES
 REF6
 5-30-18
 10-1-18, JFO

NOTE: PORTAGE TWP
 N.W. COR SEC 30
 REF 6 SR 25



O.D.O.T. DISTRICT 2 SURVEY OFFICE (USE ONLY)

PERSONNEL

REFERENCE NO. 26 & 27

SHEET 15 OF 25

NOTES HOFFMAN

DATE 6-5-90

ROUTE S.R. 25 at S.R. 281

H.C. LOEHRKE

WEATHER CLEAR

COUNTY WOOD

R.C. BARNHISEL

TEMP. +68°

TOWNSHIP LIBERTY/PORTAGE

SECTION 19, 24, 25, 30

T 4 N R 10/11 E

TYPE MONUMENT P.K.'s/WASHER

ON SURFACE - ~~BELLOW~~ YES

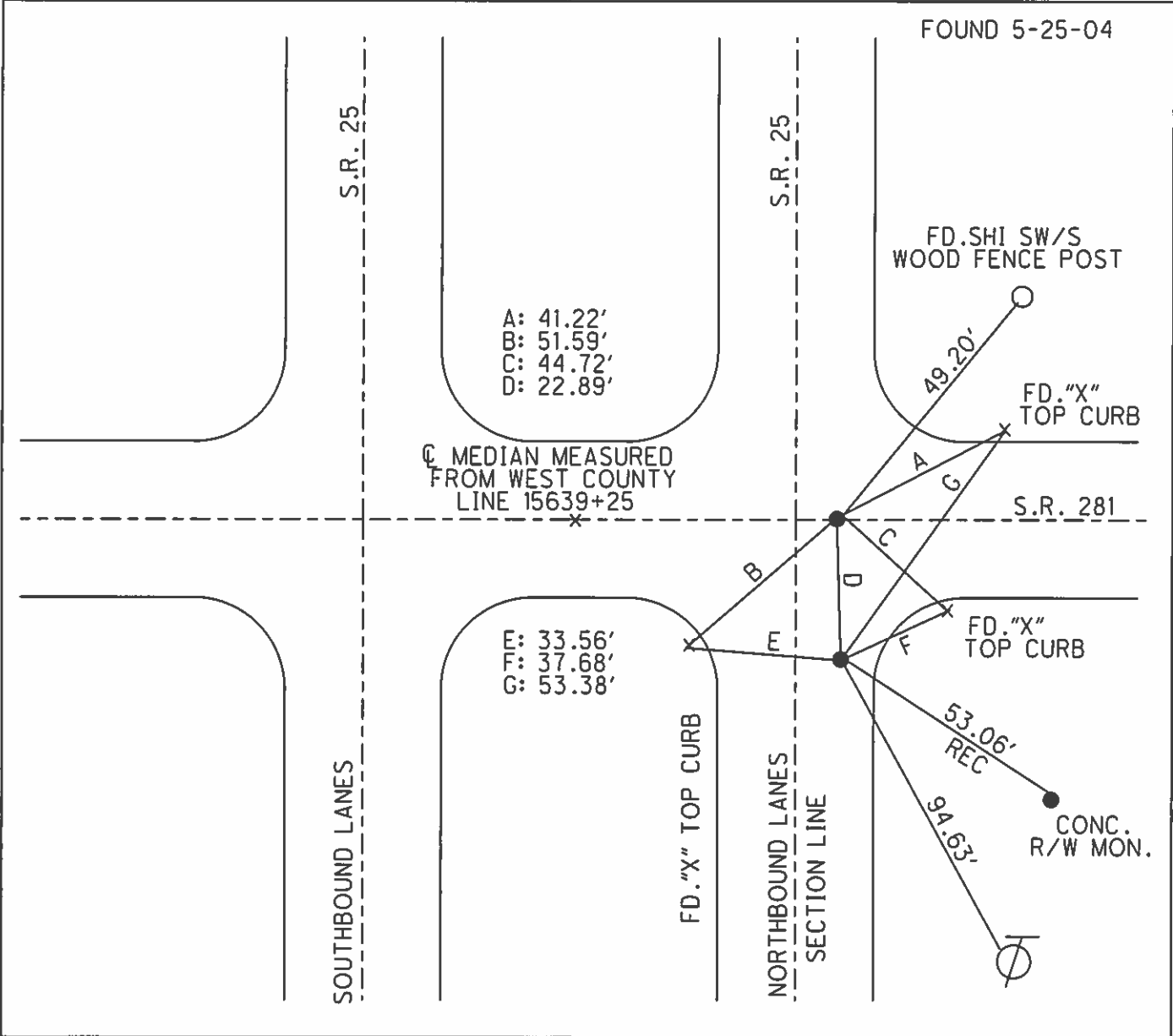
- ☉ PAV'T - RIGHT 2.2' (S.R. 25)

- TO - EDGE PAVEMENT

S.L.M. S.R. 281 = 639+50

Grid: Northing: _____ Easting: _____

24	19
LIBERTY TWP	PORTAGE TWP
25	30



O.D.O.T. DISTRICT 2 SURVEY OFFICE

PERSONNEL

REFERENCE NO. 26927

SHEET 1 OF 11

NOTES HOFFMAN

H.C. LOHRKE

DATE 6-5-90

ROUTE SR 25 at SR 281

R.C. BARNHISEL

WEATHER CLEAR

COUNTY WOOD

TEMP. 68°

TOWNSHIP LIBERTY-PORTAGE

SECTION 24 - 19

T A N R 10/11 E

TYPE MONUMENT P.K.'S/WASHER

ON SURFACE - BELOW YES

LEFT - C PAV'T. - RIGHT 2.2 of SR 25

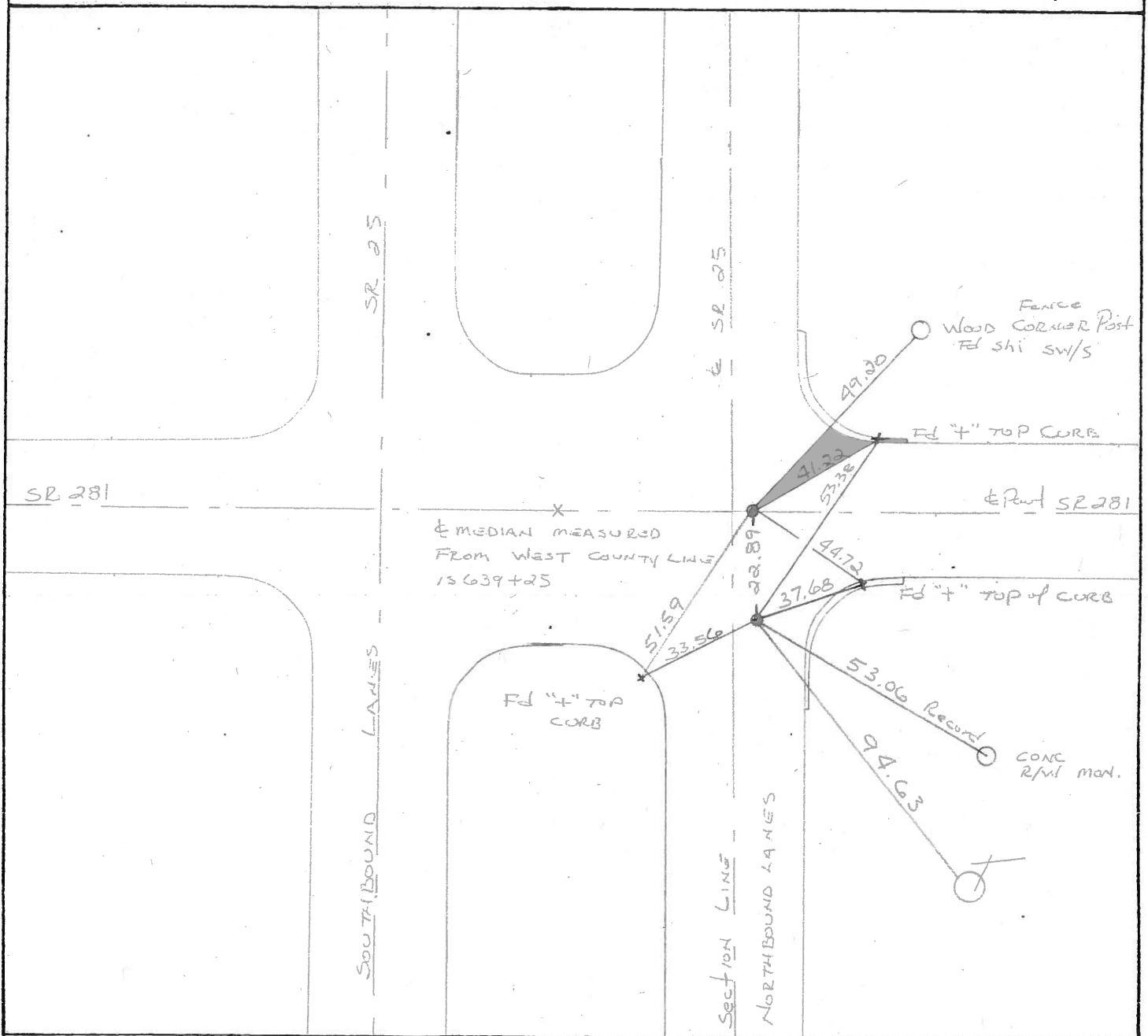
TO EDGE PAVEMENT

S.L.M. SR 281 = 639 + 50

24	19
25	30

LIBERTY TWP

PORTAGE TWP



County Wood SR 281

Date 5-2-1979

Township Liberty & Portage

Weather Clear

Section SE Corner Sec. 24 SW Corner Sec. 19

Temp. 68°

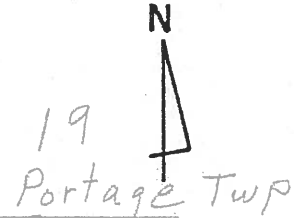
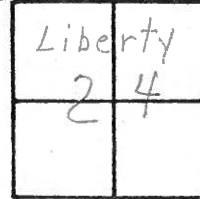
T4N, R10E

Liberty
Portage Twp.
T4N R10E

Personnel Smith

Knappe

Mead

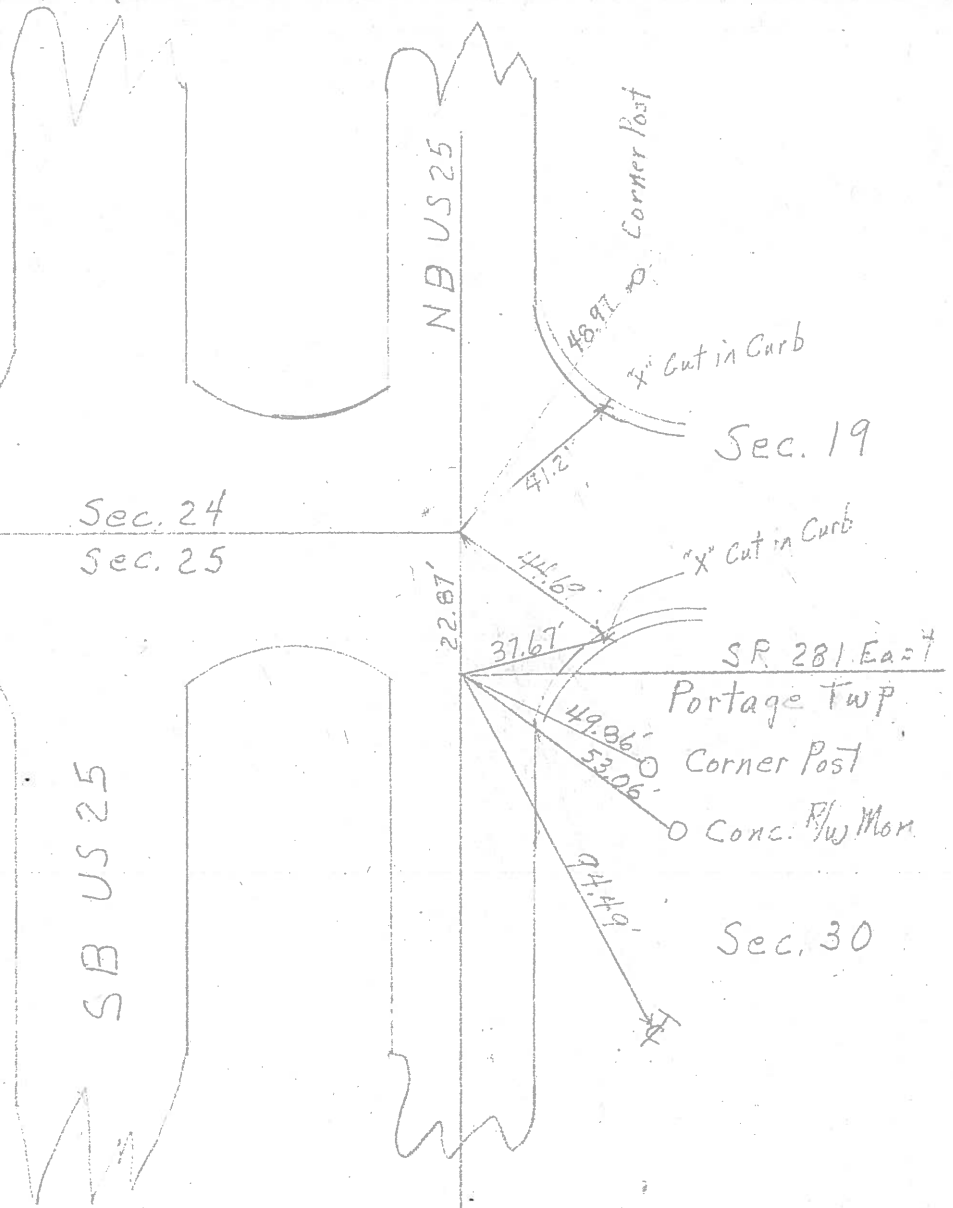


26 & 27

SR 281 West
Liberty Twp.

Sec. 24
Sec. 25

Fd. Brass Mobar Mon.
@ Surface 2'± East
of Center of NBL
US 25



Sec. 30

PERSONNEL	TITLE	PERSONNEL	TITLE	COUNTY	DATE
BURNSIDE				WOOD	
SMITH				#281 & 25	WEATHER
HOLCOMBE				SEC. 24 & 30	TEMP.
BOWERS					

DESCRIPTION _____ LEFT _____ CENTER LINE _____ RIGHT _____ JOB NO. _____

DESCRIPTION	LEFT	CENTER LINE	RIGHT	JOB NO.
STA. 429+61.95 = U.S. #25 S.E. COR. SEC. 24 LIBERTY TWP. BRASS MON.		* #27	SHI. IN END FENCE POST N.E. 48.18' SHI. IN T. POLE N.E. 50.34' FACE STEEL LIGHT POLE N.E. 40.22' 4" TOP CURB RADIUS E.S.E. 44.64' SHI. IN END FENCE POST S.E. 66.26' CONC. RW MON S.E. 70.20'	
NOTE: <u>22.84'</u> BETWEEN POINTS				
STA. 429+39.2 = U.S. #25 N.W. COR. SEC. 30 PORTAGE TWP. BRASS MON.		#26	SHI. IN END FENCE POST N.E. 65.74' SHI. IN T. POLE N.E. 67.20' FACE STEEL LIGHT POLE N.E. 59.91' 4" TOP CURB RADIUS E. 37.63' SHI. IN END FENCE POST S.E. 49.84' CONC. RW MON S.E. 53.10'	