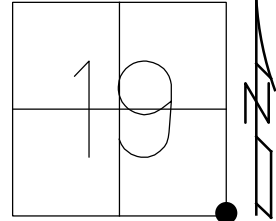


O.D.O.T. DISTRICT 2 SURVEY OFFICE (USE ONLY)

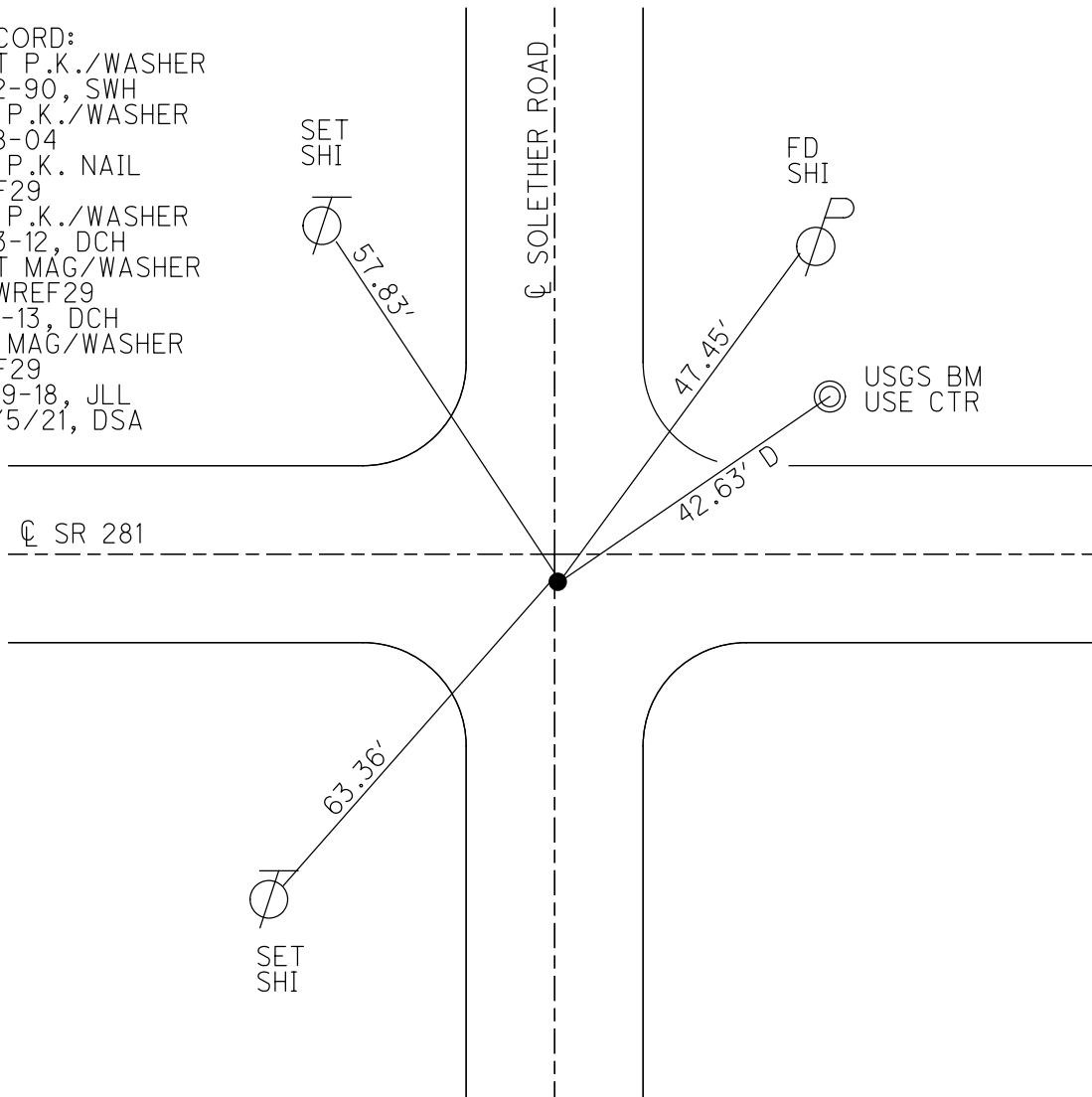
PERSONNEL _____ REFERENCE NO. 29 SHEET 20 OF 36
 NOTES NIESE DATE 10/5/21 ROUTE SR 281
 H.C. AUBLE WEATHER OVERCAST COUNTY WOOD
 R.C. NIESE TEMP. 66° TOWNSHIP PORTAGE
 DWG BY RHOADES PID 94340 SECTION 19
 T 4 N R 11 E

TYPE MONUMENT MAG/WASHER
 ON SURFACE - ~~BELOW~~ ON
 OFFSET \odot PAVEMENT 1.0' ~~±~~ : RT
 - TO - EDGE PAVEMENT
 STATION: 691+69.25



HORIZ. DATUM: NAD83 2011 GEOID: NAVD88 2012A
 GRID: NORTHING: 590704.042 EASTING: 1657644.165

RECORD:
 SET P.K./WASHER
 7-2-90, SWH
 FD P.K./WASHER
 7-8-04
 FD P.K. NAIL
 REF29
 FD P.K./WASHER
 7-3-12, DCH
 SET MAG/WASHER
 NEWREF29
 1-7-13, DCH
 FD MAG/WASHER
 REF29
 3-19-18, JLL
 10/5/21, DSA



O.D.O.T. DISTRICT 2 SURVEY OFFICE (USE ONLY)

PERSONNEL

REFERENCE NO. 29

SHEET 20 OF 27

NOTES HOMAN
 H.C. ROUSOS
 R.C. COUTCHER
HARBAUGH

DATE 7-3-12
 WEATHER CLOUDY
 TEMP. 85°

ROUTE SR 281
 COUNTY WOOD
 TOWNSHIP PORTAGE
 SECTION 19

DWG BY JAMES PID 97957

T 4 N R 11 E

TYPE MONUMENT P.K./WASHER

ON SURFACE - ~~BELOW~~ ON

OFFSET \varnothing PAVEMENT 1.0' ~~±~~ : RT

- TO - EDGE PAVEMENT

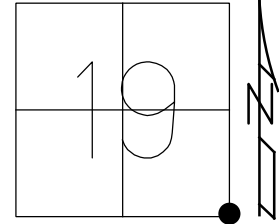
STATION: 693+79.20

HORZ.DATUM: NAD83 2011

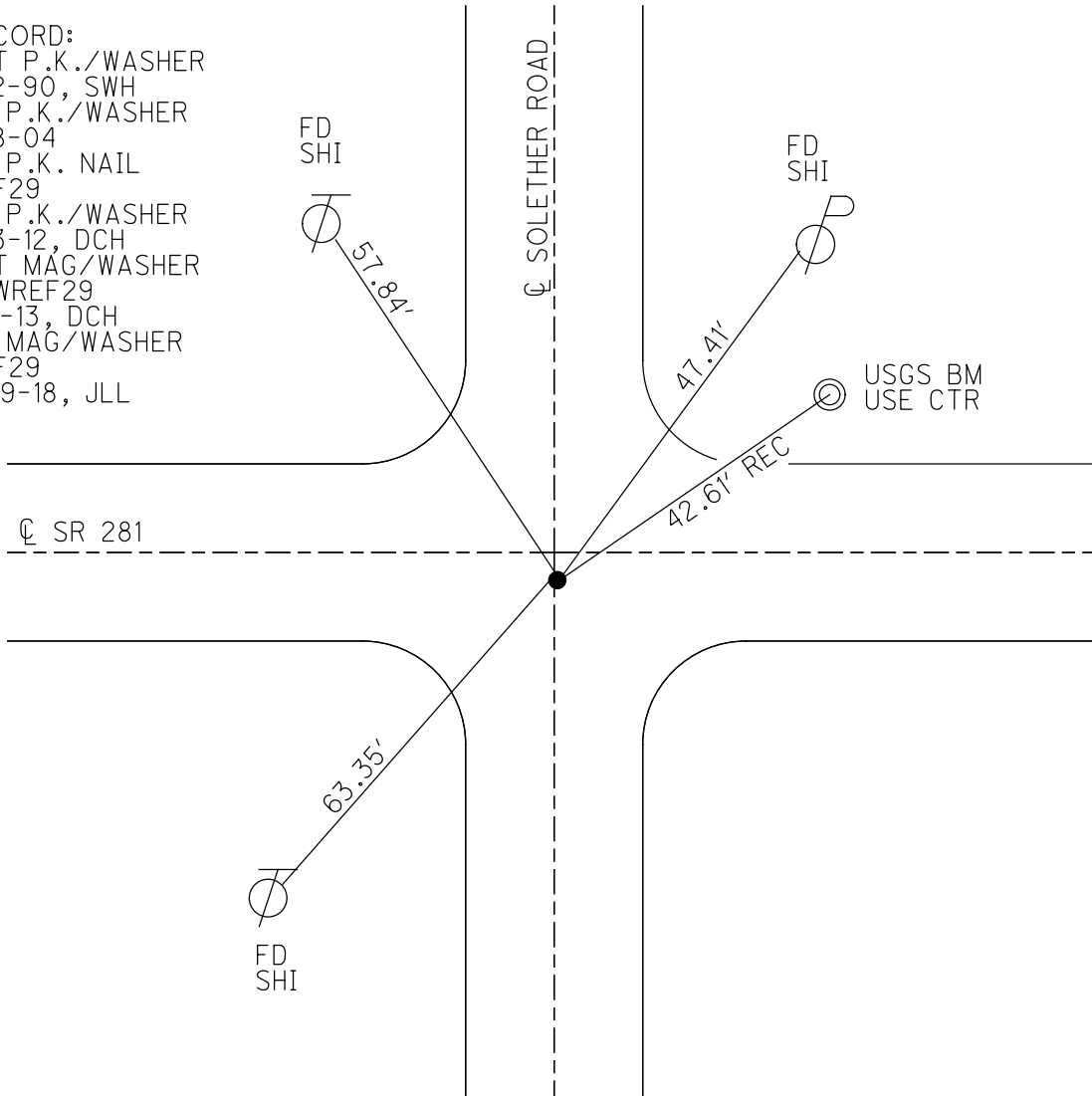
GEOID: NAVD88 2012A

GRID: NORTHING: 590704.042

EASTING: 1657644.165



RECORD:
 SET P.K./WASHER
 7-2-90, SWH
 FD P.K./WASHER
 7-8-04
 FD P.K. NAIL
 REF29
 FD P.K./WASHER
 7-3-12, DCH
 SET MAG/WASHER
 NEWREF29
 1-7-13, DCH
 FD MAG/WASHER
 REF29
 3-19-18, JLL



O.D.O.T. DISTRICT 2 SURVEY OFFICE (USE ONLY)

PERSONNEL

REFERENCE NO. 29

SHEET 20 OF 25

NOTES NUHFER

DATE 5-25-04

ROUTE S.R. 281

H.C. HOMAN

WEATHER CLEAR

COUNTY WOOD

R.C. ADKINS

TEMP. +68°

TOWNSHIP PORTAGE

SECTION 19

T 4 N R 11 E

TYPE MONUMENT P.K./WASHER

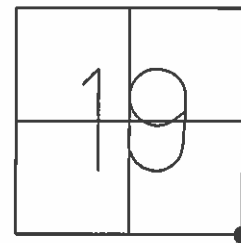
ON SURFACE - ~~BELOW~~ YES

~~|||||~~ - ☉ PAV'T - RIGHT 1.0'

- TO - EDGE PAVEMENT

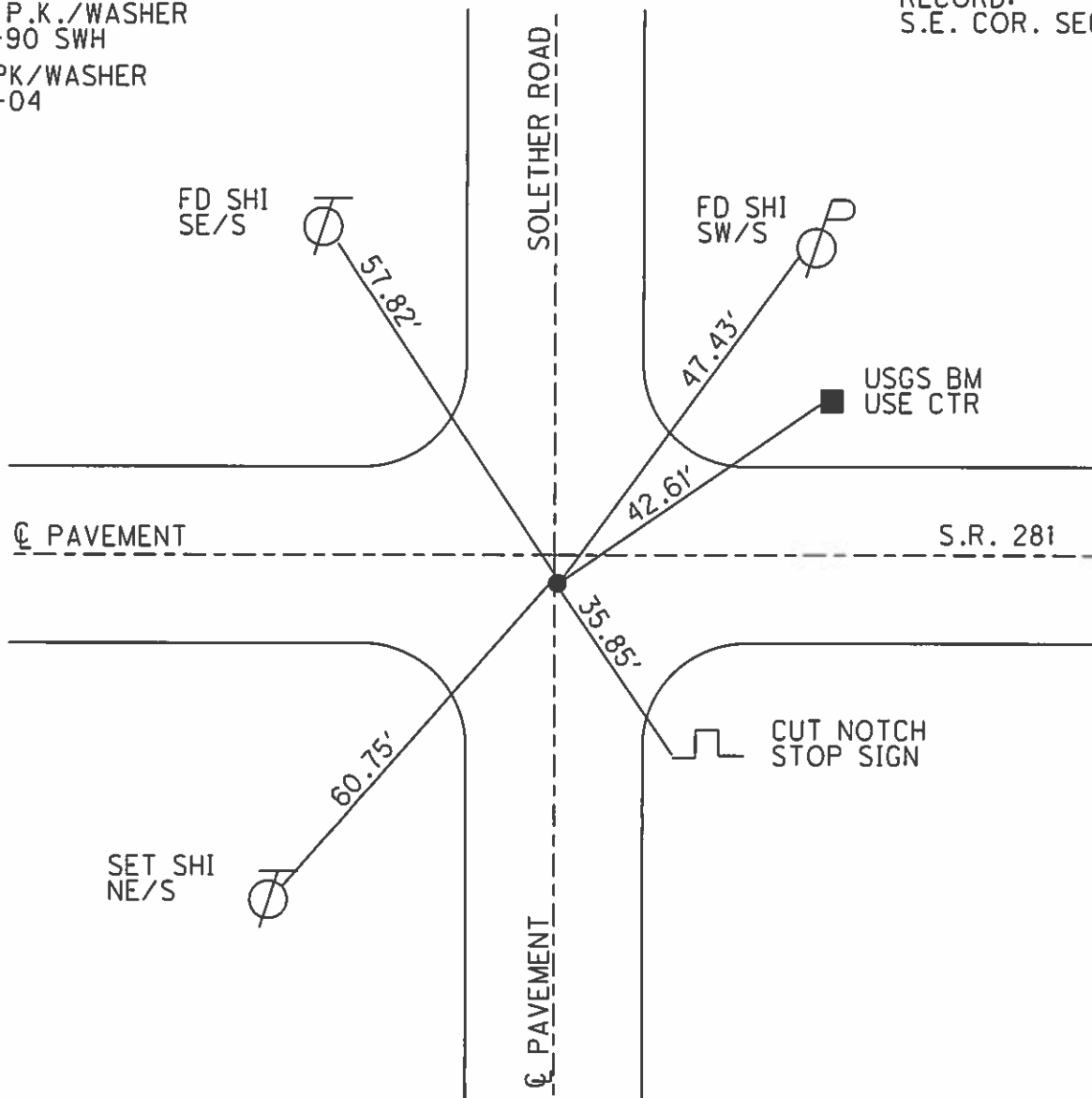
S.L.M. 692+14

Grid: Northing: _____ Easting: _____



SET P.K./WASHER
7-2-90 SWH
FD PK/WASHER
7-8-04
RGN

RECORD:
S.E. COR. SEC. 19



O.D.O.T. DISTRICT 2 SURVEY OFFICE

PERSONNEL

REFERENCE NO. 29

SHEET 6 OF 11

NOTES HOFFMAN

H.C. LOHRKE

R.G. BARWISSEL

DATE 6-5-90

WEATHER CLEAR

TEMP. 68°

ROUTE SR 281

COUNTY WOOD

TOWNSHIP PORTAGE

SECTION 19

T4 NR 11 E

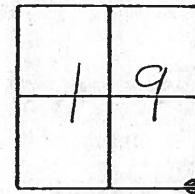
TYPE MONUMENT P.K. / WASHER

ON SURFACE - BELOW YES

LEFT - C PAV'T. - RIGHT 1.0'

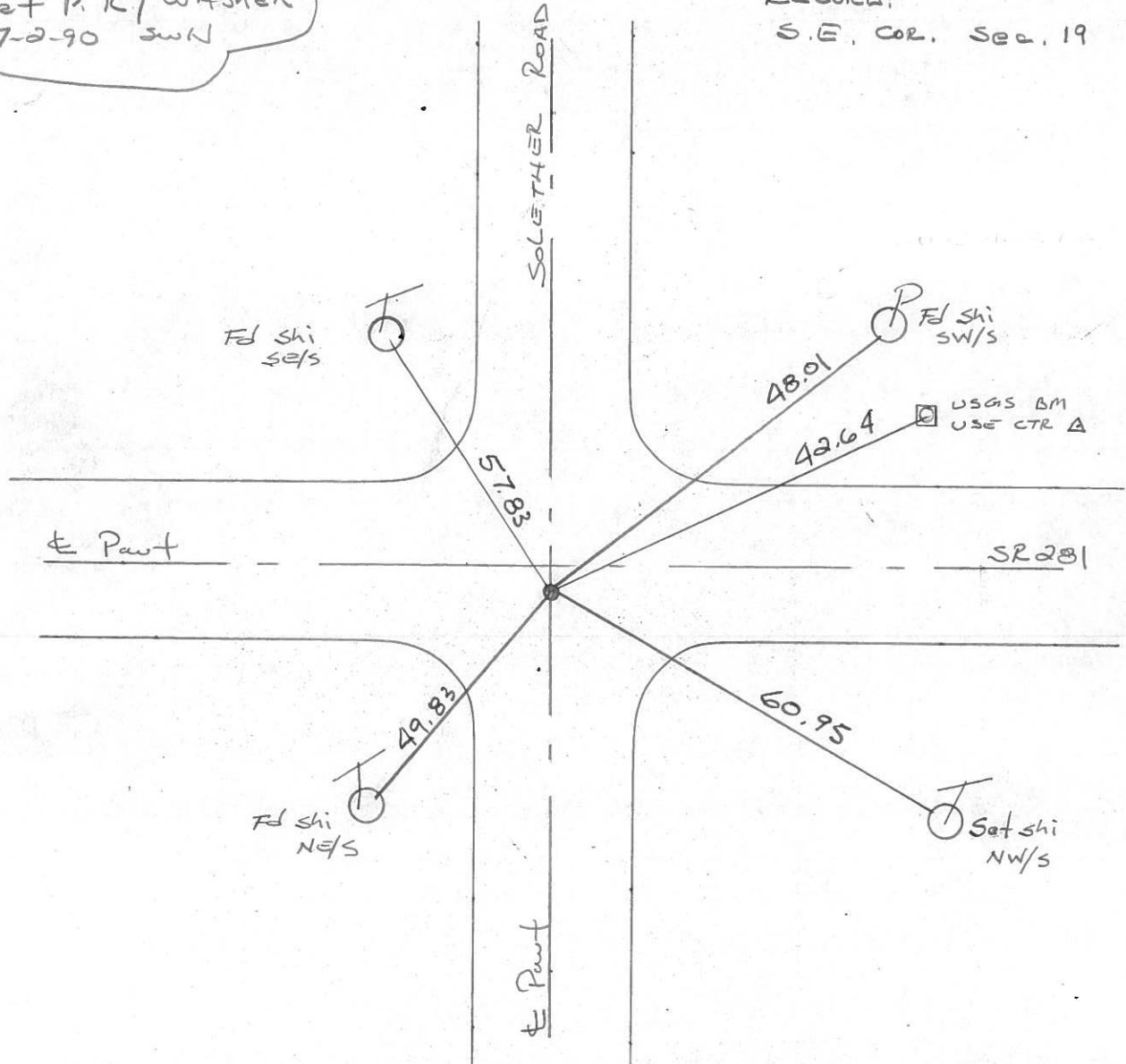
TO EDGE PAVEMENT

S.L.M. 692 + 14



Set P.K. / WASHER
7-2-90 SWN

RECORD:
S.E. COR. Sec. 19



Q.D.O.T. DISTRICT 2 SURVEY OFFICE

SHEET _____ OF _____

County WOOD S.R. 281

Date MARCH 28, 83

Township PORTAGE

Weather OVERCAST - WINDY

Section 19

Temp. +30°

T4N, R1E

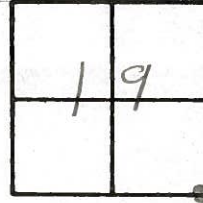
Personnel Hoffman

LOHRKE

HOUSEHOLDER

BARNHISEL

#29

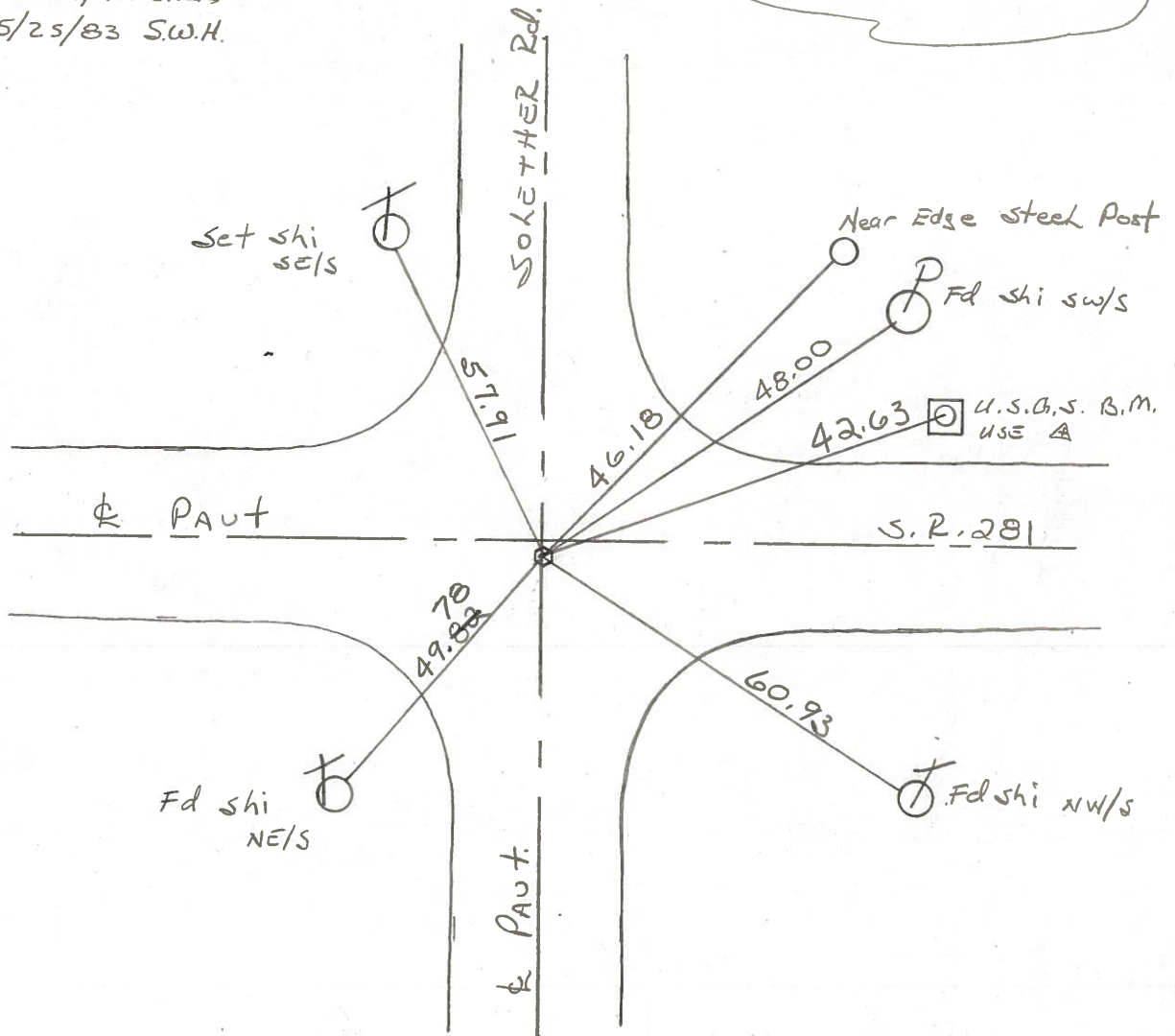


Fd Boat spike @ surface
0.8' Rt of & PAUT SR 281
ON & PAUT SOLETHER Rd.

SLM 692+61

Record:
S.F. COZ. Sec. 19

SET P.K./WASHER
5/25/83 S.W.H.



RE COPIED
1-26-71

PERSONNEL	TITLE	PERSONNEL	TITLE	COUNTY	DATE
CK. BY				WOOD	OK-7-24-69
SILVESTER				S. R. #281	WEATHER
BURNSIDE				SEC. 19 & 20	TEMP.
SMITH					

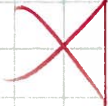



DESCRIPTION	LEFT	CENTER LINE	RIGHT	JOB NO.
-------------	------	-------------	-------	---------

STA. 78+86.0 S. 1/4 Post SEC. 20 = N 1/4 Sec 29 PORTAGE TWP. A = 0° - 22' - 30" RT. "STONE" - R.R. Spk. 2nd surface #169 Bell cut + sawdust Rin	#30 ✓ 30.59 29.35 38.58	36.21	SHINER IN T. POLE S.W. 36.10' SHINER IN CABLE POLE N.W. 29.43 1" IN 6" STEEL COR. POST S.E. 34.82 SHINER IN P. POLE N.E. 30.56 FACE 6" STEEL BR. POST E.S.E. 38.06 LF & 3.9 N.Y. 5.9 SHP 12.3 SLM 718+04 F pole loose	
SEC. 19 = NW cor. Sec 29 PORTAGE TWP. R.R. Spk. SOLEATHER ROAD 692+6 #168	#29 ✓ 57.91 49.82	46.18 48.00	SHINER 12" CHERRY N.E. 51.43' SHINER P. POLE S.W. 43.55' CONC. MON. S.E. 51.32' U.S.G.S. MON. N.E. 42.63 46.18 FACE IRON COR. POST N.E. 46.62 48.00 SHINER IN T. POLE E.S.E. 60.94 SHINER IN T. POLE S.S.W. 49.86 SHINER IN T. POLE N.N.W. 55.98 0.8 RT & 281	

RE COPIED
1-26-71

PERSONNEL TITLE PERSONNEL TITLE COUNTY WOOD DATE OK-7-24-69
 CK. BY _____ S. R. #281 WEATHER _____
SILVESTER _____ SEC. 19 & 20 TEMP. _____
BURNSIDE _____
SMITH _____

DESCRIPTION CONTROL TIES JOB NO. _____
 LEFT CENTER LINE RIGHT

LEFT	CENTER LINE	RIGHT
STA. 78+86.0 S. 1/4 Post SEC. 20 = N. 1/4 Sec 29 PORTAGE TWP. Δ = 0°-22'-30" RT. "STONE" - R.R. Spk. #169	 	SHINER IN T. POLE S.W. 36.10' SHINER IN CABLE POLE N.W. 29.43' "X" IN 6" STEEL COR. POST S.E. 34.82' SHINER IN P. POLE N.E. 30.56' FACE 6" STEEL BR. POST E.S.E. 38.06'
S.E. COR. SEC. 19 = NW COR SEC 29 PORTAGE TWP. R.R. Spk. SOLETHOR ROAD #168	 	SHINER 12" CHERRY N.E. 51.43' SHINER P. POLE S.W. 43.55' CONC. MON. S.E. 51.32' U.S.G.S. MON. N.E. 42.62' FACE IRON COR. POST N.E. 46.62' SHINER IN T. POLE E.S.E. 60.91' SHINER IN T. POLE S.S.W. 49.86' SHINER IN T. POLE N.N.W. 55.98'

PERSONNEL TITLE PERSONNEL TITLE

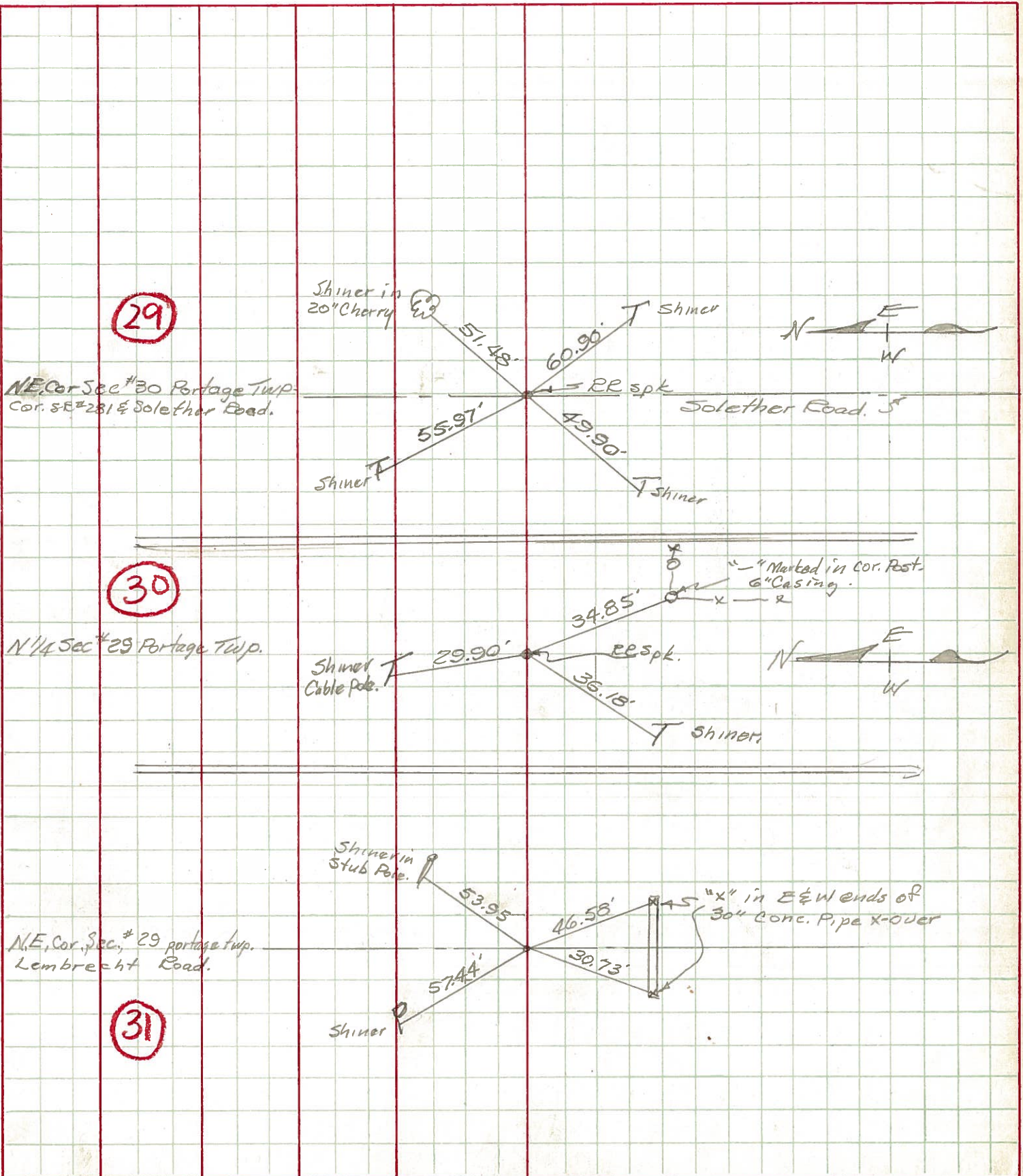
COUNTY Wood. DATE April 28, 1969

S. R. #281 WEATHER Cloudy.

SEC. Dixie East. TEMP. +70°

DESCRIPTION Ties to Control Points JOB NO. _____

LEFT CENTER LINE RIGHT



PERSONNEL	TITLE	PERSONNEL	TITLE	COUNTY	DATE
				Wood	OK 12-5-57
				S. R. #281	3-29-60
				SEC. H, I, B & A.	WEATHER SWOBBEN 8-24-62 MORRISON
					TEMP. 10-31-62

DESCRIPTION	LEFT	CENTER LINE	RIGHT	JOB NO.
				Silvester 2-28-64

Resurfaced 10-62

No. 167

S.E. cor. sec. 19 Portage			Shiner 12" cherry	N.E.	51.55
S.E. #281 & so leather. Ed.			Power Pole	S.W.	43.56
R.R. spike - Iron Pin Fd. OK			Conc. mon.	S.E.	51.32' 51.28
Set. R.R. Spk. 11-1-62			U.S.G.S. man.	N.E.	42.62
(29) #168			Face iron Cor. post	N.E.	46.62 46.69
			Shiner in T. Pole	E.S.E.	60.91
			Shiner in T. Pole	S.S.W.	43.53

Sta. 78+86.0

S. 1/4 post sec. 20 Portage			Shiner in T.P.	S.W.	36.10'
Twp. Stone - R.R. Spk. set 11/1/62			Cable pole	N.W.	29.43
Δ = 0°-22 1/2' Rt.			X in 6" steel cor. post	S.E.	34.82' 34.86
(30) #169			Shiner in P.P.	N.E.	30.56
			Face of 6" steel Br. post	S.S.E.	38.12
				E.S.E.	38.04

Sta. 104+85.9

S.W. cor. sec. 21 Portage OK			P. Pole	N.W.	36.42
Twp. set. R.R. spk. over stone 11-1-62			Br. Pole	N.E.	47.75' 47.70
Δ = 10°-20' Rt.			S.W. cor. S.W. Hdwl.	S.W.	32.15
Lembrecht Rd Iron Pin 4" below Part.			S.E. cor. S.E. Hdwl.	S.E.	31.60
(31) #170			Shiner in P.P.	S.W.	42.15' 42.20