

O.D.O.T. DISTRICT 2 SURVEY OFFICE (USE ONLY)

PERSONNEL

REFERENCE NO. 30

SHEET 21 OF 25

NOTES NUHFER

DATE 5-25-04

ROUTE S.R. 281

H.C. HOMAN

WEATHER CLEAR

COUNTY WOOD

R.C. ADKINS

TEMP. +68°

TOWNSHIP PORTAGE

SECTION 20

T 4 N R 11 E

TYPE MONUMENT P.K./WASHER

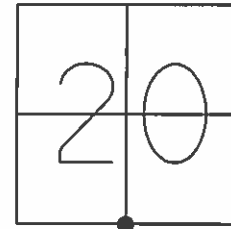
ON SURFACE - ~~BELOW~~ YES

LEFT - ☉ PAV'T ~~RIGHT~~ 2.7'

13.6' TO RT. EDGE PAVEMENT

S.L.M. 718+62

Grid: Northing: \_\_\_\_\_ Easting: \_\_\_\_\_

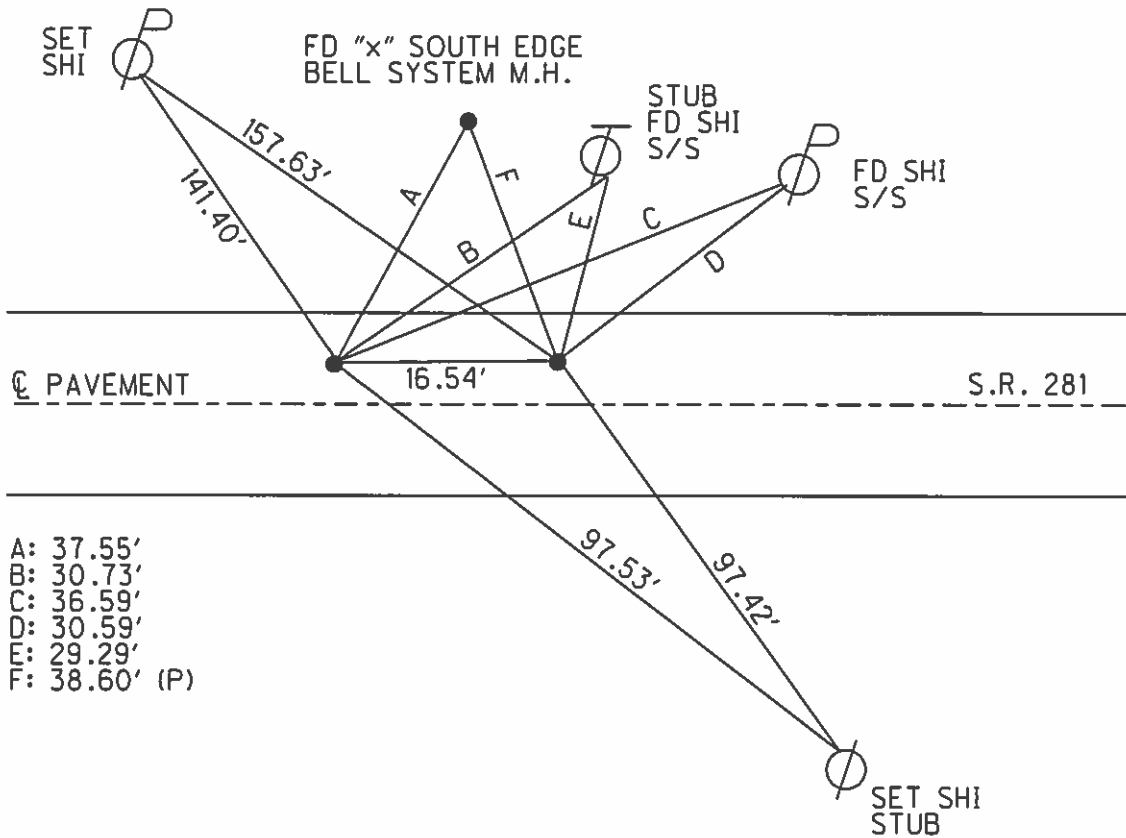


SET P.K./WASHER  
7-2-90 SWH

FD PK/WASHER AND PK  
RGN  
7-8-04

RECORD:

STA 78+86.0  
SV4 POST SEC. 20  
DELTA = 0°-22'-30" RT.  
STONE - R.R. SPIKE



- A: 37.55'
- B: 30.73'
- C: 36.59'
- D: 30.59'
- E: 29.29'
- F: 38.60' (P)

# O.D.O.T. DISTRICT 2 SURVEY OFFICE

PERSONNEL

REFERENCE NO. 30

SHEET 7 OF 11

NOTES HOFFMAN

H.C. LOEHRKE

DATE 6-5-90

ROUTE SR 281

R.C. BARNHISEL

WEATHER CLEAR

COUNTY WOOD

TEMP. 68°

TOWNSHIP PORTAGE

SECTION 20

T 4 N R 11 E

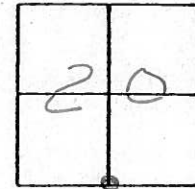
TYPE MONUMENT P.K./WASHER

ON SURFACE - BELOW YES

LEFT - C PAV'T. - RIGHT 3.1

7.5 TO LT. EDGE PAVEMENT

S.L.M. 718 +62



Set P.K./WASHER  
7-2-90 SWA

RECORD:  
Sta. 78+86.0  
S/4 Post Sec. 20  
 $\Delta = 0^\circ - 22' - 30''$  Rt.  
Stake - R.R. SPR

