

# O.D.O.T. DISTRICT 2 SURVEY OFFICE (USE ONLY)

PERSONNEL

REFERENCE NO. 30AA

SHEET 22 OF 36

NOTES PRESTON-COLVIN  
 H.C. ASTON  
 R.C. NEISE

DATE 8/2/24  
 WEATHER CLOUDY  
 TEMP. 73°

ROUTE SR 281  
 COUNTY WOOD  
 TOWNSHIP PORTAGE  
 SECTION 20  
 T 4 N R 11 E

DWG BY PRESTON-COLVIN PID CHIP SEAL

TYPE MONUMENT SHANK

ON SURFACE - ~~BELOW~~ ON

OFFSET  $\text{C}$  PAVEMENT 2.7' LT : ~~RT~~  
13.6' TO RT. EDGE PAVEMENT

STATION: 718+78.61

HORZ. DATUM: NAD83 2011

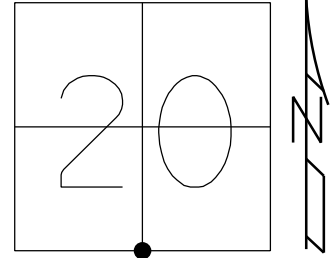
GEOID: NAVD88 2018

GRID: NORTHING: 590687.234

EASTING: 1660250.213

LDP: NORTHING: 412633.18

EASTING: 171862.64



SET P.K./WASHER  
 7-2-90, SWH

FD PK/WASHER  
 7-8-04, RGN

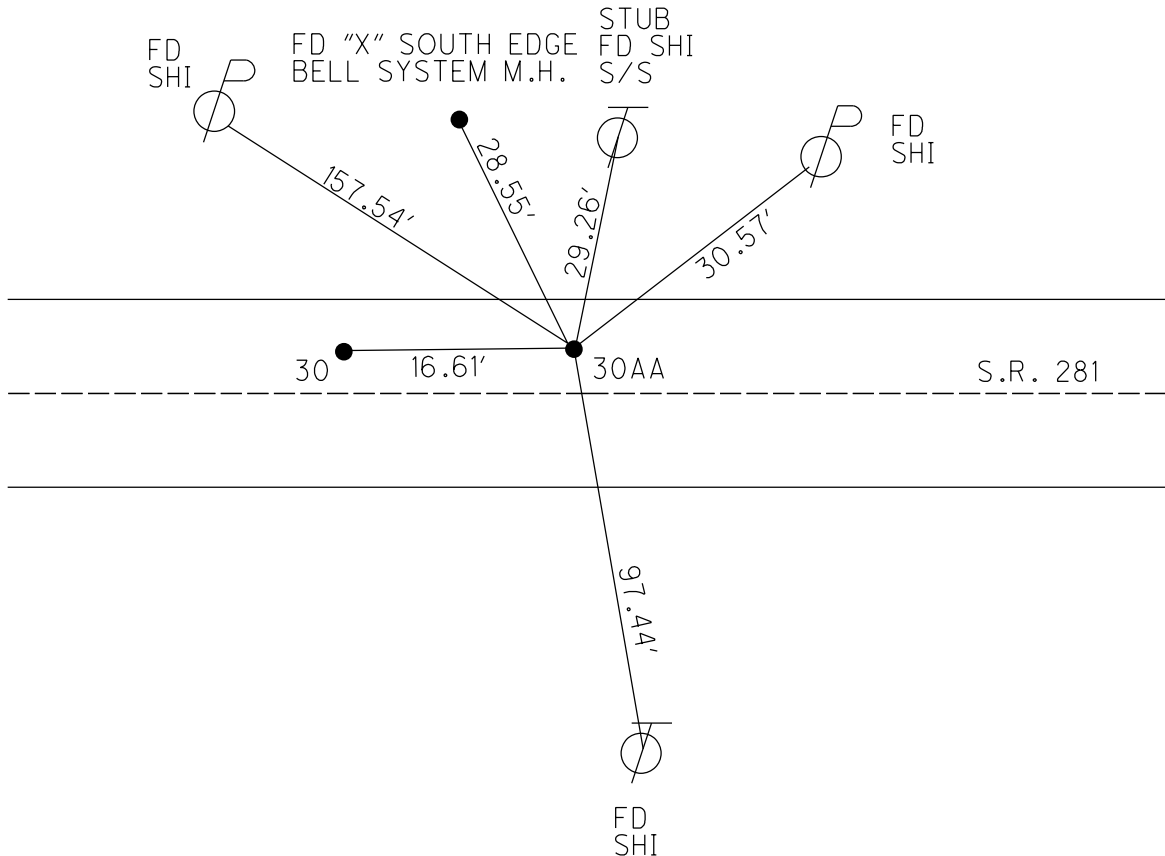
FD P.K.NAIL  
 GPS, REF31

SET MAG/WASHER  
 GPS, NEWREF31  
 1/7/13, DCH

FD SHANK  
 REF30AA  
 8-2-24, TDN

SET MAG/WASHER  
 REF30AA  
 10-4-24, TDN

RECORD:  
 STA 78+86.0  
 SV4 POST SEC. 20  
 DELTA = 0°-22'-30" RT.  
 STONE - R.R. SPIKE



FD SHI

FD SHI