

O.D.O.T. DISTRICT 2 SURVEY OFFICE (USE ONLY)

PERSONNEL

REFERENCE NO. 32

SHEET 24 OF 25

NOTES NUHFER

DATE 5-25-04

ROUTE S.R. 281

H.C. HOMAN

WEATHER CLEAR/CLOUDY

COUNTY WOOD

R.C. ADKINS

TEMP. +68°

TOWNSHIP PORTAGE

SECTION 21

T 4 N R 11 E

TYPE MONUMENT P.K./WASHER

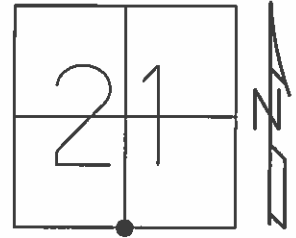
ON SURFACE -  YES

 - ☉ PAV'T - RIGHT 0.2'

10.8' TO RT. EDGE PAVEMENT

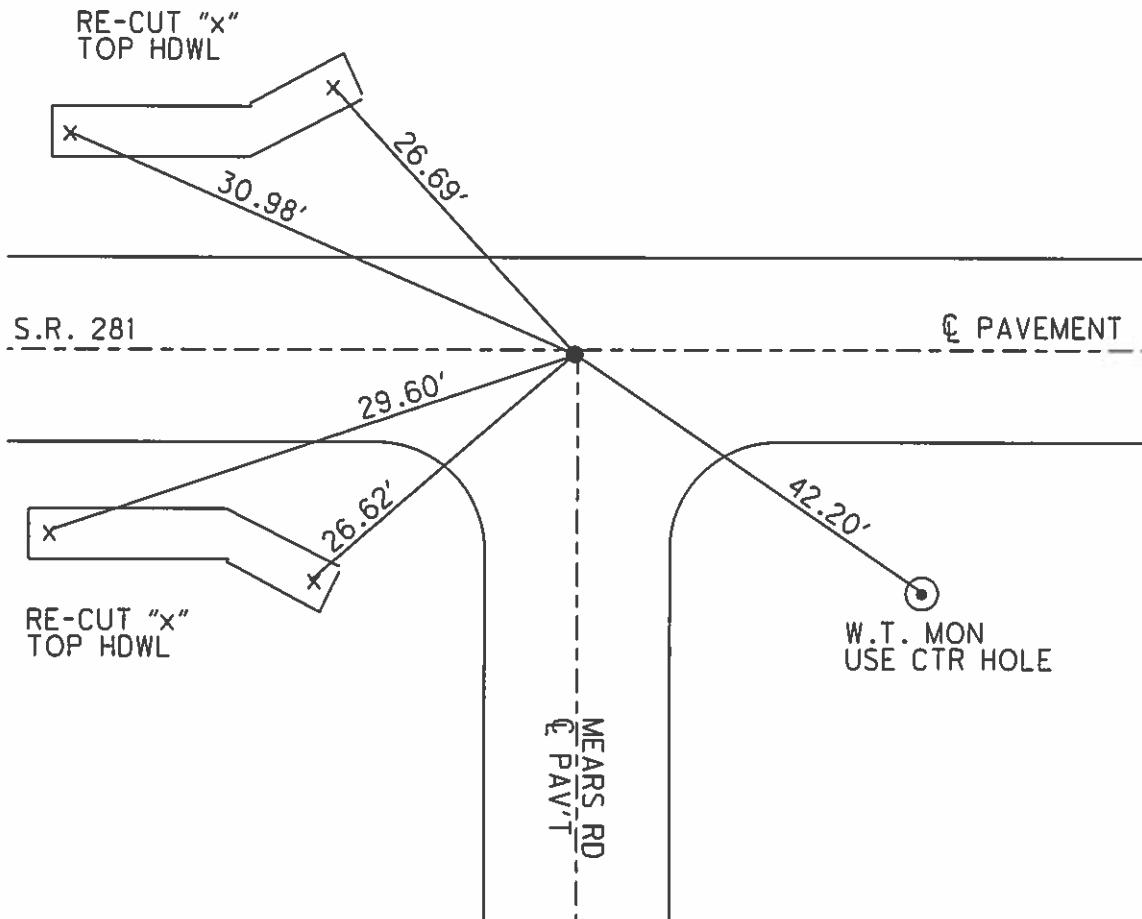
S.L.M. 770+75

Grid: Northing: _____ Easting: _____



SET P.K./WASHER
7-2-90 SWH
FD P.K./WASHER
MICROSURFACE
RGN 7-8-04

RECORD:
STA 131+23.3
SV4 POST SEC 21
R.R. SPIKE
DELTA = 0°-16' LT.



O.D.O.T. DISTRICT 2 SURVEY OFFICE

PERSONNEL

REFERENCE NO. 32

SHEET 10 OF 11

NOTES HOFFMAN

H.C. LOGHURKE

R.C. BARNHISEL

DATE 6-5-90

WEATHER CLEAR

TEMP. 68°

ROUTE SR 281

COUNTY WOOD

TOWNSHIP PORTAGE

SECTION 21

T. 4 N. R. 11 E.

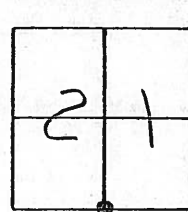
TYPE MONUMENT P.K. / WASHER

ON SURFACE - BELOW YES

LEFT - & PAV'T. - RIGHT YES

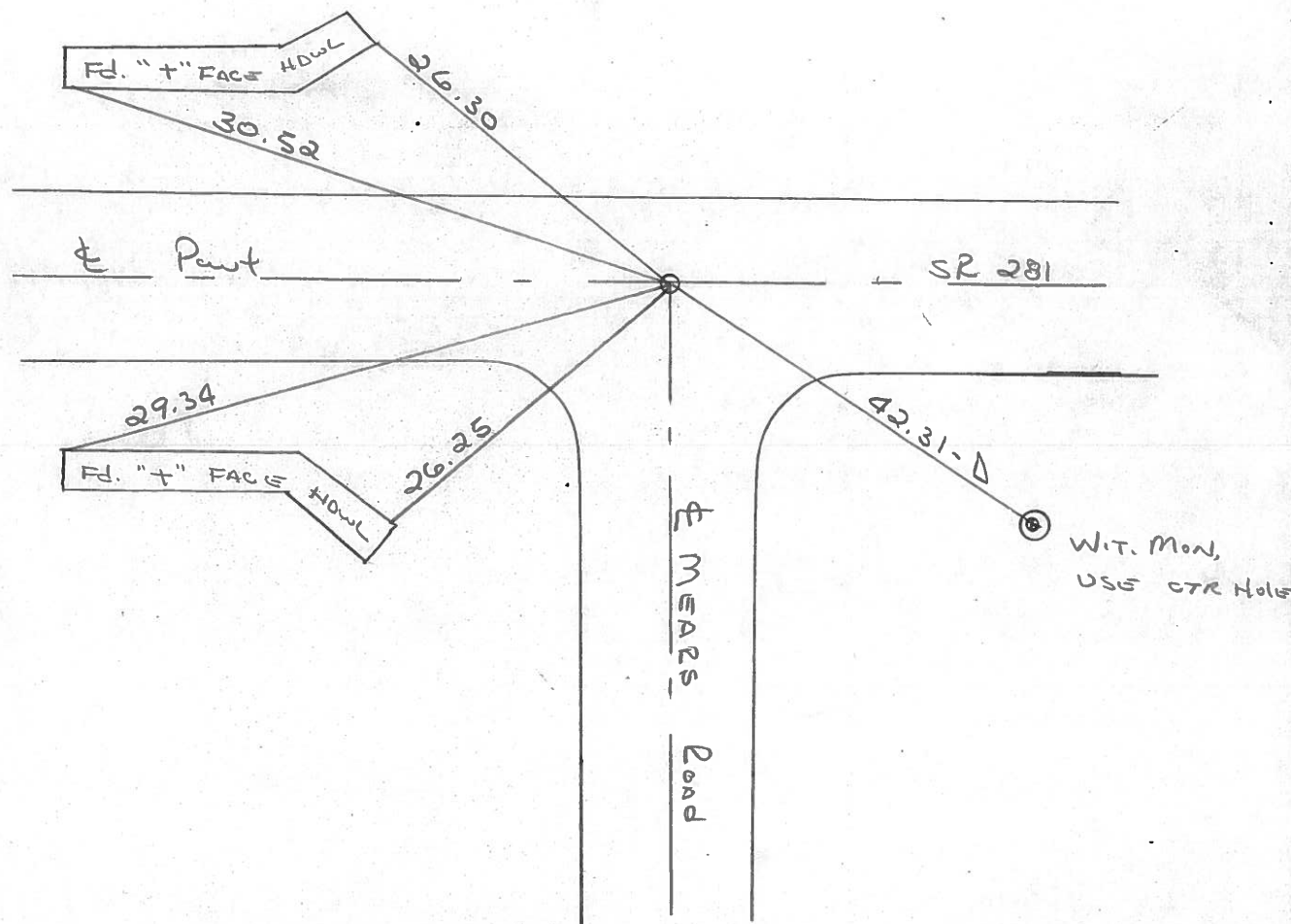
10.0 TO RT EDGE PAVEMENT

S.L.M. 770 + 75



Set P.K. / WASHER
7-2-90 SWA

RECORD:
Sta. 131 + 23.3
3/4 Post Sec 21
R.R. SPK.
 $\Delta = 0^\circ - 16' Lt.$



County Wood S.R. 281

Date April 7, 83

Township PORTAGE

Weather RAIN

Section 21

Temp. +45°

T4N, R11E

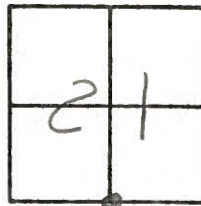
Personnel HOFFMAN

HOUSEHOLDER

LOEHRKE

BARNHISEL

#32



Fd BOAT SPK @ SURFACE

0.5' RT of & PAUT

9.9' TO N.E.P.

9.0' TO S.E.P.

SET P.K./WASHER

5/25/83

S.W.H.

SLM 771+23

Record:

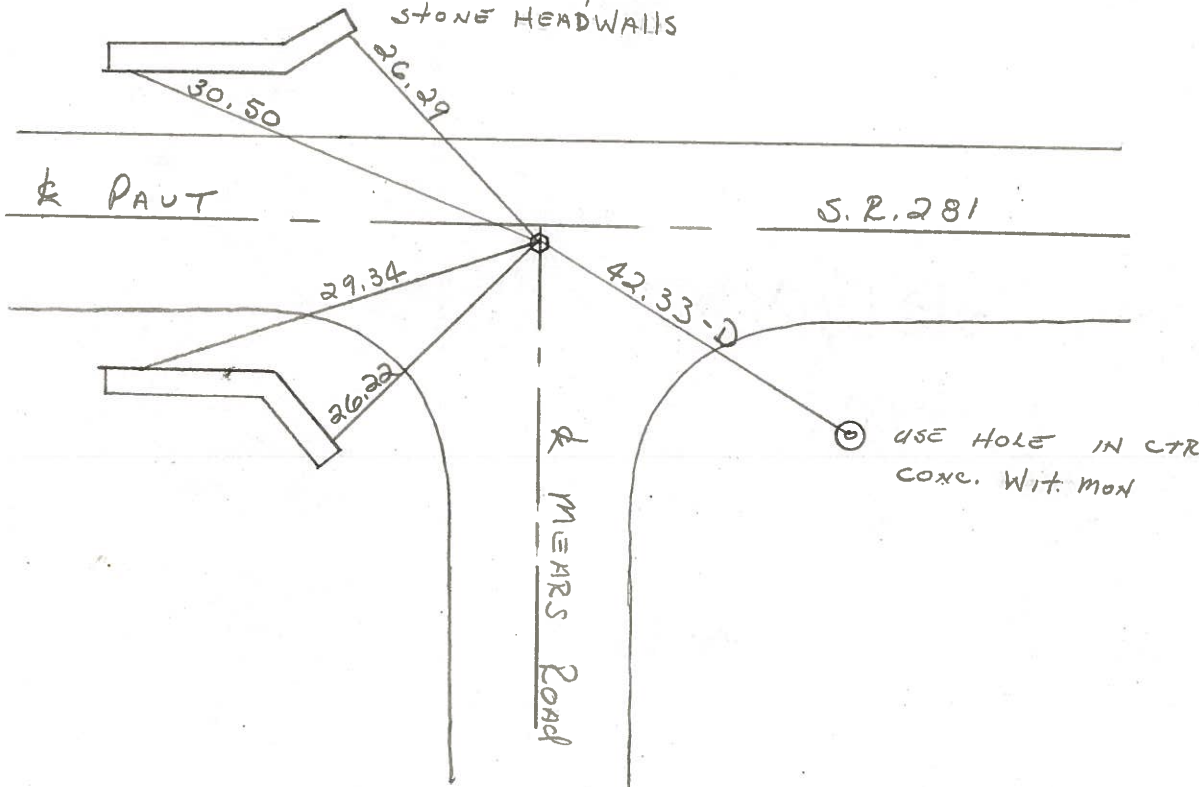
STA. 131+23.3

S 1/4 Post sec 21

RR SPK

Δ = 0° - 16' Lt.

Fd 4 "t"s CUT IN FACE of
STONE HEADWALLS



PERSONNEL	TITLE	PERSONNEL	TITLE	COUNTY	DATE	WEATHER	TEMP.
Ch. B. J.				WOOD	OK-8-11-69		
SILVESTER				S. R. #281			
BURNSIDE				SEC. 21			
SMITH							

DESCRIPTION CONTROL TIES LEFT CENTER LINE RIGHT JOB NO.

STA. 131+23.3
 S 1/4 Post Sec. 21
 PORTAGE TWP.
 R.R. Spt.
 $\Delta = 0^\circ - 16' \text{ LT.}$

#171

MEARS ROAD

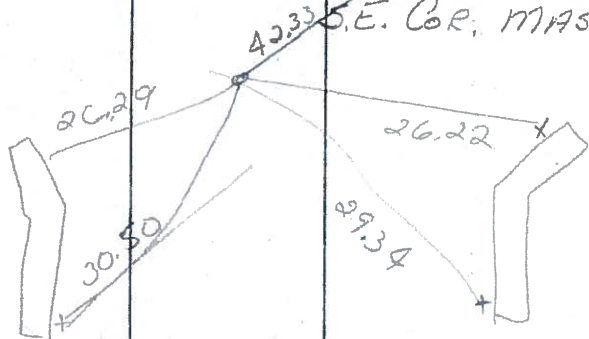
Post spt

#32

NEW TIES

"X" IN 2ND STONE DOWN FROM TOP @ W. END S. CULVERT WALL S.W. 29.27
 "X" IN 4TH STONE DOWN FROM TOP @ W. END N. CULVERT WALL N.W. 30.45

S.W. COR MASONRY HOWL. N.W. 30.65
 N.W. COR. MASONRY HOWL S.W. 29.26
 N.E. COR. MASONRY HOWL. S.S.W. 26.13
 S.E. COR. MASONRY HOWL. N.N.W. 26.56



SLM 771+23
 0.5' RT &
 9.9 N-SP
 9.0 S-SP

STA. 104+85.9
 S.W. COR. SEC. 21
 PORTAGE TWP.
 $\Delta = 1^\circ - 20' \text{ RT.}$

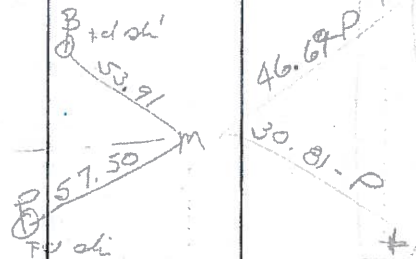
MON. BOX "IN SIGHT"

#31

+ TOP E. END 30" TILE SE. 46.63 (D)
 + TOP W. END 30" TILE S.W. 30.75 (P)
 SHI. IN GUY POLE N.E. 53.95
 R.R. Spt. IN P. POLE N.W. 57.45

LEMBRECHT ROAD

"170



62 24 &
 10.8 SEP
 SLM +85

did not open box

PERSONNEL	TITLE	PERSONNEL	TITLE
CK. BY			
SILVESTER			
BURNSIDE			
SMITH			

COUNTY WOOD DATE OK-8-11-69

S. R. #281 WEATHER _____

SEC. 21 TEMP. _____

DESCRIPTION CONTROL TIES JOB NO. _____

LEFT CENTER LINE RIGHT

<p>STA. 131+23.3 5/4 Post SEC. 21 PORTAGE TWP. R.R. Spk. Δ = 0°-16' LT. #171 MEARS ROAD</p>	<p>#32</p>	<p>NEW TIES</p>	<p>"X" IN 2ND STONE DOWN FROM TOP @ W. END S. CULVERT WALL S.W. 29.27 "X" IN 4TH STONE DOWN FROM TOP @ W. END N. CULVERT WALL N.W. 30.45 S.W. COR. MASONRY HOWL. N.W. 30.63 N.W. COR. MASONRY HOWL S.W. 29.36 N.E. COR. MASONRY HOWL S.S.W. 26.13 S.E. COR. MASONRY HOWL. N.W. 26.56</p>
<p>STA. 104+85.9 S.W. COR. SEC. 21 PORTAGE TWP. Δ = 1°-20' RT. MON. BOX "IN SIGHT" LEMBRECHT ROAD #170</p>	<p>#31</p>		<p>" + - Top E. END 30" TILE S.E. ^(D) 46.63 " + - Top W. END 30" TILE S.W. ^(P) 30.75 SHI. IN GUY POLE N.E. 53.95 R.R. Spk. IN P. POLE N.W. 57.43</p>

PERSONNEL TITLE PERSONNEL TITLE

COUNTY Wood. DATE April, 28, 1969

S. R. #281 WEATHER Cloudy.

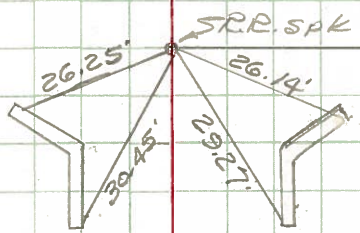
SEC. _____ TEMP. +70°

DESCRIPTION Ties to Control Points. JOB NO. _____

LEFT CENTER LINE RIGHT

32

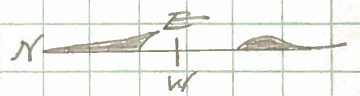
N 1/4 Sec. #28 Portage Twp.



Mears Road

NE. Cor. Sec. #28 Portage Twp.

33



HUFFMAN ROAD.

"x" cut in NE&S Ends of Conc pipe x-over

PERSONNEL	TITLE	PERSONNEL	TITLE

COUNTY Wood DATE OK 12-5-57
 S. R. #281 WEATHER 3-31-60
 SEC. _____ WEATHER 8-24-62
 TEMP. 11-1-62
 JOB NO. Silvester 2-28-64

DESCRIPTION	LEFT	CENTER LINE	RIGHT	JOB NO.
Sta. 131+23.3 5/4 post sec. 21 Portage Twp. set wood Hub from old ties Set R.R. spk. $\Delta = 0^\circ - 16' Lt.$ Mears Road		OK	S.W. cor. masonry Hdwl. N.W. 30.6 N.W. cor. masonry Hdwl. S.W. 29.36 N.E. cor. masonry Hdwl. S.S.W. 26.13 S.E. cor. masonry Hdwl. N.N.W. 26.45 26.56	Note: (2' down from top)
	(32)	#171	"X" in 2 nd stone down from Top @ W. end of S. Culvert wall S.W. 29.27' "X" in 4 th stone down from Top @ W. end of N. Culvert wall N.W. 30.45'	
Sta. 157+62.8 = 797+56.40 S.E. cor. sec. 21 Portage Twp. Stone Set R.R. spk. Huffman Road from Ties		OK	Iron cor. post S.E. 45.25 "X" S end conc. pipe S.W. 25.13 Conc. man S.W. ? Shiner in P.P. N.E. 41.09 Shiner in Br. Pole N.W. 30.09	
	(33)	#172		
Sta. 824+02.58 meas. $\Delta = 0^\circ - 29' Lt.$ meas. 5/4 post sec. 22 Portage Twp. Eckert Ditch Brass Plate imbedded in Conc. $\Delta = 0^\circ - 29' Lt.$ (exposed)		OK	Near edge steel Gr. Rail Post N.E. 35.84' Near edge steel Gr. Rail Post S.E. 28.78' Near edge steel Gr. Rail Post S.W. 24.12 Near edge steel Gr. Rail Post N.W. 32.23'	
	(34)	#173		
Sta. 850+45.43 S.E. cor. sec. 22 Portage Twp. Stone with brick on top. Set R.R. spk. set. $\Delta = 0^\circ - 47' Lt.$ meas. Cloverdale Rd.		OK	Shiner in P. Pole S.S.E. 95.78' "X" cut in S.E. cor. C.B. Top S.W. Plumbed 49.64' "X" cut in North end 66" Conc. Pipe N.W. Plumbed 59.30'	
	(35)	#174		