

O.D.O.T. DISTRICT 2 SURVEY OFFICE (USE ONLY)

PERSONNEL

REFERENCE NO. 33

SHEET 27 OF 27

NOTES RHOADES

DATE 5-14-19

ROUTE SR 281

H.C. LEU

WEATHER SUNNY

COUNTY WOOD

R.C. MILLER

TEMP. 60°

TOWNSHIP PORTAGE

SECTION 21

DWG BY NIESE

PID 102824

T 4 N R 11 E

TYPE MONUMENT MAG/WASHER

ON SURFACE - ~~BELOW~~ ON

OFFSET C PAVEMENT 3.7' ~~LT~~ : RT

- TO - EDGE PAVEMENT

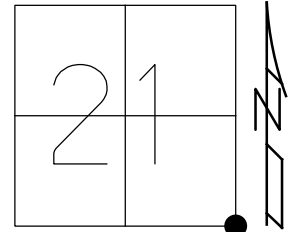
STATION: 798+81.25

HORZ. DATUM: NAD83(2011)

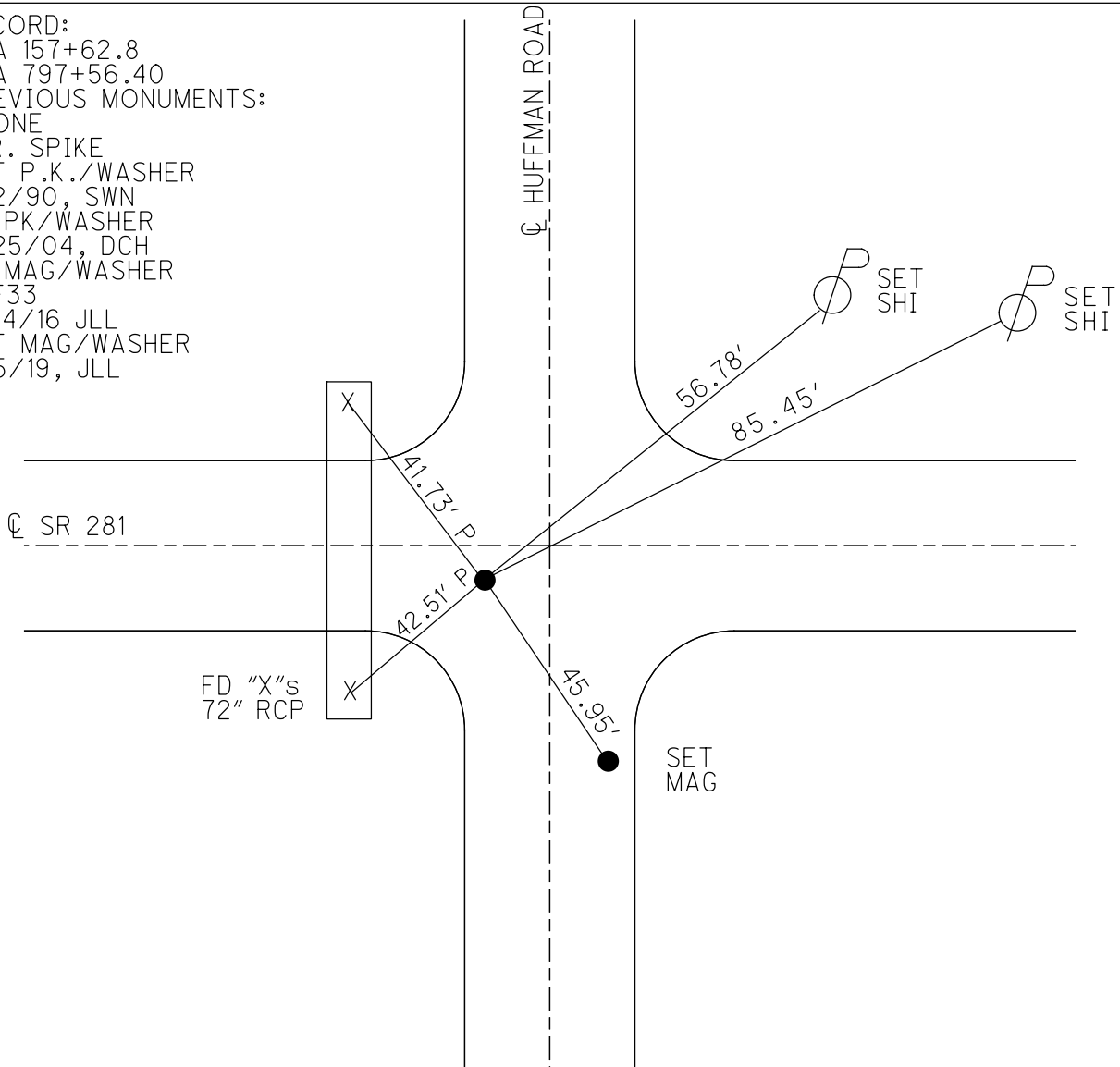
GEOID: 2012A

GRID: NORTHING: 590476.501

EASTING: 1668142.989



RECORD:
 STA 157+62.8
 STA 797+56.40
 PREVIOUS MONUMENTS:
 STONE
 R.R. SPIKE
 SET P.K./WASHER
 7/2/90, SWN
 FD PK/WASHER
 5/25/04, DCH
 FD MAG/WASHER
 REF33
 11/14/16 JLL
 SET MAG/WASHER
 9/5/19, JLL



O.D.O.T. DISTRICT 2 SURVEY OFFICE (USE ONLY)

PERSONNEL

REFERENCE NO. 33

SHEET 25 OF 25

NOTES NUHFER

DATE 5-25-04

ROUTE S.R. 281

H.C. HOMAN

WEATHER CLEAR/CLOUDY

COUNTY WOOD

R.C. ADKINS

TEMP. +68°

TOWNSHIP PORTAGE

SECTION 21

T 4 N R 11 E

TYPE MONUMENT P.K. WASHER

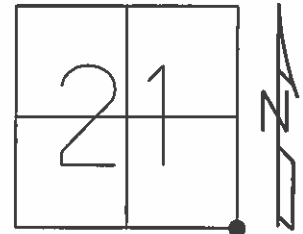
ON SURFACE - NO YES

NO - Q PAV'T - RIGHT 3.7'

NO TO NO - EDGE PAVEMENT 12.0' W. * HUFFMAN RD.

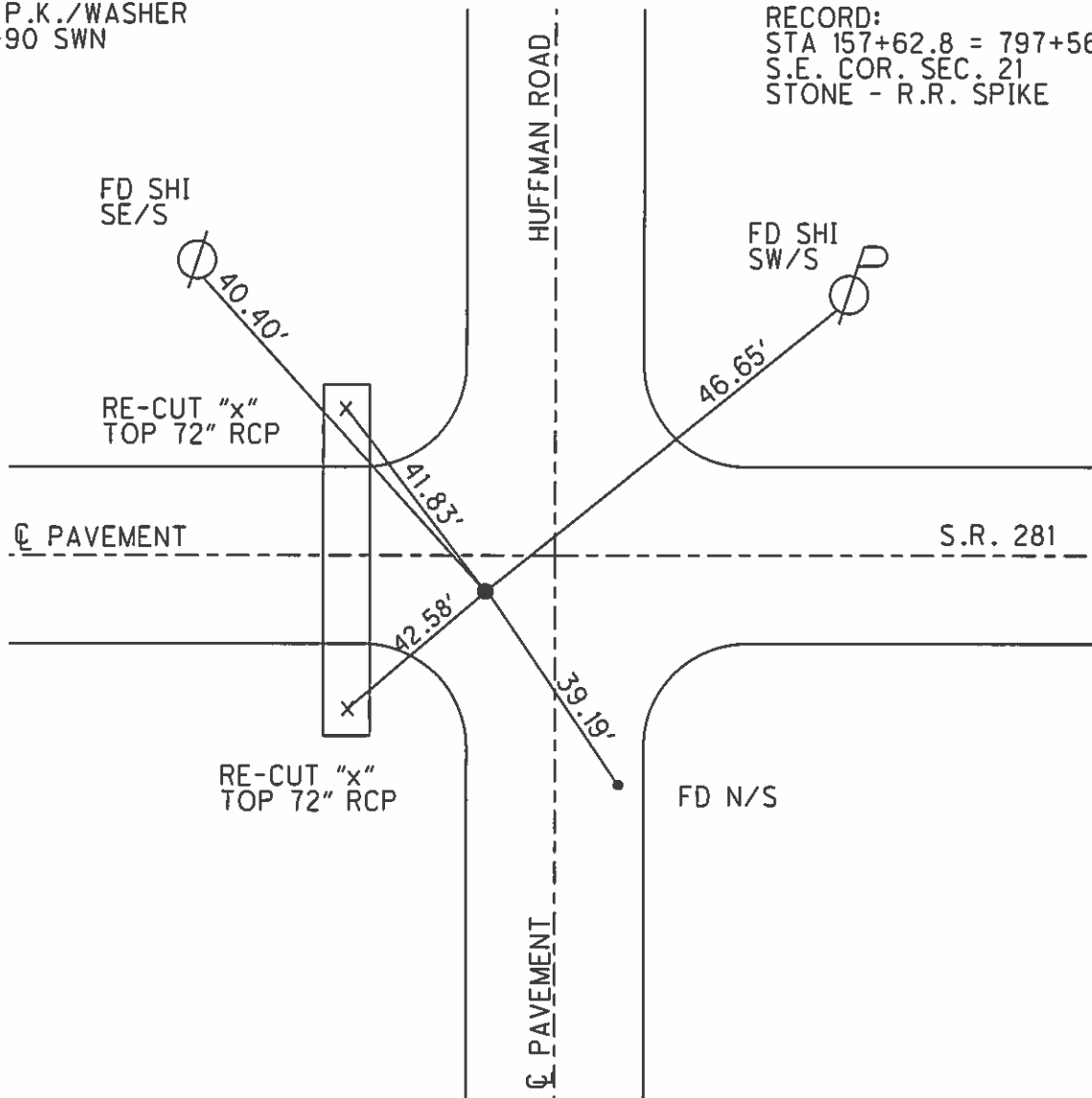
S.L.M. 797+21

Grid: Northing: _____ Easting: _____



SET P.K./WASHER
7-2-90 SWN

RECORD:
STA 157+62.8 = 797+56.40
S.E. COR. SEC. 21
STONE - R.R. SPIKE



O.D.O.T. DISTRICT 2 SURVEY OFFICE

PERSONNEL

REFERENCE NO. 33

SHEET 1 OF 9

NOTES ROUSOS

DATE 7-1-02

ROUTE S.R. 281

H.C. ROUSOS

WEATHER SUNNY

COUNTY WOOD

R.C. HOMAN

TEMP. 90°

TOWNSHIP PORTAGE

SECTION 21

T 4 N R 11 E

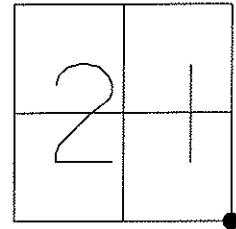
TYPE MONUMENT PK & WASHER

ON SURFACE - ~~BELOW~~ YES

~~LEFT~~ - Q PAV'T - RIGHT 3.9'

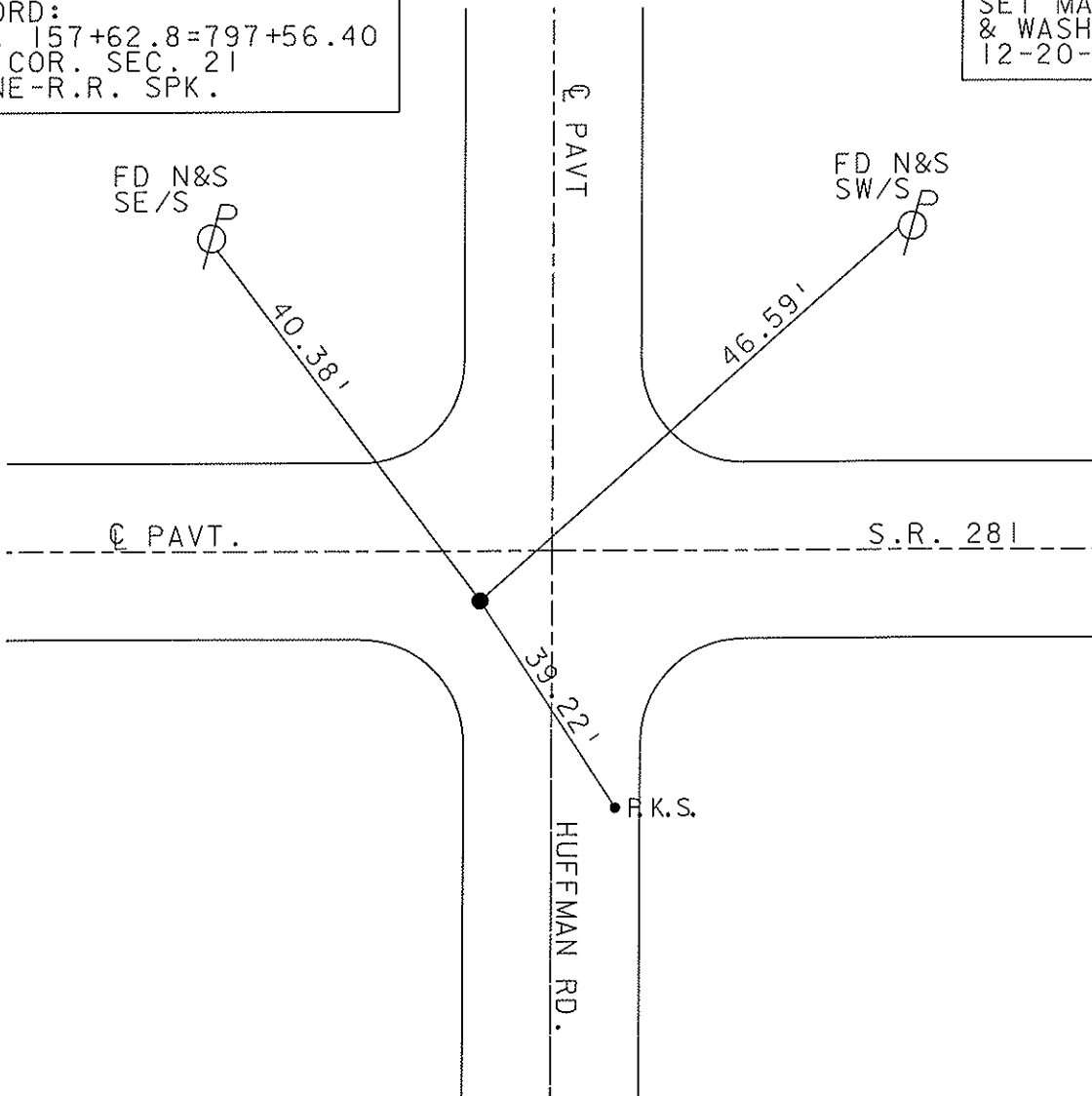
TO EDGE PAVEMENT 12.0' W Q
HUFFMAN RD.

S.L.M. 797+12



RECORD:
STA. $157+62.8 = 797+56.40$
S.E. COR. SEC. 21
STONE-R.R. SPK.

SET MAG NAIL
& WASHER
12-20-02 DCH



Milled &
Resurfaced 2002

O.D.O.T. DISTRICT 2 SURVEY OFFICE

PERSONNEL

REFERENCE NO. 33

SHEET 11 OF 11

NOTES HOFFMAN

H.C. LOSHRKE

DATE 6-5-90

ROUTE SR 281

R.C. BARNHISEL

WEATHER CLEAR

COUNTY WOOD

TEMP. 68°

TOWNSHIP PORTAGE

SECTION 21

T4 NR 11 E

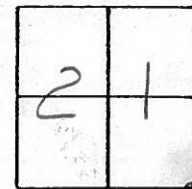
TYPE MONUMENT P.K. / WASHER

ON SURFACE - BELOW YES

LEFT C. PAV'T. - RIGHT 3.9'

TO EDGE PAVEMENT 12.0' W. of HUFFMAN Rd.

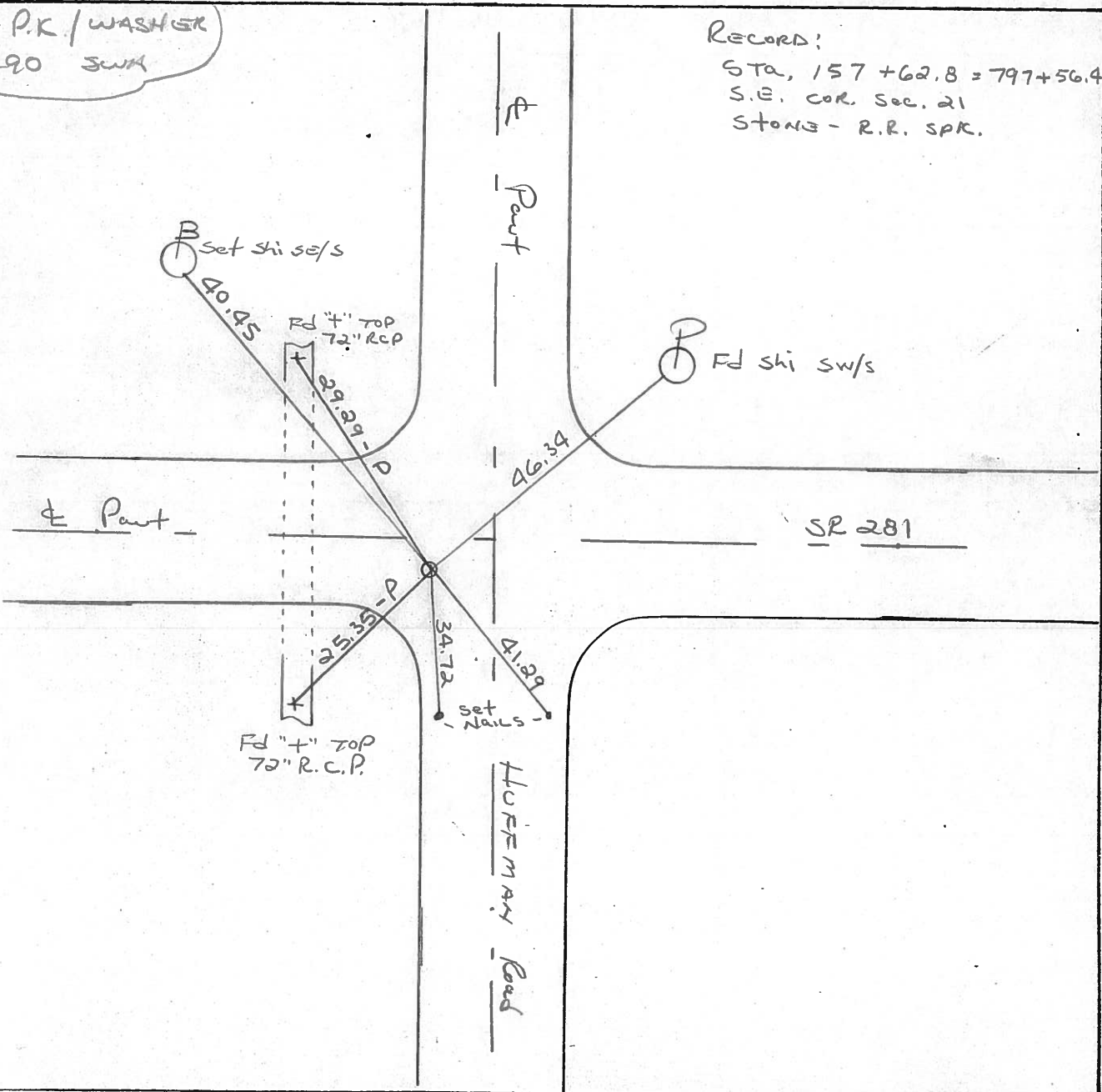
S.L.M. 797+12



Set P.K. / WASHER
7-2-90 SWH

RECORD:

STA, 157+62.8 = 797+56.40
S.E. COR. Sec. 21
STONE - R.R. SPR.



County WOOD S.R. 281

Township PORTAGE

Section 21

T4N, R11E

Personnel HOFFMAN

HOUSEHOLDER

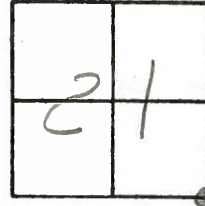
LOEHKE

BARNHISEL

Date April 7, 83

Weather RAIN

Temp. +45°



33

Fd P.K. @ surface

4.0' E of & Paut SR281

11.7' West of & Paut
HUFFMAN Rd.

SLM 797+63

Record:
 STA. 157+62.8 - 797+56.40
 S.F. COR. SEC 21
 STONE - R.R. SPK

SET P.K./WASHER
5/25/83
S.W.H.

Set shi
S/E/S



40.50

Fd 4" TOP
5 1/2" END
72" CONC PIPE



29.24-P

HUFFMAN Rd.

Set shi S/W/S

46.31

& Paut

S.R. 281

52.83

Set shi E/S
NORTH Post
of SIGN



"John Blue Co. Dealer"

& Paut

PERSONNEL TITLE PERSONNEL TITLE

COUNTY Wood

DATE OK-8-11-69

S. R. #281

WEATHER

SEC. 21 & 22

TEMP.

DESCRIPTION

CONTROL TIES

JOB NO.

LEFT

CENTER LINE

RIGHT

STA. 824+02.58
 S. 1/4 Post SEC. 22
 PORTAGE Twp.
 $\Delta = 0^\circ - 29' \text{ LT.}$
 BRASS PLATE IMBEDDED
 IN CONC.
 ECKERT DITCH

#173

#34

OK 4-14-77
RB

NEAR EDGE STEEL GR. RAIL POST N.E. 35.84'
 NEAR EDGE STEEL GR. RAIL POST S.E. 28.78'
 NEAR EDGE STEEL GR. RAIL POST S.W. 24.12'
 NEAR EDGE STEEL GR. RAIL POST N.W. 32.23'

STA. 157+62.8 = 797+56.40
 S.E. COR. SEC. 21
 PORTAGE Twp.
 STONE - R.R. SPK.

HUFFMAN ROAD

#172

#33

set shi
 46.31

797+63

"X"-S. END CONC. PIPE S.W. 25.25
~~SHINER IN P. POLE N.E. 46.36~~
 "X"-N. END CONC. PIPE N.W. 29.15
~~SHINER IN T. POLE S.E. 42.84~~

for PK surface
 4.0 RT & 281
 1157 west of Huffman

29.24

40.50
 set shi
 disels

52.83
 Blue Co. Dealer
 set shi @ 1/3 1/2 post

PERSONNEL TITLE PERSONNEL TITLE

COUNTY Wood.

DATE April 28, 1969

S. R. #281

WEATHER Cloudy.

SEC. _____

TEMP +70°

DESCRIPTION Ties to Control Points

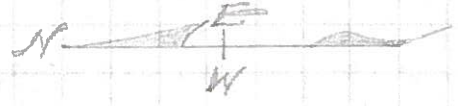
JOB NO. _____

LEFT

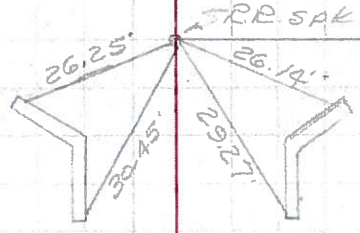
CENTER LINE

RIGHT

32



N 1/4 Sec. #28 Portage Twp.

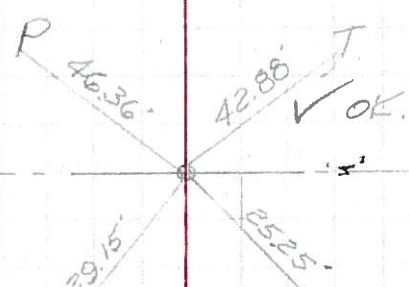


Mears Road

33



NE. Cor. Sec. #28 Portage Twp.



HUFFMAN ROAD

"x" cut in N&S ends of Conc pipe X-OVER

PERSONNEL TITLE PERSONNEL TITLE

COUNTY Wood DATE OK 12-5-57

S. R. #281 WEATHER 3-31-60
Sword

SEC. _____ TEMP. 8-24-62
11-1-62

DESCRIPTION LEFT CENTER LINE RIGHT JOB NO. Silvester 2-28-64

DESCRIPTION	LEFT	CENTER LINE	RIGHT
Sta. 131+23.3 S 1/4 post sec. 21 Portage Twp. set wood Hub from old ties Set P.R. spk. $\Delta = 0^\circ - 16' Lt.$ Mears Road		OK	S.W. cor. masonry Hdwl. N.W. 30. N.W. cor. masonry Hdwl. S.W. 29.2 N.E. cor. masonry Hdwl. S.S.W. 26.13' 26.2 S. E. cor. masonry Hdwl. N.N.W. 26.4 26.5
	#171		Note: (2' down from top) "X" in 2 nd stone down from Top @ N. end of S. Culvert wall S.W. 29.27' "X" in 4 th stone down from Top @ W. end of N. Culvert wall N.W. 30.45'
Sta. 157+62.8 = 797+56.40 S.E. cor. sec. 21 Portage Twp. Stone Set P.R. spk. Huffman Road from Ties		OK	Iron cor. post S.E. 45.2 "X" 5 end conc. pipe S.W. 26.1 Conc. man S.W. ? Shiner in P.P. N.E. 41.0 Shiner in Br. Pole N.W. 30.0
	#172		
Sta. 824+02.58 meas. $\Delta = 0^\circ - 29' Lt.$ meas. S. 1/4 post sec. 22 Portage Twp. Eckert Ditch Brass Plate imbedded in Conc. $\Delta = 0^\circ - 29' Lt.$ (exposed)		OK	Near edge steel Gr. Rail Post N.E. 35.84 Near edge steel Gr. Rail Post S.E. 28.78 Near edge steel Gr. Rail Post S. 24.12 Near edge steel Gr. Rail Post N. 32.23
	#173		
Sta. 850+45.43 S.E. cor. sec. 22 Portage Twp. Stone with bricks on top. Set P.R. spk. set. $\Delta = 0^\circ - 47' Lt.$ meas. Cloverdale Rd.		OK	Shiner in P. Pole S.S.E. 95.78' "X" cut in S.E. cor. C.B. Top S.W. Plumbed 49.64' "X" cut in North end 66" Conc. Pipe N. Plumbed 59.30'
	#174		