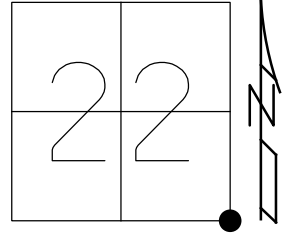


O.D.O.T. DISTRICT 2 SURVEY OFFICE (USE ONLY)

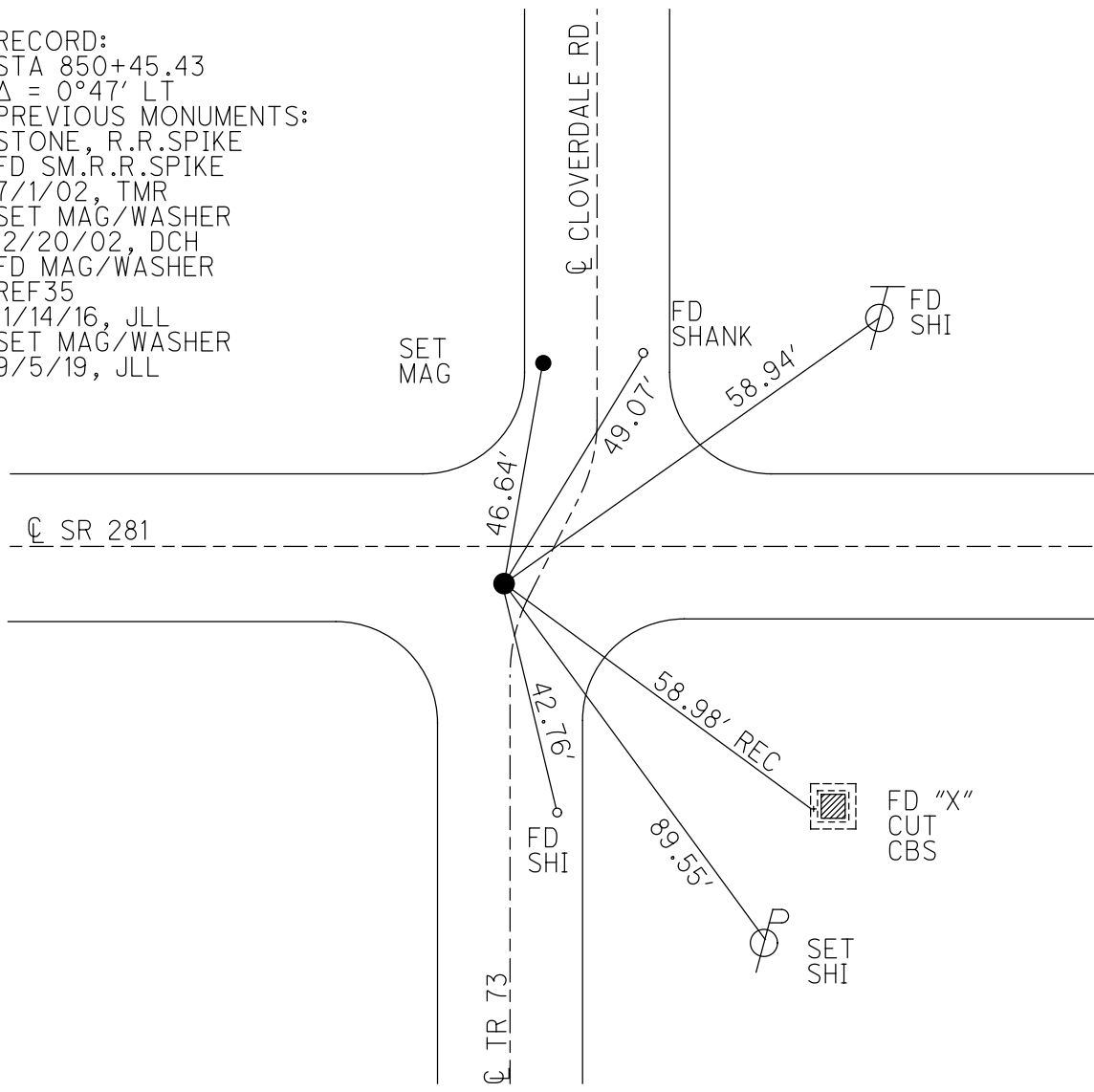
PERSONNEL _____ REFERENCE NO. 35 SHEET 2 OF 10
 NOTES JAMES DATE 4/25/19 ROUTE SR 281
 H.C. LEU WEATHER SUNNY COUNTY WOOD
 R.C. JAMES TEMP. 63° TOWNSHIP PORTAGE
 SECTION 22
 DWG BY NIESE PID 102824 T 4 N R 11 E

TYPE MONUMENT SM.R.R.SPIKE
~~ON SURFACE~~ - BELOW 4"
 OFFSET CL PAVEMENT 4.8' ~~RT~~ : RT
- TO - EDGE PAVEMENT 9' W. OF CL N
 STATION: 850+83



HORZ.DATUM: NAD83(2011) GEOID: 2012A
 GRID: NORTHING: 590399.159 EASTING: 1673428.983

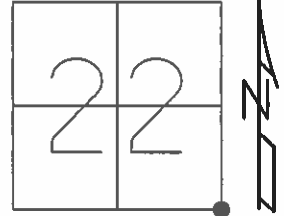
RECORD:
 STA 850+45.43
 $\Delta = 0^{\circ}47' \text{ LT}$
 PREVIOUS MONUMENTS:
 STONE, R.R.SPIKE
 FD SM.R.R.SPIKE
 7/1/02, TMR
 SET MAG/WASHER
 12/20/02, DCH
 FD MAG/WASHER
 REF35
 11/14/16, JLL
 SET MAG/WASHER
 9/5/19, JLL



O.D.O.T. DISTRICT 2 SURVEY OFFICE (USE ONLY)

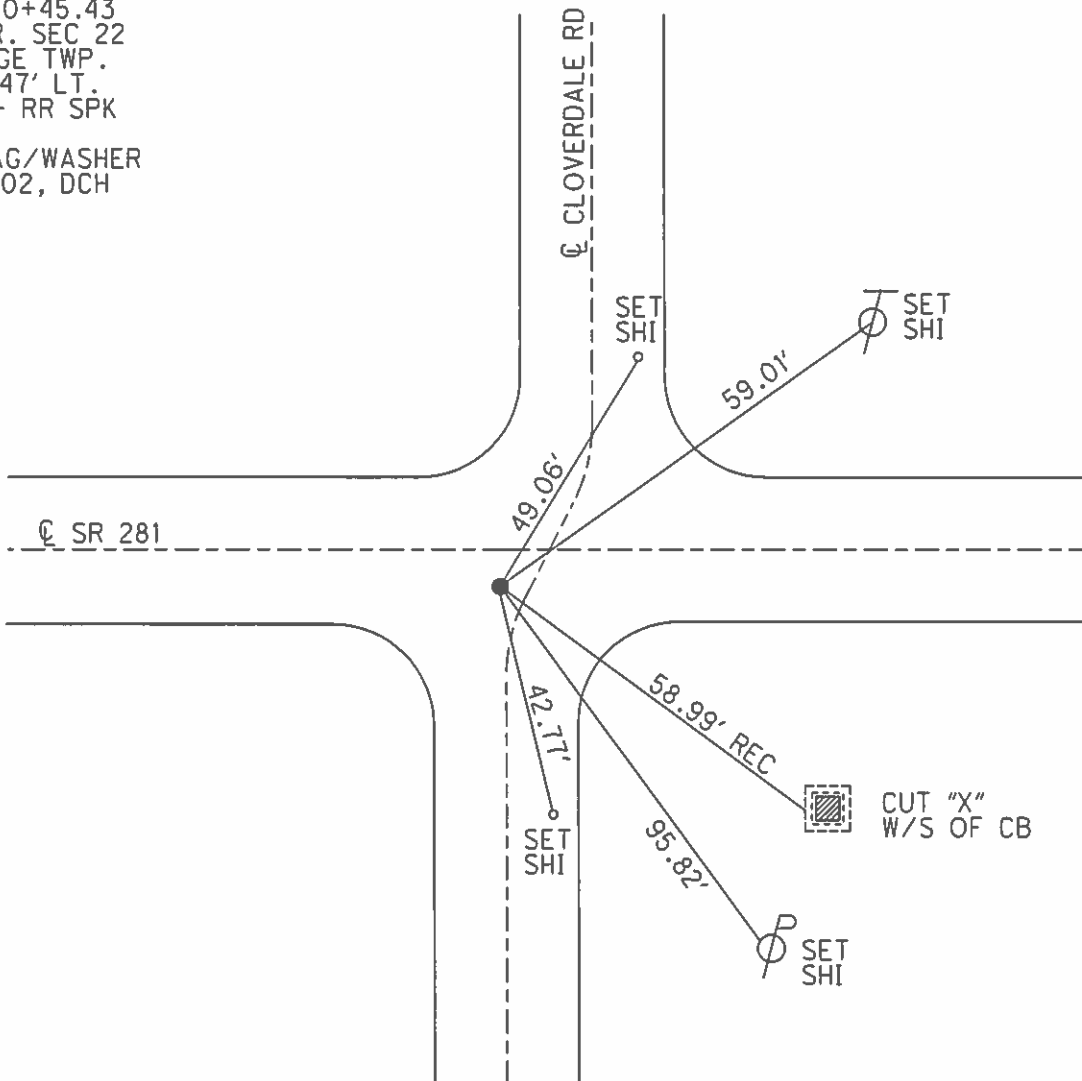
PERSONNEL _____ REFERENCE NO. 35 SHEET 3 OF 9
 NOTES ROUSOS DATE 7/1/02 ROUTE SR 281
 H.C. ROUSOS WEATHER SUNNY COUNTY WOOD
 R.C. HOMAN TEMP. 93° TOWNSHIP PORTAGE
 SECTION 22
 T 4 N R 11 E

TYPE MONUMENT SM.R.R.SPIKE
 ON SURFACE - ~~BELOW~~ ON _____
~~LEFT~~ - ☉ PAV'T - RIGHT 4.8', 9' W OF ☉ N
 - TO - EDGE PAVEMENT
 S.L.M. 850+83
 Grid: Northing: _____ Easting: _____



RECORD:
 STA 850+45.43
 SE COR. SEC 22
 PORTAGE TWP.
 $\Delta = 0^\circ 47'$ LT.
 STONE- RR SPK

SET MAG/WASHER
 12/20/02, DCH



O.D.O.T. DISTRICT 2 SURVEY OFFICE

PERSONNEL

REFERENCE NO. 35

SHEET OF

NOTES BARNHISEL

H.C. Hoffman

R.C. Sockman

DATE 4-27-87

WEATHER Sunny

TEMP. +55°

ROUTE 281

COUNTY WOOD

TOWNSHIP PORTAGE

SECTION 22

T4 N R 11 E

TYPE MONUMENT P.K. NAIL

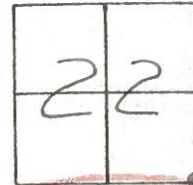
ON SURFACE - ~~BELOW~~ yes

LEFT - C PAV'T. - RIGHT 4.8

- TO - EDGE PAVEMENT

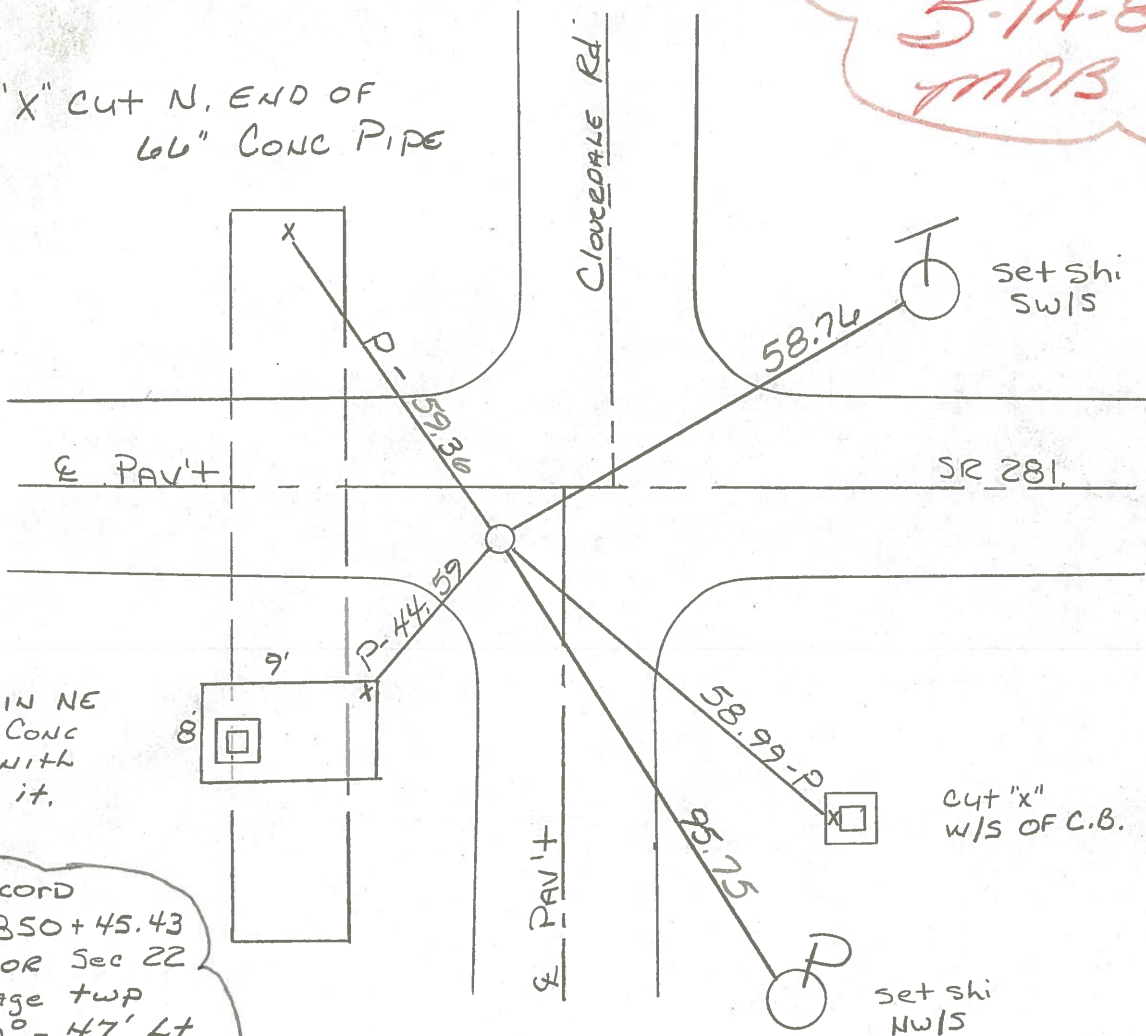
S.L.M. 850+83

9.0 W of E Clovee. Rd N.



Set Sm RR Spk
5-14-87
TAPB

"X" CUT N. END OF
66" CONC PIPE



Cut "x" IN NE
COR OF CONC
SLAPE WITH
C.B. 14 ft.

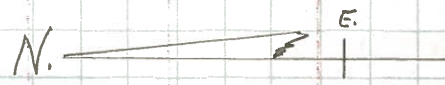
Record
Sta. 850+45.43
SE. COR Sec 22
Portage twp
 $\Delta = 0^\circ - 47' Lt$
STONE - RR SPK

cut "x"
w/s OF C.B.

RE-COPIED
1-26-71

PERSONNEL TITLE PERSONNEL TITLE COUNTY WOOD DATE OK-8-11-69
 CK. BY SILVESTER S. R. #281 WEATHER _____
BURNSIDE SEC. 22 & 23 TEMP. _____
SMITH

DESCRIPTION LEFT CENTER LINE RIGHT JOB NO.



STA. 876+80.17
 S. 1/4 Post SEC. 23
 PORTAGE TWP.
 $\Delta = 0^\circ - 26' RT.$
 R.R. Spk.

#36

SHI. GR. Post

19.87'

33.74 (P)

40.95 (P)

ROSENDALE ROAD

#175



"X"-N. END 60"
CONC. PIPE N.W.



"X"-S. END 60" CONC.
PIPE S.W.

STA. 850+45.43
 S.E. COR. SEC. 22
 PORTAGE TWP.
 $\Delta = 0^\circ - 47' LT.$
 STONE R.R. Spk.

#35

SHINER IN T. POLE N.E. 57.80'
 SHINER IN P. POLE S.S.E. 95.78'
 "X" S.E. COR. C. B. TOP S.W. 49.64'^(P)
 "X" N. END 66" CONC. PIPE N.W. 59.30'^(P)

CLOVERDALE ROAD

#174

PERSONNEL TITLE PERSONNEL TITLE

COUNTY Wood DATE 01-12-5-57

S. R. #281 WEATHER 3-31-60

SEC. TEMP. 8-24-62

JOB NO. Silvester 2-28-64

DESCRIPTION LEFT CENTER LINE RIGHT

DESCRIPTION	LEFT	CENTER LINE	RIGHT
Sta. 131+23.3 3/4 post sec. 21 Portage Twp. set wood Hub from old ties set R.R. spk. $\Delta = 0^\circ - 16' Lt.$ Mears Road		OK	S.W. cor. masonry Hdwl. N.W. 30. N.W. cor. masonry Hdwl. S.W. 29.3 N.E. cor. masonry Hdwl. S.S.W. 26.13' 26.2 S. E. cor. masonry Hdwl. N.N.W. 26.4 26.5
	#171	11-1-62	Note: (2' down from top) "X" in 2 nd stone down from Top @ W. end of S. Culvert wall S.W. 29.27' "X" in 4 th stone down from Top @ W. end of N. Culvert wall N.W. 30.45'
Sta. 157+62.8 = 797+56.40 S.E. cor. sec. 21 Portage Twp. Stone Huffman Road		OK	Iron cor. post S.E. 45.2 "X" 5 end conc. pipe S.W. 26.1 Conc. man S.W. ? Shiner in P.P. N.E. 41.0 Shiner in Br. Pole N.W. 30.0
	#172		
Sta. 824+02.58 meas. S. 1/4 post sec. 22 Portage Twp. Eckert Ditch Brass Plate imbedded in Conc. $\Delta = 0^\circ - 29' Lt.$ (exposed)		OK	Near edge steel Gr. Rail Post N.E. 35.84 Near edge steel Gr. Rail Post S.W. 28.78 Near edge steel Gr. Rail Post S. 24.12 Near edge steel Gr. Rail Post N. 32.23
	#173		
Sta. 850+45.43 S.E. cor. sec. 22 Portage Twp. Stone with brick on top. Set R.R. spk. set. $\Delta = 0^\circ - 47' Lt.$ meas. Cloverdale Rd.		OK	Shiner in P. Pole S.S.E. 95.78' "X" cut in S.E. COE. C.B. Top S.W. Plumbed 49.64' "X" cut in North end 66" Conc. Pipe N. Plumbed 59.30'
	#174		