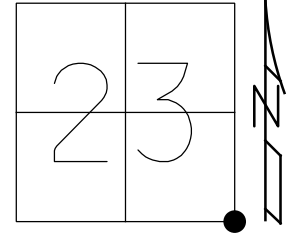


O.D.O.T. DISTRICT 2 SURVEY OFFICE (USE ONLY)

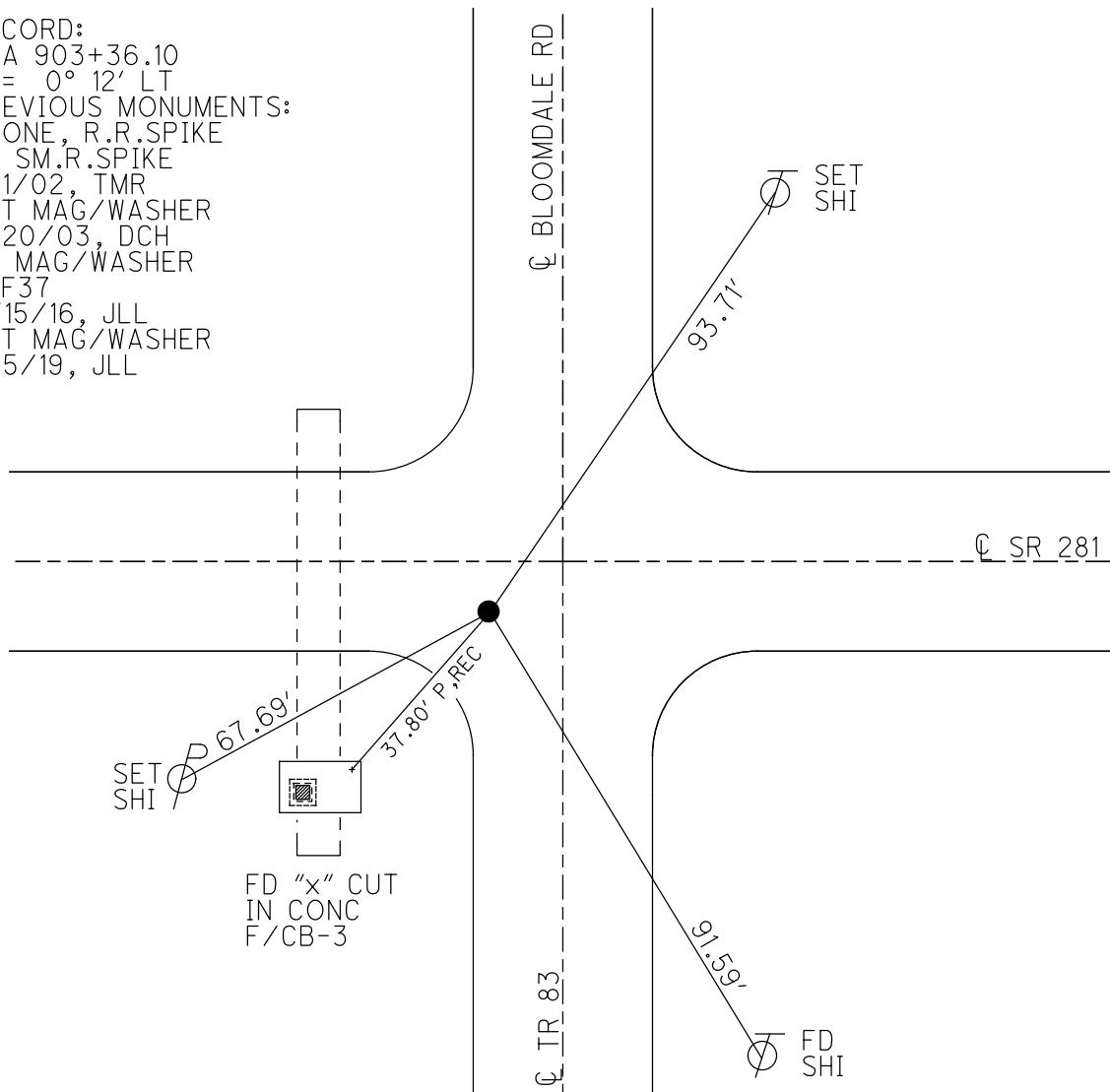
PERSONNEL _____ REFERENCE NO. 37 SHEET 4 OF 10
 NOTES RHOADES DATE 5/14/19 ROUTE SR 281
 H.C. LEU WEATHER SUNNY COUNTY WOOD
 R.C. MILLER TEMP. 60° TOWNSHIP PORTAGE
 DWG BY NIESE PID 102824 SECTION 23
 T 4 N R 11 E

TYPE MONUMENT MAG/WASHER
 ON SURFACE - ~~BELOW~~ ON _____
 OFFSET \odot PAVEMENT 3.8' ~~LT~~ : RT
 - TO - EDGE PAVEMENT
 STATION: 903+73



HORZ. DATUM: NAD83(2011) GEOID: 2012A
 GRID: NORTHING: 590398.008 EASTING: 1678717.047

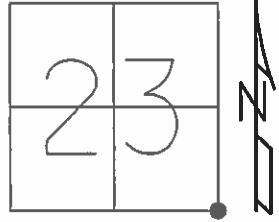
RECORD:
 STA 903+36.10
 $\Delta = 0^\circ 12' \text{ LT}$
 PREVIOUS MONUMENTS:
 STONE, R.R.SPIKE
 FD SM.R.SPIKE
 7/1/02, TMR
 SET MAG/WASHER
 2/20/03, DCH
 FD MAG/WASHER
 REF37
 11/15/16, JLL
 SET MAG/WASHER
 9/5/19, JLL



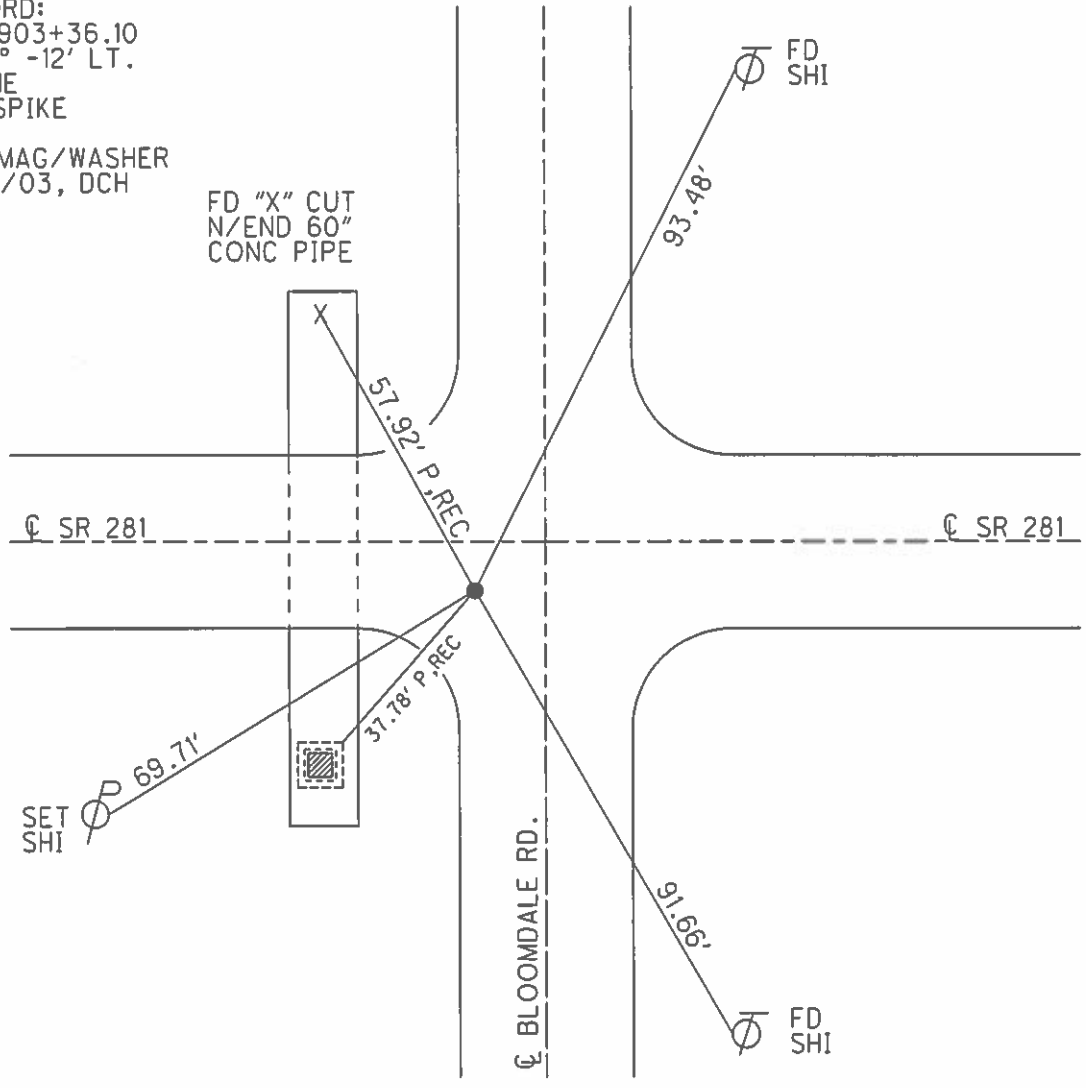
O.D.O.T. DISTRICT 2 SURVEY OFFICE (USE ONLY)

PERSONNEL _____ REFERENCE NO. 37 SHEET 5 OF 9
 NOTES ROUSOS DATE 7/1/02 ROUTE SR 281
 H.C. ROUSOS WEATHER SUNNY COUNTY WOOD
 R.C. HOMAN TEMP. 93° TOWNSHIP PORTAGE
 SECTION 23
 T 4 N R 11 E

TYPE MONUMENT SM.R.R.SPIKE
 ON SURFACE - ~~BELOW~~ ON _____
~~LEFT~~ - ϕ PAV'T - RIGHT 3.3'
 - TO - EDGE PAVEMENT
 S.L.M. 903+73
 Grid: Northing: _____ Easting: _____



RECORD:
 STA 903+36.10
 $\Delta = 0^\circ - 12' \text{ LT.}$
 STONE
 R.R.SPIKE
 SET MAG/WASHER
 2/20/03, DCH



O.D.O.T. DISTRICT 2 SURVEY OFFICE

PERSONNEL

REFERENCE NO. 37 SHEET OF

NOTES BARNHISEL

H.C. HOFFMAN

R.C. SOCKMAN

DATE 4-27-87

WEATHER SUNNY

TEMP. +55°

ROUTE 281

COUNTY WOOD

TOWNSHIP PORTAGE

SECTION 23

T 4 N R 11 E

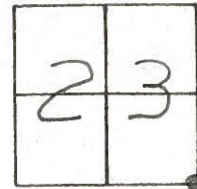
TYPE MONUMENT Lg RR Spk

ON SURFACE - BELOW 1"

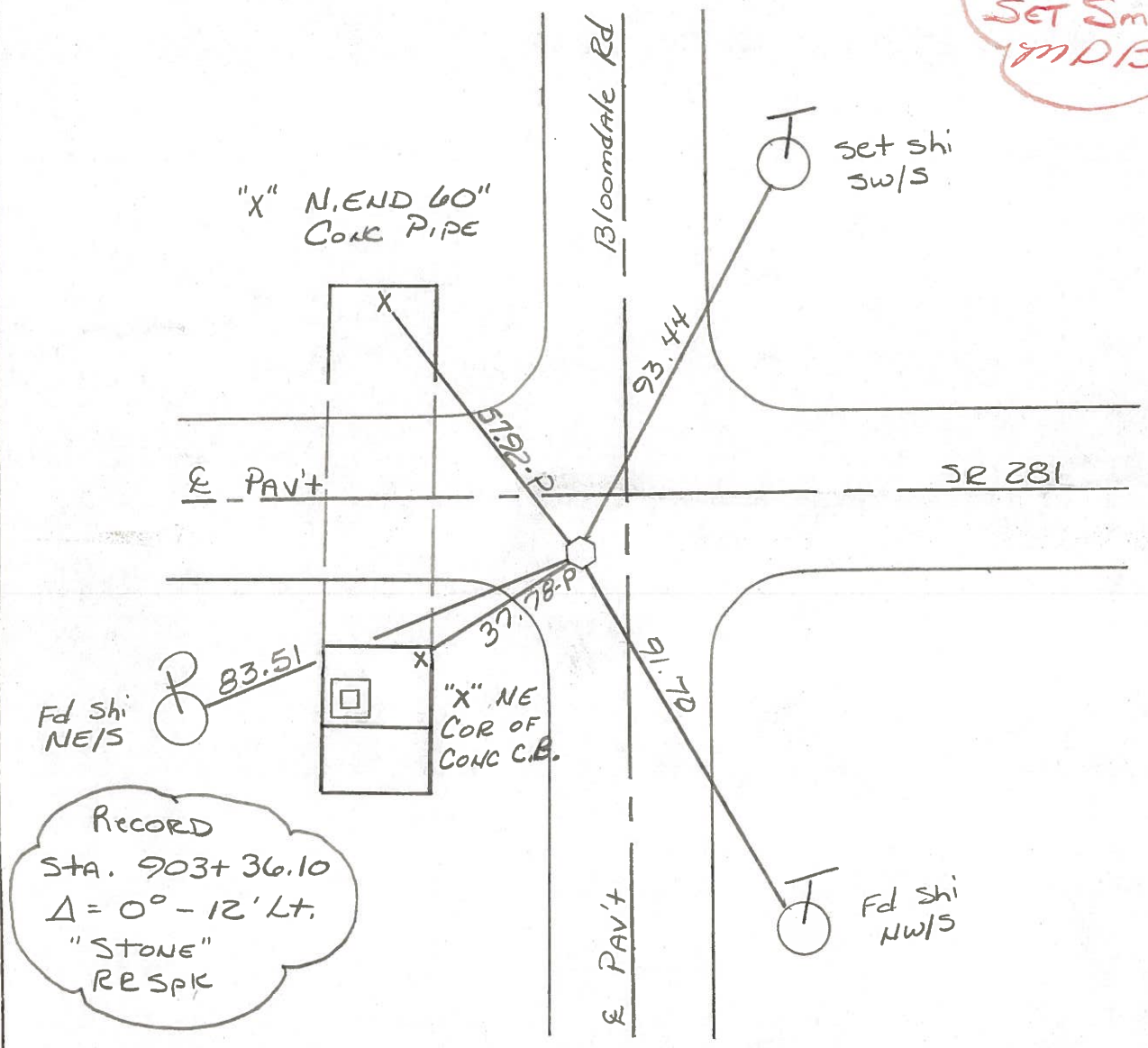
LEFT - & PAV'T. - RIGHT 3.3

- TO - EDGE PAVEMENT

S.L.M. 903 + 73



5-6-87
SET Sm RR
MDB



RECORD
STA. 903+36.10
 $\Delta = 0^\circ - 12' Lt.$
"STONE"
RR SPK

PERSONNEL	TITLE	PERSONNEL	TITLE	COUNTY	DATE
				WOOD	OK-8-11-69
				S. R. #281	WEATHER
				SEC. 23 & 24	TEMP.

DESCRIPTION	LEFT	CENTER LINE	RIGHT	JOB NO.
-------------	------	-------------	-------	---------

<p>STA. 930+15.62 S. 1/4 Post SEC. 24 PORTAGE Twp. "STONE"-SET R.R. Spk.</p>	<p>#177</p>	<p>#38</p>	<p>"X"-N.W. COR. C.B. Top S.E. 42.86' "X"-W. END 30' CONC. PIPE S.W. 50.87'^(P) "X"-N. END 66' CONC. PIPE N.E. 63.41'^(P)</p>
<p>STA. 903+36.10 S.E. COR. SEC. 23 PORTAGE Twp. $\Delta = 0^\circ - 12' \text{ LT.}$ "STONE"-SET R.R. Spk.</p>	<p>#176</p>	<p>#37</p>	<p>SHINER IN T. POLE S.E. 94.12' SHINER IN T. POLE S.S.E. 91.74' SHINER IN P. POLE S.W. 83.50' "X" N.E. END CONC. C.B. S.W. 37.78' "X" N. END 60" PIPE N.W. 57.90' SHINER IN T. POLE N.N.E. 93.34' NEAR EDGE CONC. BLK. FDN. N.E. 88.08' WELL CASING E.N.E. 88.30'</p>
<p>BLOOMDALE ROAD</p>			

PERSONNEL	TITLE	PERSONNEL	TITLE
Jameson			
♀			
Crew			

COUNTY Wood DATE 6-25-58
 S. R. #281 WEATHER Swoose
 Morrison 8-24-62
 TEMP. 75° 11-1-61
 Silvester 2-28-64

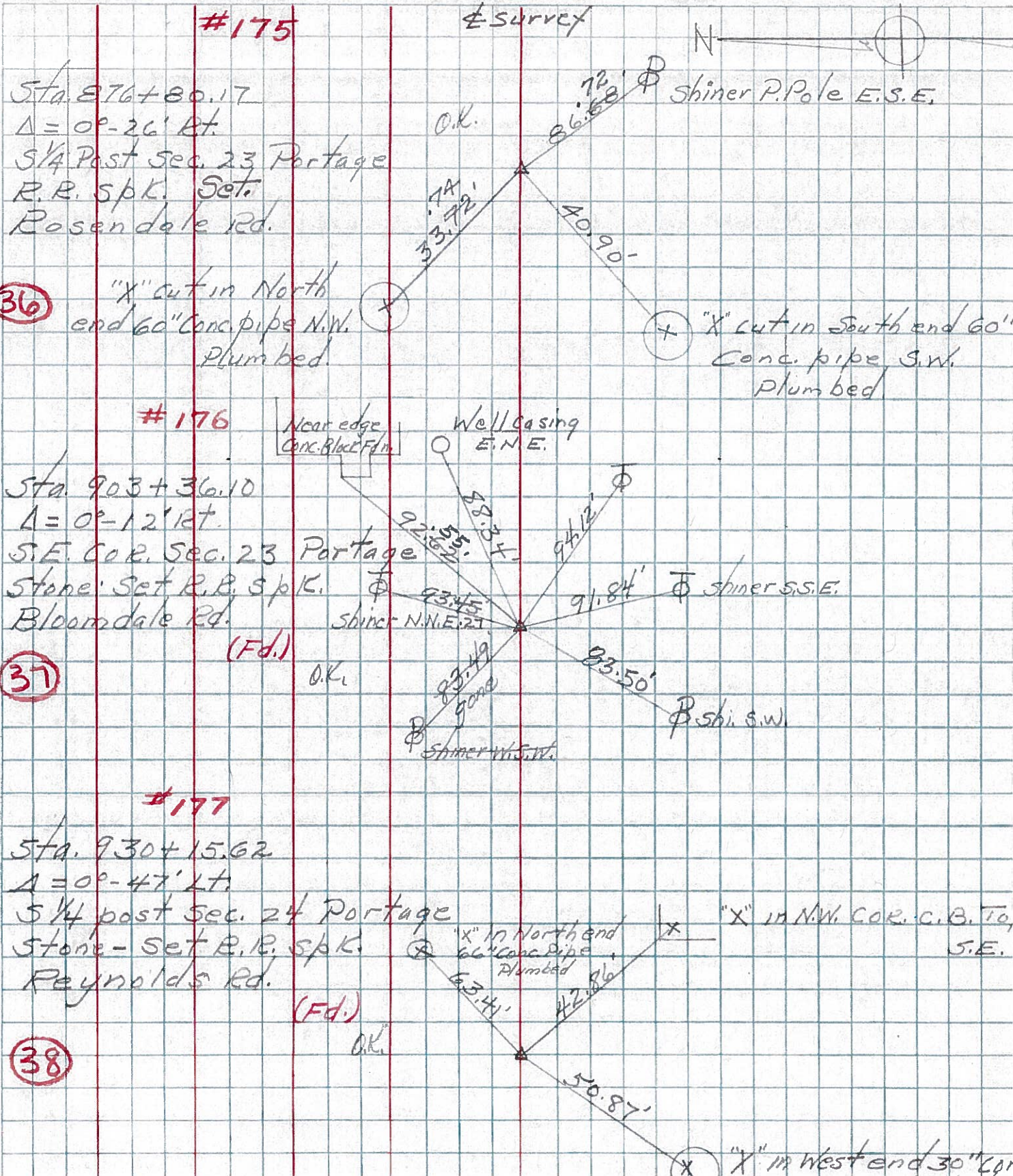
DESCRIPTION

LEFT

CENTER LINE

RIGHT

JOB NO.



(36)

(37)

(38)

#175

#176

#177

E Survey

N

Sta. 876+80.17
 $\Delta = 0^\circ-26'$ Rt.
 S 1/4 Past Sec. 23 Portage
 R.R. Spk. Set.
 Rosendale Rd.

Sta. 903+36.10
 $\Delta = 0^\circ-12'$ Rt.
 S.E. Cor. Sec. 23 Portage
 Stone Set R.R. Spk.
 Bloomdale Rd.

Sta. 930+15.62
 $\Delta = 0^\circ-47'$ Lt.
 S 1/4 past Sec. 24 Portage
 Stone - Set R.R. Spk.
 Reynolds Rd.

O.K.

O.K.

O.K.

O.K.

Shiner P. Pole E.S.E.

"X" cut in South end 60' Conc. pipe S.W. Plumbed

Near edge Conc. Block Fdn

Well casing E.N.E.

Shiner S.S.E.

Shi. S.W.

Shiner N.N.E. 27'

Shiner W.S.W.

"X" in N.W. Cor. C.B. To S.E.

"X" in North end 60" Conc. Pipe Plumbed

"X" in West end 30" Cor