

O.D.O.T. DISTRICT 2 SURVEY OFFICE (USE ONLY)

PERSONNEL

REFERENCE NO. 42

SHEET 9 OF 10

NOTES JAMES

DATE 4/25/19

ROUTE SR 281

H.C. LEU

WEATHER SUNNY

COUNTY WOOD

R.C. JAMES

TEMP. 66°

TOWNSHIP MONTGOMERY

SECTION 19

DWG BY NIESE

PID 102824

T 4 N R 12 E

TYPE MONUMENT MAG NAIL

ON SURFACE - ~~BELOW~~ ON

OFFSET  $\bar{C}$  PAVEMENT 5.6' ~~LT~~ : RT

- TO - EDGE PAVEMENT

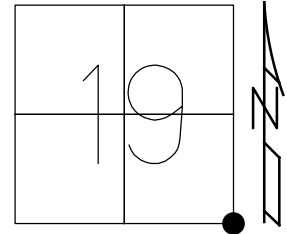
STATION: 1011+28

HORIZ.DATUM: NAD83(2011)

GEOID: 2012A

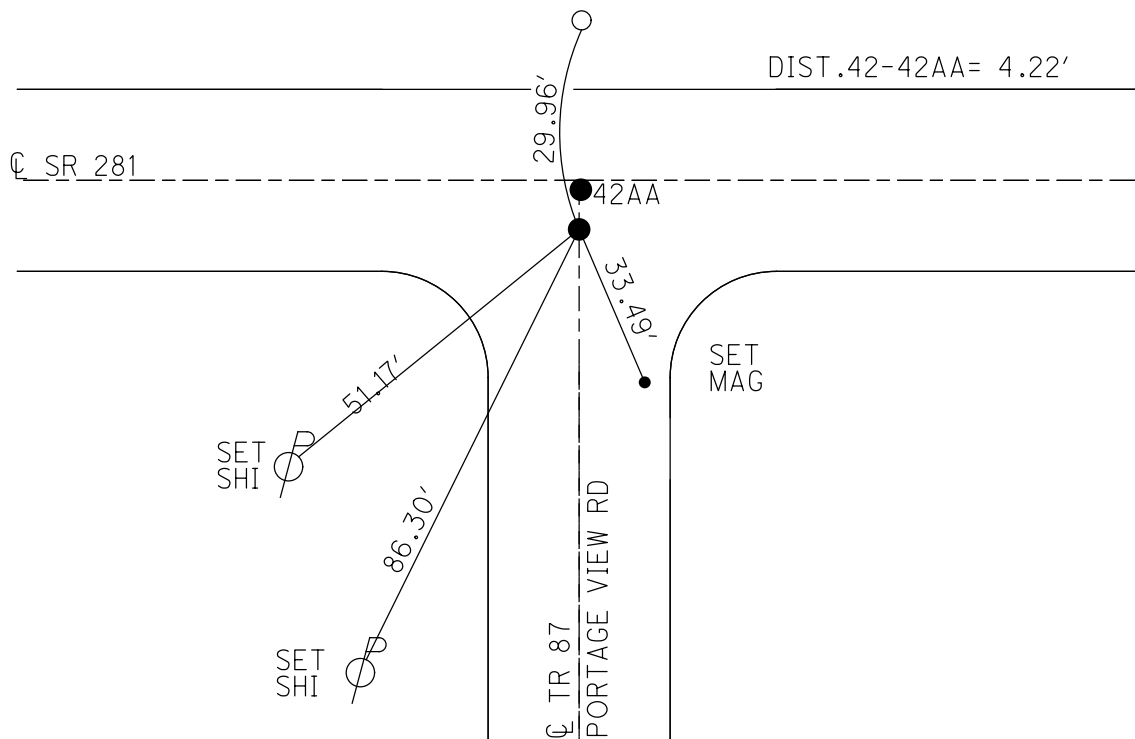
GRID: NORTHING: 590314.428

EASTING: 1689466.738



RECORD:  
 FD SM.R.R.SPIKE  
 7/1/02, TMR  
 SET MAG/WASHER  
 2/20/03, DCH  
 FD MAG NAIL  
 REF42  
 11/15/16, DCH, JLL  
 SET MAG/WASHER  
 9/5/19, JLL

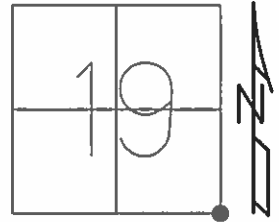
FD IPID  
 RLS775X  
 D.W.EIS



O.D.O.T. DISTRICT 2 SURVEY OFFICE (USE ONLY)

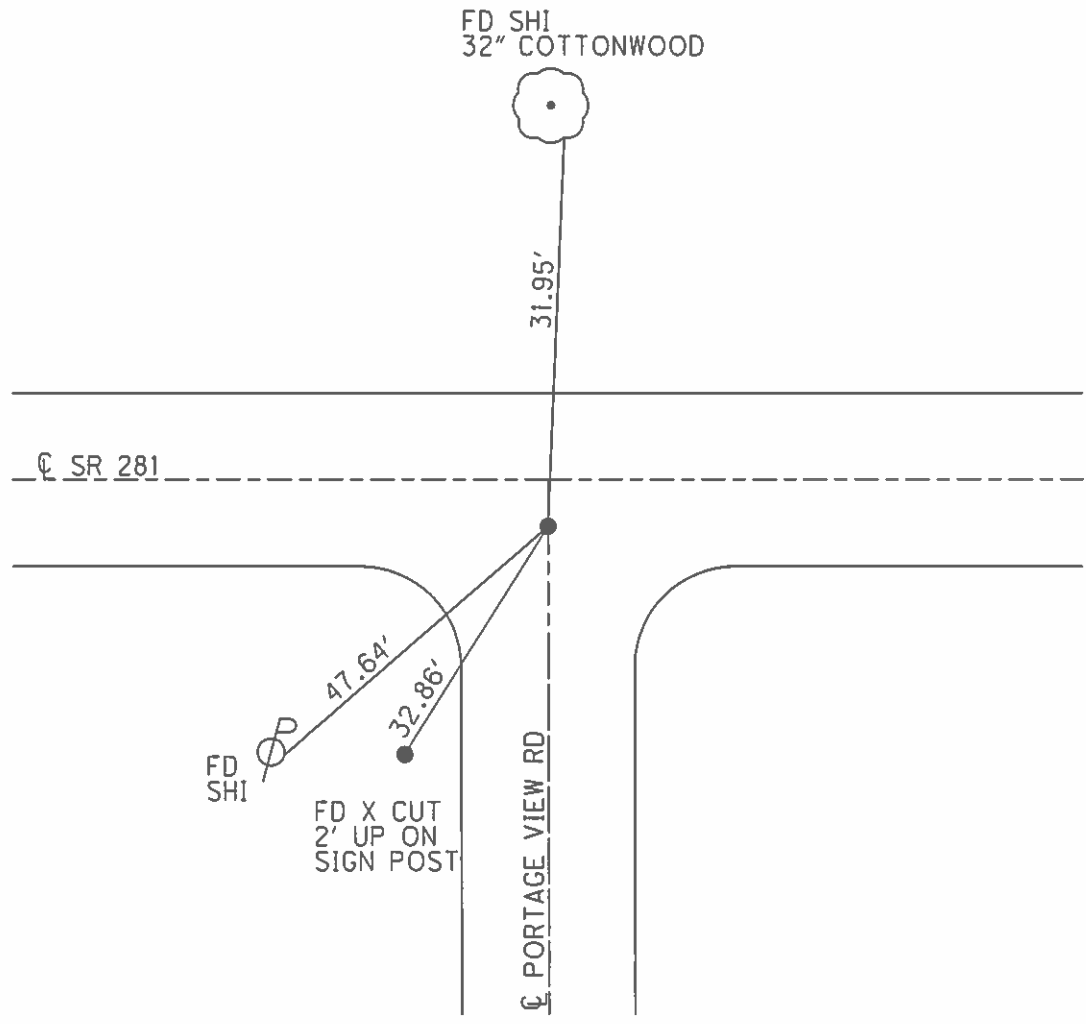
PERSONNEL \_\_\_\_\_ REFERENCE NO. 42 SHEET 9 OF 9  
 NOTES ROUSOS DATE 7/1/02 ROUTE SR 281  
 H.C. ROUSOS WEATHER SUNNY COUNTY WOOD  
 R.C. HOMAN TEMP. 95° TOWNSHIP MONTGOMERY  
 SECTION 19  
 T 4 N R 12 E

TYPE MONUMENT SM.R.R.SPIKE  
 ON SURFACE - ~~BELOW~~ ON  
~~LEFT~~ - CL PAV'T - RIGHT 4.2'  
- TO - EDGE PAVEMENT  
 S.L.M. 1011+28



Grid: Northing: \_\_\_\_\_ Easting: \_\_\_\_\_

SET MAG/WASHER  
 2/20/03, DCH



# O.D.O.T. DISTRICT 2 SURVEY OFFICE

PERSONNEL

REFERENCE NO. 42

SHEET      OF     

NOTES BARNHISEL

H.C. HOFFMAN

R.C. SOCKMAN

DATE 4-27-87

WEATHER SUNNY

TEMP. +55°

ROUTE 281

COUNTY WOOD

TOWNSHIP Montgomery

SECTION 19

T 4 N R 12 E

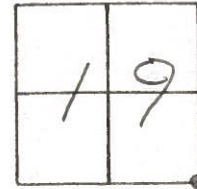
TYPE MONUMENT Lg RR Spk

ON SURFACE - BELOW 1 1/2"

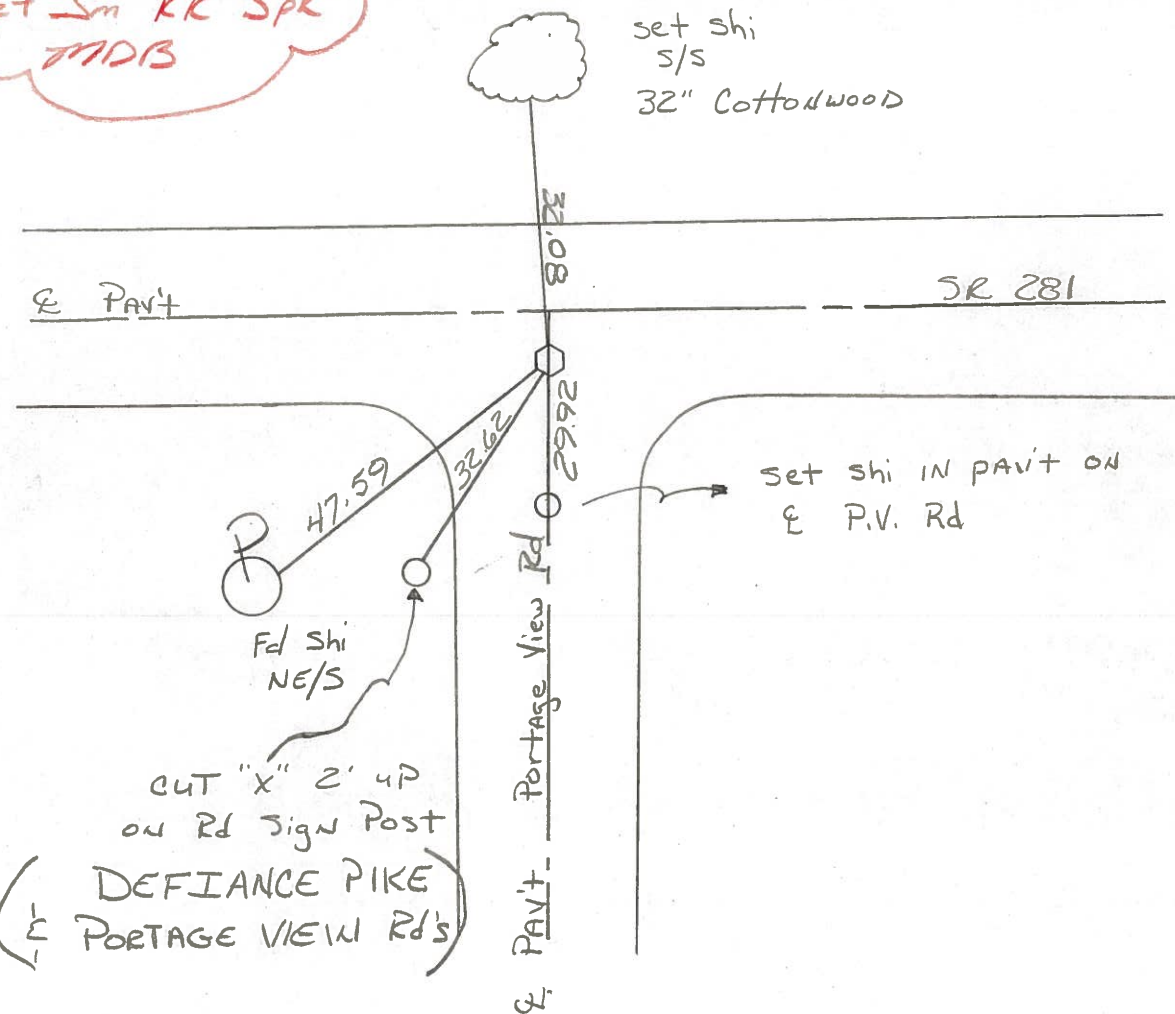
LEFT - & PAV'T. - RIGHT 4.2

- TO - EDGE PAVEMENT

S.L.M. 1011 + 28 ON & Portage View Rd



5-6-87  
Set Sm RR Spk  
MDS



HOFFMAN

LD-5-(25M-2-59)

19.51 TO 25.55 - 1984 RESURFACING

SHEET NO. 21

PERSONNEL TITLE PERSONNEL TITLE

COUNTY WOOD

DATE OK-8-11-69

S. R. #281

WEATHER

SEC. 29

TEMP

DESCRIPTION

LEFT

CENTER LINE

RIGHT

JOB NO.

N. 1/4 Post SEC. 29  
MONTGOMERY Twp.  
FD. I. PIN - SET R.R. Spk.

#43

SHINER IN P. POLE S.E. 55.90  
SHINER IN T. POLE N.W. 30.56  
NEAR EDGE SIGN Post S.S.E. 18.47  
NEAR EDGE SIGN Post N.N.E. 17.48  
12-12-83 correct +40°

#182

Fd 22' of surface

RTEP 9.5

LTCF 10.4

0.6 RT &

cut hole  
1.5' up

27.26

55.96

1038 + 05

DID NOT DIG

N.W. COR. SEC. 29  
MONTGOMERY Twp.  
STONE - R.R. Spk.

#42

FD

~~SHINER IN T. POLE N. 28.95~~  
~~SHINER IN P. POLE S.W. 47.58~~  
~~SHINER IN T. POLE S.S.E. 71.10~~

DID NOT TRY TO LOCATE  
DO NOT WANT TO DIG good part.  
PORTAGE VIEW ROAD

#181

PERSONNEL TITLE PERSONNEL TITLE

COUNTY Wood DATE OK-8-11-69

S. R. #281 WEATHER

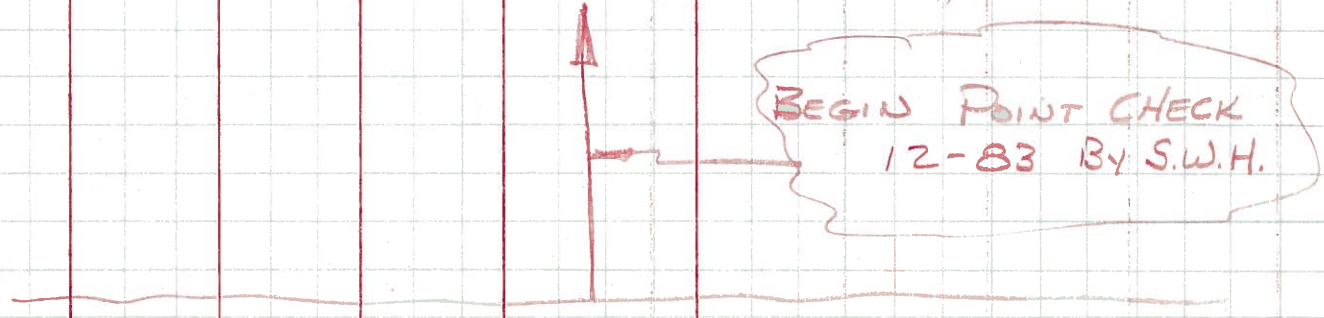
SEC. 29 TEMP.

DESCRIPTION LEFT CENTER LINE RIGHT JOB NO.

N. 1/4 Post SEC. 29 #43  
MONTGOMERY Twp.  
FD. I. PIN - SET R.R. Spk.

SHINER IN P. POLE S.E. 55.90'  
SHINER IN T. POLE N.W. 30.56'  
NEAR EDGE SIGN Post S.S.E. 18.47'  
NEAR EDGE SIGN Post N.N.E. 17.48'

#182 SEE NEW



BEGIN POINT CHECK  
12-83 BY S.W.H.

N.W. COR. SEC. 29 #42  
MONTGOMERY Twp.  
STONE - R.R. Spk.

SHINER IN T. POLE N. 28.95'  
SHINER IN P. POLE S.W. 47.58'  
SHINER IN T. POLE S.S.E. 71.10'

PORTAGE VIEW ROAD

#181

PERSONNEL	TITLE	PERSONNEL	TITLE	COUNTY	DATE
				Wood	OK 12-5-57
				#281	Sworben 3-29-60
					WEATHER 8-24-62
					Morrison 11-1-62
					TEMP Sworben 2-10-64

DESCRIPTION	LEFT	CENTER LINE	RIGHT	JOB NO.
-------------	------	-------------	-------	---------

N.W. cor. sec. 29 Montgomery Twp. Stone - R.R. spike set. Portage View Road.			Shiner in T.P. N. 28.95' 18.32' <del>Shiner in Br. P. S.E. 38.60'</del> Shiner in P.P. S.W. 47.58' 41.95' Shiner in T.P. S.S.E. 71.10'	
	(42)	#181		
N/4 post sec. 29 Montgomery Twp. Found iron pin - set small for corner. R.R. Spk.			Shiner in P.P. S.E. 55.90 Shiner in T.P. N.W. 30.53 30.85 <del>Shiner in 24" stump S. gone 40.27</del> <del>Shiner in 40" oak S. 40.28</del> " " old stump. S. 41.22'	
	(43)	#182		
Approximately .35 N.E. from Angle cor. sec. 20 T-4-N R-12-E. iron pipe set R.R. Spk.			N.E. cor. house and. N.W. 76.36 S.E. cor. house and. N.W. 72.22 <del>N.E. to shiner in butternut tree (gone) 28.65</del> S.W. To shiner in P. Pole 57.73 N.E. To shiner int. Pole 30.38 Shiner in 12" Maple N. 76.35'	
	(45)	#184		
1013.83 E. of N/4 post sec. 29 T-4-N R-12-E set R.R. spike Fd.			Shiner in conference post S.E. 28.78 Shiner in 2nd post S. of cor. Post S.W. 78.35 Shiner in 3rd post S. of cor. post S.E. 48.16 45.06	
	(44)	#183		
			Shiner in T.P. N.N.W. 46.77 46.71 Shiner in T.P. N.E. 65.70 65.75 Shiner in T.P. S.E. 39.94	