

O.D.O.T. DISTRICT 2 SURVEY OFFICE (USE ONLY)

PERSONNEL

REFERENCE NO. 42 A

SHEET 1 OF 49

NOTES BARNHISEL

DATE 7/14/87

ROUTE SR 281

H.C. LOEHRKE

WEATHER SUNNY

COUNTY WOOD

R.C. HOFFMAN

TEMP. 75°

TOWNSHIP MONTGOMERY

DWG BY NIESE PID --

SECTION 20

T 4 N R 12 E

TYPE MONUMENT SM R.R. SPIKE

ON SURFACE - ~~BELOW~~ ON

OFFSET C PAVEMENT 1.0' L : RT

-- TO -- EDGE PAVEMENT

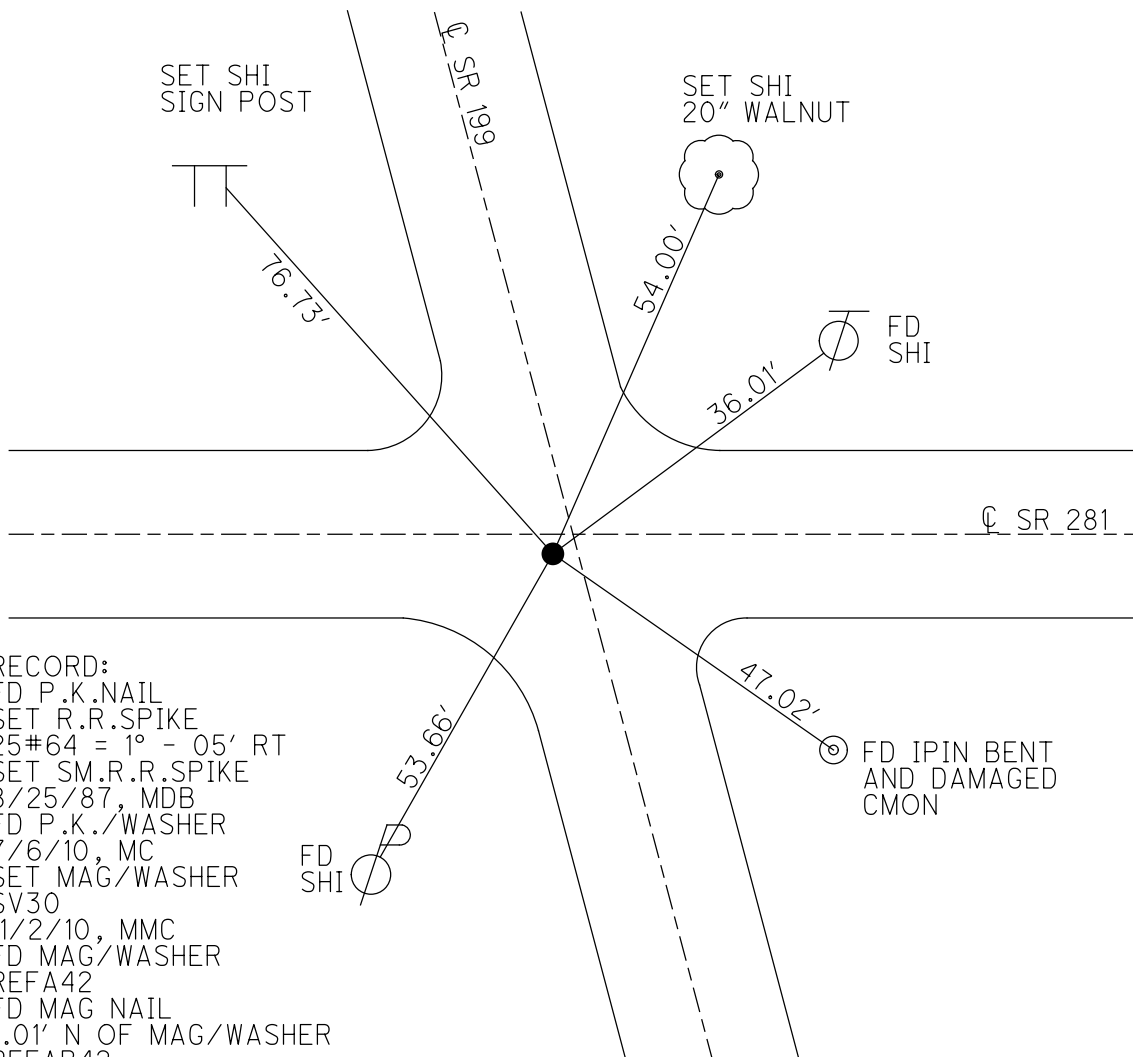
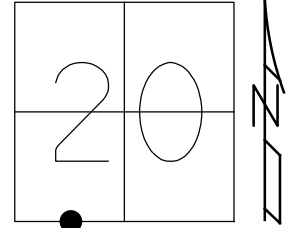
STATION: 1029+41

HORZ.DATUM: NAD83(2011)

GEOID: 2012A

GRID: NORTHING: 590308.039

EASTING: 1691280.344



RECORD:
 FD P.K.NAIL
 SET R.R.SPIKE
 25#64 = 1° - 05' RT
 SET SM.R.R.SPIKE
 8/25/87, MDB
 FD P.K./WASHER
 7/6/10, MC
 SET MAG/WASHER
 SV30
 11/2/10, MMC
 FD MAG/WASHER
 REFA42
 FD MAG NAIL
 1.01' N OF MAG/WASHER
 REFAB42
 11/15/16, JLL

O.D.O.T. DISTRICT 2 SURVEY OFFICE (USE ONLY)

PERSONNEL

REFERENCE NO. 42 A

SHEET 1 OF 49

NOTES BARNHISEL

DATE 7/14/87

ROUTE SR 281

H.C. LOEHRKE

WEATHER SUNNY

COUNTY WOOD

R.C. HOFFMAN

TEMP. 75°

TOWNSHIP MONTGOMERY

SECTION 20

T 4 N R 12 E

TYPE MONUMENT SM.R.R.SPIKE

ON SURFACE - ~~BELOW~~ ON

~~LEFT~~ - Q PAV'T - RIGHT 1.0'

- TO - EDGE PAVEMENT

S.L.M. 1029+41

Grid: Northing: 590308.164 Easting: 1691280.294

