

O.D.O.T. DISTRICT 2 SURVEY OFFICE (USE ONLY)

PERSONNEL

REFERENCE NO. 44

SHEET 3 OF 51

NOTES MILLER

DATE 6/14/23

ROUTE SR 281

H.C. AUBLE

WEATHER BREEZY

COUNTY WOOD

R.C. NIESE
BEJARANO

TEMP. 57°

TOWNSHIP MONTGOMERY

DWG BY RHOADES PID CHIP SEAL

SECTION 29

T 4 N R 12 E

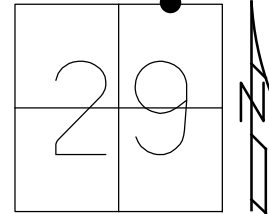
TYPE MONUMENT MAG/WASHER

ON SURFACE - ~~BELOW~~ ON

OFFSET \varnothing PAVEMENT ON LT : RT

- TO - EDGE PAVEMENT

STATION: 1048+18



HORZ.DATUM: NAD83 2011

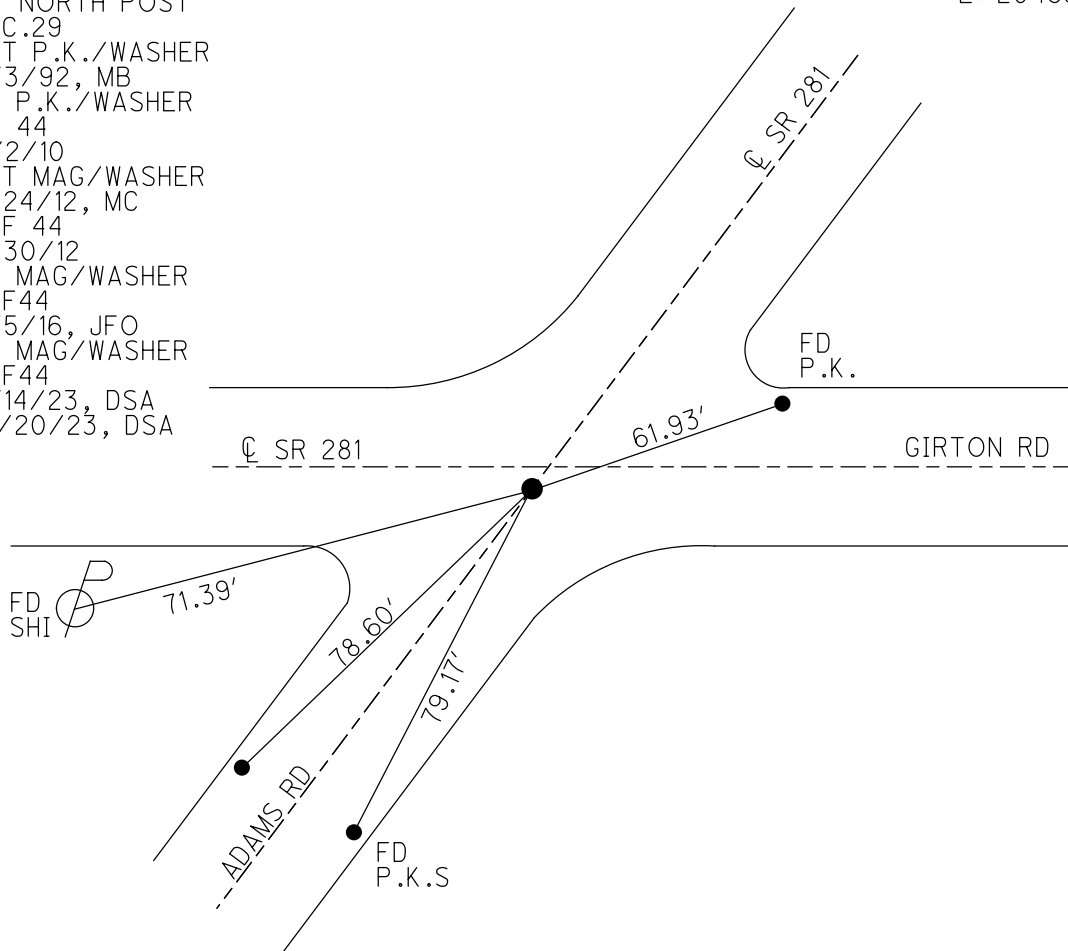
GEOID: NADV88 2018

GRID: NORTHING: 590290.974

EASTING: 1693085.885

RECORD:
1013.83' EAST
OF NORTH POST
SEC.29
SET P.K./WASHER
3/3/92, MB
FD P.K./WASHER
SV 44
11/2/10
SET MAG/WASHER
7/24/12, MC
REF 44
7/30/12
FD MAG/WASHER
REF44
8/5/16, JFO
FD MAG/WASHER
REF44
6/14/23, DSA
10/20/23, DSA

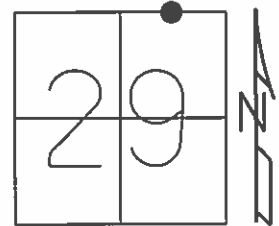
WOOD LPD:
N: 412669.990
E: 204686.736



O.D.O.T. DISTRICT 2 SURVEY OFFICE (USE ONLY)

PERSONNEL _____ REFERENCE NO. 44 SHEET 3 OF 49
 NOTES HUSS DATE 3/19/12 ROUTE SR 281
 H.C. CANTERBURY WEATHER CLEAR COUNTY WOOD
 R.C. HUSS TEMP. 65° TOWNSHIP MONTGOMERY
 _____ SECTION 29
 _____ T 4 N R 12 E

TYPE MONUMENT P.K./WASHER
~~ON SURFACE~~ - BELOW 0.15'
 LEFT - ☉ PAV'T - RIGHT ON, 3.2' S. OF ☉ W.
- TO - EDGE PAVEMENT
 S.L.M. 1048+18
 GRID: NORTHING: 590290.739 EASTING: 1693085.930



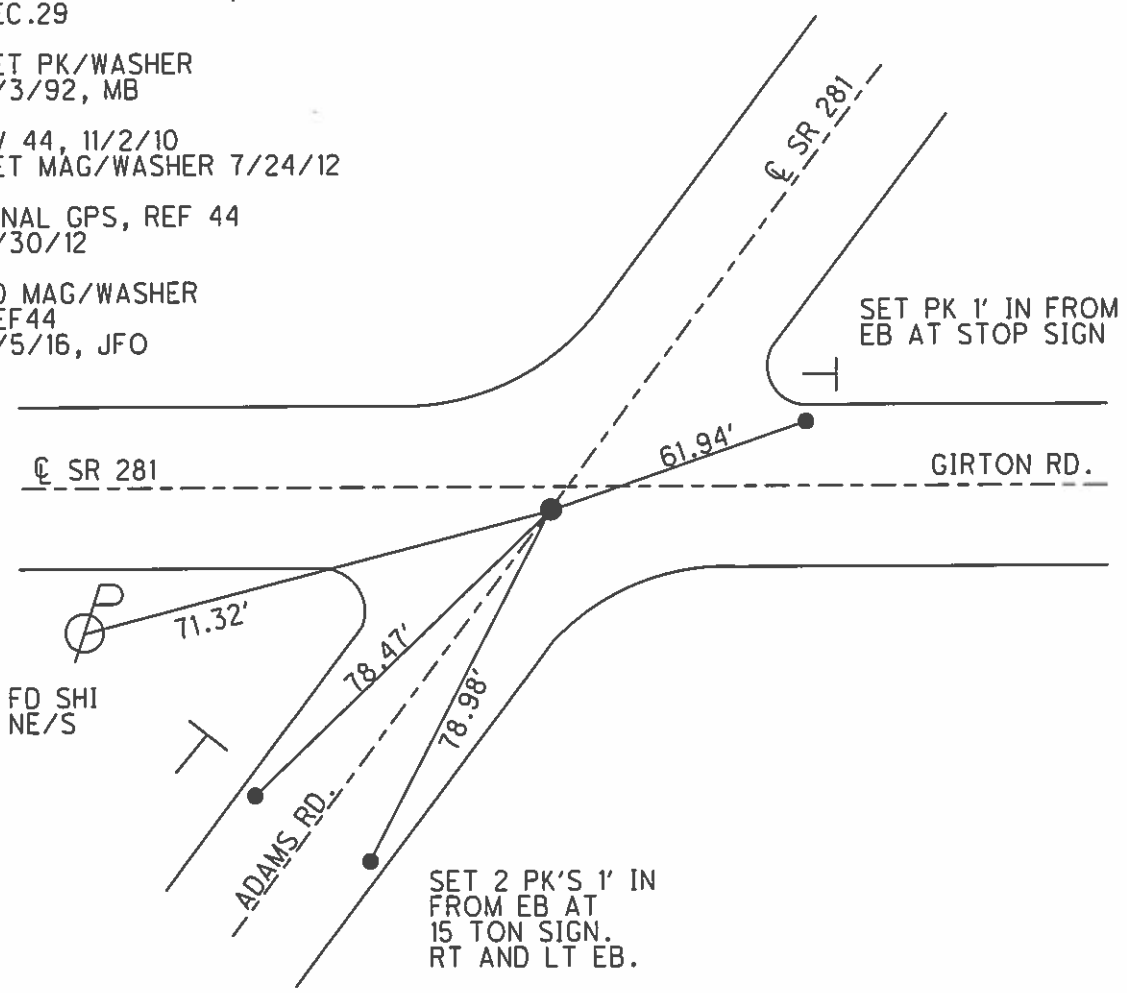
RECORD: 1013.83' EAST
 OF NORTH POST,
 SEC.29

SET PK/WASHER
 3/3/92, MB

SV 44, 11/2/10
 SET MAG/WASHER 7/24/12

FINAL GPS, REF 44
 7/30/12

FD MAG/WASHER
 REF44
 8/5/16, JFO



FD SHI
 NE/S

SET 2 PK'S 1' IN
 FROM EB AT
 15 TON SIGN.
 RT AND LT EB.

O.D.O.T. DISTRICT 2 SURVEY OFFICE

PERSONNEL

REFERENCE NO. 44

SHEET 2 OF

NOTES LOEHRKE

H.C. BAENHISEC

R.C. KUSZ

VAN DUSEN

DATE 7-18-91

WEATHER clear

TEMP. +80°

ROUTE 281

COUNTY WOOD

TOWNSHIP MONTGOMERY

SECTION 29

T4 N R12 E

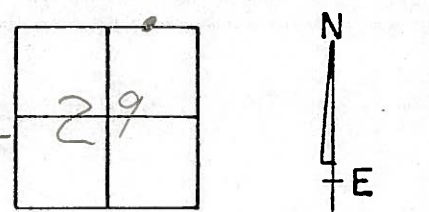
TYPE MONUMENT P.K. & Washer

ON SURFACE - BELOW yes

LEFT - & PAV'T. - RIGHT yes

- TO - EDGE PAVEMENT 3.2 S. OF E Pav't 281 West

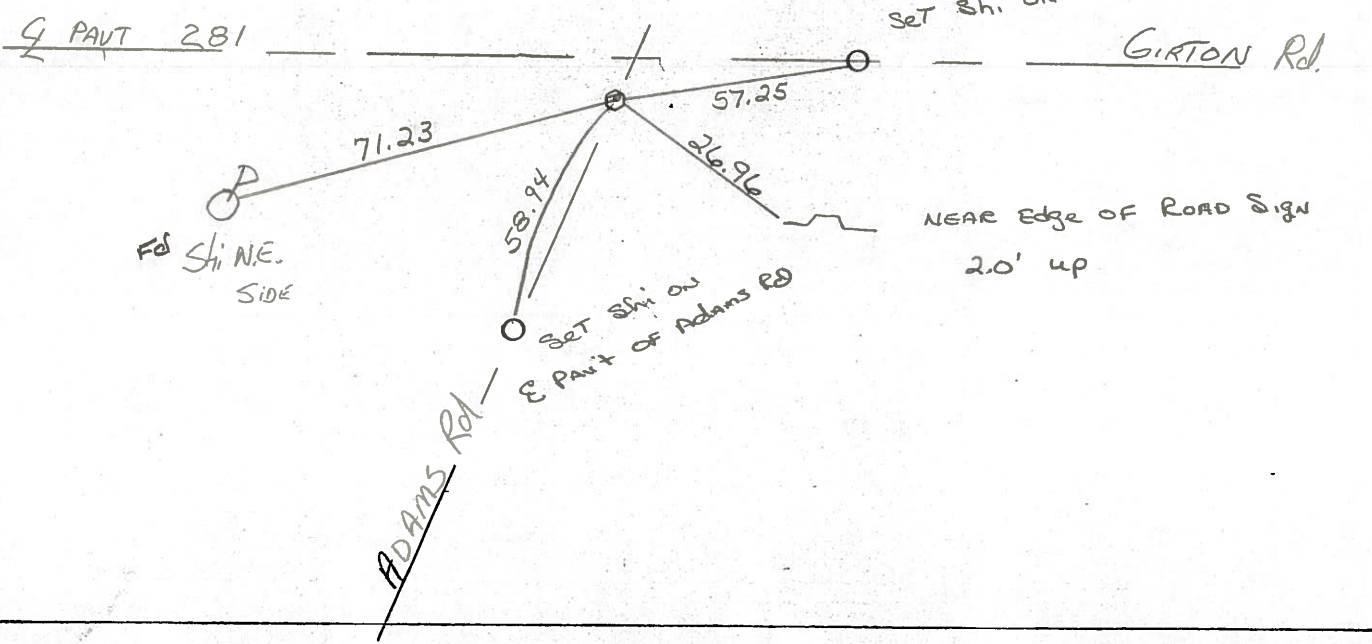
S.L.M. 1048+18



Set P.K. & Washer
 3-3-92
 mB

Record:
 10 13.83' EAST OF
 North 1/4 Post, sec, 29

S.R. 281



Q.D.O.T. DISTRICT 2 SURVEY OFFICE

SHEET _____ OF _____

County WOOD S.R. 281

Date 12-12-83

Township MONTGOMERY

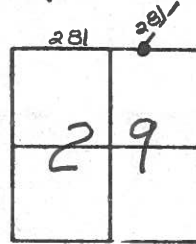
Weather OVERCAST

Section 29

Temp. +40°

T4N, R2E

Personnel HOFFMAN



#44

LOEHRKE
BARNHISEL

Fd. P.R. SPK @ SURFACE
ON & PAUT 281 N.E.
3.2' S. of & Paut 281 West.

S.L.M. 1048+17

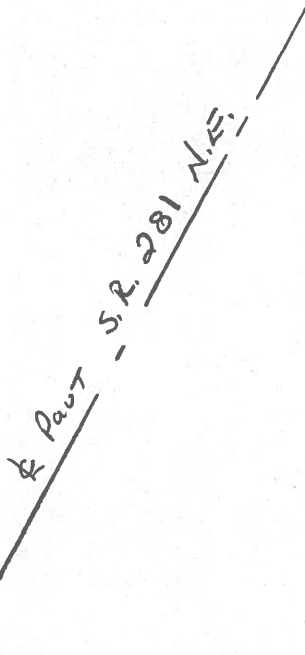
RECORD:
1013.83' E. of N 1/4
Post of Sec. 29

Set P.K./Washer

8-15-84

S.W.H.

& Paut S.R. 281 West



Set shi
N/S

CORNER
POST
Set shiner
N/S

Set shi
5' WESTERLY of
EASTERLY E.P.
of ADAMS ROAD

ADAMS Rd.

RE Copied
1-26-71

PERSONNEL	TITLE	PERSONNEL	TITLE	COUNTY	DATE	WEATHER	TEMP.
CK. BY SILVESTER				WOOD	OK-8-11-69		
				S. R. #281			
				SEC. 29 & 20			

DESCRIPTION	LEFT	CENTER LINE	RIGHT	JOB NO.
-------------	------	-------------	-------	---------

ZELENIAR Farm

N.E. COR. Ho. FON. N.W.	76.55
S.E. COR. Ho. FON. N.W.	72.22
SHINER IN P. POLE S.W.	57.73
SHINER IN POLE N.E.	30.28
SHINER IN 12' MAPLE N.	76.15

1066 + 48

Approx. .35' N.E. From
ANGLE COR. SEC. 20
T-4-N R-12-E
FD. I. PIPE - SET R.R. SPK.
LT top 7.7
RT top 12.5 #184

#45

SE/S set shi
12" maple
4104
set shi 5777
set shi 47.54

1013.83' E. OF N. 1/4
POST SEC. 29
T-4-N R-12-E
R.R. SPK. FD @ surface

#44

ONE 281 NE	
3.2 S 281 west	
183	

SHINER 2ND post S. OF COR Post S.W. 78.33
SHINER 3RD post S. OF COR. Post S.E. 48.16'
~~SHINER IN T. POLE N.W. 46.80~~
~~SHINER IN T. POLE N.E. 66.00~~
~~SHINER IN T. POLE S.E. 39.90'~~

even / stop sign
on k post 57.04

71.24
55.43

RE COPIED
1-26-71

PERSONNEL TITLE PERSONNEL TITLE COUNTY WOOD DATE OK-8-11-69
 CK. BY SILVESTER S. R. #281 WEATHER _____
 SEC. 29 & 20 TEMP. _____

DESCRIPTION LEFT CENTER LINE RIGHT JOB NO.

<p>Approx. .35' N.E. From ANGLE COR. SEC. 20 T-4-N R-12-E FD. I. PIPE - SET R.R. Spk.</p>	<p>#45</p>	<p>N.E. COR. Ho. FON. N.W. 76.35' S.E. COR. Ho. FON. N.W. 72.22' SHINER IN P. POLE S.W. 57.73' SHINER IN POLE N.E. 30.28' SHINER IN 12" MAPLE N. 76.15'</p>
<p>#184</p>		
<p>1013.83' E. OF N. 1/4 POST SEC. 29 T-4-N R-12-E R.R. Spk.</p>	<p>#44</p>	<p>SHINER 2ND post S. OF COR POST S.W. 78.33' SHINER 3RD post S. OF COR. POST S.E. 48.16' SHINER IN T. POLE N.N.W. 46.80' SHINER IN T. POLE N.E. 66.00' SHINER IN T. POLE S.E. 39.90'</p>
<p>#183</p>		

PERSONNEL	TITLE	PERSONNEL	TITLE	COUNTY	DATE
				Wood	OK 12-5-57
				#281	Sworben 3-29-60
					WEATHER 8-24-62
					Morrison 11-1-62
					TEMP Sworben 2-10-64

DESCRIPTION	LEFT	CENTER LINE	RIGHT	JOB NO.
-------------	------	-------------	-------	---------

N.W. cor. Sec. 29 Montgomery Twp. Stone - R.R. spike set. Bridge View Road.		OK ✓	Shiner in T.P. N. 28.95' 1832 Shiner in Br. P. S.E. 38.6 Shiner in P.P. S.W. 47.58' 41.9 Shiner in T.P. S.E. 71.16	
(42) #181				
N/4 post sec. 29 Montgomery Twp. Found iron pin - set small for corner.		R.R. Spk. OK ✓	Shiner in P.P. S.E. 55.9 Shiner in T.P. N.W. 30.53 ⁵⁶ 30.8 Shiner in 24" stump S. Gone 40.2 Shiner in 40" oak S. 40.2 " " Old stump. S. 41.22	
(43) #182				
Approximately .35 N.E. from Angle cor. sec. 20 T-4-N R-12-E. iron pipe. Fd. Set R.R. Spk.		OK ✓	N.E. cor. house And. N.W. 76.3 S.E. cor. house fdn. N.W. 78.2 N.E. to shiner in butternut tree (gone) 28.6 S. W. To shiner in P. Pole 57.7 N.E. To shiner into Pole 30.3 Shiner in 12" Maple N. 76.34	
(45) #184				
1013.83 E. of N/4 post sec. 29 T-4-N R-12-E Set R.R. spike Fd.		OK ✓	Shiner in conference post S.E. 28. Shiner in 2nd post S. of cor. " " Post S.W. 78.3 Shiner in 3rd post S. of cor. post S.E. 48.16 ^{18.6}	
(44) #183				
			Shiner in T.P. N.W. 46.77 ⁸⁰ 46. Shiner in T.P. N.E. 65.70 65. Shiner in T.P. S.E. 39.9	