

O.D.O.T. DISTRICT 2 SURVEY OFFICE (USE ONLY)

PERSONNEL

REFERENCE NO. 45 A

SHEET 5 OF 51

NOTES MILLER

DATE 6/14/23

ROUTE SR 281

H.C. AUBLE

WEATHER BREEZY

COUNTY WOOD

R.C. NIESE

TEMP. 57°

TOWNSHIP MONTGOMERY

BEJARANO

SECTION 21

DWG BY RHOADES PID CHIP SEAL

T 4 N R 12 E

TYPE MONUMENT MAG SHANK

ON SURFACE - ~~BELOW~~ ON

OFFSET ☉ PAVEMENT 1.2' ~~±~~ : RT

8.2' TO RT EDGE PAVEMENT

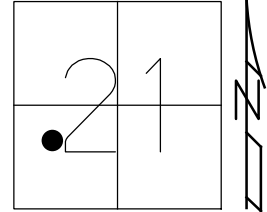
STATION: 1079+00

HORZ. DATUM: NAD83 2011

GEOID: NAVD88 2018

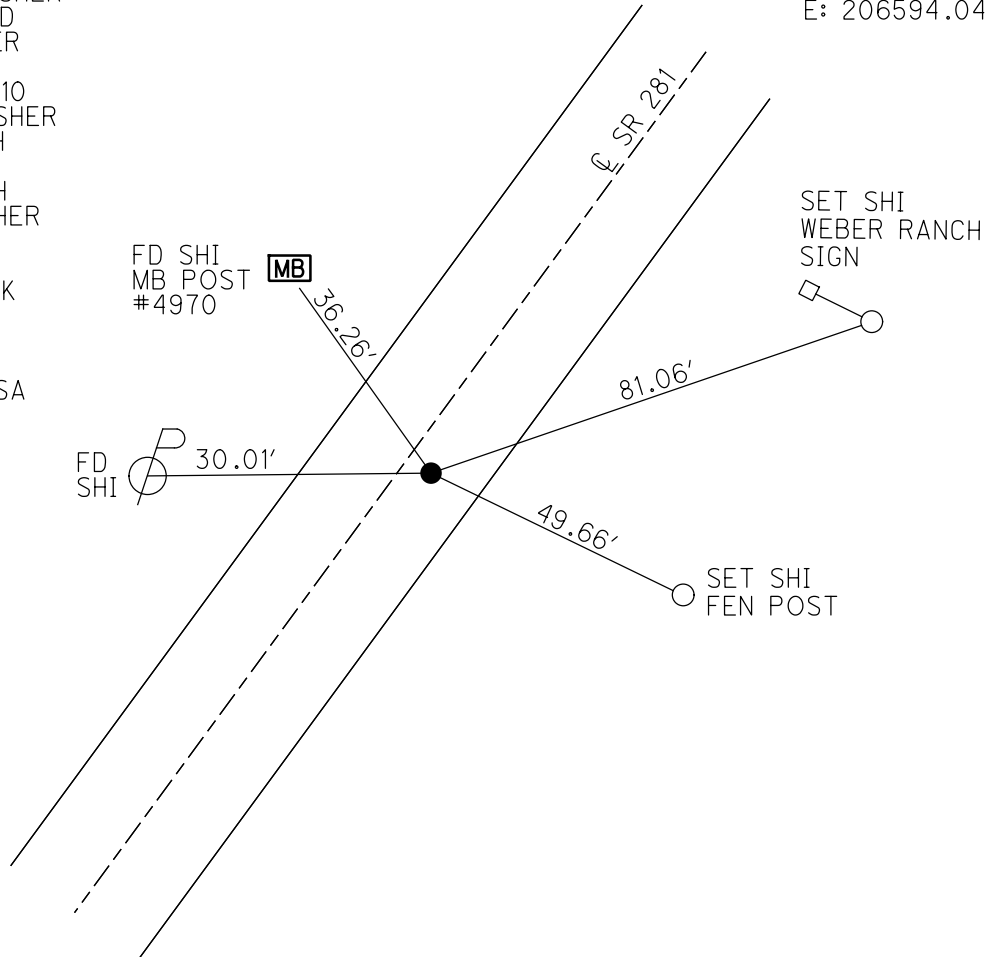
GRID: NORTHING: 592678.776

EASTING: 1695024.713



RECORD:
 SET P.K./WASHER
 4/26/92, BVD
 FD PK/WASHER
 7/6/10
 SVA45, 11/2/10
 SET MAG/WASHER
 7/24/12, SAH
 REFA45
 7/30/12, SAH
 FD MAG/WASHER
 REFA45
 8/5/16, JFO
 FD MAG SHANK
 REF45A
 3-3-23, DSA
 6/14/23
 10/20/23, DSA

WOOD LPD:
 N: 415083.359
 E: 206594.047



O.D.O.T. DISTRICT 2 SURVEY OFFICE (USE ONLY)

PERSONNEL _____

REFERENCE NO. 45 A

SHEET 5 OF 52

NOTES AUBLE

DATE 3/3/23

ROUTE SR 281

H.C. MILLER

WEATHER CLEAR

COUNTY WOOD

R.C. NIESE

TEMP. 36°

TOWNSHIP MONTGOMERY

SECTION 21

DWG BY MILLER PID R/W, NO PID

T 4 N R 12 E

TYPE MONUMENT MAG SHANK

ON SURFACE - ~~BELOW~~ ON

OFFSET 0 PAVEMENT 1.2' ~~RT~~ : RT

8.2' TO RT EDGE PAVEMENT

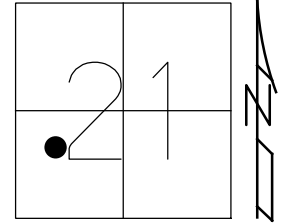
STATION: 1079+00

HORZ. DATUM: NAD83(2011)

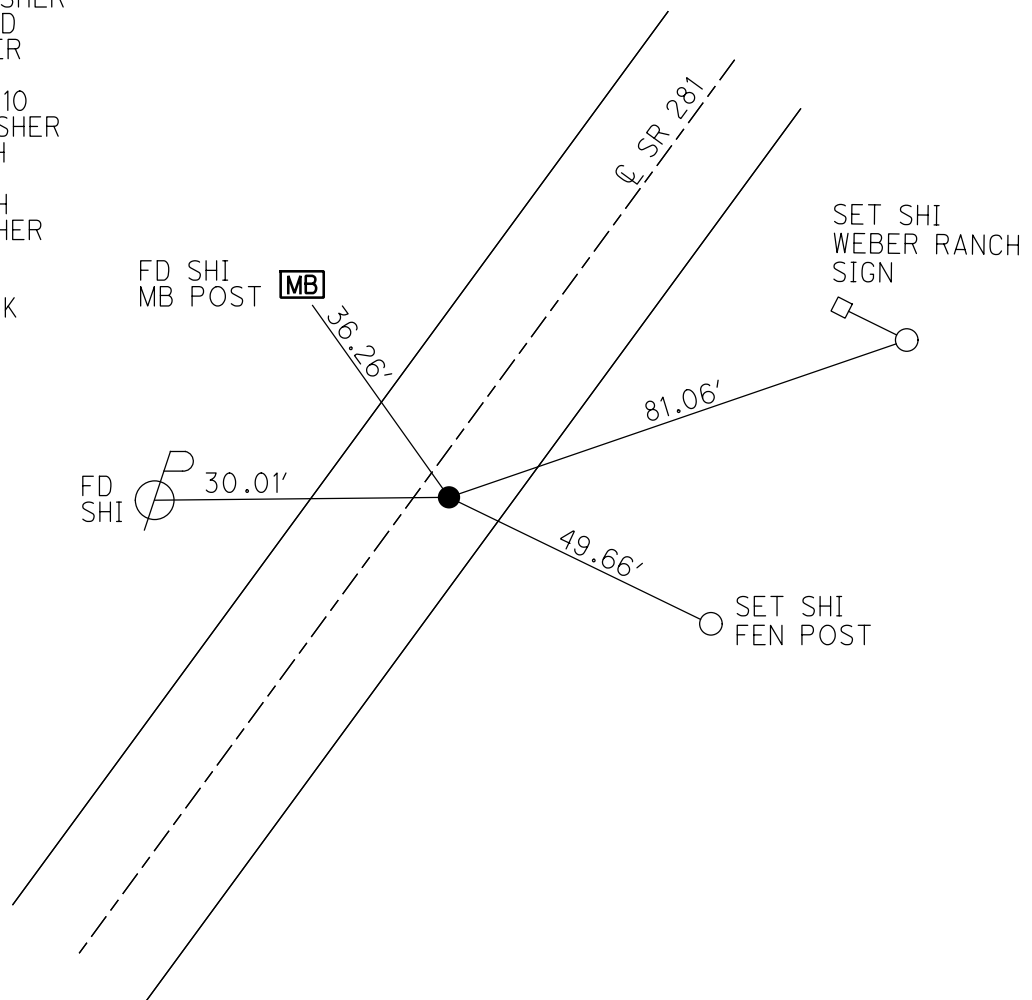
GEOID: NAVD88 2018

GRID: NORTHING: 592678.750

EASTING: 1695024.748



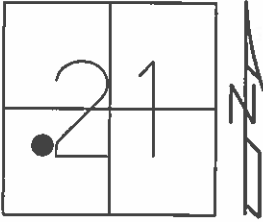
RECORD:
 SET P.K./WASHER
 4/26/92, BVD
 FD PK/WASHER
 7/6/10
 SVA45, 11/2/10
 SET MAG/WASHER
 7/24/12, SAH
 REFA45
 7/30/12, SAH
 FD MAG/WASHER
 REFA45
 8/5/16, JFO
 FD MAG SHANK
 REF 45A
 3-3-23, DSA



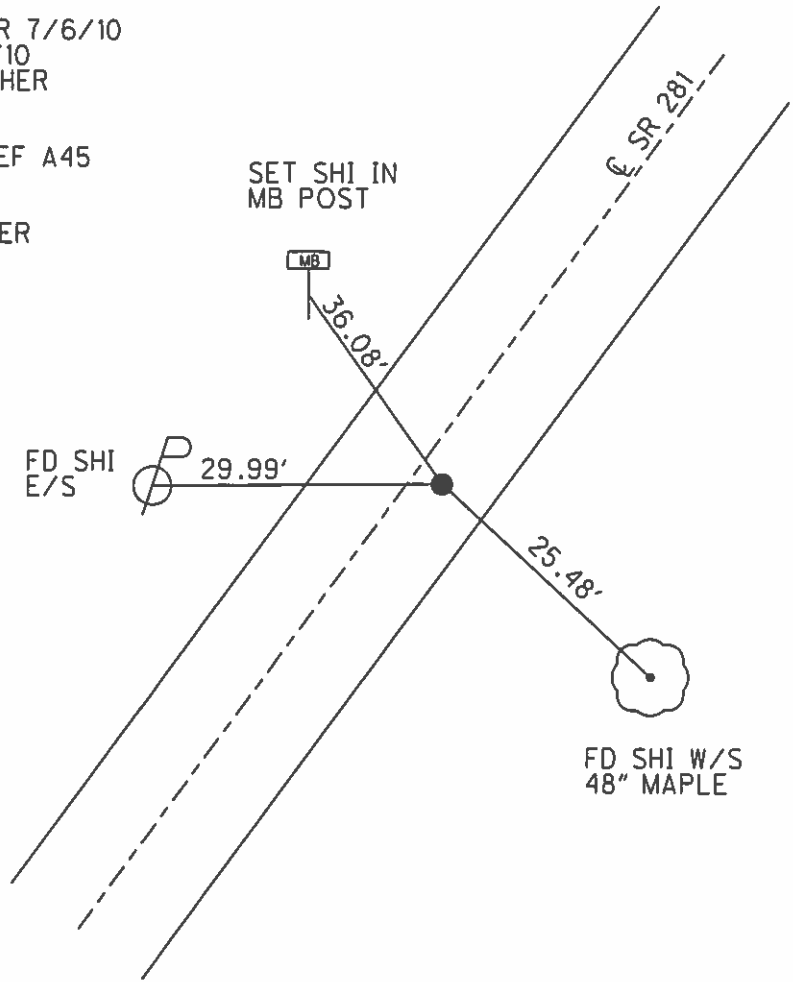
O.D.O.T. DISTRICT 2 SURVEY OFFICE (USE ONLY)

PERSONNEL _____ REFERENCE NO. 45 A SHEET 5 OF 49
 NOTES HUSS DATE 3/19/12 ROUTE SR 281
 H.C. CANTERBURY WEATHER CLEAR COUNTY WOOD
 R.C. HUSS TEMP. 70° TOWNSHIP MONTGOMERY
 _____ SECTION 21
 _____ T 4 N R 12 E

TYPE MONUMENT P.K./WASHER
 ON SURFACE - ~~BELOW~~ ON
~~LEFT~~ - C PAV'T - RIGHT 1.2'
8.2' TO RT EDGE PAVEMENT
 S.L.M. 1079+00
 GRID: NORTHING: 592678.740 EASTING: 1695024.796



SET PK/WASHER
 4/26/92, BVD
 FD PK/WASHER 7/6/10
 SV A45, 11/2/10
 SET MAG/WASHER
 7/24/12, SAH
 FINAL GPS, REF A45
 7/30/12, SAH
 FD MAG/WASHER
 REFA45
 8/5/16, JFO



O.D.O.T. DISTRICT 2 SURVEY OFFICE

PERSONNEL

REFERENCE NO. 45 a,b,c

SHEET OF

NOTES BARNHISEL

H.C. CUETIS

DATE 4-26-92

ROUTE 281

R.C. VAN DUSEN

WEATHER cloudy

COUNTY Wood

ROMETO

TEMP. +53°

TOWNSHIP MONTGOMERY

FISHER

SECTION 21

T 4 N R 12 E

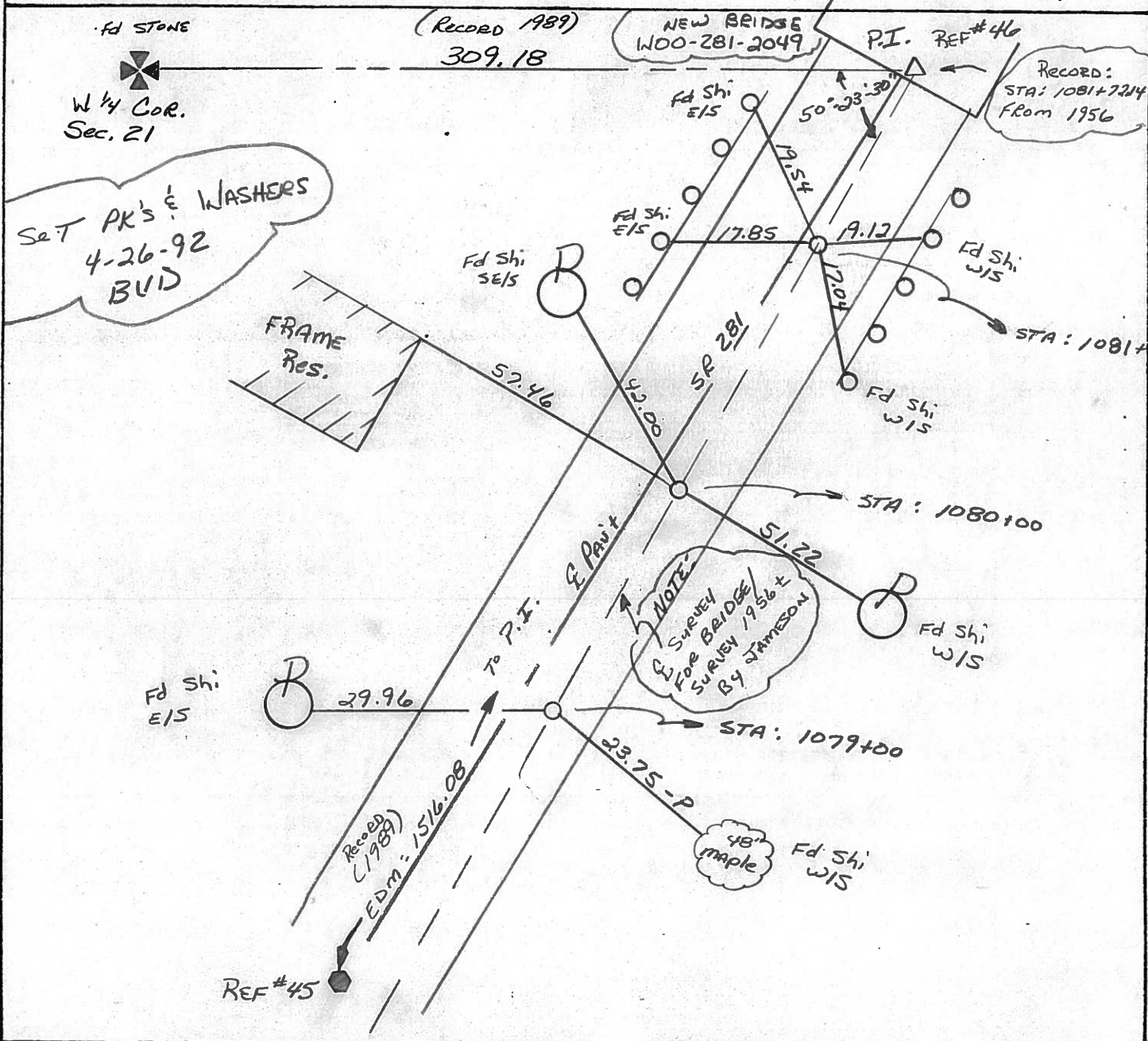
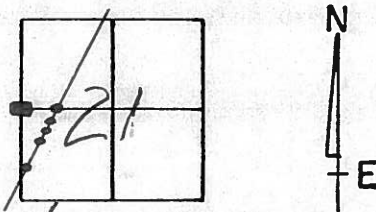
TYPE MONUMENT NAILS & SHINERS

ON SURFACE - BELOW 4"

- PAV'T. - RIGHT 1.5 ±

 TO EDGE PAVEMENT

S.L.M.



O.D.O.T. DISTRICT 2 SURVEY OFFICE

PERSONNEL

REFERENCE NO. 45-a,b,c

SHEET 1 OF 2

NOTES HOFFMAN

H.C. LOSHKUS

DATE MAY 11, 1989

ROUTE SR 281

R.C. BARANISZ

WEATHER CLEAR

COUNTY Woods

TEMP. 52°

TOWNSHIP MONTGOMERY

SECTION 21

T 4 N R 12 E

TYPE MONUMENT Nail-shiner

ON SURFACE - BELOW 4"

LEFT - C PAV'T. - RIGHT 1.5' ±

TO EDGE PAVEMENT

S.L.M. _____

