

O.D.O.T. DISTRICT 2 SURVEY OFFICE (USE ONLY)

PERSONNEL _____

REFERENCE NO. 45 C

SHEET 7 OF 52

NOTES HUSS

DATE 3/19/12

ROUTE SR 281

H.C. CANTERBURY

WEATHER CLEAR

COUNTY WOOD

R.C. HUSS

TEMP. 70°

TOWNSHIP MONTGOMERY

SECTION 21

DWG BY RHOADES

PID _____

T 4 N R 12 E

TYPE MONUMENT P.K./WASHER

ON SURFACE - ~~BELOW~~ ON _____

OFFSET \odot PAVEMENT 0.9' ~~RT~~ : RT

8.9' TO RT EDGE PAVEMENT

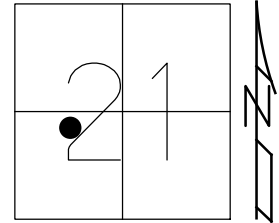
STATION: 1081+00, 2.65' N. OF S. BR. DECK

HORZ.DATUM: NAD83(2011)

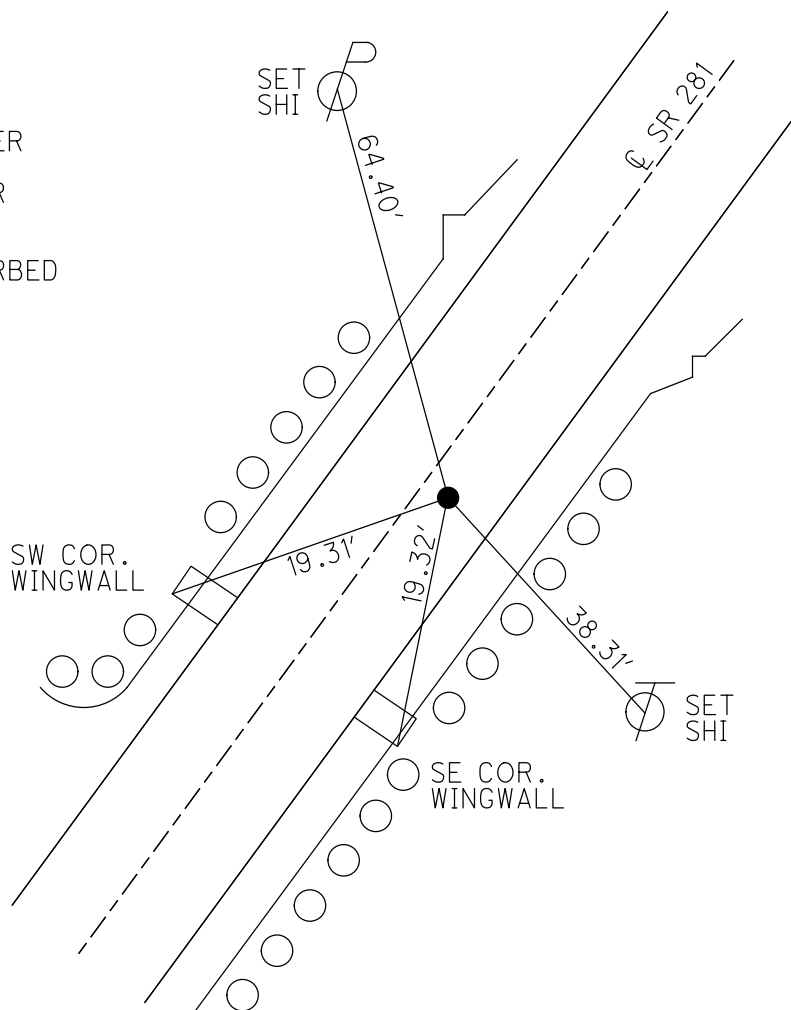
GEOID: 2012A

GRID: NORTHING: 592890.132

EASTING: 1695196.014



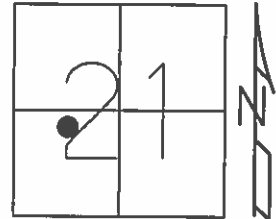
RECORD:
 STA 1081+72.14
 1956
 NEW BRIDGE
 WOO-281-2049
 1989
 SET P.K./WASHER
 4/26/92, BVD
 FD P.K./WASHER
 7/6/10
 SVC45, 11/2/10
 POINT UNDISTURBED
 ON DECK
 REF C45
 7/30/12, SAH



O.D.O.T. DISTRICT 2 SURVEY OFFICE (USE ONLY)

PERSONNEL	REFERENCE NO.	45 C	SHEET	7	OF	49
NOTES	HUSS	DATE	3/19/12	ROUTE	SR 281	
H.C.	CANTERBURY	WEATHER	CLEAR	COUNTY	WOOD	
R.C.	HUSS	TEMP.	70°	TOWNSHIP	MONTGOMERY	
				SECTION	21	
				T	4	N
				R	12	E

TYPE MONUMENT P.K./WASHER
 ON SURFACE - ~~BELOW~~ ON
~~LEFT~~ - C PAV'T - RIGHT 0.9'
8.9' TO RT EDGE PAVEMENT
 S.L.M. 1081+00, 2.65' N. OF S. BR.DECK
 GRID: NORTHING: 592890.132 EASTING: 1695196.014



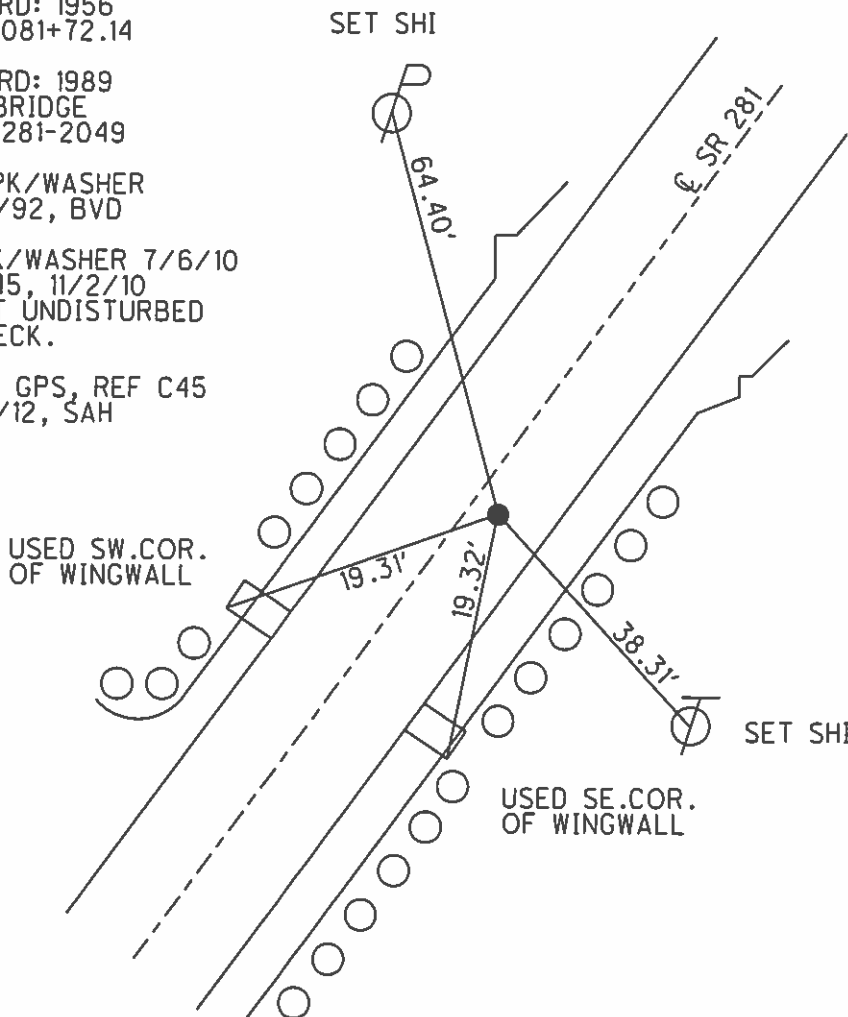
RECORD: 1956
 STA 1081+72.14

RECORD: 1989
 NEW BRIDGE
 WOO-281-2049

SET PK/WASHER
 4/26/92, BVD

FD PK/WASHER 7/6/10
 SV C45, 11/2/10
 POINT UNDISTURBED
 ON DECK.

FINAL GPS, REF C45
 7/30/12, SAH



O.D.O.T. DISTRICT 2 SURVEY OFFICE

PERSONNEL

REFERENCE NO. 45 a,b,c

SHEET OF

NOTES BARNHISEL

H.C. CUETIS

DATE 4-26-92

ROUTE 281

R.C. VAN DUSEN

WEATHER cloudy

COUNTY Wood

ROMETO

TEMP. +53°

TOWNSHIP MONTGOMERY

FISHER

SECTION 21

T 4 N R 12 E

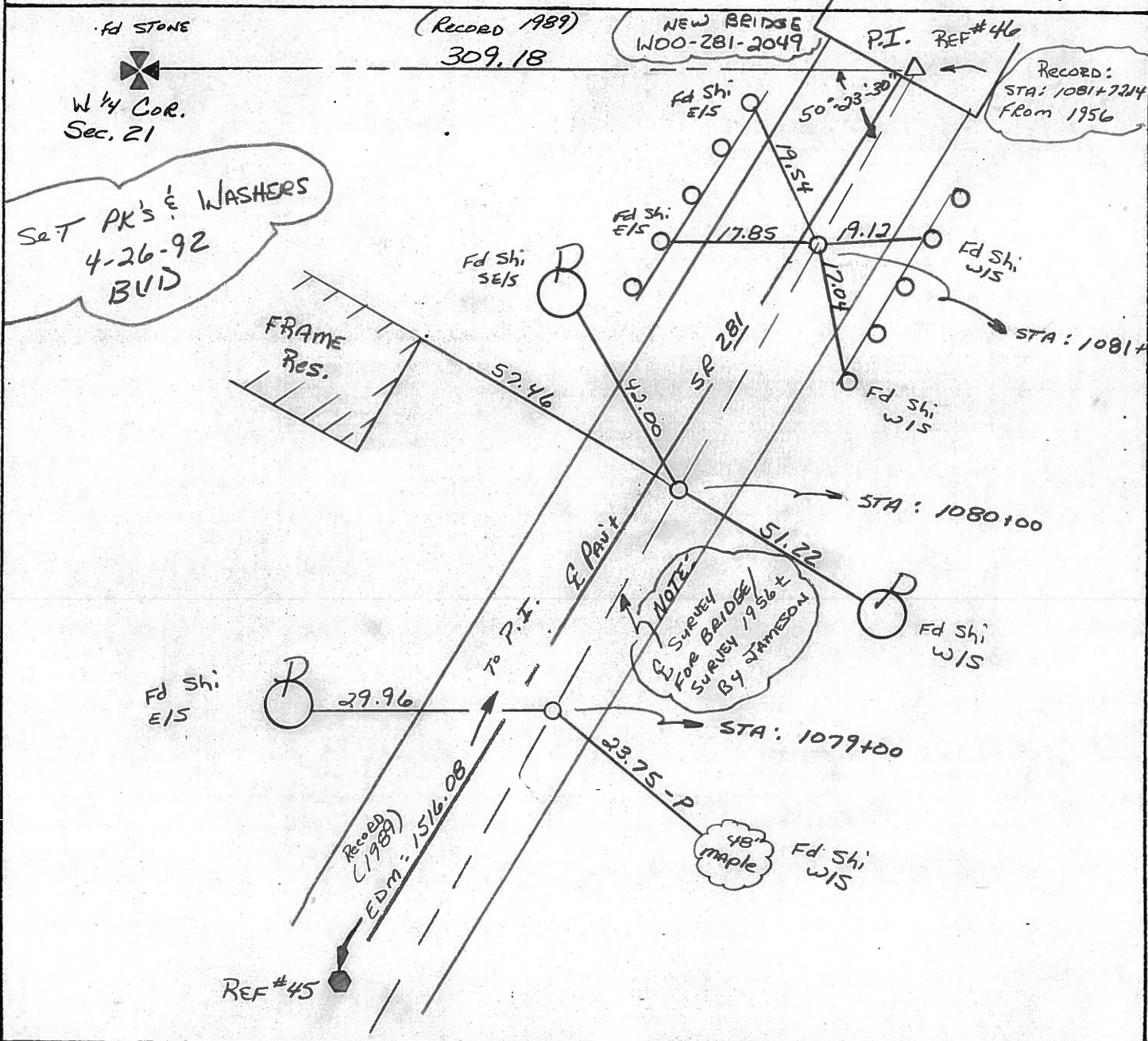
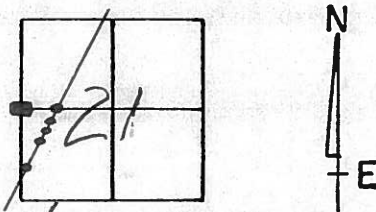
TYPE MONUMENT NAILS & SHINERS

ON SURFACE - BELOW 4"

- PAV'T. - RIGHT 1.5 ±

 TO EDGE PAVEMENT

S.L.M.



O.D.O.T. DISTRICT 2 SURVEY OFFICE

PERSONNEL

REFERENCE NO. 45-a,b,c

SHEET 1 OF 2

NOTES HOFFMAN

H.C. LOSHRKE

R.C. BARANISSEL

DATE MAY 11, 1989

WEATHER CLEAR

TEMP. 52°

ROUTE SR 281

COUNTY Woods

TOWNSHIP MONTGOMERY

SECTION 21

T 4 N R 12 E

TYPE MONUMENT Nail-shiner

ON SURFACE - BELOW 4"

LEFT - C PAV'T. - RIGHT 1.5' ±

TO EDGE PAVEMENT

S.L.M. _____

