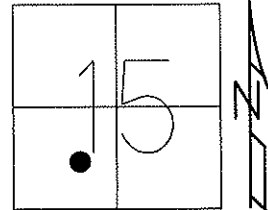


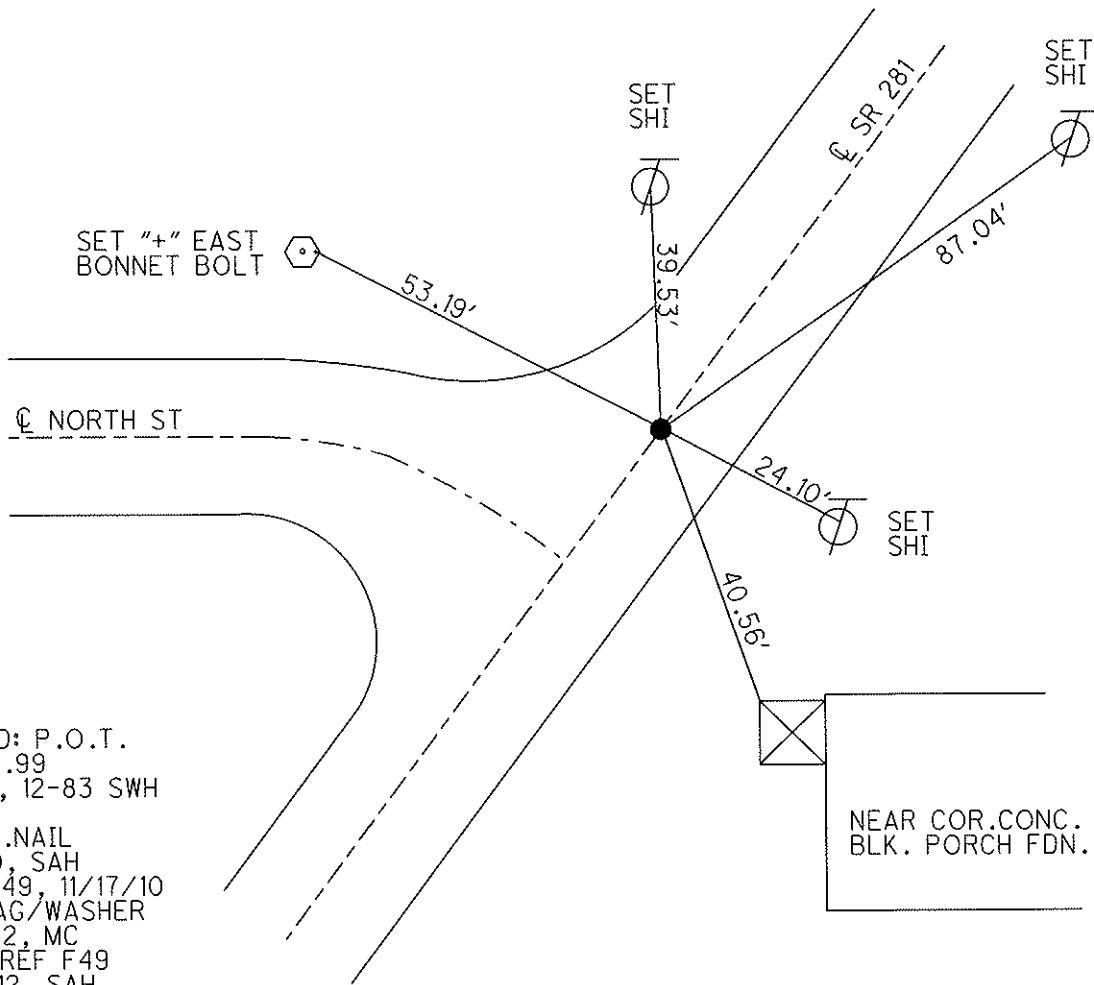
O.D.O.T. DISTRICT 2 SURVEY OFFICE (USE ONLY)

PERSONNEL _____ REFERENCE NO. 49 F SHEET 20 OF 49
 NOTES HUSS DATE 3/21/12 ROUTE SR 281
 H.C. CANTERBURY WEATHER CLEAR COUNTY WOOD
 R.C. HUSS TEMP. 76° TOWNSHIP MONTGOMERY
 _____ SECTION 15
 _____ T. 4 N R. 12 E

TYPE MONUMENT P.K.NAIL
 ON SURFACE - BELOW ON
 LEFT - Q PAV'T - ~~RIGHT~~ 0.3'
 _____ TO _____ EDGE PAVEMENT
 S.L.M. 1166+16.59



Grid: Northing: 597201.005 Easting: 1701907.065



RECORD: P.O.T.
 1166+16.99
 D.N.F., 12-83 SWH
 FD P.K.NAIL
 8/9/10, SAH
 GPS, F49, 11/17/10
 SET MAG/WASHER
 7/24/12, MC
 FINAL REF F49
 7/30/12, SAH

PERSONNEL TITLE PERSONNEL TITLE

BURNSIDE
SMITH
HOFFMAN

COUNTY WOOD

DATE 4-17-70

S. R. #281

WEATHER CLEAR

SEC.

TEMP. +65°

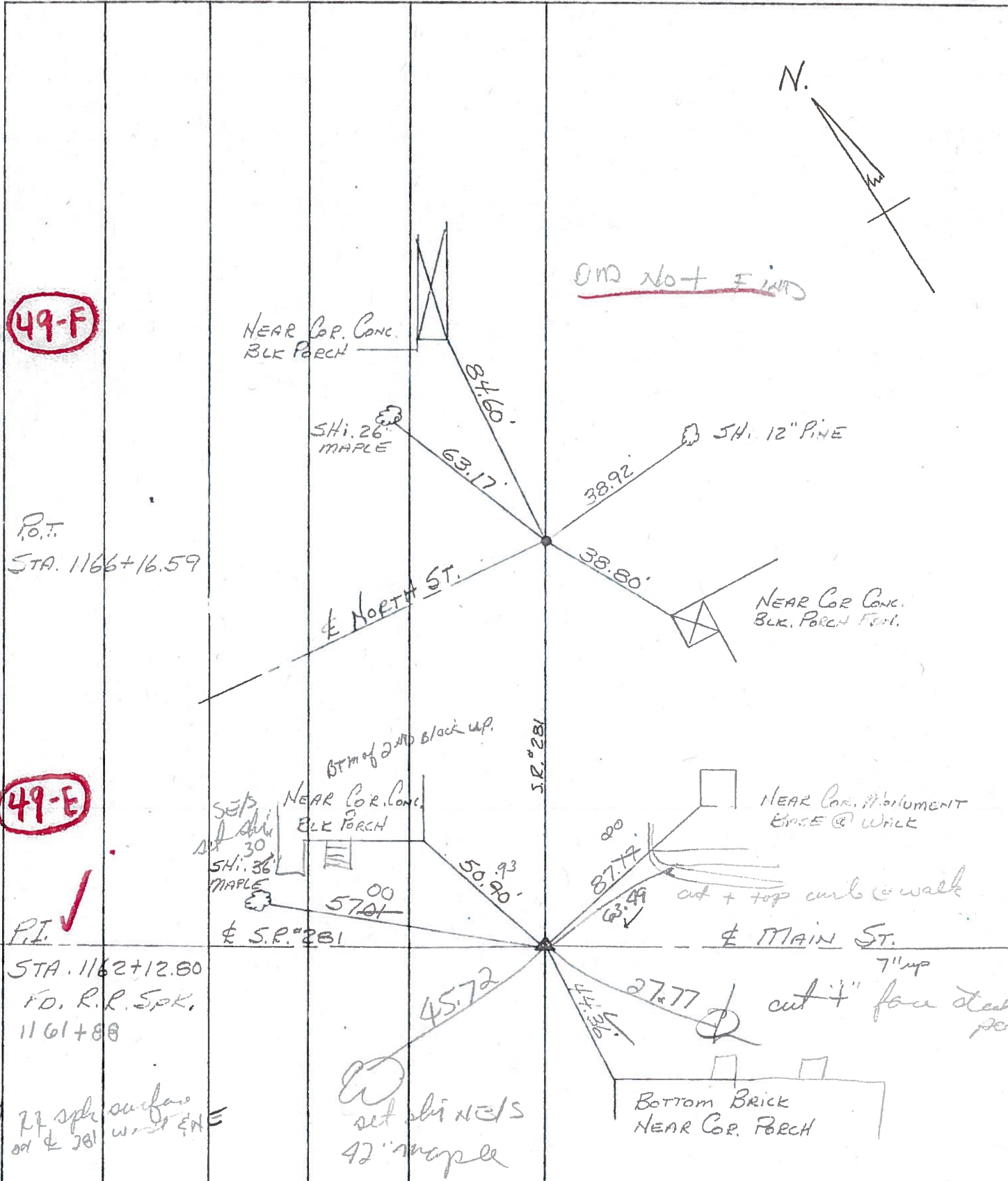
DESCRIPTION CONTROL TIES

JOB NO.

LEFT

CENTER LINE

RIGHT



49-F

49-E

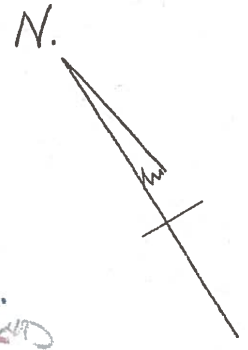
P.O.T.
STA. 1166+16.59

P.I. ✓
STA. 1162+12.80
FD. R.R. SPK.
1161+88

Fd 77 sph surface
on E 281 west side

set 42" maple
set 42" maple

OND NOT FOUND



NEAR COR. ABUTMENT
EDGE @ WALK

cut + top curb @ walk
7" up
cut 4" face steel

BOTTOM BRICK
NEAR COR. PORCH

PERSONNEL	TITLE	PERSONNEL	TITLE	COUNTY	DATE
BURNSIDE				WOOD	4-17-70
SMITH				S. R. #281	WEATHER CLEAR
HOFFMAN				SEC.	TEMP. +65°

